

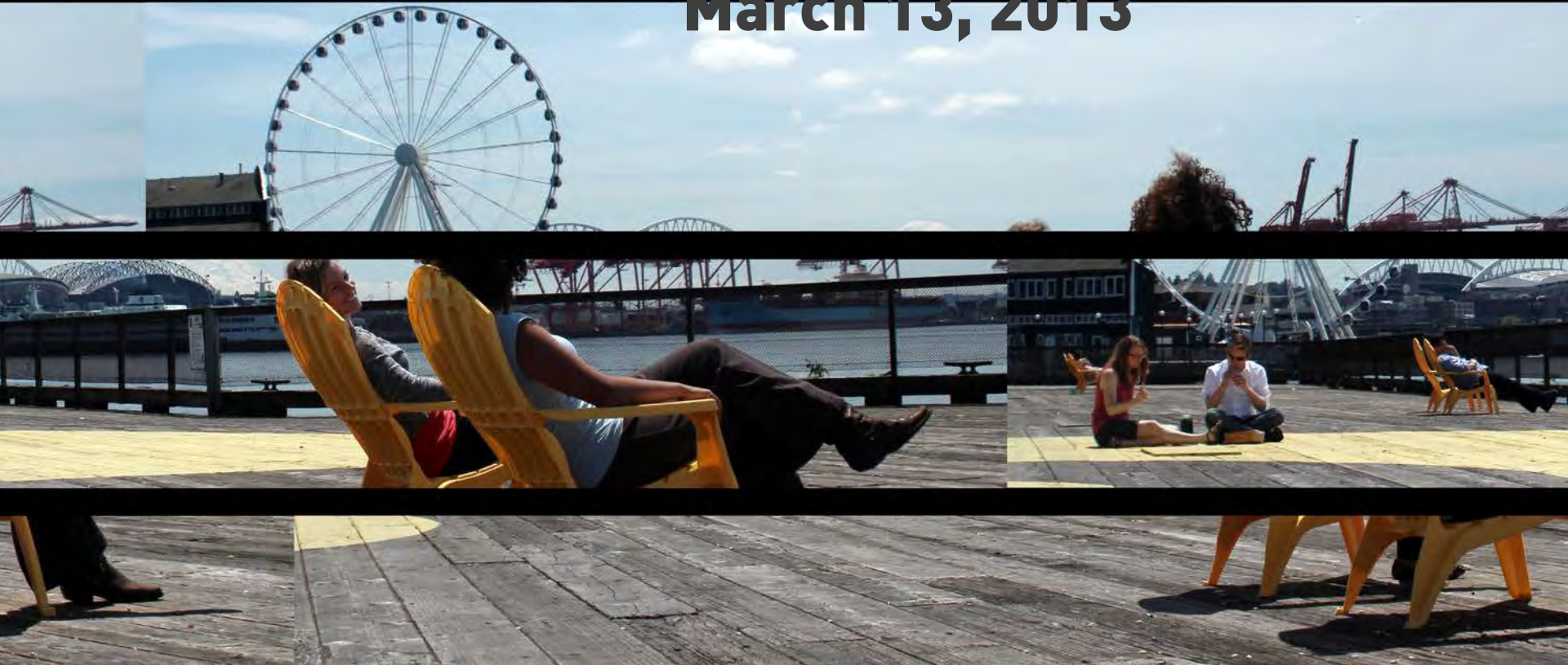
Waterfront
Seattle

Elliott Bay



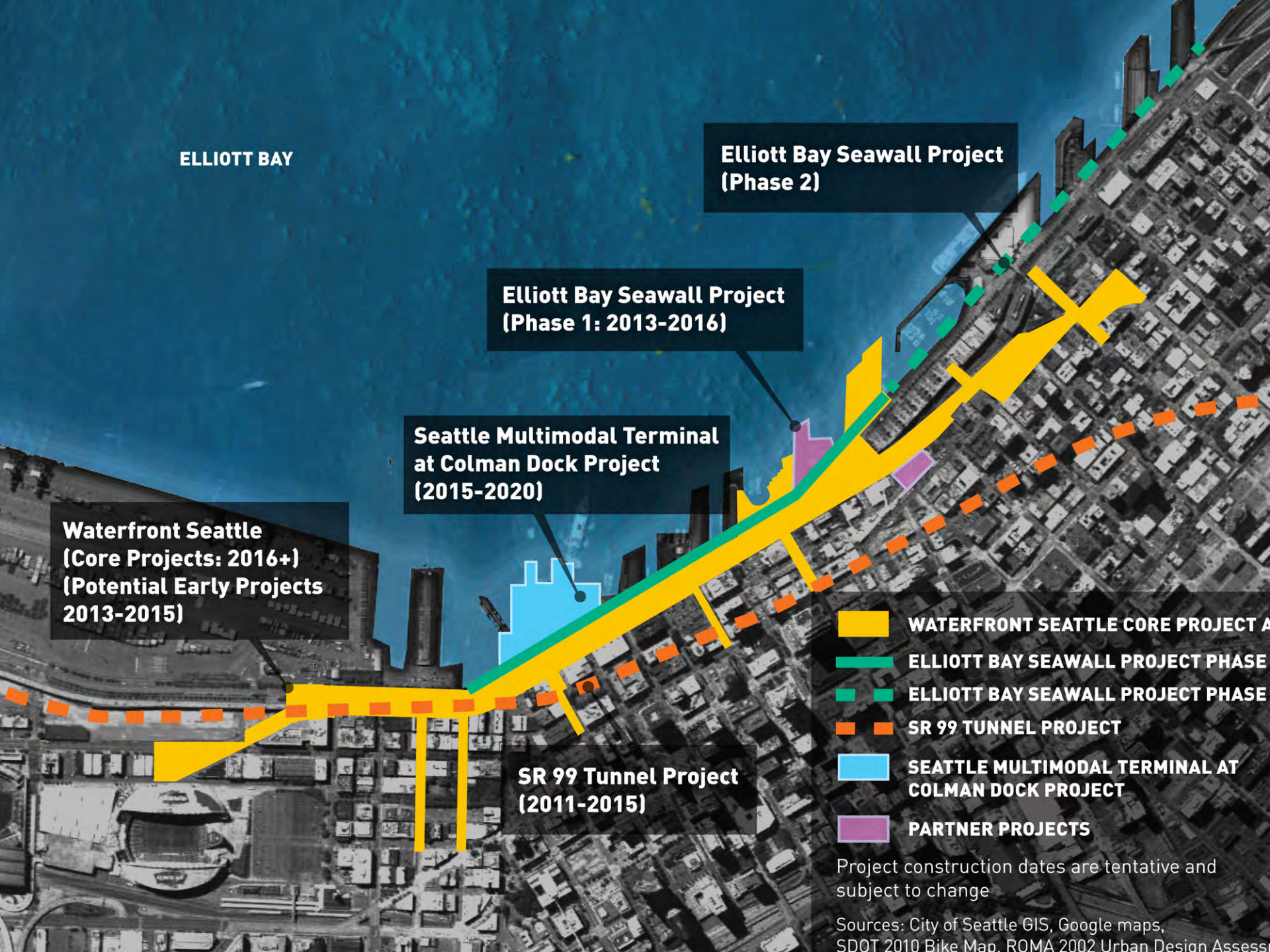
Seawall
Project

Urban Forestry Commission March 13, 2013









ELLIOTT BAY

Elliott Bay Seawall Project
(Phase 2)

Elliott Bay Seawall Project
(Phase 1: 2013-2016)

Seattle Multimodal Terminal
at Colman Dock Project
(2015-2020)

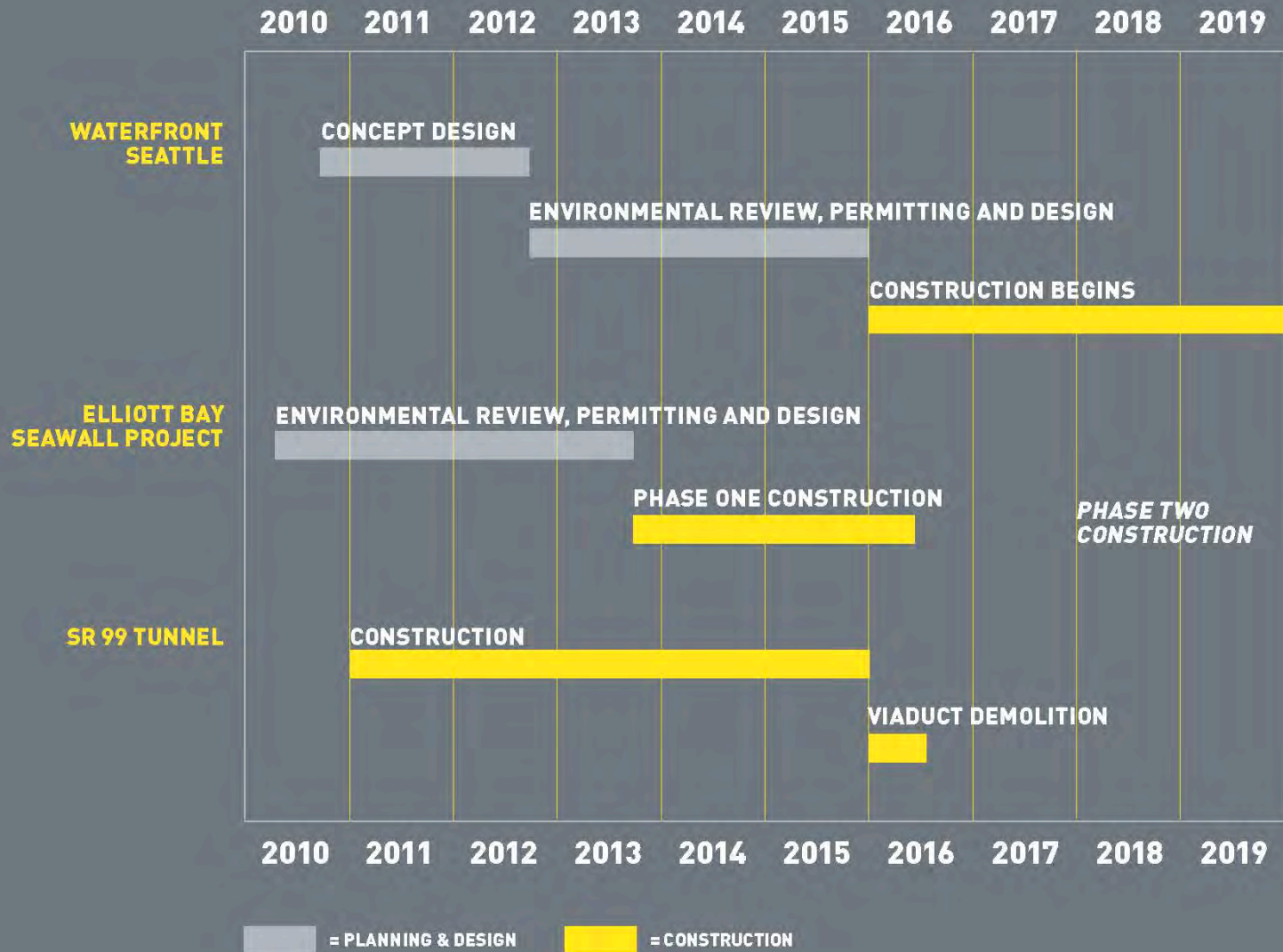
Waterfront Seattle
(Core Projects: 2016+)
(Potential Early Projects
2013-2015)

SR 99 Tunnel Project
(2011-2015)

- WATERFRONT SEATTLE CORE PROJECT A
- ELLIOTT BAY SEAWALL PROJECT PHASE
- ELLIOTT BAY SEAWALL PROJECT PHASE
- SR 99 TUNNEL PROJECT
- SEATTLE MULTIMODAL TERMINAL AT COLMAN DOCK PROJECT
- PARTNER PROJECTS

Project construction dates are tentative and
subject to change

Sources: City of Seattle GIS, Google maps,
SDOT 2010 Bike Map, ROMA 2002 Urban Design Assess



Seawall Project Area

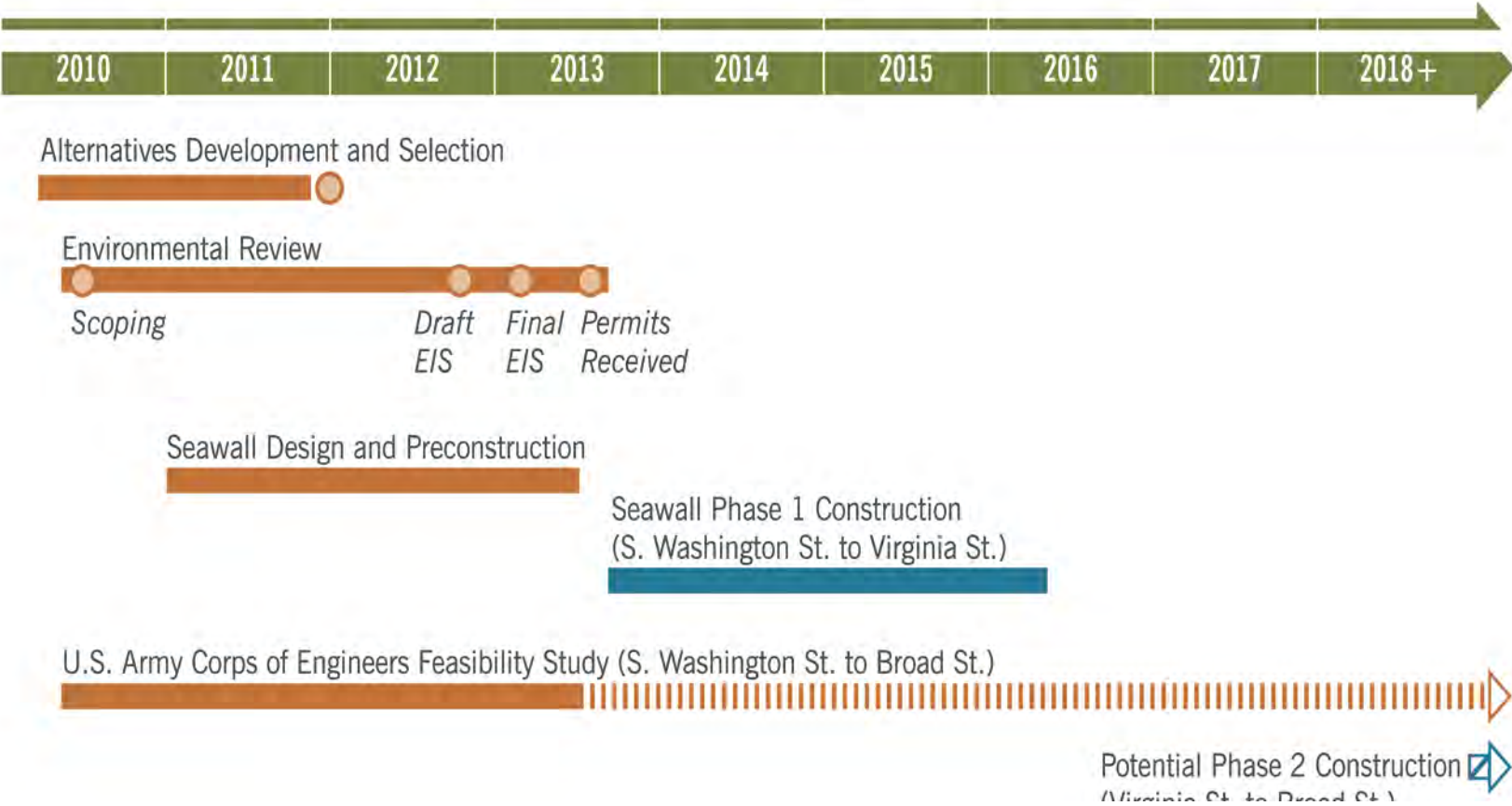


Project Purpose

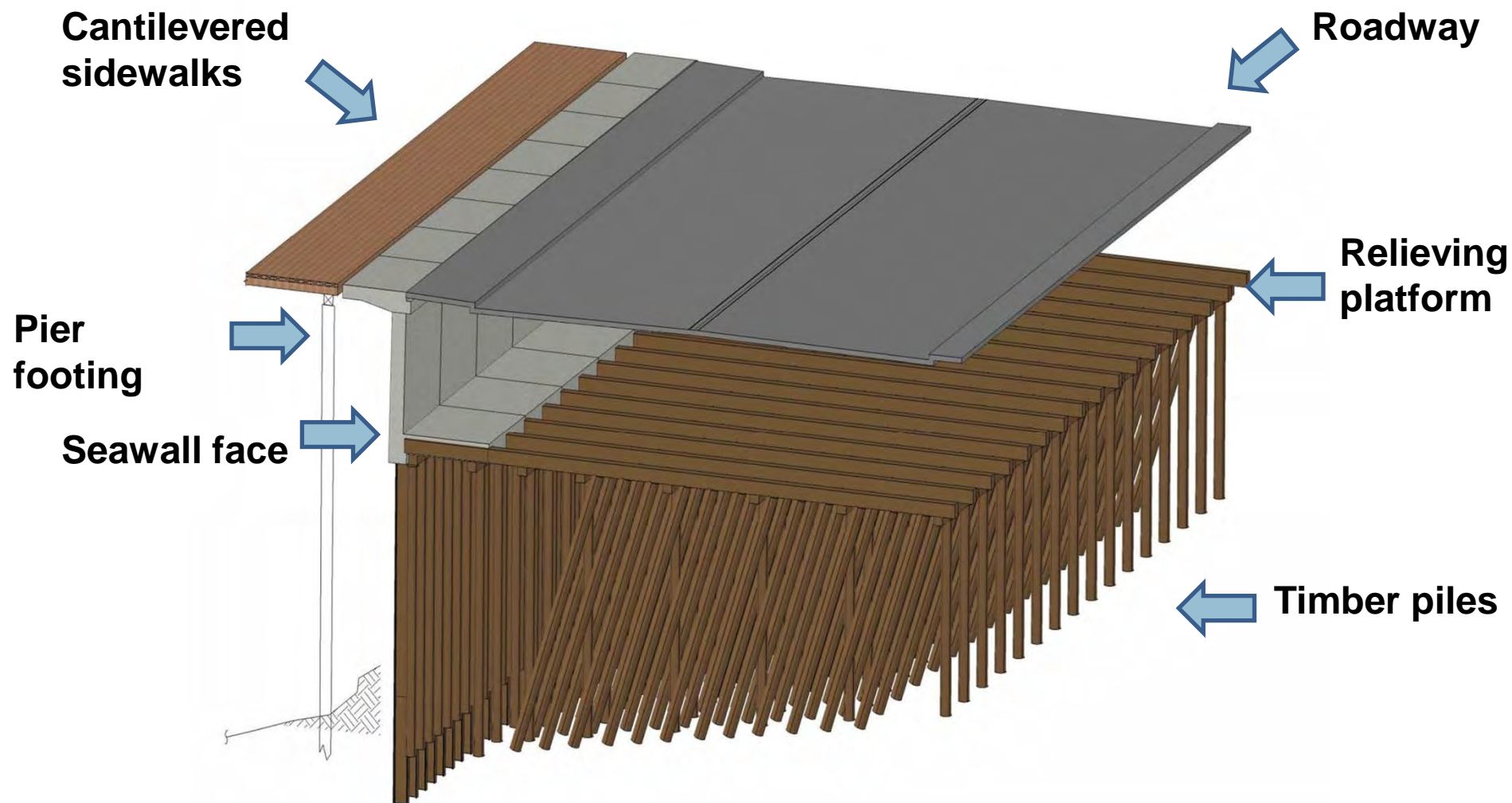
- **Reduce risk of damage from:**
 - Coastal storms
 - Seismic activity
- **Protect**
 - public safety
 - critical infrastructure
 - economic activities
- **Improve the degraded ecosystem**



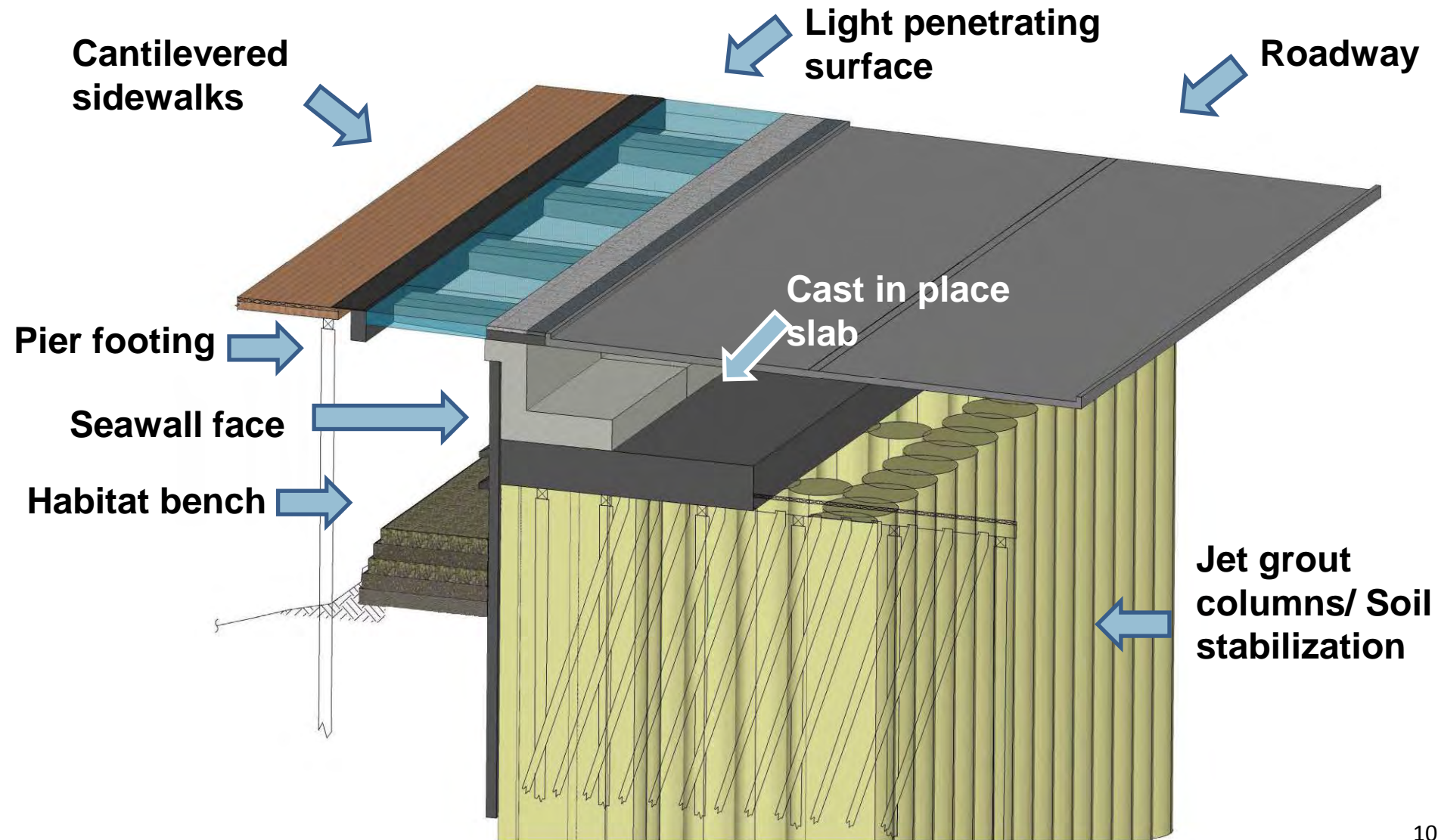
Project Schedule



Design Update: Existing Conditions



Design – Restored Condition



Urban Forestry Elements

- Landscaping plans are being developed in conjunction with final project design
- Vegetation proposed as part of the Elliott Bay Seawall Project would primarily be to benefit habitat
 - Street trees will be part of an overall urban design for the waterfront implemented separately the Waterfront Seattle Project



Urban Forestry Elements (continued)

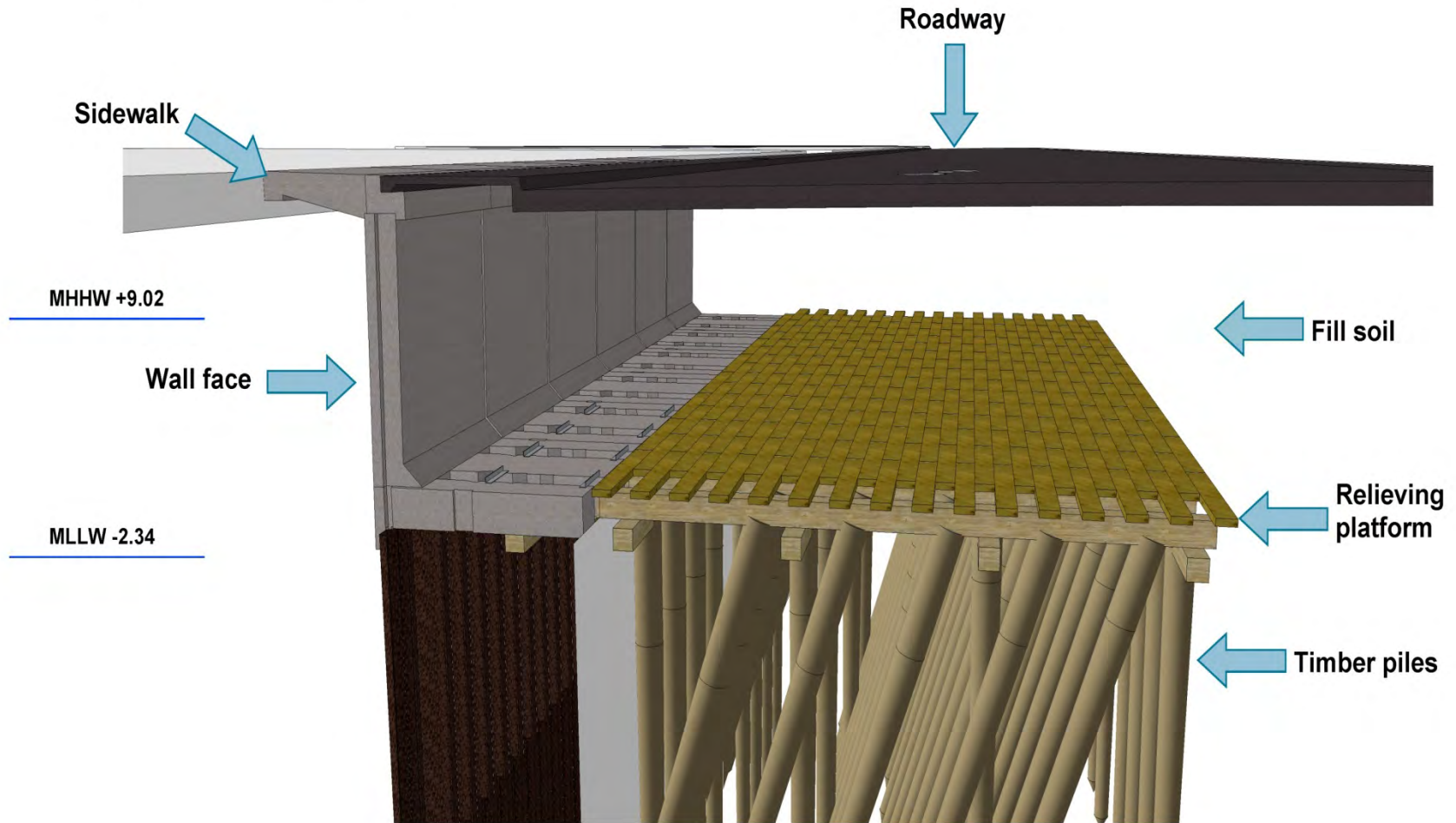
Central and North Seawall Construction

- Trees will be removed on the east and west sides of Alaskan Way to accommodate the restored roadway, bike path, and curb alignments.

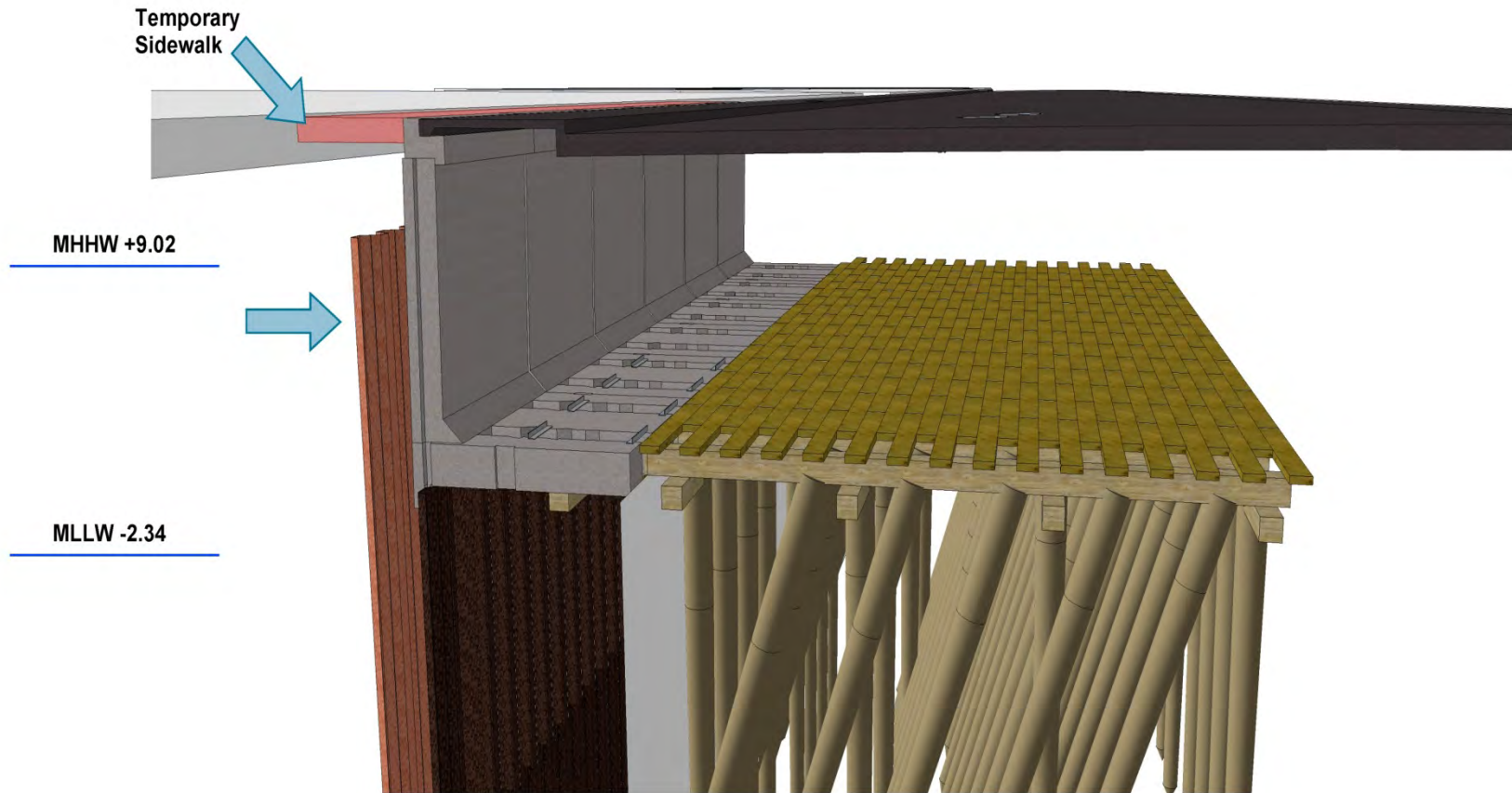
Most of these plants are ornamental and provide little natural-type habitat or support few native species.



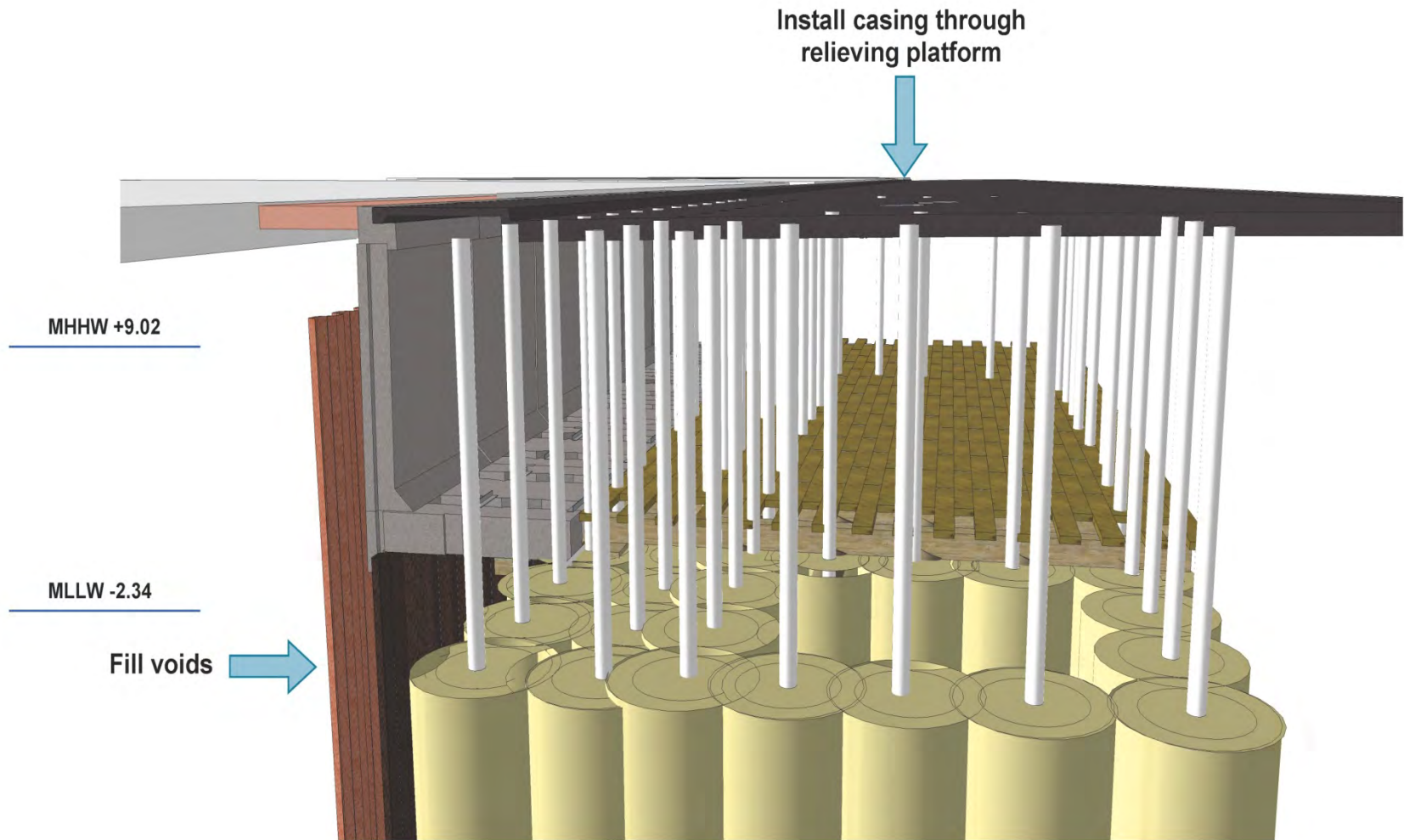
Existing Conditions



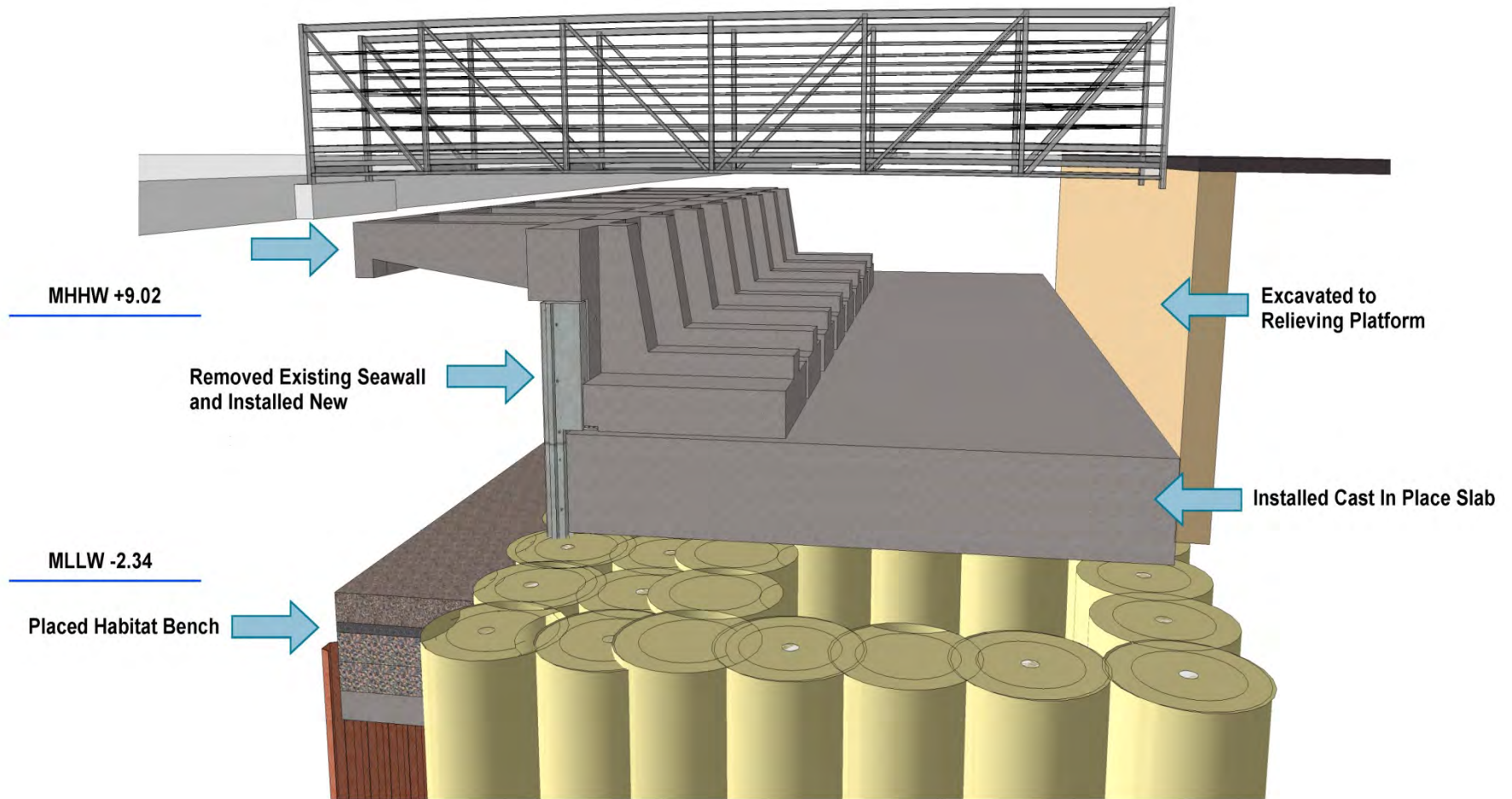
Remove Sidewalk, Install Temporary Sidewalk and Install Containment Wall



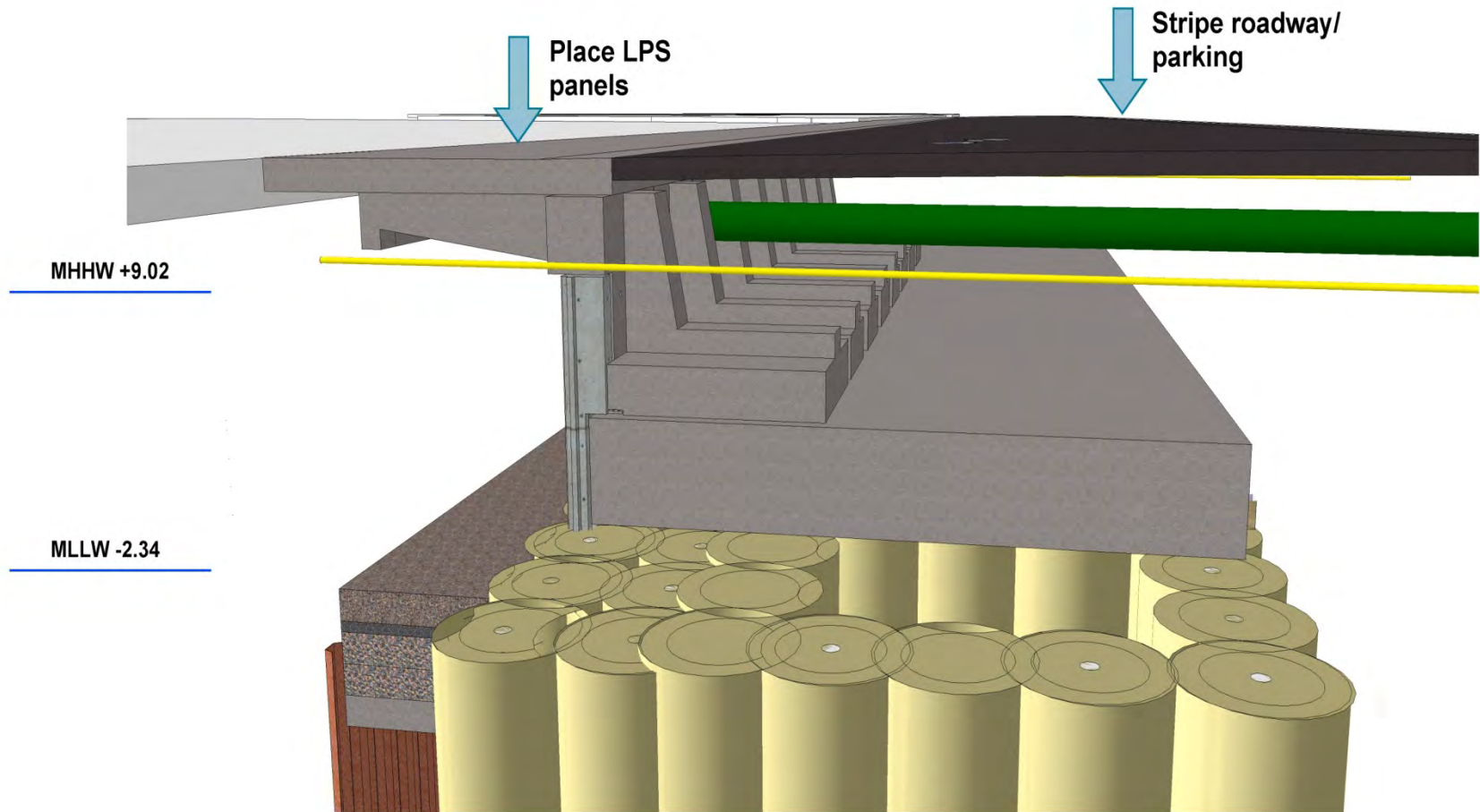
Begin Jet Grouting



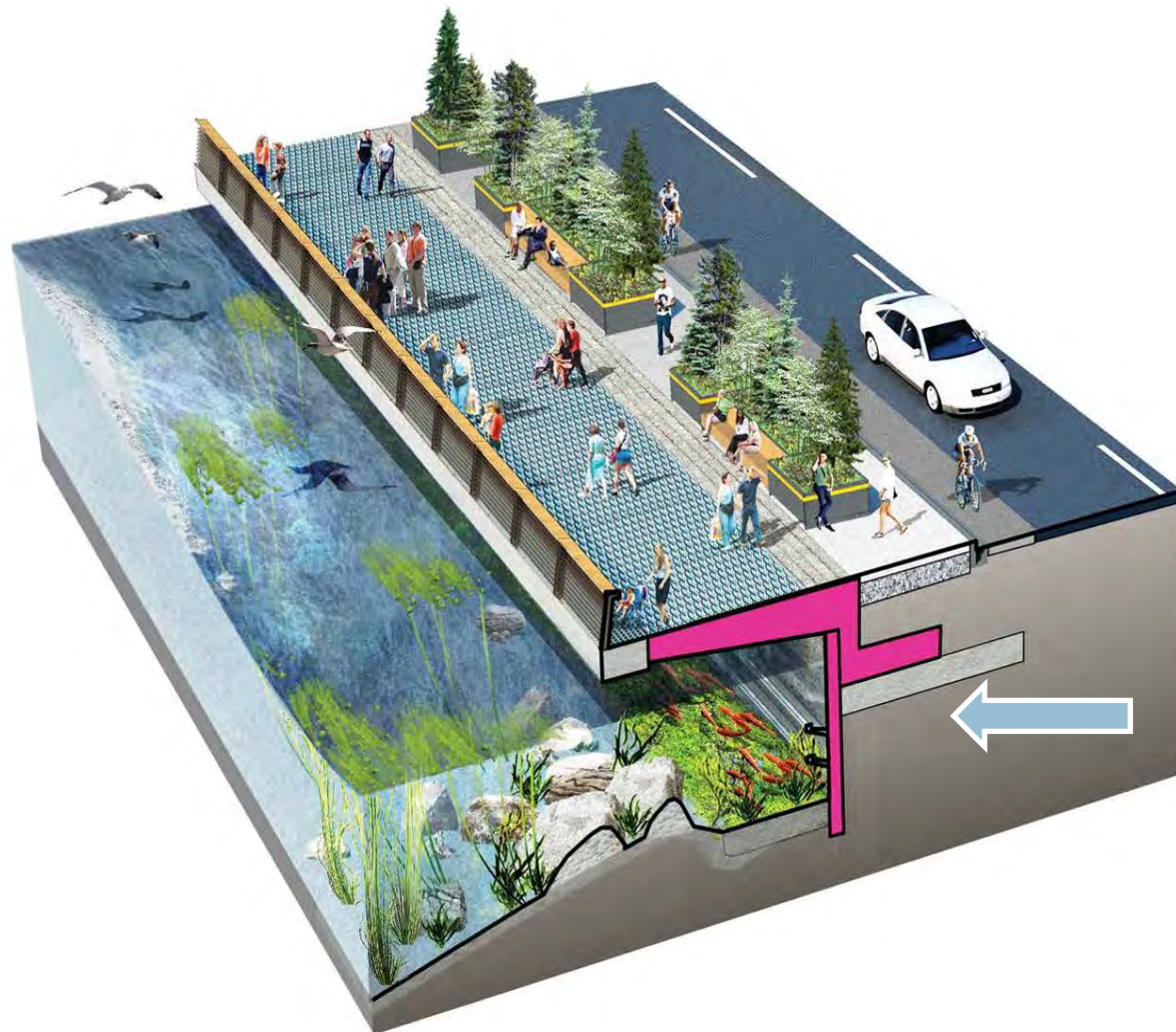
Install New Superstructure



Restore Utilities, Install Final Sidewalk and Restored Roadway



Design – Restored Condition (Schematic)

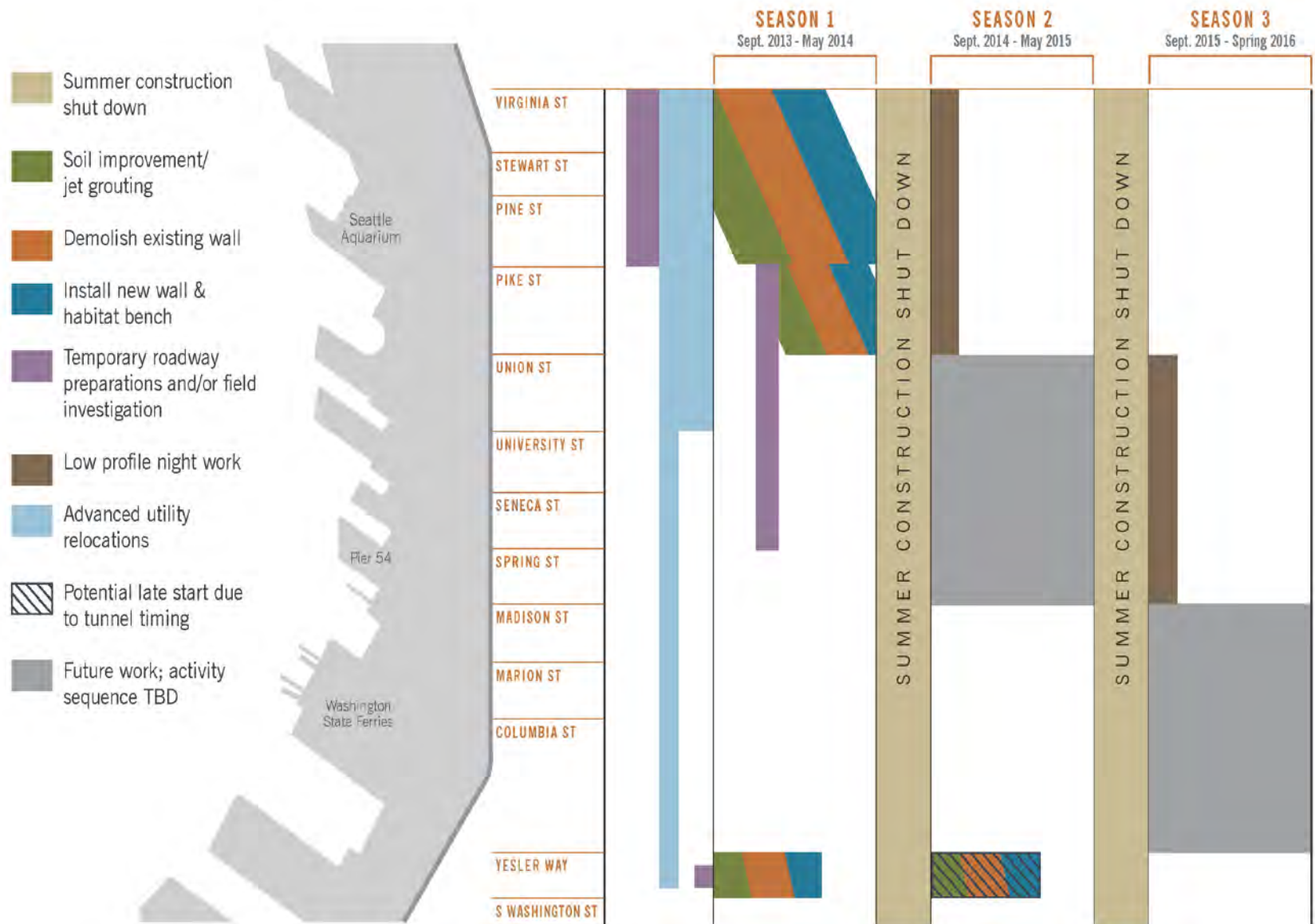


**New cantilever
and seawall face**

Construction Overview



Construction Over Three Seasons



Pre-Construction Activities

- **Utility relocations**
- **Utility pole siting**
- **Temporary roadway paving**



Early Work

April 1 – May 23, 2013



Season 1 Overview

(September 2013 - May 2014)



Season 2 Overview

(September 2014- May 2015)

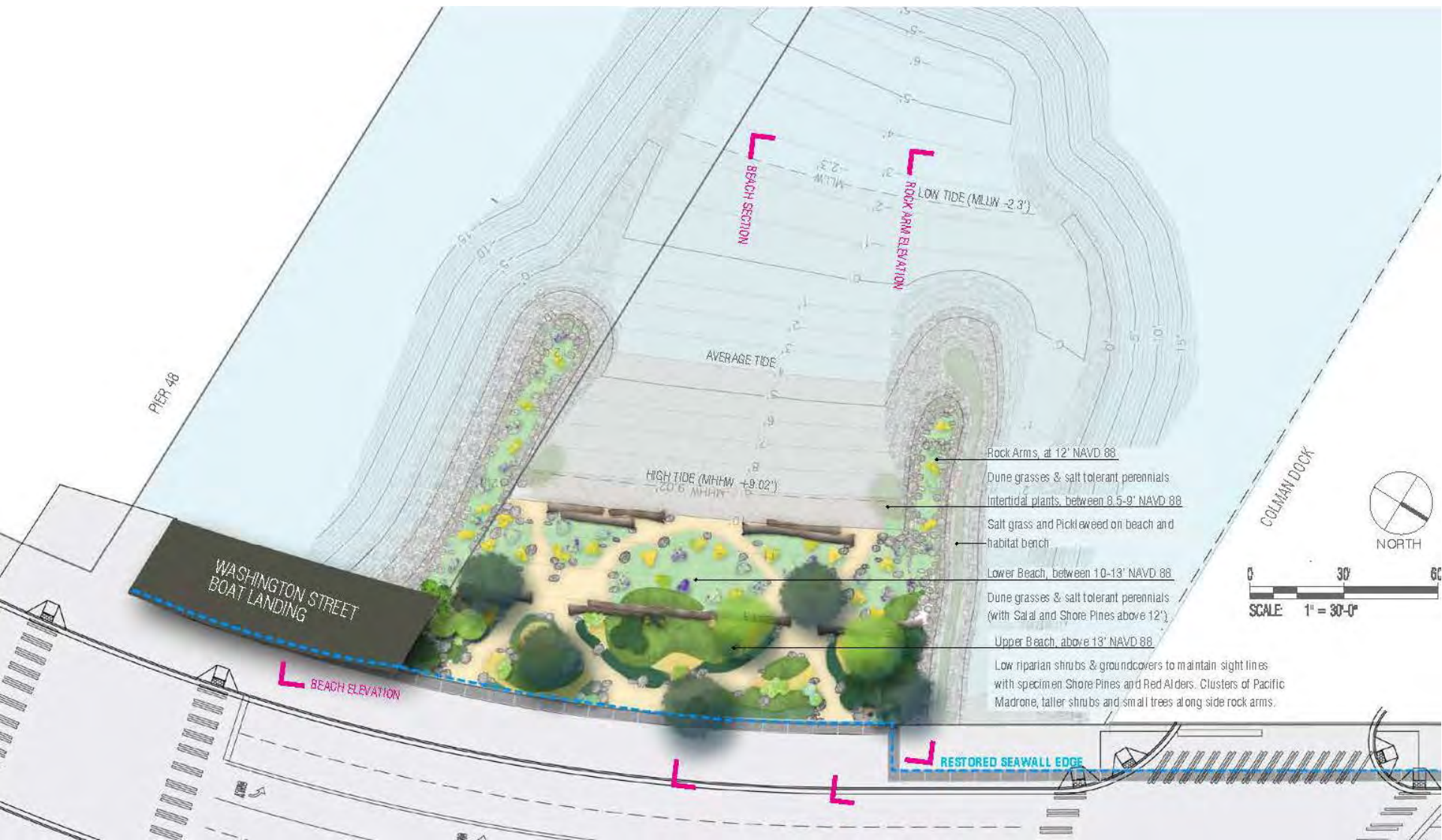


Season 3 Overview

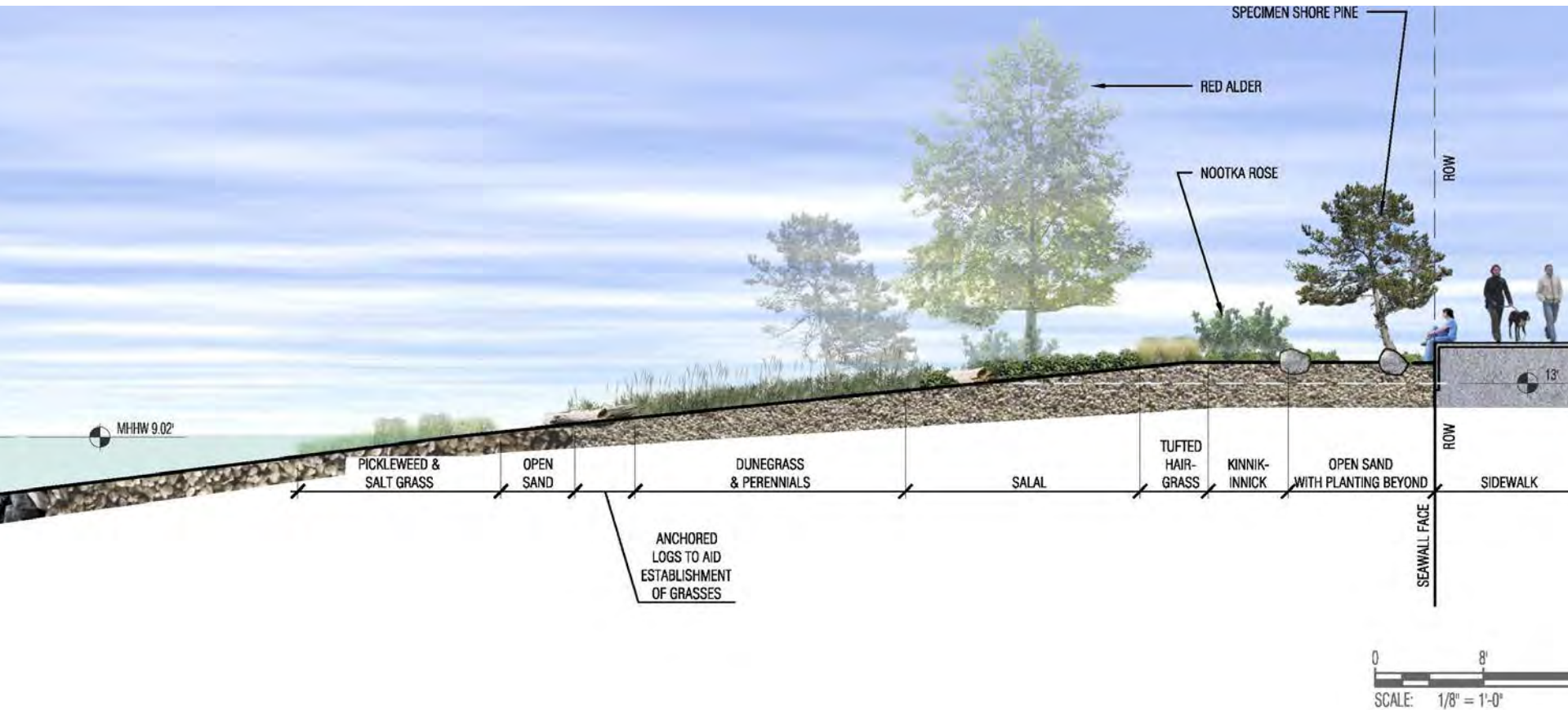
(September 2015 – Spring 2016)



Zone 1 Beach Design



Planting Design, Looking North





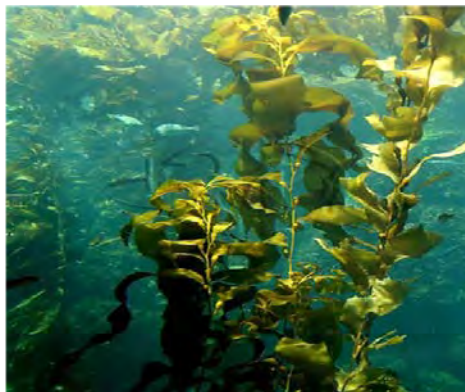
Contact Information

Project Contact

Email: seawall@seattle.gov

Website: <http://www.seattle.gov/transportation/seawall.htm>

Project Hotline: 206-618-8584





Waterfront Seattle

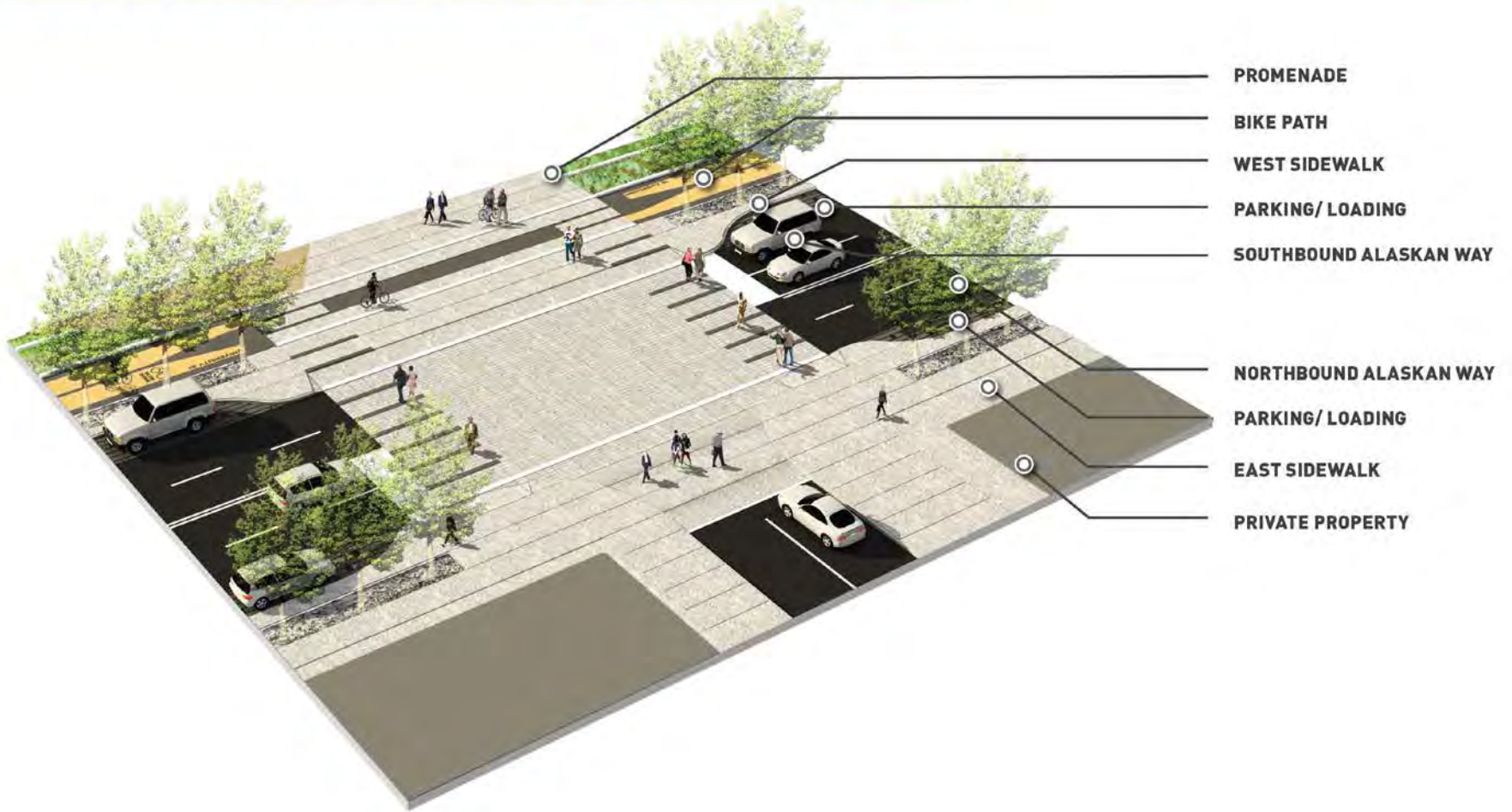


Waterfront Seattle





Pedestrian-Friendly Crossings















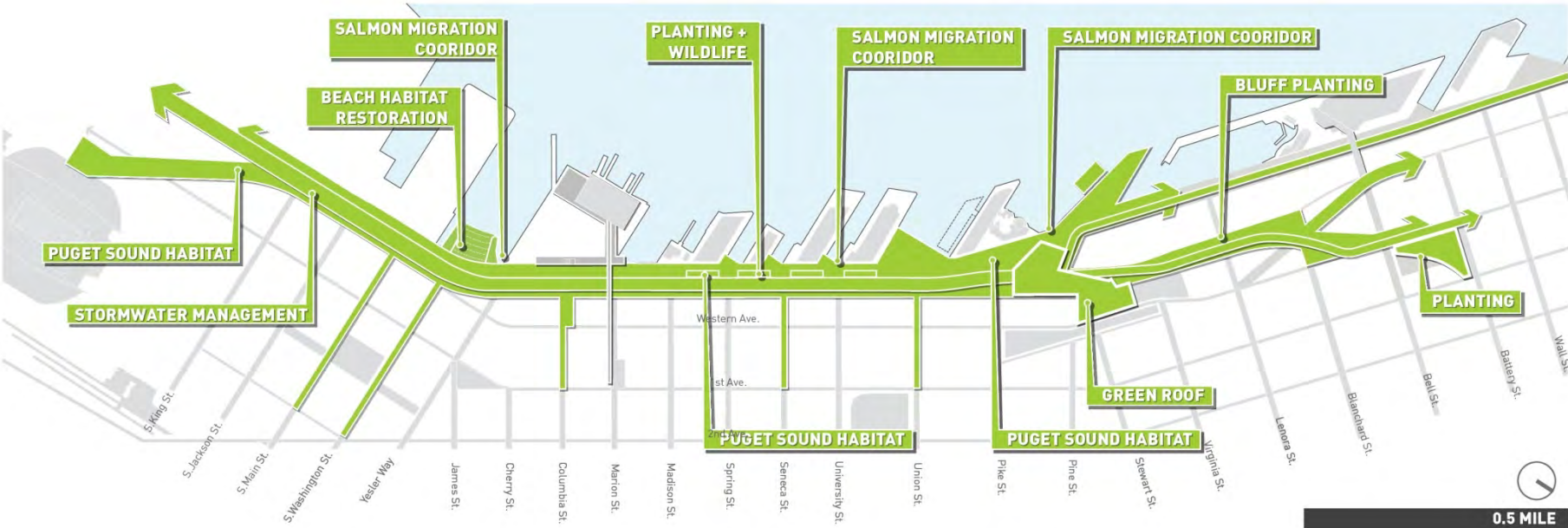






CONTINUOUS PROGRAM

SUSTAINABILITY



STORMWATER



HABITAT



HEALTH



MATERIALS



ENERGY





THANK YOU