



Climate Action Plan

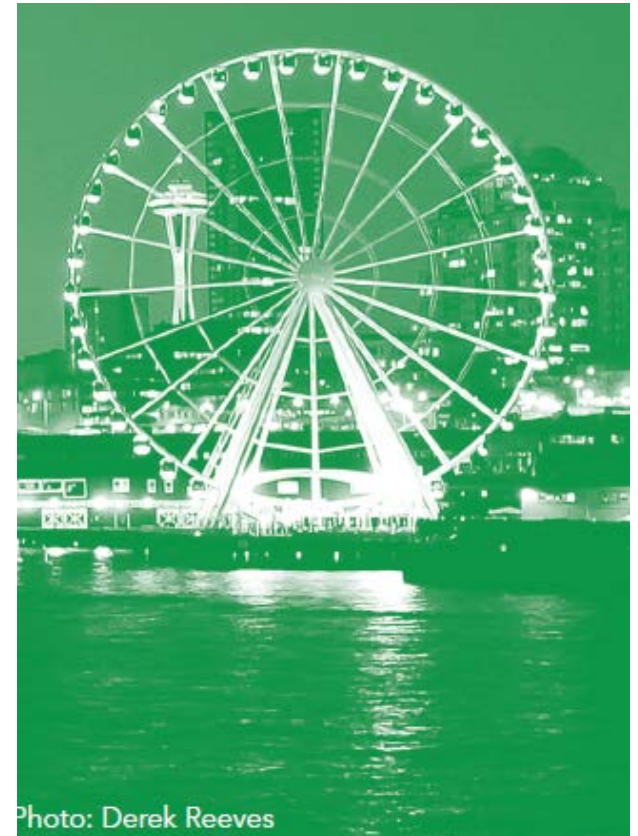
Urban Forestry Commission

March 6, 2013



2013 Climate Action Goals

- Carbon neutral by 2050
 - 2020 & 2030 intermediate targets
 - Transportation
 - Passenger VMT Reduction
 - Fuel Efficiency
 - Building Energy
 - Energy Efficiency
 - Clean Energy
 - Waste
 - Waste Reduction
 - Disposal Emissions Reduction
- Prepare for climate impacts



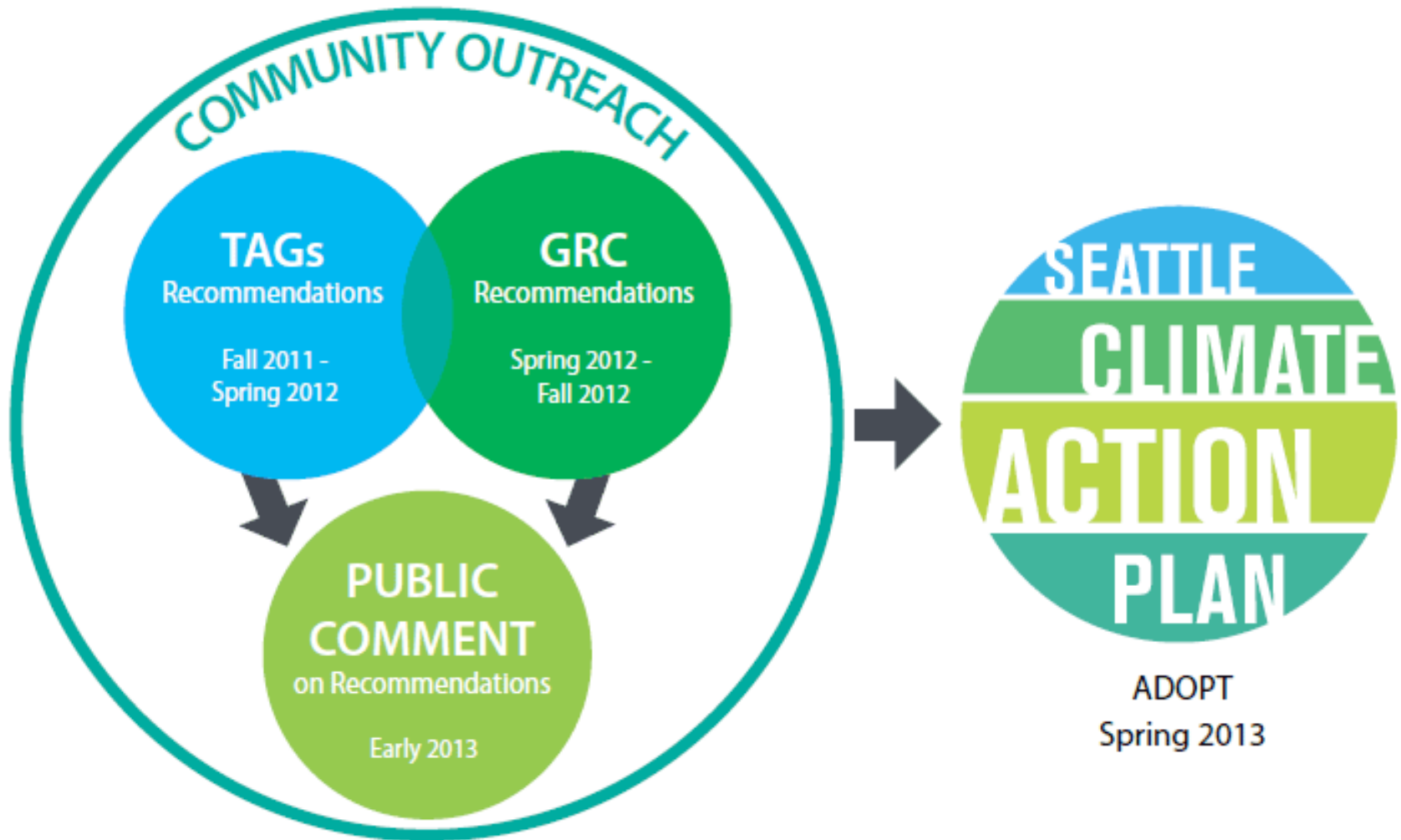


Climate Action Plan Overview

- Key Emissions Sectors
 - Transportation & Land Use
 - Building Energy
 - Waste
- Adapting to Climate Impacts
- Community Engagement
- What You Can Do
- What Others Are Doing



Climate Action Plan Process





Community Input During TAG & GRC Processes

- Online Survey (480 responses)
- Futurewise & Great City Brownbags
- Neighborhood Associations
- District Councils
- Seattle Chamber of Commerce
- Seattle Rotary Club
- Stakeholder presentations
- City Advisory Boards & Commissions
- Website, Blog posts, Newsletter
- Open House



Community Input

Under-Represented Communities

- Public Outreach & Engagement Liaisons
 - Community conversations using visuals showing community outcomes of the proposed strategies
 - 14 Meetings in 9 Communities, in native language
 - 305 Residents participated
- Ethnic Media
 - Stories ran in 5 publications



GREEN RIBBON COMMISSION RECOMMENDATIONS





Green Ribbon Commission

- 26 Community Leaders
- 14 Meetings over 6 Months
- Informed by Technical Advisory Group input
- Bold, Long-Term Strategies
- Quick Start Actions
- Guiding Principles





Building Energy Use

- Pricing and Financing
- Efficient Operations
- Efficient Construction
- Low-Carbon Fuels



Source: Seattle Business Magazine



Transportation & Land Use

- Funding
- Pricing
- Policy & Planning
- Infrastructure & Service
- Transportation Demand Management
- Parking Management
- Vehicle Fuels & Technologies





Waste

- Implement Solid Waste Plan
- Achieve aggressive recycling rates
- Reduce emissions from collections, processing, and disposal
- Reduce waste generation





Adapting to Climate Impacts

- Comprehensive Assessment & Planning
- Natural Systems
- Utility Impacts
- Land Use & the Built Environment
- Community Preparedness





Trees in the Climate Context

Trees and other vegetation:

- are at risk from emerging disease and insect pests and may be weakened by changes in growing conditions,
- support wildlife and enhance the livability of developed urban areas, and
- help keep our city cooler by mitigating the heat island effect and reducing stormwater runoff.



Urban Forest Actions

- Thermal imaging to identify areas impacted by heat events
- Restore all 2500 acres of forested parkland by 2025 through the GSP
- Urban Creeks Projects
- Green Stormwater Infrastructure



Next Steps

- Considering TAG, GRC, and community input to develop the Climate Action Plan
- Plan release on Earth Day, April 22nd

