



**imagine**  
GREATER  
DOWNTOWN

Big Ideas for the Heart of Seattle



# Seattle Transit Advisory Board

January 3, 2019

## OVERVIEW

- Imagine what the heart of Seattle could look like in 20 years for people of all ages, races, cultures, incomes, and abilities
  - Great public spaces
  - Lively streets
  - Ways to get there
- Develop concepts that are responsive to community interest for vibrant, accessible, safe, and affordable greater downtown public places



## PARTNERSHIP AND PURPOSE



In coordination with the Washington State Department of Transportation and the Port of Seattle

Working together to create a shared mobility and urban design vision for the heart of Seattle that anticipates future needs in the face of significant growth and change

# GREATER DOWNTOWN

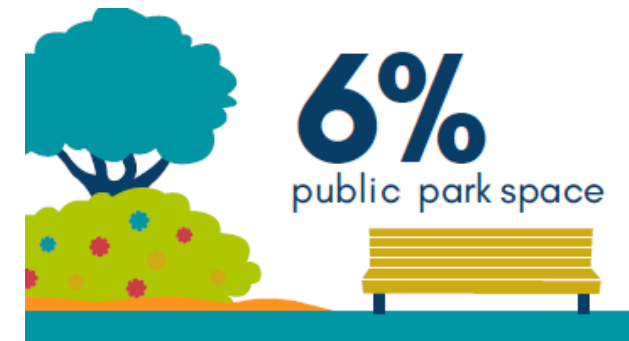
Greater Downtown is made up of ten of the fastest growing neighborhoods in the city of Seattle:

- Uptown
- South Lake Union
- Capitol Hill
- Pike/Pine
- First Hill
- Denny Triangle
- Belltown
- Commercial Core
- Chinatown International District
- Pioneer Square



## GREATER DOWNTOWN IS GROWING

- How do we design our public spaces to better serve kids, inter-generational families, people of color, and those who currently don't feel welcome downtown?
- How can we better organize our streets to move people efficiently, and cultivate a culture of walking and human scale spaces?
- What's missing today that you would like to see in 2035?



# OUTREACH AND ENGAGEMENT

## Traditional Engagement

- Interactive website to collect ideas from the public – [www.imaginegreaterdowntown.org](http://www.imaginegreaterdowntown.org)
- Pop-up events throughout greater downtown
- Open Houses
- City Boards and Commissions
- Advisory Group

## Race and Social Justice Engagement

- Outreach led by Department of Neighborhoods Community Liaisons
  - Community Conversations
  - Participating in other ongoing events in diverse communities



## BIG IDEAS

1. A Quality Transit Experience
2. Streets as Places
3. Freeway Stitch / Urban Repairs
4. Connect to and use the Lake and Sound
5. Welcoming, Inclusive, Complete Neighborhoods
6. Parks, Recreation and Nature
7. Jackson Street Hub as a People Place
8. Heart of Greater Downtown: Westlake Hub
9. Premium Mobility Networks
10. Carbon Neutral
11. New Mobility to Benefit People and Climate



[www.imaginegreaterdowntown.org](http://www.imaginegreaterdowntown.org)



# A QUALITY TRANSIT EXPERIENCE

- Riding transit should not have unfair geographic implications (e.g. overcrowding or bus frequency might impact one user group over another based on race, redlining and housing affordability)
- Make transit stops and hubs gateways that celebrate arrivals through art, wayfinding, signage, celebration of local leaders of color, culture, history, and enhance the public realm
- Make it easier to understand transit systems by reducing barriers (e.g. exact fare payment, language barriers, and lack of understanding routes and transit systems)
- Waiting for transit feels safe and secure and includes weather protection, seating, and lighting





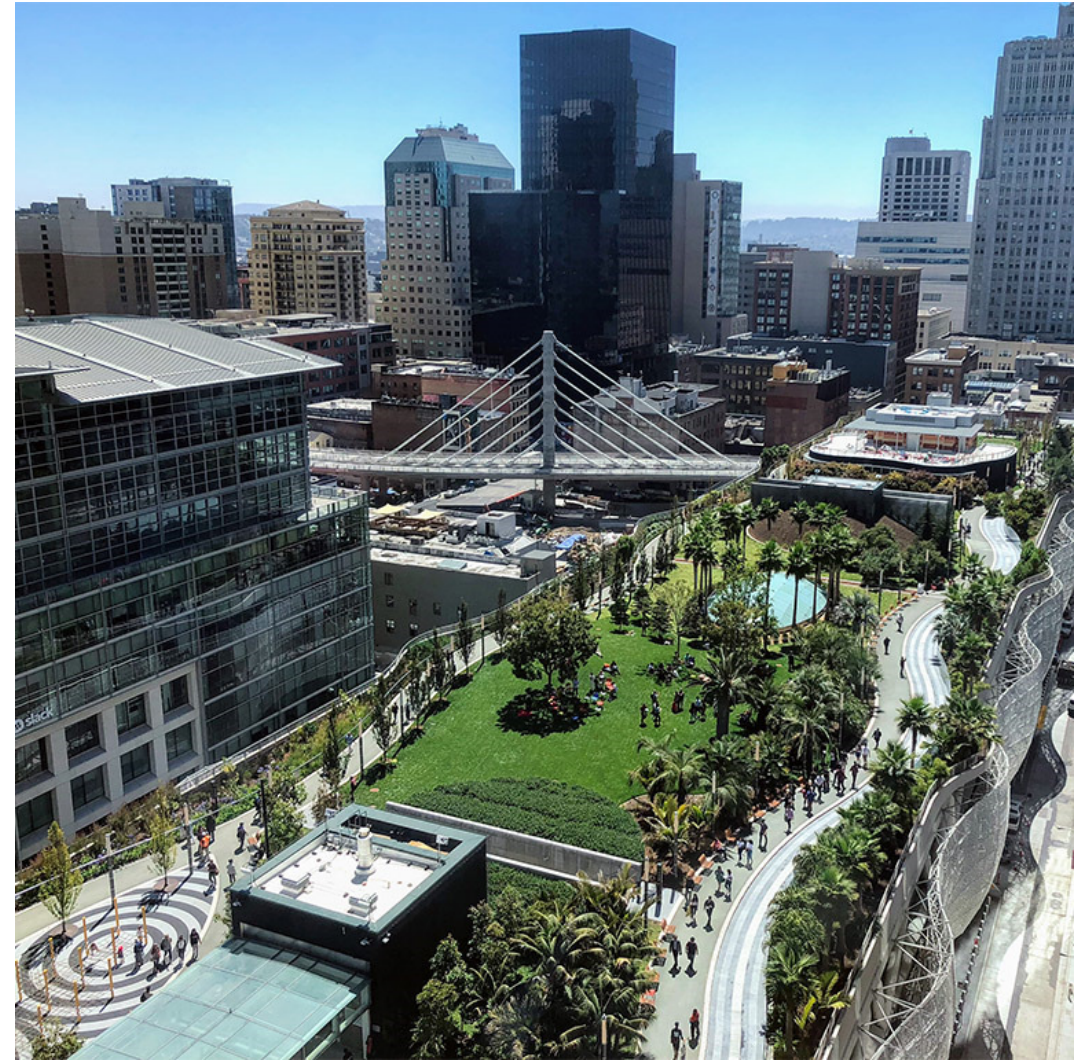
## HEART OF GREATER DOWNTOWN: WESTLAKE HUB

- Westlake hub is an easily navigable transportation hub in the center of Greater Downtown
- Westlake is the geographic heart of greater downtown with flexible public spaces and places for cultural events
- Place for people: prioritize pedestrian movement and connections to transit over private automobiles



# JACKSON HUB: CELEBRATE CULTURE AND ARRIVAL, CREATE MOBILITY CONNECTIONS

- The Jackson Hub is an important and welcoming gateway destination to Chinatown-International District, the waterfront, and the city
- The hub becomes a destination, through engaging programming in surrounding plaza spaces and with local businesses
- The hub offers seamless transfers and connections between the Link, Amtrak, Sounder, buses, streetcar and other modes
- The hub features and celebrates surrounding neighborhoods' histories and cultures
- Jackson Hub continues to support mixed-income, multicultural neighborhoods that include current residents and businesses



# TIMELINE

- August 2018
  - Project begins
  - Website launch to gather big ideas
  - Outreach to raise awareness and find participation opportunities
- September – December 2018
  - Identify and refine Big Ideas and Transformative Moves
  - Outreach and engagement continues
- January – March 2019
  - Prioritize big ideas and key moves
  - Collect public feedback on priorities
  - Public open house in February





What can you imagine for the heart of Seattle?  
[www.imaginegreaterdowntown.org](http://www.imaginegreaterdowntown.org)

[Diane.Wiatr@Seattle.gov](mailto:Diane.Wiatr@Seattle.gov)  
[Lizzie.Moll@Seattle.gov](mailto:Lizzie.Moll@Seattle.gov)

Imagine Greater Downtown is a partnership between



City of Seattle



King County



SOUNDTRANSIT



Downtown  
Seattle  
Association

In coordination with The Port of Seattle and WSDOT