

# Paving Projects

Subproject Title	Own/Manage Div	Q4 2014			Q1 2015		
		Oct	Nov	Dec	Jan	Feb	Mar
23RD AVE CORRIDOR IMPROVEMENTS	CPRS/CPRS	Ad 10/29		CA	NTP		
23RD AVE CORRIDOR IMPROVEMENTS - Central Area Neighborhood	CPRS/CPRS	Ad 10/15	CA	NTP			
23RD AVE CORRIDOR IMPROVEMENTS - Central Area Neighborhood	CPRS/CPRS		30%			60%	
23RD AVE CORRIDOR IMPROVEMENTS - Ph 2	CPRS/CPRS			20%			
23RD AVE CORRIDOR IMPROVEMENTS - Ph 3	CPRS/CPRS			60%			
3RD AVE CORRIDOR IMPROVEMENTS - 3rd Ave	CPRS/CPRS					CC	CP
3RD AVE CORRIDOR IMPROVEMENTS - 3rd Ave RTA Area Improvements	CPRS/CPRS			CC	CP		
AAC - 1st Ave	SM/CPRS						
AAC - 3rd Ave	SM/CPRS		100%		Ad 1/20	CA	
AAC - Delridge Way SW	SM/CPRS			CC, CP			
AAC - Holman Road	SM/CPRS	SC		PC			
AAC - Meridian Ave N	SM/CPRS						30%
AAC - N/NW 85th St	SM/CPRS	CC, CP					
AAC - NE 125th/Sand Point Way	SM/CPRS	PC				CC	CP
AAC - Northgate/N 105th	SM/CPRS		SC	PC			
AAC - Ravenna Blvd	SM/CPRS	CC, CP					
AAC - Renton Ave S - Phase I	SM/CPRS		60%		90%	100%	
AAC - Renton Ave S - Phase II	SM/CPRS						
AAC - Roosevelt	SM/CPRS				90%		100%
AAC - Spokane St	SM/CPRS						30%

Seattle Freight Advisory Board  
February 17, 2015

# SDOT's mission & vision

Mission: delivering a first-rate transportation system for Seattle.



Vision: a vibrant Seattle with connected people, places, and products.

# SDOT's values



# Presentation Overview

Who's Who and What's What in Paving

Project Selection from Backlog

Funding Past and Future

2015 & 2016 Projects

Future Paving Projects

Other Projects with Paving

# Who & What

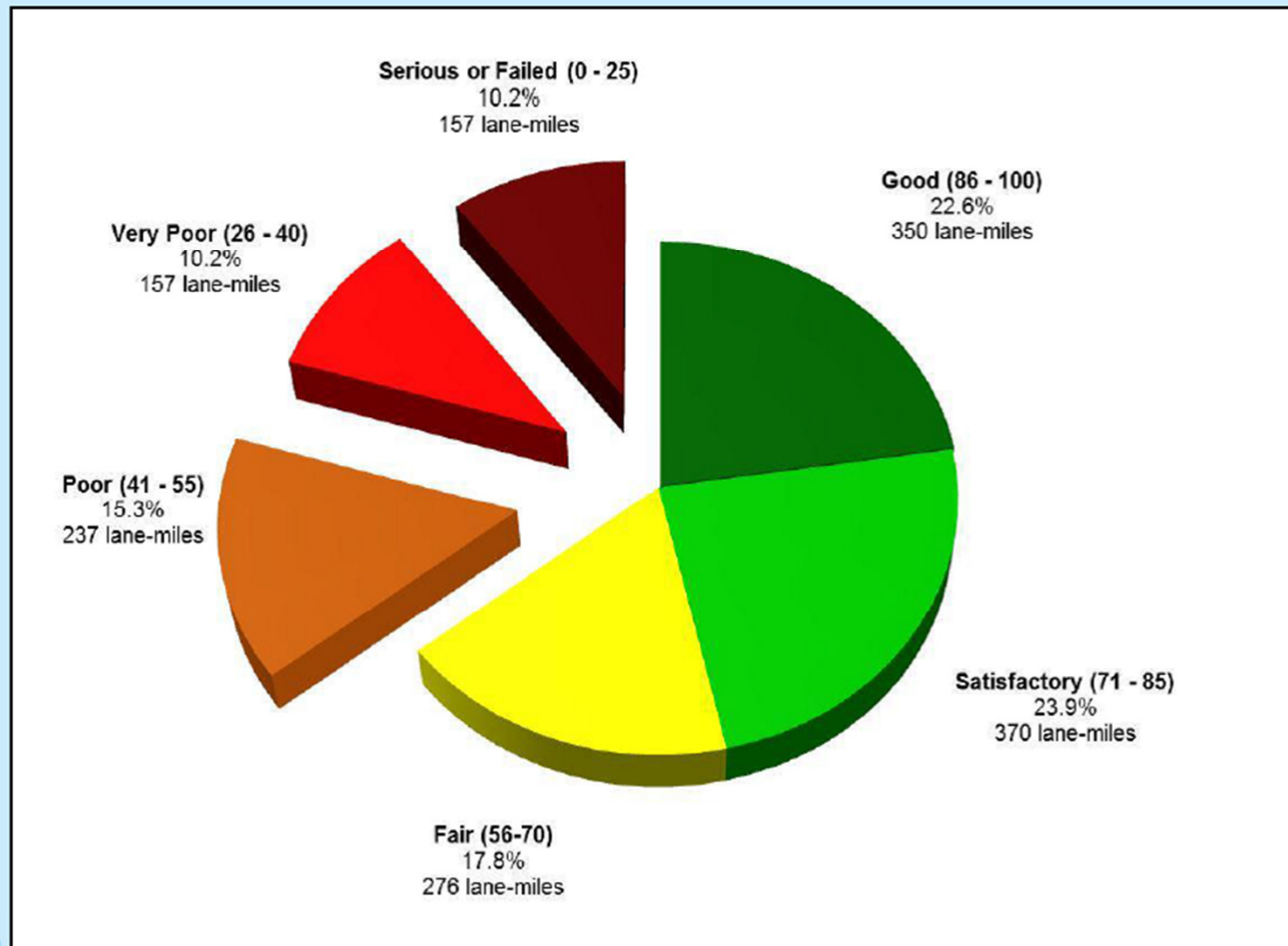
- Street Maintenance as internal “client”
- CPRS as project management
  - Design
  - Permitting
  - Construction
- Not pothole repair or resurfacing
- Contracted work &/or design

# Project Selection

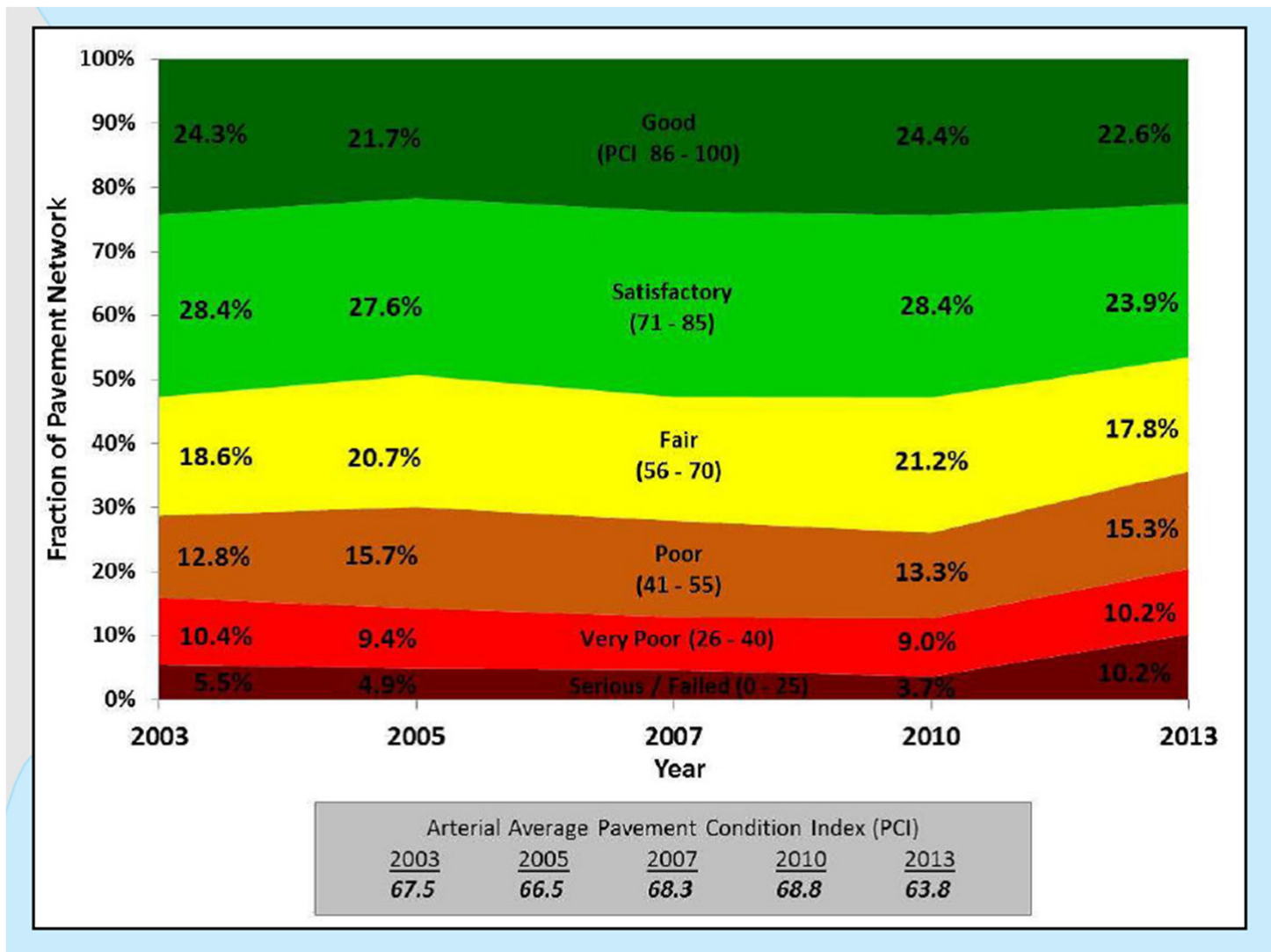
- Condition, degradation rates, maintenance costs
- Traffic volumes including transit, freight, pedestrian and bicycle
- Grants and other leveraging
- Utility coordination and grouping locations
- Citizen complaints and claims
- Equity and geographic balance

# Paving Backlog

## 2013 Arterial Pavement Condition



# Paving Backlog



# Paving Funding

- BTG primary source
- Grants from Feds, State, PSRC
- Cost sharing with other agencies
- Move Seattle potential future source
- Has not been funding for non-arterials

# 2015 Projects

Renton Ave SE Phase 1 – Holden to 51<sup>st</sup> Ave SE  
widening bike lane

Roosevelt Avenue NE – Fuhrman Ave NE to NE 65<sup>th</sup> Street  
PBL to 65th rather than 45th

23rd Ave Corridor Project – Phase 1  
Greenway paralleling 23rd

# 2016 Projects

Renton Ave SE - Phase 2

23rd Ave Corridor Project – Phases 2&3 (construction in 2017)

Meridian Ave – N 103<sup>rd</sup> Street to N 110<sup>th</sup> Street

South Spokane Street – East Marginal Way to Klickitat

South Lander Street – 1<sup>st</sup> Ave South to Airport Way South

3<sup>rd</sup> Avenue – Denny Way to Virginia Street

Fauntleroy Way SW – 35<sup>th</sup> Ave SW to SW Alaska Street

# Future Paving Plans

- Dependency on Funding
- \$20M / year?
- \$50M / year?
- Pace has effect on prioritization

# Other Projects with Paving

- Transit Projects
  - Greenwood
  - East Marginal Way
  - Delridge Way
  - Eastlake & Fairview
- Alaskan Way Viaduct
- Elliott Bay Seawall
- City Center Streetcar
- Denny Substation

# Thanks!

Art Brochet, Communications Lead, CPRS, [art.brochet@seattle.gov](mailto:art.brochet@seattle.gov)

<http://www.seattle.gov/transportation>

