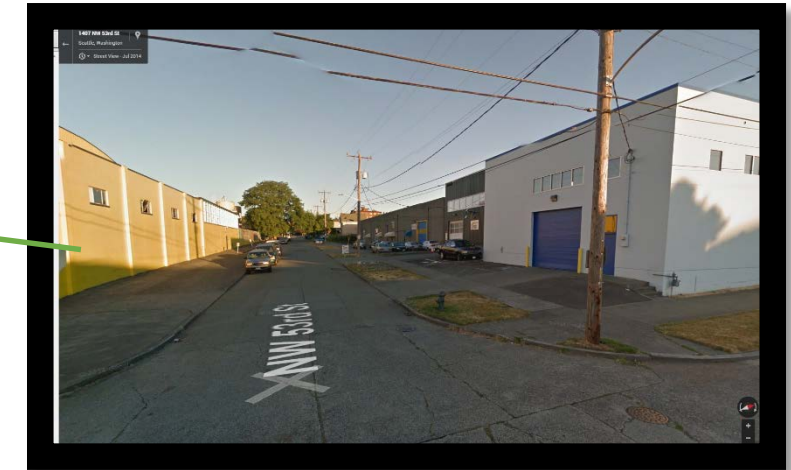
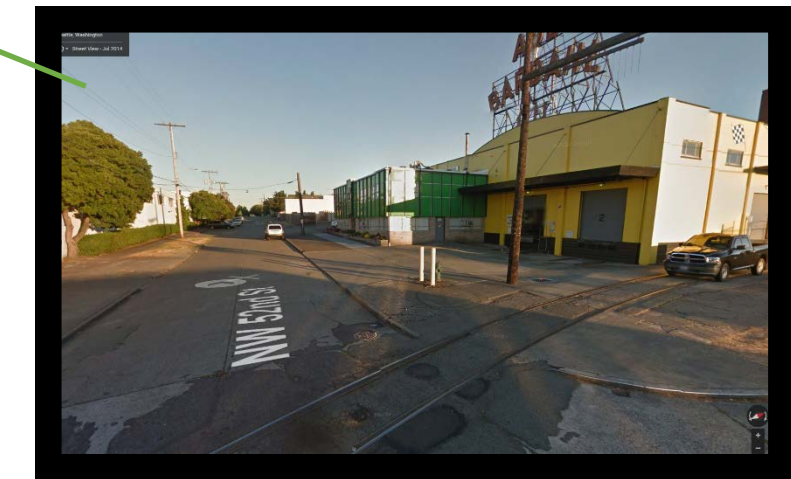


54th Street NW
Minor Street
providing freight
access via 14th
Ave NW



53rd Street NW
Minor Street
providing freight
access via 14th
Ave NW



52nd Street NW
Currently used
for freight access
to Bardahl and
other properties
via 14th Ave NW

Seattle Department of Transportation
15th Ave NW BAT Lane Study
Alternative Freight Access
January 15, 2015