

Portage Bay 138 Gate Retrofit & Pump Station 20 Improvement Project

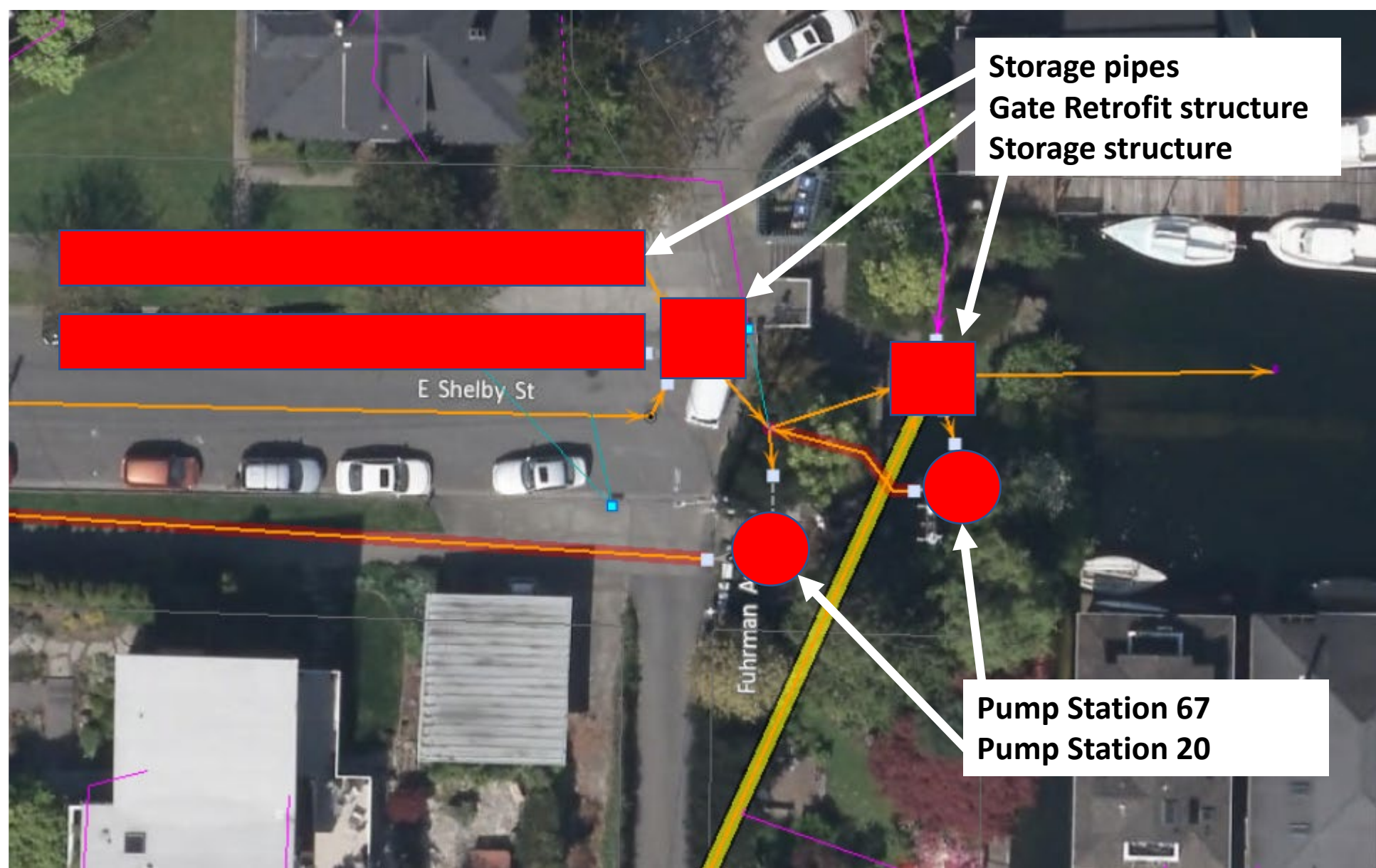
Seattle Public Utilities



City of Seattle

Why are we here?

- E Shelby St is crowded with overflow preventing sewer infrastructure
- Infrastructure requires upgrades to improve function, maintain service reliability, and reduce maintenance needs
- Project required by Consent Decree
- Project is least impactful of all options identified



Construction Area



<div>Loading Zone</div>	Temporary 15-minute load/unload zone	<div>Trench</div> <p>Trenching and electrical conduit installation (<1 week).</p> <p>*For the duration of the project there will be a 15-minute load/unload zone at the NE corner of Boyer Ave E and E Shelby St to allow residents to pick up and drop off items closer to their homes.</p> <p>**Access to driveways will be maintained from 4 p.m. to 8 a.m. on workdays to allow for easy travel to/from work, school, and home (excluding 24-hr/day closures for gate retrofit work and pavement restoration).</p> <p>***Following construction, there will be 24/7 vehicle access closure for pavement restoration (<1 week).</p>
<div>Gate Retrofit Work Area</div>	6 +/- week closure / no vehicle access during work	
<div>Pump Station 20 Work Area</div>	Work will occur within pump station.	
<div>Staging</div>	Equipment staging areas. No on-street parking for duration of project.	

General Construction Impacts

- Construction noise, dirt, dust, and vibration
- Increased construction traffic and large equipment staged in the area
- Residents will continue to have pedestrian access to their homes throughout construction
- Partial road closure and no street parking on E Shelby St throughout construction
- Following construction, the contractor will perform site restoration including pavement restoration at the street-end

Construction Timeline

- Construction is scheduled to begin in early March 2020
- Construction is expected to take about 7 to 9 months
- Typical hours will be weekday, daytime hours. However, evenings and weekend work may be required
- The contractor will provide information on project schedule and sequencing, which SPU will share with residents

Vehicle Access to Street End

- During working hours, we can't guarantee timely access in and out of the street end
- Between 4 p.m. and 8 a.m. on workdays, vehicle access will be maintained
- Residents on the north side of E Shelby St will not have access to driveways for about 6+/- weeks during the gate retrofit work
- Per SDOT, there is no way for SPU to reserve (or quasi-reserve) parking in the right-of-way for construction mitigation purposes

Loading & Unloading

- The contractor will establish a 15-minute load/unload zone at the NE corner of Boyer Ave E and E Shelby St
- This will allow residents to drop off or pick up items closer to your homes
- We will have a designated crew member to assist you in moving items to and from your car to your home during working hours

Solid Waste – Garbage/Recycling/Compost

- You can bring your waste to the same location as you currently do, and our crews will ensure it is moved to a location that can be accessed
- Garbage/Recycling/Compost pick up on E Shelby St and the Fuhrman Ave “alley” will be consolidated to all be collected on Wednesdays
- For residents on the north side of E Shelby St, we will replace the current bins with smaller bins with the same capacity that you currently have accounting for the twice a week garbage pick-up

Emergency Services

- We have informed Seattle Fire Department (SFD) about the project
- SFD is aware of our construction impacts and will have an emergency services plan in place
- SFD has assured us that they will be able to maintain emergency services throughout construction

Postal Deliveries

- SPU contacted USPS, and USPS agreed to coordinate mail delivery throughout construction
- Mailboxes in or near the work area may be temporary relocated to avoid service disruptions

Contact Information

Please visit our website to learn more and sign-up for the project email list so you can receive updates during construction:

www.seattle.gov/utilities/environment-and-conservation/projects/portage-bay-gate-retrofit

If you have additional questions, please contact:

Josh Campbell

Project Manager

josh.campbell@seattle.gov