

# DRAINAGE AND WASTEWATER SOUTH OPERATIONS CENTER



Seattle  
Public  
Utilities

Winter 2018

## The new Seattle Public Utilities South Operations Center is coming to the neighborhood

Seattle Public Utilities (SPU) has recently purchased property at 4500 W Marginal Way SW for use as the new Drainage and Wastewater South Operations Center (SOC). The new facility will increase SPU's operational efficiencies and space, provide closer proximity to our service areas, and create improved facilities for employees.

Over the next few years, we will design and construct major renovations to the existing building, including:

- Replacing and improving building siding, roof, windows and doors
- Upgrading interior, finishes and furnishings
- Improving major utilities and building systems
- Installing parking, new landscaping and site drainage
- Incorporating sustainable building and site features, such as electric vehicle charging stations
- Seeking LEED Gold rating for building renovation

### Purpose of the new South Operations Center

The SOC will be home to some of SPU's Drainage and Wastewater field employees, work vehicles and equipment storage. These field employees clean and repair the City of Seattle's sewer and drainage systems, investigate waterway pollution, provide emergency response to storm events and natural disasters, and more.

### Project map



Rendering of new SPU South Operations Center

## Next steps

As early as 2018, SPU may use the site for interim activities, such as a vehicle and materials storage facility to enable crews to coordinate operation of multiple SPU programs from this location. SPU plans to finalize the design of the SOC by late 2018 and begin construction in 2019, as shown in the project schedule below.

## Project schedule



SPU is seeking a LEED Gold rating for the SOC by incorporating sustainable features such as:

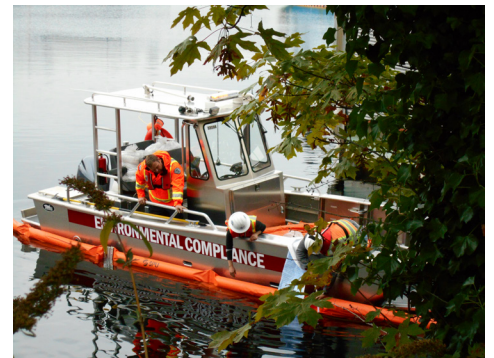
- Improved stormwater drainage
- Native landscaping
- Low-flow plumbing fixtures
- High-efficiency lighting and mechanical systems
- Charging stations for electric fleet vehicles
- A rainwater harvesting system that could be used to supply water needed for vactor trucks
- Solar panels for on-site energy reduction



*Crews will use rainwater to supply the water needed for vactor trucks at the new SOC.*



*SPU will have charging stations at the new SOC for electric fleet vehicles.*



*The new SOC will have space for work vehicles and equipment, including SPU boats, used to protect bodies of water in the region.*

## For more information

If you have questions about the project, please feel free to contact us by phone, email or by visiting our website.

**Call:** (206) 233-7265

**Email:** [Thomas.Fawthrop@seattle.gov](mailto:Thomas.Fawthrop@seattle.gov)

**Website:** <http://www.seattle.gov/util/SouthOperationsCenter>