

Fauntleroy Creek

Channel Encroachment



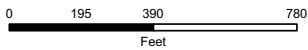
The City of Seattle



Produced by the City of Seattle
June 2007

THE CITY OF SEATTLE, 2007. All rights reserved

No guarantee of any sort implied, including accuracy, completeness, or fitness for use.



Legend

Channel Encroachment Type

Culvert, bridge, road or building within 100 ft of stream bank

Bank armoring

No encroachment within 100 ft.

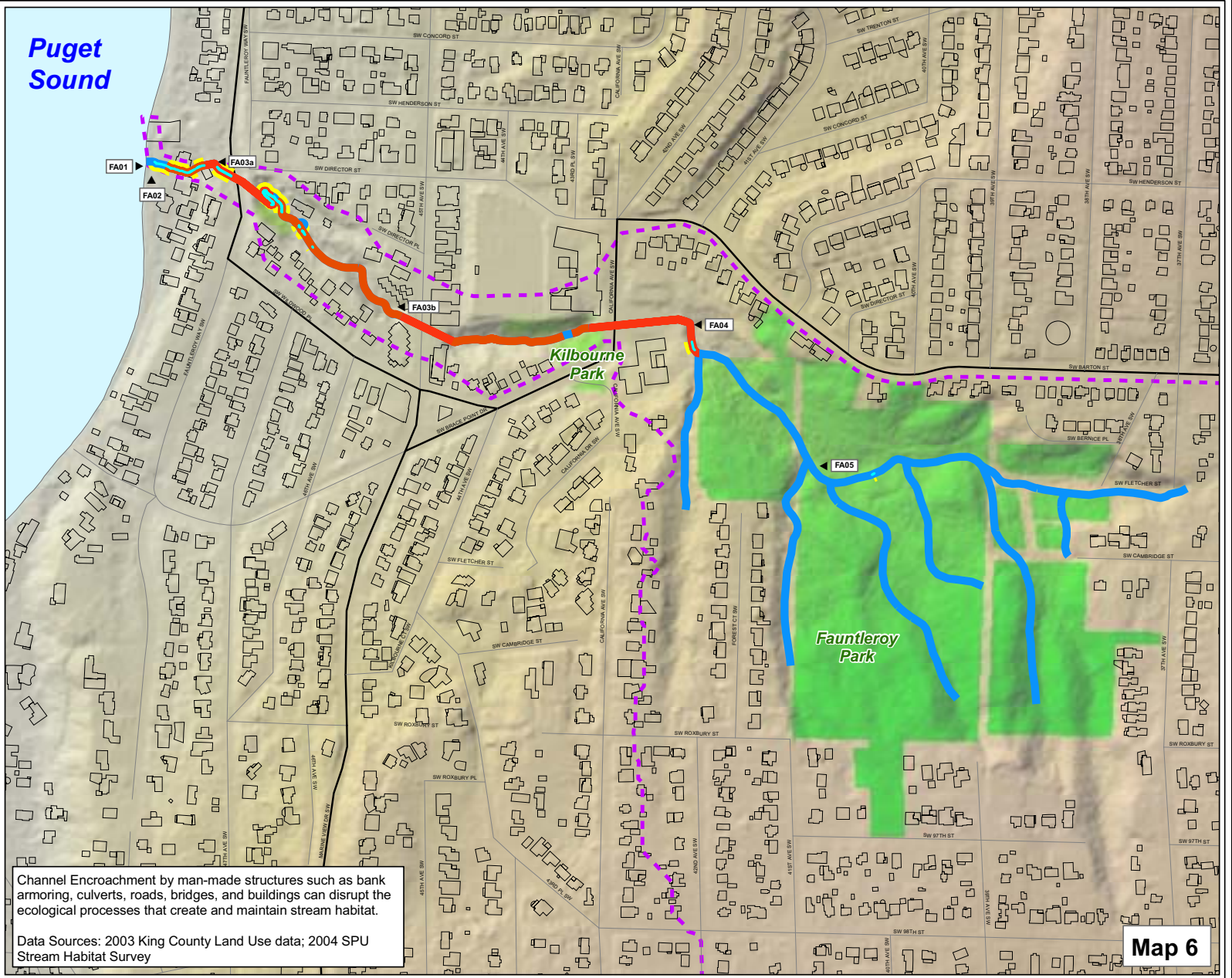
City Boundary

Streets

Watershed Boundary*

Parks

Buildings



Channel Encroachment by man-made structures such as bank armoring, culverts, roads, bridges, and buildings can disrupt the ecological processes that create and maintain stream habitat.

Data Sources: 2003 King County Land Use data; 2004 SPU Stream Habitat Survey

*Map doesn't show entire watershed boundary, refer to Figure 1-1 for entire watershed boundary.