



ENHANCING OUR COMMUNITIES with Natural Drainage Systems (NDS) and Pedestrian Improvements

Natural Drainage Systems:

What are they & why do we need them?

When it rains in the Delridge and Westwood neighborhoods, pollution from our streets runs into Longfellow Creek untreated. This is not healthy for the creek or for people. **The good news is: there is something we can do.**

Natural Drainage Systems consist of shallow depressions in the public right-of-way, or “planter strip,” filled with deep-rooted plants and spongy soils that temporarily hold and clean polluted stormwater from streets and sidewalks. These features capture and clean pollutants before they can reach the creek.



Seattle Public Utilities (SPU) is planning to build natural drainage systems in your neighborhood in 2021. We are partnering with Seattle Department of Transportation (SDOT), Office of Arts & Culture 1% for the arts, and King County Flood Control District.



Community benefits

Natural Drainage Systems offer multiple benefits to local neighborhoods and ecosystems, including:

- Greener, more attractive neighborhoods
- Lower risk of flooding
- Creation of habitat along our streets
- Healthier creek ecosystems
- Calmer traffic patterns
- More street trees
- Pedestrian improvements

Learn more at: seattle.gov/util/longfellowNDS






Watershed Boundary



Seattle Public Utilities



WEST SEATTLE BRIDGE

SW GENESEE ST

**KENYON STREET
PROJECT SITE**

**24TH AVE SW
PROJECT SITE**

SW BRANDON ST

SW MORGAN ST

LONGFELLOW CREEK

LONGFELLOW CREEK WATERSHED BOUNDARY

PUGET SOUND/ SALISH SEA

LEGEND



WATERSHED AREA
FLOWING INTO
LONGFELLOW CREEK

LONGFELLOW CREEK

LONGFELLOW CREEK
(PIPED)

SYLVAN WAY NDS SITE

KENYON NDS SITE

24TH NDS SITE

SW HOLDEN ST

SW KENYON ST

SW THISTLE ST

SW CLOVERDALE ST

SW TRENTON ST

SW HENDERSON ST

SW BARTON ST

SW ROXBURY ST



**ROXHILL
PARK**

24TH AVE SW

PROJECT AREA



City of Seattle

The Levy to

MOVE SEATTLE



A row of six blue circular icons representing different modes of transportation: a train, a truck, a bus, a car, a bicycle, and a pedestrian.



KING COUNTY
FLOOD CONTROL
DISTRICT

APRIL 2020
60% DESIGN PHASE

WHERE WE ARE NOW

...and where we're going

The Longfellow Creek Natural Drainage System (NDS) Project has completed 30% design outreach and incorporated community feedback in the early design.

At the 60% Design Phase, we present updated street and drainage improvements and answer questions from the community. We finalize the project scope based on regulatory requirements and project funding.

30% INPUTS

- Neighborhood priorities
- Current drainage conditions
- Location of utilities
- Local topography + mature trees
- Rainfall runoff patterns along the street
- Soil testing + analysis
- Location of homes + paths
- Location of driveways
- On-street parking patterns
- City right-of-way impacts
- Zoning code
- Projected construction costs
- Maintenance of NDS
- Permitting
- Community concerns

60% INPUTS

- Neighborhood priorities
- Local ecosystem needs
- Detailed utility locations + impacts
- Planting palettes & new street trees
- NDS sizing adjustments
- Refinements to design dimensions + details
- City right-of-way impacts
- Balance of costs with budget
- Maintenance of NDS
- Permitting
- Community concerns

FINAL INPUTS

- Accessibility impacts
- Construction costs + impacts
- Ongoing maintenance costs + responsibility
- Permitting requirements
- Construction questions

**A Healthier & Safer
Longfellow Creek!**



**30%
DESIGN**

**OUTREACH FOR
30% DESIGN**

MID 2019

**SITING, FIELD INVESTIGATIONS
SURVEY + CONCEPT DEVELOPMENT**

2017 to 2018

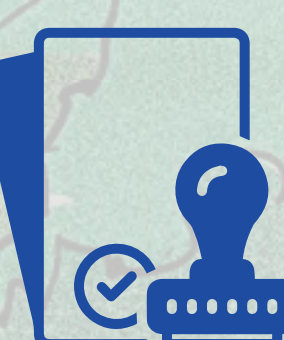


**60%
DESIGN**

**OUTREACH FOR
60% DESIGN**

EARLY 2020

We Are
Here



**FINAL
DESIGN**

**PRE-CONSTRUCTION
OUTREACH**

LATE 2020



CONSTRUCTION

NEARBY CITY PROJECTS ENTERING CONSTRUCTION

PROJECT	EST. SCHEDULE*
35th/Avalon Paving SW Seattle Paving	IN CONSTRUCTION NOW
SDOT Delridge Way SW RapidRide H Line	MID 2020
West Seattle Neighborhood Greenway Phase 2	MID 2020
King County Metro RapidRide H Line	MID 2020

*Project schedules subject to change

2019

2020

2021



City of Seattle



APRIL 2020
60% DESIGN PHASE

WHAT WE HEARD

for SW Kenyon St at 24th Ave SW



Seattle
Public
Utilities

...and what we're including in our design



Fix the path so it's not so muddy



Add more lighting



Improve visibility along the path



Replace the bridge



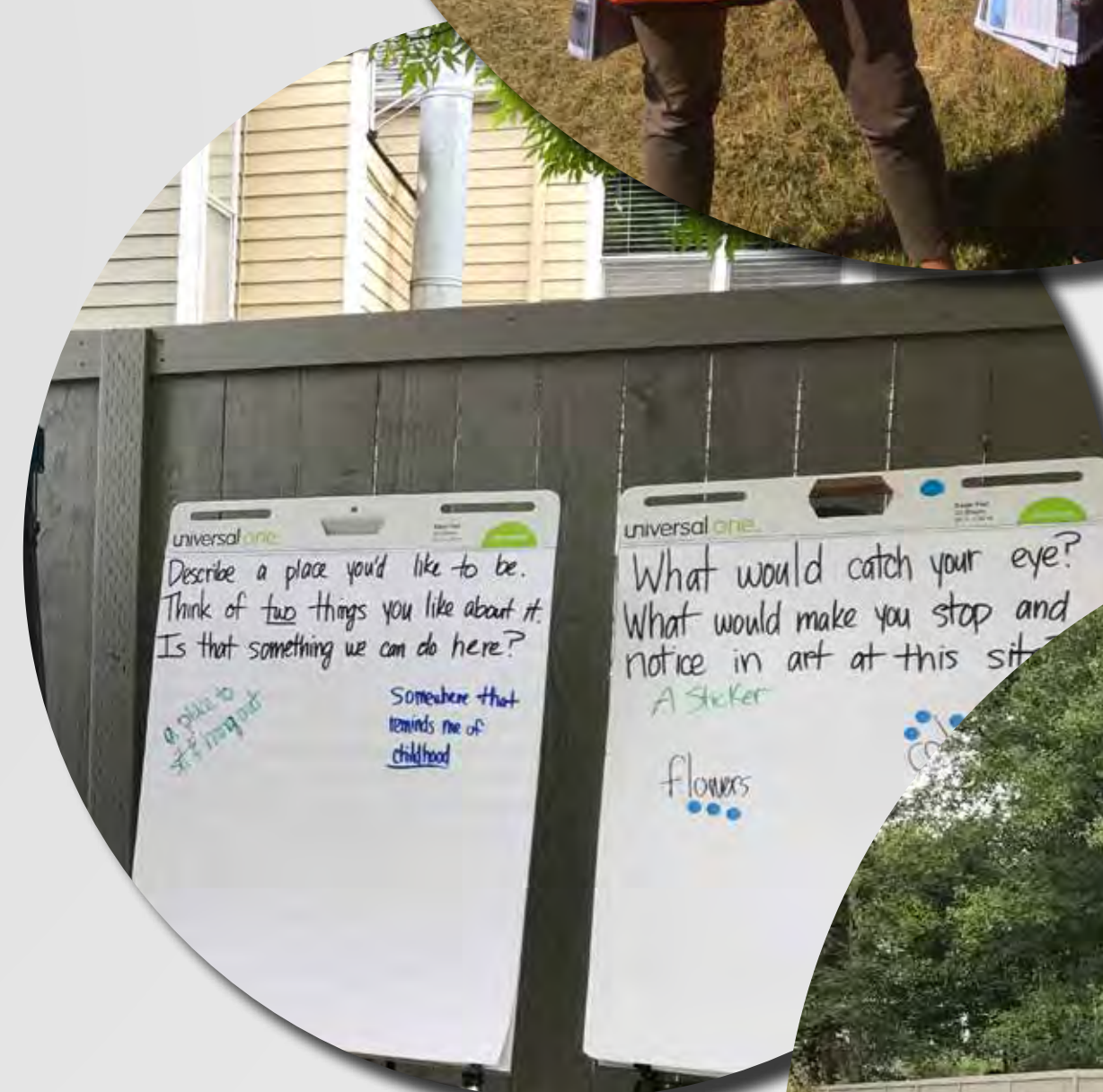
Make the path and bridge better for bikes, strollers, and wheelchairs



Slow traffic down along 24th Ave SW and SW Kenyon St



Remove the parking at the street end



City of Seattle

The Levy to



KING COUNTY
FLOOD CONTROL
DISTRICT

APRIL 2020

60% DESIGN PHASE

WHAT TO EXPECT

How a typical NDS planting installation **changes over time**



BEFORE



NEWLY PLANTED

~1 year



GROWING

~5 years



MATURE



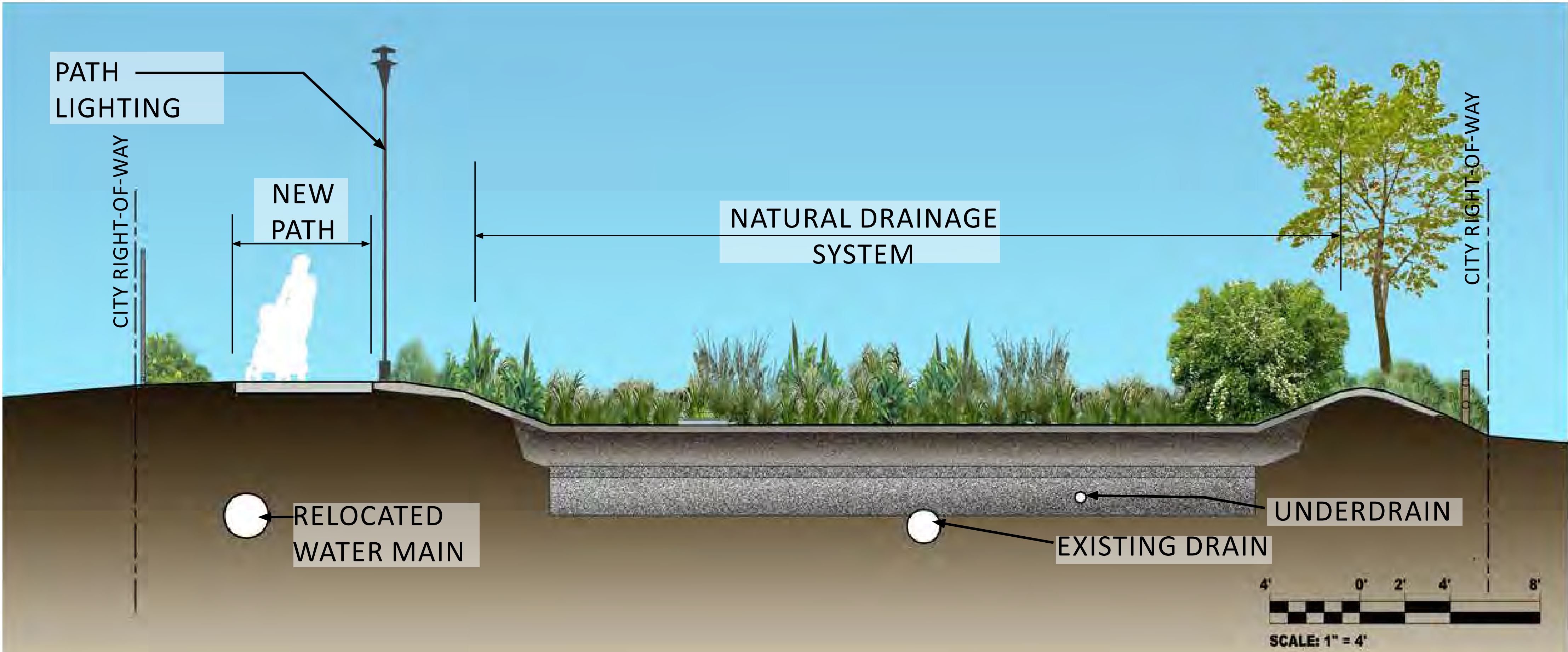
City of Seattle



APRIL 2020
60% DESIGN PHASE

LONGFELLOW CREEK PATH

Potential NDS and Pathway Improvements SW Kenyon St and 24th Ave SW



KEY

- | | | | | |
|-------------------------------|---------------------------------|---------------------|--------------------------------|----------|
| NEW SIDEWALK, IMPROVED PATH | BOARDWALK | PEDESTRIAN LIGHTING | NEW SHRUB PLANTING AREA | NEW TREE |
| NATURAL DRAINAGE SYSTEM (NDS) | PLANTING STRIP/LAWN RESTORATION | EXISTING SIDEWALK | NEW WOODEN POST AND RAIL FENCE | |

LONGFELLOW CREEK PATH

VIEW LOOKING WEST



VIEW LOOKING EAST



City of Seattle



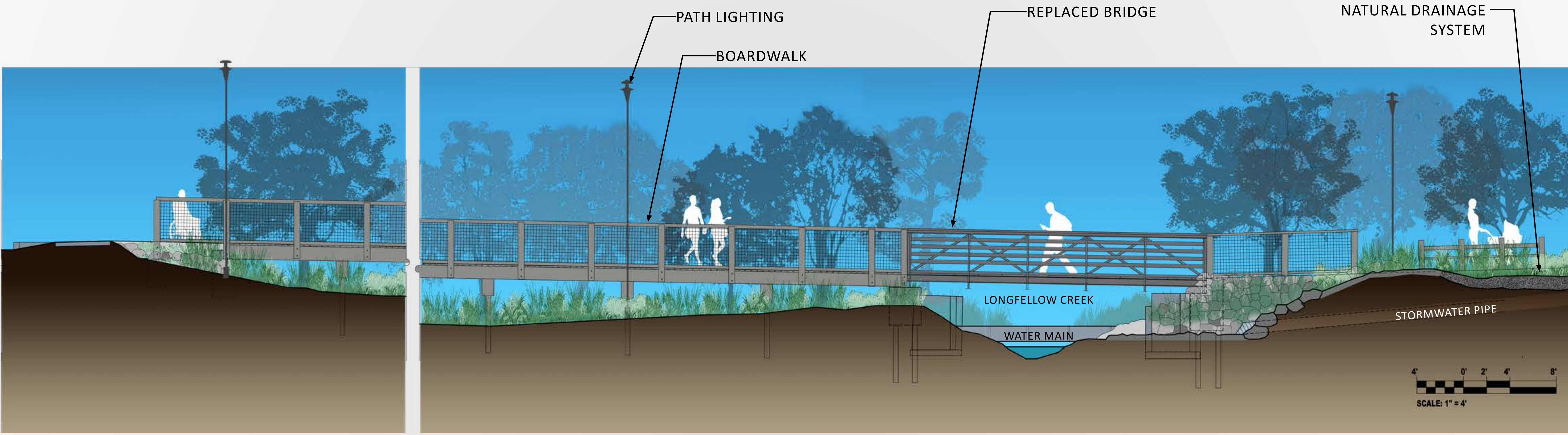
KING COUNTY
FLOOD CONTROL
DISTRICT

APRIL 2020
60% DESIGN PHASE

BOARDWALK DESIGN

for East side of 24th Ave SW & SW Kenyon St

SPU and SDOT are considering safety and environmental impacts when designing the boardwalk on the east side of the 24th & Kenyon site.



1% FOR THE ARTS

History of the SPU NDS 1% for the Arts Program

2017

1% for the Arts was selected for the SPU NDS project

2018

Portland artist Brian Borrello selected to design the installation at 24th Ave SW and SW Kenyon St

2019

April 20
LibraryLab Earth Day Delridge

2019

July 16
30% Design Drop-in Session Community Feedback

2019

September 25
Art Pop-up Event

2019-2020

Engaged Chief Sealth art classes and gathered input

Community Space

Many community members would like the site to be a place they can spend time together.

Cleanliness + Maintenance

The community would like to see the site clear of bramble and mud as well as have litter and graffiti removed.

Safety

Safety is a priority for community members passing through the site.

Connecting

with surrounding habitat

Community members would like the site to connect with the creek.



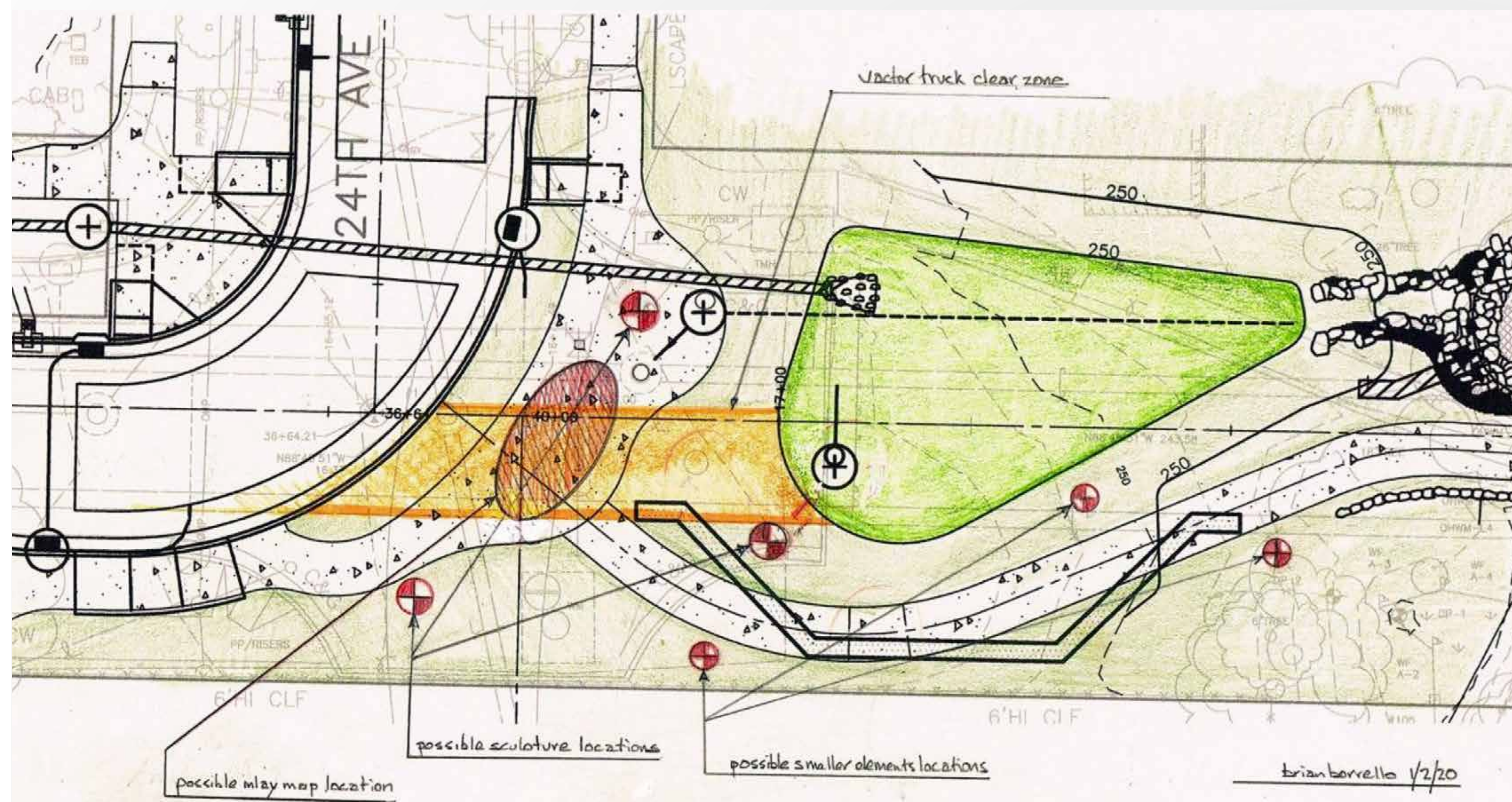
City of Seattle



APRIL 2020
60% DESIGN PHASE

ART CONCEPTS

for 24th Ave SW & SW Kenyon St



Site plan for artwork placement

The artist's goals are to make this place interesting for the community to visit and for the art to offer something unexpected, thought-provoking, and perhaps a little magical.

This site is where life forces are nourished by the creek, where neighbors can connect with each other while they pass through, and where community can experience the natural world and its often unseen processes.

