



IMPROVING OUR COMMUNITIES with Natural Drainage Systems (NDS) and Pedestrian Improvements

What are Natural Drainage Systems?

When it rains in the Delridge and Westwood neighborhoods, pollution from our streets runs into Longfellow Creek untreated. This is not healthy for the creek or for people. **The good news is: there is something we can do.**

Natural Drainage Systems consist of shallow depressions built in the roadway shoulder (the space between the street edge and the property line) and are filled with deep-rooted plants and spongy soils that temporarily hold and clean polluted stormwater from streets. These features capture and clean pollutants before they can reach Longfellow Creek.



Seattle Public Utilities (SPU) is planning to build natural drainage systems in your neighborhood in 2021. We are partnering with Seattle Department of Transportation (SDOT), Office of Arts & Culture 1% for the arts, and King County Flood Control District.



Community benefits

Natural Drainage Systems offer multiple benefits to local neighborhoods and ecosystems, including:

- Increased landscaping
- Lower risk of flooding
- Creation of habitat along our streets
- Healthier creek ecosystems
- Traffic calming
- More street trees
- Pedestrian improvements



LONGFELLOW CREEK

Watershed Boundary



Seattle
Public
Utilities



PUGET SOUND/
SALISH SEA

LONGFELLOW CREEK
WATERSHED BOUNDARY

LEGEND

- WATERSHED AREA
FLOWING INTO
LONGFELLOW CREEK
- LONGFELLOW CREEK
- LONGFELLOW CREEK
(PIPED)
- SYLVAN WAY NDS SITE
- KENYON NDS SITE
- 24TH NDS SITE

WEST SEATTLE BRIDGE

SW GENESEE ST

SW BRANDON ST

SW HOLDEN ST

SW KENYON ST

SW THISTLE ST

SW CLOVERDALE ST

SW TRENTON ST

SW HENDERSON ST

SW BARTON ST

SW MORGAN ST

SW ROXBURY ST

SW HOLDEN ST

SW KENYON ST

SW THISTLE ST

SW CLOVERDALE ST

SW TRENTON ST

SW HENDERSON ST

SW BARTON ST

SW ROXBURY ST

SW HOLDEN ST

SW KENYON ST

SW THISTLE ST

SW CLOVERDALE ST

SW TRENTON ST

SW HENDERSON ST

SW BARTON ST

SW ROXBURY ST

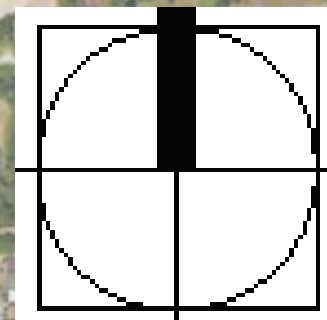
ROXHILL
PARK

LONGFELLOW CREEK

PROJECT AREA

DUGANISH RIVER

N



City of Seattle

The Levy to
MOVE SEATTLE



KING COUNTY
FLOOD CONTROL
DISTRICT

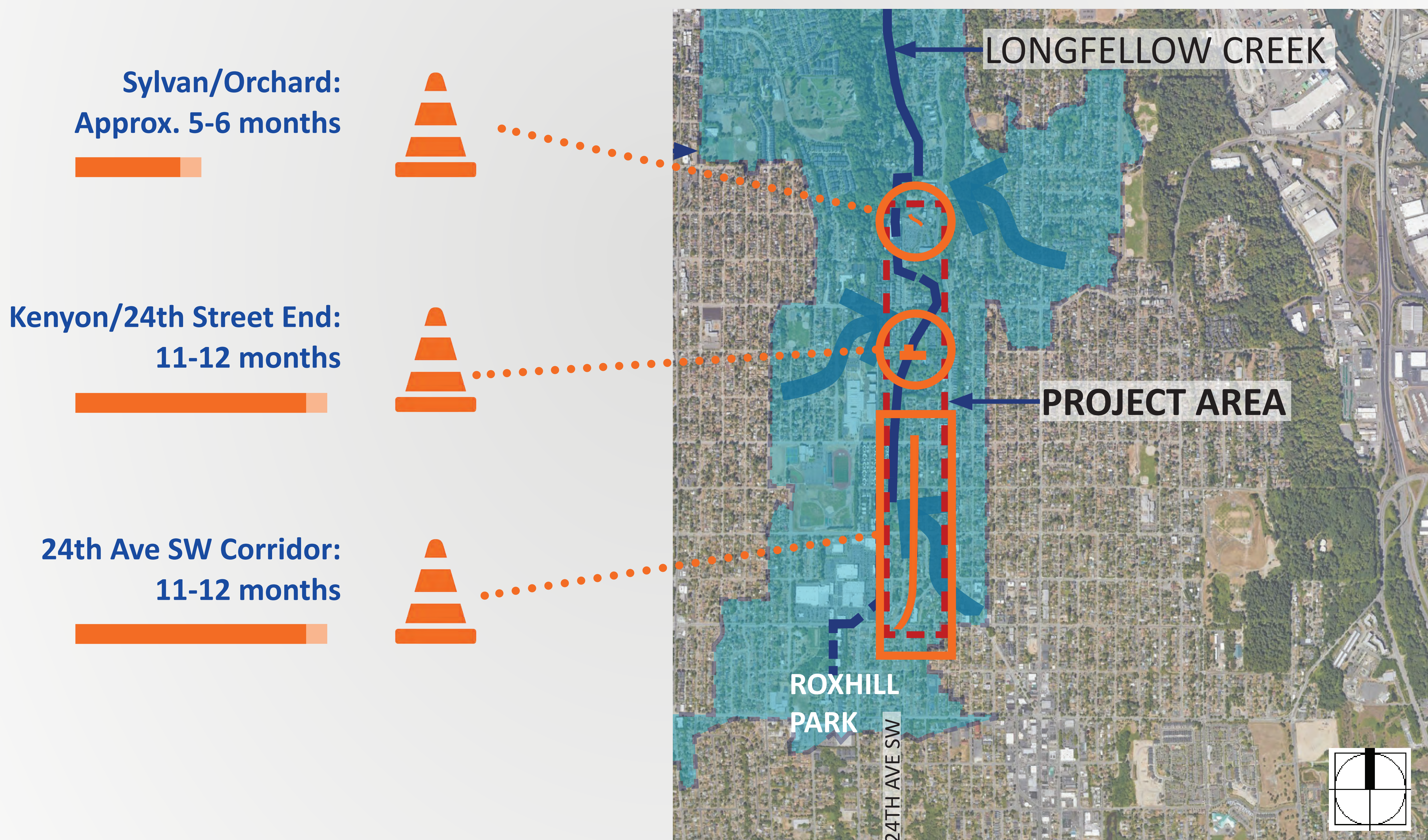
DECEMBER 2020
LATE DESIGN PHASE

WHERE WE ARE NOW

...and where we're going

We are working to finalize the design for the **Longfellow Creek NDS project**. Construction on this multisite project is scheduled to begin in mid-2021 and go through 2022.

See below for estimated construction timeline for each project site.



In general, when work is occurring near your home you can expect construction noise, dirt/dust, and vibrations as well as increased construction traffic and materials/equipment staged in the right-of-way. We will share more information about anticipated start date for work on this site, construction schedule, and anticipated construction impacts once we have a contractor onboard.

WHAT TO EXPECT

How a typical NDS planting installation **changes over time**



BEFORE



NEWLY PLANTED

~1 year



GROWING

~5 years



MATURE



City of Seattle

The Levy to
MOVE SEATTLE


 **KING COUNTY
FLOOD CONTROL
DISTRICT**

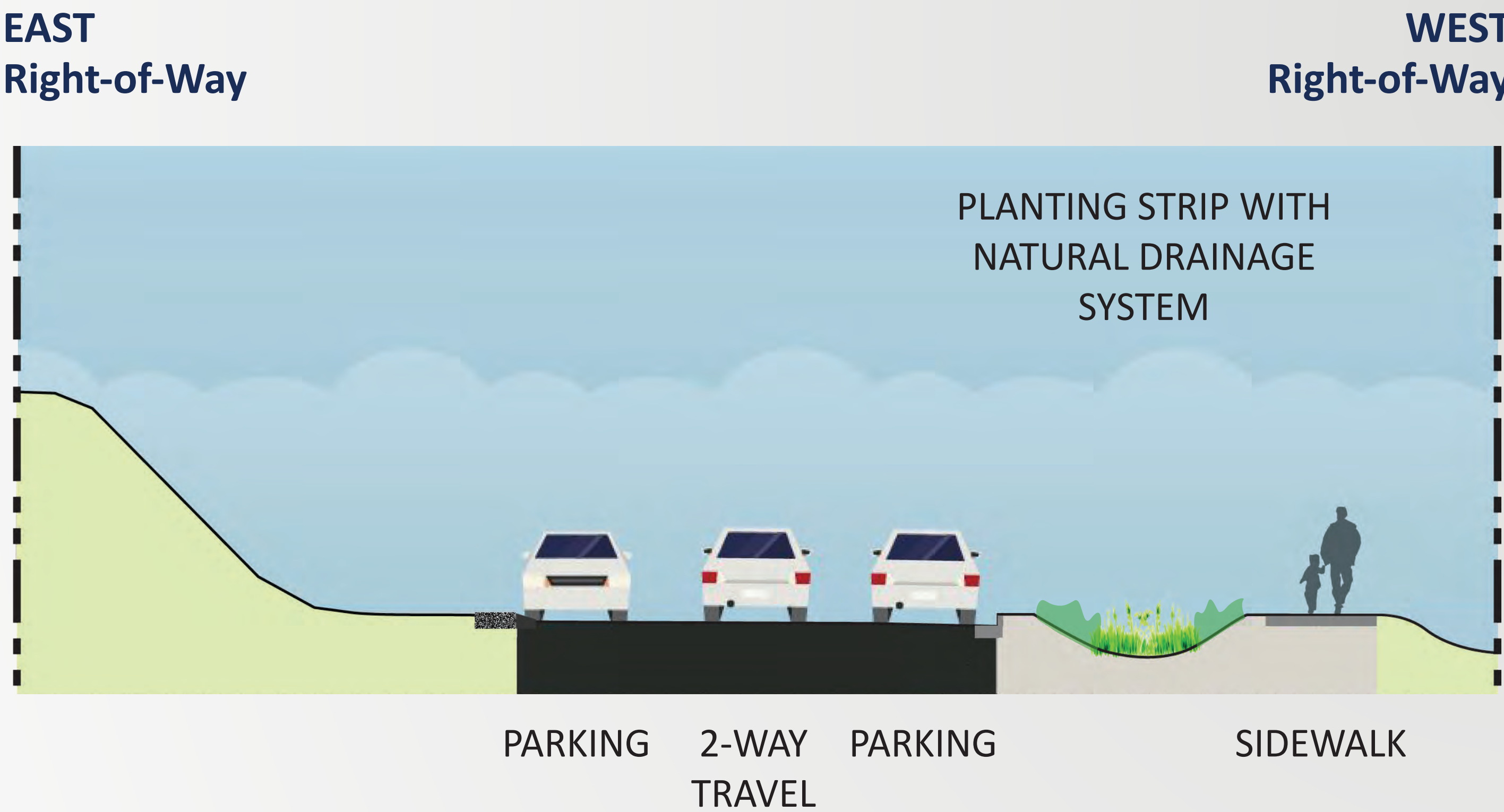
DECEMBER 2020
LATE DESIGN PHASE

Typical **existing** street conditions

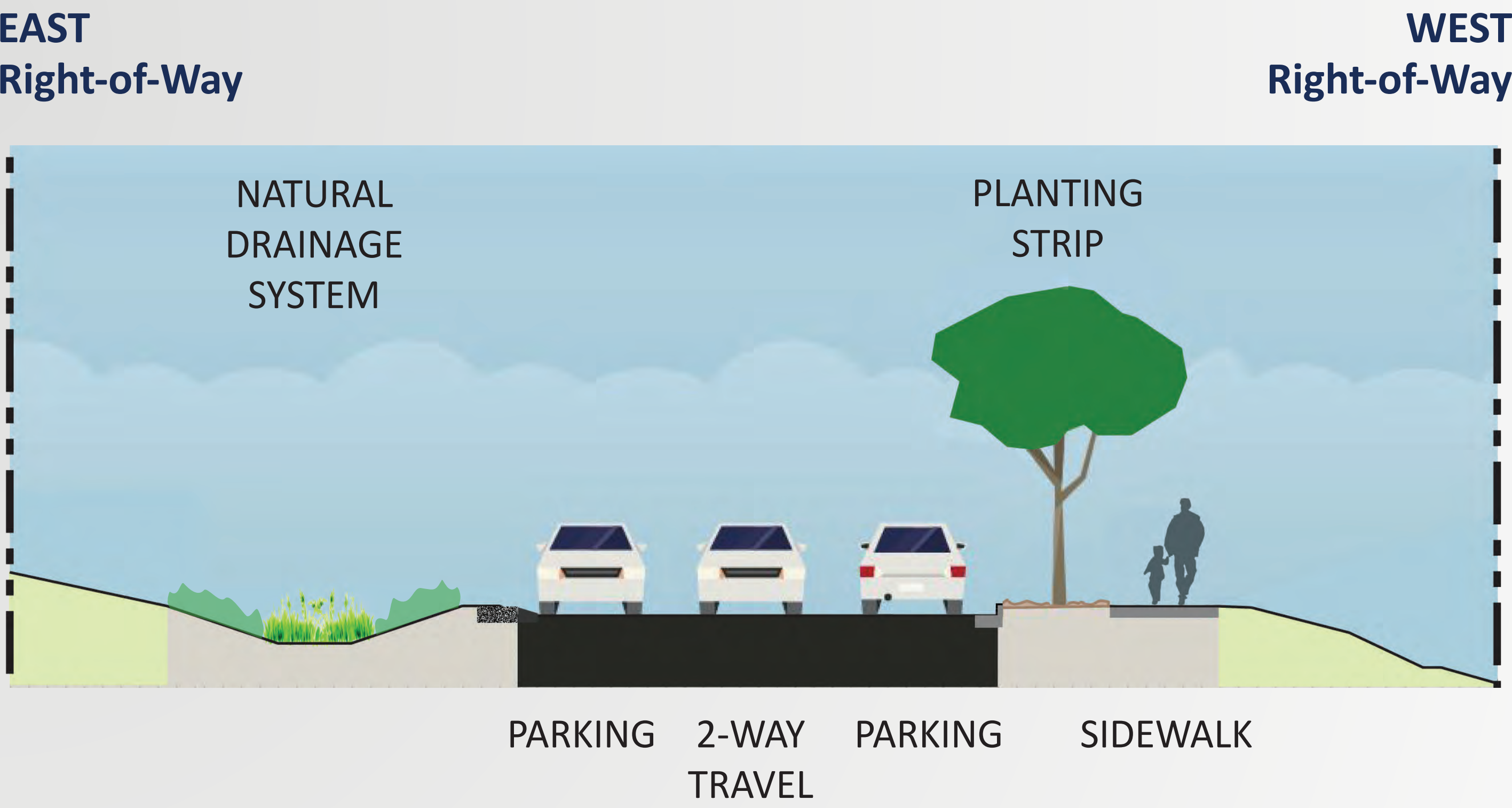


Typical **proposed** street conditions

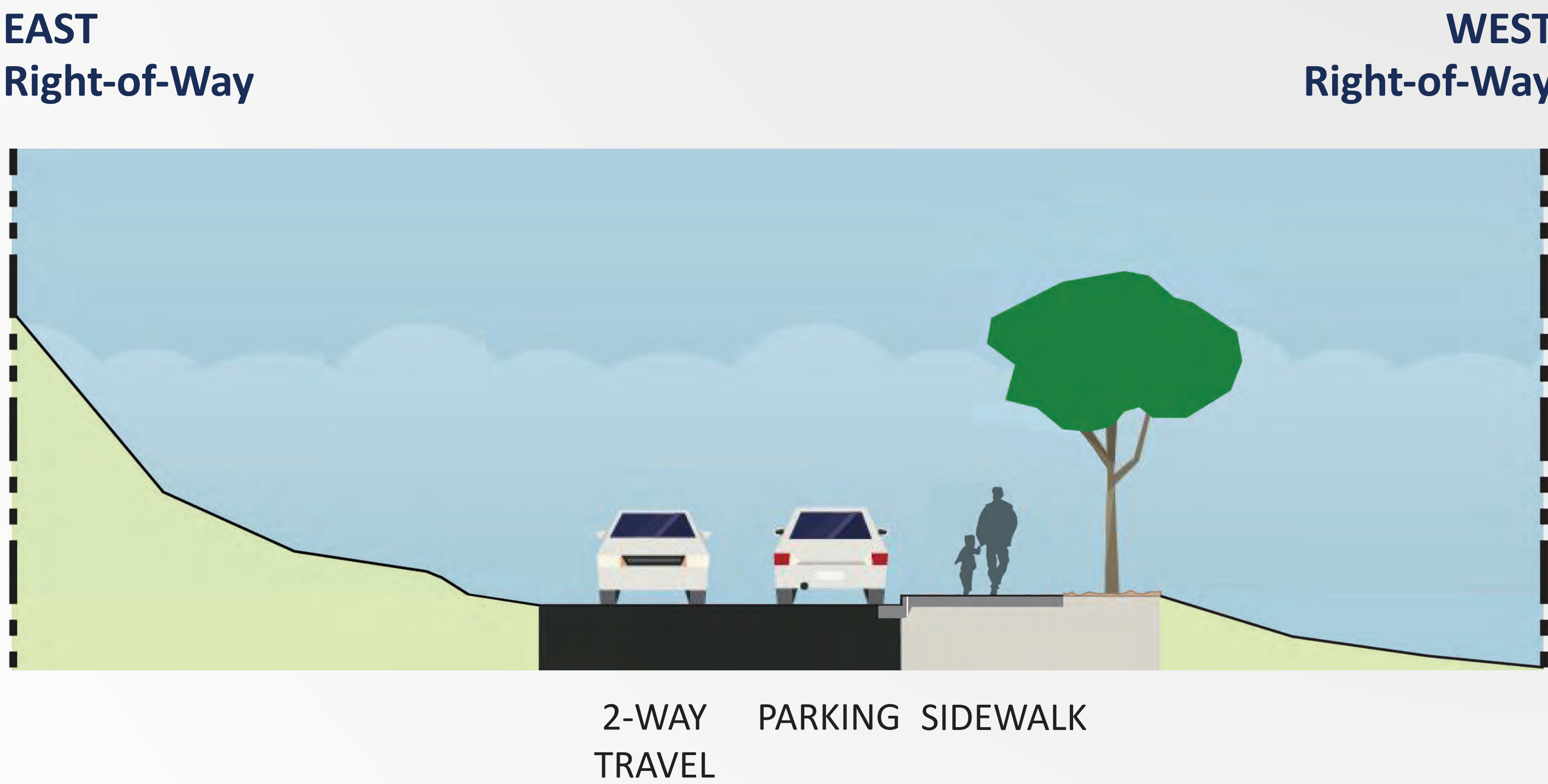
*Street conditions vary along 24th Ave SW Corridor



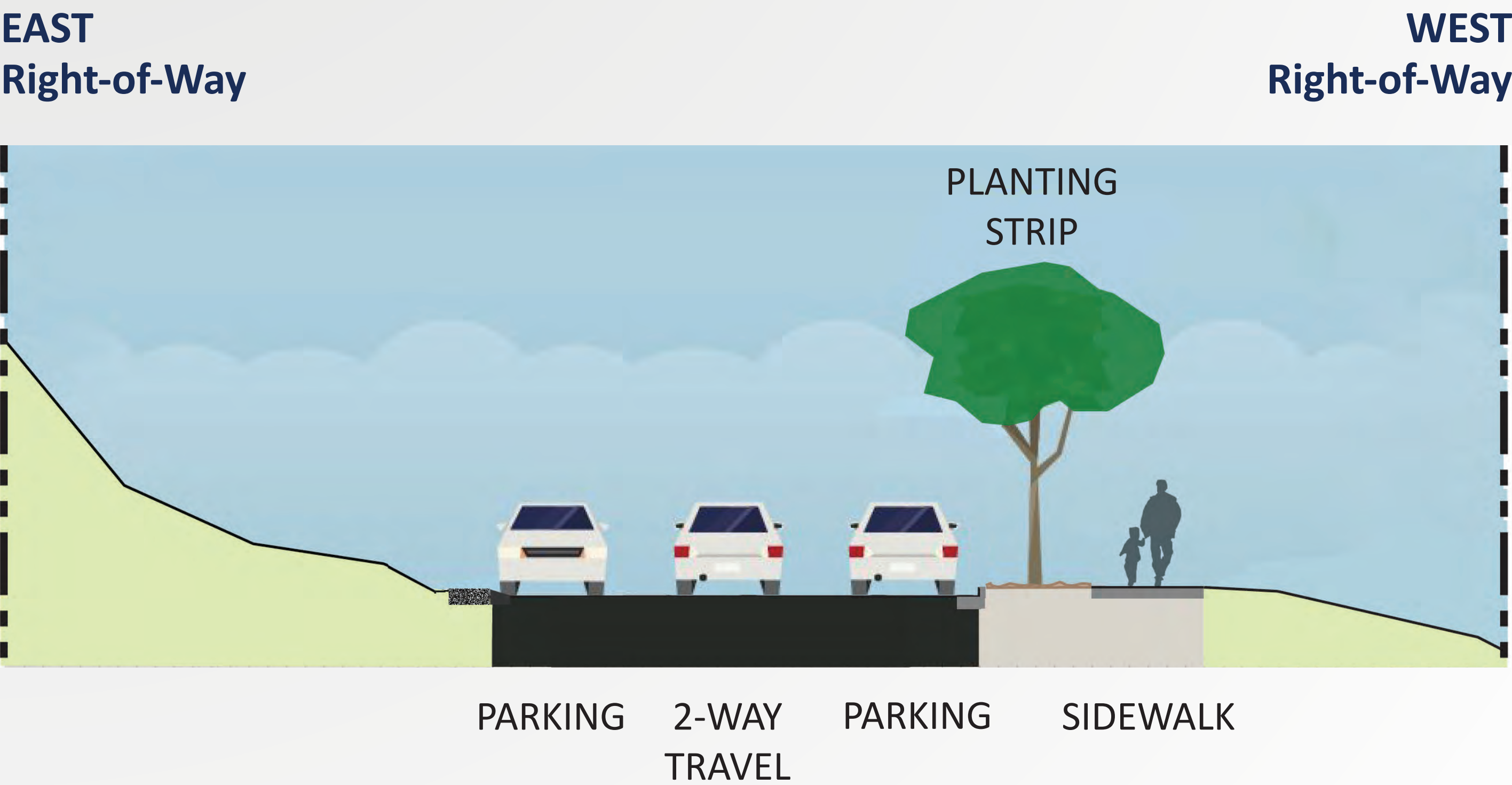
**New Sidewalk + Natural Drainage System
between SW Cloverdale St and SW Barton Pl**



**New Sidewalk + Planting Strip
between SW Cloverdale St and SW Barton Pl**



**Natural Drainage System Opposite New Sidewalk
between SW Cloverdale St and SW Barton Pl**



New Sidewalk between SW Thistle St and SW Cloverdale St*

*NOTE: SW Thistle St / SW Cloverdale St sidewalk is subject to funding availability.
See plan for detailed layouts.

24th AVE SW CORRIDOR

What's in store for the 24th Ave SW Corridor?

24th Ave SW between SW Cloverdale St and SW Trenton St



Sidewalk view looking South

24th Ave SW between SW Barton St and SW Henderson St



Street view looking North, early summer



City of Seattle



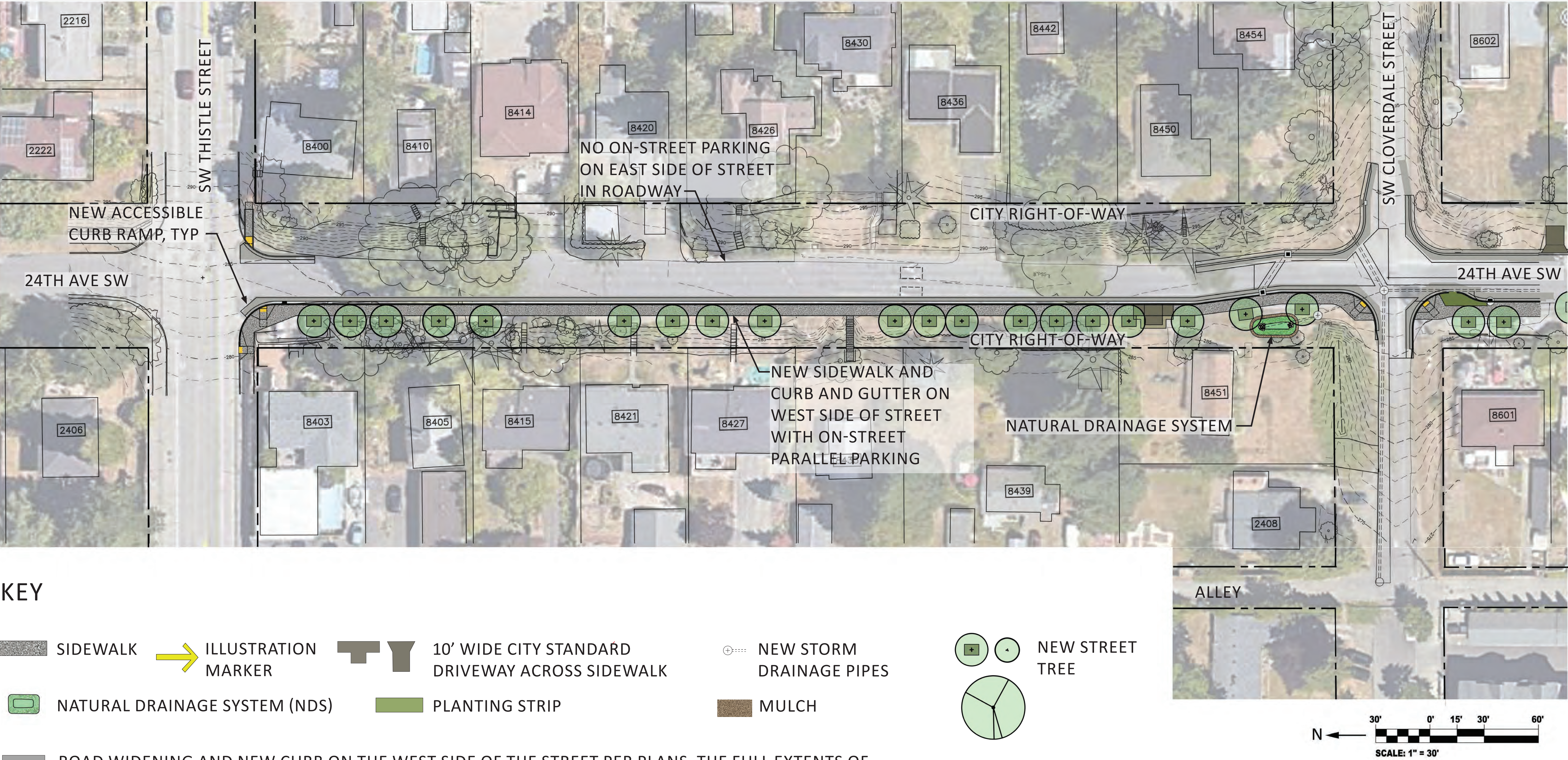
DECEMBER 2020
LATE DESIGN PHASE

24th AVE SW CORRIDOR



24th Ave SW: Thistle to Cloverdale

Potential Natural Drainage Systems and Sidewalk Improvements



KEY

SIDEWALK ILLUSTRATION MARKER 10' WIDE CITY STANDARD DRIVEWAY ACROSS SIDEWALK NEW STORM DRAINAGE PIPES MULCH NEW STREET TREE

NATURAL DRAINAGE SYSTEM (NDS) PLANTING STRIP

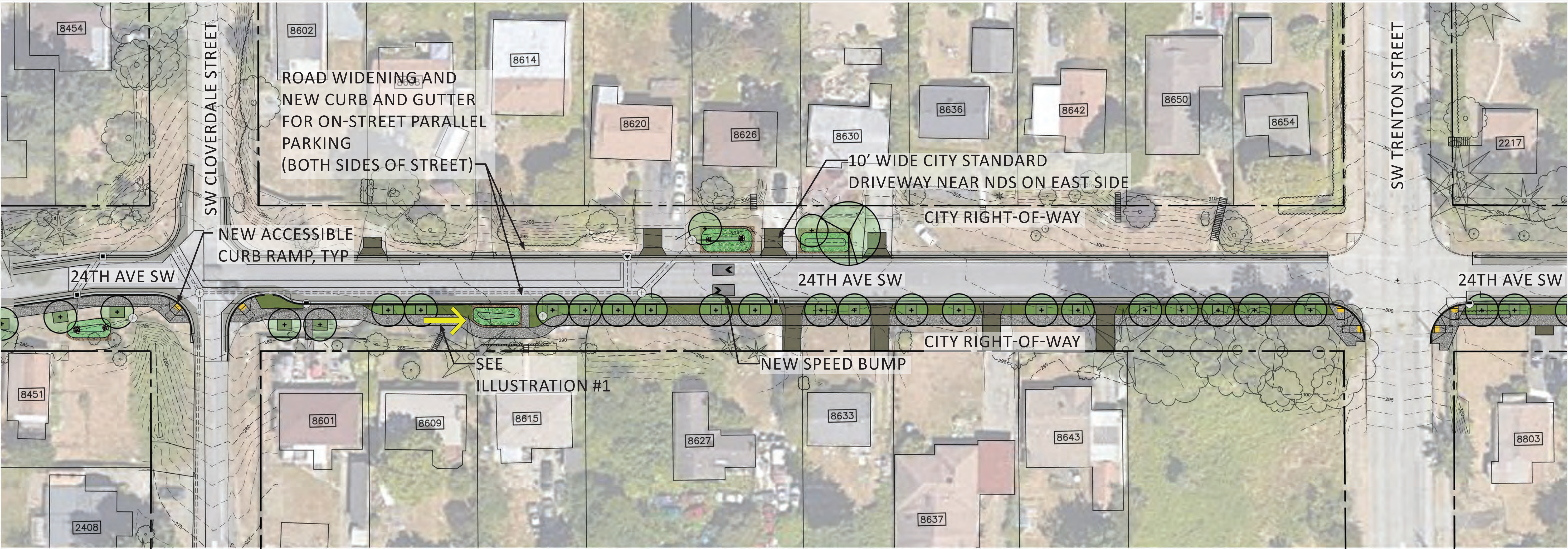
ROAD WIDENING AND NEW CURB ON THE WEST SIDE OF THE STREET PER PLANS. THE FULL EXTENTS OF EXISTING PAVEMENT REPAIR AND RESTORATION ARE NOT SHOWN FOR CLARITY.

24th AVE SW CORRIDOR



24th Ave SW: Cloverdale to Trenton

Potential Natural Drainage Systems and Sidewalk Improvements



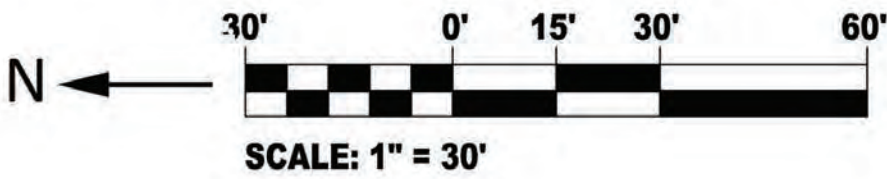
KEY

- SIDEWALK
- ILLUSTRATION MARKER
- NATURAL DRAINAGE SYSTEM (NDS)
- PLANTING STRIP
- ROAD WIDENING AND NEW CURB ON THE EAST AND WEST SIDE OF THE STREET PER PLANS. THE FULL EXTENT OF EXISTING PAVEMENT REPAIR AND RESTORATION ARE NOT SHOWN FOR CLARITY."

- 10' WIDE CITY STANDARD DRIVEWAY ACROSS SIDEWALK
- MULCH

- NEW STORM DRAINAGE PIPES

- NEW STREET TREE

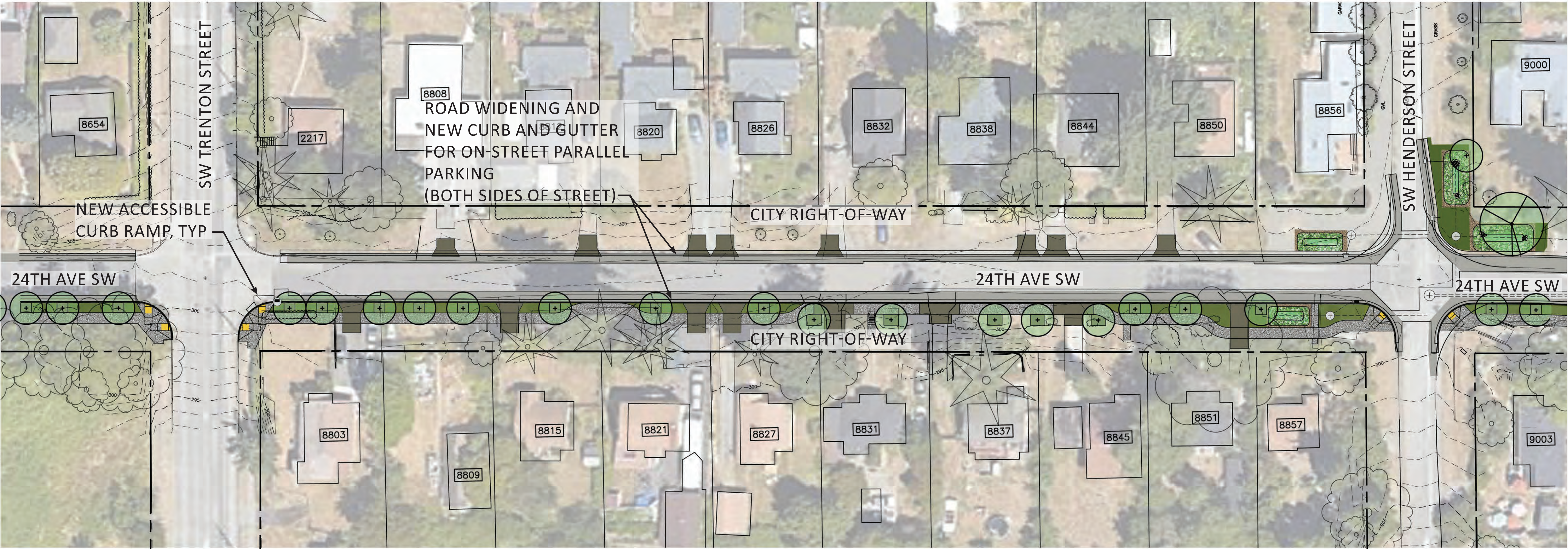


24th AVE SW CORRIDOR



24th Ave SW: Trenton to Henderson

Potential Natural Drainage Systems and Sidewalk Improvements



KEY

- SIDEWALK
- ILLUSTRATION MARKER
- 10' WIDE CITY STANDARD DRIVEWAY ACROSS SIDEWALK
- NEW STORM DRAINAGE PIPES
- NATURAL DRAINAGE SYSTEM (NDS)
- PLANTING STRIP
- MULCH
- ROAD WIDENING AND NEW CURB ON THE EAST AND WEST SIDE OF THE STREET PER PLANS. THE FULL EXTENT OF EXISTING PAVEMENT REPAIR AND RESTORATION ARE NOT SHOWN FOR CLARITY."

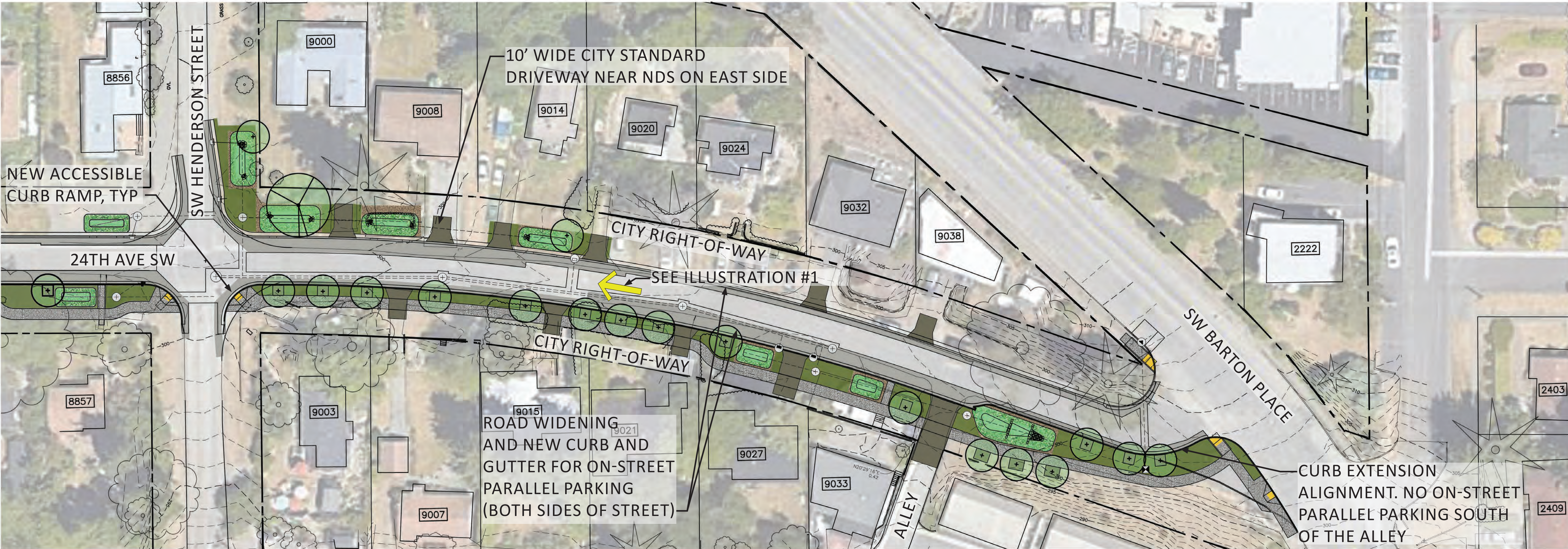


24th AVE SW CORRIDOR



24th Ave SW: Henderson to Barton

Potential Natural Drainage Systems and Sidewalk Improvements



KEY

- SIDEWALK
- ILLUSTRATION MARKER
- 10' WIDE CITY STANDARD DRIVEWAY ACROSS SIDEWALK
- NEW STORM DRAINAGE PIPES
- NATURAL DRAINAGE SYSTEM (NDS)
- PLANTING STRIP
- MULCH
- ROAD WIDENING AND NEW CURB ON THE EAST AND WEST SIDE OF THE STREET PER PLANS. THE FULL EXTENT OF EXISTING PAVEMENT REPAIR AND RESTORATION ARE NOT SHOWN FOR CLARITY."

