

# **South Recycling & Disposal Station (SRDS) Redevelopment Stakeholder Group Meeting #4**

**October 17, 2016**

Seattle  
 Public  
Utilities

# Meeting Agenda

- Welcome
- Recap of Stakeholder Meeting #3
- Project Updates
- Decant Facility
- Tree Mitigation
- Minimizing Operational Impacts
- Next Steps

# Meeting Plan

Priority Topics	Meeting #2 (March)	Meeting #3 (June)	Meeting #4 (Sept/Oct)
Recycle & Reuse Facility	✓		
Pedestrian Path		✓	
Public Art	Artist led process		
Landscaping & Trees			✓
Operational impacts			✓
SEPA			✓
Decant Facility			✓

# Recap of Stakeholder Meeting #3




- Public Art
- Pedestrian Path
- Decant Facility
- Landscaping & Trees
- Operational Impacts

# Community Outreach

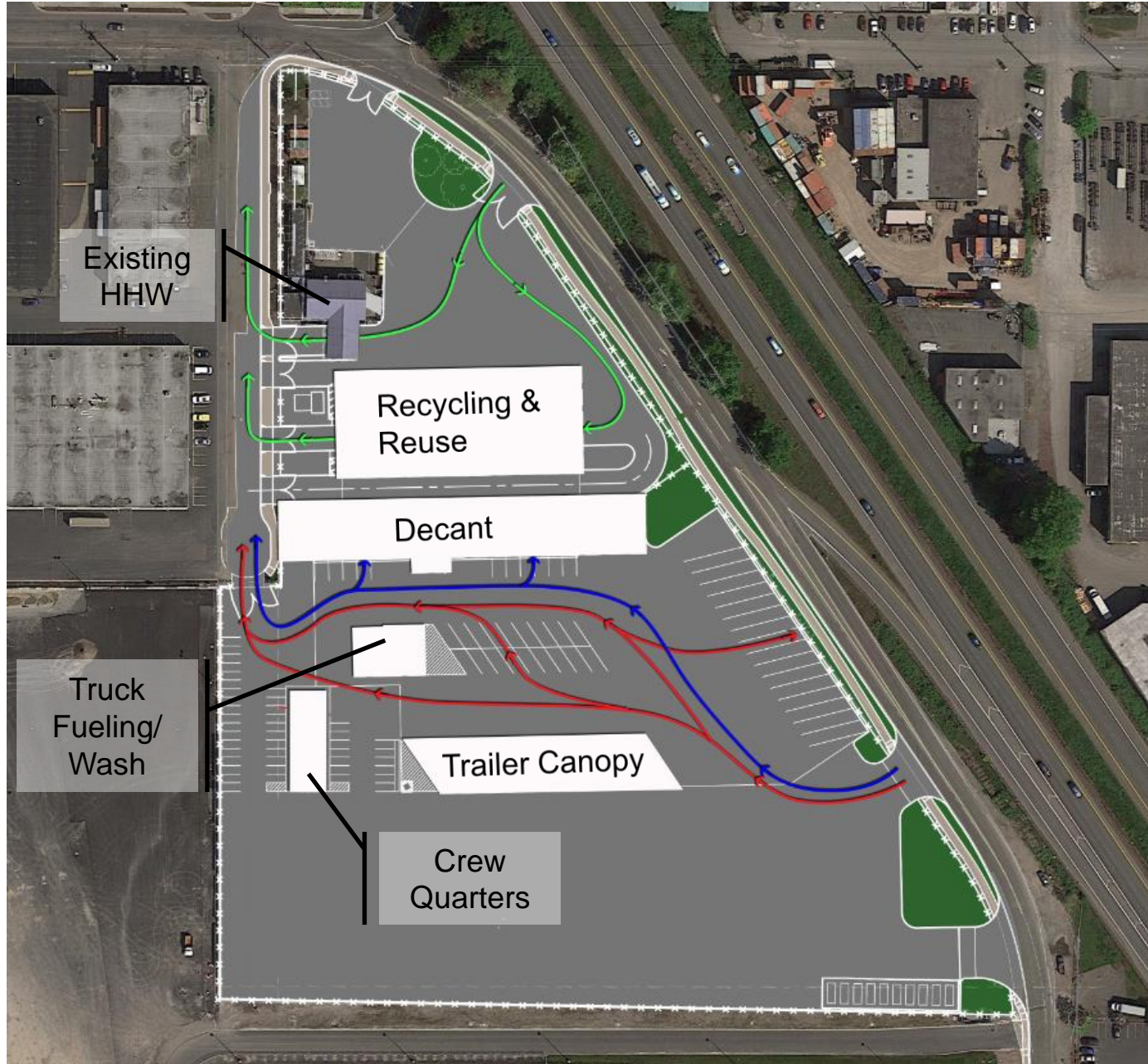
- Concord Elementary School Carnival (pedestrian path input)
- Focused Tree Discussion with DRCC/Paulina Lopez and JHA/Linn Gould
- Community Drop-in Session
- Business Drop-in Session
  - Letter
  - Door to door
- <sup>5</sup> South Park Project Email Update

# Site Plan



-  Public Customers
-  Solid Waste Trucks
-  Decant Trucks

DRAFT



Existing  
HHW

Recycling &  
Reuse

Decant

Truck  
Fueling/  
Wash

Trailer Canopy

Crew  
Quarters

# Project Schedule

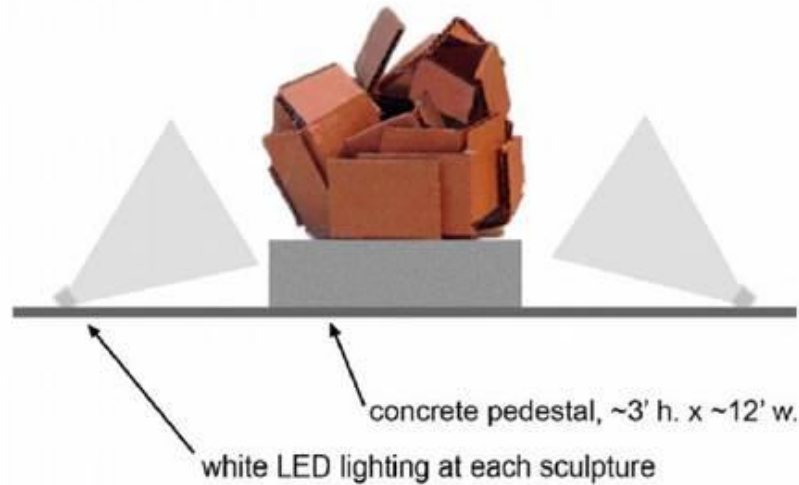
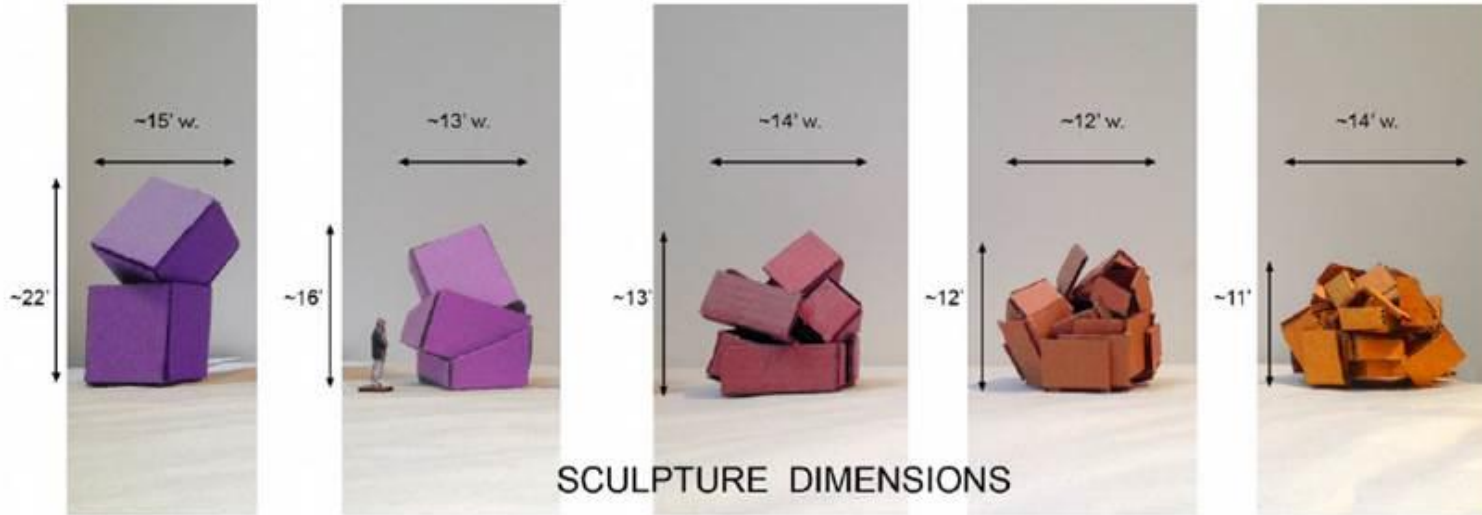
- 2016: Design; value engineering; permitting
- 2017: Anticipated complete design; bidding; start construction
- 2019: Anticipated complete construction; open facility

# SEPA – State Environmental Policy Act

- Public Comment Period – delayed, anticipated in November - December



# Public Art Concept

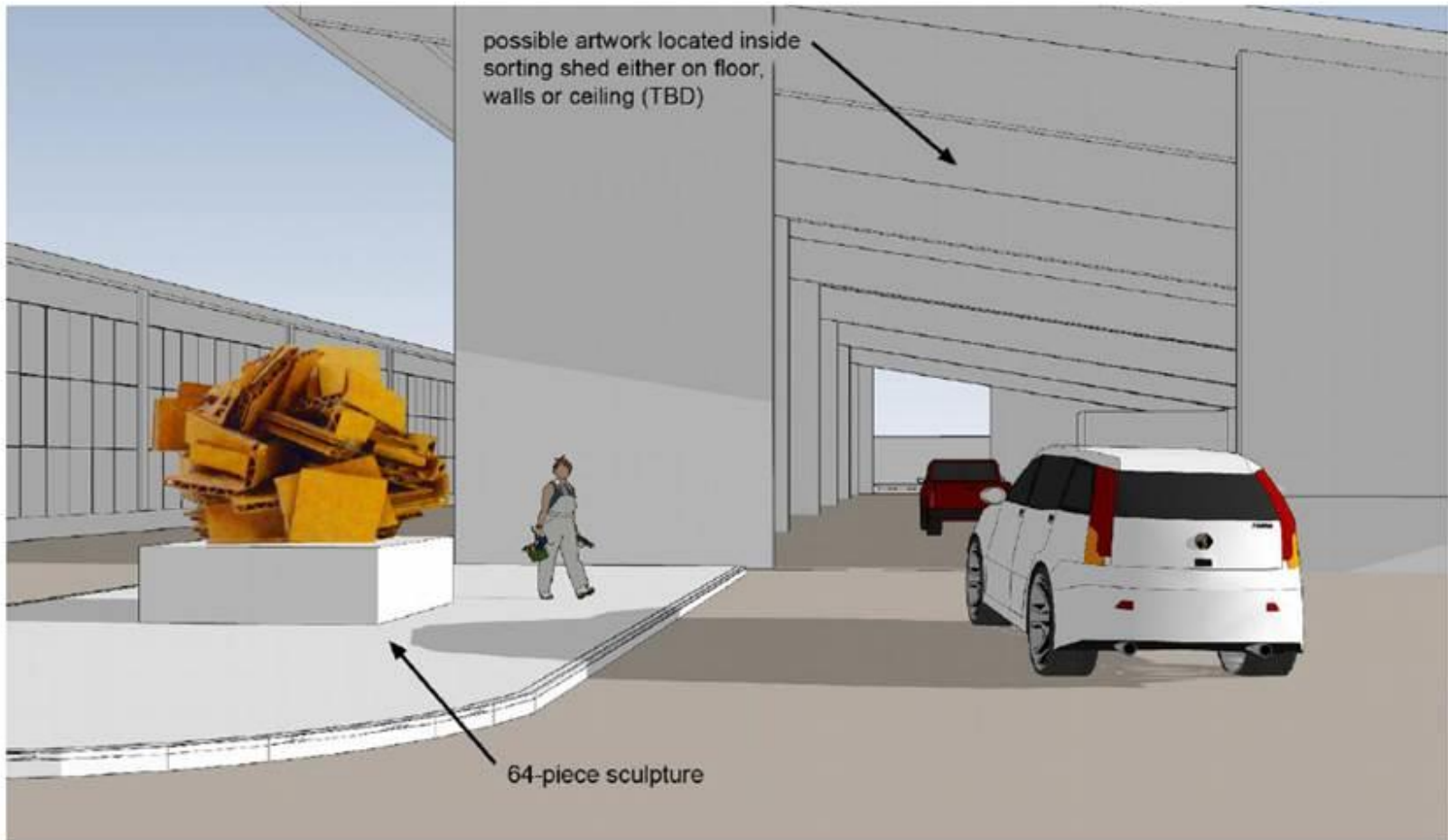


# Public Art Concept



4-piece & 8-piece sculptures

# Public Art Concept



*Questions? Please contact Ruri Yampolsky, Office of Arts & Culture, 206-684-7309*

# Decant Facility

# Example: Pierce County Facility



# Example: City of Olympia



# Proposed Odor Control Options

Option	Description	Effectiveness
<b>A – Operations Only</b>	<ul style="list-style-type: none"> <li>• Canopy with north wall</li> <li>• Move material regularly to increase drying</li> <li>• Manually apply neutralizing agent when needed</li> </ul>	<ul style="list-style-type: none"> <li>• Noticeable short term impacts at Recycling Building</li> <li>• Detectable odors could occur at property boundary and extend beyond boundary for &lt; 10 hrs/year</li> </ul>
<b>B – High Velocity Dilution Fan</b>	<ul style="list-style-type: none"> <li>• Enclose sewer grit portion of building, collect air and discharge using high velocity fan</li> </ul>	<ul style="list-style-type: none"> <li>• Noticeable short term impacts at Recycling Building</li> <li>• Provides improvements over Option A on west end of Recycling Building. No change in middle or east side</li> </ul>
<b>C – Air Treatment</b>	<ul style="list-style-type: none"> <li>• Enclose sewer grit portion of building, collect air and provide treatment</li> <li>• Multiple treatment options being considered</li> </ul>	<ul style="list-style-type: none"> <li>• Nominal improvement over Option B if collected air is treated</li> </ul>

# What will it look like?

DRAFT

View from  
pedestrian  
path



*(without fence  
for clarity)*





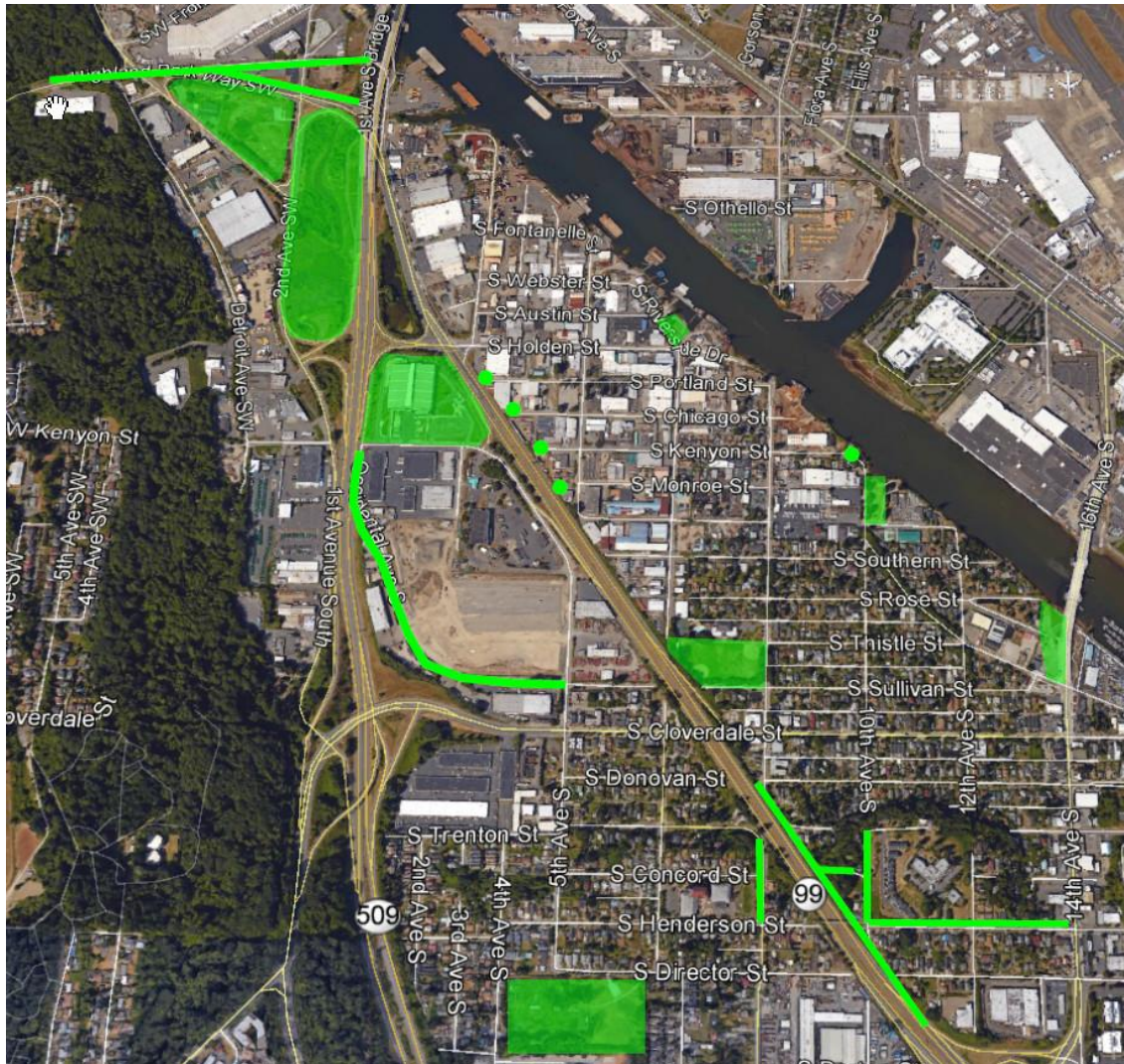
# Tree Mitigation

# Progress Since Stakeholder Meeting #3

1. Refined site design
2. Investigated alternative locations and potential alternatives for tree replacement
3. Met with JHA/Linn Gould and DRCC/Paulina Lopez on focused tree meeting discussion
4. Identified tree mitigation plan



# South Park Locations Investigated for Tree Planting

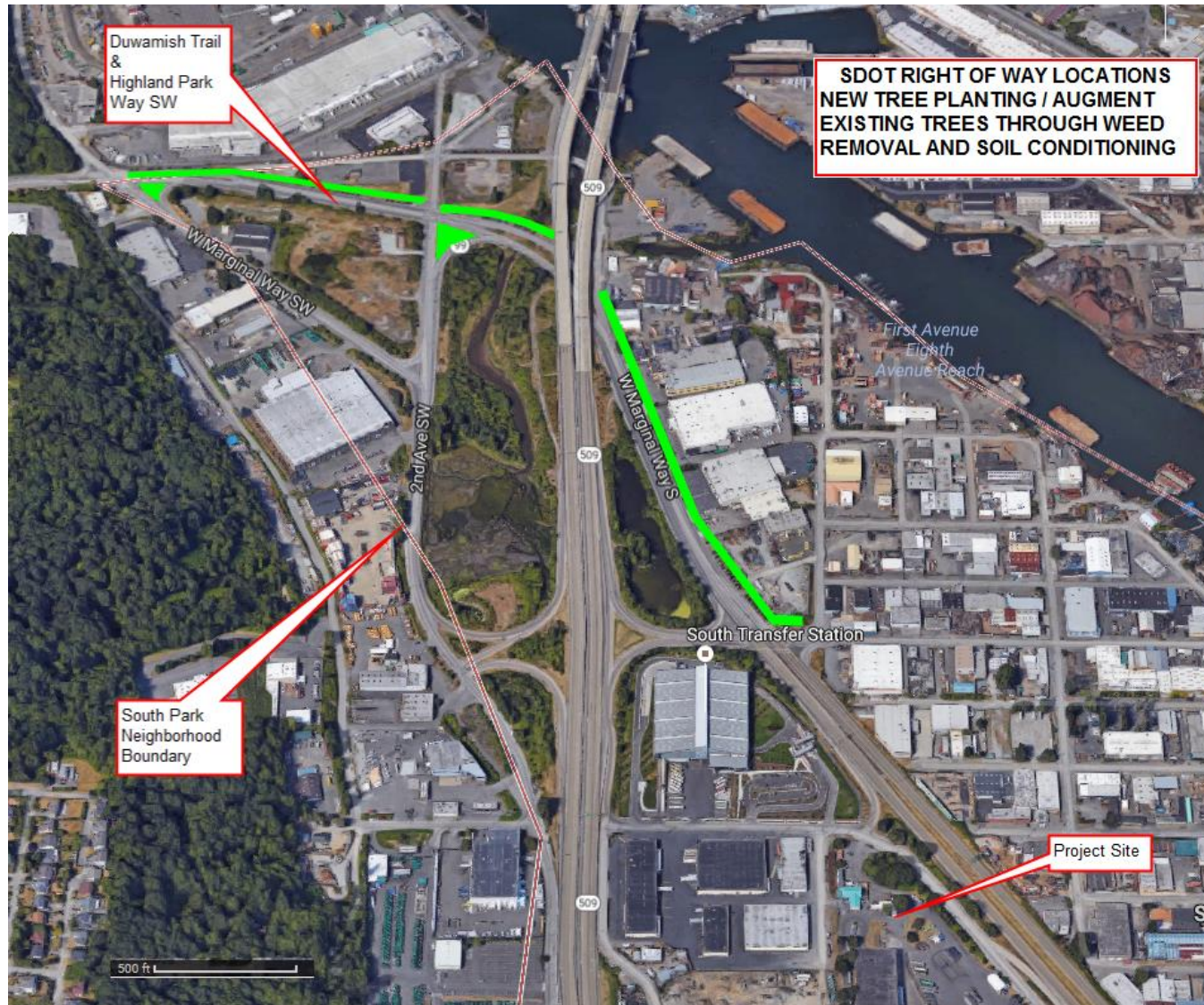


- Public property replacement preferred
- Area where development is not scheduled to occur
- Area where there is least potential for tree damage or mortality
- Area accessible for watering and maintenance

# Other Investigation

1. Feasibility of planting trees around Happy/Scary Trail
2. Feasibility of green screens on site
3. Soil rehabilitation for existing trees

# Mitigation Approach



- Use full funding for mitigation to plant 32 new trees along Duwamish Trail, Highland Park Way SW, and W Marginal Way S, and save 89 existing trees along corridor
- Creative approach mixing new planting and rescuing existing struggling trees allows mitigation to remain in South Park

# Trees: Mitigation Steps

- ✓ 1) Update design to determine extent of impacts
- ✓ 2) Determine funding level for mitigation
- ✓ 3) Possible approaches
- ✓ 4) Proposed mitigation approach
- 5) Review design and potential mitigation approach with permitting agencies
- 6) Obtain permits and approvals
- 7) Implement plan

# Minimize Operational Impacts

# Minimize Operational Impacts

## Meeting #3:

- Associated air pollution/maintain air quality
- Odor
- Noise
- Truck traffic
- Truck routes
- Illegal dumping
- Scrap metal vendors



# Potential Air Quality Impacts

## **Construction Phase:**

- Construction activities (e.g. earthwork, paving, landscaping) would result in emissions of particulates and dust

## **Mitigation Options:**

- Cover or spray truckloads of soil to prevent wind-blown dust
- Clean vehicle tires and undercarriages before leaving the site and sweep streets adjacent to site
- Maintain machinery in good working order and operate equipment to minimize exhaust smoke

# Potential Air Quality Impacts

## **Operations Phase:**

- Sources of air quality impacts include solid waste transfer trailers and tractors, employee vehicles, standby generator, and vector trucks
- Decant facility may release occasional odors

## **Mitigation Options:**

- Actively manage decant facility odors with operational practices
- Continue to store materials in HHW facility in closed containers to prevent evaporation of oils, solvents, etc.
- Investigate/assess odors when notified of issues
- Limit vehicle idling and queuing

# Potential Noise Impacts

## Construction Phase:

- Construction noise is regulated and will be monitored
- Construction equipment would be muffled in accordance with applicable noise regulations
- Construction may typically occur 7am – 4pm, but may extend 7am - 9pm weekdays and 9am - 9pm weekends
- Adjacent properties will be notified about construction noise impacts

# Potential Noise Impacts

## **Operations Phase:**

- Sources include truck traffic, noise from unloading recyclables, and onsite machinery (i.e. standby generator)
- Recycling and Reuse facility will have the same hours as the Transfer Station's current hours.

## **SPU will:**

- Comply with City limits for industrially-zoned properties
- Maintain heavy equipment and mufflers in good condition
- Install equipment with the proper noise reduction measures to keep noise levels within regulatory limits

# Truck Traffic and Truck Routes

- **Access to Hwy 99**
- **Routes not through neighborhood**

## Decant Facility

- Near-term up to 16 truck visits per day

## Recycle and Reuse Facility

- Future projections of 100-140 customers/day

## HHW (existing)

- Average of 65 customers/day (3 days/wk)

# Illegal Dumping

- Improvements along property ROW may discourage some of this behavior
- Added illegal dumping patrols when STS was built

# Scrap Metal Vendors

- License is required
- Activity is not prohibited
- Concerns
- SPU will continue to monitor the area
- To file an official complaint:  
[www.dol.wa.gov/business/scrapmetal/](http://www.dol.wa.gov/business/scrapmetal/)

# Next Steps

## Design

- SEPA
- Final Design & Permitting

## Stakeholder Group

- Meeting #5 ?
- Email updates