

## City of Seattle Construction & Demolition Disposal Report

Year	Month	Waste Management at Eastmont	Eastmont Self Haulers	Total Eastmont <sup>1</sup>	Rabanco at 3rd & Lander	3rd & Lander Self Haulers <sup>3</sup>	Total 3rd & Lander <sup>2</sup>	Lander Direct <sup>4</sup>	Total Black River	Total Argo Direct	Waste Connections	Grand Total
2018	Jan	2,055	746	2,801	3,224	N/A	3,224	27	716	283	0	7,051
2018	Feb	1,706	881	2,587	2,865	N/A	2,865	294	904	46	0	6,697
2018	Mar	2,469	775	3,244	3,431	N/A	3,431	296	959	93	0	8,024
2018	Apr	1,715	313	2,028	3,325	N/A	3,325	745	1,137	27	0	7,263
2018	May	1,741	362	2,103	3,191	N/A	3,191	85	1,182	132	0	6,693
2018	Jun	1,825	318	2,143	3,462	N/A	3,462	112	999	114	0	6,830
2018	Jul	1,443	544	1,987	1,209	N/A	1,209	137	254	0	0	3,587
2018	Aug	1,599	811	2,409	1,149	N/A	1,149	10	128	0	0	3,696
2018	Sep	1,418	810	2,228	1,025	N/A	1,025	123	207	0	0	3,583
2018	Oct	1,712	796	2,508	1,335	N/A	1,335	251	208	3	0	4,305
2018	Nov	1,513	635	2,148	1,067	N/A	1,067	695	178	0	0	4,088
2018	Dec	1,753	706	2,459	1,007	N/A	1,007	0	66	0	0	3,532
2019	Jan	1,049	576	1,626	1,219	N/A	1,219	0	133	209	0	3,186
2019	Feb	1,058	791	1,848	726	N/A	726	220	36	0	0	2,830
2019	Mar	1,054	973	2,027	947	N/A	947	799	157	395	0	4,324
2019	Apr	1,253	1,177	2,430	969	N/A	969	2,362	269	8	0	6,039
2019	May	1,392	900	2,292	914	N/A	914	1,710	175	380	0	5,470
2019	Jun	2,064	1,314	3,378	0	N/A	0	305	1,104	205	0	4,991
2019	Jul	2,291	1,060	3,350	0	N/A	0	431	771	1,885	0	6,438
<b>2019 Total</b>		<b>10,160</b>	<b>6,791</b>	<b>16,951</b>	<b>4,774</b>	<b>N/A</b>	<b>4,774</b>	<b>5,827</b>	<b>2,645</b>	<b>3,081</b>		<b>33,278</b>
2018 Total		20,949	7,696	28,645	26,289	N/A	26,289	2,777	6,938	698		65,348
2017 Total		29,075	18,305	47,380	29,320	N/A	29,320	4,006	12,656	7,713	179	101,254
2016 Total		17,780	21,953	39,733	48,416	N/A	48,416	1,227	20,132	27,796		137,304
2015 Total		11,428	19,581	31,009	42,180	N/A	42,180	1,249	13,252	6,872		94,563
2014 Total		8,095	22,662	30,757	44,560	N/A	44,560	1,622	10,217	4,206		98,730
2013 Total		5,353	17,685	23,038	47,477	N/A	47,477	3,331	11,660	4,129		92,184
2012 Total		6,735	17,969	24,704	56,189	N/A	56,189	4,829	9,077	5,911		100,746
2011 Total		6,077	19,328	25,405	45,222	N/A	45,222	7,700	7,928	3,162		90,747
2010 Total		3,062	25,393	28,455	36,529	N/A	36,529	5,438	8,756	6,123		88,765
2009 Total		6,412	27,829	34,241	29,259	N/A	29,259	3,054	8,545	7,958		93,079
2008 Total		21,344	36,812	58,156	47,901	10,827	58,728	15,412	9,002	12,393		153,691
2007 Total		1,863	3,576	77,302	64,161	4,230	68,390	26,000	9,545	19,866		201,104
2006 Total		5,834	21,426	83,608	62,580	4,629	67,209		10,763	19,093		180,672
2005 Total		0	0	72,733	55,799	0	55,799		13,164	11,764		153,461
2004 Total		0	0	70,293	64,933	0	64,933		11,168	21,069		167,462
2003 Total		10,518	35,767	46,285	32,225	59,793	92,017		13,903	26,091		178,296
2002 Total				53,912	83,340		83,340		13,192	12,295		162,738
2001 Total				35,222	92,827		92,827		21,044	11,528		160,621
2000 Total				35,128	135,029		135,029		25,939	5,542		201,638
1999 Total				30,935	131,816		131,816		16,657	7,848		187,256
1998 Total				27,804	120,743		120,743		14,474	8,925		171,945
1997 Total				24,709	100,612		100,612		14,575	10,160		150,056
1996 Total				22,503	80,861		80,861		20,298	5,464		129,126
1995 Total				14,079	84,187		84,187		15,139	6,058		119,463
1994 Total				4,307	77,316		77,316		20,063	932		102,618

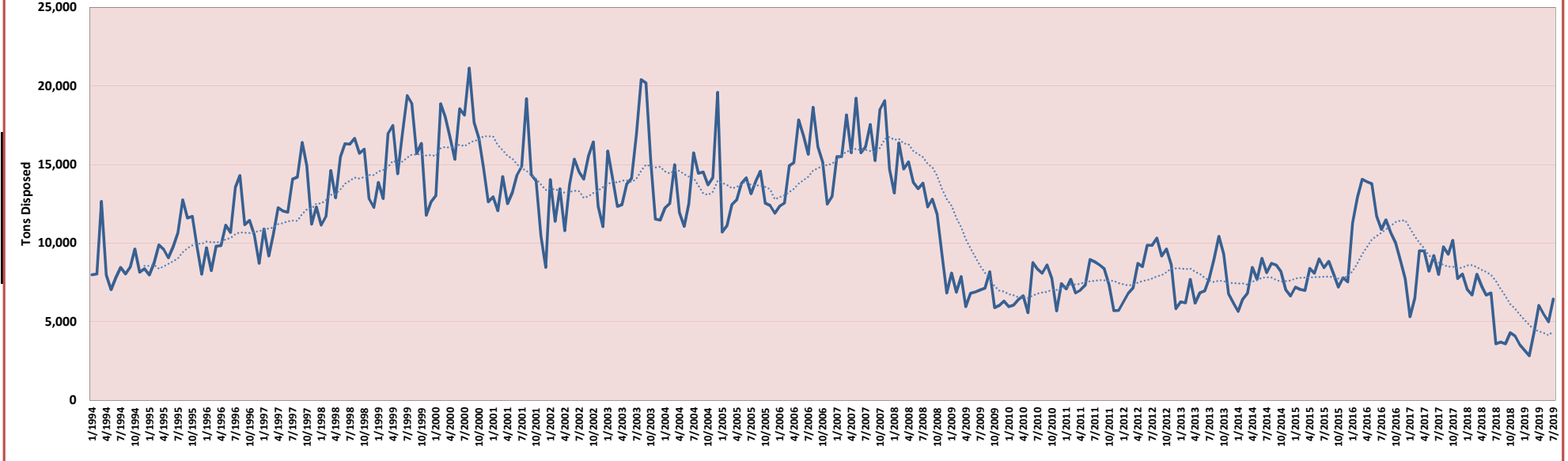
<sup>1</sup> Eastmont CDL tons are net tons - excludes recycled tons. Beginning 2002, Eastmont CDL disposed tons include "dirty wood".

<sup>2</sup> 3rd & Lander CDL tons are gross tons - includes some tons sent to Recovery 1 for recycling.

<sup>3</sup> Beginning March 2008 Lander self haul tons are included in total Rabanco at 3rd & Lander tons.

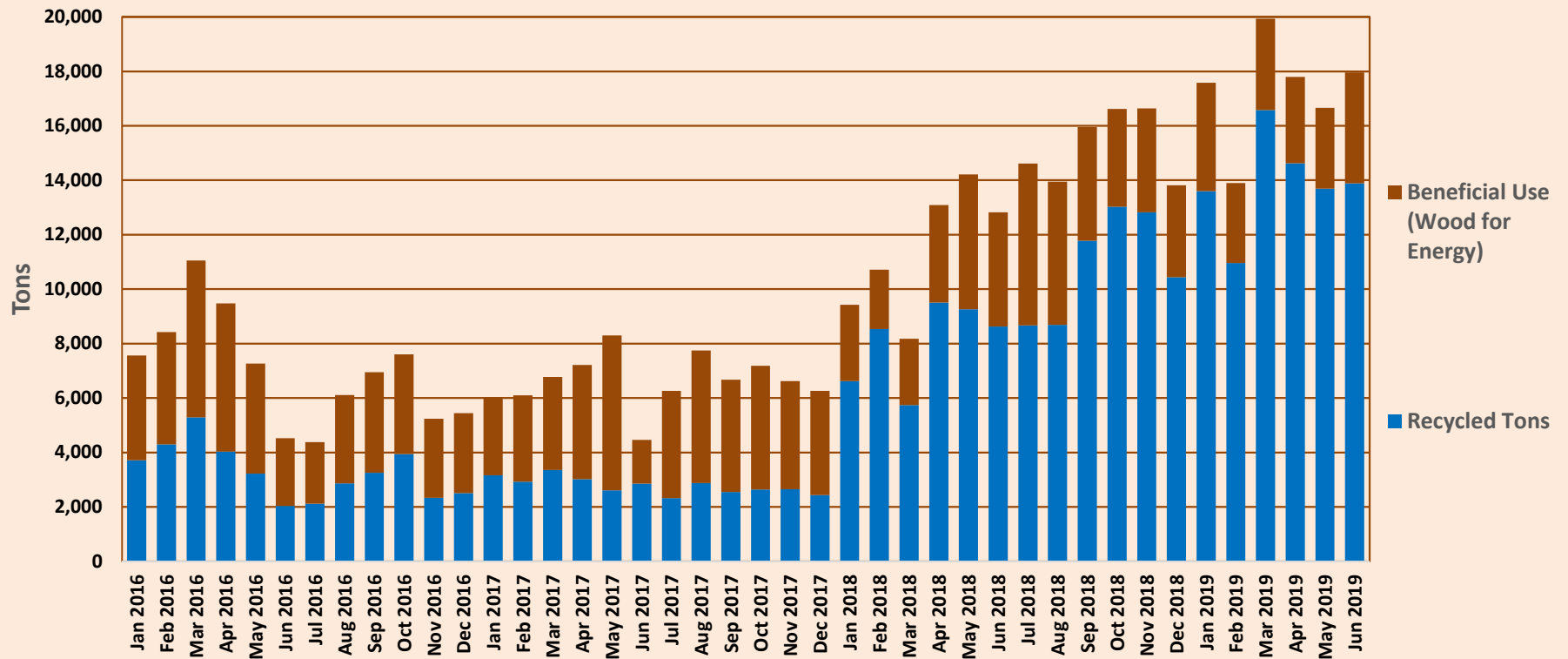
<sup>4</sup> Lander Direct data became available annually starting in 2007, monthly starting in 2011.

## City of Seattle C&D Tons Disposed



- |  |   |
|--|---|
| <p><b>Significant Dates:</b></p> <ul style="list-style-type: none"> <li>March 2001 - Nov 2001</li> <li>Dec. 2007 - June 2009</li> <li>June 2009 - Present</li> <li>January 2012</li> <li>January 2014</li> <li>January 2015</li> <li>January 2016</li> </ul> | <ul style="list-style-type: none"> <li>Recession</li> <li>Great Recession</li> <li>Economic Expansion</li> <li>Landfill disposal ban on concrete, asphalt paving and bricks.</li> <li>Mixed C&amp;D Recycling Facility certification program begins and Waste Diversion Reporting required.</li> <li>Landfill disposal ban on clean wood and tear off asphalt roofing for reuse.</li> <li>King County added disposal bans on same construction materials as SPU</li> <li>C&amp;D Facility Designation Agreements established</li> </ul> |
|--|---|

## Seattle Diverted Tons from Certified Mixed C&D Recycling Facilities



Does not include recycling at source separated recycling facilities.

Information from source separated recyclers is reported annually, information from certified mixed C&L recycling facilities is reported monthly.









Monthly Tons							
Month	Eastmont	3rd & Lander	Black River	Argo Direct	Lander Direct <sup>1</sup>	Waste Connections	Total
Jan-2018	2,801	3,224	716	283	27	0	7,051
Feb	2,587	2,865	904	46	294	0	6,697
Mar	3,244	3,431	959	93	296	0	8,024
Apr	2,028	3,325	1,137	27	745	0	7,263
May	2,103	3,191	1,182	132	85	0	6,693
Jun	2,143	3,462	999	114	112	0	6,830
Jul	1,987	1,209	254	-	137	0	3,587
Aug	2,409	1,149	128	-	10	0	3,696
Sep	2,228	1,025	207	-	123	0	3,583
Oct	2,508	1,335	208	3	251	0	4,305
Nov	2,148	1,067	178	-	695	0	4,088
Dec	2,459	1,007	66	-	-	0	3,532
Jan-2019	1,626	1,219	133	209	-	0	3,186
Feb	1,848	726	36	-	220	0	2,830
Mar	2,027	947	157	395	799	0	4,324
Apr	2,430	969	269	8	2,362	0	6,039
May	2,292	914	175	380	1,710	0	5,470
Jun	3,378	-	1,104	205	305	0	4,991
Jul	3,350	-	771	1,885	431	0	6,438

Yearly Totals	Eastmont	Lander	River	Direct	Direct <sup>1</sup>	Connections	Total
Total 2019	16,951	4,774	2,645	3,081	5,827	0	33,278
Total 2018	28,645	26,289	6,938	698	2,777	0	65,348
Total 2017	47,380	29,320	12,656	7,713	4,006	179	101,254
Total 2016	39,733	48,416	20,132	27,796	1,227	0	137,304
Total 2015	31,009	42,180	13,252	6,872	1,249	0	94,563
Total 2014	30,757	44,560	10,217	4,206	1,622	0	91,362
Total 2013	23,038	47,477	11,660	4,129	3,331	0	89,634
Total 2012	24,704	56,189	9,077	5,911	4,829	0	100,710
Total 2011	25,405	45,222	7,928	3,162	7,700	0	89,417
Total 2010	28,455	36,529	8,756	6,123	5,438	0	85,301
Total 2009	34,241	29,259	8,545	7,958	3,054	0	83,057
Total 2008	58,156	58,728	9,002	12,393	15,412	0	153,691
Total 2007	77,302	68,390	9,545	19,866	26,000	0	201,104
Total 2006	83,608	67,209	10,763	19,093	0	0	180,672
Total 2005	72,733	55,799	13,164	11,764	0	0	153,461
Total 2004	70,293	64,933	11,168	21,069	0	0	167,462
Total 2003	46,285	92,017	13,903	26,091	0	0	178,296
Total 2002	53,912	83,340	13,192	12,295	0	0	162,738
Total 2001	35,222	92,827	21,044	11,528	0	0	160,621
Total 2000	35,128	135,029	25,939	5,542	0	0	201,638
Total 1999	30,935	131,816	16,657	7,848	0	0	187,256
Total 1998	27,804	120,743	14,474	8,925	0	0	171,945
Total 1997	24,709	100,612	14,575	10,160	0	0	150,056
Total 1996	25,407	93,584	21,970	5,917	0	0	146,879
Total 1995	14,079	84,187	15,139	6,058	0	0	119,463
Total 1994	4,307	77,316	20,063	932	0	0	102,618

City of Seattle C&D Disposed Tons and Cumulatives

Cumulative Tons							
Month	Eastmont	3rd & Lander	Black River	Argo Direct	Lander Direct <sup>1</sup>	Waste Connections	Total
Jan-2018	2,801	3,224	716	283	27	0	7,051
Feb	5,388	6,089	1,620	329	321	0	13,748
Mar	8,632	9,521	2,580	421	618	0	21,771
Apr	10,660	12,846	3,717	449	1,363	0	29,034
May	12,763	16,037	4,899	581	1,448	0	35,728
Jun	14,906	19,499	5,897	695	1,560	0	42,557
Jul	16,893	20,707	6,152	695	1,697	0	46,144
Aug	19,303	21,856	6,279	695	1,708	0	49,841
Sep	21,530	22,881	6,486	695	1,831	0	53,424
Oct	24,038	24,216	6,694	698	2,082	0	57,729
Nov	26,186	25,282	6,872	698	2,777	0	61,816
Dec	28,645	26,289	6,938	698	2,777	0	65,348
Jan-2019	30,271	27,508	7,071	907	2,777	0	68,534
Feb	32,119	28,234	7,107	907	2,997	0	71,364
Mar	34,145	29,181	7,264	1,302	3,796	0	75,688
Apr	36,576	30,150	7,533	1,310	6,158	0	81,727
May	38,868	31,064	7,707	1,690	7,868	0	87,197
Jun	42,245	31,064	8,812	1,895	8,173	0	92,188
Jul	45,596	31,064	9,583	3,779	8,604	0	98,626

Cumulative vs Previous Year							
Month	Eastmont	3rd & Lander	Black River	Argo Direct	Lander Direct <sup>1</sup>	Waste Connections	Total
Jan-2018	-10%	265%	-33%	19%	0.27		33%
Feb	-12%	209%	-30%	-76%	6.68		16%
Mar	-13%	118%	-22%	-87%	0.69		2%
Apr	-21%	90%	-14%	-92%	2.08		-6%
May	-26%	70%	-13%	-91%	1.80		-9%
Jun	-32%	61%	-15%	-89%	0.73		-12%
Jul	-35%	44%	-25%	-90%	0.62		-18%
Aug	-38%	28%	-32%	-91%	0.54		-24%
Sep	-40%	15%	-38%	-91%	0.42		-29%
Oct	-41%	5%	-42%	-91%	-0.14		-32%
Nov	-41%	-4%	-42%	-91%	-0.15		-34%
Dec	-40%	-10%	-45%	-91%	-0.31		-35%
Jan-2019	981%	753%	888%	221%	100.33		872%
Feb	496%	364%	339%	176%	8.33		419%
Mar	296%	207%	182%	209%	5.15		248%
Apr	243%	135%	103%	192%	3.52		181%
May	205%	94%	57%	191%	4.43		144%
Jun	183%	59%	49%	173%	4.24		117%
Jul	170%	50%	56%	444%	4.07		114%

<sup>1</sup> Lander Direct tons from 2007 - 2010 were only available yearly.