

GARBAGE REPORT

4th Quarter 2017

Seattle Public Utilities, Economic Services Section

Report Date: February 16, 2018

Phone: (206) 684-4143

Total City Tonnage Breakdown

Self Haul¹

Q4 Self Haul Cars ²	720 Tons	48.0%	increase vs. same period in 2016
2016 Cumulative Self Haul Cars:	3,483 Tons	55.8%	increase vs. same period in 2016
Q4 Self Haul Trucks ³ :	21,676 Tons	38.9%	increase vs. same period in 2016
2017 Cumulative Self Haul Trucks:	95,807 Tons	50.6%	increase vs. same period in 2016
2017 Cumulative Self Haul Cars & Trucks:	99,290 Tons	50.8%	increase vs. same period in 2016

Residential

Q4 Single Family:	14,311 Tons	3.6%	increase vs. same period in 2016
2017 Cumulative Single Family:	56,541 Tons	4.1%	increase vs. same period in 2016
Q4 Multi Family:	11,679 Tons	0.4%	decrease vs. same period in 2016
2017 Cumulative Multi Family:	47,892 Tons	3.8%	decrease vs. same period in 2016
Q4 Total Residential:	25,990 Tons	1.8%	increase vs. same period in 2016
2017 Cumulative Total Residential:	104,434 Tons	0.3%	increase vs. same period in 2016

Commercial

Q4 Commercial:	34,724 Tons	1.3%	decrease vs. same period in 2016
2017 Cumulative Commercial:	139,038 Tons	0.2%	increase vs. same period in 2016

Total Tons Collected

Q4 Total Collected:	83,110 Tons	8.2%	increase vs. same period in 2016
2017 Cumulative Total Collected:	342,762 Tons	11.0%	increase vs. same period in 2016

Total Tons Delivered To Arlington⁴

Q4 Total Delivered:	88,200 Tons	14.5%	increase vs. same period in 2016
2017 Cumulative Total Delivered:	353,976 Tons	15.1%	increase vs. same period in 2016

Selected Statistics

Average Monthly Pounds Garbage Collected per Household YTD

Single Family Customers: 57 lbs/hh (165,482 hhs)
(4 or less dwelling units)

Multi Family Customers 46 lbs/hh (181,545 hhs)
(5 or more dwelling units)

Recycling & Disposal Station Self Haul Garbage Rates⁵

Cars: \$30.00 per trip

Trucks: \$145.00 per ton (\$30.00 minimum)

¹ The North Recycle & Disposal Station re-opened Nov 28, 2016 after a rebuild.

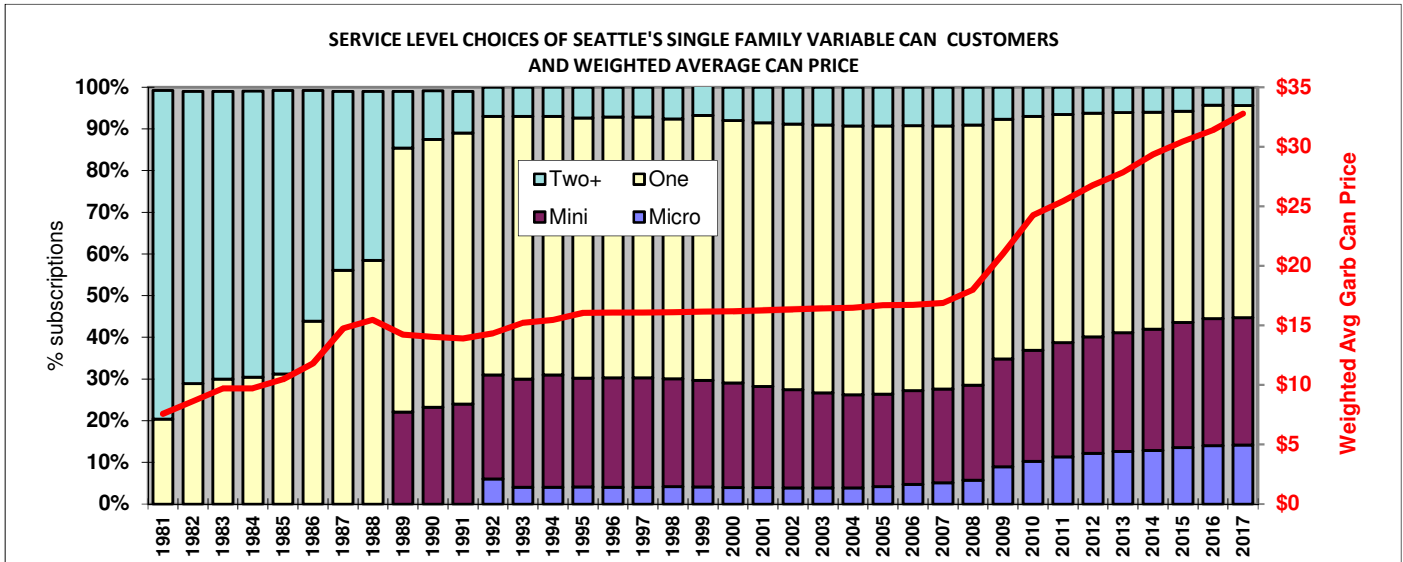
² Beginning Feb 2014 car trips are weighed. Prior to Feb 2014, car weights were calculated based on composition study results. Average weighed car trips were 280 pounds/car for Q1 2014 as compared to 480.8 pounds/car that were used from 2009 to present based on the 2008 waste composition study.

³ An estimated 38% of the self-haul truck tons are commercial according to a waste stream sampling study conducted in 2012.

⁴ Total tons collected not equal to total tons delivered due to operational factors.

⁵ Vans & pickup trucks pay the per ton truck rate.

Variable Can Service Level for Single Family Can Customers



	Micro	Mini	One	Two+	Weighted Avg Price
1981			20.40%	78.80%	\$7.57
1982			28.87%	70.13%	\$8.63
1985			31.20%	68.00%	\$10.47
1986			43.90%	55.30%	\$11.81
1987			56.10%	42.90%	\$14.74
1989		22.05%	63.36%	13.59%	\$14.22
1992	6.00%	25.00%	62.00%	7.00%	\$14.34
1993	4.00%	26.00%	63.00%	7.00%	\$15.23
1994	4.00%	27.00%	62.00%	7.00%	\$15.47
1995	4.06%	26.15%	62.44%	7.35%	\$16.06
1996	4.04%	26.23%	62.59%	7.14%	\$16.07
1998	4.16%	25.88%	62.35%	7.61%	\$16.10
1999	4.06%	25.60%	63.62%	7.72%	\$16.15
2000	3.93%	25.08%	63.02%	7.97%	\$16.19
2001	3.96%	24.24%	63.32%	8.49%	\$16.25
2002	3.85%	23.62%	63.72%	8.82%	\$16.35
2003	3.84%	22.85%	64.23%	9.08%	\$16.42
2004	3.86%	22.31%	64.54%	9.30%	\$16.48
2005	4.13%	22.22%	64.37%	9.28%	\$16.70
2006	4.72%	22.49%	63.57%	9.21%	\$16.73
2007	5.05%	22.50%	63.17%	9.28%	\$16.90
2008	5.66%	22.85%	62.45%	9.04%	\$17.98
2009	8.94%	25.89%	57.51%	7.67%	\$21.01
2010	10.21%	26.69%	56.08%	7.02%	\$24.25
2011	11.31%	27.45%	54.72%	6.53%	\$25.43
2012	12.13%	27.98%	53.68%	6.21%	\$26.76
2013	12.62%	28.49%	52.85%	6.04%	\$27.85
2014	12.80%	29.17%	52.01%	6.01%	\$29.34
2015	13.52%	30.02%	50.71%	5.75%	\$30.46
2016	13.99%	30.49%	51.22%	4.30%	\$31.39
2017	14.24%	30.62%	50.71%	4.43%	\$32.79

The weighted average method is used to estimate the average variable can price.

Current Monthly Variable Can Rates

Micro (12 gal)	\$22.85
Mini (19 gal)	\$28.00
One Can (32 gal)	\$36.45
Two Cans (64 gal)	\$72.90
Three Cans (96 gal)	\$109.35
Extra Garbage	\$11.35

Residential Dumpster Service

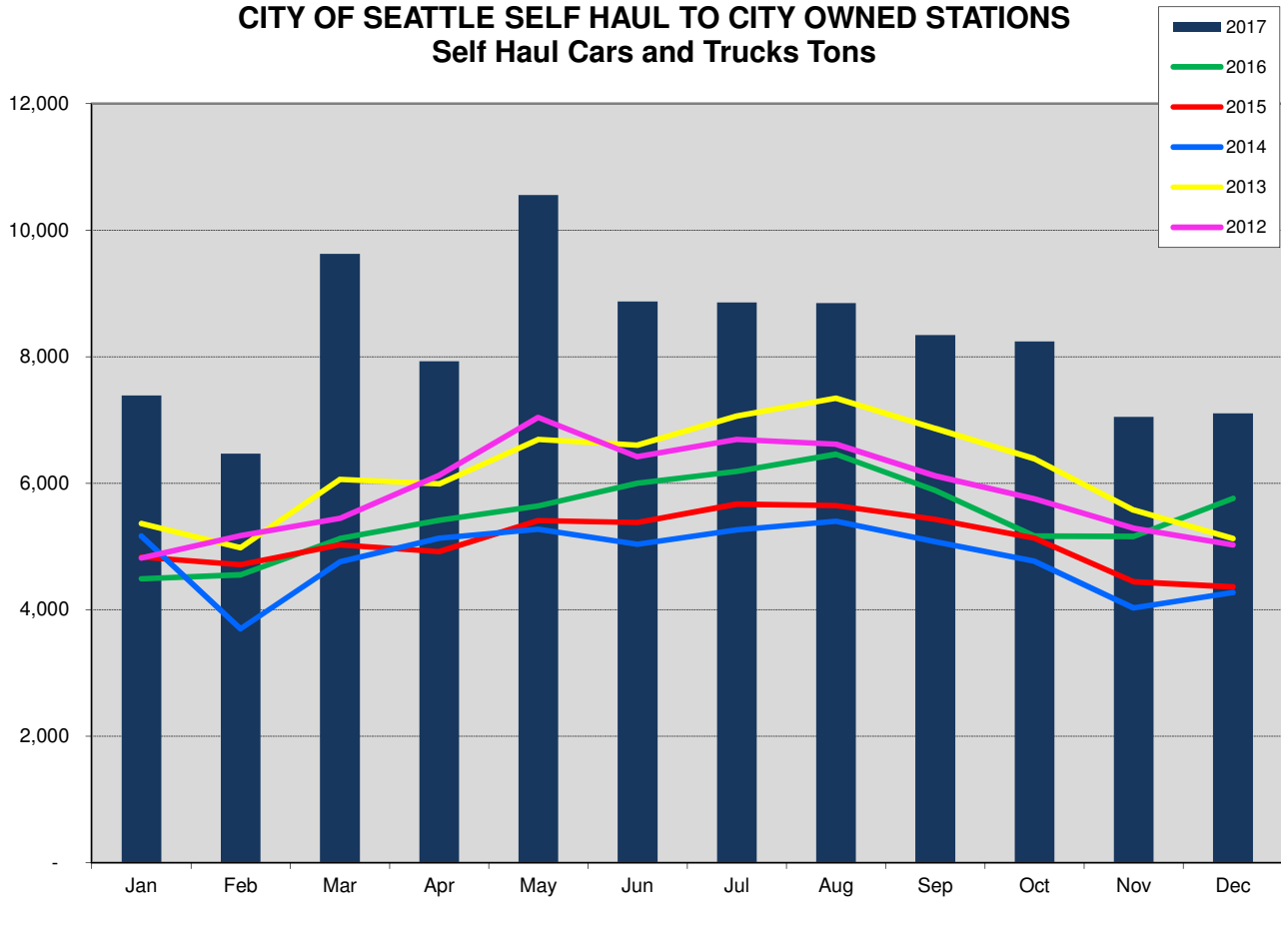
Most Common Monthly Rate*
\$230.14

*This is the rate for a one cubic yard un-compacted container picked up once per week. Residential dumpster service rates vary based on the number and size of containers and the number of pickups per week.

CITY OF SEATTLE GARBAGE TONNAGE REPORT

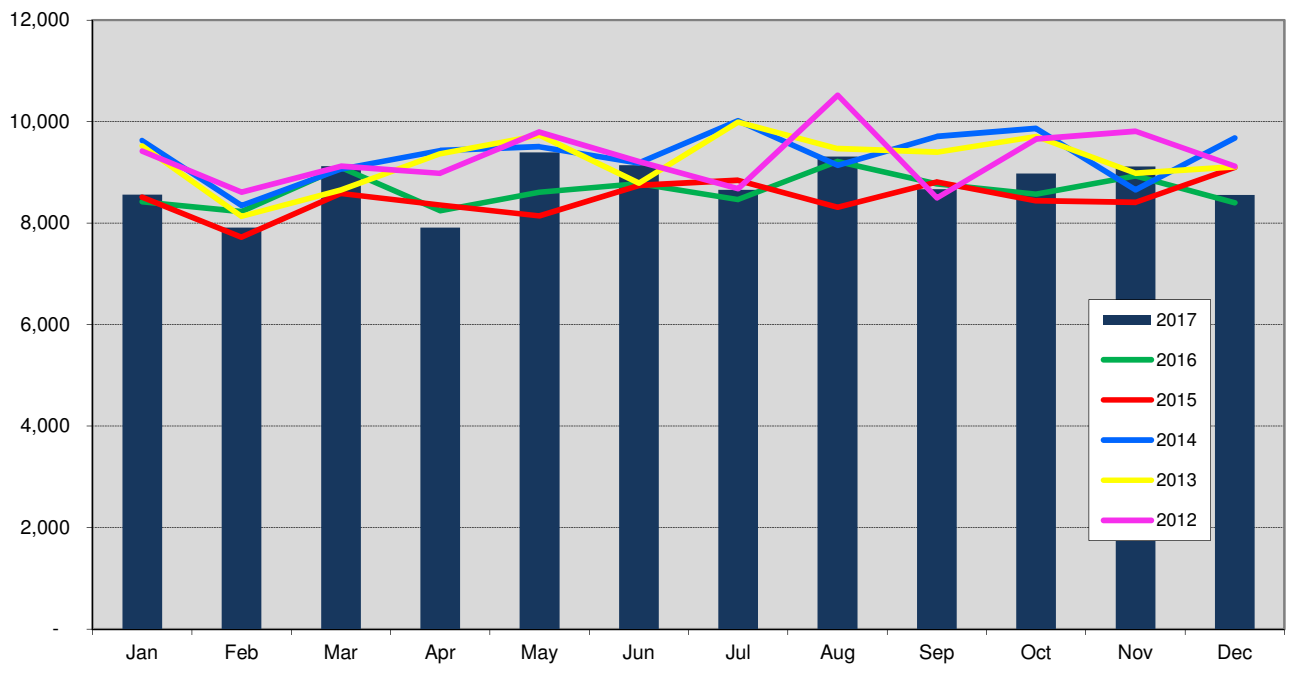
		SELF HAUL		RESIDENTIAL							COMMERCIAL GARBAGE							GRAND							
		Self Haul ²³		Recology/CleanScapes ¹⁹		Waste Management		TOTALS					Recology/CleanScapes		Rabanco			Waste Management			TOTAL	TOTAL			
Year	Month	Cars ²	Trucks	Self Haul	City Stations	Eastmont/ Lander ²⁰	City Stations	Eastmont	Single Family	SF ²⁴ Lbs/HH	Multi Family	MF ²⁴ Lbs/HH	Total Residential	City Stations	Eastmont	Recology ²²	City Stations	Lander ²¹	Eastmont	City Stations	Lander	Eastmont	COMMERCIAL	GARBAGE	
2016	1	154	4,335	4,490	4,406	189	4,129	0	4,416	54	4,309	59	8,725	5,155	0	730		508		4,425		448	11,266	24,481	
2016	2	154	4,397	4,551	4,115	224	4,036	0	4,228	51	4,147	57	8,376	5,129	0	69		472		4,575		496	10,741	23,667	
2016	3	183	4,941	5,124	4,415	159	4,456	0	4,687	57	4,343	60	9,029	5,547	0	72		509		5,035		515	11,677	25,830	
2016	4	205	5,209	5,414	4,327	164	4,053	0	4,298	52	4,246	58	8,544	5,290	0	110		784		4,620		459	11,264	25,222	
2016	5	199	5,443	5,642	4,184	177	4,191	0	4,443	54	4,110	56	8,553	5,486	0	74		827		4,777		441	11,605	25,799	
2016	6	211	5,789	6,000	4,459	222	4,269	0	4,618	56	4,332	59	8,950	5,636	0	80		848		4,712		582	11,857	26,807	
2016	7	243	5,941	6,184	4,245	188	4,146	0	4,426	54	4,153	56	8,579	5,400	0	53		807		4,452		428	11,141	25,903	
2016	8	213	6,244	6,457	4,357	184	4,443	0	4,748	58	4,237	57	8,984	5,866	0	104		886		5,160		542	12,557	27,998	
2016	9	187	5,702	5,889	4,377	204	4,240	0	4,623	57	4,198	61	8,820	5,488	0	109		858		4,506		491	11,451	26,161	
2016	10	156	5,009	5,165	4,184	135	4,080	40	4,570	56	3,867	45	8,439	5,511	0	132		843		4,660		629	11,775	25,379	
2016	11	142	5,020	5,162	4,292	193	4,325	0	4,750	58	4,060	47	8,810	5,604	0	107		915		4,897		511	12,033	26,005	
2016	12	188	5,574	5,763	4,096	128	4,069	0	4,492	55	3,801	44	8,293	5,418	0	107		913		4,607		320	11,364	25,420	
2017	1	224	7,165	7,389	4,231	171	4,177	0	4,607	56	3,971	46	8,578	5,198	0	85		730		4,699		265	10,978	26,945	
2017	2	205	6,264	6,469	4,005	163	3,895	0	3,945	48	4,117	47	8,062	4,901	0	142		863		4,282		416	10,604	25,135	
2017	3	264	9,364	9,628	4,439	225	4,456	0	4,892	60	4,228	48	9,120	5,668	0	163		839		4,968		557	12,195	30,943	
2017	4	295	7,632	7,926	4,054	221	3,803	0	4,341	53	3,737	43	8,078	5,278	0	136		725		4,644		428	11,211	27,216	
2017	5	327	10,229	10,556	4,377	202	4,552	0	5,082	62	4,049	46	9,131	5,725	0	25		831		5,080		394	12,056	31,743	
2017	6	352	8,524	8,876	4,426	243	4,433	0	4,961	60	4,142	47	9,103	5,734	0	25		823		4,980		431	11,992	29,971	
2017	7	392	8,465	8,857	4,085	160	4,177	0	4,694	57	3,728	42	8,422	5,381	0	182		787		4,713		336	11,399	28,678	
2017	8	352	8,498	8,850	4,593	156	4,471	2	5,051	61	4,171	47	9,222	5,938	0	186		837		5,140		414	12,515	30,587	
2017	9	354	7,990	8,344	4,432	153	4,140	1	4,656	56	4,071	45	8,727	5,362	0	205		775		4,539		483	11,364	28,435	
2017	10	265	7,976	8,241	4,292	148	4,301	0	4,763	58	3,977	44	8,741	5,467	0	0		805		4,817		591	11,680	28,662	
2017	11	227	6,821	7,048	4,413	160	4,420	0	4,945	60	4,048	45	8,993	5,387	0	0		842		5,066		564	11,859	27,900	
2017	12	228	6,879	7,107	3,975	158	4,122	0	4,603	56	3,653	40	8,256	5,170	0	0		840		4,675		501	11,185	26,547	
Total 2017		3,483	95,807	99,290	51,323	2,160	50,947	4	56,541	57	47,892	45	104,434	65,207	0	1,150		9,697		57,604		5,381	139,038	342,762	
Total 2016		2,236	63,604	65,840	51,458	2,167	50,437	40	54,298	55	49,803	55	104,102	65,528	0	1,746		9,169		56,426		5,860	138,729	308,672	
Total 2015		2,190	58,748	60,938	52,231	21	49,713	8	52,529	53	49,443	57	101,972	66,831	38	5,870		5,884		55,394		5,539	139,557	302,467	
Total 2014		2,487	55,360	57,847	56,344	230	55,396	241	59,772	61	52,439	63	112,211	66,888	2,431	3,378		5,680		55,804		5,275	139,457	309,515	
Total 2013		6,569	67,450	74,018	52,050	3,667	50,889	4,233	60,302	62	50,537	63	110,838	35,955	31,556			5,623		33,975		25,233	132,343	317,199	
Total 2012		6,285	64,190	70,474	52,651	3,007	53,052	2,709	60,906	62	50,514	65	111,420	41,082	27,298			5,883		38,527		21,300	134,089	315,984	
Total 2011		6,206	64,827	71,033	54,180	2,320	54,935	1,339	62,779	64	49,993	65	112,773	41,090	26,773			5,519		39,170		22,984	135,536	319,342	
Total 2010		6,230	73,062	79,292	53,799	3,587	54,995	1,715	64,309	66	49,788	66	114,097	37,844	32,486			2,742		42,042		27,066	142,180	335,569	
Total 2009		6,354	75,210	81,565	57,760	4,730	52,243	3,992	118,725	31,939	24,020		118,725	31,939	24,020			13,703	4,206	9,278	40,262	51	27,574	151,398	351,688
Total 2008		5,750	85,144	90,894	72,125	7,324	47,111	660	127,219				127,219					63,903	15,523	38,414	31,292	0	27,658	176,791	394,904
Total 2007		6,755	100,343	107,098	73,433	9,827	49,918	248	133,426				133,426	55,453	77,257	693		32,858	18,262	14,495	32,858	18,262	14,495	199,018	439,542
Total 2006		7,711	95,717	103,428	72,436	10,551	49,718	969	133,674				133,674	59,890	76,187			33,239	27,451	4,437	33,239	27,451	4,437	201,205	438,308
Total 2005		7,487	93,011	100,499	78,520	4,390	51,638	9	134,557				134,557	59,107	81,223			36,561	24,297	4,658	36,561	24,297	4,658	205,846	440,902
Total 2004		7,723	92,043	99,766	77,887	8,398	53,125	3,118	142,527				142,527	32,492	114,374			20,547	14,329	34,370	20,547	14,329	34,370	216,112	458,405
Total 2003		7,386	93,845	101,232	83,943	3,596	54,147	1,845	143,532				143,532	28,843	113,688			999		69,717			213,247	458,010	
Total 2002		7,353	95,537	102,891	86,806	406	55,145	554	142,910				142,910	31,135	112,409			8,237		65,413			217,195	462,996	
Total 2001		6,818	95,487	102,305	87,793	539	56,216	9	144,557				144,557					145,933		82,472			228,405	475,268	
Total 2000		6,323	95,560	101,883	77,300	869	67,309	368	145,845				145,845					136,695		91,722			228,417	476,145	
Total 1999 ¹³		6,989	97,378	104,367	46,595		101,123		147,718				147,718					139,396		85,952			225,348	477,433	
Total 1998		16,883	81,136	98,019	43,621	2,230	100,083		145,934				145,934					133,429		80,217			213,646	457,598	
Total 1997		15,750	81,396	97,146	47,290	16	100,632		147,938				147,938					129,617		79,053			208,670	453,754	
Total 1996 ¹²		13,777	70,091	83,868	47,784	962	95,543		144,289				144,289					123,521		71,448			194,969	423,127	
Total 1995 ⁹		13,279	71,208	84,487	48,626	572	100,926		150,124				150,124					121,121		75,581			196,702	431,313	
Total 1994		13,064	74,291	87,354	46,922	2,043	101,123		150,089				150,089					119,623		75,144			194,767	432,210	
Total 1993		8,665	76,853	85,518	47,269		96,859		144,127				144,127					126,676		73,915			200,591	430,236	
Total 1992		8,178	80,742	88,920	45,475		96,679		142,154				142,154					125,596		68,742			194,338	425,412	
Total 1991		7,947	68,576	76,523	44,228		96,494		140,722				140,722					147,868		74,389			222,257	439,502	
Total 1990 ³		7,253	73,939	81,192	44,249		96,278		140,528				140,528					157,664		78,461			236,125	457,845	
Total 1989 ^{4,5}		6,919	58,720	65,639	45,338		97,884		143,222				143,222					121,029		75,513			196,542	405,403	
Total 1988 ⁶		11,810	75,557	87,367	96,405		83,564		179,968				179,968					125,494		72,680			198,174	465,509	
Total 1987 ⁷		13,622	88,147	101,769	99,159		89,685		188,844				188,844					170,703		55,2					

CITY OF SEATTLE SELF HAUL TO CITY OWNED STATIONS Self Haul Cars and Trucks Tons

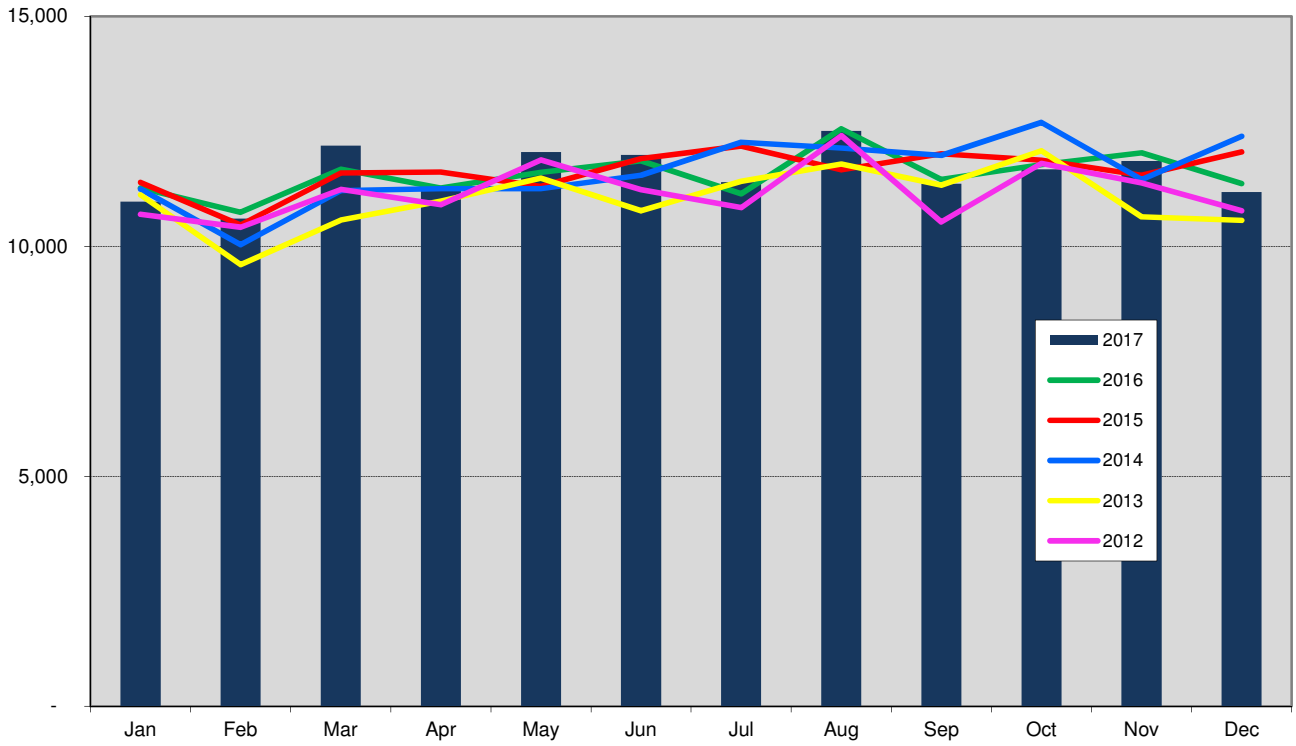


The North Transfer Station was closed from January 2014 - November 2016 for a rebuild.

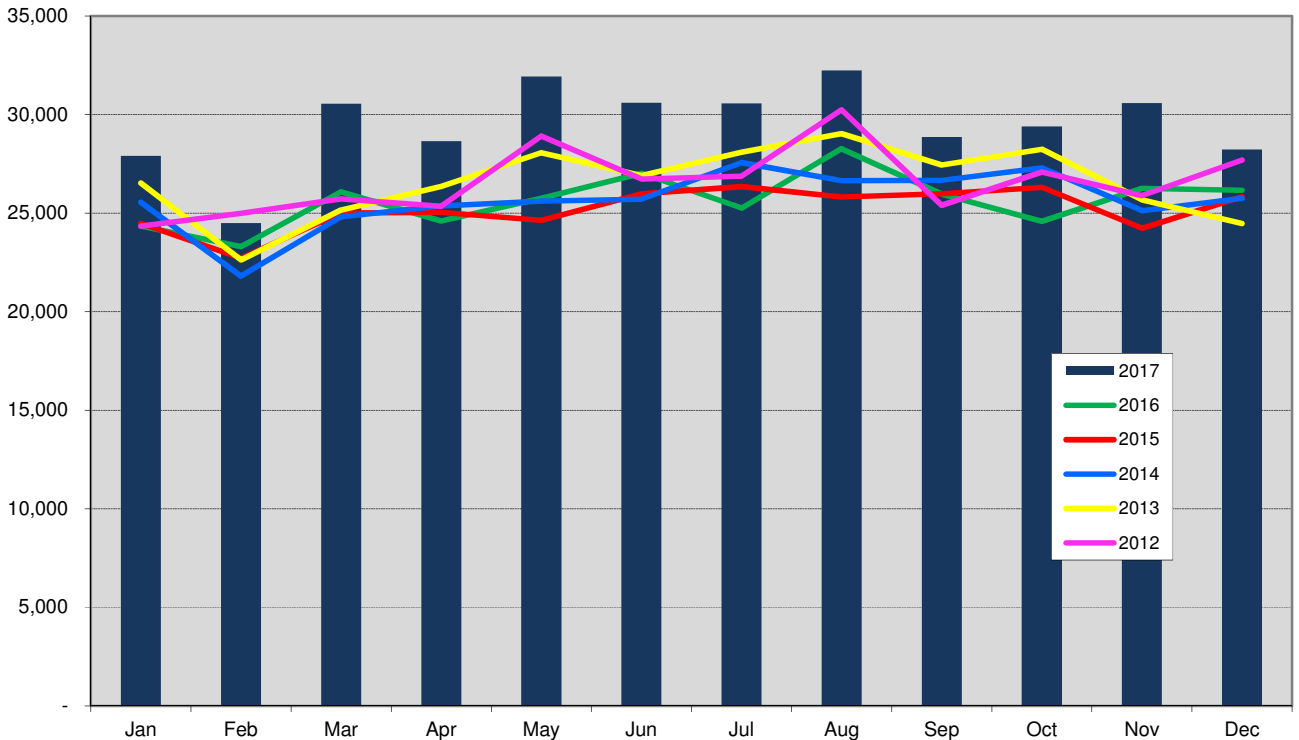
CITY OF SEATTLE RESIDENTIAL COLLECTION Total City Tons



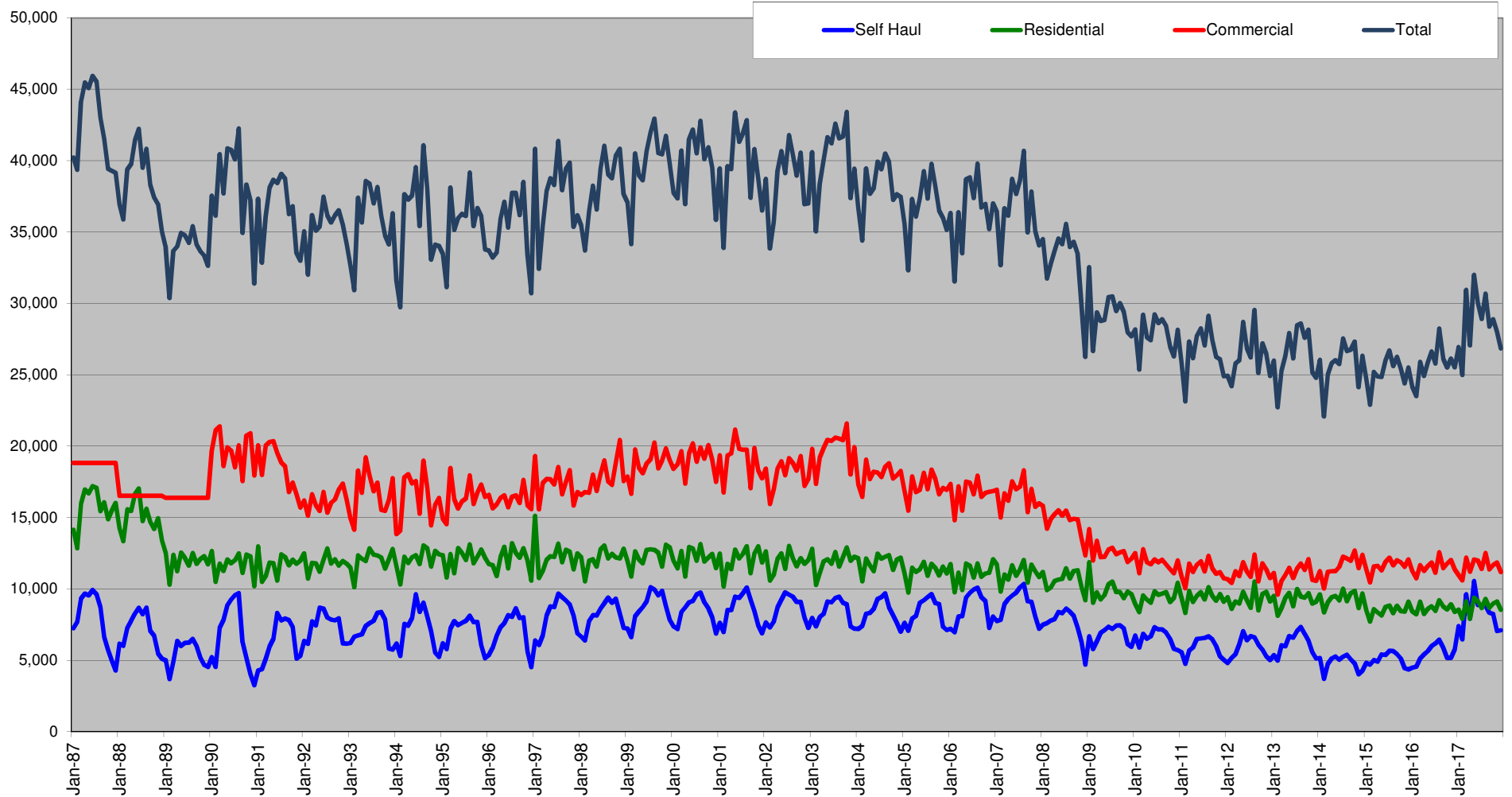
CITY OF SEATTLE Commercial Garbage Total Tons Collected



CITY OF SEATTLE TOTAL OUTBOUND TONS Total Tons Delivered to Arlington Landfill

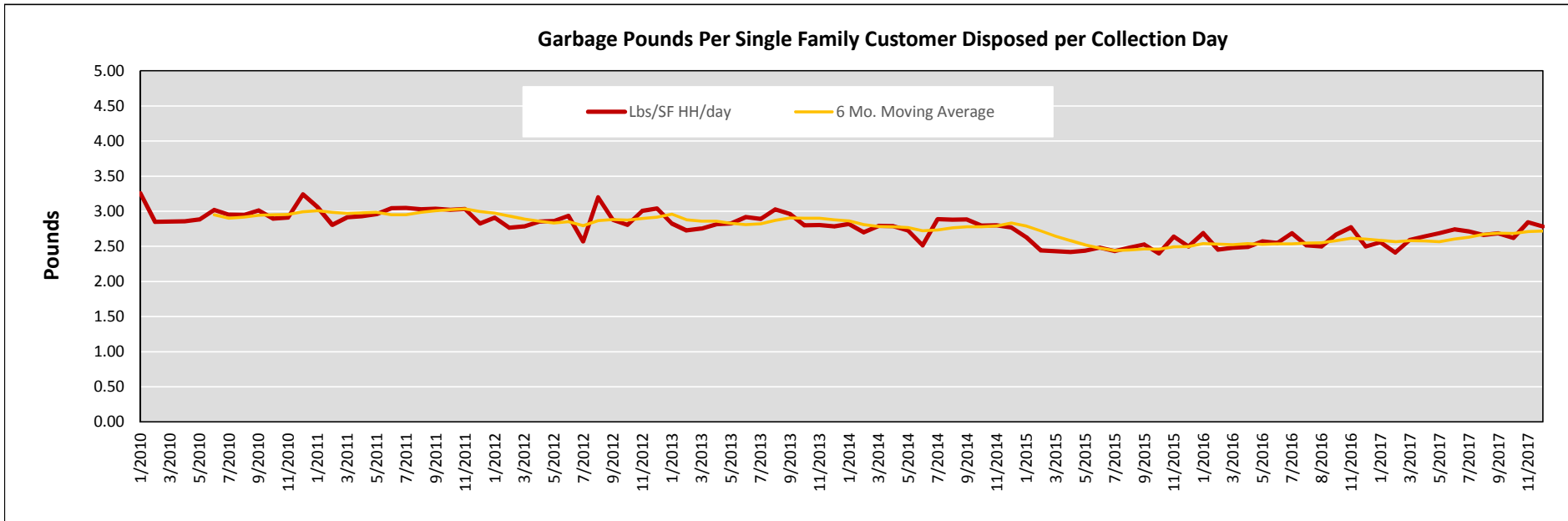


City of Seattle Garbage Disposal



Monthly commercial tonnage for 1987-1989 estimated from annual data.

Effects of the 2015 ban on organics in the garbage container.



Notes: April 2009 Organics collection changes from biweekly to weekly collection and is mandatory for single family customers
 September 2011 Organics service is mandatory for multi family customers
 January 2015 Organics are banned from the garbage for all customers