

GARBAGE REPORT

4th Quarter 2012

Seattle Public Utilities, Economic Services Section

Report Date: January 31, 2013

Phone: (206) 684-4143

Total City Tonnage Breakdown

Self Haul

Q4 Self Haul Cars ¹	1,439 Tons	5.5% increase vs. same period in 2011
2012 Cumulative Self Haul Cars:	6,285 Tons	1.3% increase vs. same period in 2011
Q4 Self Haul Trucks ² :	14,617 Tons	2.4% decrease vs. same period in 2011
2012 Cumulative Self Haul Trucks:	64,190 Tons	1.0% decrease vs. same period in 2011
2012 Cumulative Self Haul Cars & Trucks:	70,474 Tons	0.8% decrease vs. same period in 2011

Residential

Q4 Residential Collection	28,585 Tons	2.3% increase vs. same period in 2011
2012 Cumulative Residential Collection:	111,402 Tons	1.2% decrease vs. same period in 2011

Commercial

Q4 Commercial Tons	33,952 Tons	2.9% increase vs. same period in 2011
2012 Cumulative Commercial Tons:	134,089 Tons	1.1% decrease vs. same period in 2011

Total

Q4 Total Tons Disposed:	78,594 Tons	1.7% increase vs. same period in 2011
2012 Cumulative Total Tons Disposed:	315,966 Tons	1.1% decrease vs. same period in 2011

Selected Statistics

Average Monthly Pounds per Household YTD

Single Family Garbage Can Customers:	62	(163,164 households)
Multi Family Garbage Dumpster Customers:	65	(129,761 households)

Recycling & Disposal Station Self Haul Garbage Rates³:

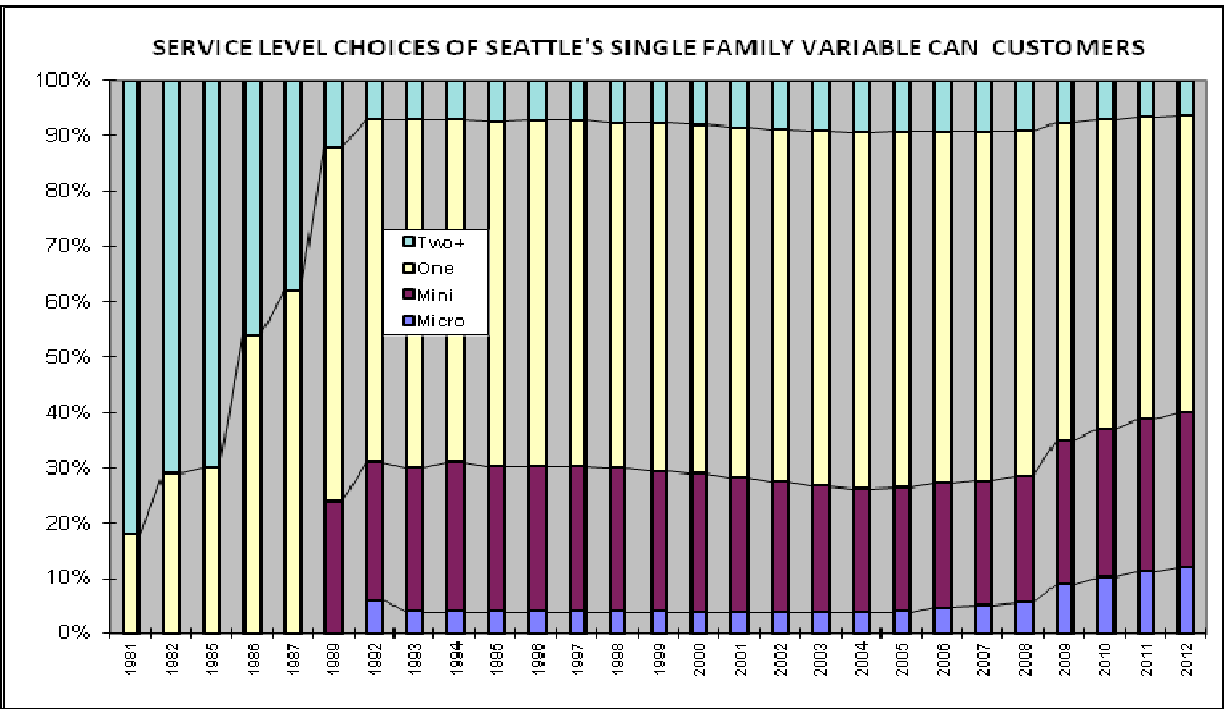
Cars: \$30.00 per trip Trucks: \$145.00 per ton (\$30.00 minimum)

Variable Can Customer Service Levels¹

¹ Car tons calculated based on 480.8 pounds per car for 2009 to present according to study done from Jan-Dec 2008

² An estimated 53% of the self-haul truck tons are commercial according to a waste stream sampling study conducted in 2000.

³ Vans & pickup trucks pay the per ton truck rate.



	Micro	Mini	One	Two+
1981			18.00%	82.00%
1982			29.00%	71.00%
1985			30.00%	70.00%
1986			54.00%	46.00%
1987			62.00%	38.00%
1989		24.00%	64.00%	12.00%
1992	6.00%	25.00%	62.00%	7.00%
1993	4.00%	26.00%	63.00%	7.00%
1994	4.00%	27.00%	62.00%	7.00%
1995	4.06%	26.15%	62.44%	7.35%
1996	4.04%	26.23%	62.59%	7.14%
1997	4.04%	26.23%	62.59%	7.14%
1998	4.16%	25.88%	62.35%	7.61%
1999	4.06%	25.60%	63.62%	7.72%
2000	3.93%	25.08%	63.02%	7.97%
2001	3.96%	24.24%	63.32%	8.49%
2002	3.85%	23.62%	63.72%	8.82%
2003	3.84%	22.85%	64.23%	9.08%
2004	3.86%	22.31%	64.54%	9.30%
2005	4.13%	22.22%	64.37%	9.28%
2006	4.72%	22.49%	63.57%	9.21%
2007	5.05%	22.50%	63.17%	9.28%
2008	5.66%	22.85%	62.45%	9.04%
2009	8.93%	25.89%	57.51%	7.67%
2010	10.21%	26.69%	56.08%	7.02%
2011	11.31%	27.45%	54.72%	6.53%
2012	12.13%	27.98%	53.68%	6.21%

Monthly Variable Can Rates:

Micro (12 gal) \$17.55
 Mini (19 gal) \$21.55
 One Can (32 gal) \$28.05
 Two Cans (64 gal) \$56.10
 Each Add'l Can \$28.05

Residential Dumpster Service²
 Most Common Monthly Rate
 \$195.30

¹ Based on single-family customers only

² This is the rate for a one cubic yard un-compacted container picked up once per week, which is the most common dumpster service level. Residential dumpster service rates vary based on the number and size of containers and the number of pickups per week.

CITY OF SEATTLE GARBAGE TONNAGE REPORT

		SELF HAUL			RESIDENTIAL							COMMERCIAL GARBAGE							GRAND				
		Self Haul		Total	CS ¹⁹		WM		TOTALS			CS		Rabanco		WM			TOTAL	TOTAL			
Year	Month	Cars ²	Trucks	SELF HAUL	City Stations	Eastmont/Lander ²⁰	City Stations	Eastmont	Single Family	Avg SF Lbs/HH	Multi Family	Avg MF Lbs/HH	Total Residential	City Stations	Eastmont	City Stations	Lander	Eastmont	City Stations	Lander	Eastmont	COMMERCIAL	GARBAGE
2011	1	459	5,120	5,579	4,530	193	4,543	103	5,211	64	4,158	66	9,369	3,376	2,019		236		3,300	1,964		10,894	25,842
2011	2	359	4,403	4,762	4,045	165	4,023	89	4,559	56	3,764	59	8,323	3,015	1,938		428		2,970	1,706		10,058	23,143
2011	3	439	5,247	5,686	4,744	191	4,828	89	5,442	67	4,410	69	9,852	3,558	2,208		516		3,540	1,958		11,780	27,318
2011	4	534	5,365	5,899	4,331	231	4,428	95	4,977	61	4,109	64	9,085	3,356	2,149		472		3,330	1,881		11,188	26,173
2011	5	560	5,945	6,505	4,552	159	4,727	75	5,273	65	4,241	66	9,514	3,558	2,171		485		3,528	1,955		11,697	27,715
2011	6	578	5,964	6,542	4,728	164	4,760	124	5,431	67	4,345	68	9,776	3,709	2,238		492		3,476	2,024		11,940	28,258
2011	7	682	5,890	6,571	4,413	185	4,565	105	5,196	64	4,071	64	9,268	3,474	2,261		454		3,249	1,787		11,225	27,065
2011	8	651	6,032	6,682	4,813	227	4,987	104	5,656	69	4,474	70	10,129	3,589	2,583		517		3,538	2,092		12,310	29,130
2011	9	582	5,887	6,469	4,600	224	4,401	296	5,427	67	4,094	64	9,521	3,482	2,343		480		3,058	2,080		11,443	27,433
2011	10	471	5,531	6,002	4,431	198	4,429	126	5,149	63	4,035	63	9,184	3,238	2,378		447		2,990	2,017		11,071	26,257
2011	11	432	4,856	5,288	4,578	241	4,748	76	5,412	67	4,230	66	9,643	3,388	2,268		497		3,151	1,867		11,170	26,101
2011	12	460	4,588	5,048	4,415	142	4,495	56	5,046	62	4,062	64	9,108	3,348	2,217		493		3,040	1,654		10,752	24,908
2012	1	417	4,399	4,816	4,374	337	4,492	216	5,196	64	4,223	66	9,419	3,352	2,064		473		3,182	1,624		10,695	24,930
2012	2	466	4,702	5,168	4,157	138	4,260	57	4,713	58	3,899	61	8,612	3,158	2,103		476		2,948	1,732		10,417	24,197
2012	3	444	4,997	5,441	4,360	182	4,514	65	4,975	61	4,146	65	9,121	3,269	2,466		481		3,260	1,762		11,238	25,800
2012	4	543	5,579	6,122	4,294	183	4,379	125	4,870	60	4,111	64	8,981	3,272	2,184		455		3,192	1,799		10,902	26,005
2012	5	536	6,502	7,038	4,615	283	4,797	97	5,359	66	4,434	69	9,793	3,590	2,387		510		3,449	1,941		11,876	28,707
2012	6	595	5,822	6,417	4,388	214	4,438	165	5,026	62	4,179	65	9,205	3,513	2,241		476		3,206	1,795		11,230	26,852
2012	7	635	6,054	6,689	4,433	226	3,664	348	4,584	56	4,087	64	8,671	3,531	2,264		444		3,087	1,519		10,845	26,206
2012	8	553	6,061	6,613	4,598	298	5,057	568	5,967	73	4,553	71	10,521	3,580	2,466		574		3,661	2,126		12,406	29,541
2012	9	656	5,456	6,113	4,077	207	3,907	305	4,672	58	3,824	59	8,496	3,190	2,288		445		2,925	1,679		10,528	25,136
2012	10	524	5,225	5,750	4,546	294	4,580	235	5,234	64	4,421	68	9,655	3,698	2,296		511		3,366	1,933		11,803	27,208
2012	11	451	4,836	5,286	4,533	357	4,577	342	5,360	66	4,449	69	9,809	3,533	2,268		522		3,281	1,774		11,378	26,473
2012	12	464	4,556	5,021	4,267	278	4,389	187	4,950	61	4,170	64	9,121	3,397	2,271		517		2,971	1,615		10,771	24,913
Total 2012 ²¹		6,285	64,190	70,474	52,644	2,997	53,052	2,709	60,906	62	50,497	65	111,402	41,082	27,298		5,883		38,527	21,300		134,089	315,966
Total 2011		6,206	64,827	71,033	54,180	2,320	54,935	1,339	62,779	64	49,993	65	112,773	41,090	26,773		5,519		39,170	22,984		135,536	319,342
Total 2010		6,230	73,062	79,292	53,799	3,587	54,995	1,715	64,309	66	49,788	66	114,097	37,844	32,486		2,742		42,042	27,066		142,180	335,569
Total 2009		6,354	75,210	81,565	57,760	4,730	52,243	3,992					118,275	31,939	24,020	13,703	4,206	9,278	40,627	51	27,574	151,398	351,688
Total 2008		5,750	85,144	90,894	72,125	7,324	47,111	660					127,219			63,903	15,523	38,414	31,292	0	27,658	176,791	394,904
Total 2007		6,755	100,343	107,098	73,433	9,827	49,918	248					133,426			55,453	77,257	693	32,858	18,262	14,495	199,018	439,542
Total 2006		7,711	95,717	103,428	72,436	10,551	49,718	969					133,674			59,890	76,187		33,239	27,451	4,437	201,205	438,308
Total 2005		7,487	93,011	100,499	78,520	4,390	51,638	9					134,557			59,107	81,223		36,561	24,297	4,658	205,846	440,902
Total 2004		7,723	92,043	99,766	77,887	8,398	53,125	3,118					142,527			32,492	114,374		20,547	14,329	34,370	216,112	458,405
Total 2003		7,386	93,845	101,232	83,943	3,596	54,147	1,845					143,532			28,843	113,688		999	69,717		213,247	458,010
Total 2002		7,353	95,537	102,891	86,806	406	55,145	554					142,910			31,135	112,409		8,237		65,413	217,195	462,996
Total 2001		6,818	95,487	102,305	87,793	539	56,216	9					144,557						145,933		82,472	228,405	475,268
Total 2000		6,323	95,560	101,883	77,300	869	67,309	368					145,845						136,695		91,722	228,417	476,145
Total 1999 ¹³		6,989	97,378	104,367	46,595		101,123						147,718						139,396		85,952	225,348	477,433
Total 1998		16,883	81,136	98,019	43,621	2,230	100,083						145,934						133,429		80,217	213,646	457,598
Total 1997		15,750	81,396	97,146	47,290	16	100,632						147,938						129,617		79,053	208,670	453,754
Total 1996 ¹²		13,777	70,091	83,868	47,784	962	95,543						144,289						123,521		71,448	194,969	423,127
Total 1995 ⁵		13,279	71,208	84,487	48,626	572	100,926						150,124						121,121		75,581	196,702	431,313
Total 1994		13,064	74,291	87,354	46,922	2,043	101,123						150,089						119,623		75,144	194,767	432,210
Total 1993		8,665	76,853	85,518	47,269		96,859						144,127						126,676		73,915	200,591	430,236
Total 1992		8,178	80,742	88,920	45,475		96,679						142,154						125,596		68,742	194,338	425,412
Total 1991		7,947	68,576	76,523	44,228		96,494						140,722						147,868		74,389	222,257	439,502
Total 1990 ³		7,253	73,939	81,192	44,249		96,278						140,528						157,664		78,461	236,125	457,845
Total 1989 ^{4,5}		6,919	58,720	65,639	45,338		97,884						143,222						121,029		75,513	196,542	405,403
Total 1988 ⁶		11,810	75,557	87,367	96,405		83,564						179,968						125,494		72,680	198,174	465,509
Total 1987 ⁷		13,622	88,147	101,769	99,159		99,159						188,844						170,703		55,212	225,915	516,528
Total 1986		25,278	105,442	130,720	100,190		90,396						190,586						151,189		50,947	202,136	523,442

1 The two city owned recycling and disposal stations are NRDS in the north end of the city and SRDS in the South end.

2 Car weight estimate of 480.8 pounds per car based on study done from Jan - Dec 2008

Car weight estimate for 2001/2008 based on 378.8 pounds per car.

Car weight estimate for 1999/2000 based on 333 pounds per car

Car weight estimate for 1998 based on 433 pounds per car.

Car weight estimate for 1994/95 based on 290 pounds per car.

3 Wood Waste Program at city owned transfer stations began in Jan, 1990, ended as separate program 2009

4 Apartment Recycling Program began in May, 1989

5 Curbside Yard Waste Collection began in January, 1989

6 Curbside Recycling Program began in February, 1988

7 Yard Waste "Clean Green" Program began in August, 1987

8 In 1995 3,220 tons of yard waste residuals were returned to SRDS and not weighed in. Added to self haul truck tons.

9 When tons are diverted to a private station it is usually due to equipment failure or maintenance.

10 Eastmont figures are "incoming" tons as reported by Waste Management.

11 Rabanco's tons are "incoming" beginning 1/1/1999 as reported by Rabanco.

12 158 commercial tons were taken to Klickitat from Rabanco in May 96 due to container shortages. These tons have been added back in the above table.

13 The large decrease in car tons from '98 to '99 is attributable to two factors. There was an increase in the per ton "car" rate from \$8.50 to \$13.00.

In addition, vans/pick-ups are no longer considered as "car" rate & must pay the per ton rate as "trucks".

14 January 2005 Ban on recyclables in garbage is instituted.

17 Beginning April 2005 Rabanco began Co-Collecting multi-family residential and commercial garbage in the same truck.

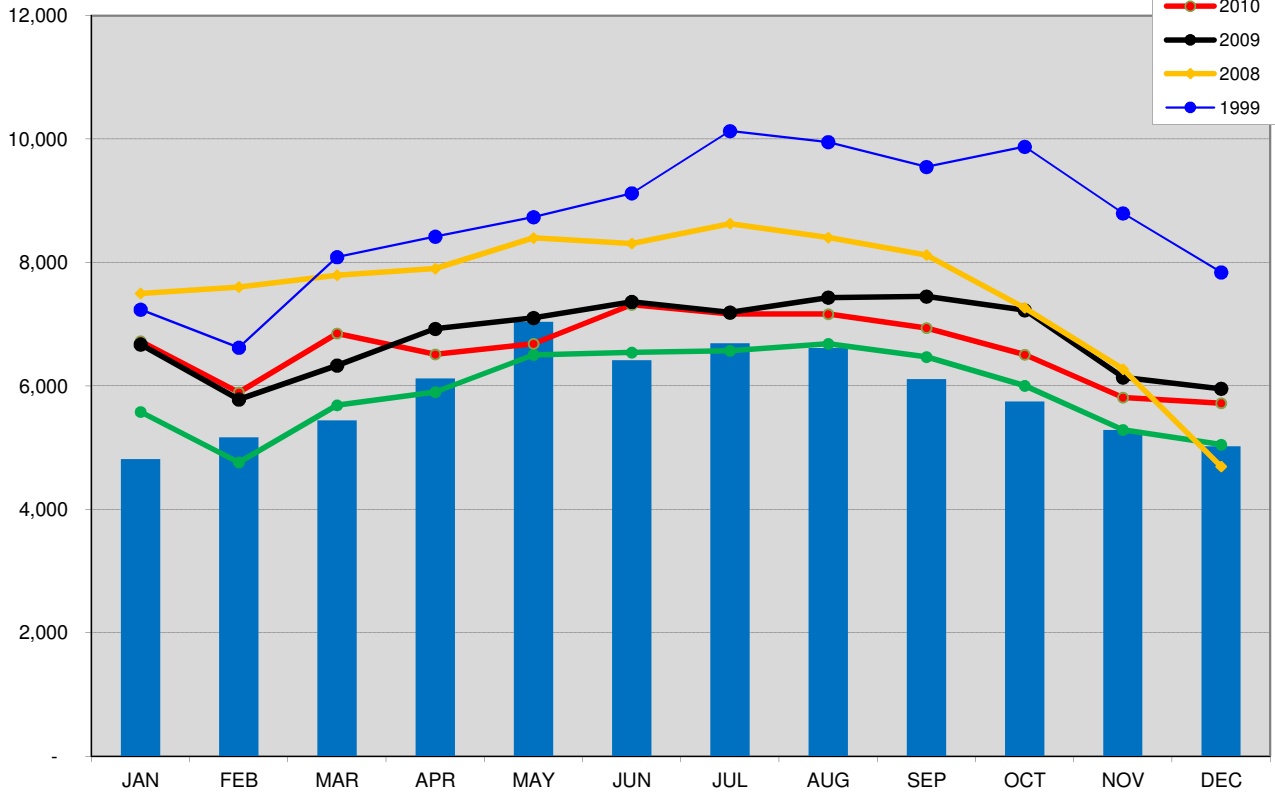
18 Aug 2007 Eastmont Station open to commercial garbage again

19 Cleanscapes and Waste Management began new 10-yr contract on 3/30/2009. Rabanco collects some non-contract garbage only.

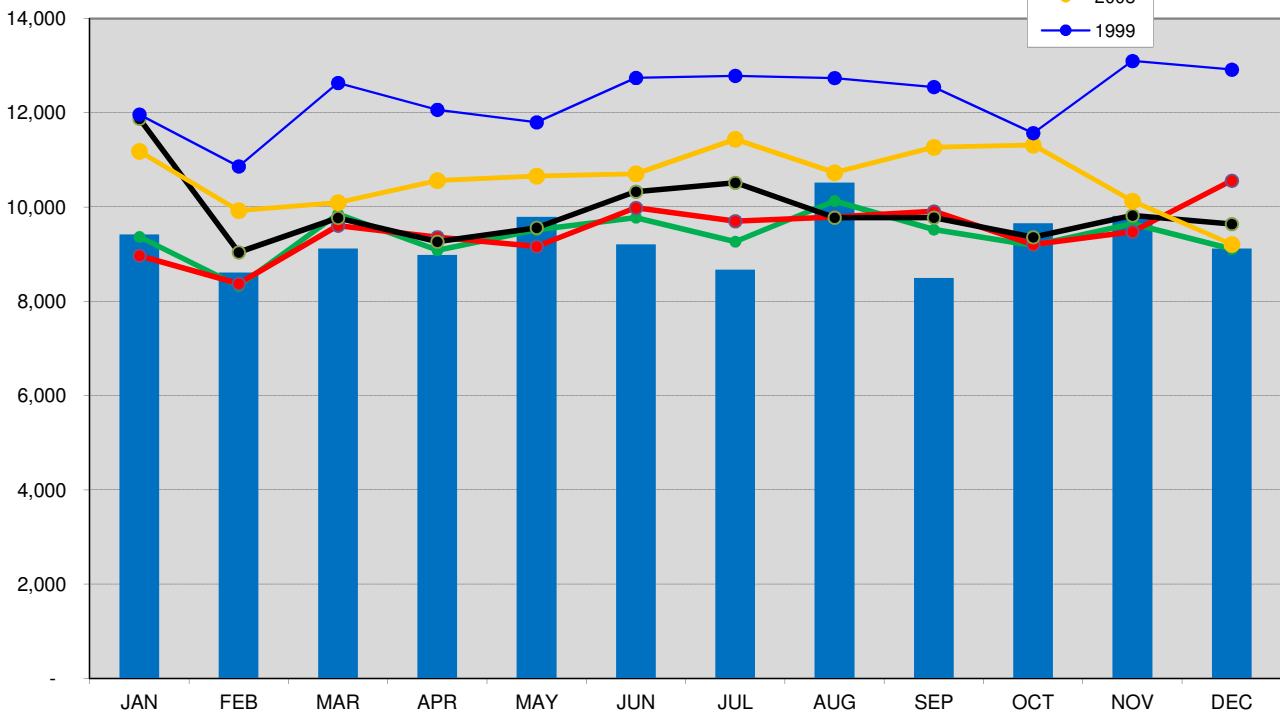
20 All tons to Lander only prior to 2007. All tons to Eastmont only after 2009.

2007: 9,766

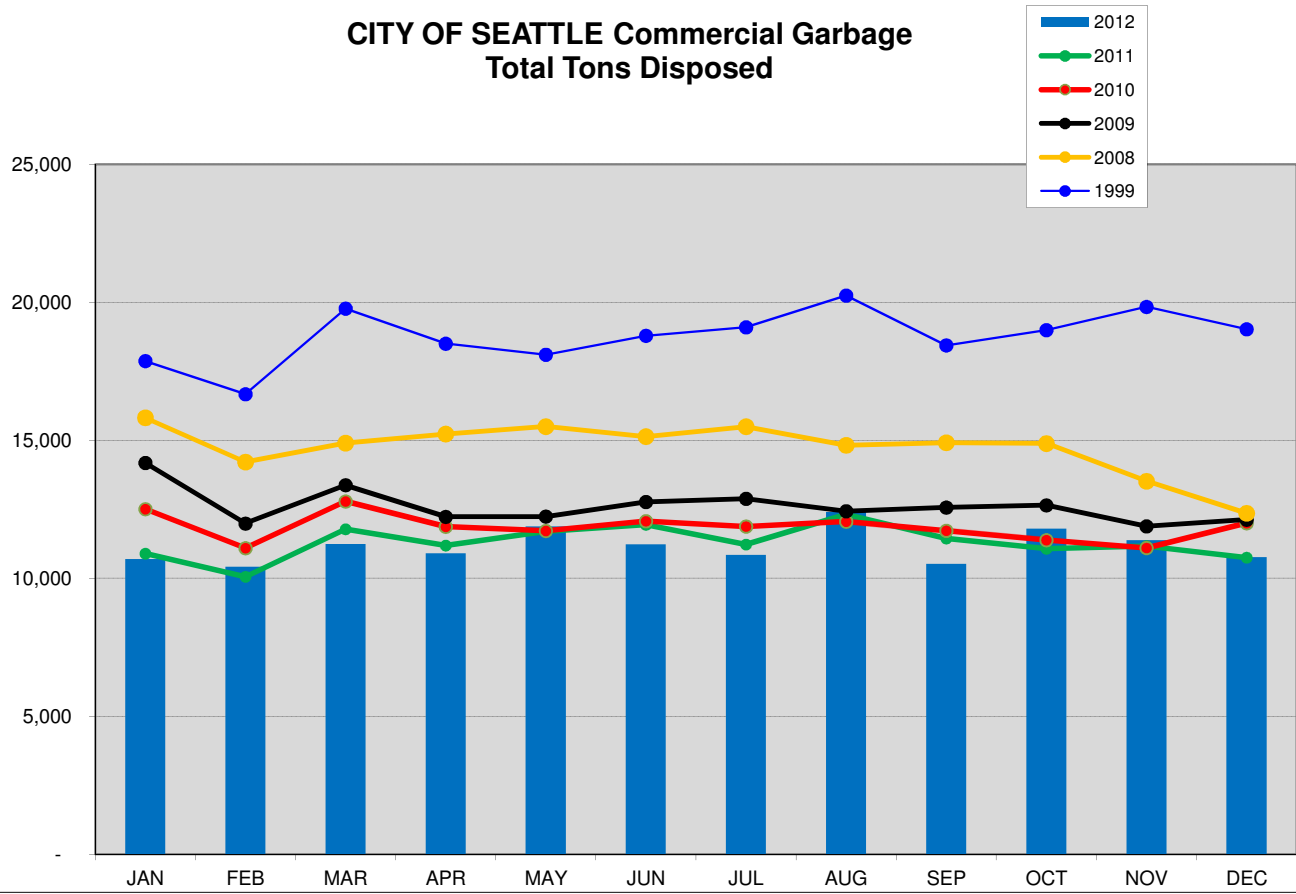
CITY OF SEATTLE SELF HAUL TO CITY OWNED STATIONS Self Haul Cars and Trucks



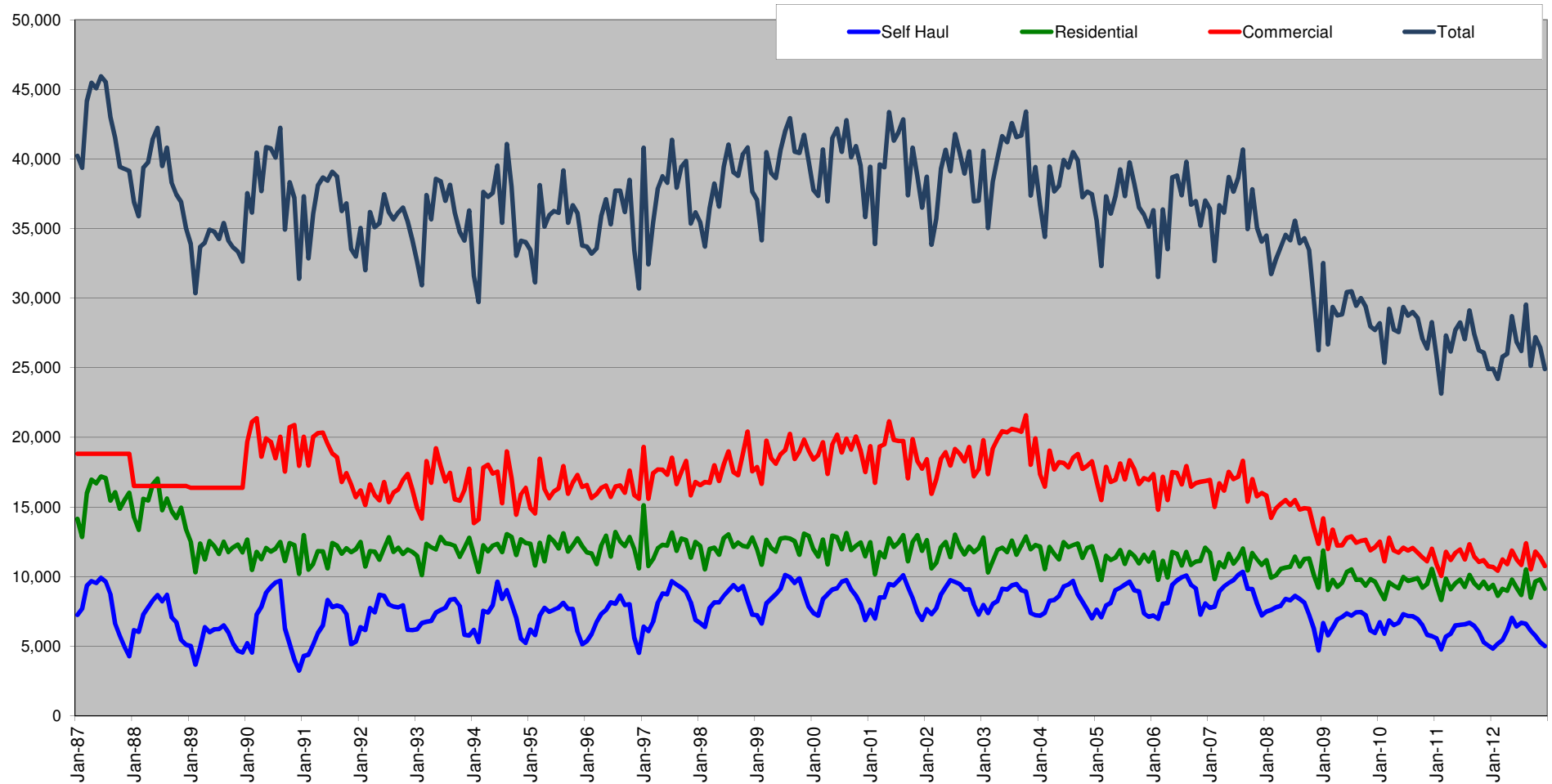
CITY OF SEATTLE RESIDENTIAL COLLECTION Total City Tons



CITY OF SEATTLE Commercial Garbage Total Tons Disposed



City of Seattle Garbage Disposal



Monthly commercial tonnage for 1987-1989 estimated from annual data.