

GARBAGE REPORT

December 2001

Seattle Public Utilities, Resource Planning Division, Forecasting & Evaluation Section

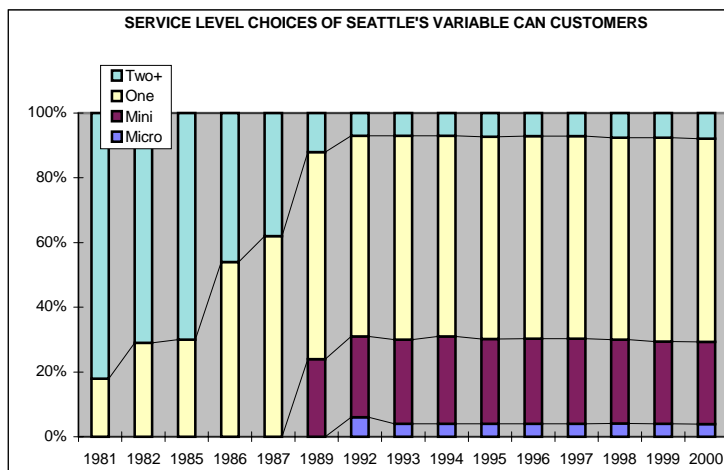
Report Date: February 15, 2002

Phone: (206) 684-4143

Total City Tonnage Breakdown

Self Haul Cars ¹ in December:	477 Tons	12.2% increase vs. same period in '00
Cumulative Self Haul Cars:	5,994 Tons	5.2% decrease vs. same period in '00
Self Haul Trucks in December:	6,349 Tons	1.7% decrease vs. same period in '00
Cumulative Self Haul Trucks:	95,487 Tons	0.1% decrease vs. same period in '00
Cumulative Self Haul Cars & Trucks:	101,481 Tons	0.4% decrease vs. same period in '00
Residential Collection in December:	11,857 Tons	3.5% increase vs. same period in '00
Cumulative Residential Collection:	144,559 Tons	0.9% decrease vs. same period in '00
Private Station ² Tons in December:	17,760 Tons	1.5% increase vs. same period in '00
Cumulative Private Station Tons:	228,405 Tons	0.0% decrease vs. same period in '00
Total Tons Disposed In December:	36,443 Tons	1.7% increase vs. same period in '00
Cumulative Total Tons Disposed:	474,446 Tons	0.4% decrease vs. same period in '00

Selected Statistics for Residential Collection Service



Monthly Variable Can Rates:

Micro (12 gal)	\$10.05
Mini (19 gal)	\$12.35
One Can (32 gal)	\$16.10
Two Cans (64 gal)	\$32.15
Each Add'l Can	\$16.10

Residential Dumpster Service³ Most Common Monthly Rate

\$82.50 (+ \$.60 per unit)

Cumulative Residential Collection Tons through December 2001:

- North of the Ship Canal: 49,029 Tons
- South of the Ship Canal: 94,982 Tons

Recycling & Disposal Station Self Haul Garbage Rates⁴:

Cars: \$13.35 per trip Trucks: \$96.25 per ton (\$13.35 minimum)

- 1) Car tons calculated based on 333 pounds per car for 1999. Previous to 1999 car tons calculated using 433 pounds per car.
- 2) The private transfer stations handle the majority of Seattle's commercial tonnage. A portion of the tons going through the City-owned stations are commercial in origin. (An estimated 64% of the self haul truck tons are commercial according to a waste stream sampling study conducted in 1992.)
- 3) This is the rate for a one cubic yard container picked up once per week which is the most common dumpster service level. Residential dumpster service rates vary based on the number and size of containers, the number of pickups per week, and the number of dwelling units.
- 4) New rates effective Dec. 31, 1999. In addition to new rates, vans & pickup trucks must now pay the per ton rate. This caused car tons to fall & truck tons to increase.

CITY OF SEATTLE GARBAGE TONNAGE 2000-2001

		CITY OWNED TRANSFER STATIONS (1)				PRIVATELY OWNED TRANSFER STATIONS (2)			Number of Containers by Station				
Year	Month	Self Haul	Self Haul	Residential	TOTAL	Eastmont (11)	Rabanco (12)	TOTAL	TOTAL TONS DISPOSED	CITY	CITY	EAST-	RAB-
		Cars(8)	Trucks(9)	Collctn(10,14)						NRDS	SRDS	MONT	ANCO
2000	1	528	6,850	11,970	19,348	7,373	11,039	18,412	37,760	453	273	130	489
2000	2	446	6,754	11,437	18,637	8,026	10,698	18,724	37,361	457	259	261	450
2000	3	504	7,881	12,657	21,042	7,834	11,812	19,646	40,688	497	277	424	505
2000	4	567	8,144	10,869	19,579	6,789	10,586	17,375	36,954	324	456	301	395
2000	5	562	8,504	12,940	22,006	7,307	12,188	19,495	41,501	329	532	228	490
2000	6	574	8,583	12,830	21,987	8,092	12,097	20,189	42,176	317	538	351	422
2000	7	671	8,959	11,968	21,598	7,459	11,458	18,917	40,515	330	538	260	399
2000	8	597	9,149	13,127	22,872	8,005	11,904	19,909	42,781	351	510	310	458
2000	9	550	8,525	11,915	20,990	7,923	11,204	19,127	40,117	369	470	360	507
2000	10	495	8,148	12,213	20,856	8,058	12,008	20,066	40,922	342	471	373	439
2000	11	406	7,605	12,450	20,461	8,021	11,033	19,054	39,515	304	479	337	259
2000	12	425	6,457	11,457	18,338	6,835	10,668	17,503	35,841	300	401	274	222
2001	1	435	7,122	12,471	20,028	7,930	11,433	19,362	39,390	330	434	273	429
2001	2	370	6,558	10,170	17,098	6,570	10,176	16,746	33,844	284	372	297	366
2001	3	462	7,988	11,753	20,203	7,584	11,766	19,351	39,554	369	409	343	427
2001	4	507	7,939	11,387	19,833	6,988	12,514	19,502	39,336	344	410	249	446
2001	5	521	8,865	12,758	22,145	8,089	13,067	21,156	43,301	405	450	326	430
2001	6	550	8,743	12,139	21,432	7,096	12,718	19,813	41,245	378	436	314	435
2001	7	617	9,018	12,449	22,084	6,596	13,153	19,749	41,834	391	470	232	457
2001	8	594	9,430	12,989	23,014	6,698	13,047	19,745	42,759	396	484	248	468
2001	9	578	8,583	11,101	20,262	5,685	11,368	17,053	37,314	356	444	129	410
2001	10	430	7,955	12,497	20,882	7,035	12,835	19,870	40,752	358	459	88	471
2001	11	454	6,937	12,987	20,378	6,366	11,932	18,298	38,676	321	434	290	454
2001	12	477	6,349	11,857	18,683	5,836	11,924	17,760	36,443	307	380	185	429
Total 2001		5,994	95,487	144,559	246,040	82,472	145,933	228,405	474,446	4,239	5,182	2,974	5,222
Total 2000		6,323	95,560	145,832	247,715	91,722	136,695	228,417	476,132	4,373	5,204	3,609	5,035
Total 1999 (13)		6,989	97,378	147,718	252,085	85,952	139,396	225,348	477,433	6,031	3,625	3,435	4,743
Total 1998		16,883	81,136	145,934	243,953	80,217	133,429	213,646	457,598	5,777	3,529	2,811	5,201
Total 1997		15,750	81,396	147,972	245,117	79,053	129,617	208,670	453,787	5,648	3,354	2,986	5,067
Total 1996		13,777	70,091	144,289	228,157	71,448	123,521	194,969	423,127	5,241	3,198	2,515	4,792
Total 1995		13,279	71,208	146,226	230,713	75,581	121,121	196,702	427,415	5,001	3,367	3,207	4,649
Total 1994		13,064	74,291	150,066	237,420	75,144	119,623	194,767	432,187	5,436	3,404	3,141	4,759
Total 1993		8,665	76,853	144,127	229,645	73,915	126,676	200,591	430,236	5,450	3,501	2,811	4,800
Total 1992		8,178	80,742	142,154	231,074	68,742	125,596	194,338	425,412	5,191	3,427	2,580	4,856
Total 1991		7,947	68,576	140,722	217,245	74,389	147,868	222,257	439,502	3,060	2,300	2,096	3,647
Total 1990 (3)		7,253	73,939	140,528	221,720	78,461	157,664	236,125	457,845	NA	NA	NA	NA
Total 1989 (4,5)		6,919	58,720	143,221	208,860	75,513	121,029	196,542	405,402	NA	NA	NA	NA
Total 1988 (6)		11,810	75,557	179,966	267,333	72,680	125,494	198,174	465,507	NA	NA	NA	NA
Total 1987 (7)		13,622	88,147	188,800	290,569	55,212	170,703	225,915	516,484	NA	NA	NA	NA
Total 1986		25,278	105,442	190,584	321,304	50,947	151,189	202,136	523,440	NA	NA	NA	NA

(1) There are two city owned recycling and disposal stations, one in the North end of the City (NRDS) and one in the South (SRDS).

(2) The private transfer stations handle the majority of Seattle's commercial tonnage. A portion of the tons going through the City-owned stations are commercial in origin. (An estimated 64% of the self haul truck tons are commercial according to a waste sampling study conducted in 1992.)

(3) Wood Waste Program at city owned transfer stations began in January, 1990

(4) Apartment Recycling Program began in May, 1989

(5) Curbside Yard Waste Collection began in January, 1989

(6) Curbside Recycling Program began in February, 1988

(7) Yard Waste "Clean Green" Program began in August, 1987

(8) Car weight estimate for 1994/95 based on 290 pounds per car.

Car weight estimate for 1998 based on 433 pounds per car.

Car weight estimate for 1999 based on 333 pounds per car

(9) 3,220 tons of residuals from the yard waste program were returned to SRDS in 1995 but not weighed in. These have been added in as self haul truck tons.

(10) Apr1994 USD diverted 2043.49 to 3rd&Ldr due to Amfab down @STS;

572 tons of residential waste were taken to Rabanco Oct - Dec of 1995 due to container shortages and operating hour changes. 962 tons were taken from Jan - Mar 1996.

In 1997, 15 USD tons were diverted to Rabanco on 6/25. In October 1998, 2,230 tons were diverted to Rabanco, due to compactor maintenance at NRDS. Aug 2000 includes 892 diverted tons in residential collection(8/14-15/00; 236.27 tons WM 655.73 USD) December 7 & 11, 2000 132 tons from NTS to Eastmont & 213 tons from STS to Rabanco.

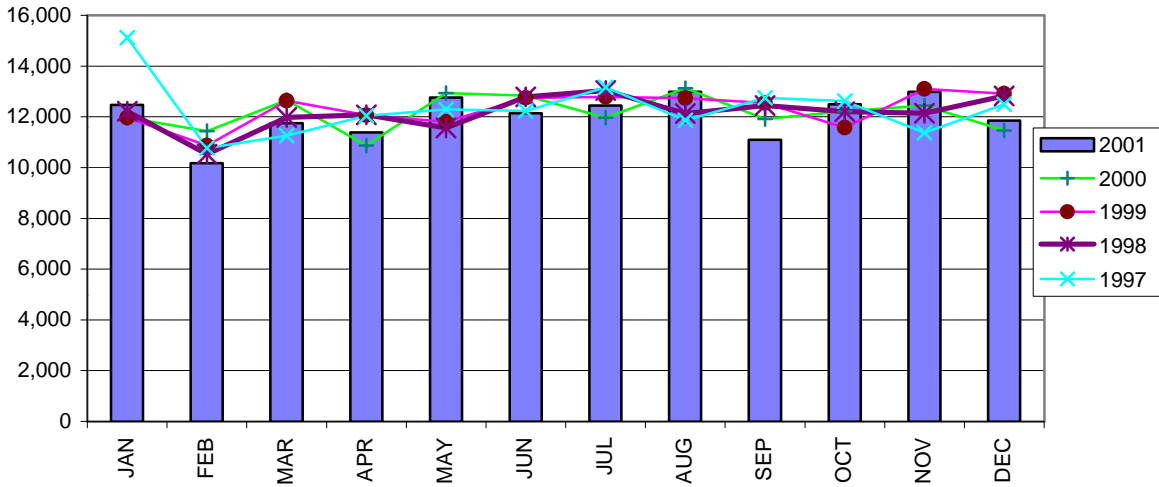
(11) Eastmont figures are "incoming" tons as reported by WM (Rabanco's tons are "incoming" beginning 1/1/1999).

(12) 158 commercial tons were taken to Klickitat from Rabanco in May 96 due to container shortages. These tons have been added back in the above table.

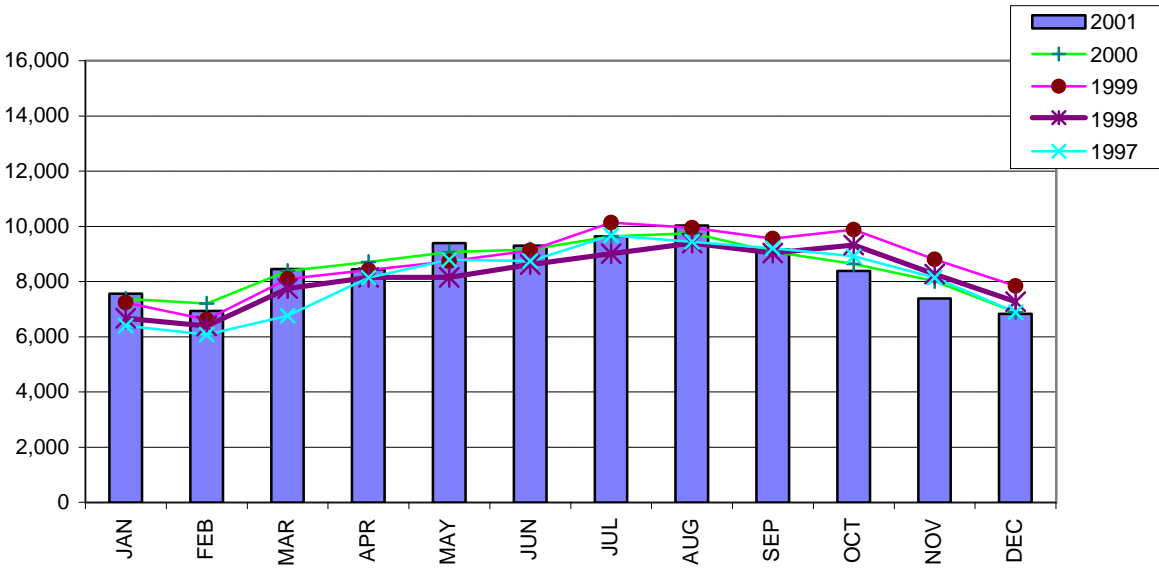
(13) Partly due to changes in rates. Per car fee increased from \$8.50 to \$13.00. Vans/pickup trucks are no longer considered as "car" rate & must pay the per ton rate as "trucks."

(14) Effective April 1,2000, Waste Mgt can collect garbage & yard waste in the same truck Co-collected tons are estimated to be 60% garbage & is acctd for in residential collection

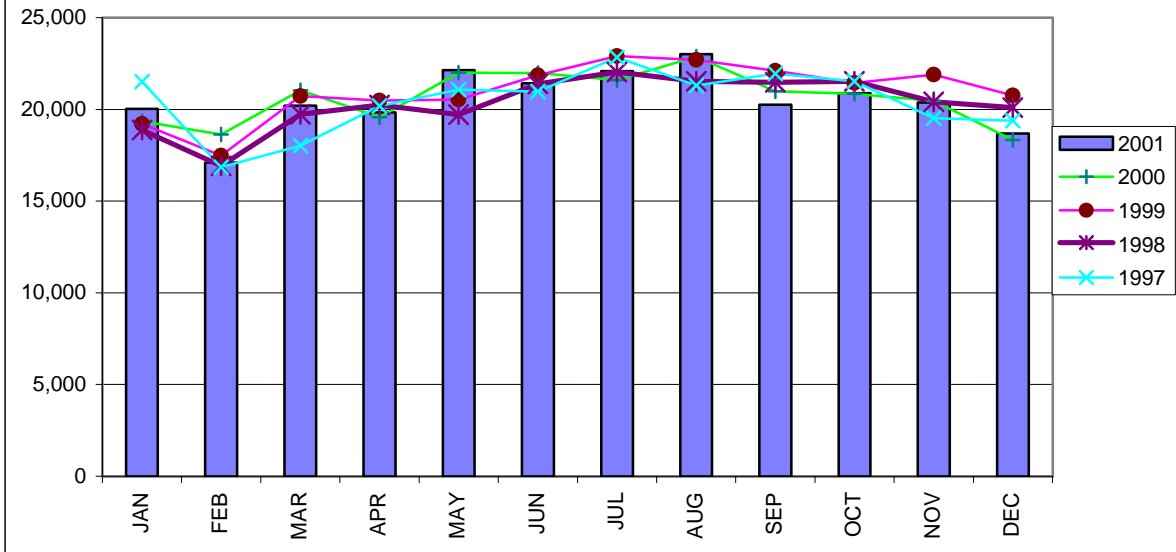
RESIDENTIAL COLLECTION Total City Tons



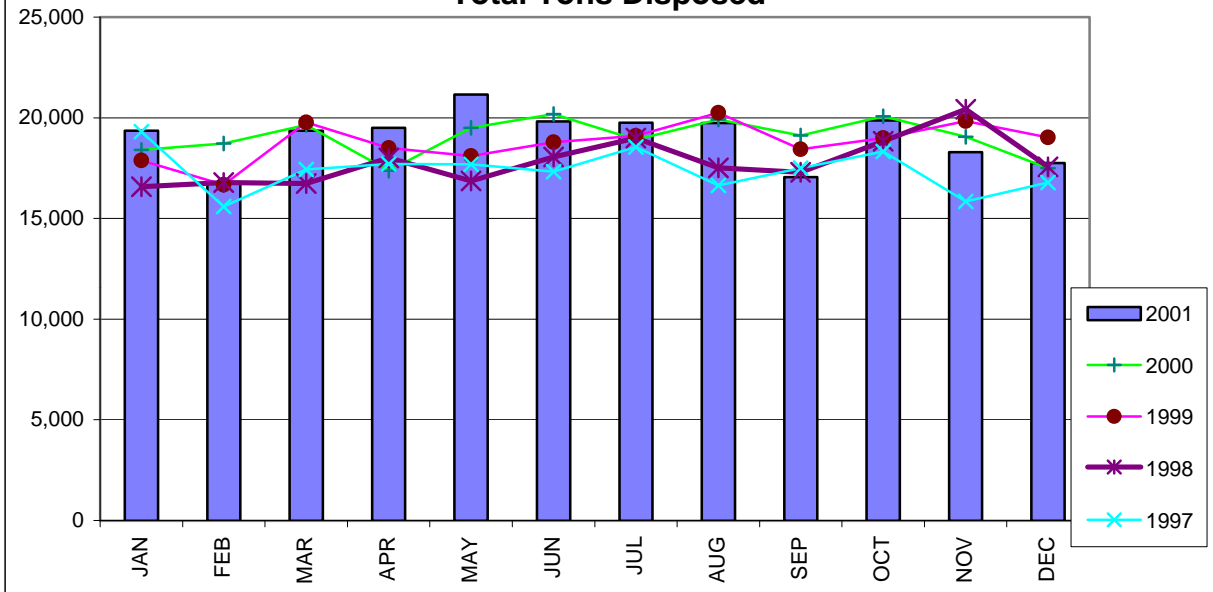
SELF HAUL TO CITY OWNED STATIONS Self Haul Cars and Trucks



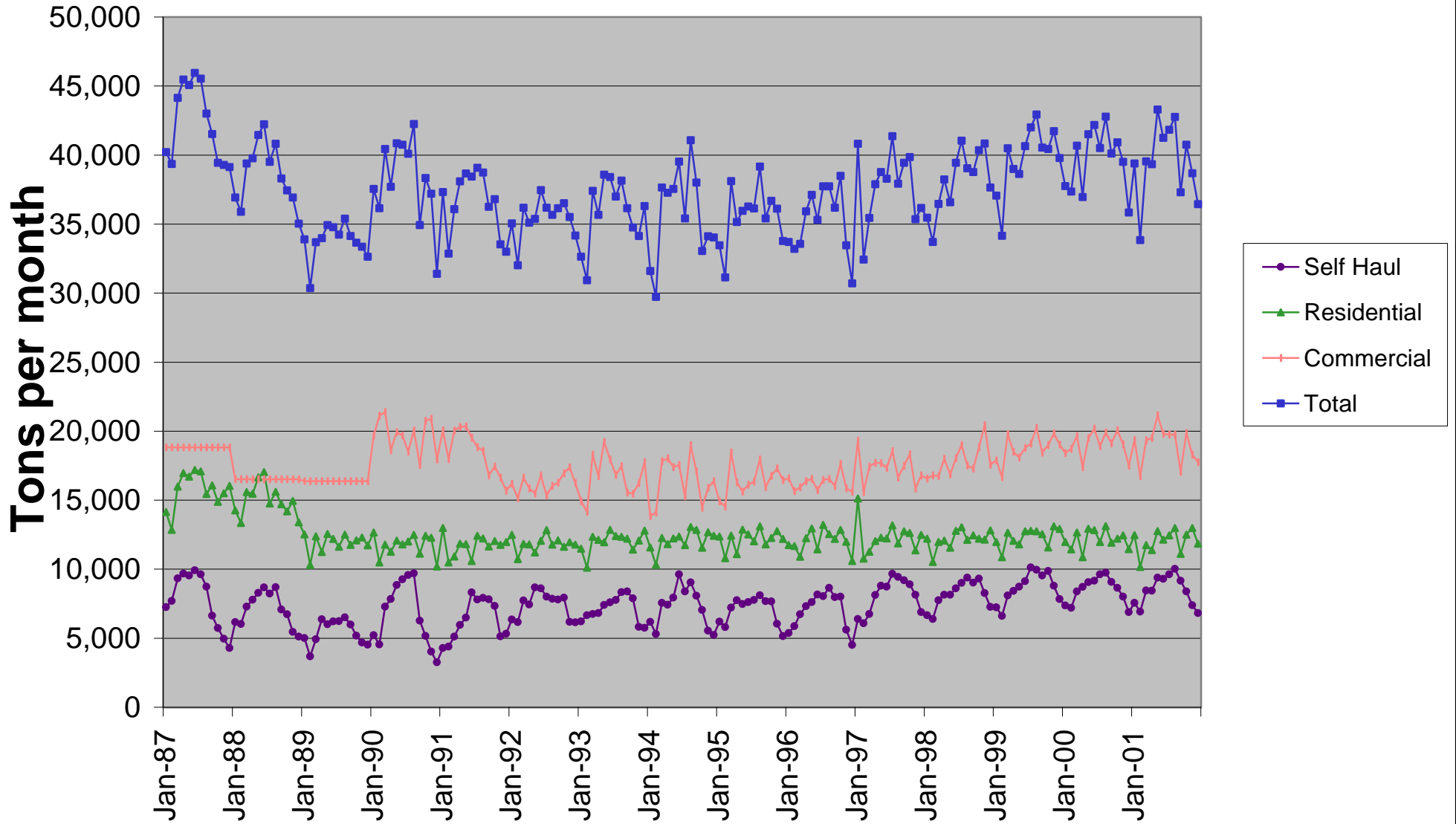
CITY OWNED STATIONS Total Tons Disposed



PRIVATELY OWNED STATIONS Total Tons Disposed



City of Seattle Garbage Disposal



Monthly commercial tonnage for 1987-1989 estimated from annual data.