

# Project Delivery & Engineering Branch Construction Management Division

## Customer Review Panel

February 8, 2021



# Construction Management Dashboard

2020				Total Projects	Total Costs
Capital Improvement Projects (CIPs)	DWW 64% (7 projects)	Water 36% (4 Projects)	Solid Waste 1% (1 project)	12	\$31,700,000
CIP Emergency Projects	Emergency DWW 91% (6 Projects)		Emergency Water 9% (2 Projects)	8	\$ 8,500,000
Major Interagency Projects (MIPs)	MIPs (7 Projects)	Private Development (34 Projects)		41	N/A
2019				Total Projects	Total Costs
Capital Improvement Projects (CIPs)	Water 7% (2 Projects)	DWW 15% (10 Projects)	Solid Waste 78% (2 Projects)	14	\$97,900,000
CIP Emergency Projects	Emergency DWW 53% (8 projects)		Emergency Water 47% (1 Project)	9	\$ 4,000,000
Major Interagency Projects (MIPs)	MIPs (5 Projects)	Private Development (29 Projects)		34	N/A
2018				Total Projects	Total Costs
Capital Improvement Projects (CIPs)	DWW 25% (5 Projects)	Water 75% (5 Projects)		10	\$14,000,000
CIP Emergency Projects	Emergency DWW 89% (7 Projects)		Emergency Water 11% (1 Project)	8	\$ 3,200,000
Major Interagency Projects (MIPs)	MIPs (2 Projects)	Private Development (22 Projects)		24	N/A

# SPU Construction Current State

- COVID-19 (Personal Protect Equipment) PPE Kits prepared for all CMD Field Staff
- Contractors' Health and Safety Plans reviewed on three separate occasions within 48-hours
- Development of One City COVID-19 Contact Tracing for Contractors

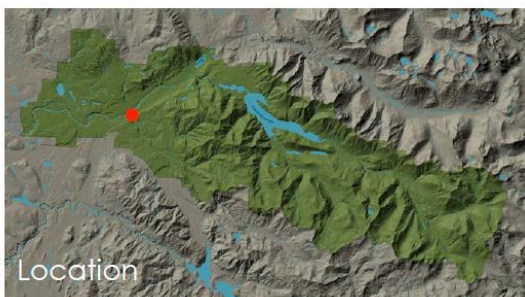


# 2020 Milestone Achievements

Seattle Southeastern Railway Removal at Cedar River Watershed

Before: 340-foot creosote timber trestle

After: Floodplain Restored



Construction Cost: \$1.04M

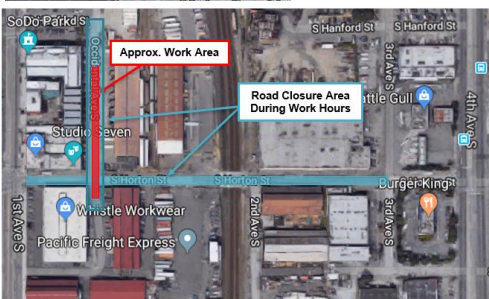
Completed: Sept. 2020

# 2020 Milestone Achievements

## Sanitary Sewer Full Line Replacement



1<sup>st</sup> Avenue South – 350' of 12" diameter



Occidental Ave South – 335' of 12" diameter



Construction Cost: \$2.2M

Completed: Sept. 2020

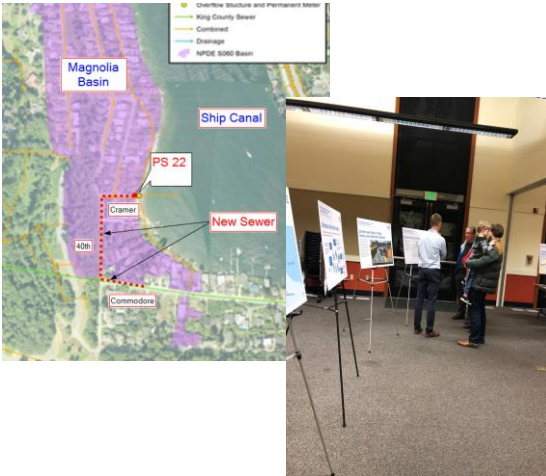
# 2020 Milestone Achievements

## Magnolia Pump Station 22 Retrofit & Forcemain Replacement Project

*SPU has provided an inviting public space which will be enjoyed for decades to come. We especially appreciate the salmon art, benches, and landscaping. FOSE hopes that these elements will be incorporated in similar shoreline projects throughout the City. - Karen Daubert, Friends of Street Ends*

Before: Cramer Street End – Closed Access

After: Cramer Street End Open for Public Use



Construction Cost: \$6.2M  
Alternative tank option was additional \$3M  
Completed: Oct. 2020

**Trivia:** The City designated specific public streets in Seattle that end on waterfronts as special rights of way to be preserved and improved for public use. How many public street ends fall into this category?

# Construction Future State

- No expected SPU slowdown of upcoming CIPs in 2021
- Anticipate 5 new CIP Community Work Force Agreements for Priority Hire
- Development of new One City 360 Contractor Performance Reviews



**Trivia:** The City created a Priority Hire program to promote construction careers for women, people of color, and others with social and economic disadvantages. City Ordinance #124690 executes Priority Hire program requirements when public works construction projects exceed what dollar threshold?

# Questions?

**Contact Info:** Jerry Waldron\*, PE, PMP  
SPU Interim Construction Management Director  
[Jerry.waldron@seattle.gov](mailto:Jerry.waldron@seattle.gov)

*\*No relation to new Seahawks Offensive Coordinator*

