

# Water Supply Update

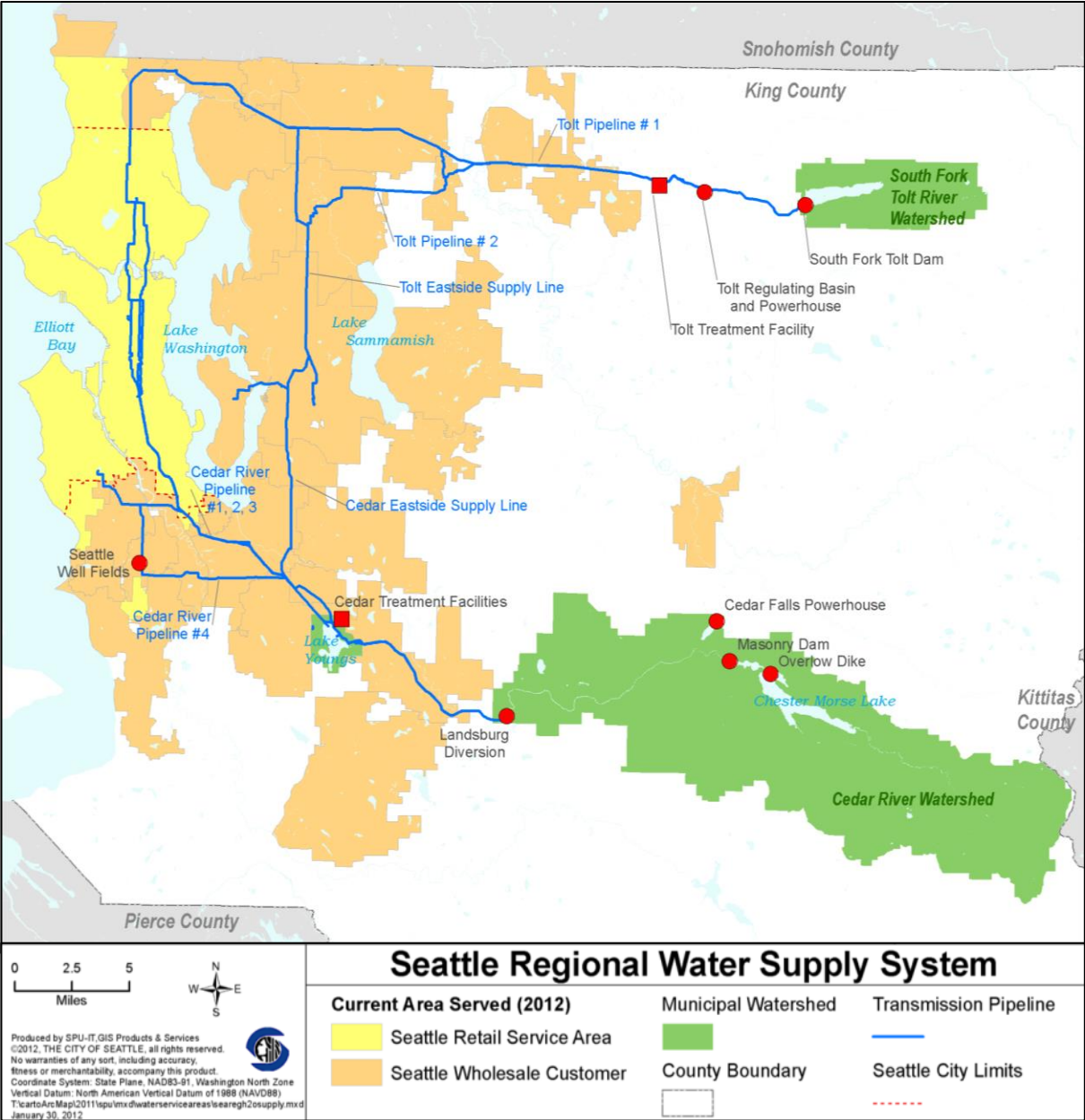
# Agenda

- Water Supply Status
- Statewide Drought Declaration

# Seattle Water Facts

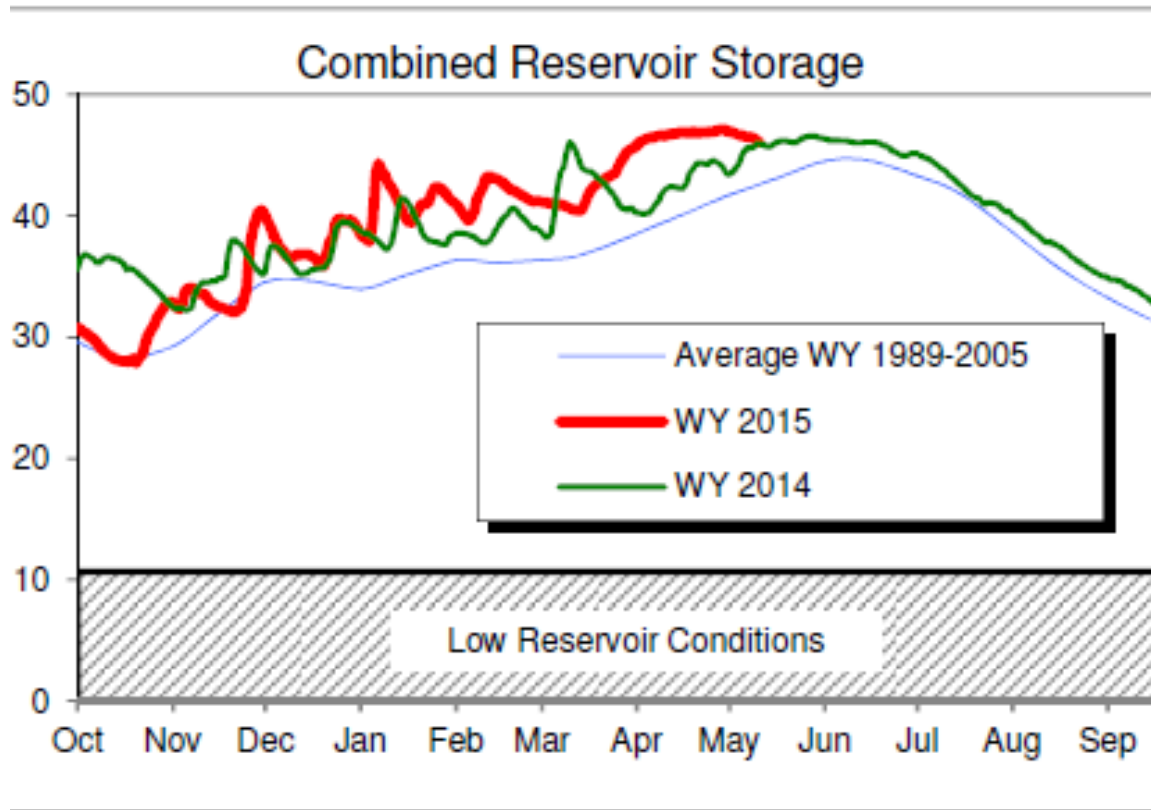
- Population Supplied – 1.3 million
- Average Annual Demand – 115 million gallons per day
- Peak Day Demand – 200 million gallons per day
- Sources: Two Protected Watersheds, Cedar & SF Tolt
  - Chester Morse Lake & Masonry Pool, Masonry Dam, Cedar River
  - SF Tolt Reservoir, SF Tolt Dam, SF Tolt River
  - Wells provide backup supply

# Seattle Water System



# City of Seattle – Water Supply

- Current water supply outlook is good
- Filled reservoirs earlier than usual to make up for lack of snowpack
- Will capture additional spring rainfall runoff in reservoirs
- Projected water supply adequate to meet instream flow requirements while continuing to meet water supply needs for our customers
- Normal conservation measures
  - “Use water wisely as always; don’t use it differently than in any other year”



## As of May 11, 2015

Combined reservoir storage is 46.0 billion gallons, about 3.4 billion gallons above the long term average.

Current hydrologic modeling indicates that even in a very very dry year (2% Probability) Seattle will not reach low reservoir conditions. However, if we reach low reservoir conditions we still have over 10 billion gallons in additional storage.

# Statewide Drought Declaration

- SPU, Tacoma and Everett worked closely with state agencies on water supply status
- Statewide drought declaration May 15, 2015
  - NY Times coverage:

*“We’re seeing things happen at this time of year we just have never seen before” Mr. Inslee said in a news conference.*

*But he said that unlike other drought-stricken parts of the West, especially California, the problem here in the nation’s northwest corner falls primarily on agriculture and wildlife. **The large metropolitan water systems serving Seattle and other cities on the state’s western edge, where most people live, are largely in good shape...**”*