

SPU Drainage and Wastewater  
Artist in Residence  
2016

Vaughn Bell







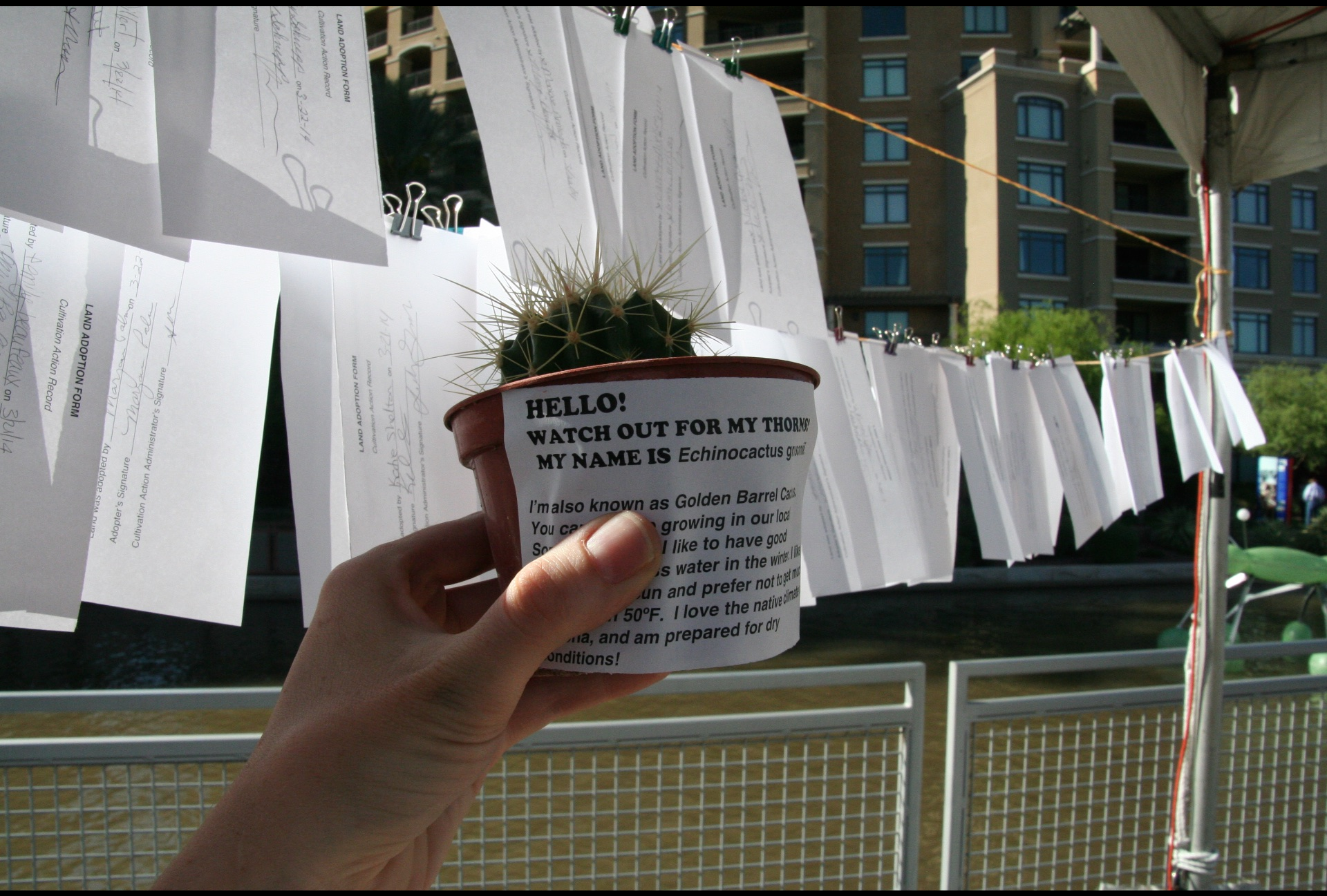
**LAND FOR**

**ADOPTION**









**HELLO!**  
**WATCH OUT FOR MY THORNEY**  
**MY NAME IS Echinocactus grusonii**

I'm also known as Golden Barrel Cactus.  
You can find me growing in our local area.  
So please, I like to have good drainage and lots of water in the winter. I like full sun and prefer not to get much rain. I like temperatures in the 50s and 60s°F. I love the native climate of my home state, and am prepared for dry conditions!

LAND ADOPTION FORM  
Cultivation Action Record

Adopted by *[Signature]* on 3-22-14

Signature

LAND ADOPTION FORM  
Cultivation Action Record

Adopted by *[Signature]* on 3-22-14

Signature

LAND ADOPTION FORM  
Cultivation Action Record

Adopted by *[Signature]* on 3-22-14

Signature


Adopted by *[Signature]* on 3-22-14

LAND ADOPTION FORM  
Cultivation Action Record

Adopted by *[Signature]* on 3-22-14

Signature



A close-up photograph of a hand holding a rectangular, translucent bar of soap. The soap is wet and has a light blue circular stamp on its top surface. The stamp contains the text "reflect light the Sound" and "send our C to salt and sea" in a blue, sans-serif font. The hand is positioned over a white sink, and water is splashing from a drain in the background. The lighting is bright, highlighting the texture of the soap and the skin of the hand.

reflect light the Sound  
send our C to salt and sea



both hand over hand  
time you swirl me

reflect into the corner  
send out C to soft area

**HOW TO RECEIVE A BAR OF SOAP:**

1. Where will your soap enter the waste stream? On the map find the location of the sink, shower or tub where you will take the soap, and mark it on the map with a dot.
2. How much soap will you use? Select one bar of soap from the pile of 600 bars, it is yours to take with you and use. One bar per household or classroom, please.
3. When the soap waters away (completely) you will be left with a small amount of soap water. This water will be sent to a treatment plant. The soap waters away (completely) you will be left with a small amount of soap water. This water will be sent to a treatment plant. The soap waters away (completely) you will be left with a small amount of soap water. This water will be sent to a treatment plant.



↑  
POINTS WEST



WEST POINT TREATMENT PLANT

BRIGHTWATER

↑  
POINTS EAST



# My job in SPU Drainage and Wastewater:

- Get to know the range of projects and programs related to the Plan to Protect Seattle's Waterways
- Talk to YOU- staff, community and stakeholders- about this work
- Consider diverse ways for art to be incorporated into SPU projects and programs through the 1% for art program
- Write a 15 year art master plan for 1% for art programs related to the Plan to Protect Seattle's Waterways
- Launch pilot art projects and other art projects related to this work

# City of Seattle's 1% for Art Program:

“The program integrates artworks and the ideas of artists into a variety of public settings, advancing Seattle's reputation as a cultural center for innovation and creativity.

The program specifies that 1% of eligible city capital improvement project funds be set aside for the commission, purchase and installation of artworks in a variety of settings. By providing opportunities for individuals to encounter art in parks, libraries, community centers, on roadways, bridges and other public venues, we simultaneously enrich citizens' daily lives and give voice to artists.”

# Report on Activities as Artist in Residence in Seattle Public Utilities

## Drainage and Wastewater

### February-April 2016



Vaughn Bell



# EXPLORATIONS and RESEARCH



underground facilities











Ship Canal Water Quality



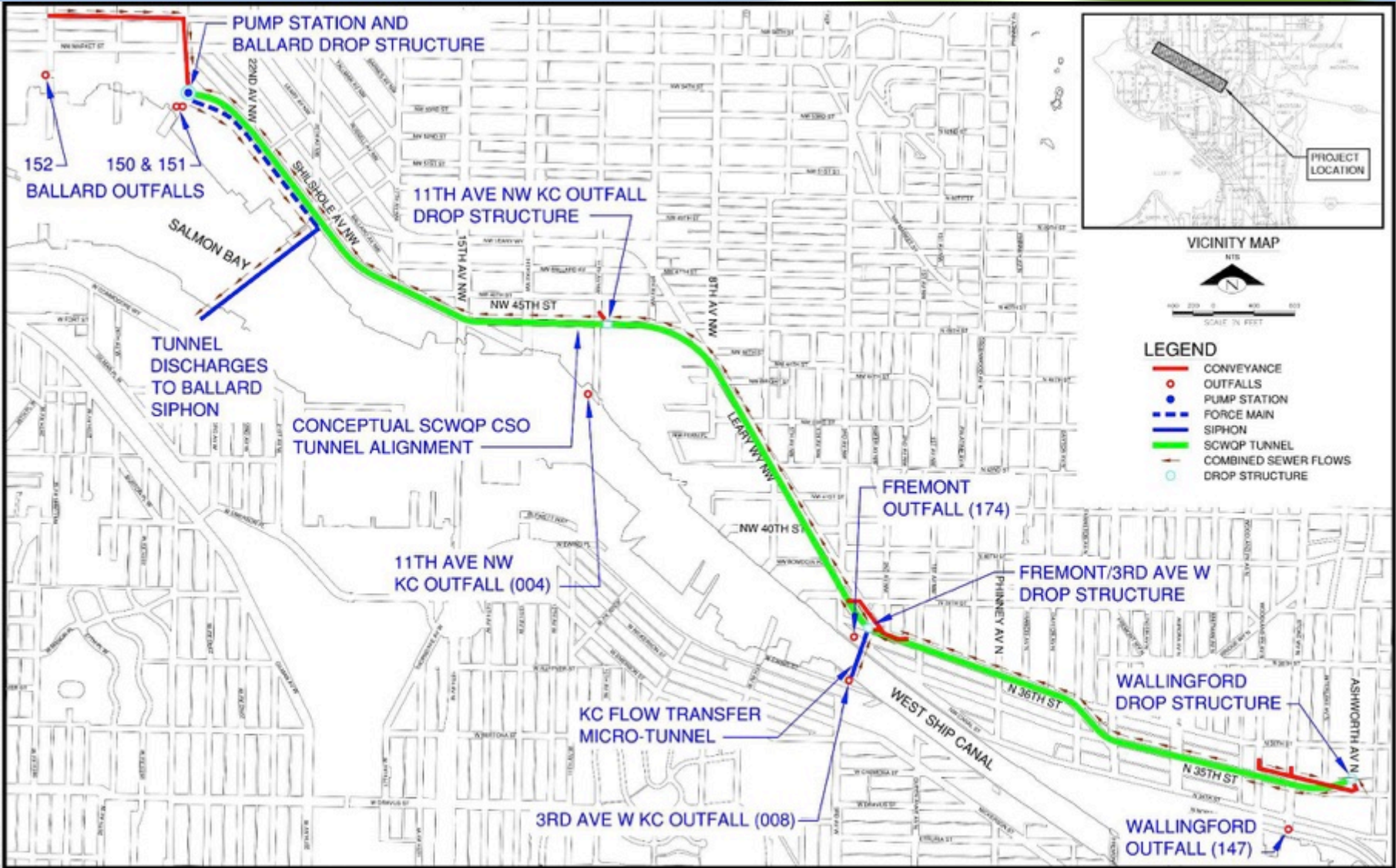












green  
stormwater  
infrastructure

















**WATER TREATMENT**

### What do our sanddrops pick up at

Water's ability to dissolve, carry, and the rapid flow are unique properties that support plants and create important economic and recreational opportunities for people. However, being off of roads, parks and beaches to great water quality is a challenge that we face every day. The number one water quality issue is not the amount of a pollutant, but the effort to reduce our pollution from urban runoff.

**NO NUTRIENTS**

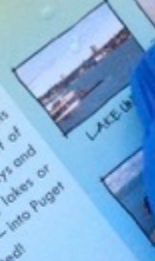
**BACTERIA**

Did you know Seattle receives an average of 100 inches of rain each year? That's more than 57 billion gallons of rainwater.



# Where do all the raindrops go that fall in your neighborhood?

No matter where you live, the land around you is part of a broad watershed, which collects rainwater and funnels it into a nearby water body. This means that whenever it rains, water that falls in your neighborhood flows off of rooftops, yards and roadways and into one of our streams, lakes or rivers and — ultimately — into Puget Sound. It's all connected!



0% covered by roads, rooftops & parking lots  
100% absorb water when it rains!



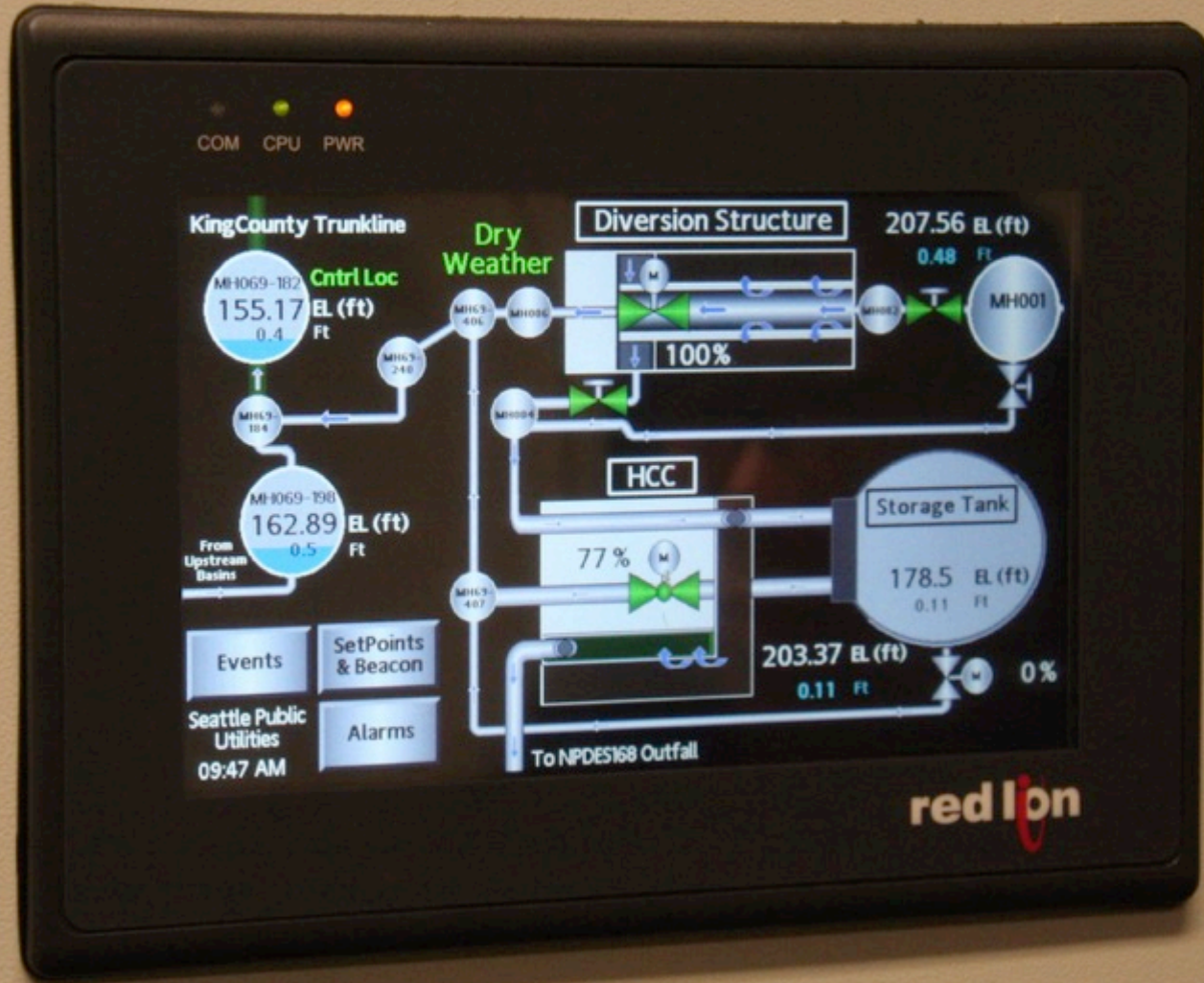
To learn more about watersheds and how you can help, visit [www.seattle.gov/duw](http://www.seattle.gov/duw) or call the DUW hotline at 206-388-7272.

Today, Seattle



creeks





data monitoring and complex systems



# EMERGING THEMES




*make the connection*



## BEYOND BINARIES

(NATURAL VS. ENGINEERED  
NATURE VS. HUMAN  
VALUED VS. IGNORED)



WEB OF CONNECTIONS-  
IT'S ALL ONE SYSTEM.

WE ALL LIVE DOWNSTREAM —

BUT SOME OF US LIVE FURTHER  
DOWNSTREAM THAN OTHERS.



IT'S OUR SHIT.

## Questions for you:

- What are key themes to explore through public art commissioned by DWW 1% for art funds?
- What aspects of the drainage and wastewater system and ecology may be especially inspiring to artists?
- Who else (stakeholders and community members) should be involved in the art planning process?
- What priorities do YOU have for SPU's public art?