

Accessible Mt. Baker

Project Timeline and Next Steps



2015

Accessible Mt. Baker Integrated Multimodal Plan

- complete planning study
- conduct public involvement

2016

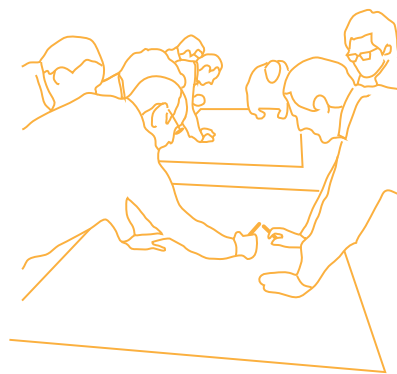
Align Move Seattle Levy Investment Project Timelines

- 23rd Avenue RapidRide
- Rainier/Jackson RapidRide
- pedestrian and bicycle improvements

Develop Funding Strategy

- local and external funding sources
- grant opportunities

2018



Traffic Analysis



Design/
Outreach

Project Design and Environmental Review

- initiate design and review
- brief City boards and committees
- conduct public involvement

Build Project

- work with businesses and community to reduce economic and mobility impacts during construction
- provide public updates

2021 Construction/
Rainier RapidRide Starts



CONTACT INFORMATION

Therese Casper, Project Manager
Therese.Casper@seattle.gov
(206) 684-8764

Dawn Schellenberg, Community Engagement Liaison
Dawn.Schellenberg@Seattle.gov
(206) 684-5189

www.seattle.gov/transportation/projects-and-programs/programs/transportation-planning/accessible-mt-baker

In 2015, we worked with neighbors and built on past plans to come up with a concept to reconfigure the intersection of Rainier Ave S and Martin Luther King, Jr. Way. We want to work with the community to transform the Mt. Baker station area into a safer and comfortable place for people to walk, bike, and make transit connections; and for the Mt. Baker Town

Center to take root and flourish. The concept below is a result of early efforts. In addition to prioritizing walking and biking, we want to maintain transit and freight reliability and create more predictable conditions for people driving. Over the next few years we'll do further traffic analysis, design the project and work on securing funding.

