

# Judkins Park Station Access Study



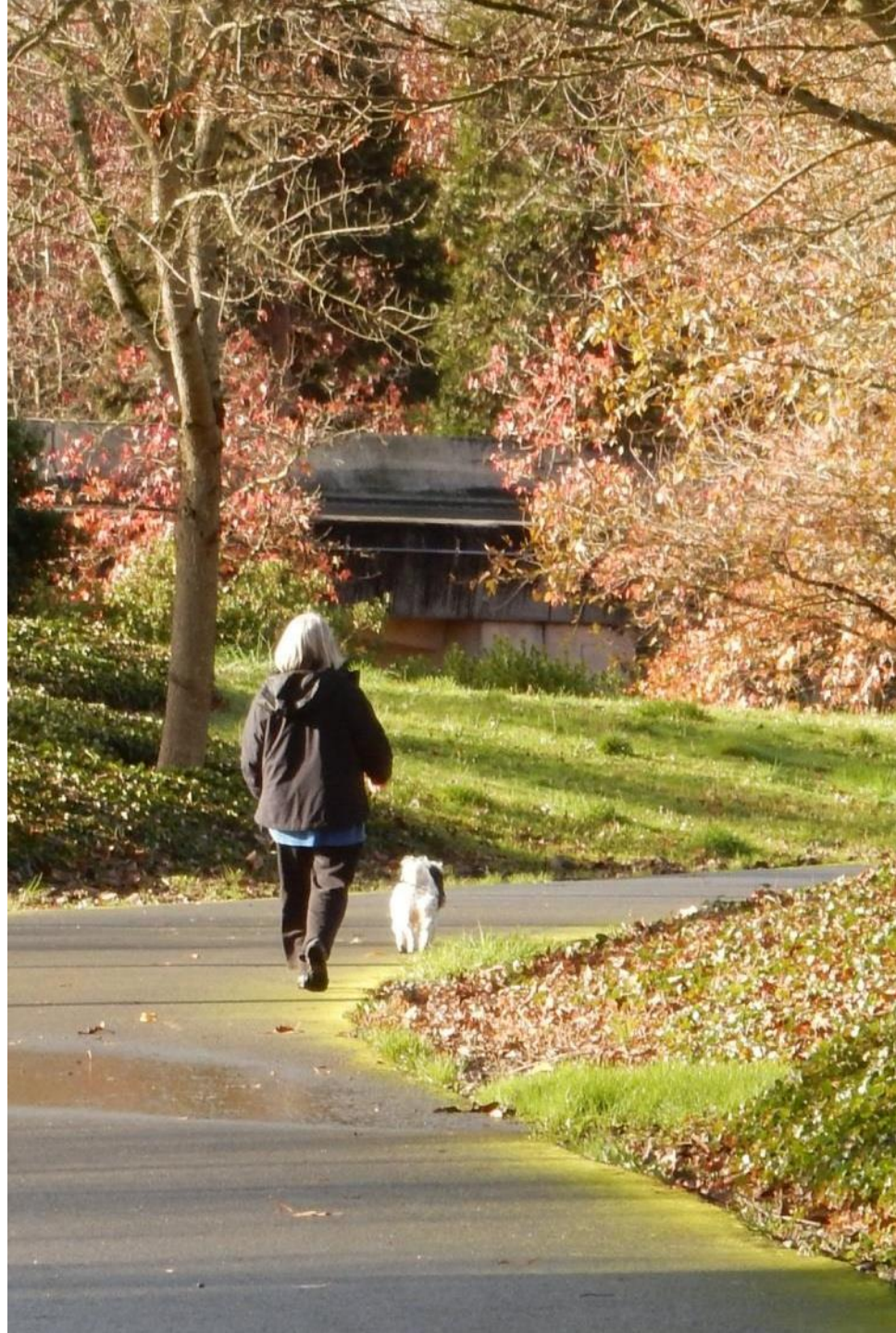
Final Workshop  
November 2, 2017



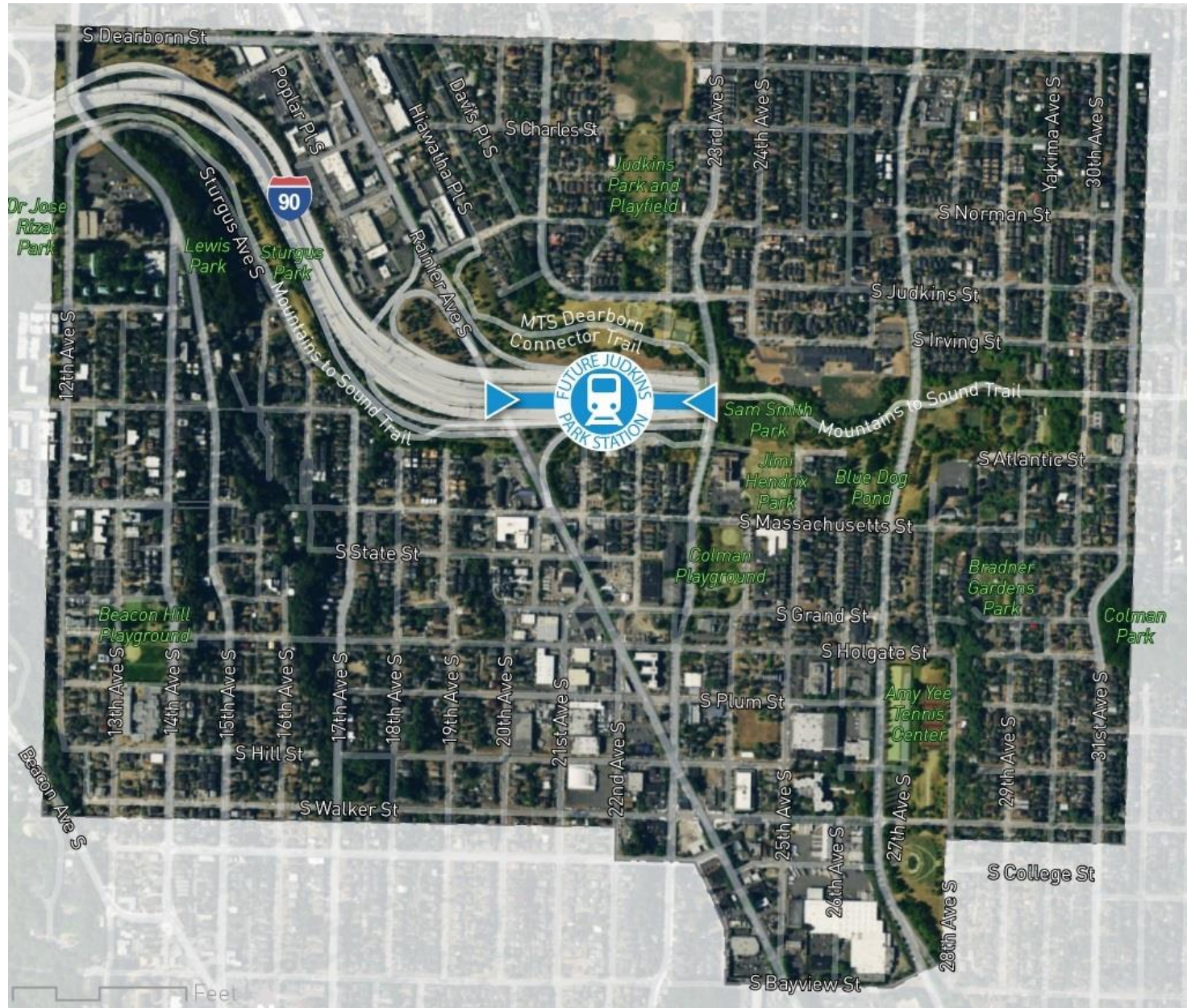
**Seattle**  
Department of  
Transportation

# Presentation overview

- Project background
- Outreach and engagement
- What we've heard
- Next steps



# Judkins Park station area



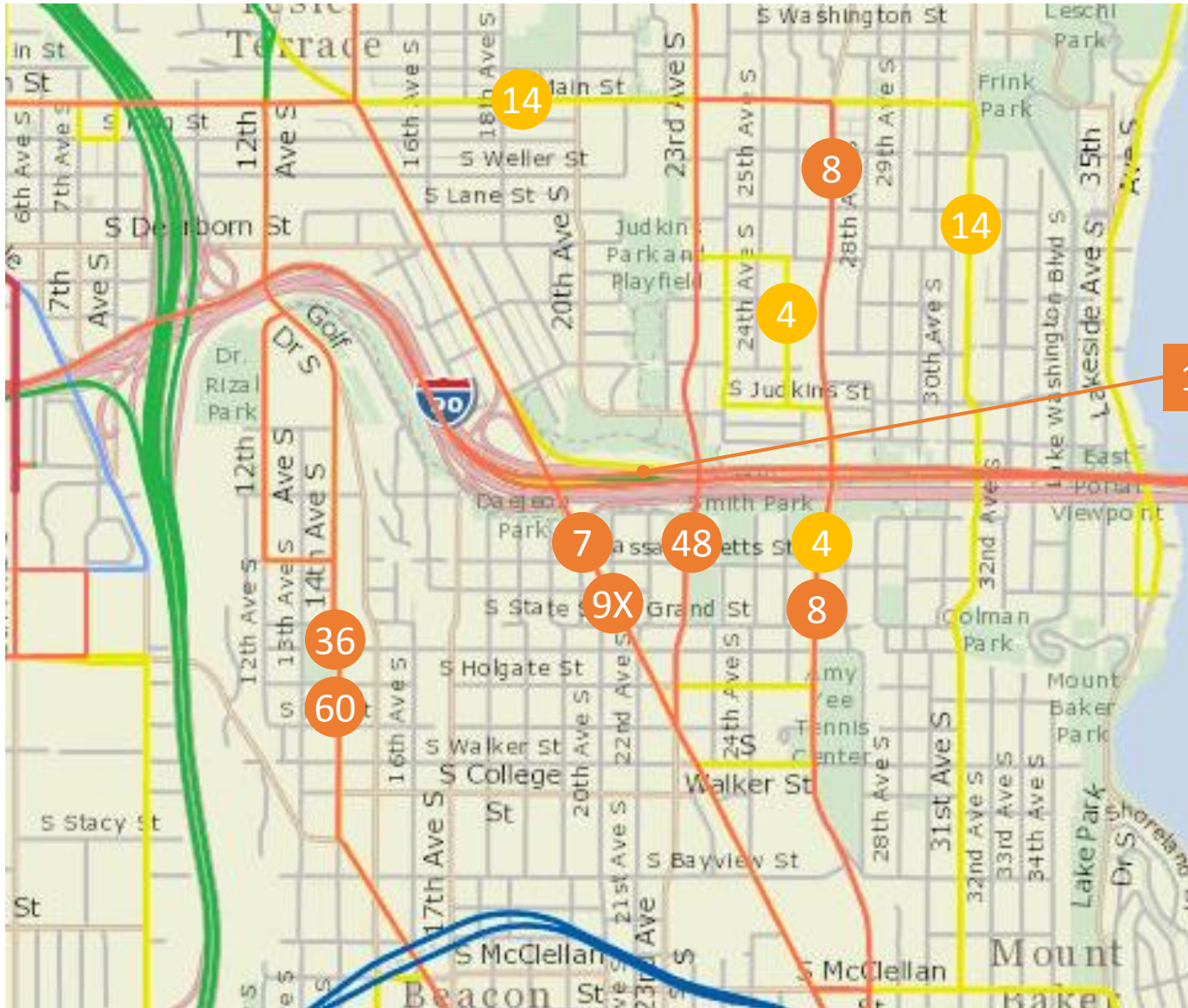
# Regional context

➡ Light rail

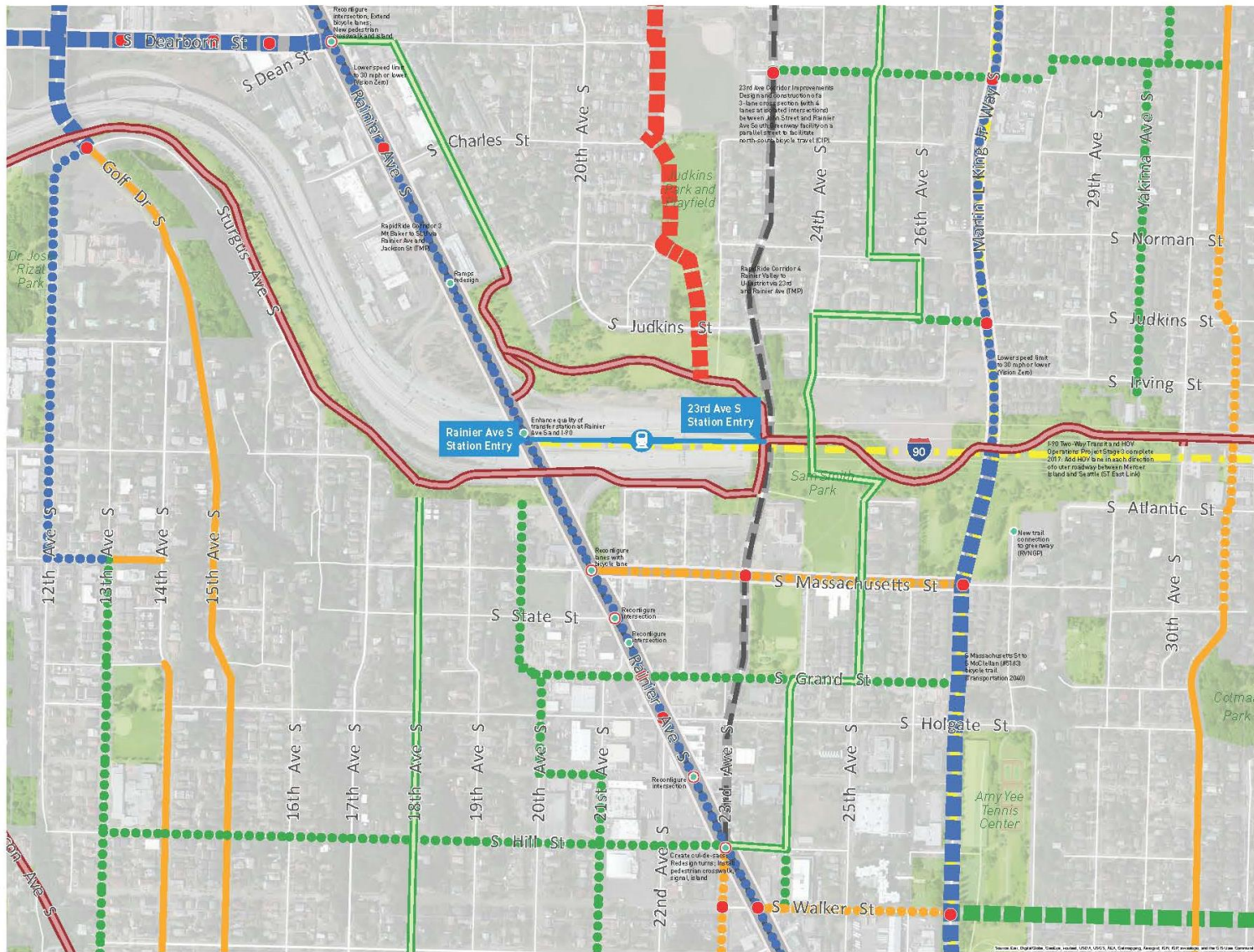
➡ Rapid Ride



# Transit service



# Transportation networks

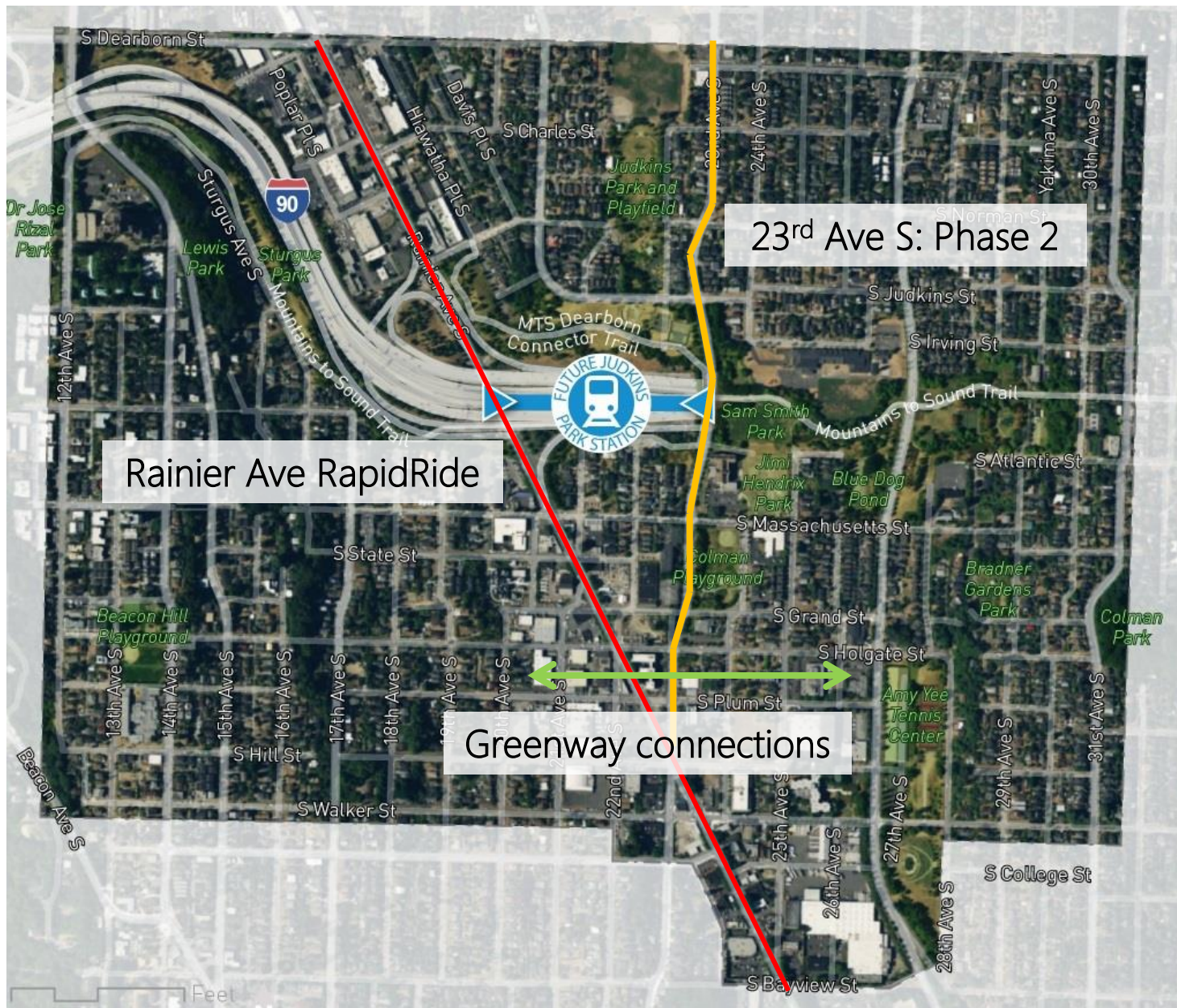


- EXISTING CONDITIONS**
- Multi-Use Trail
  - Neighborhood Greenway
  - In Street Minor Separation
  - Major freight route
  - Minor freight route
  - Challenging places for cyclists and/or pedestrians (from BPSA)
  - Park
- PLANNED TRANSPORTATION IMPROVEMENTS**
- Multi-Use Trail (prioritized for implementation)
  - Cycle Track (prioritized for implementation)
  - Cycle Track
  - Neighborhood Greenway (prioritized for implementation)
  - Neighborhood Greenway
  - In Street Minor Separation
  - RapidRide
  - 23rd Ave Corridor Improvements
  - Top Tier Across the Roadway Projects from the Pedestrian Master Plan
  - Improvement from Southeast Transportation Study (SETS) or Rainier Valley Neighborhood Greenway Plan (RVNGP)
  - Other planned improvement
- OTHER**
- Study area



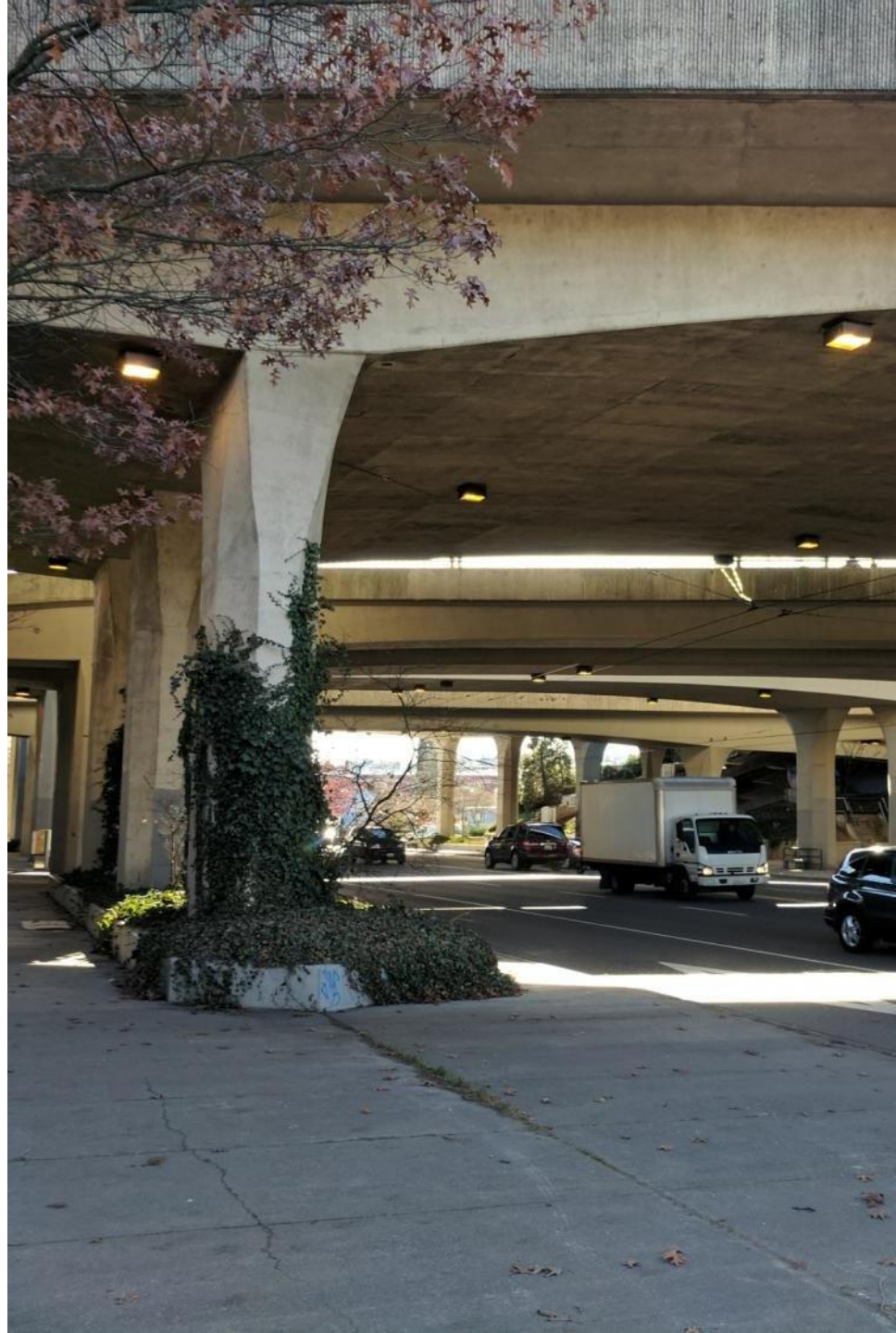
Source: Esri, DigitalGlobe, GeoEye, IGN, USDA, USDA, NGA, Esri, DeLorme, NAVTEQ, AeroGRID, IGN, Esri, Imagery, and the City of Seattle

# Related projects



# Project goals

- Safety
- Equity
- Accessibility
- Mobility
- Placemaking



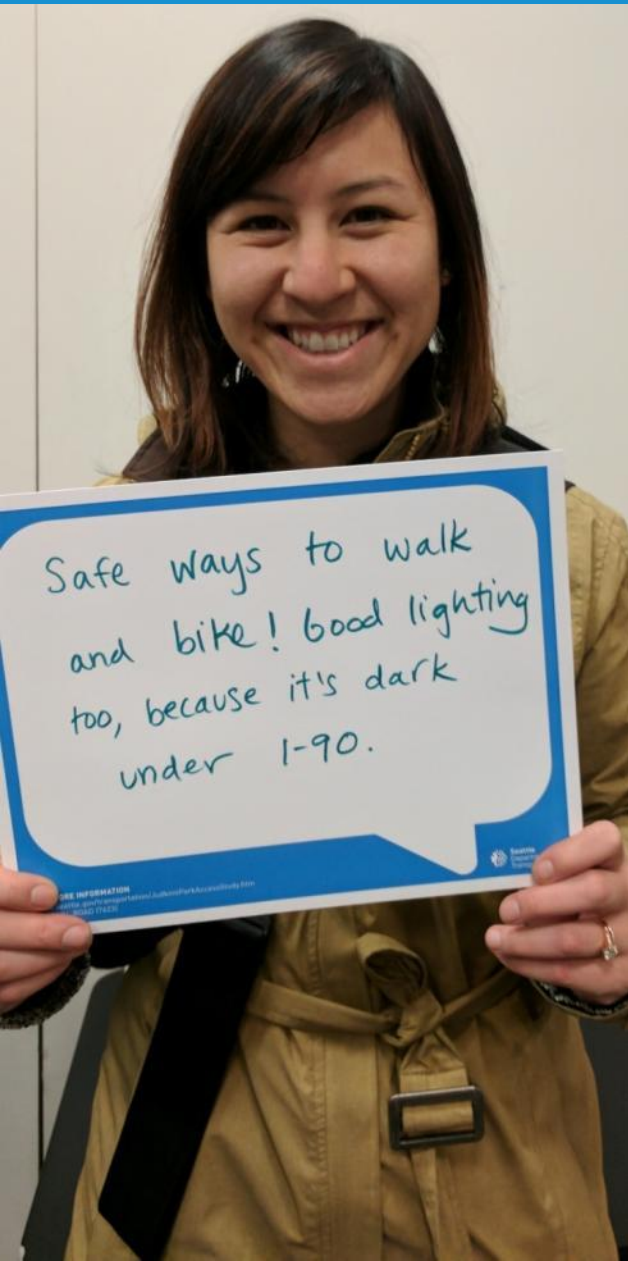


# Outreach and engagement

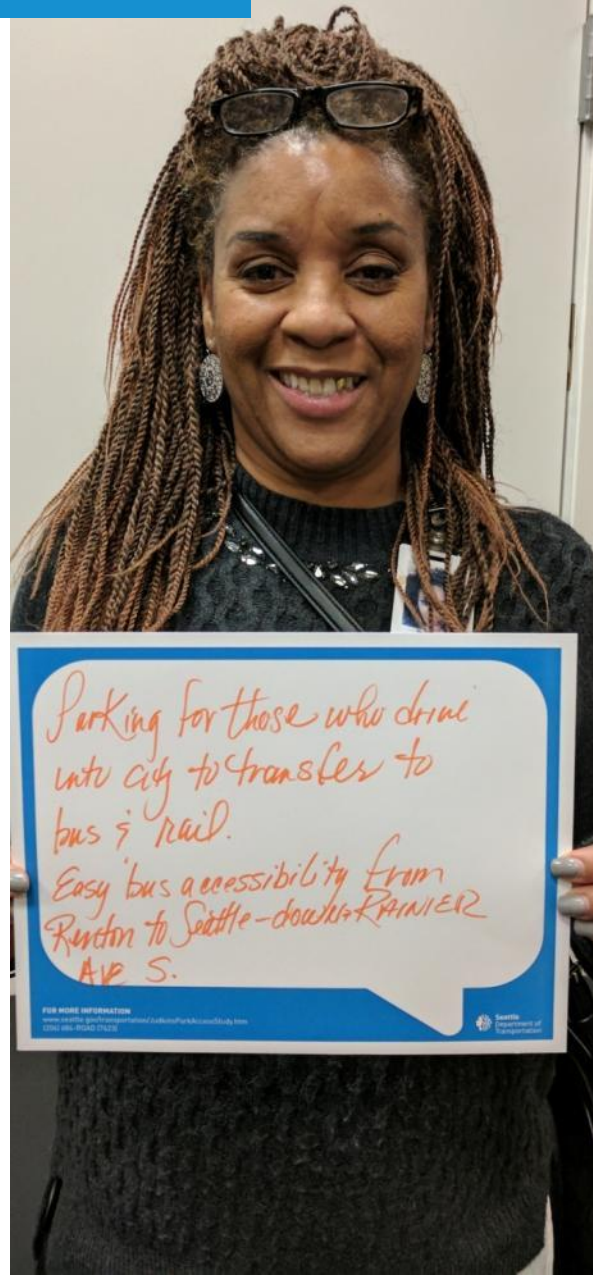
- 16 events; 3 upcoming
  - Workshops
  - Piggyback other events (SDOT, OPCD)
  - Resource fairs
  - Drop-ins
  - Lighthouse for the Blind focus group
  - Targeted meetings
- Online survey (238 respondents)
- Website and email



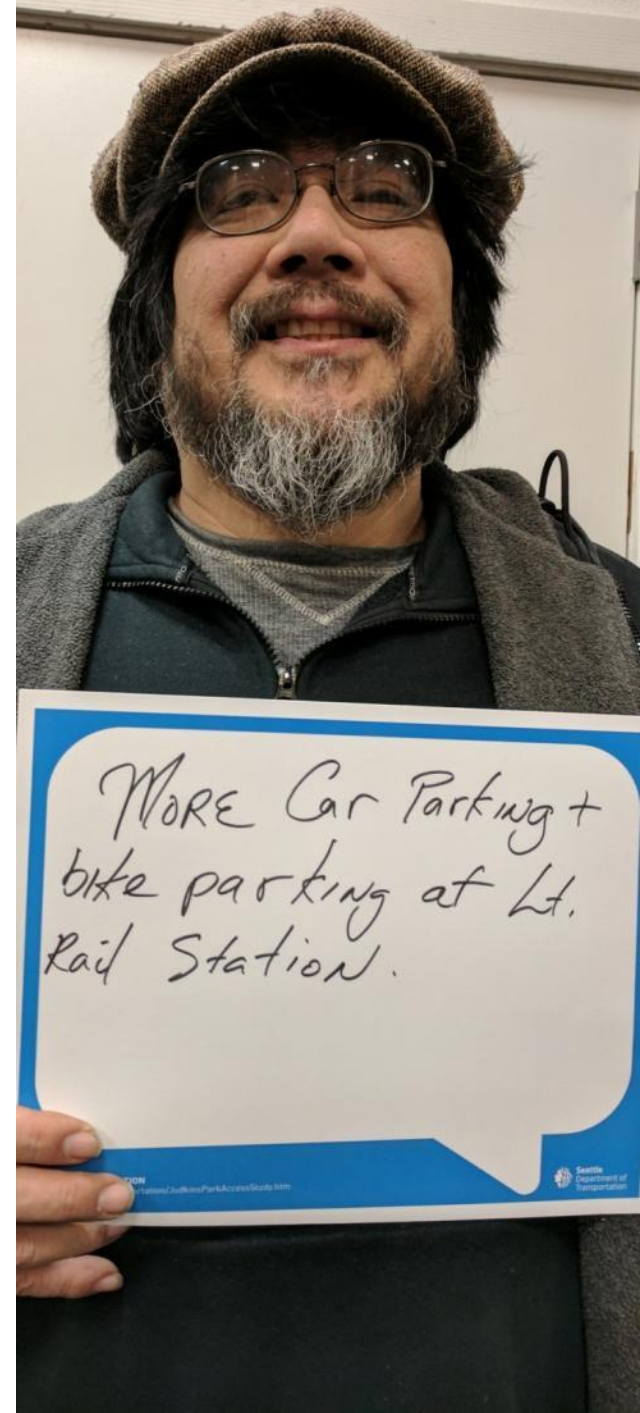
# What we've heard



Safe ways to walk  
and bike! Good lighting  
too, because it's dark  
under I-90.

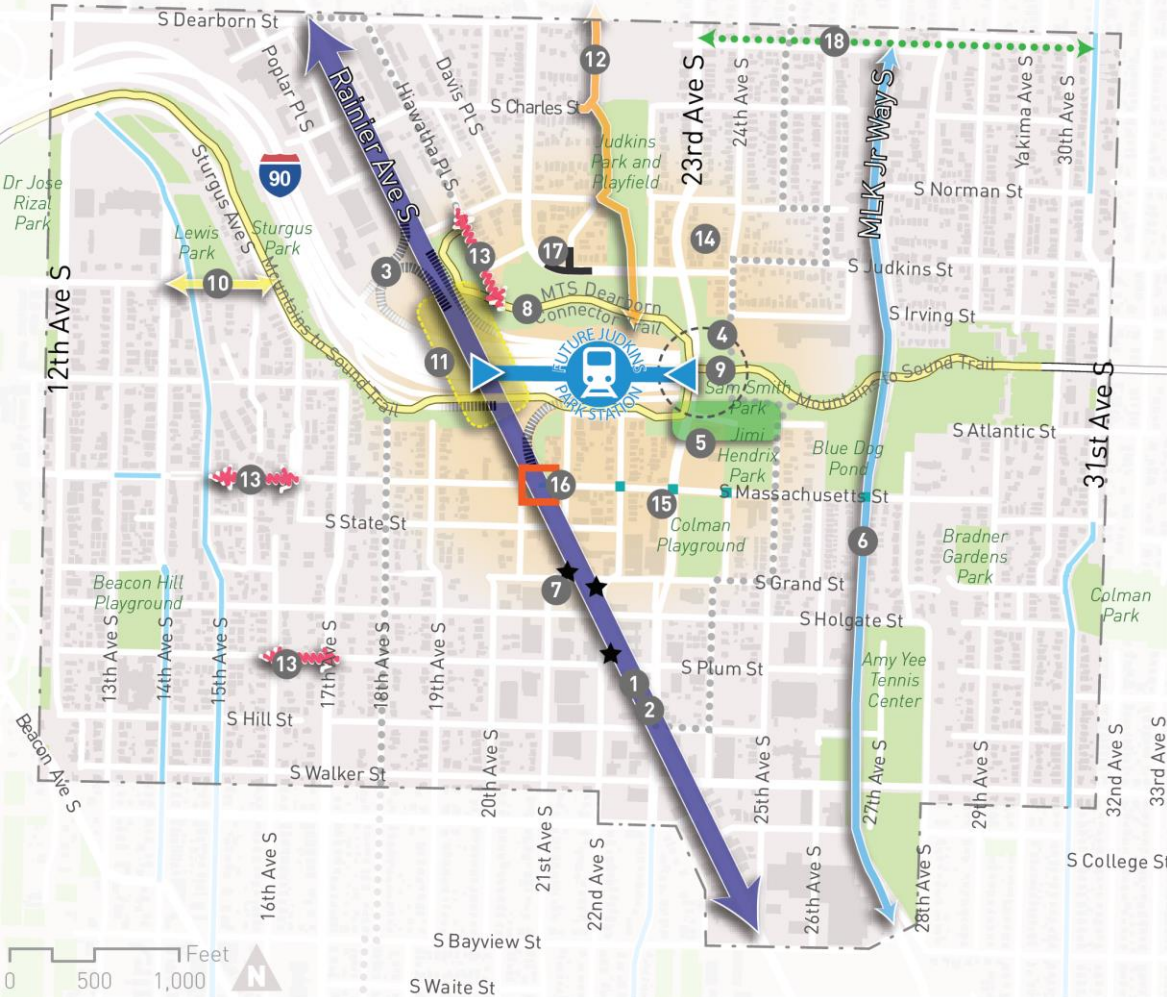


Parking for those who drive  
into city to transfer to  
bus & rail.  
Easy bus accessibility from  
Renton to Seattle-douglas PARKER  
AV S.



MORE Car Parking +  
bike parking at Lt.  
Rail Station.

# Transportation project ideas



## POTENTIAL LARGE CAPITAL PROJECTS

- 1 Identify intersection and sidewalk improvements to make it safer to walk on Rainier Ave S
- 2 Study how bicyclists could use Rainier Ave S (and connect to Broadway cycle track)
- 3 Improve I-90 on and off ramps for pedestrian and cyclist safety
- 4 Make it easy for all people to get to the station
- 5 Build a special street (like Bell St downtown or Roberto Maestas Festival St at Beacon Hill station)
- 6 Provide bike lanes (with a buffer) on Martin Luther King Jr Way S
- 7 Identify opportunities for special designs and safety improvements at the triangular blocks

## POTENTIAL LOW-/MID-COST INTERVENTIONS

- 8 Add lights to the Mountains-to-Sound (MTS) Trail and connector
- 9 Reduce pedestrian/bicycle conflicts on high volume segments of the MTS Trail
- 10 Improve the connection between the Lewis Park/PacMed area and the MTS Trail
- 11 Add coffee carts, etc. to make the I-90 underpass safer
- 12 Improve the Judkins Park Trail and its connection to Washington Middle School
- 13 Build stairs to walk across steep hillsides
- 14 Restrict nonresident parking in the station area
- 15 Install "accessible pedestrian signals" for all users to be safe and comfortable crossing the street
- 16 Improve the traffic light and intersection to reduce traffic congestion on Massachusetts St
- 17 Improve safety for drivers and walkers
- 18 Provide a "neighborhood greenway" (intersection and signage improvements to make it easier to bike and walk) on or near Dearborn to connect 23rd and 31st Aves S

## OTHER

- Future light rail station entry
- Existing bike lane
- Existing multi-use trail
- Existing neighborhood greenway

# Rainier Ave S projects

# Rainier Ave



# Bus stops and intersections



# Circuitous path



# 1 Rainier – pedestrian improvements



- Make crossings safer
- Improve sidewalk north of I-90 at trailhead
- Improve bus stop access and waiting areas
- Coordinate with RR
- Also see Projects 3, 7, and 11





# 2 Rainier – bicycle study

- Constrained road width for buses, freight, cars, and bicycles
- Divided opinions regarding bike lanes on Rainier Ave S
- Community desire for boulevard
- If not Rainier, what is route to Broadway?
- Coordinate with RR



# I-90 on and off ramp ped crossings



# Challenging crossings

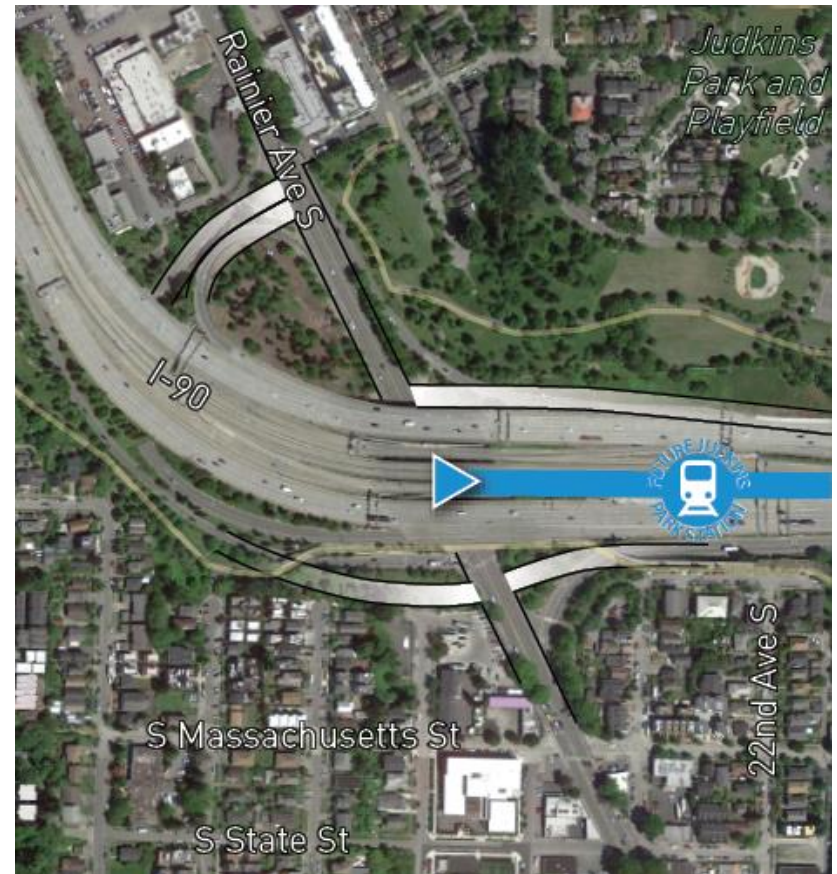


# Off ramp visibility



# 3 I-90 on and off ramps

- Short term: better mark crossings and calm traffic
- Long term: work with WSDOT to reconfigure intersections

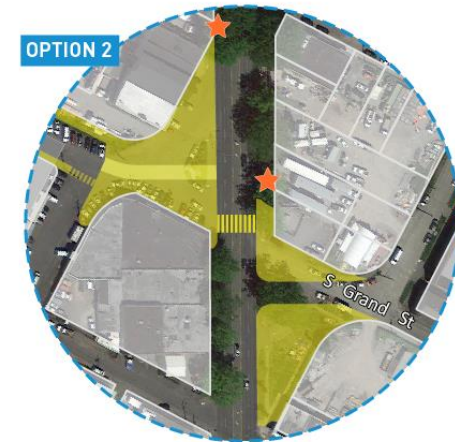


# Triangular blocks



# 7 Triangular blocks

- Reclaim unneeded, awkward streets for safer crossings, better bus stops, and more welcoming public spaces
- Coordinate with Rainier Ave S projects
- Include CAP Report recommendations in design



# Rainier Ave at I-90 underpass

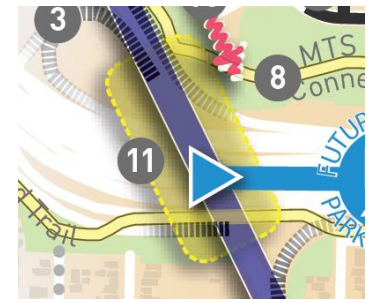




# Future Rainier Ave station entry



# 11 Activate underpass



- Encourage safe and active uses
- Design for safety and comfort



East entry/23<sup>rd</sup> Ave S project

# Bus stop near future east station entry



# Mountains to Sound Trail connection

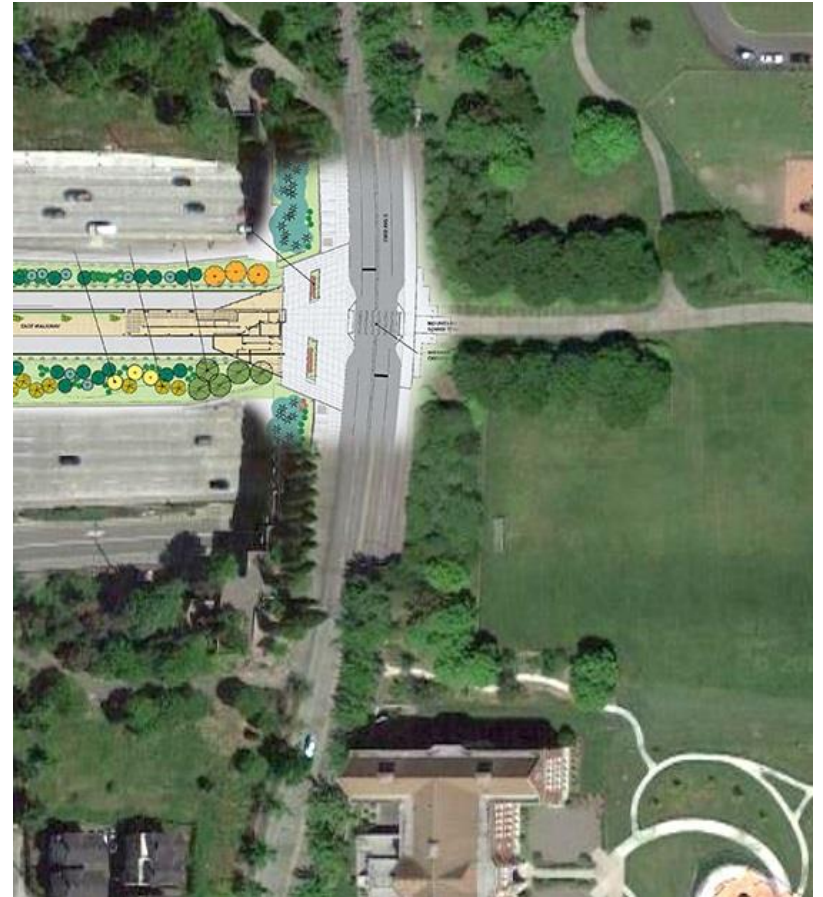


# Future station entry on 23<sup>rd</sup> Ave



# 4 East entry area

- Plan and design for pedestrians, cyclists, and pick-up/drop-off
- Coordinate with 23<sup>rd</sup> Ave project



# Next steps

<b>Date</b>	<b>Activity/action</b>
November 2	Final workshop
Early November	Additional community conversations, refine proposals
Mid-November	Develop draft report
December	Final report

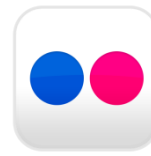


# Questions?

[JudkinsPark@seattle.gov](mailto:JudkinsPark@seattle.gov) | (206) 684-0633

[www.seattle.gov/transportation/JudkinsParkAccessStudy.htm](http://www.seattle.gov/transportation/JudkinsParkAccessStudy.htm)

[www.seattle.gov/transportation](http://www.seattle.gov/transportation)



**Seattle**  
Department of  
Transportation