

Madison Park

2013 Parking Study

Madison Park Community Council - March 3, 2014, Madison Park Beach Bath House

Why did you study our parking?

SDOT surveys on-street parking in business districts citywide every year. Parking availability and turnover in business districts are important for economic vitality.

We have heard parking concerns in the past from the Madison Park Community. In 2013, we had the opportunity to collect data in Madison Park.

What did you study?

Surveyors recorded parking occupancy and duration (length of parking stay) for around 220 time limited spaces and 340 unrestricted spaces. Data were collected on Tuesday, April 9, 2013 between 8:00 AM and 8:00 PM and Tuesday, July 9, 2013 between 8:00 AM and 11:00 PM.

What did you learn?

Spring data:

- Daytime occupancy peaks at around 78% in time limited and unrestricted spaces
- 80% of parking sessions in time limited areas (1-4 hours) are 0-2 hours

Summer data:

- Daytime occupancy peaks at around 92% in time limited and 80% in unrestricted spaces
- 78% of parking sessions in time limited areas (1-4 hours) are 0-2 hours
- Parking occupancy drops after 8:00 PM

What does this all mean?

-General parking goals in commercial areas are (1) 70% to 85% occupancy and (2) adherence to posted time limits

-In Madison Park, occupancy is slightly above a general occupancy target in the summer, but there is some parking availability and existing time limits are creating turnover

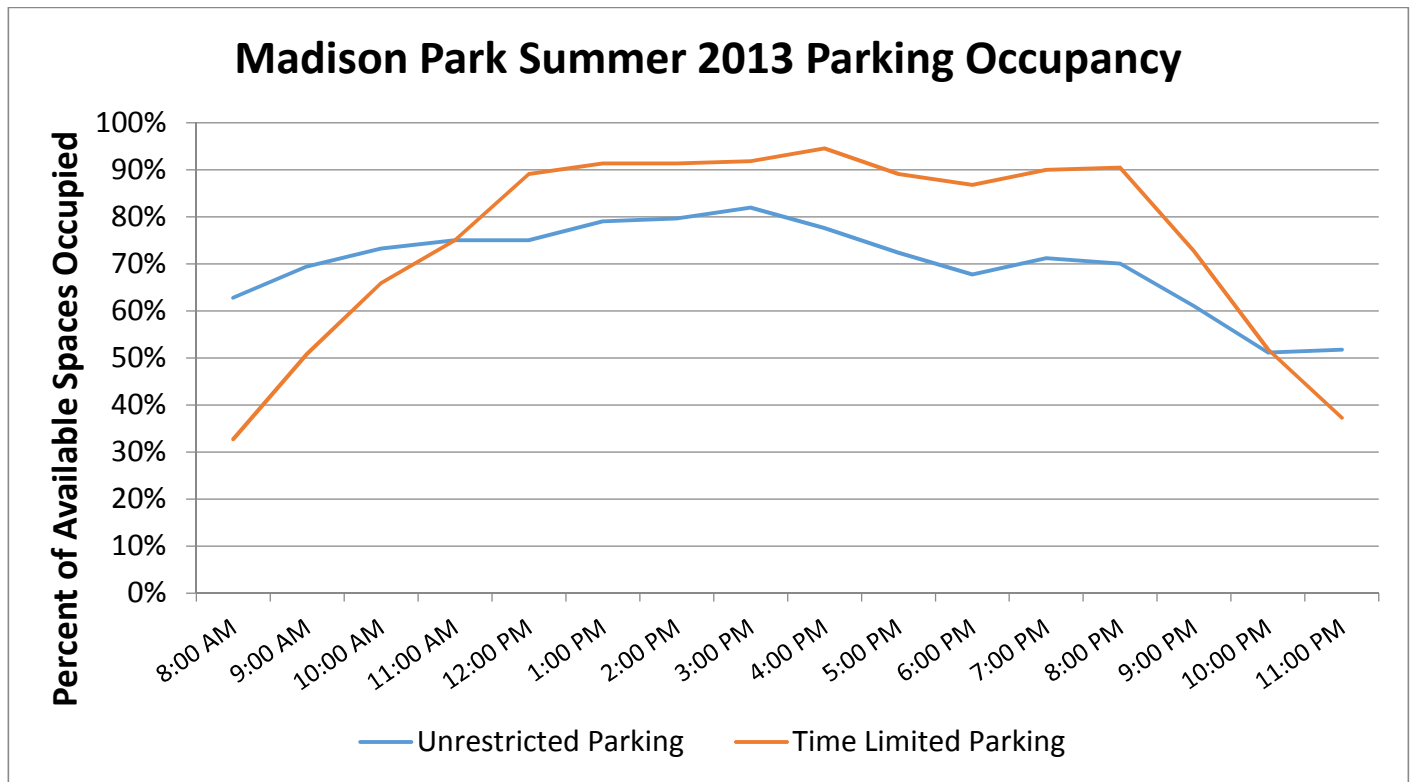
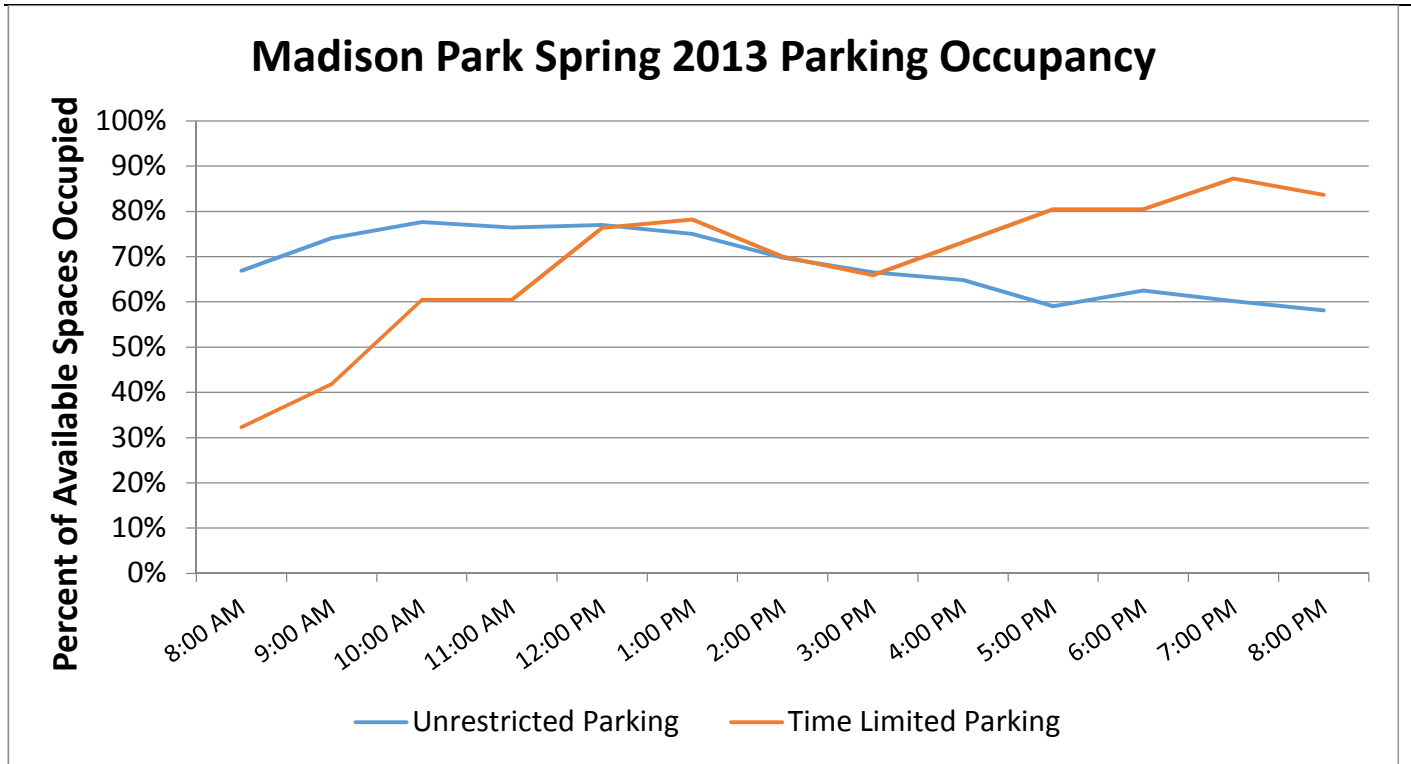
-To increase parking turnover and availability, businesses can petition to have time limits installed in front of their businesses or to change the current posted time limits

Who can I contact with questions or comments?

Jonathan Williams, Senior Transportation Planner at SDOT, jonathan.williams2@seattle.gov or 206-733-9026

**Madison Park
2013 Parking Study**

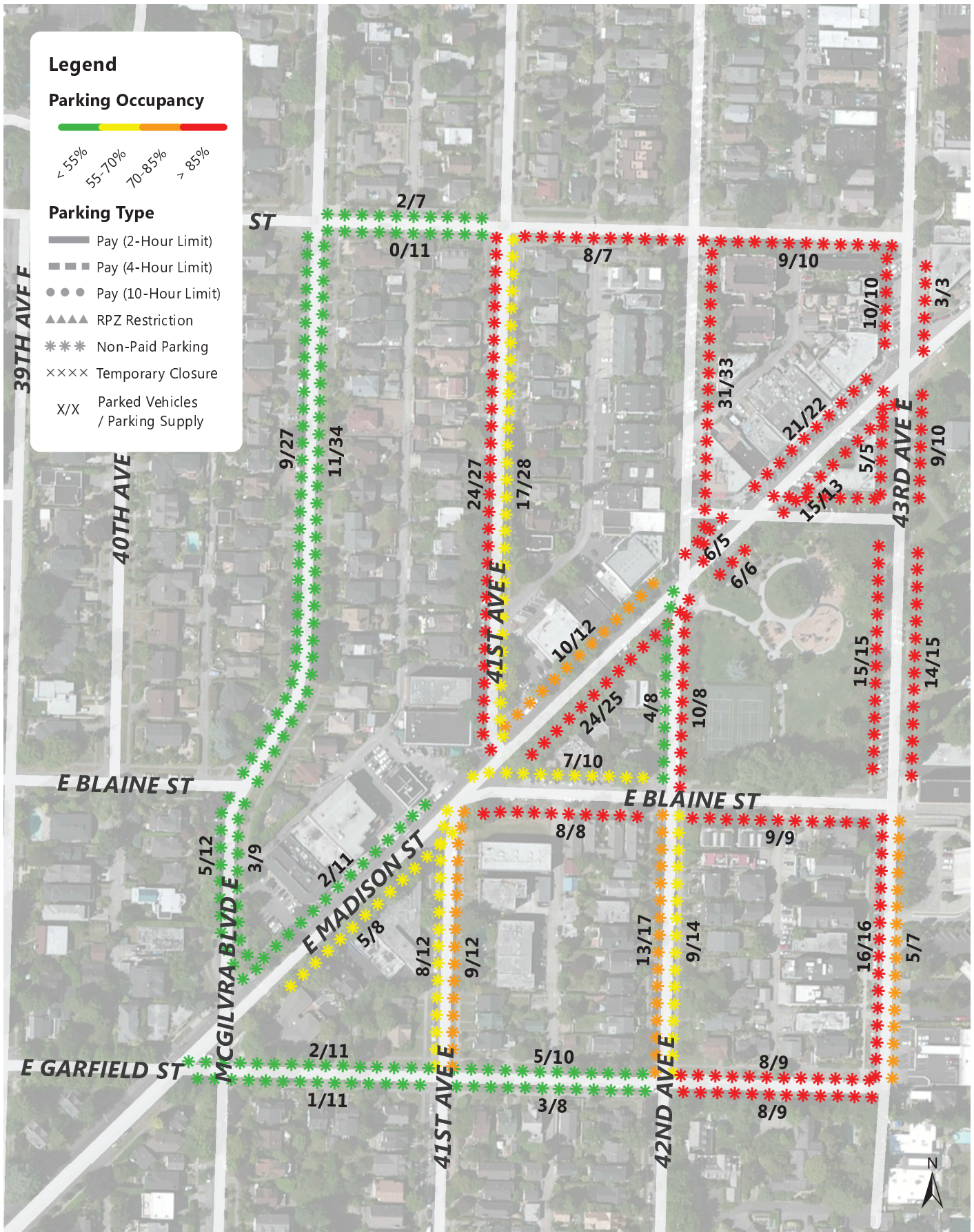
Madison Park Community Council - March 3, 2014, Madison Park Beach Bath House





Source: Esri, DigitalGlobe, GeoEye, i-cubed, USDA, USGS, AEX, Getmapping, Aerogrid, IGN, IGP, swisstopo, and the GIS User Community

<p>Legend</p> <p> — Time Limit - 1 Hour — No Parking Allowed — Time Limit - 2 Hours — Unrestricted Parking — Time Limit - 4 Hours </p>			<p>0 0.015 0.03 0.045 0.06 Miles</p> <p>SDOT Seattle Department of Transportation</p>
<h2 style="text-align: center;">Madison Park Parking Controls</h2>			



**Madison Park Weekday Parking Occupancy
7PM Occupancy of Each Blockface**

Annual Parking Study - Spring 2013





**Madison Park Weekday Average Parking Duration
(8AM - 8PM)**

Annual Parking Study - Spring 2013





Madison Park Weekday Parking Occupancy
Average Peak 3 Hours of Each Blockface (8AM-3PM)

Annual Parking Study - Summer 2013





**Madison Park Weekday Parking Occupancy
7PM Occupancy of Each Blockface**

Annual Parking Study - Summer 2013



**Madison Park Weekday Average Parking Duration
(8AM - 12AM)**

Annual Parking Study - Summer 2013