

Subject: NSF Holman/13th: Final design update

Hello!

I'm writing to inform you that we've completed design for the Neighborhood Street Fund (NSF) Holman Rd NW & 13th Ave NW New Signal project. As a reminder, we revised the design to keep the pedestrian overpass, and the final design now includes one crosswalk and more advanced signal design. The project will maintain the overpass and add a new at-grade crossing which is part of the [North Seattle Neighborhood Greenway](#).

### **Key elements and design updates**

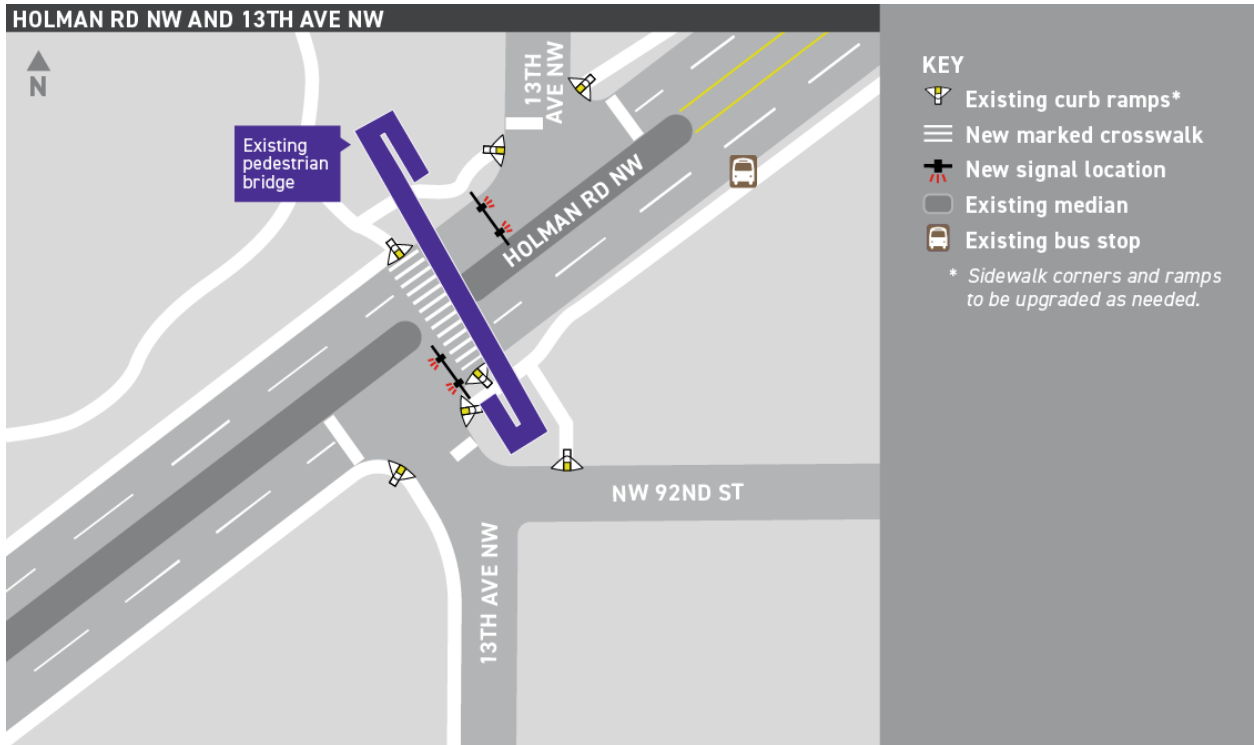
- The old design that included removal of the overpass also included a second marked crosswalk in the location of the existing bus stop. Because we're now keeping the pedestrian overpass, the final design includes just one crosswalk and no longer requires that the bus stop be relocated.
- The new signal locations are identified on the graphic below. The signals will include a pole and mast arm (see example photo below).

### **Project schedule**

We expect to start construction in late spring/summer 2018. We'll be in touch again later this spring with more details about the schedule and what to expect during construction.

We're committed to keeping you informed during construction. Please share this email with others who might be interested in receiving project information and construction updates.

Kristin Anderson  
Outreach Lead  
Neighborhood Street Fund Program  
(206) 733-9361  
[www.seattle.gov/transportation/NSFHolman.htm](http://www.seattle.gov/transportation/NSFHolman.htm)



*Example pole and mast arm signal*