

35th Ave NE Gateways

Intersections: 35th Ave NE/Erickson Place and NE 135th St; 35th Ave NE crosswalk at NE 130th St; 35th Ave NE and NE 130th St (westbound)
 Streets: South side NE 135th St between 35th and 37th Aves NE; NE 130th St between 35th and 37th Aves NE

Applicant Problem

There are no controlled intersections on 35th Ave NE north of NE 125th St, severing pedestrian connections in the Lake City Urban Core. With transit on the west side of 35th Ave NE and the primary schools on the east side, there is a steady flow of students, transit riders and people driving cars competing for limited east-west access at the NE 130th (Fred Meyer, Laurel Academy) and NE 135th (Cedar Park Elementary) crossings. The 35th Ave NE corridor is a primary arterial and at peak traffic hours carries much of the overflow traffic of Lake City Way SR522 causing unsafe and unregulated conditions for all users. Pedestrian mobility is further limited by conditions on the east side of 35th Ave NE due to failing infrastructure and lack of sidewalks exiting the Cedar Park neighborhood. At NE 130th St there are open ditches directly adjacent to the hilly and crowned NE 130th St roadbed, so drivers park fully in the right-of-way leaving the only access for pedestrians in the center of the street. Due to natural springs on this hillside and inadequate drainage, the roadbed also becomes slick and limits accessibility. At NE 135th St, access to the newly opened Cedar Park Elementary School follows a narrow and failing asphalt sidewalk. Missing curb ramps on the east side of 35th Ave NE coupled with open drainage flowing onto the sidewalk limits local parents with strollers and a school teacher in a wheelchair.

PROJECT TYPE

Crossing and Corridors

APPROXIMATE LENGTH

N/A

COST ESTIMATE

Project 1: \$72,000

Project 2: \$260,000

Project 3: \$316,000

Project 4: \$139,000

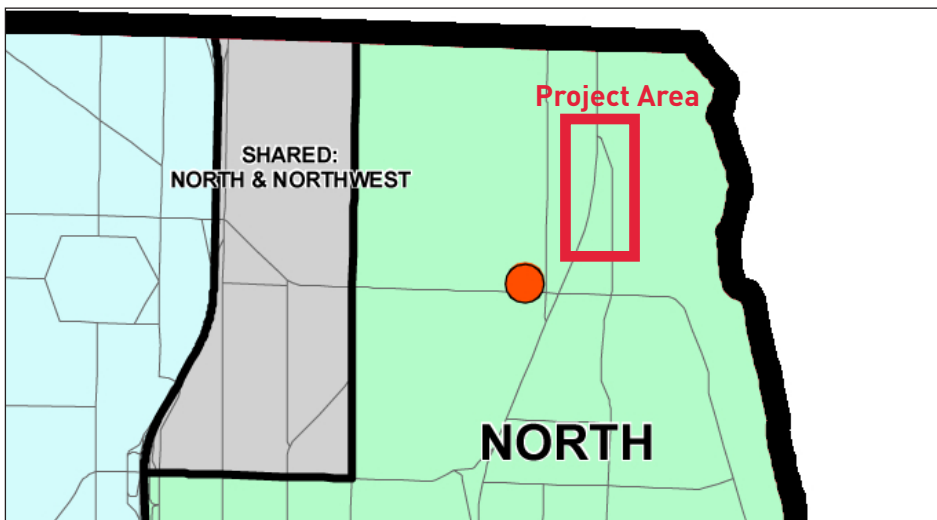
TOTAL: \$787,000

SDOT SAFE ROUTES TO SCHOOL FUNDS

\$100,000

SDOT NSF FUNDS REQUESTED

\$687,000



Applicant Solution

1. Fully signalized intersection of 35th Ave NE at NE 130th (WB) leveraging existing curb bulbs, crosswalks, sidewalks, Safe Routes to School paths and metro stops. This creates a contiguous walk-able route to the business district. It alleviates the distraction, frustration and visibility issues in this school zone and KC Metro turnaround.
2. Install a low cost asphalt sidewalk on NE 130th (EB) in conjunction with a SPU bioswale to mitigate natural spring surface water on this key pedestrian pathway and Safe Route to School(s). Providing a safe access for students from our fragile 33rd Ave NE community and allowing neighbors to walk to nearby metro and shopping.
3. Install pedestrian activated Rectangular Rapid Flashing Beacons for all 4 corners of the intersection of 35th Ave NE/Ericksen Place and NE 135th St. Install a raised crosswalk on south aspect of 35th Ave NE and NE 135th with abundant advanced warning signs on this sweeping curve. This is a critical intersection for Cedar Park Elementary and North District Council ranked this intersection crucial in its 2016 NPSF choices for it's proximity to the school and major transit lines.
4. Repair existing south side sidewalk on NE 135th as primary access to Cedar Park Elementary.



Existing conditions at 35th Ave NE and NE 130th St



Existing intersection at NE 135th St and Ericksen Place



Existing conditions at NE 135th St and 35th Ave NE - Northeast Corner

Seattle Department of Transportation (SDOT) Review

Project Description

35th Ave NE and Erickson Pl are minor arterial streets with bus service. NE 130th St and NE 135th St east of 35th Ave NE are residential streets. There is an existing marked crosswalk at NE 130th St and 35th Ave NE.

This application included four different locations for potential projects. The following improvements are proposed:

1. Intersection of 35th Ave NE and NE 130th St:
The existing curb bulb on 35th Ave NE will be expanded to the south with a concrete curb bulb extending through the intersection. This bulb will also create additional soil volume for the existing tree. A new curb bulb will be added at the southwest corner. Counts of existing crossings do not warrant a signal at this intersection. If funded, further analysis and additional counts will be taken at this intersection.
2. NE 130th St from 35th Ave NE to 37th Ave NE:
A 6-foot asphalt sidewalk with wheel stops will be added to the north side of NE 130th St. On the west end of the street, no planting strip is possible due to steep grades behind the sidewalk. On the east end of the street, there is room for a planting strip with street trees.
3. Intersection of NE 135th St and 35th Ave NE/ Erickson Pl NE: Curb bulbs and new curb ramps will be added at all corners of the intersection at NE 135th St and Erickson Pl NE. A new marked crosswalk and rectangular rapid flash beacon (RRFB) would be installed on the south leg of the intersection since it is identified as a school walking route for Cedar Park Elementary.
4. NE 135th St from 35th Ave NE to 37th Ave NE:
The existing damaged asphalt walkway will be repaved. The new walkway will be a 6 foot wide at-grade asphalt walkway with wheel stops.

This project would be leveraged by funds from SDOT's Safe Routes to School Program.

Constructability

- This location is within the Thornton Creek

drainage basin. Existing ditches are located within the project area and may require modification.

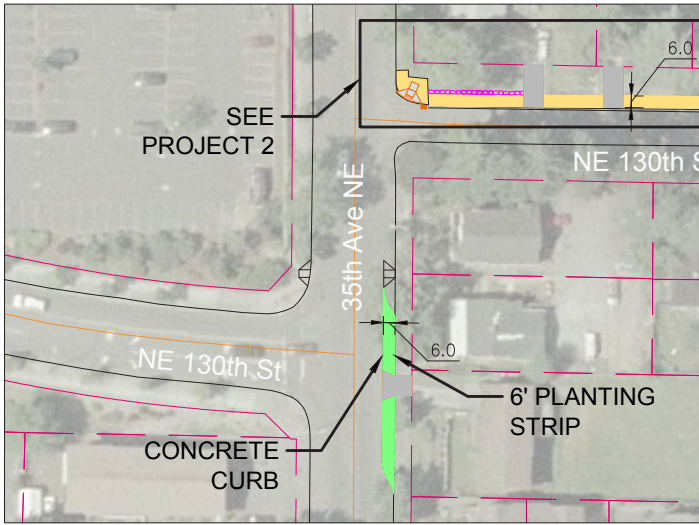
- At the west end of NE 130th Ave NE, some regrading may be required during the sidewalk installation.
- There is a spring located on the south side of N 130th St. Coordination with Seattle Public Utilities at the start of the design will be needed.

Impacts

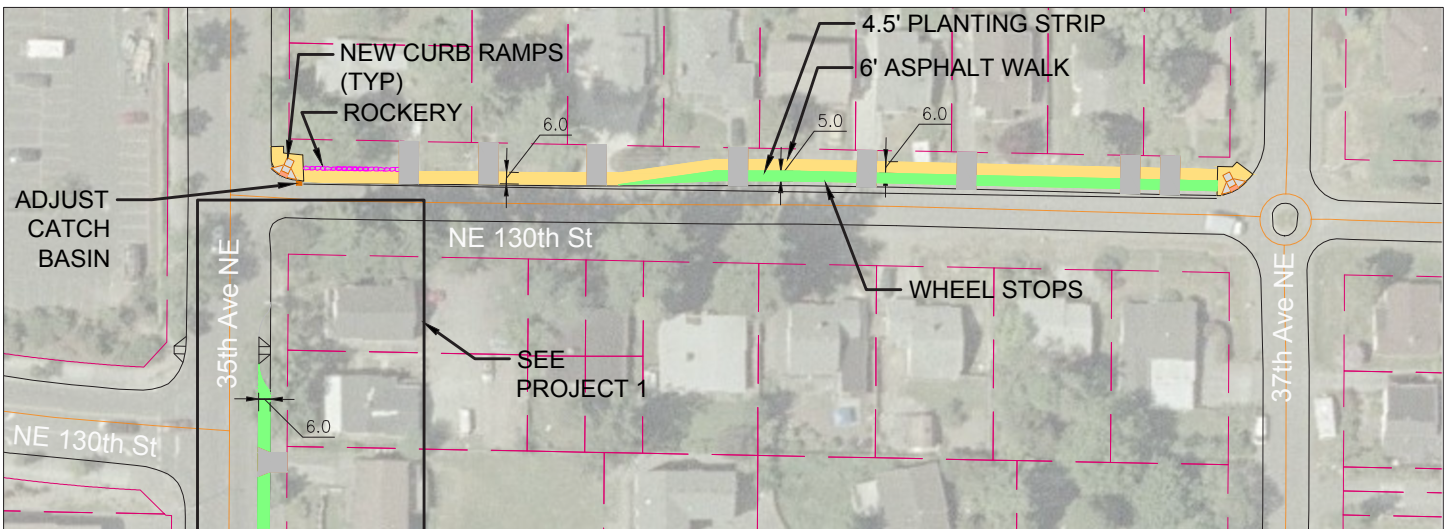
- Construction of the new sidewalk may impact adjacent property owners and require adjustments to fences and driveways. Encroachments into the public right-of-way may be removed.
- During the design process, Metro transit movements will need to be evaluated with King County to understand how they would work with the new design.
- Parking will be restricted near intersections. While this parking is not legal, it may be perceived as parking loss.

Benefits

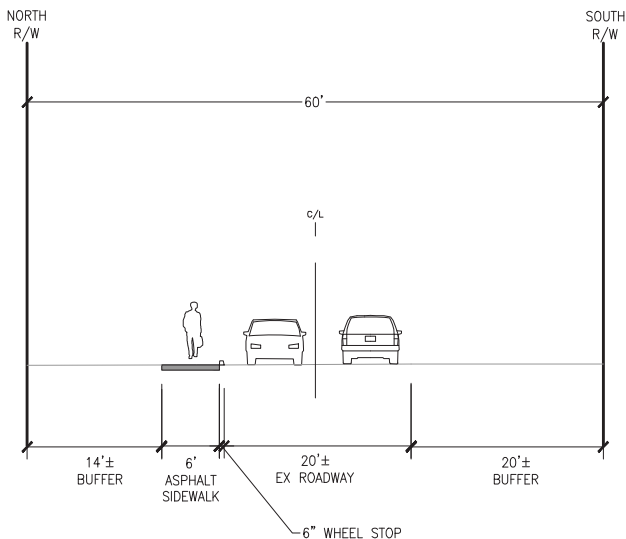
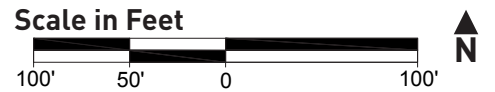
- Increased pedestrian and biking connections to neighborhood destinations within Lake City and to Cedar Park Elementary School.
- Encourage more walking and biking.



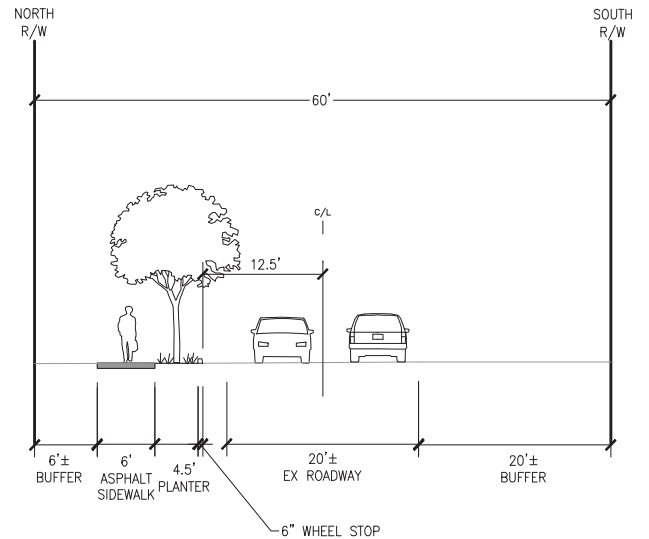
1. Painted curb bulb through southern intersection



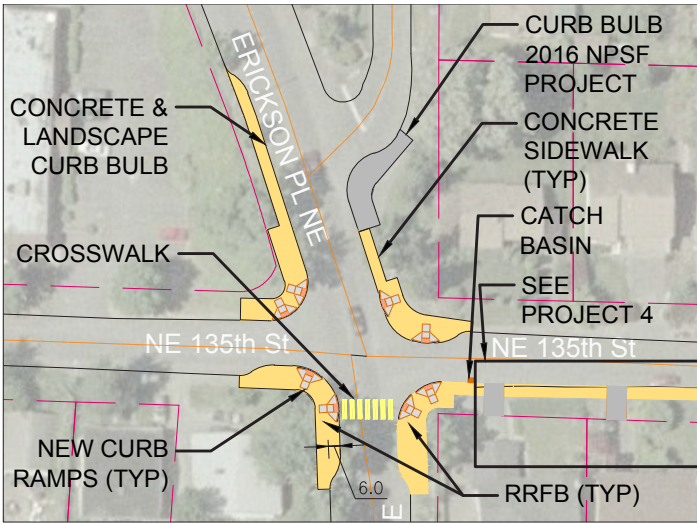
2. Sidewalk on NE 130th St with natural spring



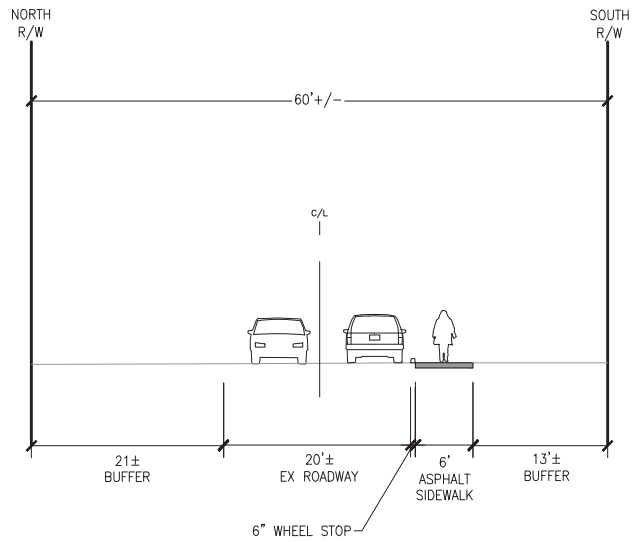
2. NE 130th St sidewalk west cross section



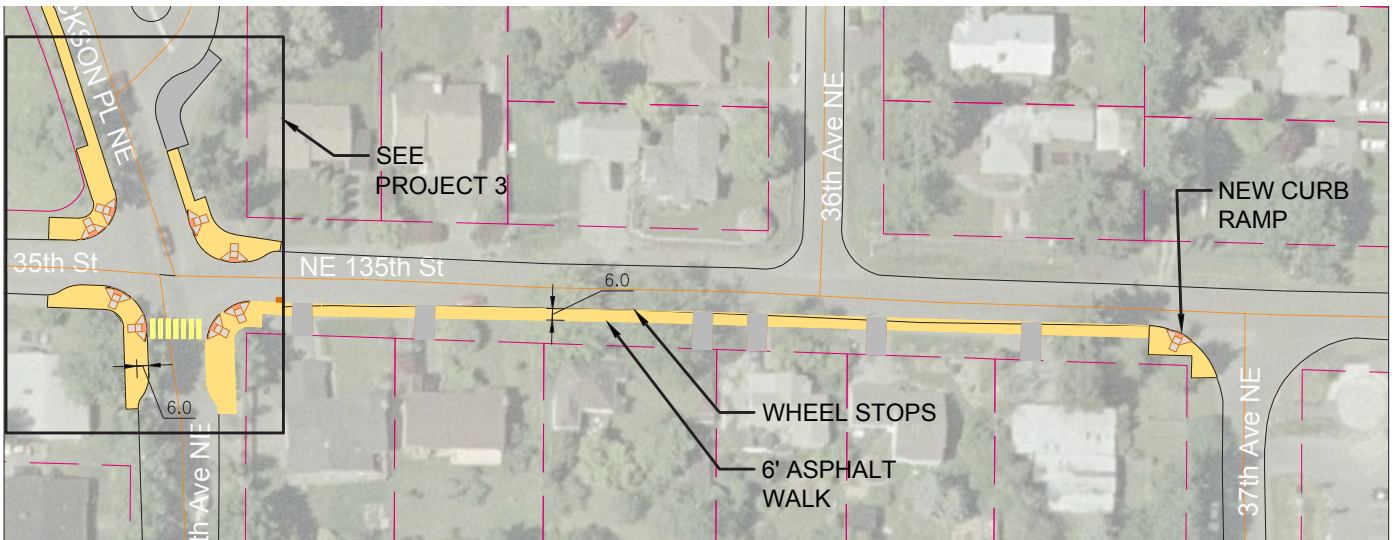
2. NE 130th St sidewalk east cross section



3. Curb bulbs and RRFBs at the intersection of NE 135th St and 35th Ave NE/Erickson Pl NE



4. NE 135th St sidewalk cross section



4. Sidewalk on the south side of NE 135th St between 35th Ave NE and 37th Ave NE

