



Magnolia Village Festival Street

From the west side of 32nd Ave West to the east side of 34th Ave West on West McGraw Street

Applicant Problem

The Magnolia Chamber of Commerce is leading a Community-Based Commercial Revitalization Project in Magnolia Village. The MVFS will continue the work of revitalizing Magnolia Village that began in early 2015. This work, with grants from the Department of Neighborhoods & Office of Economic Development, developed a vision statement for future development & growth. Please see attachments.

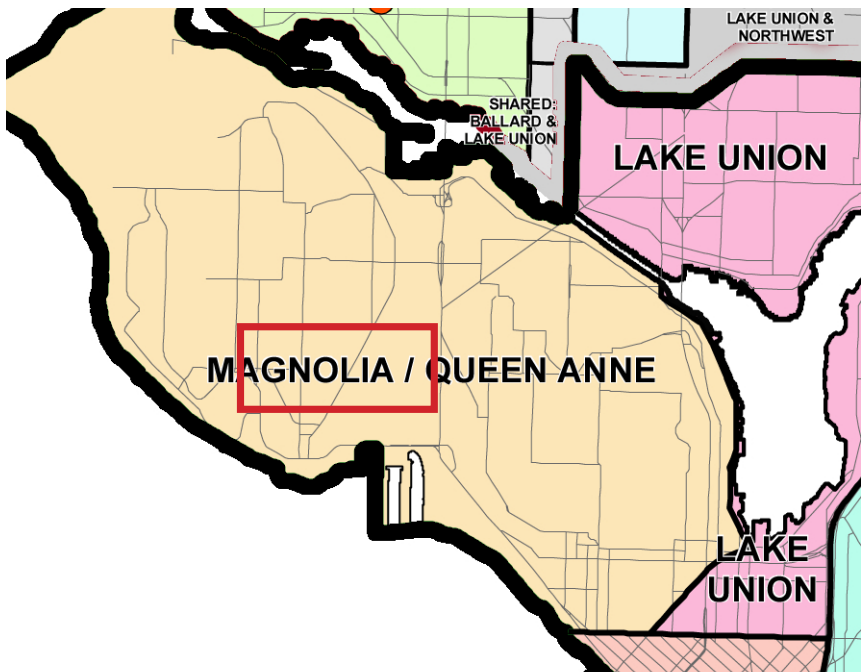
Applicant Solution

This section of McGraw closes for community activities, including the Little League Parade, SummerFest Parade, Halloween, Winterfest, etc. Additionally, McGraw from 32nd to 33rd is closed from 10 to 2 on Saturdays from June 4th thru October 8th. This would be taking what is already in place & expanding it. Metro will not be impacted as bus service does not travel through Magnolia between 32nd & 34th on McGraw. Proposed solutions include curb bulbs with parklets if possible; sidewalks on portions of McGraw between 33rd & 34th; electric power at street level so there wouldn't be extension cords creating hazards; pedestrian lighting; capability to have hanging baskets; revised parking to keep the area pedestrian friendly; public art. Please see attachments.

PROJECT TYPE
Festival Street

APPROXIMATE LENGTH
650 lf

COST ESTIMATE
\$506,000



Seattle Department of Transportation (SDOT) Review

Project Description

W McGraw St is a collector arterial street with 1 lane of traffic in each direction and parallel parking on both the north and south sides. The street width is 48-feet and allows for the accommodation of traffic lanes and parking, with extra space available. W McGraw St is shown in the Seattle Bicycle Master Plan with a protected bike lane along this portion of the corridor. Metro bus number 31 also uses W McGraw St.

The proposed conceptual design enhances the pedestrian feel of W McGraw St while maintaining parking and without constructing permanent improvements that could conflict with future changes to the street. Improvements include:

- Replacing existing parallel parking on the north side of the street with back-in angle parking. This will narrow the street and replace the existing parallel parking in place today. Parallel parking will be maintained on the south part of the street.
- Installing painted curb bulbs at the intersections of W McGraw St with 34th Ave W, 33rd Ave W, and 32nd Ave W. The bulbs will be colored with a durable material and will also be supplemented with raised planters. Maintenance of the planters will require a community sponsor.
- Installation of 12 pedestrian light poles, evenly placed on W McGraw St. Poles will also have brackets to hold planted hanging baskets.
- Installation of a service cabinet on each block to provide electrical outlets for community use during events. A community sponsor is needed to assume responsibility for access to the cabinets and payment.

Drainage facilities will not be impacted by the proposed improvements.

Constructability

- The improvements are mainly limited to channelization and illumination work in the right of way.

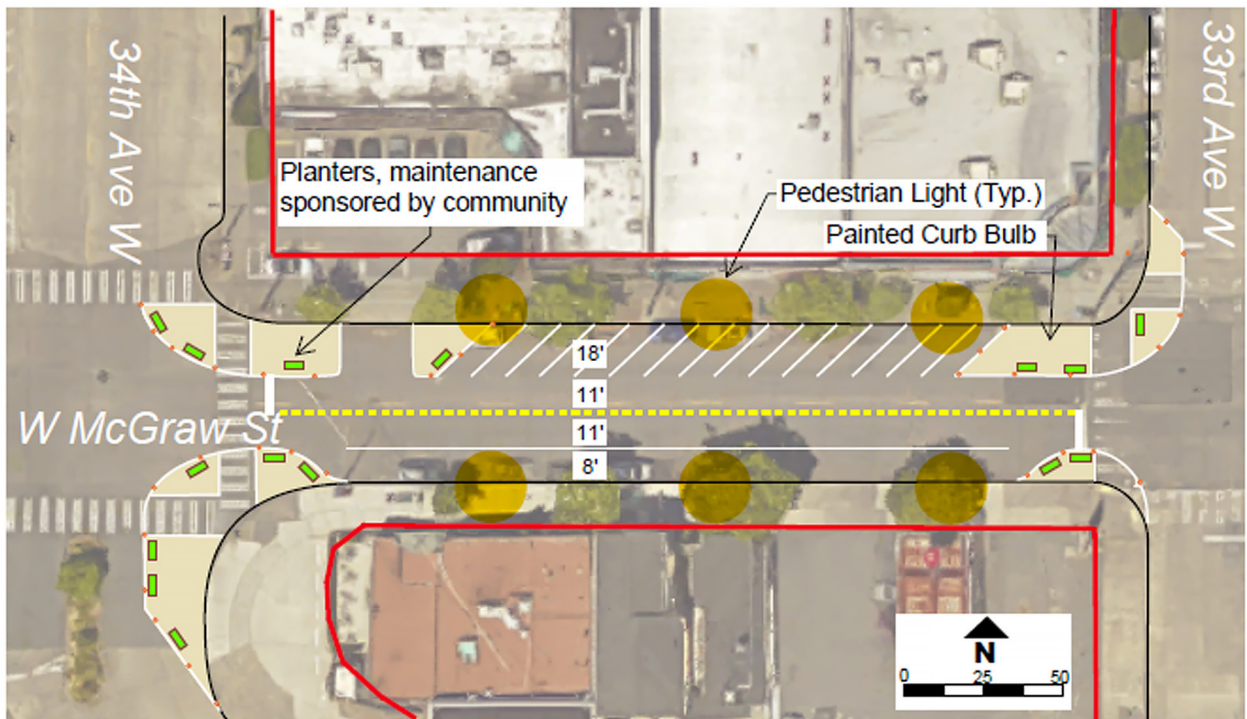
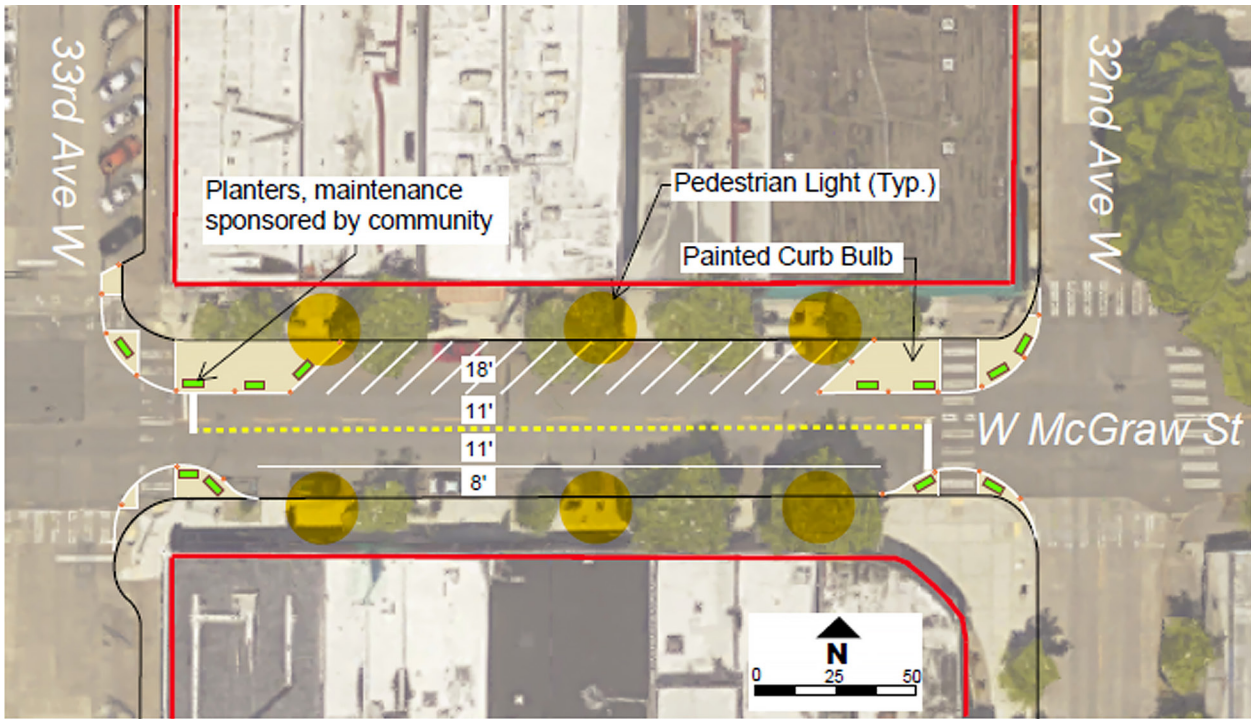
Impacts

- Existing parking will be maintained, however, there may be a perception that there is less parking due to the new painted curb bulbs. The overall number of parking spots on the street will increase due to the change from parallel parking to angle parking on the north side.

Benefits

- Flexible design allows for low-effort reconfiguration for protected bike lanes in the future
- Increased safety for pedestrians by shortening crossing distances.
- Increases the existing number of parking stalls
- Enhances the pedestrian experience by adding illumination
- Reduces perceived street width to encourage lower speeds along this portion of W McGraw St.

Seattle Department of Transportation (SDOT) Review



Proposed Festival Street Layout