

Magnolia **BRIDGE** PROJECT



Public Meeting November 29, 2005

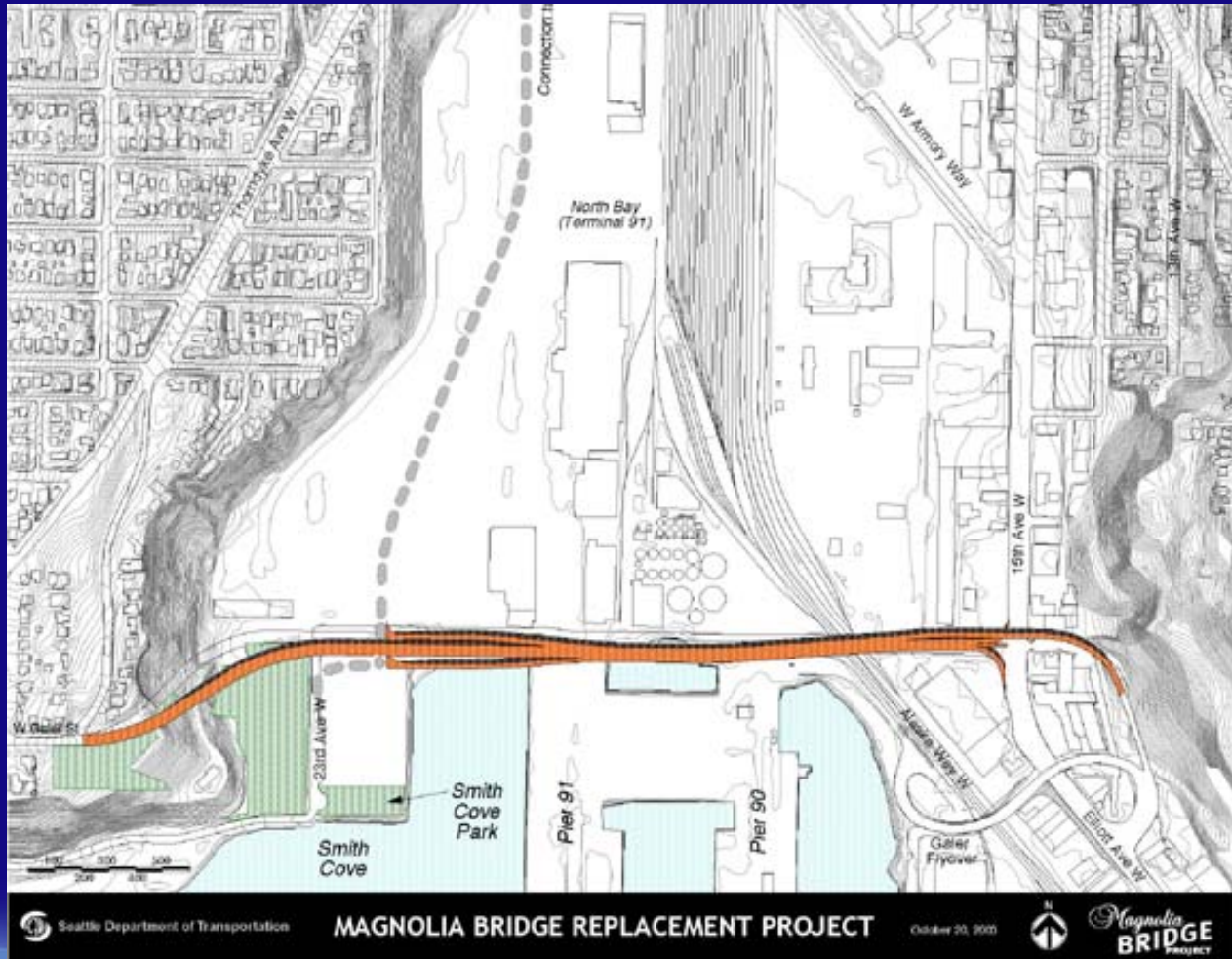


Seattle Department of Transportation

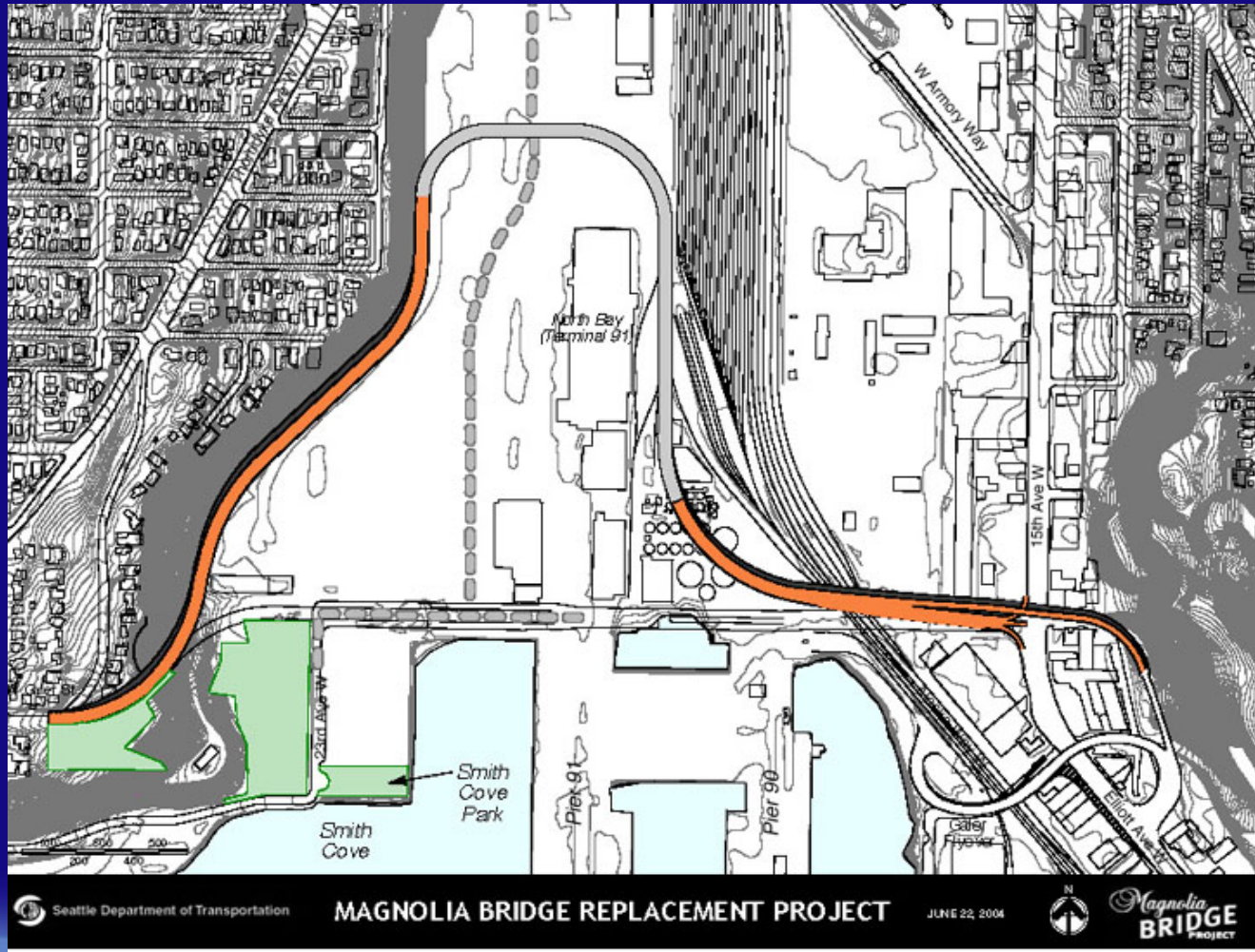
Overview

- Alternatives
- Rehabilitation Alternative
- Inspections
- Environmental Analysis Results
- Cost and Schedule
- Next Steps

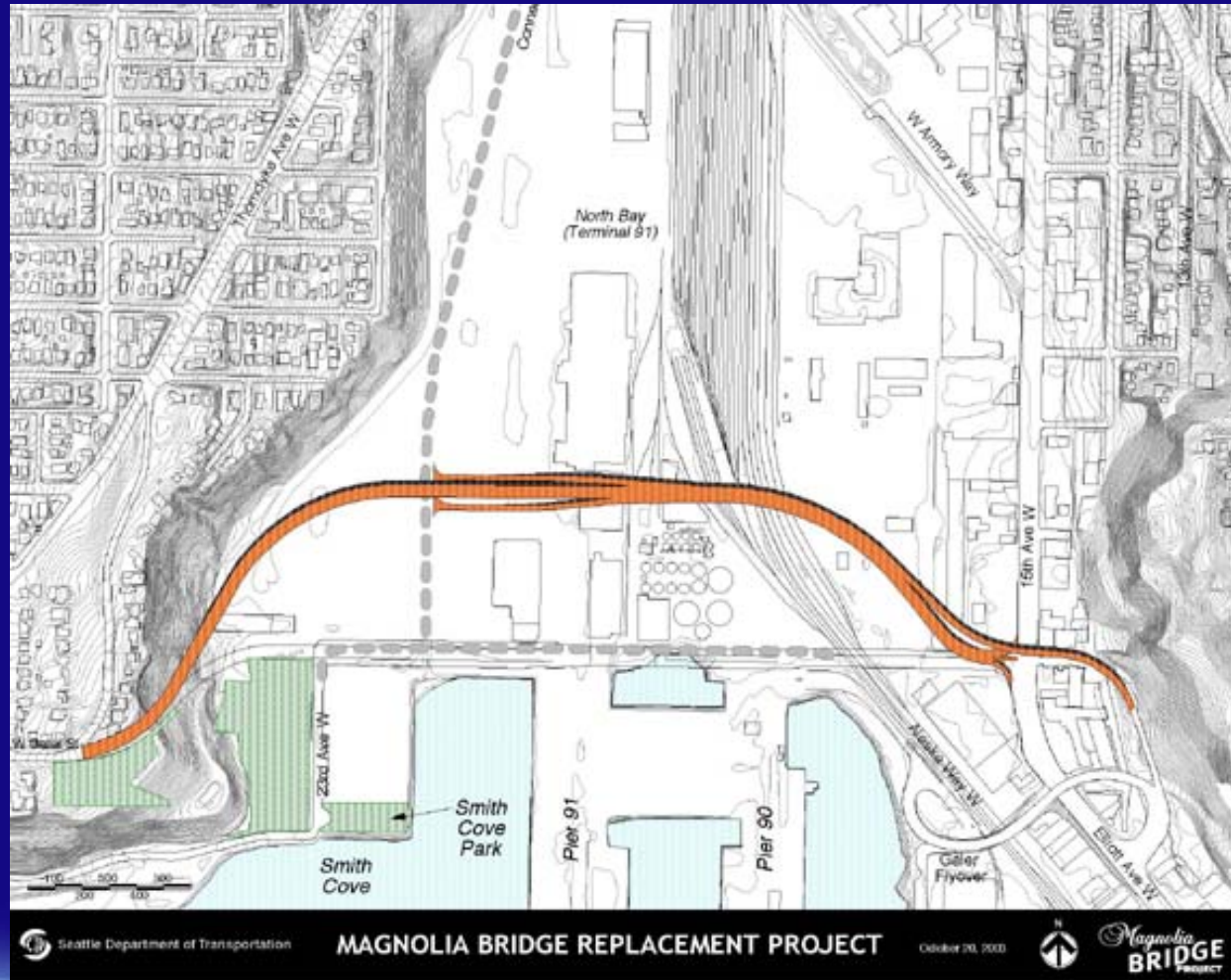
Alternative A



Alternative C








Alternative D



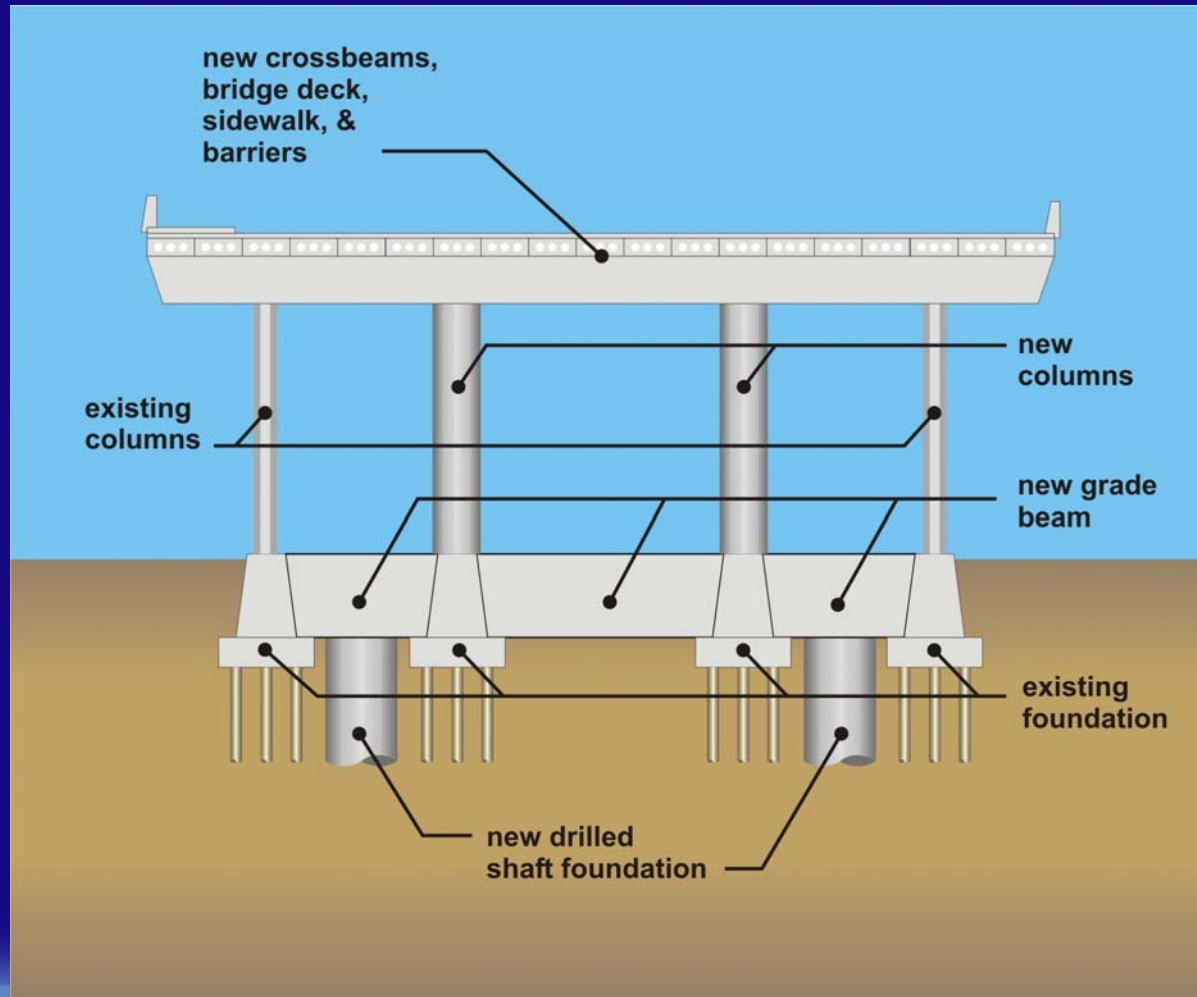
Rehabilitation Alternative



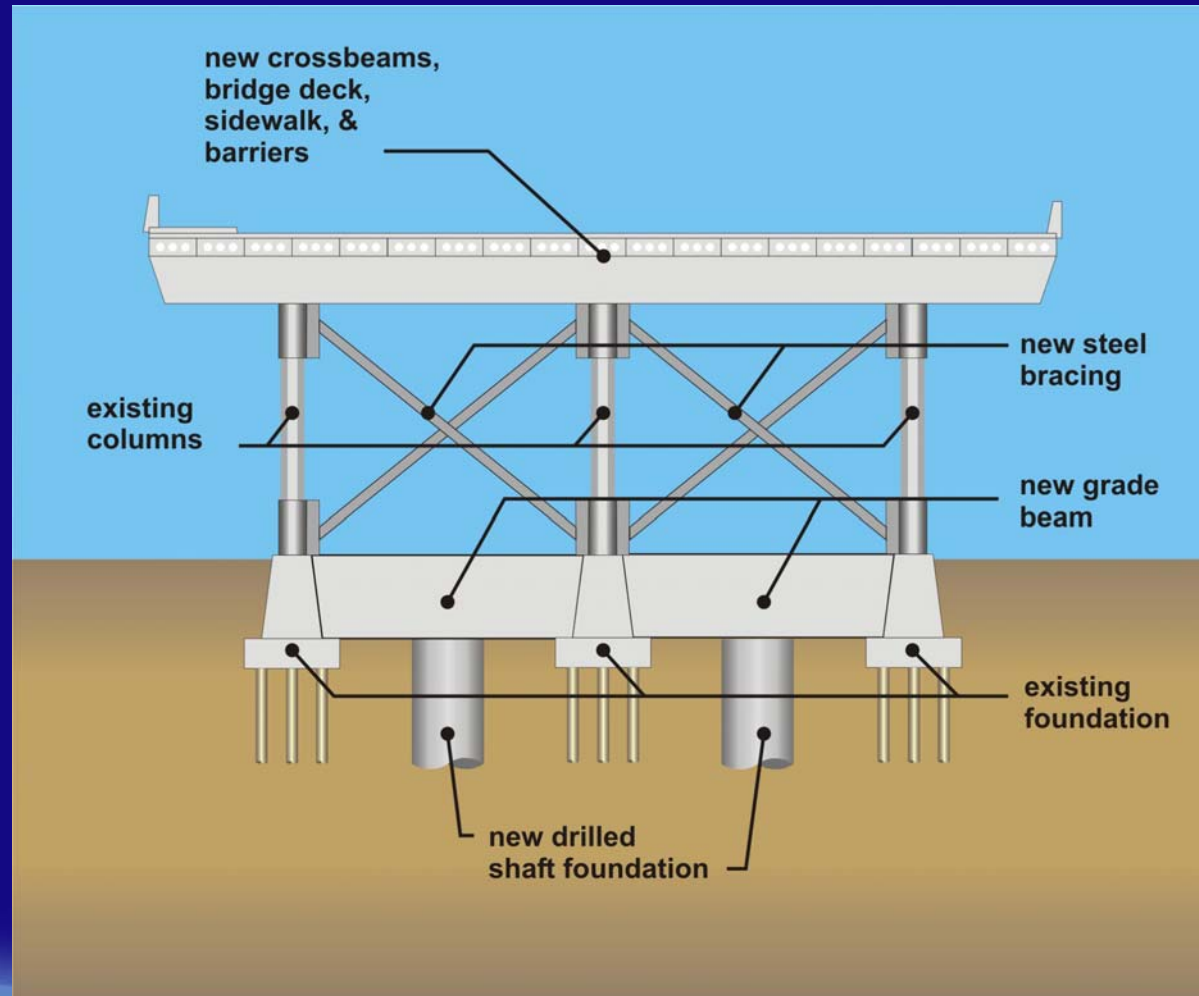
-  Existing structures retained: ① 15th Ave W overpass; ② ramps to/from marina
-  Bridge deck and crossbeams replaced; columns, bracing, and foundations strengthened
-  All structure removed and replaced: ③ center ramp to Terminal 91, ④ ramp to 15th Ave W, and ⑤ railroad bridge
-  All structure removed and not replaced: ⑥ connection to building (Anthony's Seafood Distributing)
-  Approximate limit of ground improvement

October 5, 2005

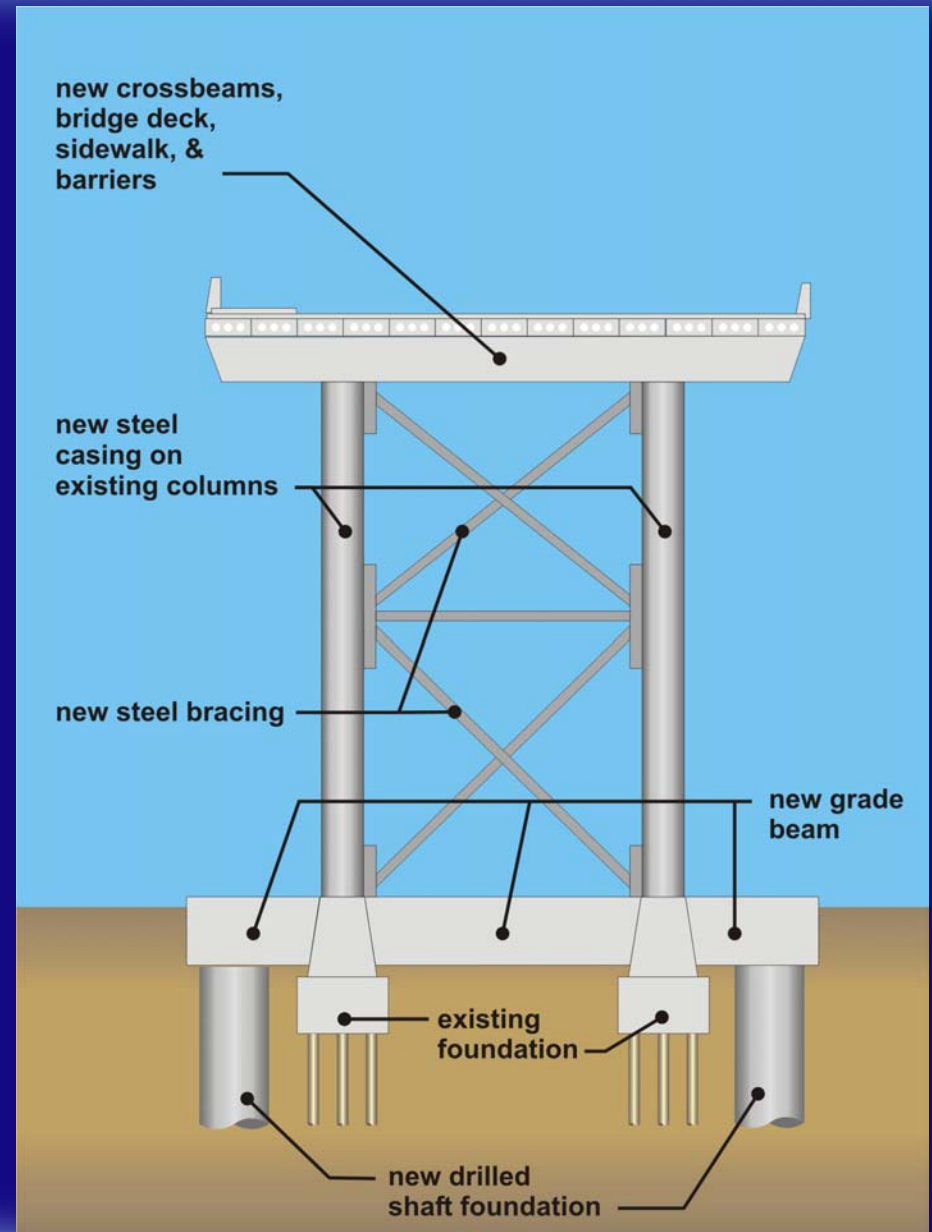
Rehabilitation Alternative



Rehabilitation Alternative



Rehabilitation Alternative



Inspections



Inspections



Inspections



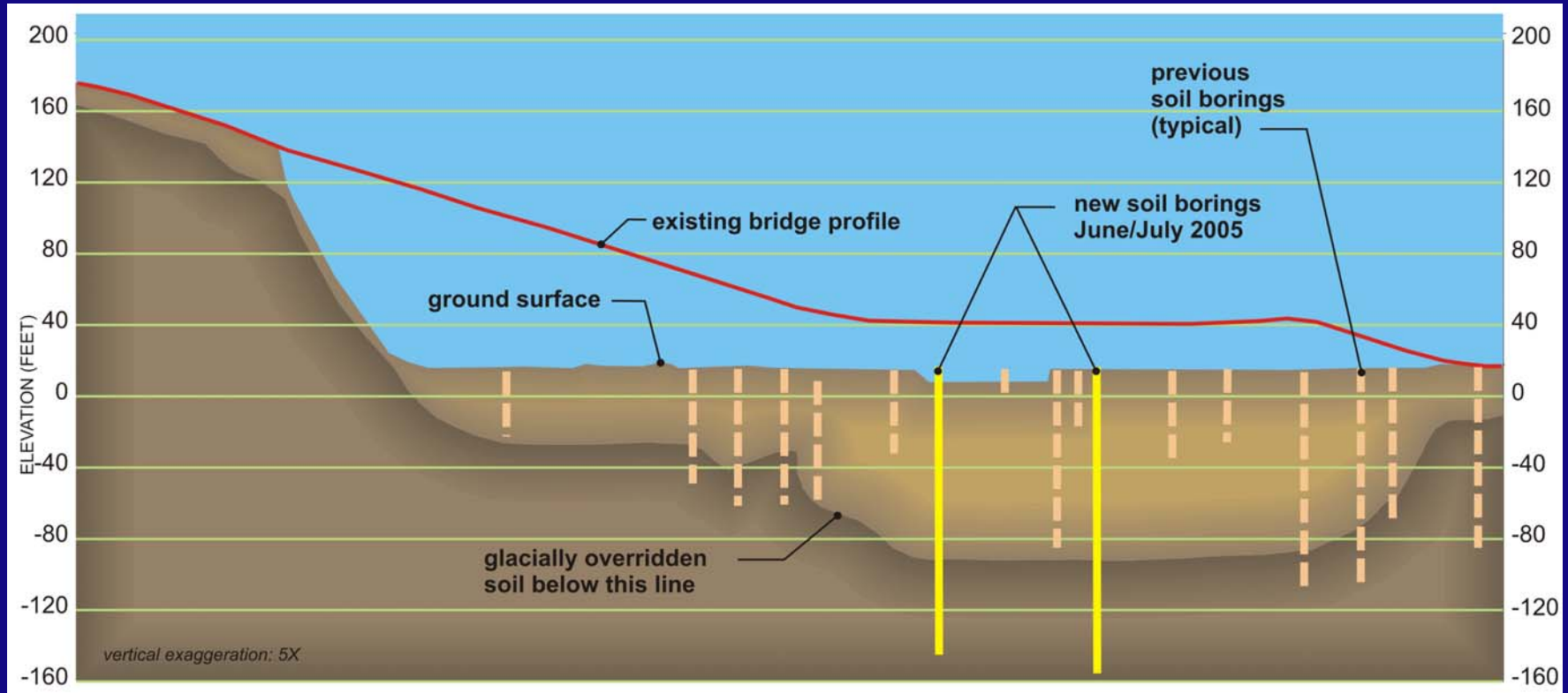
Inspections



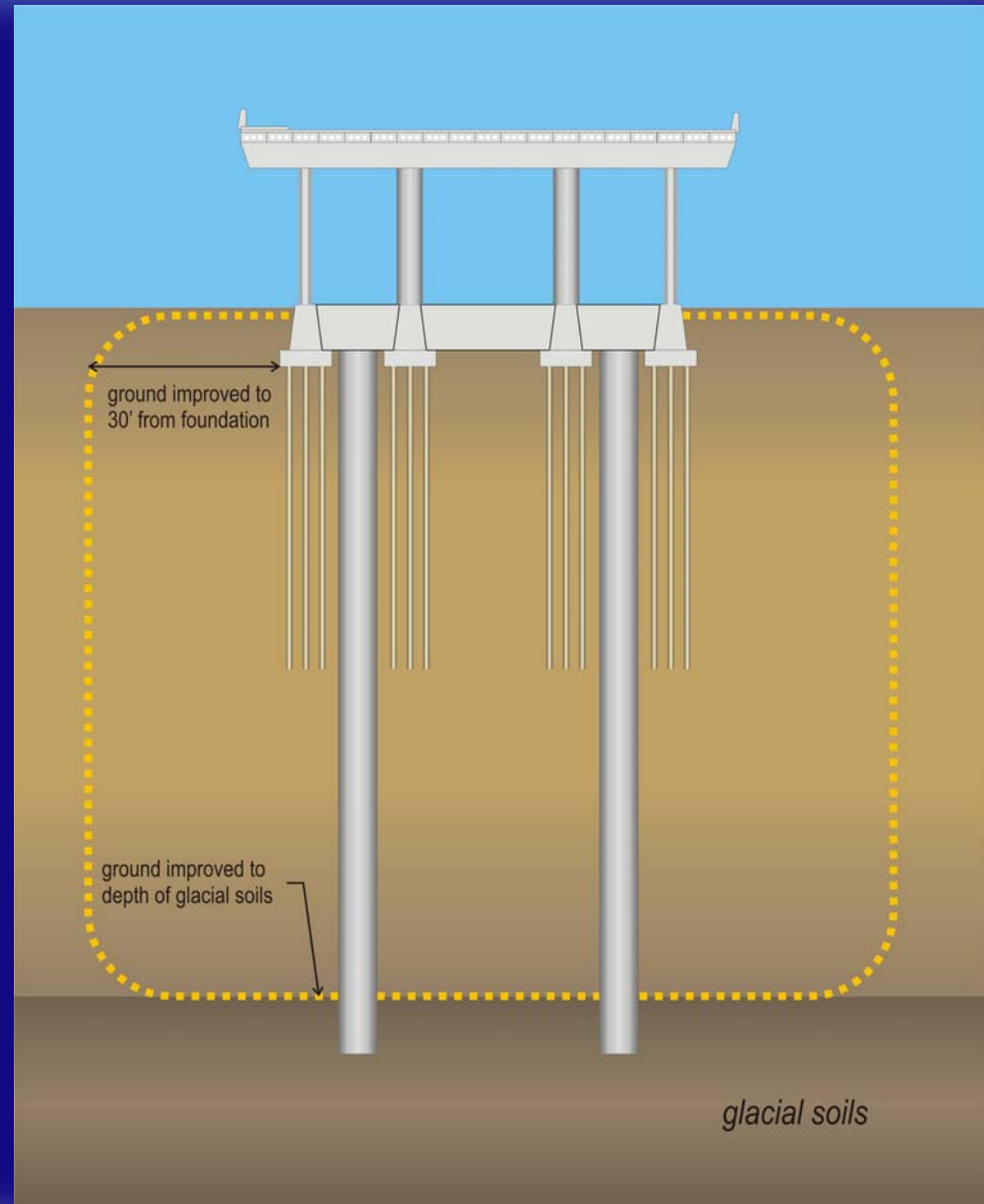
Inspections



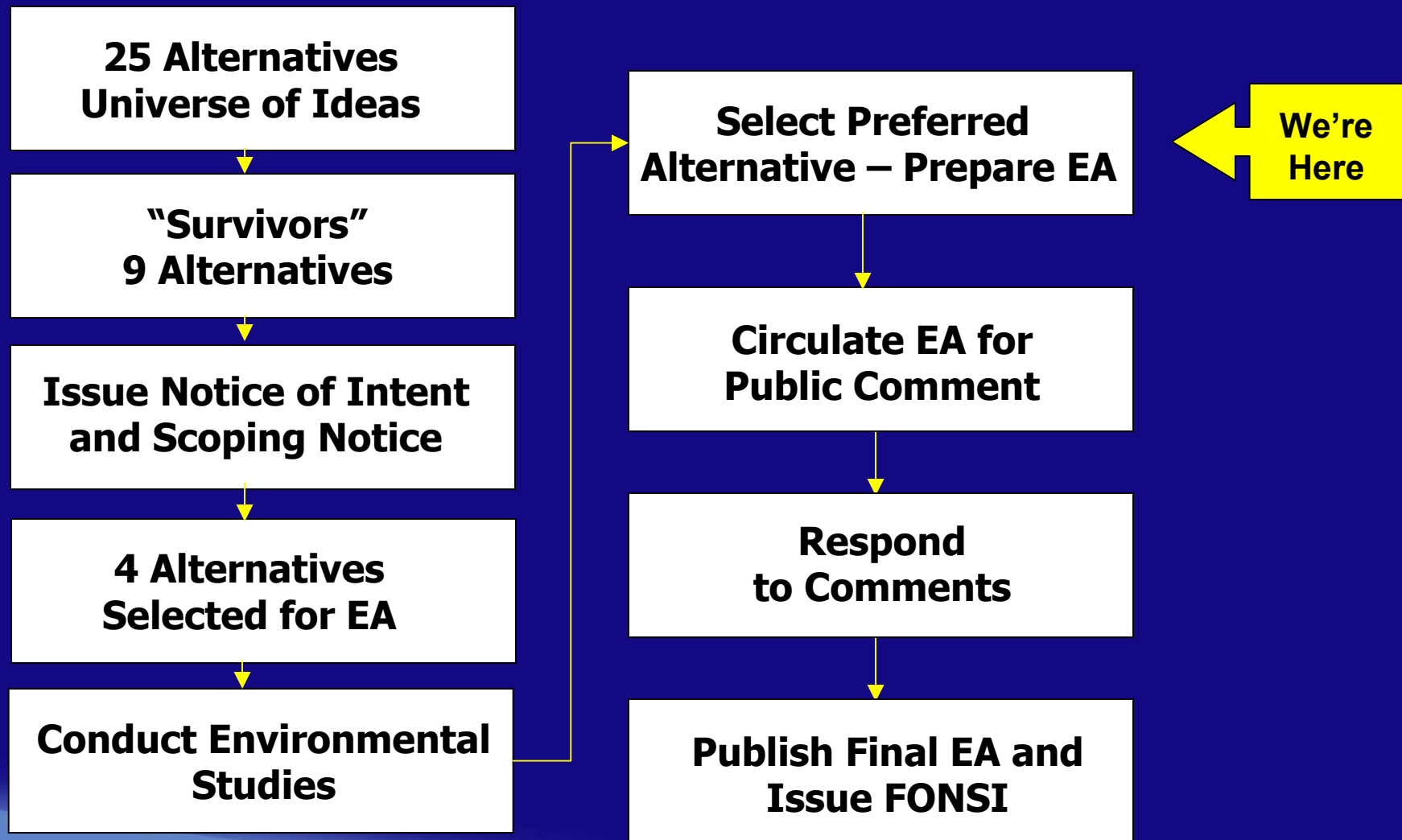
Ground Improvements



Ground Improvements



Design & Environmental Documentation



Similar/Identical Impacts

- Water Quality
- Wetlands
- Air Quality
- Noise
- Cultural, Historic, and Archeological Resources



Impacts Differ by Alternative

- Construction Detour Time
- Added Travel Time
- Pedestrian Use & Safety
- Residential & Business Relocations
- Displacements & Environmental Justice
- Waterways, Hydrology, & Floodplains
- Vegetation
- Fish, Wildlife, & Habitat
- Geology, Soils & Topography
- Land Use
- Recreation
- Visual Quality
- Services and Utilities
- Hazardous Materials



Estimated Total Project Costs

(Year of Expenditure in \$Millions)

Alternative	*90 Percentile Cost Estimates		
	ROW	Design / Construction	Total
A	\$32	\$164	\$196
C	\$63	\$151	\$214
D	\$56	\$157	\$213
Rehabilitation	\$1	\$177	\$178

***Cost estimates assume no delay in project schedule.**



Costs to Date

Activity	Percentage of Total	Total Spent to Date (\$)
Planning	12%	450,000
Design	24%	900,000
Environmental Review	43%	1,620,000
Public Involvement	21%	790,000
Total Spent to Date	100%	3,760,000

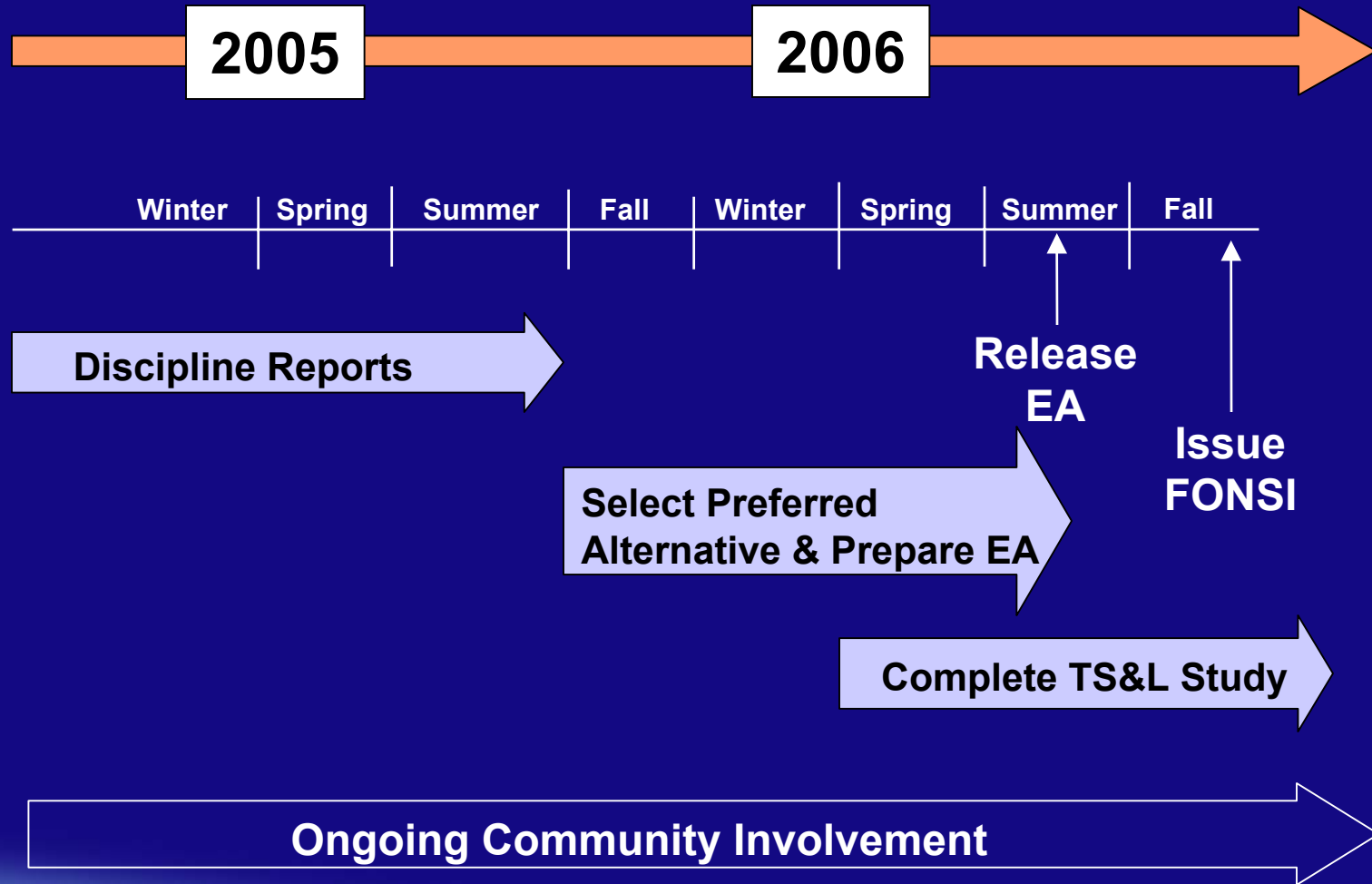
Costs as of September 1, 2005

Remaining Budget

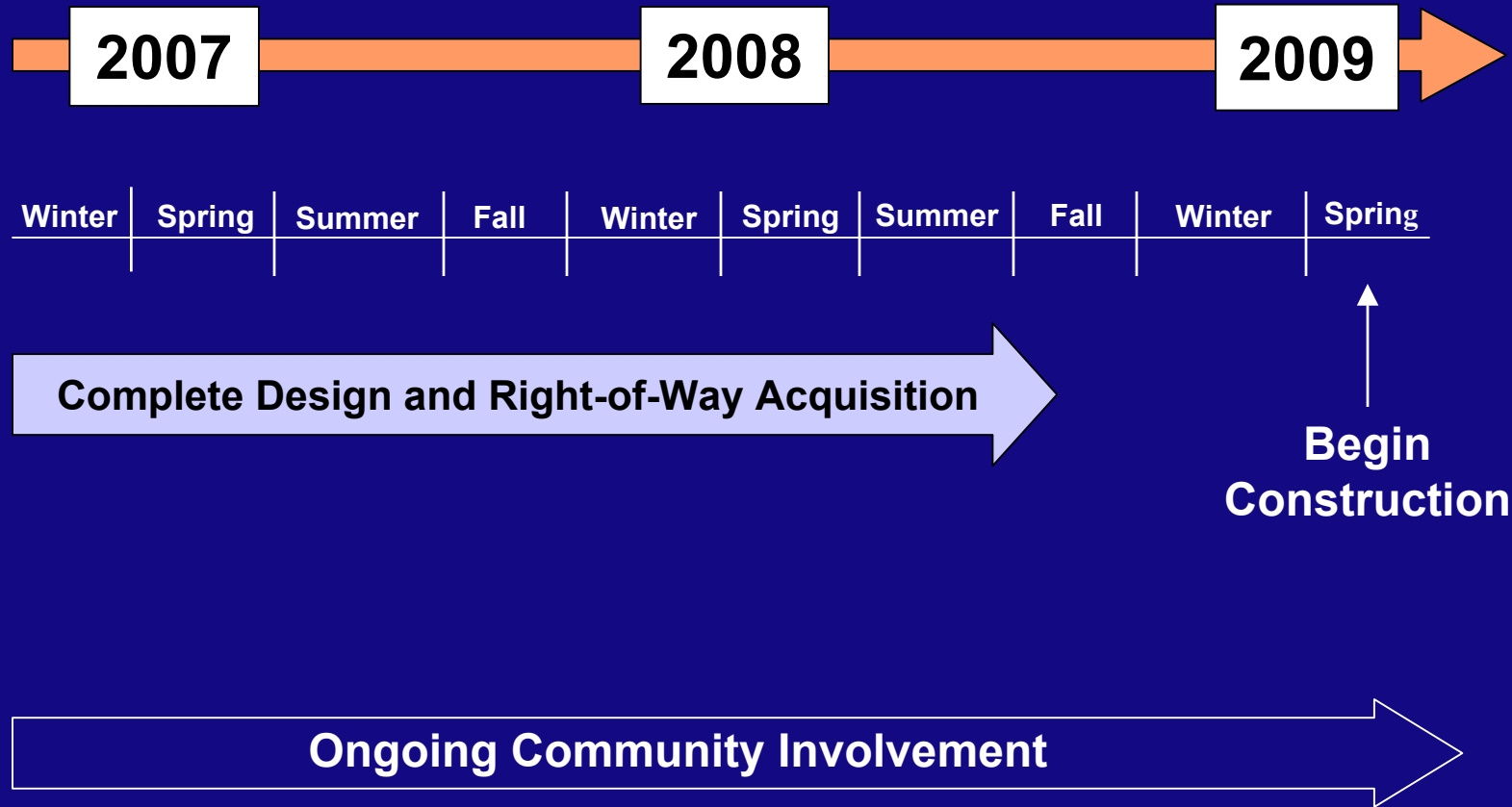
- **~\$6 million** = City + consultant costs through completion of TS&L Study
(Late 2006)
- **~\$4 million** will remain in 2007 to develop contract plans to ~50%
(Late 2007 – Early 2008)
- **\$4 million** needed to complete contract plans



Schedule: 2005 - 2006



Schedule: 2007 - 2009



For More Information Contact:



Kirk T. Jones

SDOT Project Manager

(206) 615-0862

KirkT.Jones@seattle.gov

Cela Fortier

SDOT Project Manager

(206) 233-7157

Cela.Fortier@seattle.gov

700 – 5th Ave, Ste 3900

P.O. Box 34996

Seattle, WA 98124-4996

www.seattle.gov/transportation/magbridgereplace.htm



Seattle Department of Transportation