



Seattle Police Department

SEA / STAT

March 4, 2015

PRINCIPLES OF SEASTAT

1. **Accurate and Timely Information**

Know what is happening

2. **Effective Tactics**

Have a plan

3. **Rapid Deployment**

Do it quickly

4. **Relentless Follow-Up and Assessment**

If it works, do more. If not, do something else

FORMULATING CRIME REDUCTION STRATEGIES

Focus on...

- *Problem Locations*
- *Prolific Offenders*
- *Repeat and Vulnerable Victims*

SHOTS FIRED

City Wide Shots Fired

Last 30 Days **38**

North Pct 4

West Pct 4

East Pct 8

South Pct 19

SW Pct 3

Year-to-Date **74**

Guns Recovered

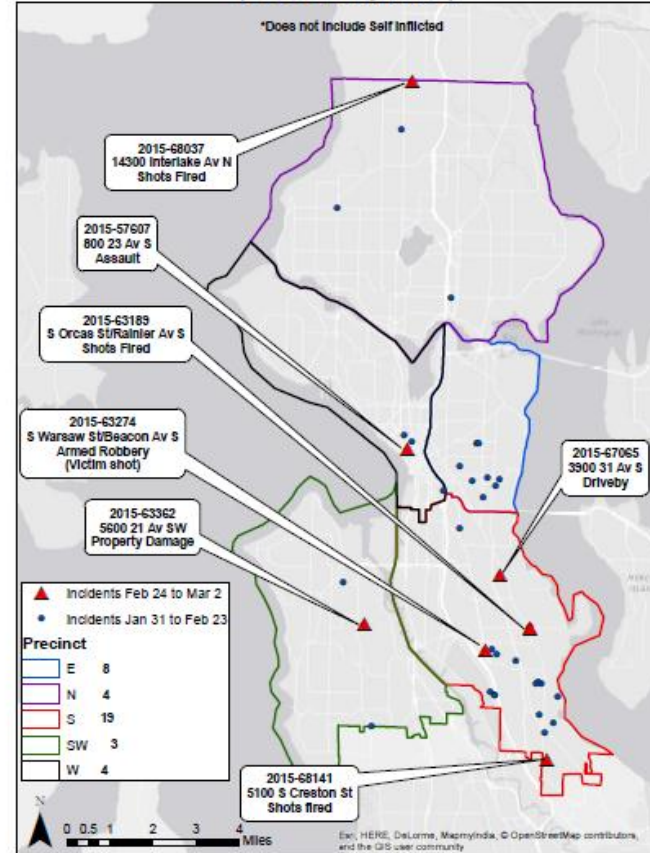
Feb 2015

By Patrol 34

Other Units 31

Year-to-Date **153**

Shots Fired January 31, 2015 to March 2, 2015
(38 GOs citywide*)



CITYWIDE MAJOR CRIME

Citywide Major Crime from January 1, 2015 to February 28, 2015

Crime Category	Jan-2015	Feb-2015	YTD 2015	YTD 2014	# Change	% Change
Homicide	0	1	1	3	-2	-67%
Rape	4	12	16	13	3	+23%
Robbery	132	127	259	206	53	+26%
Aggravated Assault	148	161	309	290	19	+7%
Residential Burglary	381	318	699	846	-147	-17%
Non-Residential Burglary	149	127	276	296	-20	-7%
Larceny-Theft (Excludes Car Prowl)	1000	747	1747	1831	-84	-5%
Car Prowl	1113	902	2015	2419	-404	-17%
Motor Vehicle Theft	375	285	660	798	-138	-17%
Total	3302	2680	5982	6702	-720	-11%

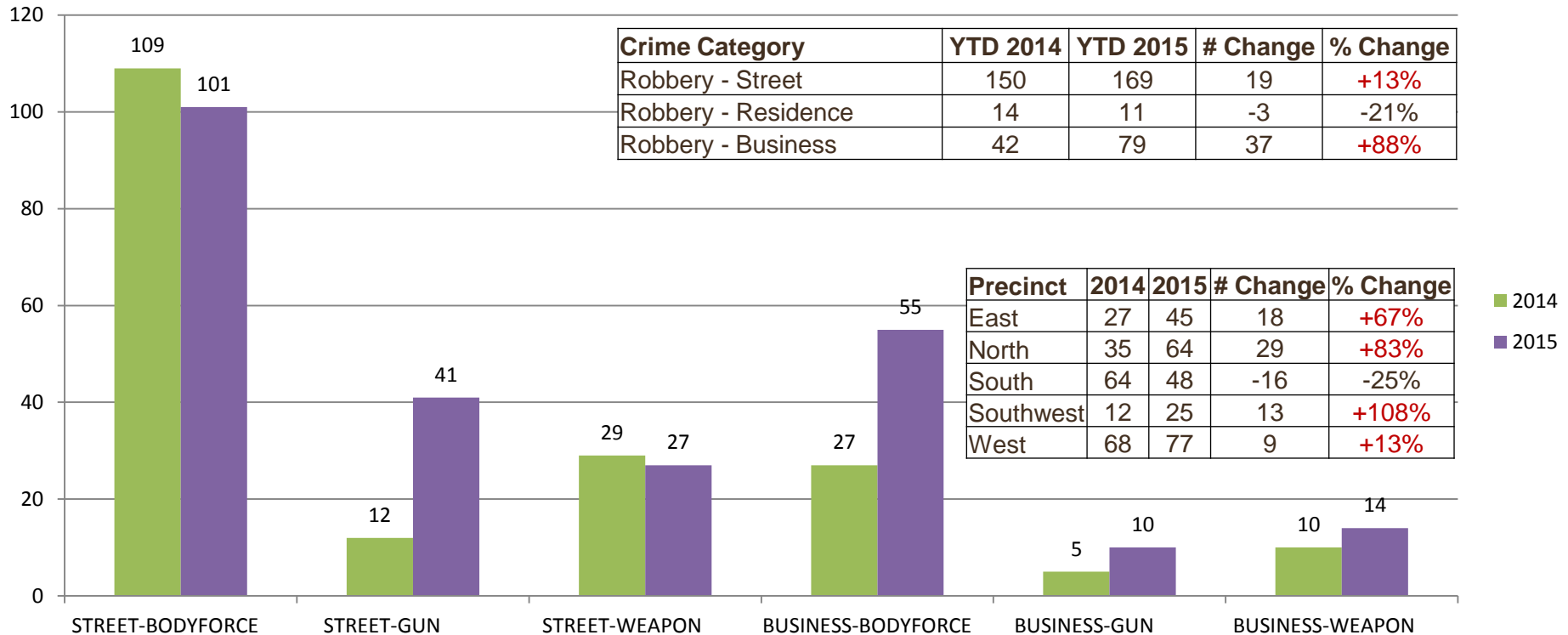
Data counts are dynamic and subject to change based on transcription and reclassification.

Crime categories are incident-based (not victim) and follow the FBI UCR hierarchy classification guideline.

Data was extracted on 3/3/15 from SPD RMS (Reposit) and exclude unfounded and non precinct-based locations.

CITYWIDE ROBBERY

Robbery - Street and Business by Weapon Type January 1 to February 28 (2014 and 2015)



PRECINCT UPDATES

North

NORTH PRECINCT MAJOR CRIME

North Precinct Major Crime from February 1, 2015 to February 28, 2015

Week by Week Detail NORTH		WEEK 1 02/01 - 02/07	WEEK 2 02/08 - 02/14	WEEK 3 02/15 - 02/21	WEEK 4 02/22 - 02/28	Total	
Person Crime	Assault-Aggravated (Excludes DV)	7	6	8	9	30	
	DV Assault - Aggravated	1	4	5	4	14	
	Homicide	0	0	0	0	0	
	Rape	2	1	2	1	6	
	Robbery	15	3	12	9	39	
Subtotal:		25	14	27	23	89	
Property Crime	Burglary - Non-Residential	12	14	8	10	44	
	Burglary - Residential	25	20	25	30	100	
	Carprowl/Theft-Auto Accessories-Auto Parts-License Plate	56	63	60	59	238	
	Larceny-Theft	65	62	67	68	262	
	Motor Vehicle Theft	35	44	21	26	126	
Subtotal:		193	203	181	193	770	
GRAND TOTAL:		218	217	208	216	859	

[Download](#)

Data counts are dynamic and subject to change based on transcription and reclassification.

Crime categories are incident-based (not victim) and follow the FBI UCR hierarchy classification guideline.

Data was extracted on 3/3/15 from SPD RMS (Reposit) and exclude unfounded and non precinct-based locations.

NORTH PRECINCT STREET ROBBERY / NON DV AGG. ASSAULTS

Feb 1-28, 2015

Street Robbery: 23

Committed with a Gun: 5

Most Active Time: 2000-0100 hours

Number of Arrest: 2

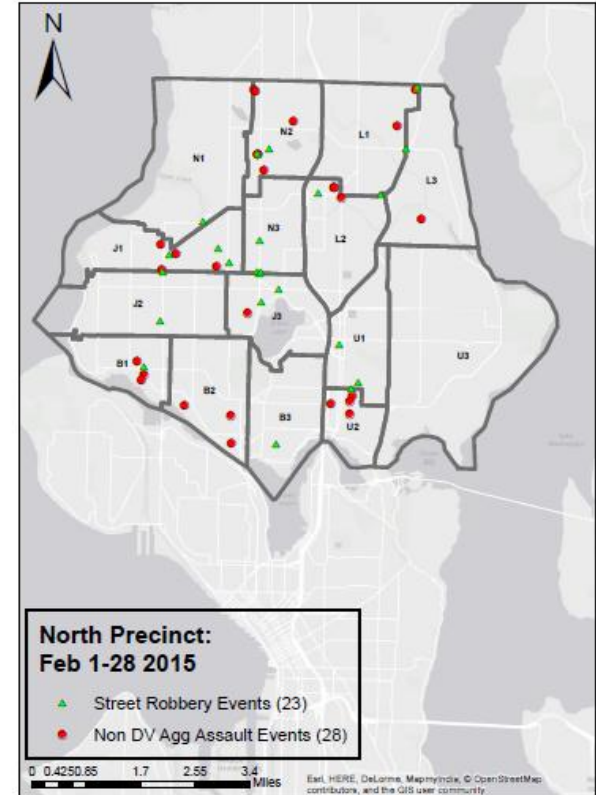
Non DV Agg Assaults: 28

Committed with a Gun: 6

Most Active Time: No Distinct Time Block

Number of Arrest: 13

North Precinct: Street Robbery / Non DV Agg Assaults



PRECINCT UPDATES

A large, dark, circular sculpture with a central hole, set against a background of a lake, trees, and the Space Needle. The sculpture is made of a dark, possibly black, material and has a complex, organic shape with several smaller circular indentations. The central hole is perfectly circular and frames a view of the Space Needle in the distance. The background shows a body of water, green trees, and a blue sky with white clouds.

East

EAST PRECINCT MAJOR CRIME

East Precinct Major Crime from February 1, 2015 to February 28, 2015

Week by Week Detail EAST

	Crime Category	WEEK 1 02/01 - 02/07	WEEK 2 02/08 - 02/14	WEEK 3 02/15 - 02/21	WEEK 4 02/22 - 02/28	Total	
Person Crime	Assault-Aggravated (Excludes DV)	6	10	3	8	27	
	DV Assault - Aggravated	0	1	3	4	8	
	Homicide	0	0	0	0	0	
	Rape	1	0	0	0	1	
	Robbery	8	6	6	2	22	
Subtotal:		15	17	12	14	58	
Property Crime	Burglary - Non-Residential	5	7	1	3	16	
	Burglary - Residential	10	20	13	16	59	
	Carprowl/Theft-Auto Accessories-Auto Parts-License Plate	49	66	56	39	210	
	Larceny-Theft	29	26	36	30	121	
	Motor Vehicle Theft	13	7	14	7	41	
Subtotal:		106	126	120	95	447	
GRAND TOTAL:		121	143	132	109	505	

[Download](#)

Data counts are dynamic and subject to change based on transcription and reclassification.

Crime categories are incident-based (not victim) and follow the FBI UCR hierarchy classification guideline.

Data was extracted on 3/3/15 from SPD RMS (Reposit) and exclude unfounded and non precinct-based locations.

EAST PRECINCT ROBBERY

Updated-Robberies in Cal Anderson/Pike/Pine Area

Number of Reports: 14 total, 2 new since last bulletin

Date Range: January 1-February 25

Time Range: most commonly 2245-0400

Most Common Day of Week: Saturday

Most Common Items Taken: Wallet and cell phone

Previous Bulletin: 1/23/15, 2/3/15, 2/9/15

