



Seattle Police Department

SEA STAT



DATA-DRIVEN

December 21, 2016



PRINCIPLES OF SEASTAT

1. **Accurate and Timely Information**

Know what is happening

2. **Effective Tactics**

Have a plan

3. **Rapid Deployment**

Do it quickly

4. **Relentless Follow-up and Assessment**

If it works, do more. If not, do something else

FORMULATING CRIME REDUCTION STRATEGIES

Focus on...

- *Problem Locations*
- *Prolific Offenders*
- *Repeat and Vulnerable Victims*



CITYWIDE MAJOR CRIME

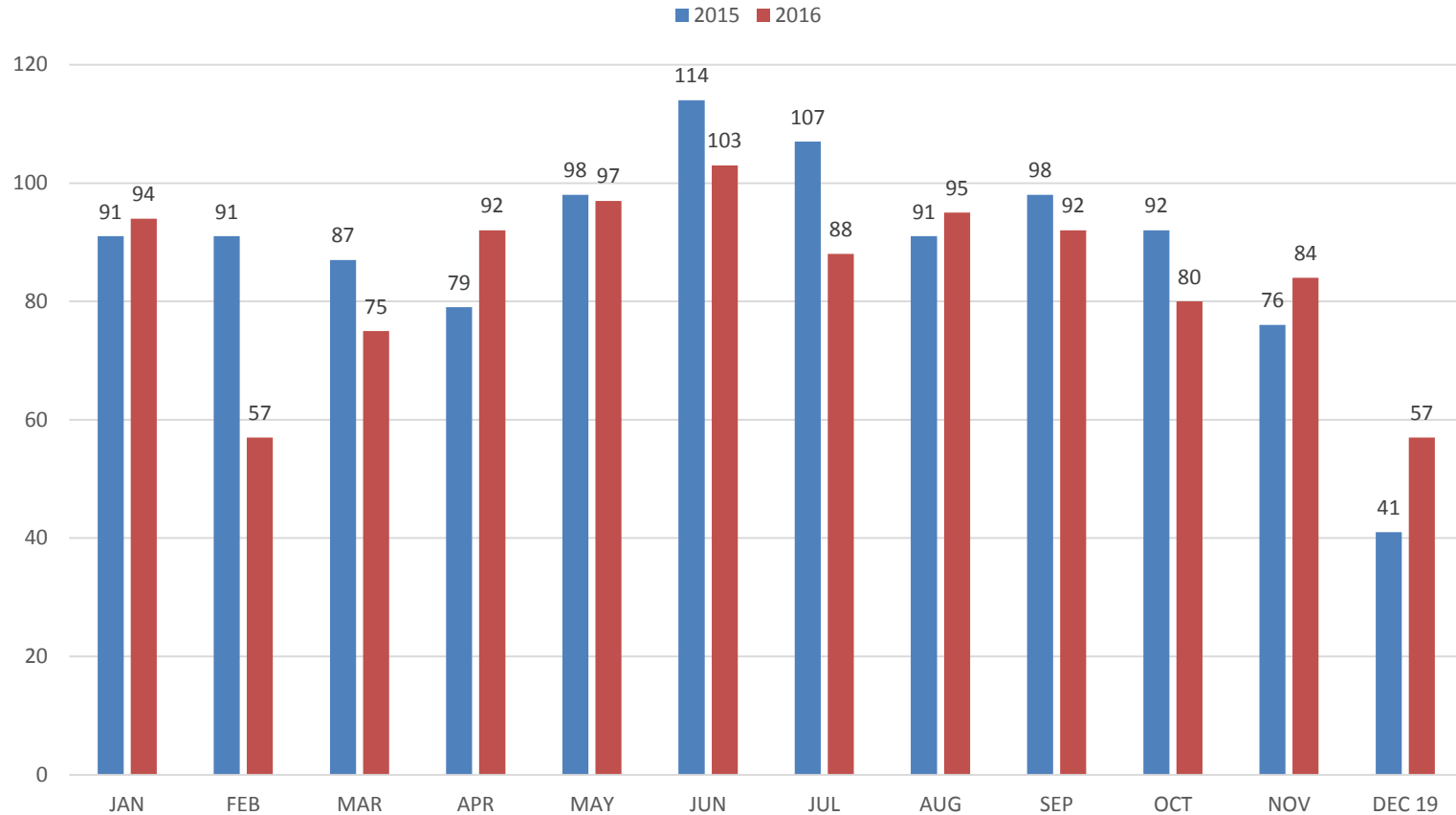
28 Day & Year to Date (YTD) Detail

Crime Category	28 DAY Total	28 DAY Range	YTD 12/17 2016	YTD Range	YTD 12/17 2015	YTD Amount Change	YTD % Change
Homicide	2	0 - 2	19	20 - 24	24	-5	-21%
Rape	15	5 - 9	163	94 - 116	108	55	+51%
Robbery	118	107 - 129	1,494	1379 - 1541	1,497	-3	-0%
DV Assault - Aggravated	47	39 - 53	577	535 - 657	545	32	+6%
Assault-Aggravated (Excludes DV)	127	80 - 102	1,508	1105 - 1357	1,428	80	+6%
Person Crime TOTAL	309	253 - 273	3,761	3234 - 3594	3,602	159	+4%
Burglary - Residential	351	369 - 503	4,881	4596 - 5262	5,283	-402	-8%
Burglary - Non-Residential	162	130 - 188	2,197	1691 - 1937	1,971	226	+11%
Larceny-Theft	783	839 - 1033	11,613	10792 - 12396	12,158	-545	-4%
Carprowl/Theft-Auto Accessories-Auto Parts-License Plate	1,099	794 - 1272	13,860	10410 - 14198	13,201	659	+5%
Motor Vehicle Theft	366	235 - 355	3,858	3093 - 4715	3,613	245	+7%
Property Crime TOTAL	2,761	2509 - 3209	36,409	31004 - 38086	36,226	183	+1%
GRAND TOTAL	3,070	2780 - 3464	40,170	34280 - 41638	39,828	342	+1%

Operations Dashboard Snapshot – 12/20/16

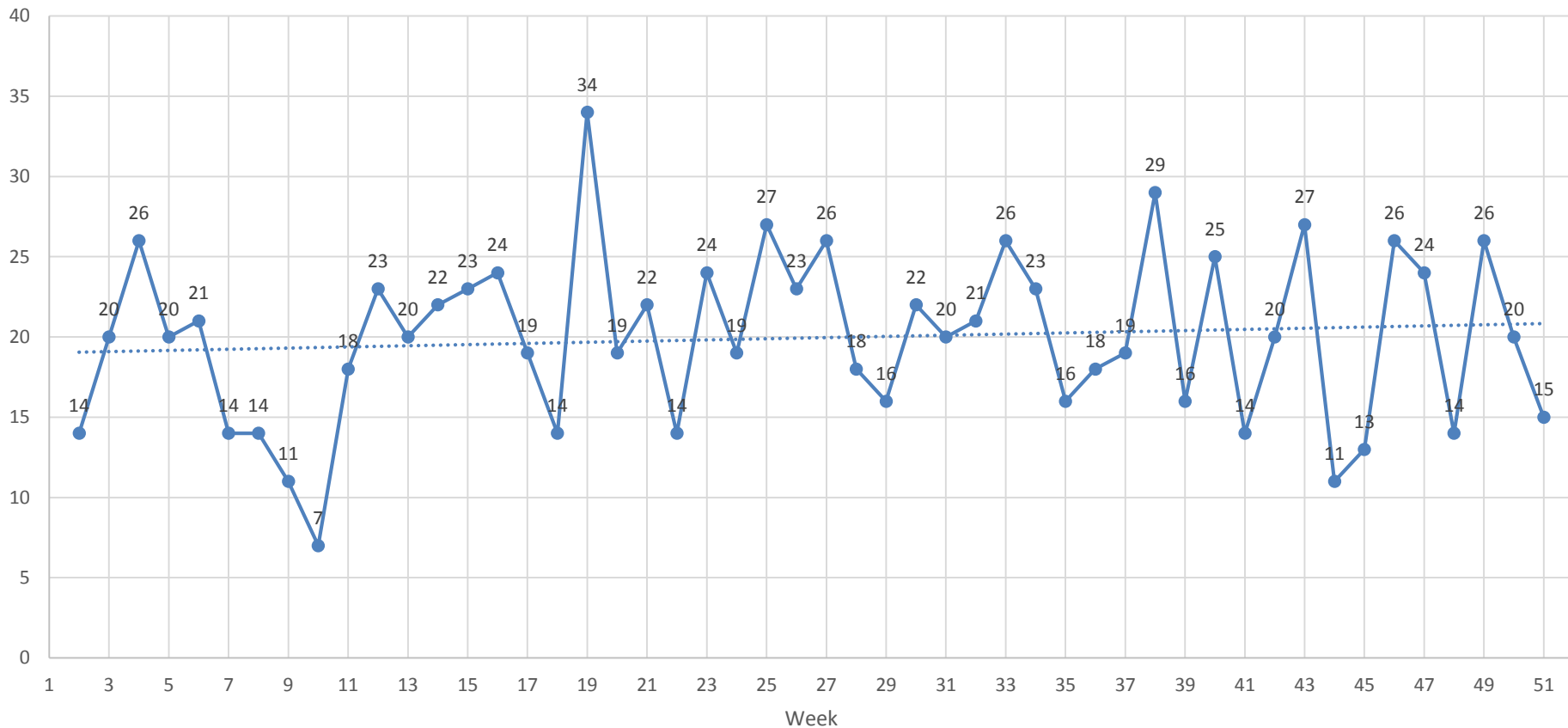
STREET AND RESIDENTIAL ROBBERY

Street and Residential Robbery by Month and Year



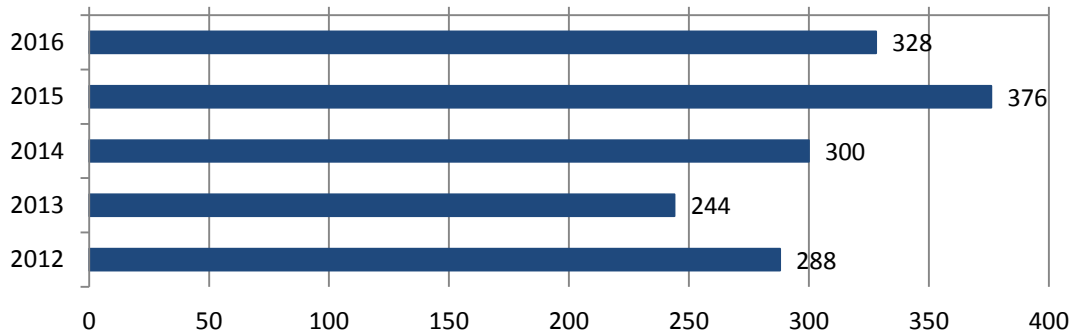
STREET AND RESIDENTIAL ROBBERY

2016 Street and Residential Robbery by Week

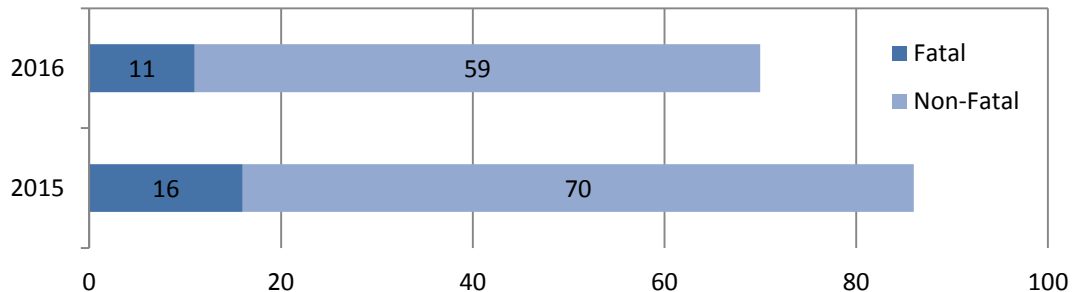


SHOTS FIRED REPORT

Shots Fired YTD January 1 to December 19 (2012-2016)



Shootings by Injury Type YTD January 1 to December 19 (2015 and 2016)



Shots Fired include injury-related gun crime and evidence of, or eyewitness to, a firearm-related incident.

Shootings are firearm-related incidents that resulted in injury or death.

Self-inflicted and officer-involved shootings are not included. Report inception: 2012.

Shots Fired November 22, 2016 to December 19, 2016 (19 GOs citywide*)

*Does not include most Self Inflicted or OIS

28 Day Overview

