

**FUTURE  
UPZONING OF  
SINGLE FAMILY  
TO LOW RISE  
RESIDENTIAL**

ACTIVE PLAY AREA NEEDS 30' SETBACK FROM SINGLE FAMILY ZONE (SF 5000)

Remove/thinning some trees to improve visibility and eliminate hiding spots

- Improve existing lighting  
- Expand play area  
- Seating and viewing area



- + NICE OPEN LAWN FOR FREE PLAY
- + NICE EVERGREEN TREE
- GRAFFITI AT FARTHER CORNER
- POOR VISIBILITY INTO PARK AT WEST ENTRANCE
- ILEGAL DUMPING AT NW BEHIND BAMBOO

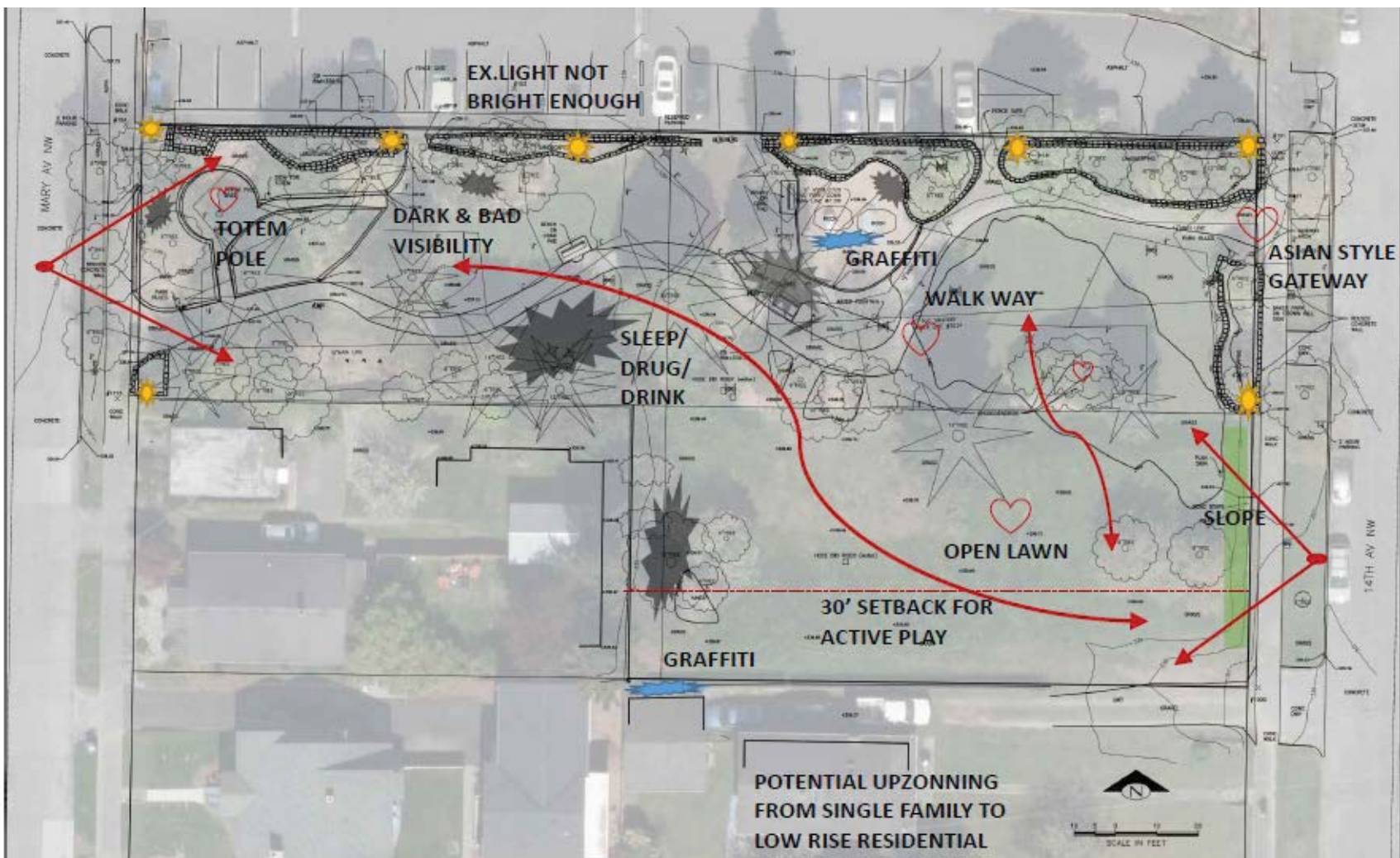
- ILEGAL BEHAVIORS AT TREE GROVE
- PLAY AREA TOO SMALL
- ROCKS GOT GRAFFITI OFTEN
- SLEEP AROUND CORNER
- PICNIC TABLE / TRAIL IS NOT ADA ACCESSIBLE
- DECORATIVE ASIAN STYLE LIGHTING POLES NOT FUNCTION WELL
- STEEPER SLOPE AT EDGE NOT INVITING



WEST ENTRANCE



+ ASIAN STYLE EAST ENTRY GATEWAY



POTENTIAL UPZONNING  
FROM SINGLE FAMILY TO  
LOW RISE RESIDENTIAL

CAUTION - CALL 811  
UTILITY NOTIFICATION CENTER  
BEFORE YOU DIG!  
WWW.CALL811.COM

NO. 1	REVISION - AS BUILT	DATE
NO. 2		
NO. 3		
NO. 4		
NO. 5		
NO. 6		

REVISION: \_\_\_\_\_ DATE \_\_\_\_\_  
 ALL work shall be in accordance with the City of Seattle Standard  
 Plans and Specifications or what is the case when there are  
 discrepancies in these documents.

**Seattle Parks and Recreation**  
 Survey + Mapping  
 800 Myford Avenue S., 2nd Floor  
 Seattle, WA 98134 - 1326

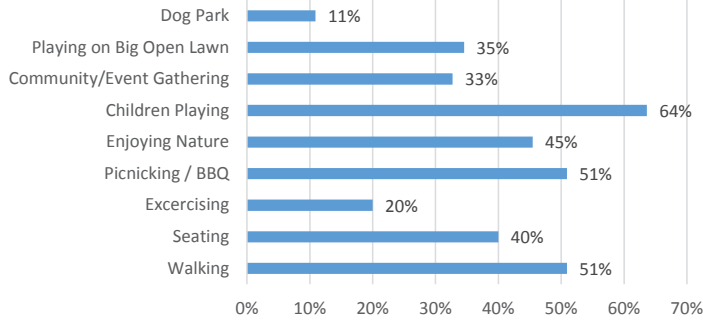


**Seattle Parks & Recreation**

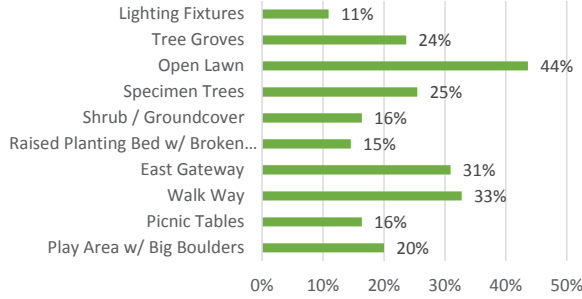
BAKER PARK ADDITION  
 2017 BAKER PARK  
 EXISTING CONDITIONS

PER NEW JOB	DATE 05/15/2017
DRAWN JCS	SHEET 2 of 8
CHECKED TSI	EC 1.0
APPROVED BY [Signature]	
CONTRACT NO. 8888	
SCALE: 1" = 10'	

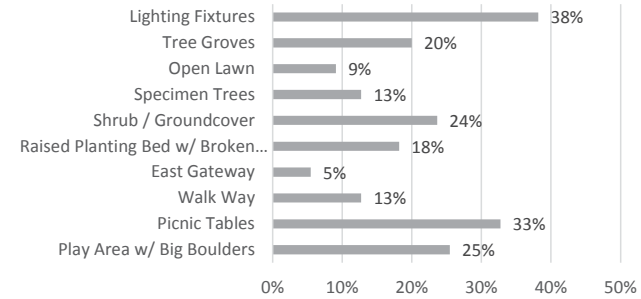
### Preferred Activities



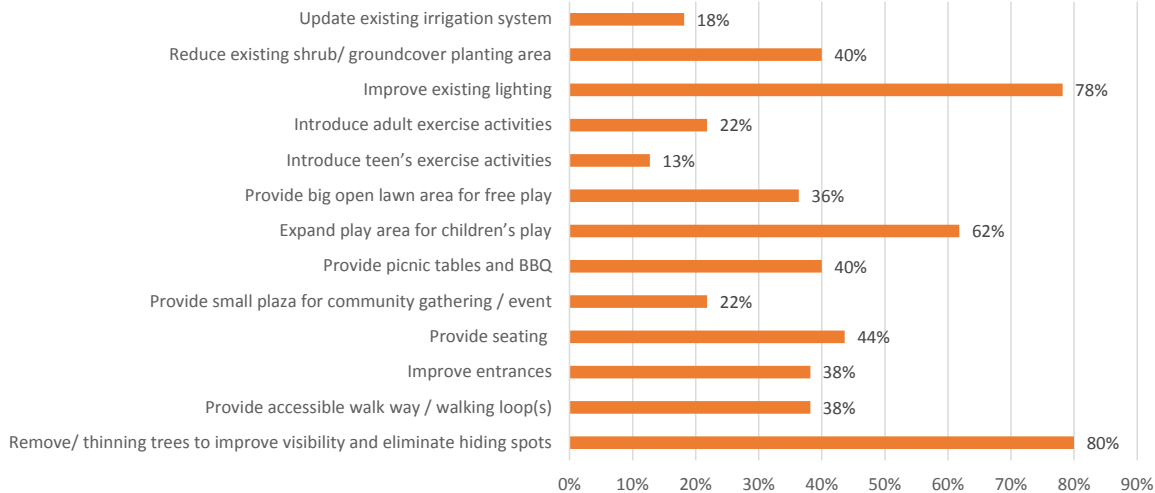
### What do you like about the existing park?



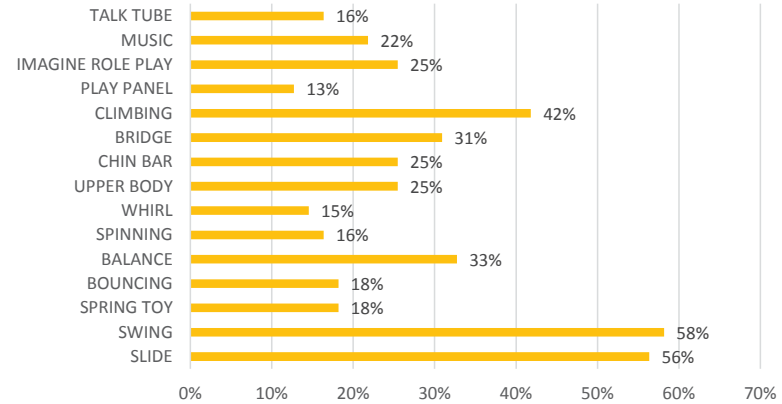
### What do you dislike about the existing park?

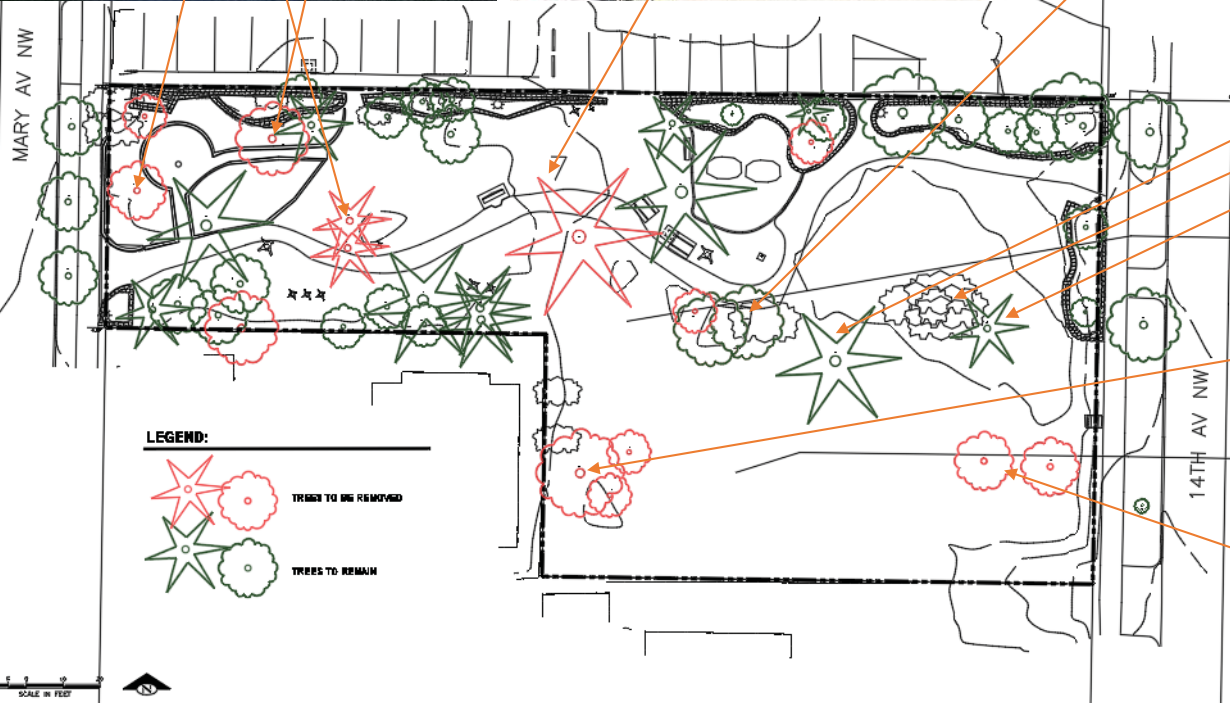
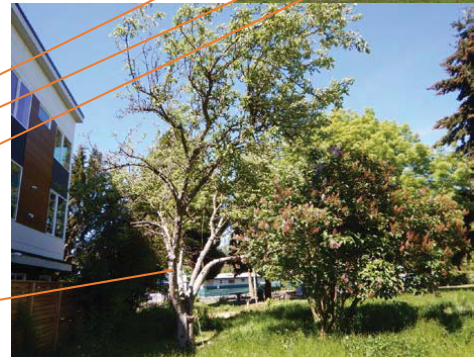


### Desired Improvements



### Play Element Types





**TREE REMOVAL**



**CONCEPT PLAN A**



**CONCEPT PLAN B**

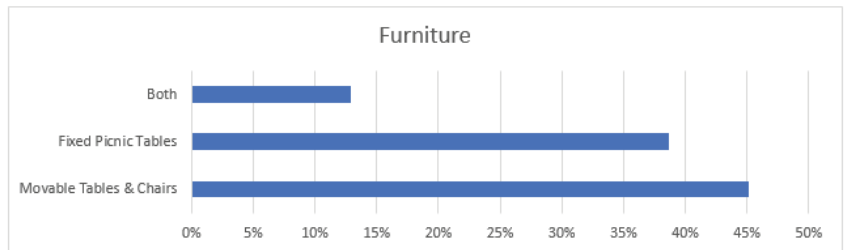
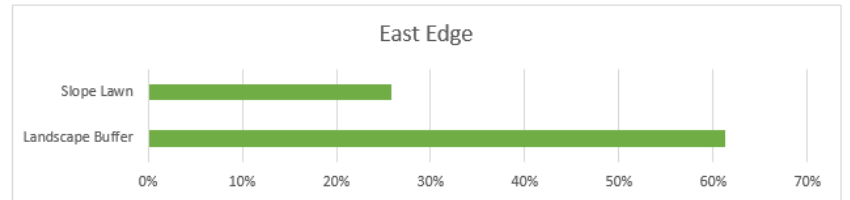
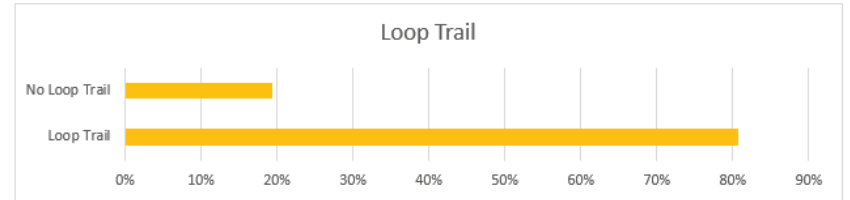
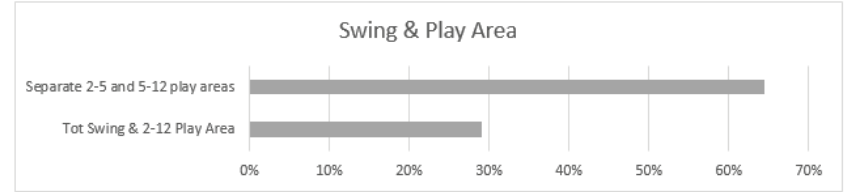
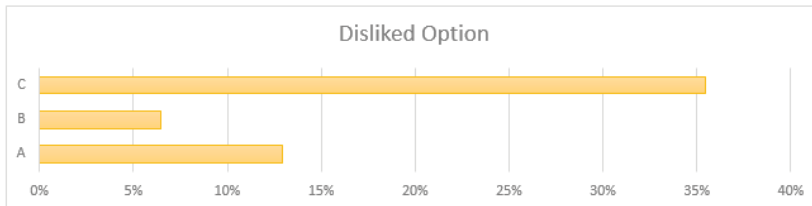
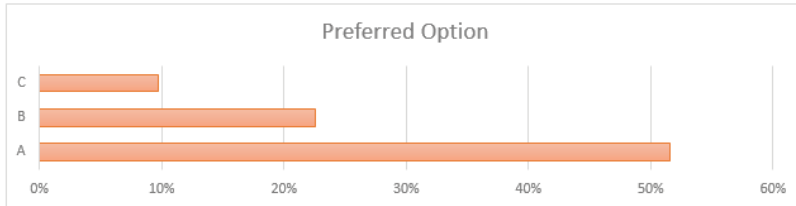
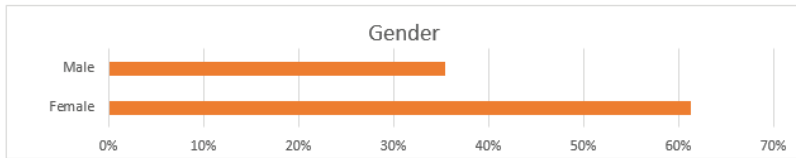
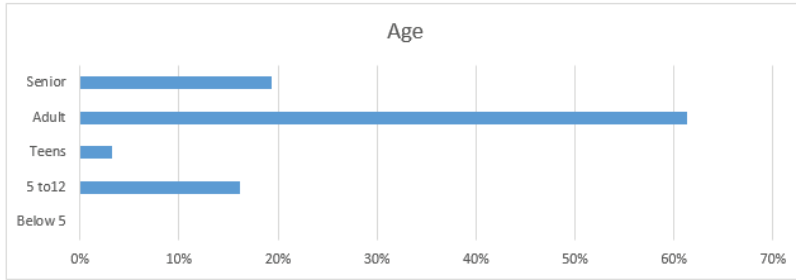


**CONCEPT PLAN C**  
BAKER PARK ADDITION

# Survey Result for Baker Park Addition

From 2<sup>nd</sup> Public Meeting on August 12, 2017

Total Completed Survey: 31

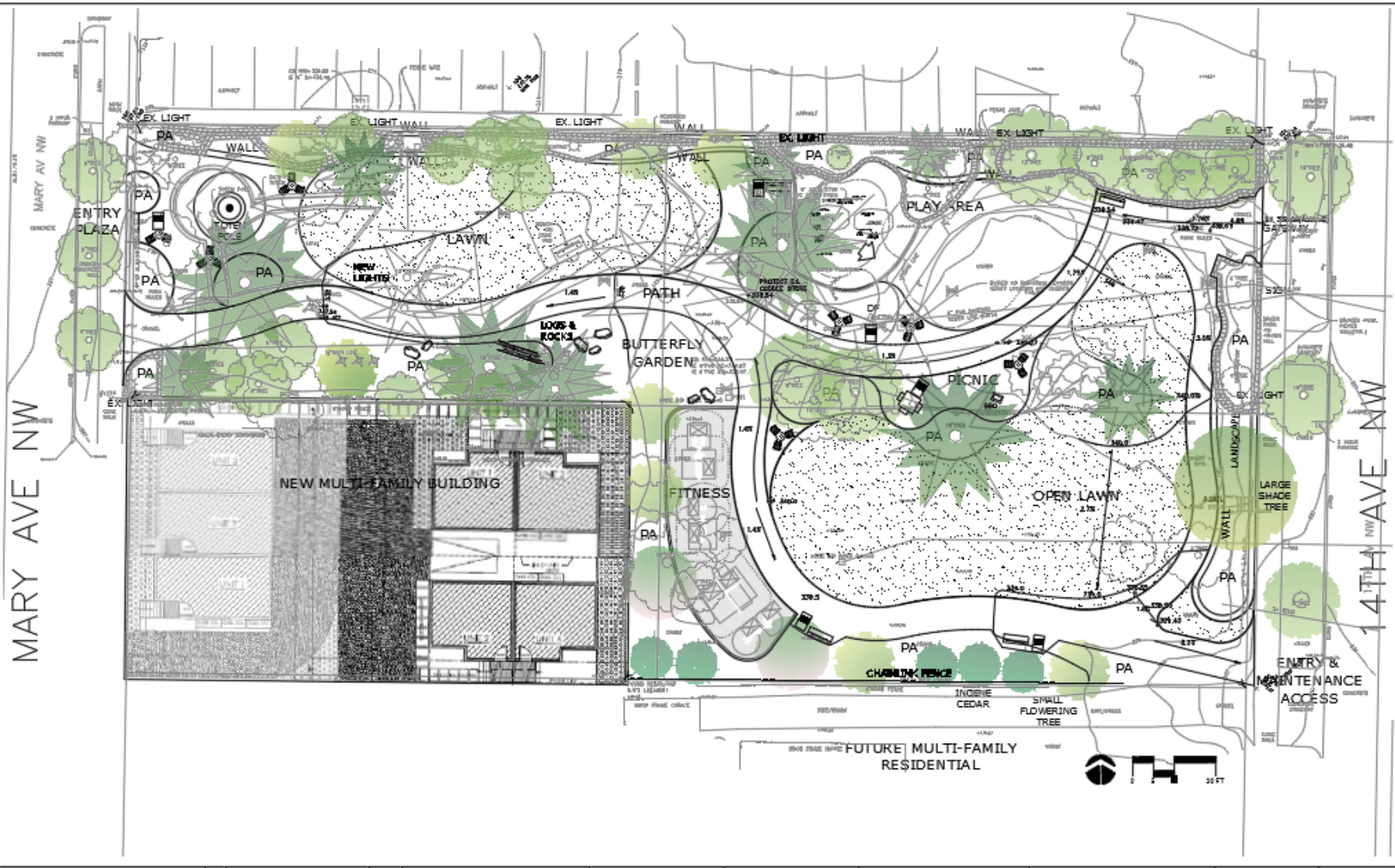






MARY AVE NW

14TH AVE NW



NEW MULTI-FAMILY BUILDING

FITNESS

CHALKING FENCE

FUTURE MULTI-FAMILY RESIDENTIAL



ENTRY PLAZA

LAWN

BUTTERFLY GARDEN

PICNIC

PLAY AREA

OPEN LAWN

ENTRY & MAINTENANCE ACCESS

LANDSCAPE WALL

LARGE SHADE TREE

SMALL FLOWERING TREE

INCENSE CEDAR

PATH

LOGS & ROCKS

NEW LIKE-102

EX LIGHT

EX LIGHT WALL

EX LIGHT

EX LIGHT

EX LIGHT

EX LIGHT

WALL

WALL

WALL

WALL

PA

PA

PA

PA

PA

PA

PA

PA

PA

PA

PA

PA

PA

PA

PA

PA

PA

PA

PA

PA

PA

PA

PA

PA

PA

PA

PA

PA

PA

PA

PA

PA

PA

PA

PA

PA

PA

PA

PA

PA

PA

PA

PA

PA

PA

PA

PA

PA

PA

PA

PA

PA

PA

PA

PA

PA

PA

PA

PA

PA

PA

PA

PA

PA

PA

PA

PA

PA

PA

PA

PA

PA

PA

PA

PA

PA

PA

PA

PA

PA

PA

PA

PA

PA

PA

PA

PA

PA

PA

PA

PA

PA

PA

PA

PA

PA

PA

PA

PA

PA

PA

PA

PA

PA

PA

PA

PA

PA

PA

PA

PA

PA

PA

PA

PA

PA

PA

PA

PA

PA

PA

PA

PA

PA

PA

PA

PA

PA

PA

PA

PA

PA

PA

PA

PA

PA

PA

PA

PA

PA

PA

PA

PA

PA

PA

PA

PA

PA

PA

PA

PA

PA

PA

PA

PA

PA

PA

PA

PA

PA

PA

PA

PA

PA

PA

PA

PA

PA

PA

PA

PA

PA

PA

PA

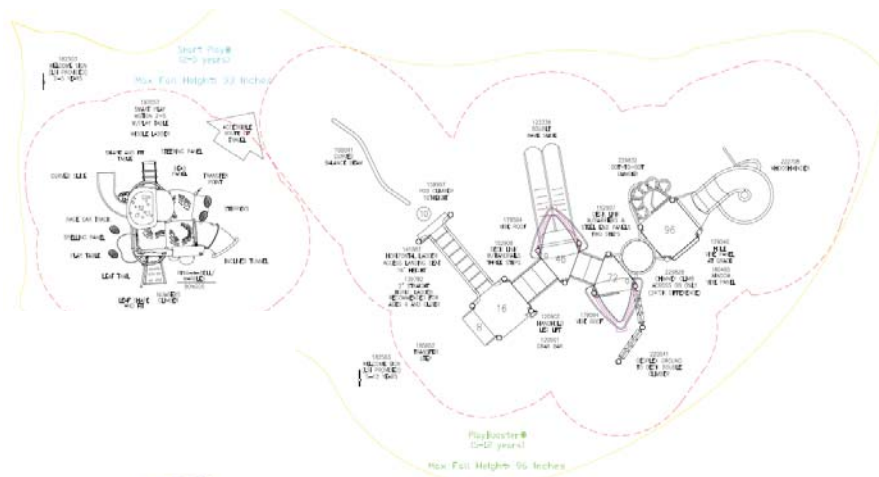
PA

## Design Option - 1 | Modern Play



## Play Highlights





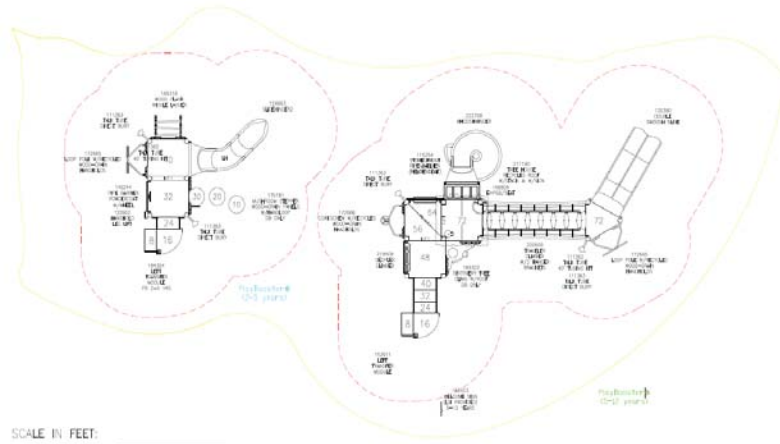
Baker Park  
 Design Option - 1 | Modern Play

# Design Option - 2 | Nature Inspired Play



## Play Highlights

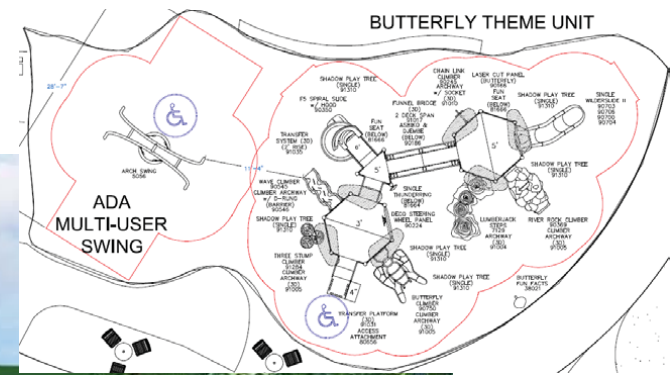




SCALE IN FEET:  

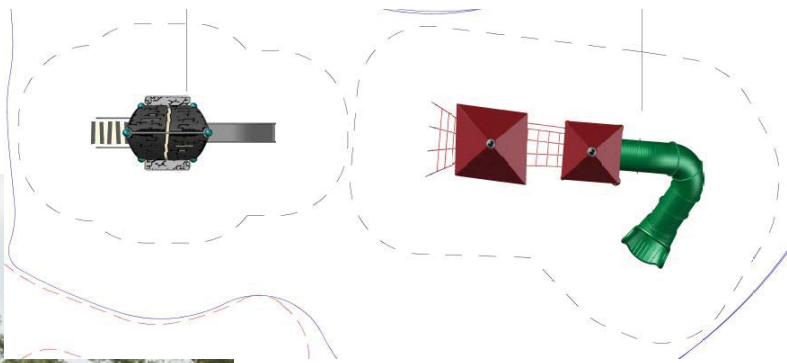



# Design Option 3 – Swing & Butterfly Themed Nature Play



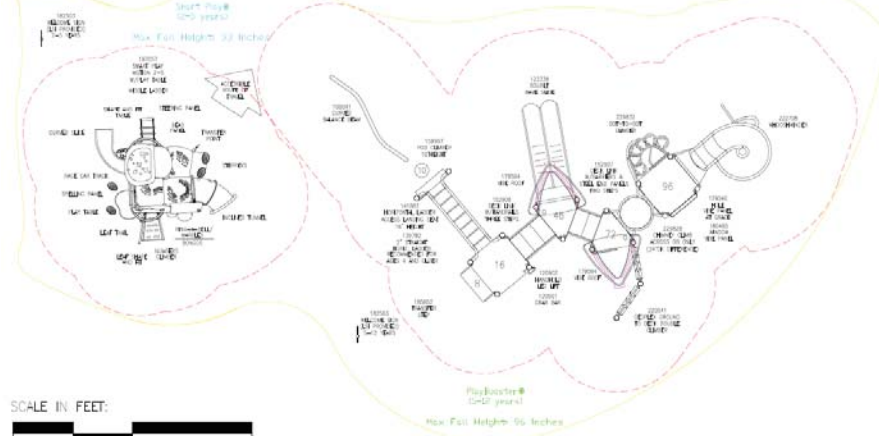


Design Option 4 – Modern Tree House Play Area

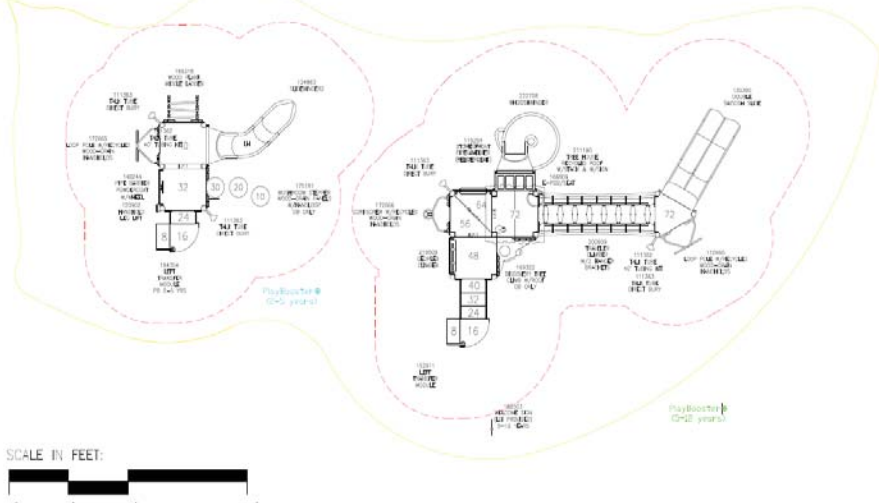




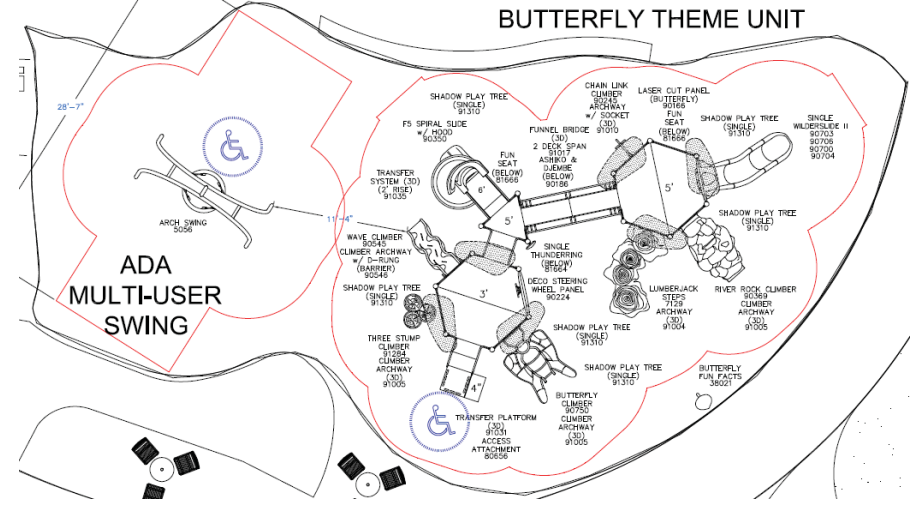
## Design Option 1 – Modern Play



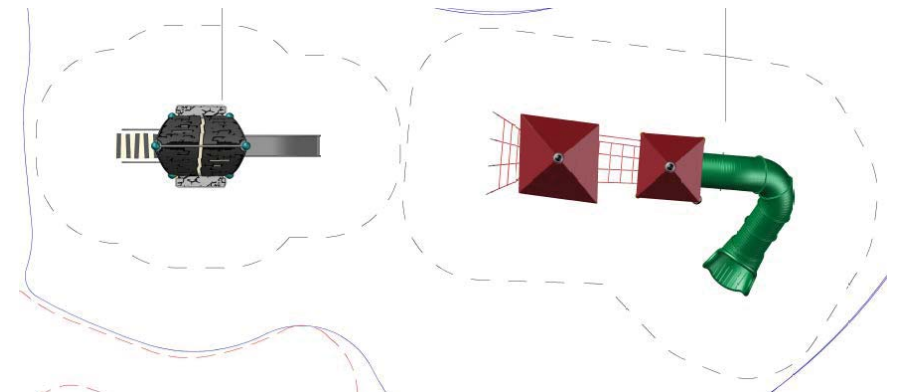
## Design Option 2 – Nature Inspired Tree House Play



## Design Option 3 – Swing & Butterfly Inspired Nature Play



## Design Option 4 – Modern Tree House Play



Presented By



# Fitness Area Option A



A FLEXCORE COMPANY

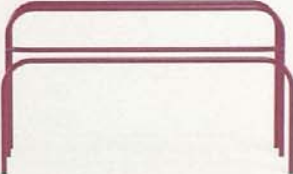
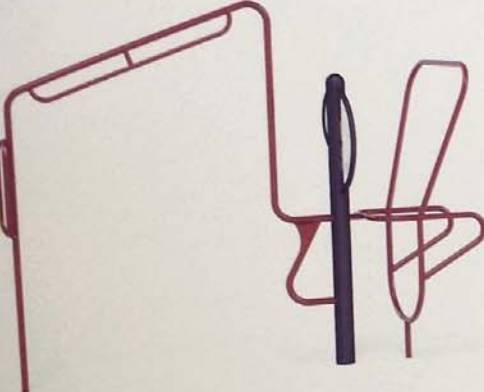


[www.gametime.com](http://www.gametime.com)

# BAKER PARK - FITNESS

800.235.2440  
Representative: Gary Max

Fitness Area Option B



Health Highlights



ELLIPTICAL MACHINE



AB CRUNCH / LEG LIFT



PULL-UP BAR



STRETCH BAR



PARALLEL BARS



CHEST / BACK PRESS



**FITNESS ELEMENTS**



**Seattle  
Parks & Recreation**

**SmartSpace  
Engineering**  
Engineering + Design Services  
800 Newport Avenue S., 3rd Floor  
Seattle, WA 98148-2538

