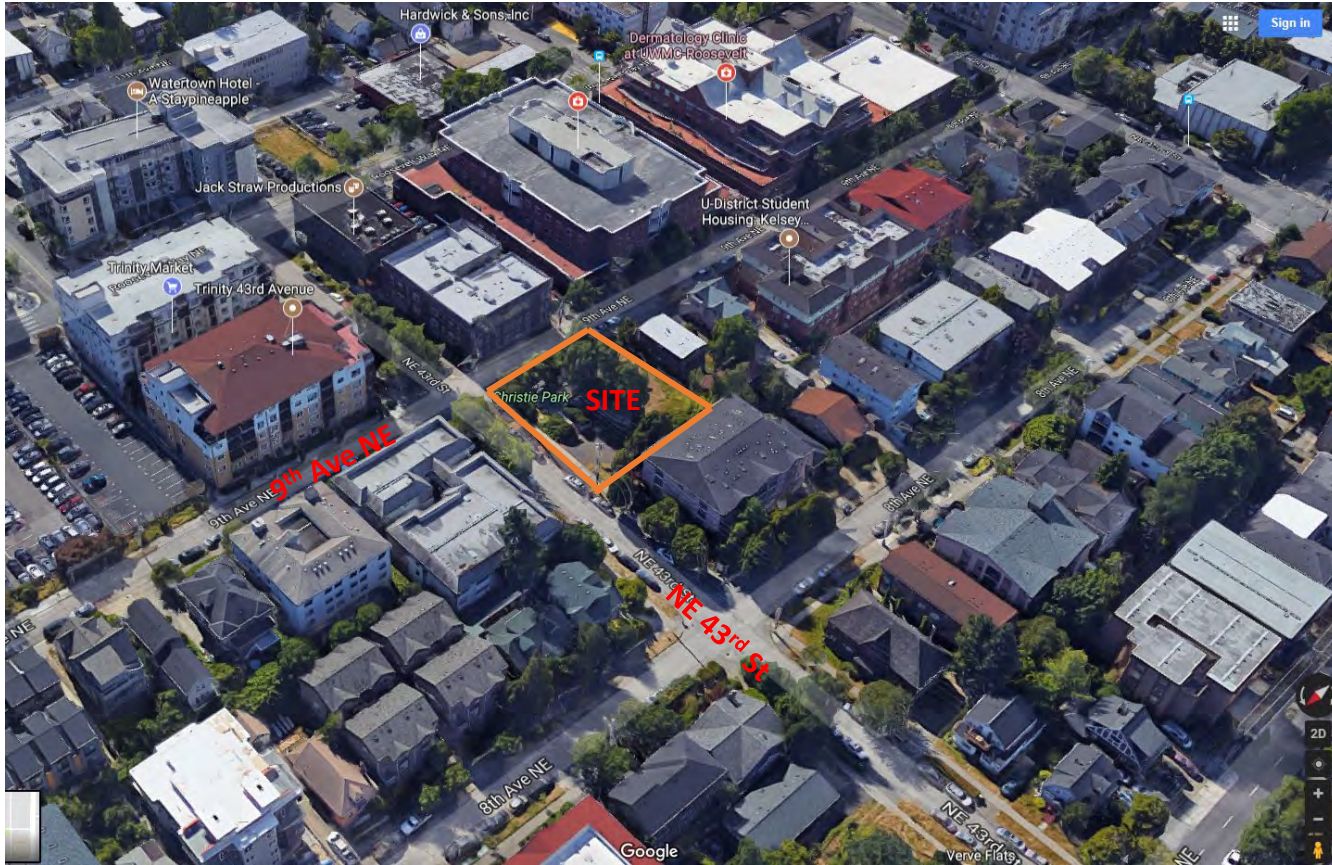
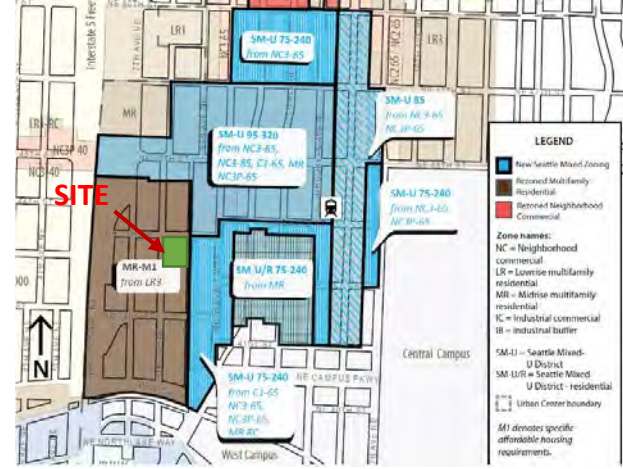


Christie Park Addition Project

LOCATION AND CONTEXT



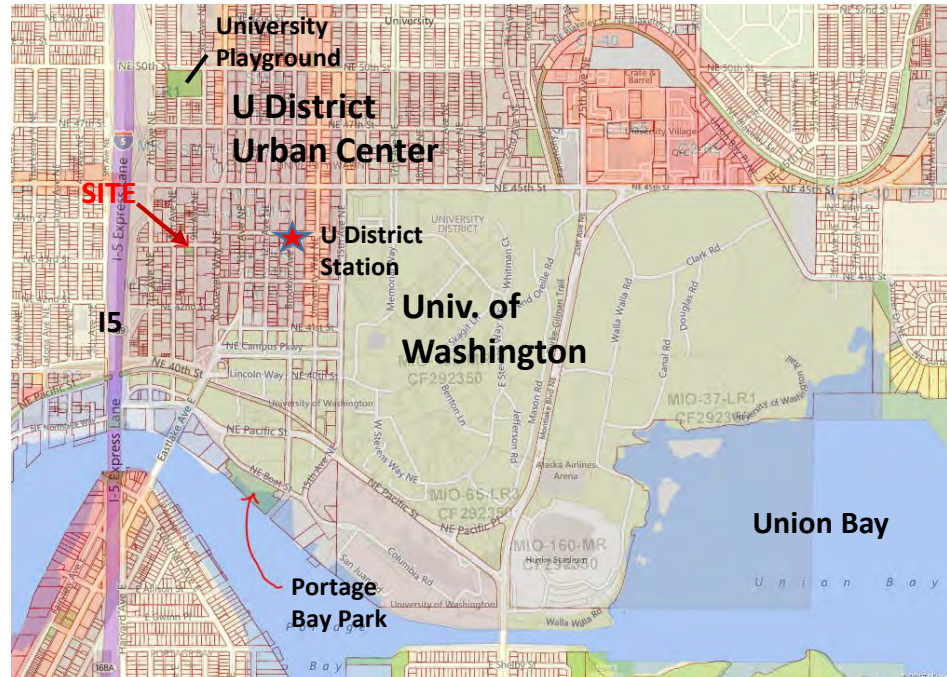
- An unique young college student community with diverse groups
- 75% of total population is between the ages of 18 and 29
- Population who are persons of color: **46.02 %**; Asian (**31%**)
- Renter-occupied: **82.4%**, Owner-occupied: **9.4%**



LIGHT RAIL STATION & UPZONNIG:

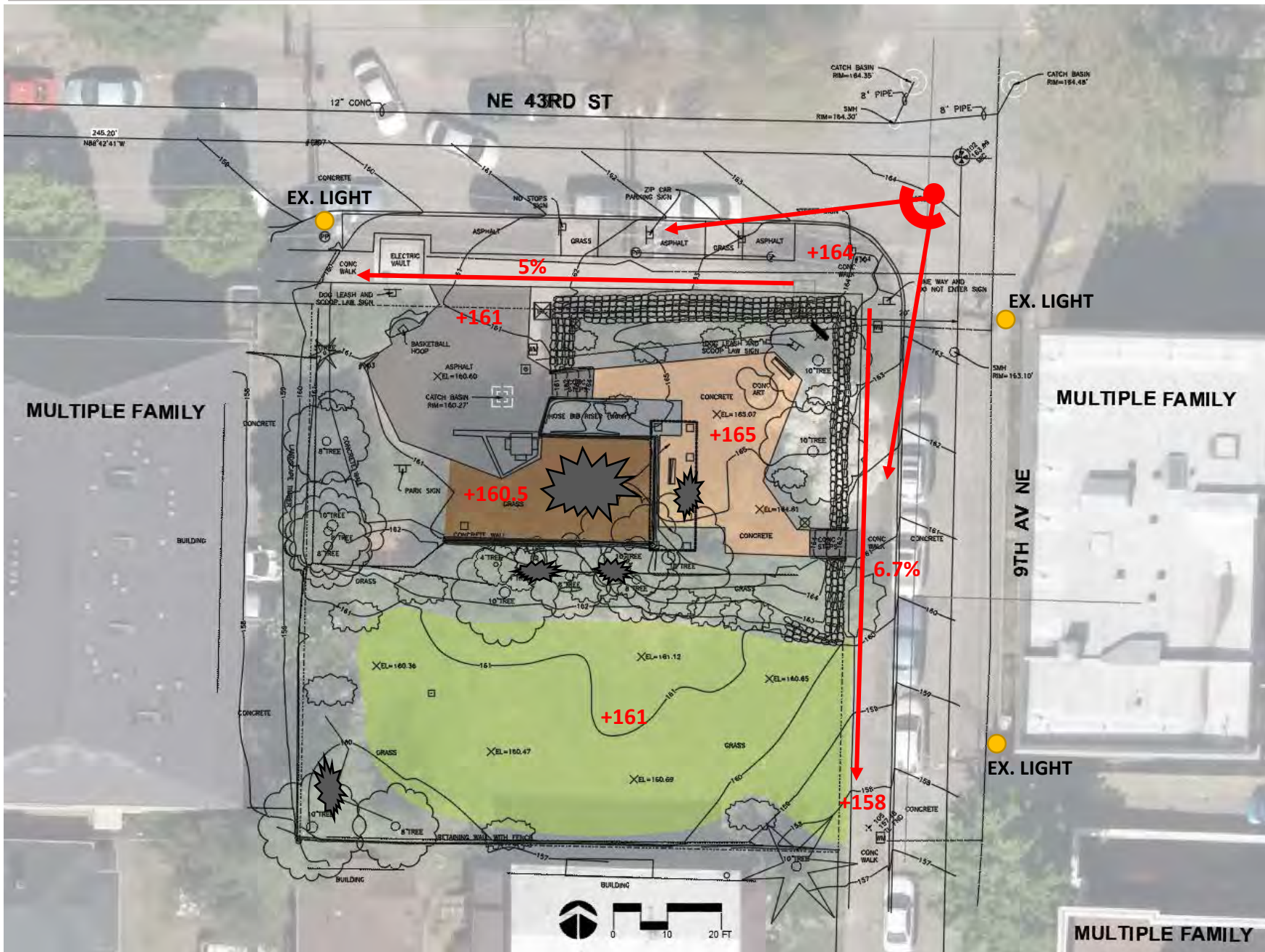
- TALLER BUILDINGS
- HIGHER DENSITY
- LESS SUNSHINE, MORE SHADE
- MORE PEDESTRIAN TRAFFIC
- MORE NEEDS FOR OPEN SPACE

ADDITIONAL LOT was purchased in 2012 through Parks proactive approach to fill this open space gap and former owner's willingness to contribute to the open space improvement in this high density area including an offer for a potential art piece to enrich park design and honor the sister city relationship with Kaohsiung City.



- FUTURE 43RD GREEN STREET PLAN:**
- + COMMUNITY LED INTERSECTION PAINTING
 - + PERMEABLE PARK EDGE AND SIDEWALK
 - + IMPROVED STREETScape
 - + PEDESTRIAN STREET SITE FURNISHINGS

EXISTING CONDITIONS & SITE ANALYSIS



- CURRENT PARK IS NOT INVITING
- RAISED SEATING AREA BLOCKS VIEWS INTO PARK AND IS NOT ACCESSIBLE
- HIDING CORNER BEHIND RAISED SEATING AREA AND EX. WALL CREATES CRIME AND SAFETY ISSUES
- EX. TALL WALL DISCONNECT TWO LOTS
- SMALL PARCEL SIZE (100'X100')
- NO LIGHTING IN THE PARK, 3 EX STREET LIGHTS
- 15% IMPERVIOUS SURFACE LIMIT FOR NEW LOT
- GRADE DROP FROM +164 TO +158 AT 6% ALONG 9TH AVE. AND TO 160 AT 5% ALONG 43RD ST.
- GRADE DROP TO ADJACENT PARCELS AT SOUTH
- EX BASKETBALL
- NICE EX. DOGWOOD TREE AT NE AREA
- BIRCH TREES IN THE MIDDLE SEPARATE TWO LOTS & BLOCK VIEWS.
- EX. BAMBOO AT SOUTH WEST AREA, ANOTHER SLEEPING CORNER
- EX. SITE AMENITIES (Basketball, Drinking Fountain, Picnic Table, Shelter, Bench, etc.)
- EX. ART FEATURES (Bamboo Mural on the Wall)
- EX SUNNY LAWN AREA, TREES, & PLANTS
- ELECTRIC VAULT AT SIDEWALK ALONG NE 43RD ST
- DETERIORATED EXISTING SIDEWALK
- NO IRRIGATION
- + POTENTIAL ART ELEMENT ENHANCEMENT
- + FUTURE GREEN STREET IMPROVEMENT AT 43RD ST
- + AN UNIQUE YOUNG COLLEGE STUDENT COMMUNITY WITH DIVERSE GROUPS



What do you like about the existing park?

- Open lawn (35%)
- Trees / Plants (25%)



What do you dislike about the existing park?

- Existing tall wall (45%)
- Basketball (36%)
- Shelter (32%)

On-line Respondents: 60

Public Meeting Respondents: 24

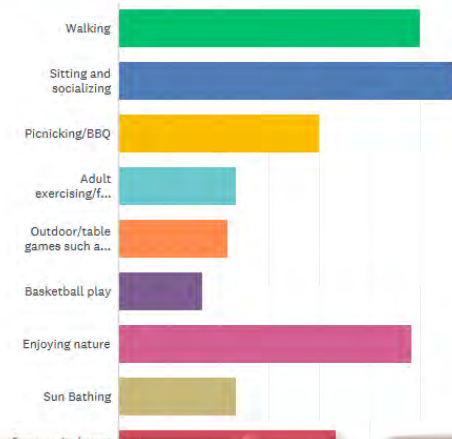
Public Meeting Participants: 40~50

What activities would you like to do in the park?
~ From public meeting

seating and socializing (45%), walking (42%), enjoying nature (38%), picnicking (35%), playing on the lawn (35%), adult exercising (29%), etc.

What activities would you or your family like to do in the renovated park? Please check all that apply.

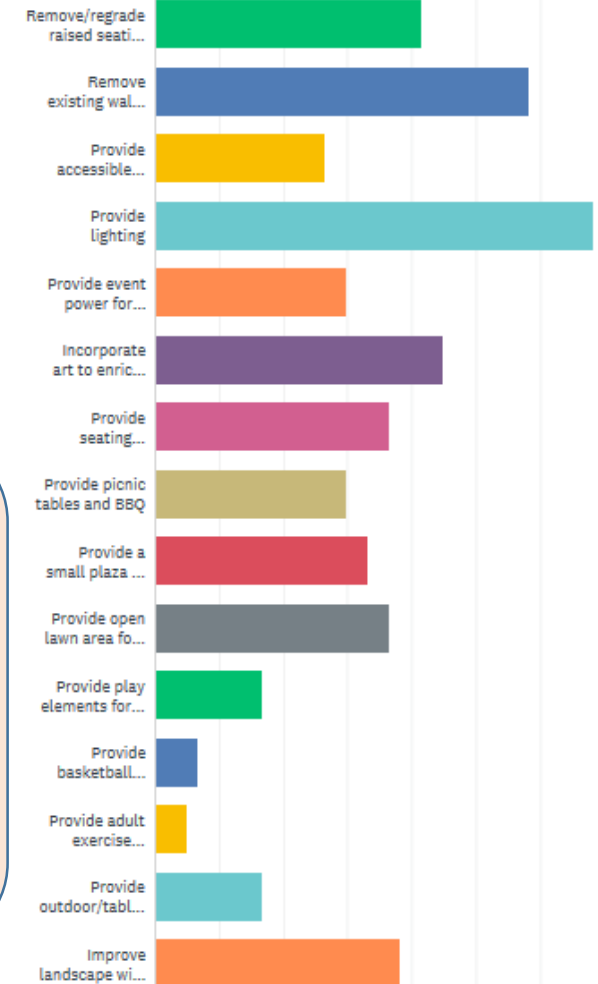
Answered: 60 Skipped: 0



What improvements would you like to see in the park?
~ From public meeting

providing lighting (60%), providing seating and picnicking (45%), improving landscape (41%), providing accessible walk (39%), incorporating art (39%), providing open lawn and plaza (32%), removing tall wall and raised seating area to improve visibility (29%), etc.

What improvements would you like to see in the renovated park?



Christie Park was named for the explorer James Christie who led the Seattle Press Expedition to explore the unknown land of the Olympic peninsula. Christie was known for his efforts to respectfully engage with Native communities.



Members of the Press expedition were photographed at the end of their trans Olympic Mountain trek, in Aberdeen, Washington on 21 May 1890. From left to right are Sims, Barnes, Crumback (kneeling), Christie and Hayes. (Courtesy of Mrs. Pierre Barnes and Mrs. Mary Buell)



UW has strong rowing culture

Students eager to learn and explore the unknown



EXPLORE 探索 KHÁM PHÁ
탐험 해보세요 EXPLORAR استكشاف
ERFORSCHEN สำรวจ Galugarin



EXPLORE

Most participants (71%) like the “Explore” design theme. They thought it fits well with this diverse young college student community.

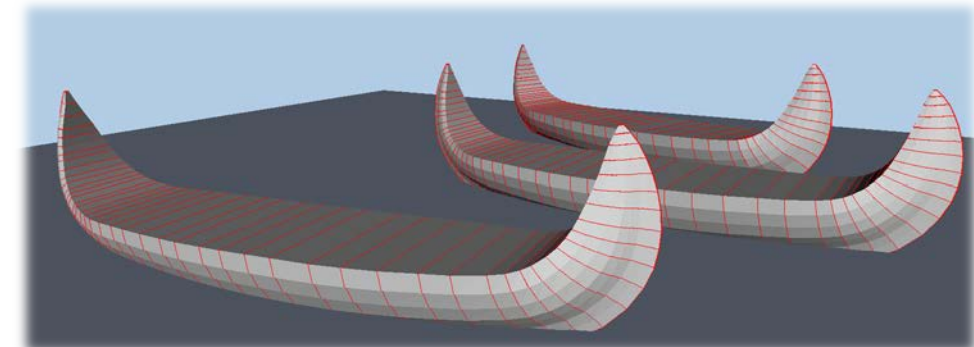
Most participants (68%) like the idea of using canoe/boat to symbolize “Explore” design theme.

ART GIFT IDEA to honor the friendship between Kaohsiung Sister City and Seattle:

Use “BOAT” to symbolize the concept of exploration and to honor the explorative spirit from James Christie, UW community, Seattle, and Kaohsiung Sister City.



Taiwanese Tribal people explore many islands in Pacific Ocean in the rowing boat.



FUNCTIONAL ART ELEMENT - BOAT, EXPLORE, BENCH, SOCIAL

CONCEPT A



OPTION A FEATURES:

- CURVILINEAR FORM (26%)
- SMALLER LAWN WITH DIAGONAL WALK (13%)
- DIRECT ENTRANCE FROM INTERSECTION
- ART ELEMENT CENTRALLY LOCATED (26%)
- SMALLER MULTI-USE PLAZA
- SMALLER LAWN WITH DIAGONAL WALK
- A SEATING AREA AT SOUTHEAST ENTRANCE

SIMILAR FEATURES:

- + PLAZA AT EXISTING NORTH LOT
- + OPEN LAWN AT NEW SOUTH LOT
- + CIRCULATION AND ACTIVITY ZONES TO ACTIVATE WEST AND SOUTH EDGE
- + LIGHTING & LANDSCAPE IMPROVEMENT
- + SITE AMENITIE TO FOSTER ACTIVITIES

CONCEPT B



OPTION B FEATURES:

- GEOMETRIC FORM (16%)
- LARGER LAWN WITHOUT DIAGONAL WALK (42%)
- GREEN BUFFER AT INTERSECTION CORNER
- PATH CONNECTION FROM 9TH AVE NE TO NE 43RD ST
- ART ELEMENT LOCATED AT SIDE (13%)
- BIGGER MULTI-USE PLAZA
- A SEATING AREA NEAR ACTIVITY ZONES



SCHEMATIC PLAN A
CHRISTIE PARK ADDITION May 24, 2018

IDENTITY & CHARACTERISTICS – EXPLORE THEME

- YOUNG COLLEGE STUDENT COMMUNITY: STUDENT EAGER TO LEARN AND EXPLORE THE UNKNOWN
- PARK NAMED AFTER JAMES CHRISTIE, A NORTHWEST EXPLORER IN 1890s CLOSE TO TRIBAL COMMUNITIES
- UW HAS STRONG ROWING TEAM AND CULTURE
- KAOHSIUNG SISTER CITY AND SEATTLE ARE BOTH HARBOR CITIES AND LOVE TO EXPLORE
- USE BOAT TO SYMBOLIZE EXPLORE THEME

SAFETY AND ACCESSIBILITY

- REMOVE RAISED SEATING AREA AND WALL TO IMPROVE VISIBILITY AND ACCESSIBILITY
- PROVIDE ACCESSIBLE CURB RAMP
- PROVIDE ACCESSIBLE WALK, INCREASE CIRCULATION, INCREASE NATURAL SURVEILLANCE
- PROVIDE LIGHTING

INTRODUCE & PROMOTE ACTIVITIES

- CREATE INVITING ENTRANCE AND PROMOTE SPONTANEOUS SOCIAL INTERACTION ALONG STREET EDGE AND ENTRANCE.
- PROVIDE SEATING AT PLAZA FOR SOCIALIZATION AND FLEXIBLE SPACE FOR ACTIVITIES AND COMM. EVENT
- PROVIDE SITE AMENITIES: SEATING, PICNIC TABLES, BBQ, BIKE RACK, DRINKING FOUNTAIN, ETC.
- PROVIDE ACTIVITIES TO ACTIVATE THE FARTHEST CORNER AND PLAZA (FITNESS, SPRING DANCER, PING PONG, ETC.)
- PROVIDE OPEN LAWN AT NEW LOT (FRISBEE, KICK BALLS, BADMINTON, SUNBATHING, RELAXATION, ETC.)

ENHANCE NATURE AND LANDSCAPE

- IMPROVE LANDSCAPE ALONG PERIMETER AND ENTRY.
- IMPROVE STREETScape IF BUDGET ALLOWS.

SUSTAINABILITY

- IMPROVE IRRIGATION
- MEET STORM WATER DRAINAGE REQUIREMENT

245.20'
N88°42'41"W

NE 43RD ST

MULTIPLE FAMILY

MULTIPLE FAMILY



- ACCESSIBLE PARK**
- ACCESSIBLE CURB RAMP LESS THAN 8%
 - PATH WAY LESS THAN 5% EXCEPT 7% RAMP
 - PLAZA: LESS THAN 2%
 - DRINKING FOUNTAIN AREA LESS THAN 2%
 - OPEN LAWN 3.3%
 - FITNESS AREA LESS THAN 2%
 - PICNIC & SEATING AREA LESS THAN 2%

SCHEMATIC PLAN - ACCESSIBILITY
CHRISTIE PARK EXPANSION

LAWN ACTIVITIES



PLAZA ACTIVITIES



PLAY



FITNESS EXERCISE

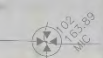


PROVIDE LIGHTING AND LANDSCAPE



245.20'
N89°42'41"W

NE 43RD ST



MULTIPLE FAMILY

MULTIPLE FAMILY

9TH AV NE



SCHEMATIC PLAN B
CHRISTIE PARK ADDITION
 May 24, 2018



Plan



three stainless steel canoes based on shape of Taiwan Orchid Island boats

hardwood seats



Use "BOAT" to symbolize the concept of exploration and to honor the explorative spirit from James Christie, UW community, Seattle, and Kaohsiung Sister City.

