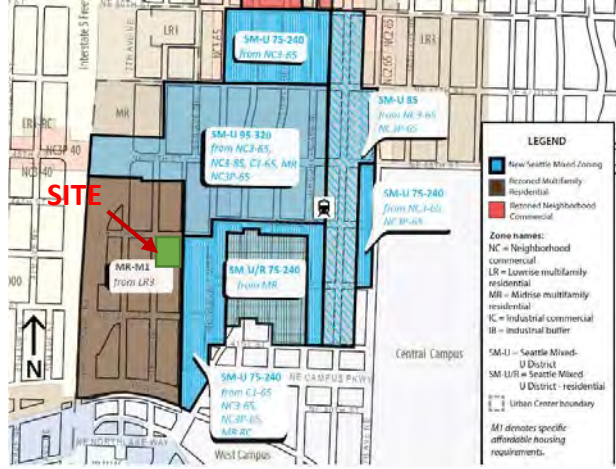


# Christie Park Addition Project

# LOCATION AND CONTEXT

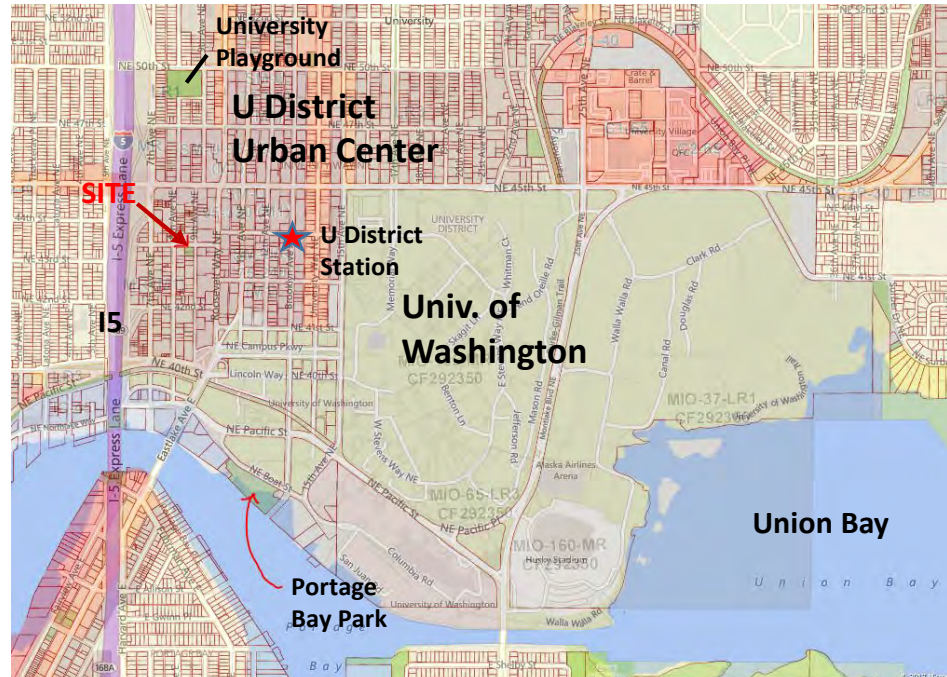


- An unique young college student community with diverse groups
- 75% of total population is between the ages of 18 and 29
- Population who are persons of color: **46.02 %**; Asian (**31%**)
- Renter-occupied: **82.4%**, Owner-occupied: **9.4%**



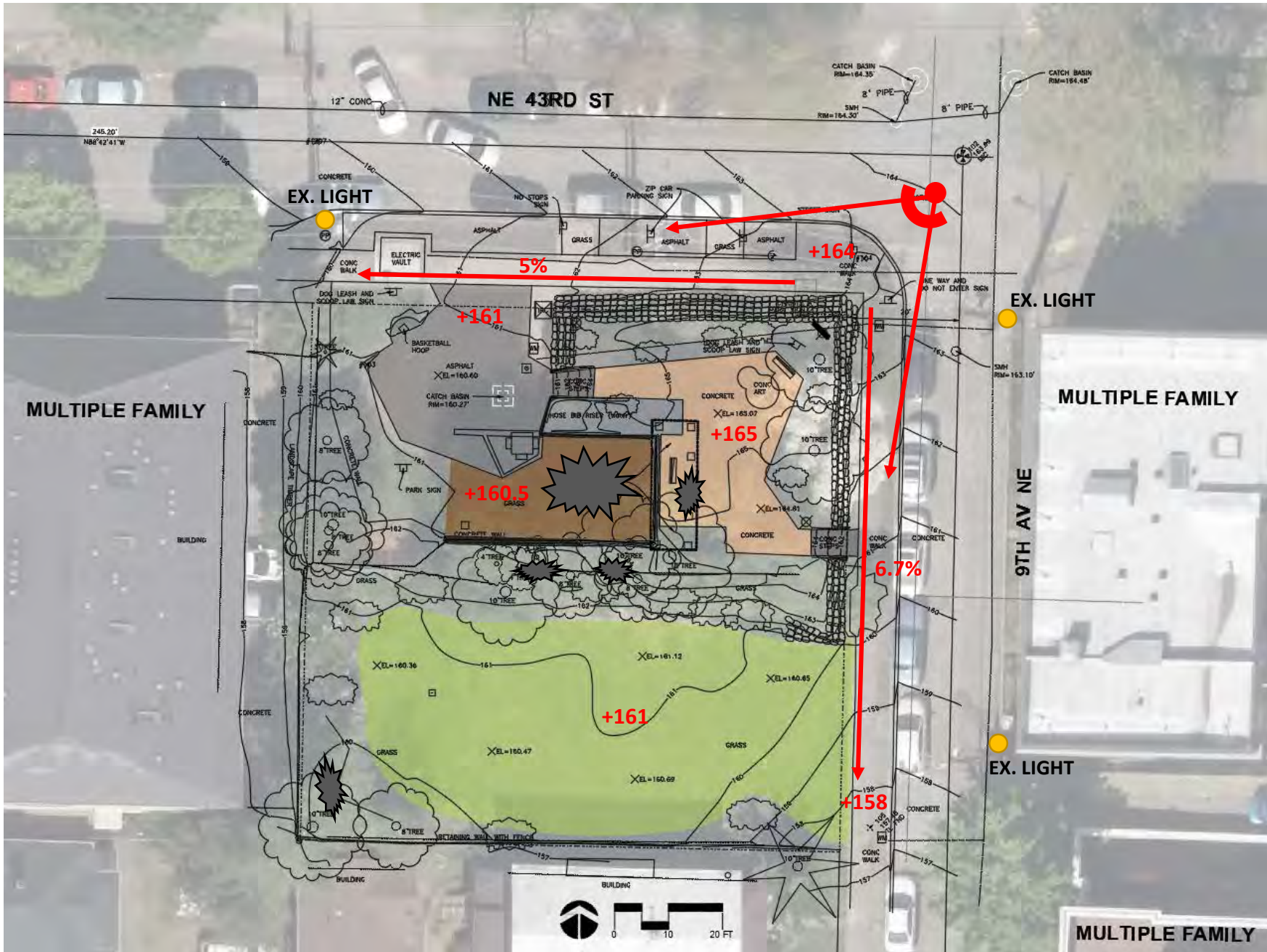
- LIGHT RAIL STATION & UPZONING:**
- TALLER BUILDINGS
  - HIGHER DENSITY
  - LESS SUNSHINE, MORE SHADE
  - MORE PEDESTRIAN TRAFFIC
  - MORE NEEDS FOR OPEN SPACE

**ADDITIONAL LOT** was purchased in 2012 through Parks proactive approach to fill this open space gap and former owner’s willingness to contribute to the open space improvement in this high density area including an offer for a potential art piece to enrich park design and honor the sister city relationship with Kaohsiung City.



- FUTURE 43<sup>RD</sup> GREEN STREET PLAN:**
- + COMMUNITY LED INTERSECTION PAINTING
  - + PERMEABLE PARK EDGE AND SIDEWALK
  - + IMPROVED STREETScape
  - + PEDESTRIAN STREET SITE FURNISHINGS

# EXISTING CONDITIONS & SITE ANALYSIS

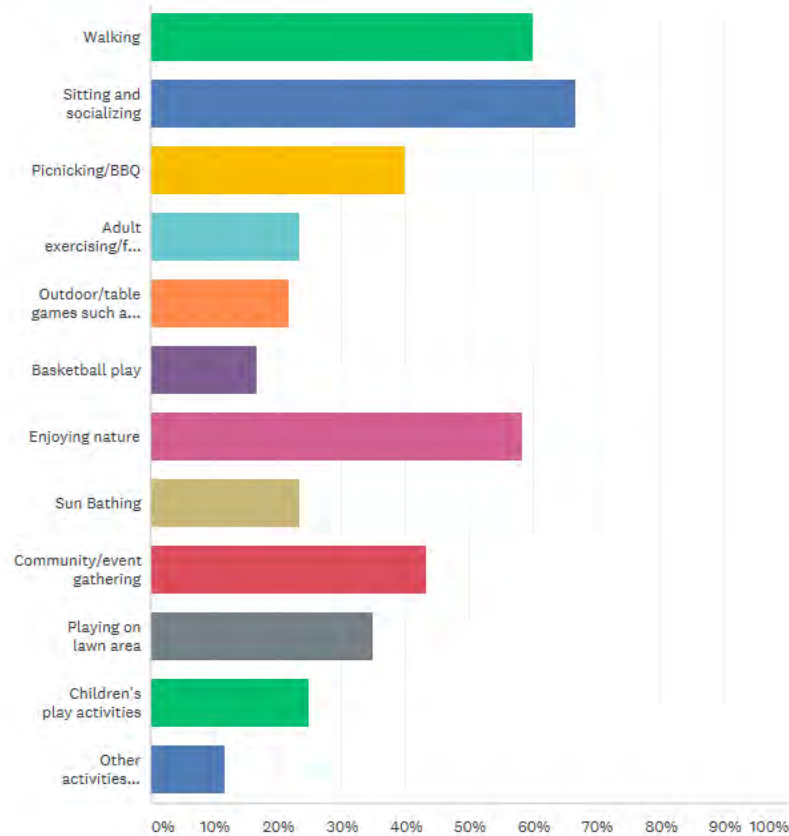


- CURRENT PARK IS NOT INVITING
- RAISED SEATING AREA BLOCKS VIEWS INTO PARK AND IS NOT ACCESSIBLE
- HIDING CORNER BEHIND RAISED SEATING AREA AND EX. WALL CREATES CRIME AND SAFETY ISSUES
- EX. TALL WALL DISCONNECT TWO LOTS
- SMALL PARCEL SIZE (100'X100')
- NO LIGHTING IN THE PARK, 3 EX STREET LIGHTS
- 15% IMPERVIOUS SURFACE LIMIT FOR NEW LOT
- GRADE CHANGES FROM +164 TO +158 AT 6% ALONG 9<sup>TH</sup> AVE.
- GRADE DROP TO ADJACENT PARCELS
- EX. SITE AMENITIES (Basketball, Drinking Fountain, Picnic Table, Shelter, Bench, etc.)
- EX. ART FEATURES (Bamboo Mural on the Wall)
- EX SUNNY LAWN AREA, TREES, & PLANTS
- ELECTRIC VAULT AT SIDEWALK ALONG NE 43<sup>RD</sup> ST
- DETERIORATED EXISTING SIDEWALK
- NO IRRIGATION
- + POTENTIAL ART ELEMENT ENHANCEMENT
- + FUTURE GREEN STREET IMPROVEMENT AT 43<sup>RD</sup> ST
- + AN UNIQUE YOUNG COLLEGE STUDENT COMMUNITY WITH DIVERSE GROUPS



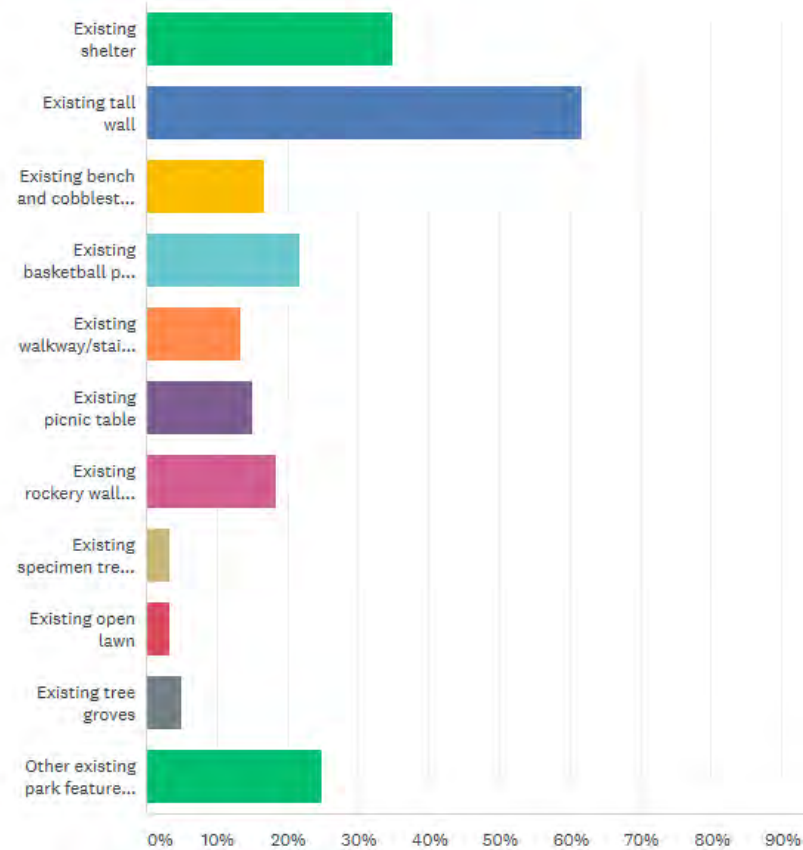
What activities would you or your family like to do in the renovated park? Please check all that apply.

Answered: 60 Skipped: 0

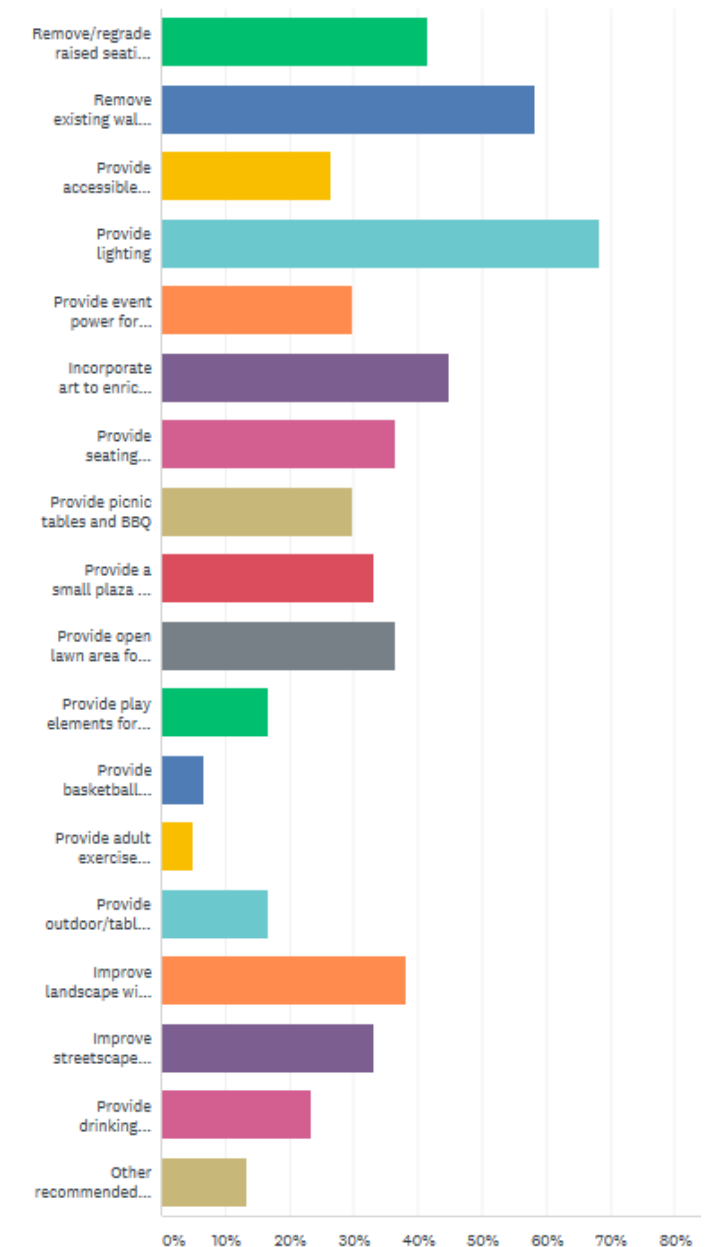


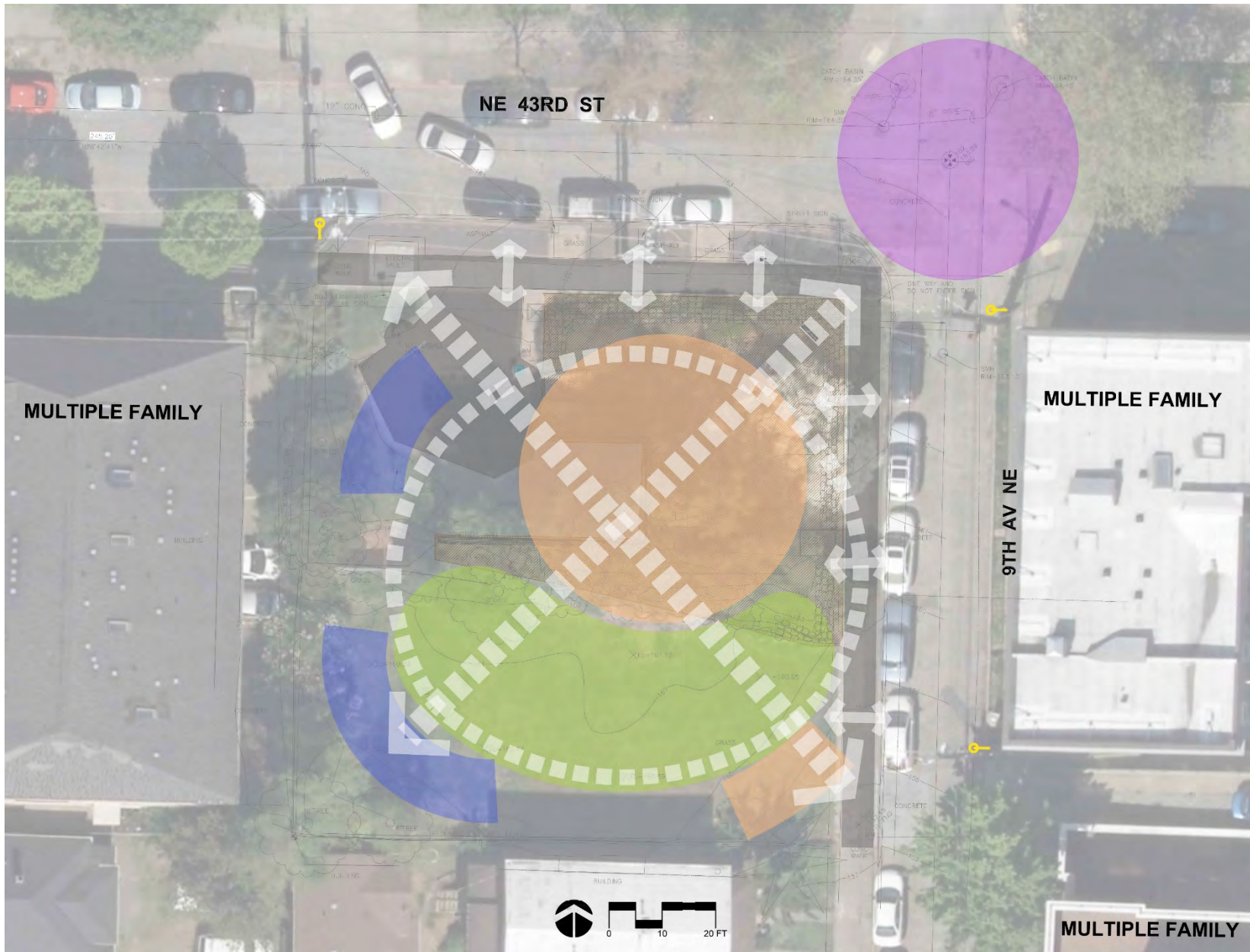
What do you dislike most about the existing park? check all that apply.

Answered: 60 Skipped: 0



What improvements would you like to see in the renovated park?





## IDENTITY & CHARACTERISTICS – EXPLORE THEME

- YOUNG COLLEGE STUDENT COMMUNITY: EXPLORATIVE, DIVERSE, ENERGETIC, CURIOUS, INNOVATIVE, ETC.
- PARK NAMED AFTER JAMES CHRISTIE, A NORTHWEST EXPLORER IN 1890s CLOSE TO TRIBAL COMMUNITIES
- UW HAS STRONG ROWING TEAM AND CULTURE
- KAOHSIUNG SISTER CITY AND SEATTLE ARE BOTH HARBOR CITIES AND ENJOY ROWING ACTIVITIES

## SAFETY AND ACCESSIBILITY

- REMOVE RAISED SEATING AREA AND WALL TO IMPROVE VISIBILITY AND ACCESSIBILITY
- PROVIDE LIGHTING
- PROVIDE ACCESSIBLE WALK, INCREASE CIRCULATION, INCREASE NATURAL SURVEILLANCE

## INTRODUCE & PROMOTE ACTIVITIES

- PROMOTE SPONTANEOUS SOCIAL INTERACTION ALONG STREET EDGE, MAKE STREET EDGE PERMEABLE AND EASY TO STEP INTO PARK.
- PROVIDE SEATING AT PLAZA FOR SOCIALIZATION AND FLEXIBLE SPACE FOR ACTIVITIES AND COMMUNITY EVENT
- PROVIDE SITE AMENITIES: SEATING, PICNIC TABLES, BBQ, BIKE RACK, DRINKING FOUNTAIN, ETC.
- PROVIDE ACTIVITIES TO ACTIVATE THE FARTHEST CORNER AND ALONG THE EDGE (PING PONG, FITNESS...)
- PROVIDE OPEN LAWN AT NEW LOT (FRISBEE, KICK BALLS, BADMINTON, SUNBATHING, RELAXATION, ETC.)

## ENHANCE NATURE AND LANDSCAPE

- IMPROVE LANDSCAPE ALONG PERIMETER
- WORK W/ SDOT TO IMPROVE STREETScape

## SUSTAINABILITY

- IMPROVE IRRIGATION
- MEET STORM WATER DRAINAGE REQUIREMENT

## PRELIMINARY CONCEPT THEME - EXPLORE

**EXPLORE 探索 KHÁM PHÁ**  
**탐험해보세요 EXPLORAR استكشاف**  
**ERFORSCHEN สำรวจ Galugarin**



**“CANOE” SYMBOLIZES THE CONCEPT OF EXPLORATION**

**Kaohsiung Sister City Connection**  
**Potential Art Gift: Taiwanese Tribal Canoe**  
**Taiwanese Tribal people explore many islands in Pacific Ocean in the Lanyu canoe.**



Members of the Press expedition were photographed at the end of their trans Olympic Mountain trek, in Aberdeen, Washington on 21 May 1890. From left to right are Sims, Barnes, Crumback (kneeling), Christie and Hayes. (Courtesy of Mrs. Pierre Barnes and Mrs. Mary Buell)



**Students eager to learn and explore**



**INTEGRATE ART ELEMENTS INTO DESIGN**



## POTENTIAL COMMUNITY LED INTERSECTION PAINTING



## SOCIAL PERMEABLE STREET EDGE



## PROVIDE LIGHTING AND LANDSCAPE



Christie Park was named for the explorer **James Christie** who led the Seattle Press Expedition to explore the unknown land of the Olympic peninsula. Christie was known for his efforts to respectfully engage with Native communities.



UW has strong rowing culture



Members of the Press expedition were photographed at the end of their trans Olympic Mountain trek, in Aberdeen, Washington on 21 May 1890. From left to right are Sims, Barnes, Crumback (kneeling), Christie and Hayes. (Courtesy of Mrs. Pierre Barnes and Mrs. Mary Buell)



Students eager to learn and explore the unknown



## EXPLORE

**"CANOE" SYMBOLIZES THE CONCEPT OF EXPLORATION**



Northwest Tribal Canoe

Do you know the word "EXPLORE" in different languages? Please write them down and note which language it is.

What does explore mean to you?



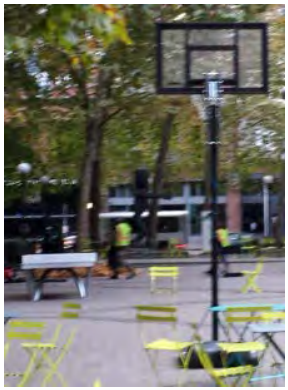
Kaohsiung Sister City Connection  
Potential Art Gift: Taiwanese Tribal Canoe  
Taiwanese Tribal people explore many islands in Pacific Ocean in the Lanyu canoe.

# ACTIVATE THE PARK

## LAWN ACTIVITIES



## PLAZA ACTIVITIES



## FITNESS EXERCISE





## CONCEPT A



### OPTION A FEATURES:

- CURVILINEAR FORM
- DIRECT ENTRANCE FROM INTERSECTION
- ART ELEMENT CENTRALLY LOCATED
- SMALLER MULTI-USE PLAZA
- SMALLER LAWN WITH DIAGONAL WALK
- A SEATING AREA AT SOUTHEAST ENTRANCE

## CONCEPT B



### OPTION B FEATURES:

- GEOMETRIC FORM
- GREEN BUFFER AT INTERSECTION CORNER
- PATH CONNECTION FROM 9<sup>TH</sup> AVE NE TO NE 43<sup>RD</sup> ST
- ART ELEMENT LOCATED AT SIDE
- BIGGER MULTI-USE PLAZA
- LARGER LAWN WITHOUT DIAGONAL WALK
- A SEATING AREA NEAR ACTIVITY ZONES

### SIMILAR FEATURES:

- + PLAZA AT EXISTING NORTH LOT
- + OPEN LAWN AT NEW SOUTH LOT
- + CIRCULATION AND ACTIVITY ZONES TO ACTIVATE WEST AND SOUTH EDGE
- + LIGHTING & LANDSCAPE IMPROVEMENT
- + SITE AMENITIE TO FOSTER ACTIVITIES
- + PERMEABLE STREET EDGE