

# Jefferson Golf Course

## Key //

Pedestrian Lane

Bike Lane

Combined Use Segment

Accessible Trail

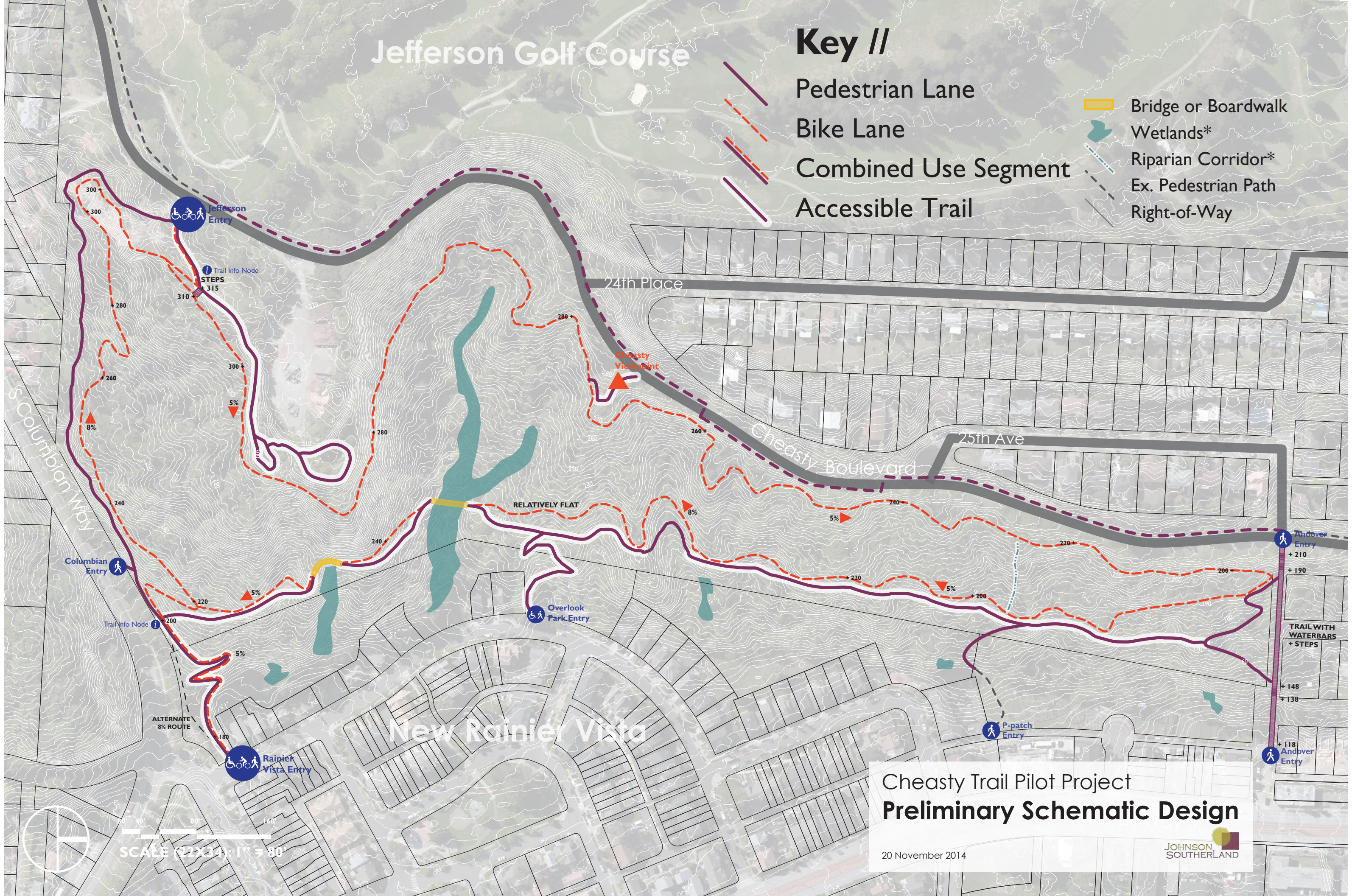
Bridge or Boardwalk

Wetlands\*

Riparian Corridor\*

Ex. Pedestrian Path

Right-of-Way



# New Rainier Vista

## Cheasty Trail Pilot Project Preliminary Schematic Design

20 November 2014

