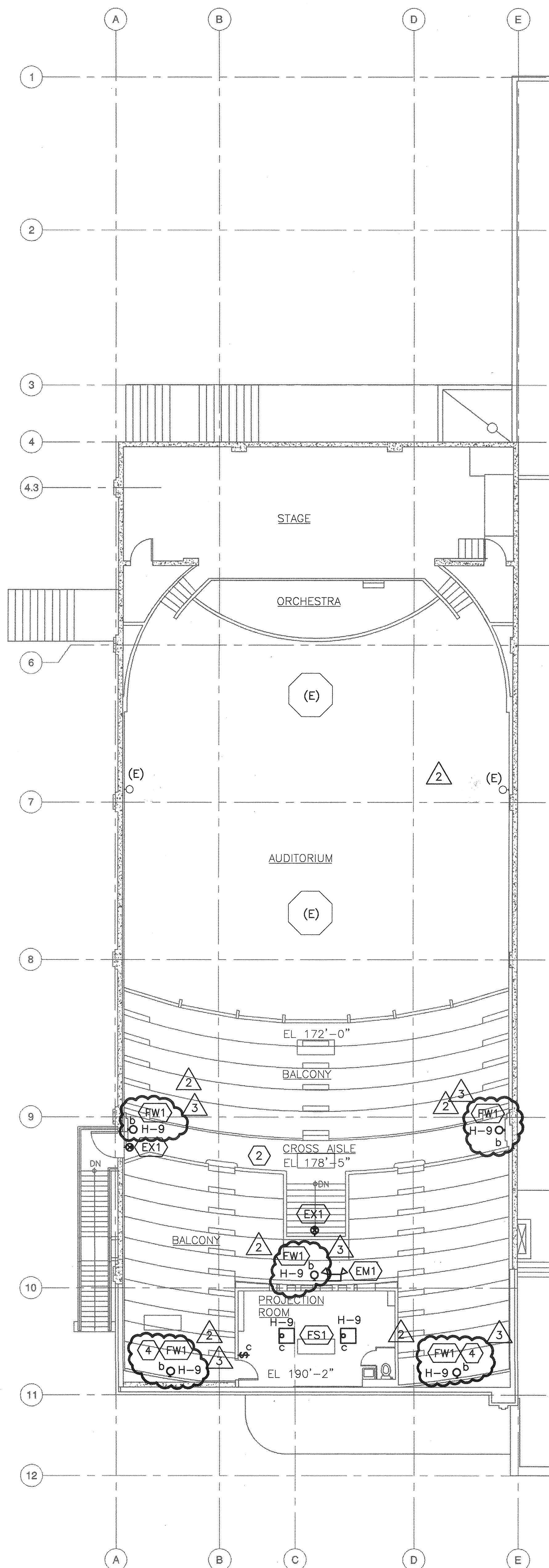


1 MEZZANINE LIGHTING PLAN
E203 SCALE: 1/8" = 1'-0"



2 BALCONY LIGHTING PLAN
E203 SCALE: 1/8" = 1'-0"

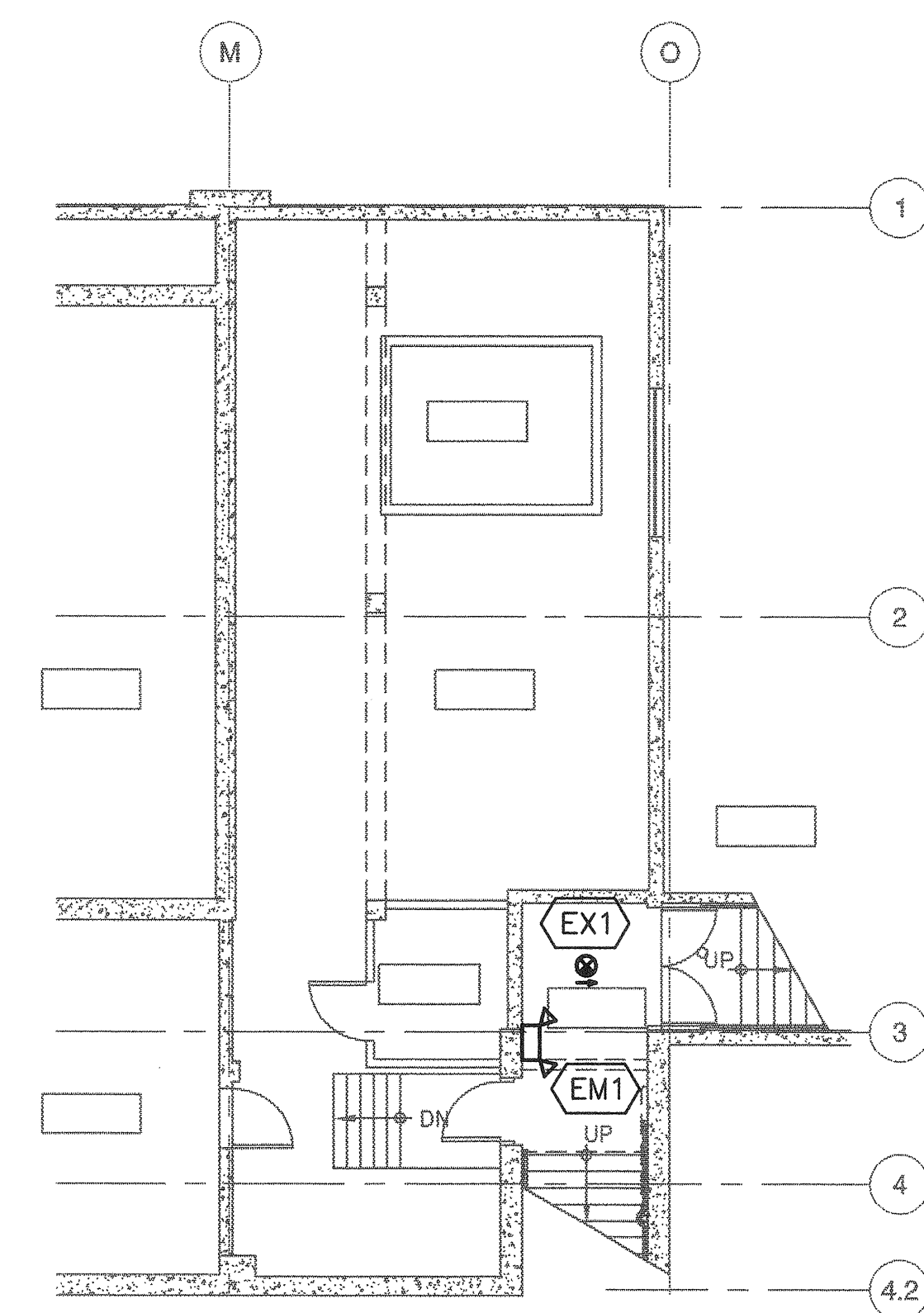
GENERAL NOTES

1. ALL EXIT AND EMERGENCY EGRESS LIGHT FIXTURES SHALL BE CIRCUITED TO NEAREST LIGHTING CIRCUIT VIA UNSWITCHED LEG.
2. ALL EMERGENCY EGRESS LIGHT FIXTURES SHALL BE MOUNTED AT 8'-0" AFF OR 1'-0" BELOW CEILING, WHICH EVER IS LOWEST.

NOTES THIS SHEET

- 1 MOUNT 6'-0" BELOW CEILING AND CONTROL VIA FOYER (306) CONTROLS.
- 2 SEE 1/E203 FOR OVER BALCONY LIGHTING SWITCH LOCATION.

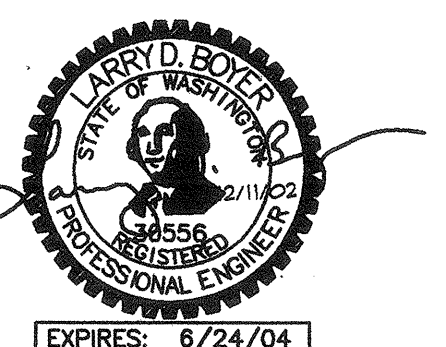
3 MOUNT ON WALL AT CEILING IN VERTICAL POSITION.



3 BASEMENT LIGHTING PLAN
E203 SCALE: 1/8" = 1'-0"



**CONSTRUCTION DOCUMENTS
BID SET**



3	LIGHTING REVISIONS	12/11/02
2	LIGHTING REVISIONS	8/30/02
1	PERMIT CORRECTIONS	7/15/02
NO.	REVISION - AS BUILT	DATE

REVIEWED: *J. Allans* 1/15/03
DATE
PARK ENGINEER

All work done in accordance with the City of Seattle Standard Plans and Specifications in effect on the date shown above, and supplemented by Special Provisions.



17928 BOTHELL EVERETT HWY SE, SUITE H
BOTHELL, WASHINGTON 98012
(425) 481-7735 FAX (425) 481-7692

CONTACT: FRANK STARR
JOB NUMBER: 023261

**SAND POINT
MAGNUSON PARK
COMMUNITY RECREATION CENTER
BUILDING 47**

**MEZZANINE, BALCONY,
& BASEMENT
LIGHTING PLAN**

DESIGNED	FHS	DATE	JULY 23, 2002
DRAWN	MDW	DESIGN REVIEW	
CHECKED	LDB		
ORDINANCE NO.	119812 & 119987		
CONTRACT NO.	1616	SHEET	70 OF 76
SCALE	1/8" = 1'-0"		

