



Seattle Human Services

SWEETENED BEVERAGE TAX
PORTFOLIO

HUMAN SERVICES DEPARTMENT (HSD)



HEALTHY COMMUNITIES,
HEALTHY FAMILIES

Greater Seattle is a place where the richness of our diversity is valued, all of our communities thrive, and people grow up and grow old with opportunity & dignity.



RACE & SOCIAL JUSTICE

Addressing equity through the Race & Social Justice Initiative (RSJI), Results Based Accountability (RBA), & Community Engagement



HSD'S FOOD & MEALS INVESTMENTS

Advance equity in HEALTHY
FOOD Access and Education and
reduce Health Disparities

HSD'S SBT-FUNDED PROGRAMS

Farm to Table

Fresh Bucks to Go

Food Bank & Meals Programs

Out-of-School Time Nutrition



FARM TO TABLE

SBT Investment

FARM TO TABLE

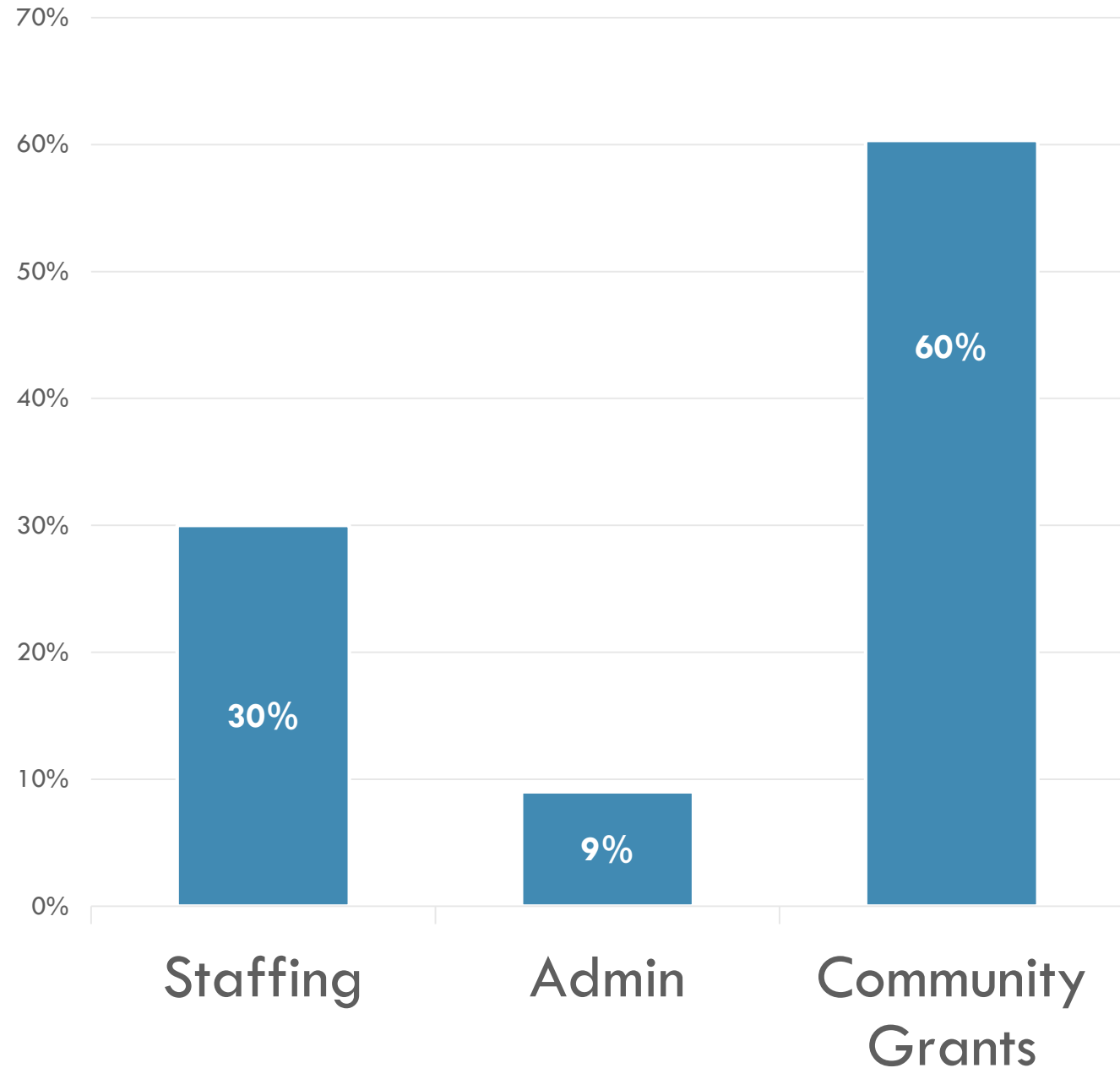
Budget: \$423,576

Staff: 2 FTE

Reach: 2,850 children (0-18)

Impact:

- 80% children of color
- 76% low-income families
- 2013-2017: sites served fewer unhealthy foods
- Priority program in the Seattle Food Action Plan



FARM TO TABLE

SBT funds will:

- + **1,050 additional children (0-18)**
- + **New Seattle Preschool Programs**
- + **Programs on the waitlist**

- ↑ **Food stipends and nutritional education**
- ↑ **Participation of preschools, childcare, & afterschool programs**



FRESH BUCKS TO GO

SBT Investment

FRESH BUCKS TO GO

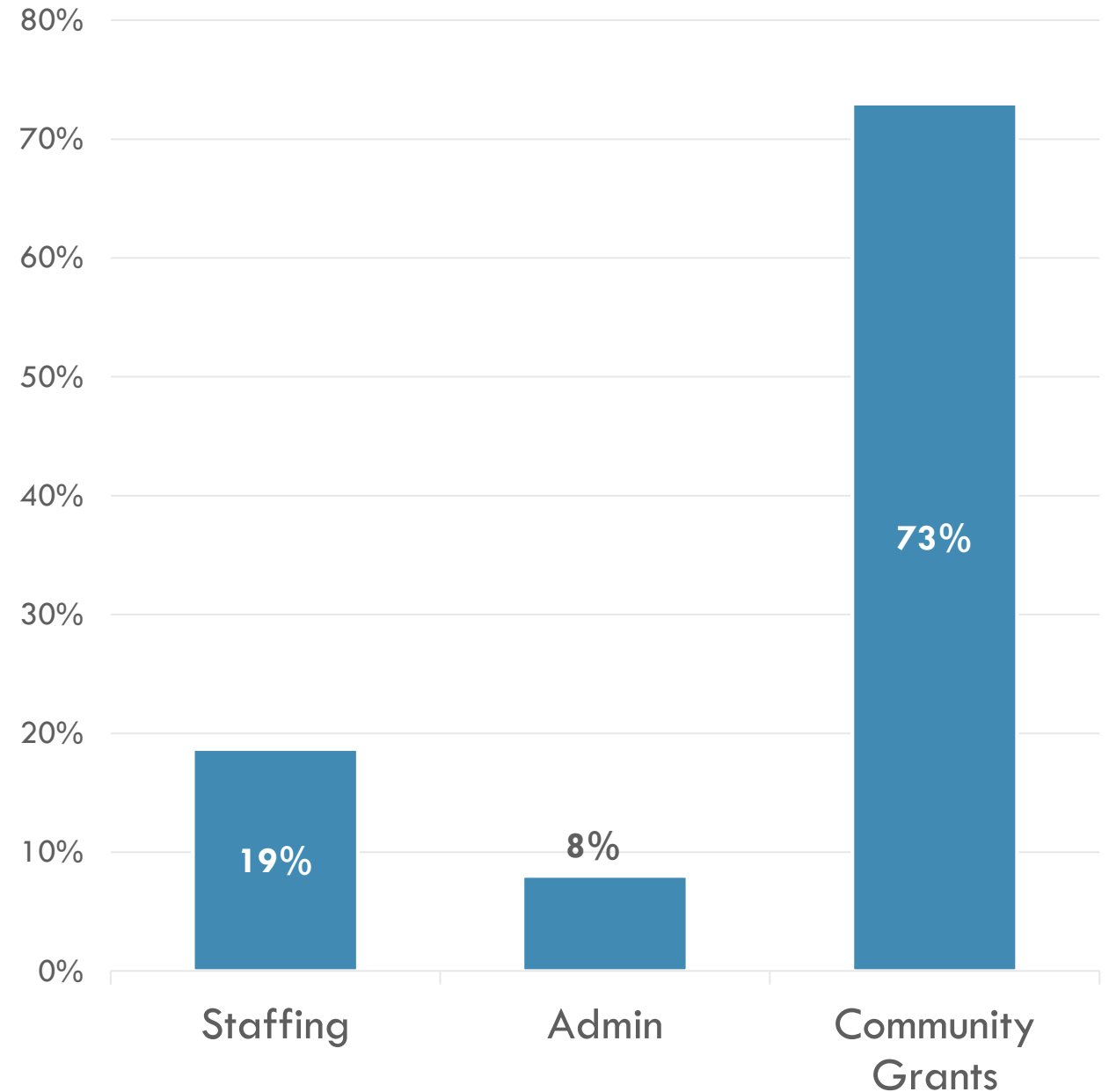
Budget: \$551,360

Staff: 1 FTE

Reach: 1,400 children (2-6)

Impact:

- 80% children of color
- 76% low-income families
- 90% of children & 93% of adults ate more fruits & vegetables
- 99% said FB2G helped increase access to healthy foods



FRESH BUCKS TO GO

SBT funds will:

Pilot → full implementation

Year-round

↑ Participants: 700 to 1,400

+ Number of sites

+ Preschools

+ Community-based locations (e.g., family resource centers, community centers, & meal programs)



FOOD BANKS

SBT Investment

FOOD BANKS

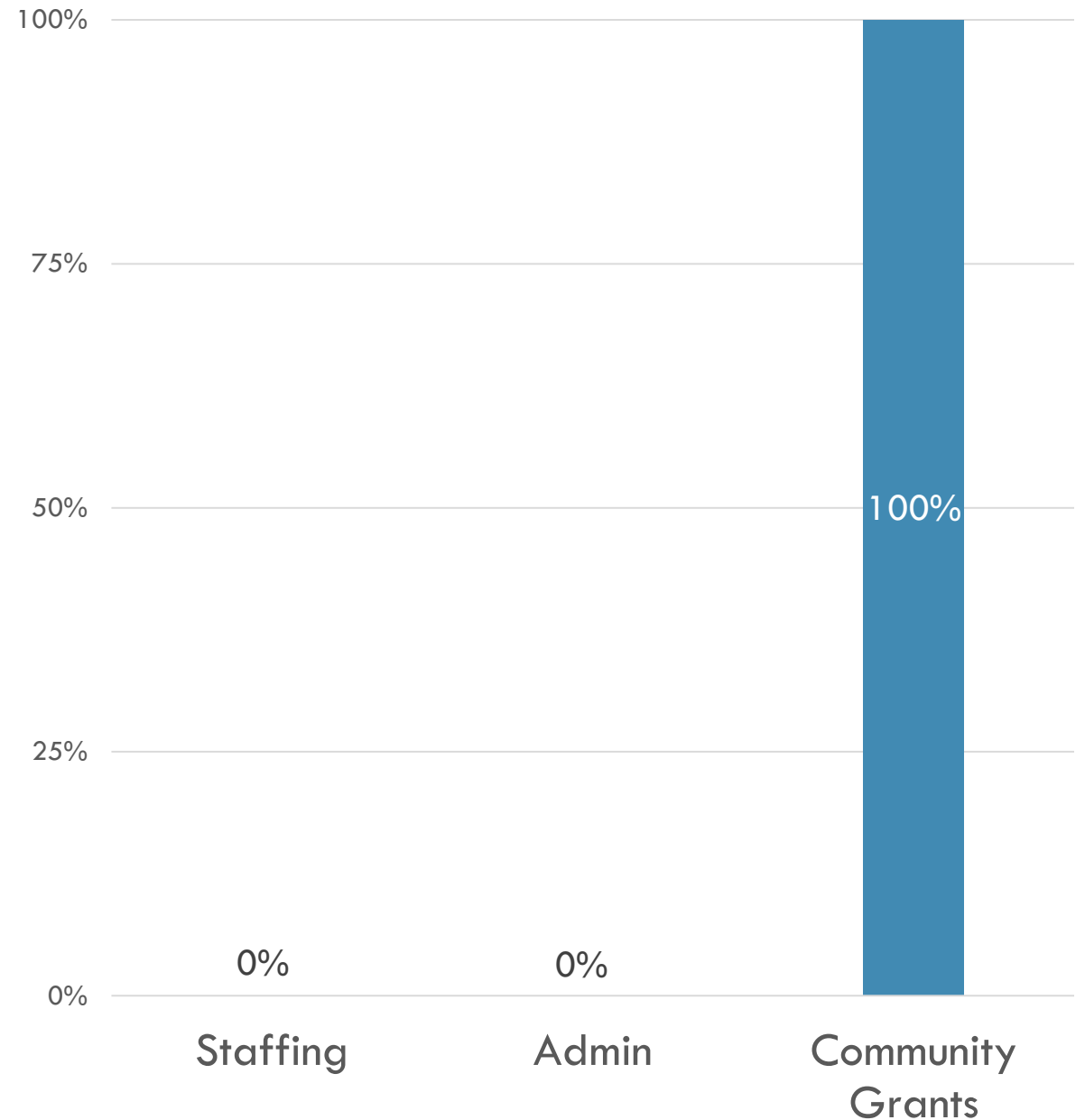
Budget: \$216,160

Staff: 0 FTE

Reach: approximately 137,000 individuals

Impact:

- Provide groceries and meals for infants, children, seniors and people with special dietary needs
- Assist families to retain other food assistance (e.g., SNAP), and other non-emergency food resources



FOOD BANKS

SBT funds will:

- ↑ Access to safe & nutritious food
 - ↑ Stability of low income participants
- + 1,100 participants at food bank and meal programs across Seattle



OUT-OF-SCHOOL TIME (OST) MEALS

SBT Investment

OUT-OF-SCHOOL TIME (OST) MEALS

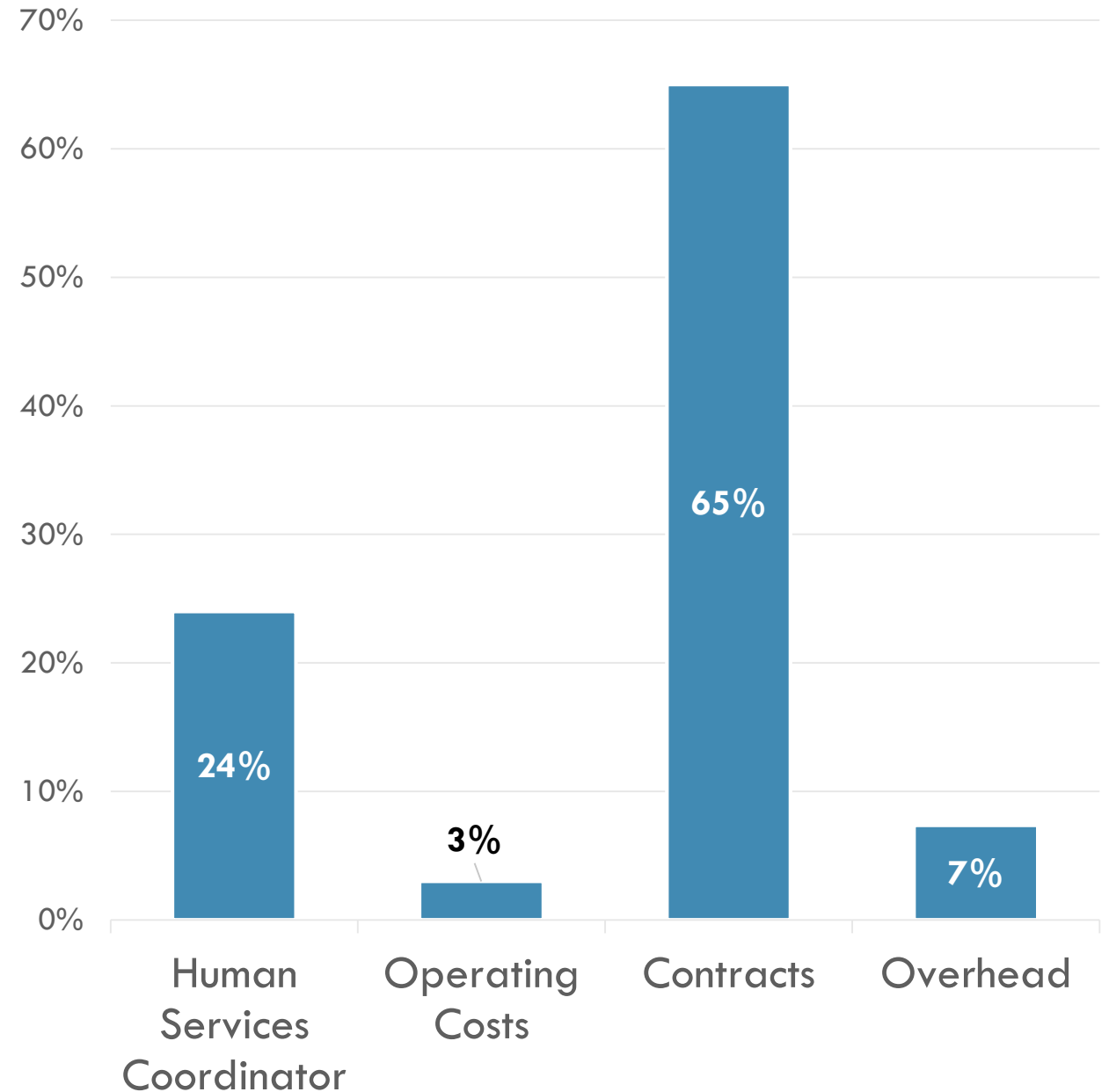
Budget: \$194,544

Staff: 1 FTE

Reach: 5,400 children (0-18)

Impact:

- Provide free, healthy meals & snacks
- Community-based sites
- Low-income children, youth & communities
- 70% children of color
- 2017: 230,130 meals to 5,000 children



OUT-OF-SCHOOL TIME (OST) MEALS

SBT funds will:

- ↑ Summer Food Service Program
 - Year-round food access
 - Meal quality with fresh fruits & vegetables

25 year-round after school sites
400 children annually
3,600 meals per school year

CAB Makes Recommendations → Provisos Lifted



2018 Contracts Executed



2019 Food & Nutrition RFP

NEXT STEPS



QUESTIONS?

HSD'S SBT PORTFOLIO

 <p>FARM TO TABLE SBT Treatment</p>	 <p>FRESH BUCKS TO GO SBT Treatment</p>	 <p>FOOD BANKS SBT Treatment</p>
 <p>OUT-OF-SCHOOL TIME (OST) MEALS SBT Treatment</p>	 <p>FARM TO TABLE Additional Information</p>	 <p>FRESH BUCKS TO GO Additional Information</p>
 <p>FOOD BANKS Additional Information</p>	 <p>OUT-OF-SCHOOL TIME (OST) MEALS Additional Information</p>	<p>RESEARCH: FOOD SECURITY</p> <p>Food insecurity disproportionately impacts African American, Black and Hispanic-headed households, and in our community Native American, Alaskan Indian and Native Hawaiian populations.</p> <ol style="list-style-type: none"> Household Food Security in the United States in 2014, USDA, September 2014 <ul style="list-style-type: none"> For households with incomes near or below the Federal poverty line, households with children headed by single women or single men, women and men living alone, and Black and Hispanic-headed households, the rates of food insecurity were substantially higher than the national average. The typical (median) food-insecure household spent 27% percent more for food than the typical food-secure household of the same size and composition, including food purchased with supplemental Nutrition Assistance Program (SNAP) benefits. SNAP Checkbook Case Studies Conducted, Feeding America, November 2014



FARM TO TABLE

[Additional Information](#)

FARM TO TABLE: BUDGET

2017 Budget	\$ 109,645.00	\$25,645 GF + \$84,000 grants expired in 2017	
	\$ 102,933.00	Grants & Contracts Specialist (1.0 FTE)	24%
	\$ 27,051.00	Planning & Dev. Specialist II (0.25 FTE)	6%
Additional SBT Funding	\$ 6,731.00	Operating Costs	2%
	\$ 255,568.00	Contracts	60%
	\$ 31,293.00	Overhead	7%
	\$ 423,576.00	TOTAL	

F2T BENEFITS

Children & Families:

- Makes healthy choices easy
- Builds environments of well-being
- Diversifies food choices
- Builds healthy habits
- Builds connections between food source, growers, & cooks

Farmers:

- Expand customer base
- Farmers of color serve their own communities
- Bulk buy system = efficiencies

Sites:

- Convenient online ordering
- Incentive support
- Nutrition education, gardening, & farm tour support
- Relationship building



F2T PARTNERS

- 21 ACRES
- ARC
- Department of Education & Early Learning
- Human Services Department
- Northwest Agriculture & Business Center
- Public Health-Seattle & King County
- Seattle Tilth Association
- Washington State Dental Association
- YMCA of Greater Seattle



F2T FUNDERS

- City of Seattle
- CDC – PICH
- HumanLinks Foundation



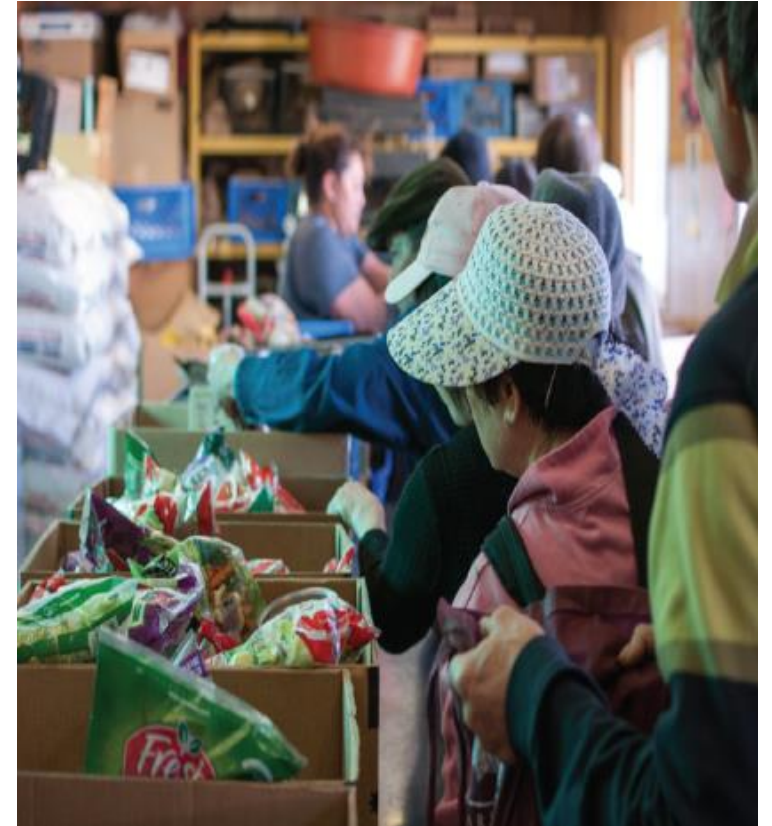
FRESH BUCKS TO GO

[Additional Information](#)

FRESH BUCKS TO GO: BUDGET

SBT Funding

\$ 102,933.00	Grants & Contracts Specialist, Sr. (1.0 FTE)	19%
\$ 5,385.00	Operating Costs	1%
\$ 402,410.00	Contracts	73%
\$ 40,632.00	Overhead	7%
\$ 551,360.00	TOTAL	



FOOD BANKS

[Additional Information](#)

FOOD BANKS: BUDGET

Additional SBT
Funding

\$ 216,160.00	Contracts	100%
\$ 216,160.00	TOTAL	



OUT-OF-SCHOOL TIME (OST) MEALS

[Additional Information](#)

OUT-OF-SCHOOL TIME (OST) MEALS: BUDGET

2017 Budget	\$ 678,798.00	\$72,749 GF + \$606,048 (USDA meal reimbursements & limited admin from 2016)	
Additional SBT Funding	\$ 47,522.00	Human Services Coordinator (1.0 FTE)	24%
	\$ 5,385.00	Operating Costs	3%
	\$ 127,093.00	Contracts	65%
	\$ 14,544.00	Overhead	7%
	\$ 194,544.00	TOTAL	

RESEARCH: FOOD SECURITY

Food insecurity disproportionately impacts African American/Black and Hispanic-headed households; and in our community Native American, Alaskan Indian and Native Hawaiian populations.

1. Household Food Security in the United States in 2015, USDA, September 2016
 - For households with incomes near or below the Federal poverty line, households with children headed by single women or single men, women and men living alone, and Black and Hispanic-headed households, the rates of food insecurity were substantially higher than the national average.
 - The typical (median) food-secure household spent 27% percent more for food than the typical food-insecure household of the same size and composition, including food purchased with supplemental Nutrition Assistance Program (SNAP) benefits
2. SNAP Outreach Case Studies Coast to Coast, Feeding America, November 2014

RESEARCH: CULTURE IS A VITAL PART OF FOOD ACCESS

Families have the right for enough food, healthy food and culturally appropriate food in addition to smallholders in their food systems. Culture, acquired taste and past experience shape people's food preferences.

1. Culturally appropriate food: researching cultural aspects of food sovereignty, Devon Sampson, Chelsea Wills, 2013
2. The Political Economy of Culturally Appropriate Foods in Winnipeg: A Case of Refugee Path Immigrants, Bamidele Adekunle, Jaime Cidro and Glen Filson, 2015

RESEARCH: PRESCHOOL INTERVENTIONS

Interventions when children are younger, can prevent obesity. A multi-prong approach that includes nutrition & gardening education and family involvement, can increase fruit and vegetable consumption.

1. Preventing Childhood Obesity in Early Care and Education Programs: Selected Standards from Caring for Our children: National health and Safety Performance Standards; Guidelines for Early Care and Education Programs, 3rd Edition, American Academy of Pediatrics, American Public Health Association, National Resource Center for Health and Safety in Child Care and Early Education, 2010
2. What role can child-care settings play in obesity prevention? A review of the evidence and call for research efforts, Larson, N., Ward, D.S., Neelon, S.B. Story, M., (2011), 2012
3. Farm to Family Pilot Evaluation, Healthy Kids, Healthy Futures, Northeastern University, 2012
4. Overweight and obese preschoolers lose more weight and keep it off when parent is also treated, University of Buffalo, 2014

RESEARCH: AFFORDABILITY

Economic constraints on taste formation and the true cost of healthy eating, [Soc Sci Med](#). 2016 Jan;148:34-41. doi: 10.1016/j.socscimed.2015.11.025. Epub 2015 Nov 25

- Article shows how an interaction between economic constraints and children's taste preferences shapes low-income families' food decisions.
- According to studies of eating behavior, children often refuse unfamiliar foods 8 to 15 times before accepting them.
- Researchers find that many low income respondents minimize the risk of food waste by purchasing what their children like – often calorie dense, nutrient-poor foods.
- Low-income participants' risk aversion may affect children's taste acquisition and eating habits with implications for socio economic disparities in diet quality.