



Guiding Principles and Key Study Assumptions Workshop

I-5 Lid Feasibility Study Committee

June 11, 2019

2-5 PM

Bertha Knight Landes Room, Seattle City Hall



Small group work session

- Your facilitator is here to help guide the conversation and pull in subject matter resources in the room.
- Take a minute to review the discussion questions below. They are meant to be a guide – make them your own and have fun!
- Each group will have 45 minutes for discussion and 5 minutes to share with the larger group.
- Save 5 minutes at the end of your work session to identify what you would like to share with the larger group and select someone from your group to report out.
- **Part 1 (20 minutes):**
 - Discuss opportunities and challenges. Using sticky notes, write down ideas about opportunities and challenges and place them on the flip charts.
- **Part 2 (20 minutes):**
 - Discuss guiding principles and key study assumptions. Using sticky notes, write down ideas about guiding principles and key study assumptions and place them on the flip charts.
- **Part 3 (5 minutes):**
 - Select a speaker and highlights to share during your 5-minute report out.

Discussion questions

When examining the area between Madison and Seneca streets:

- What opportunities do you see? What challenges do you see? Think broadly. Opportunities and challenges may be physical, social, economic, etc.
- Are there key study assumptions that are missing or that you would add?
- How might we define our study guiding principles? What's missing?
 - Connectivity
 - Complete community
 - Equity
 - Health
 - Identity
 - Affordability
 - Sustainability and resilience
- Do you have ideas or questions that you would like the consultant team to consider as they advance the feasibility study?

Supporting materials

- Madison to Seneca area plan view
- Study Area Boundary map
- Elevation map
- Discussion questions
- Guiding principles worksheet
- Study assumptions
- Flipcharts, sticky notes, markers

Guiding Principles Worksheet

Draft I-5 Lid Feasibility Study Guiding Principles

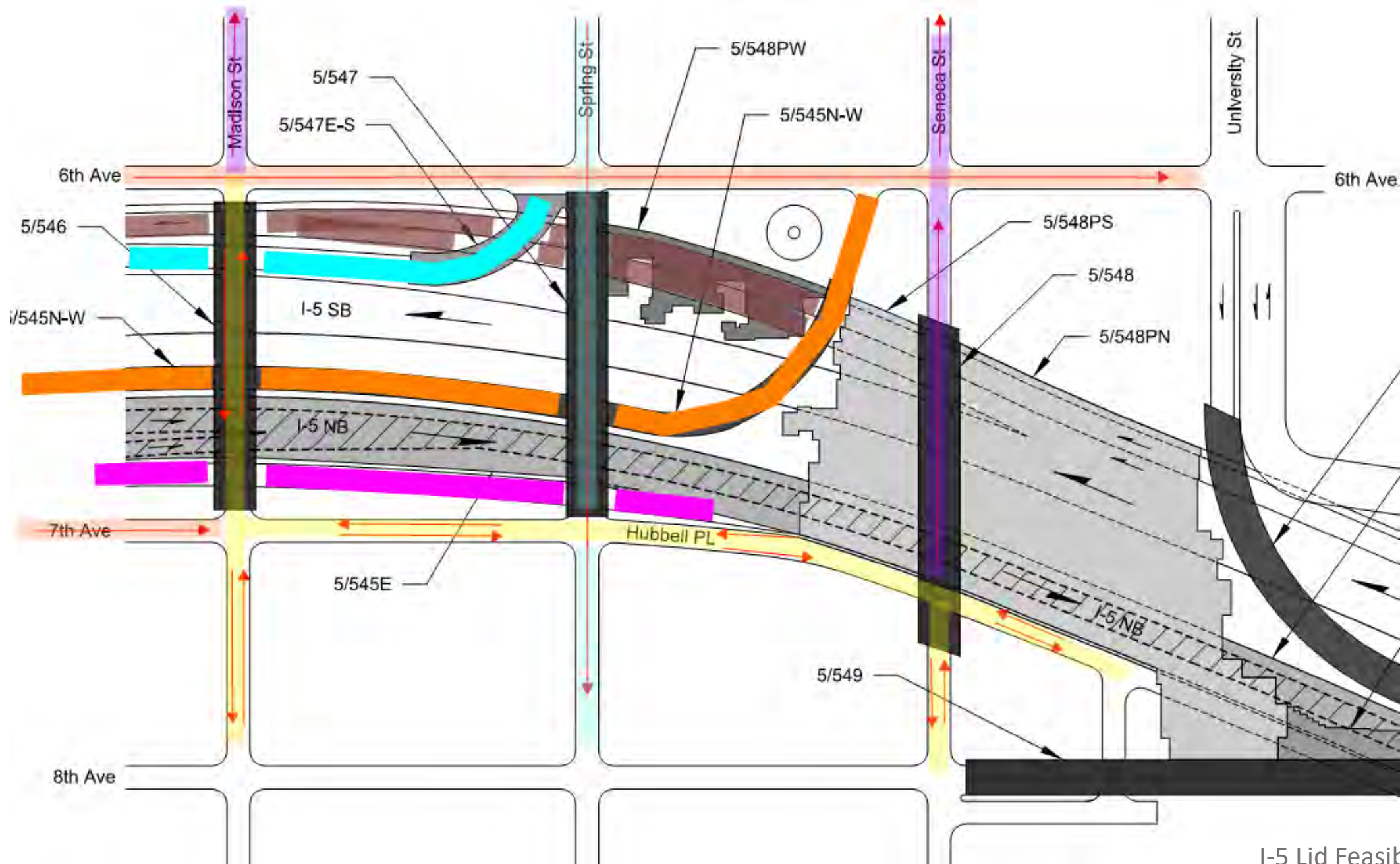
| Guiding Principle | Could include | What is important to you in how this is defined for the I-5 Lid Feasibility Study? |
|-------------------------------|---|--|
| Connectivity | <ul style="list-style-type: none"> • Mobility and multimodal access (to opportunities/goods & services) • Accessibility (ADA) | |
| Complete community | <ul style="list-style-type: none"> • Open space, services, housing, schools | |
| Equity | <ul style="list-style-type: none"> • Race and social justice • History, today/future displacement, gentrification • Economic development and opportunity | |
| Health | <ul style="list-style-type: none"> • Physical and mental health • Air quality • Noise | |
| Identity | <ul style="list-style-type: none"> • People, place, culture | |
| Affordability | <ul style="list-style-type: none"> • Residential/housing affordability • Commercial affordability | |
| Sustainability and resilience | <ul style="list-style-type: none"> • Environmental stewardship • Structural integrity | |
| Other | | |
| Other | | |
| Other | | |
| Other | | |

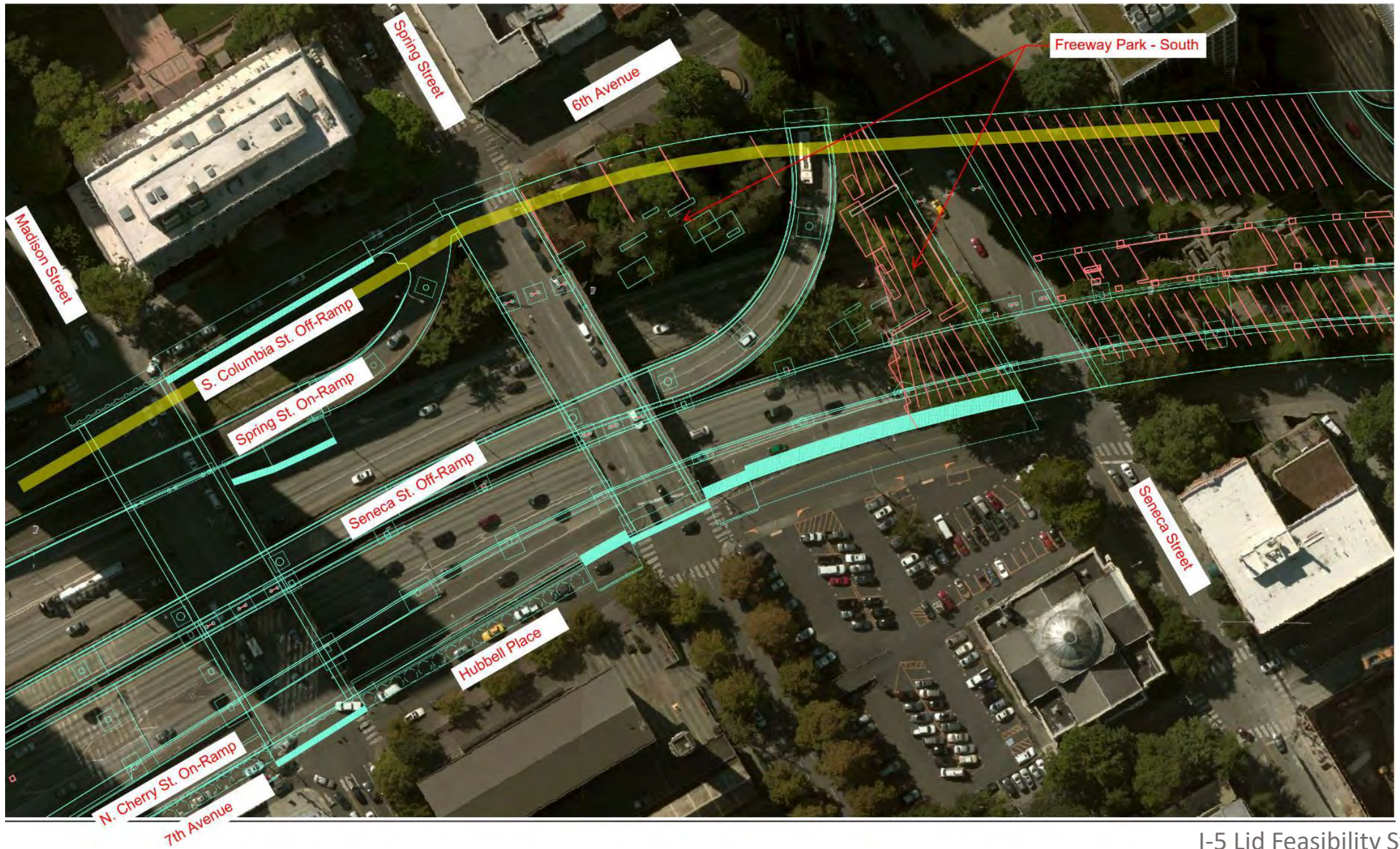
Example Guiding Principles for Reference

| Guiding Principle | Definition | Source |
|-------------------------------------|---|---|
| Community | <ul style="list-style-type: none"> Developing strong connections between a diverse range of people and places | Seattle 2035 Comprehensive Plan |
| Environmental stewardship | <ul style="list-style-type: none"> Protect and improve the quality of our global and local natural environment | Seattle 2035 Comprehensive Plan |
| Economic opportunity and security | <ul style="list-style-type: none"> A strong economy and a pathway to employment is fundamental to maintaining our quality of life | Seattle 2035 Comprehensive Plan |
| Race and social equity | <ul style="list-style-type: none"> Limited resources and opportunities must be shared; and the inclusion of under-represented communities in decision-making processes is necessary | Seattle 2035 Comprehensive Plan |
| People first | <ul style="list-style-type: none"> Cultivate Community: Create places and experiences that bring us together and encourage positive interactions Promote Health: Support active lifestyles that foster physical and emotional well-being | Imagine Greater Downtown |
| Racial, economic and social justice | <ul style="list-style-type: none"> Lead with Equity: Improve outcomes for the most vulnerable groups and individuals Proactive Participation: Initiate, invite, listen to, respect, and empower all people | Imagine Greater Downtown |
| Access to opportunity for all | <ul style="list-style-type: none"> Provide Efficient Mobility Options: Implement distributed, convenient, reliable, and accessible mobility options Connect Safely: Ensure that streets and public spaces are safe, accessible, and comfortable Prioritize People and Goods: Create efficiency where needed to keep streets moving | Imagine Greater Downtown |
| Environmental stewardship | <ul style="list-style-type: none"> Be Bold Leaders: Model climate positive policies and actions for a sustainable future Let Nature Thrive: Foster connections with nature and integrate natural settings into daily life | Imagine Greater Downtown |
| Cultural diversity | <ul style="list-style-type: none"> Celebrate Seattle: Enhance each neighborhood's identity and individual belonging in streets and public spaces Honor All Cultures: Acknowledge the triumphs and challenges of our intersecting and sometimes conflicting pasts | Imagine Greater Downtown |
| Collaboration | <ul style="list-style-type: none"> Co-Create Success: Engage people to develop shared outcomes that invest in future generations Take the Long View: Steadily build an honorable legacy together | Imagine Greater Downtown |

Key Study Assumptions

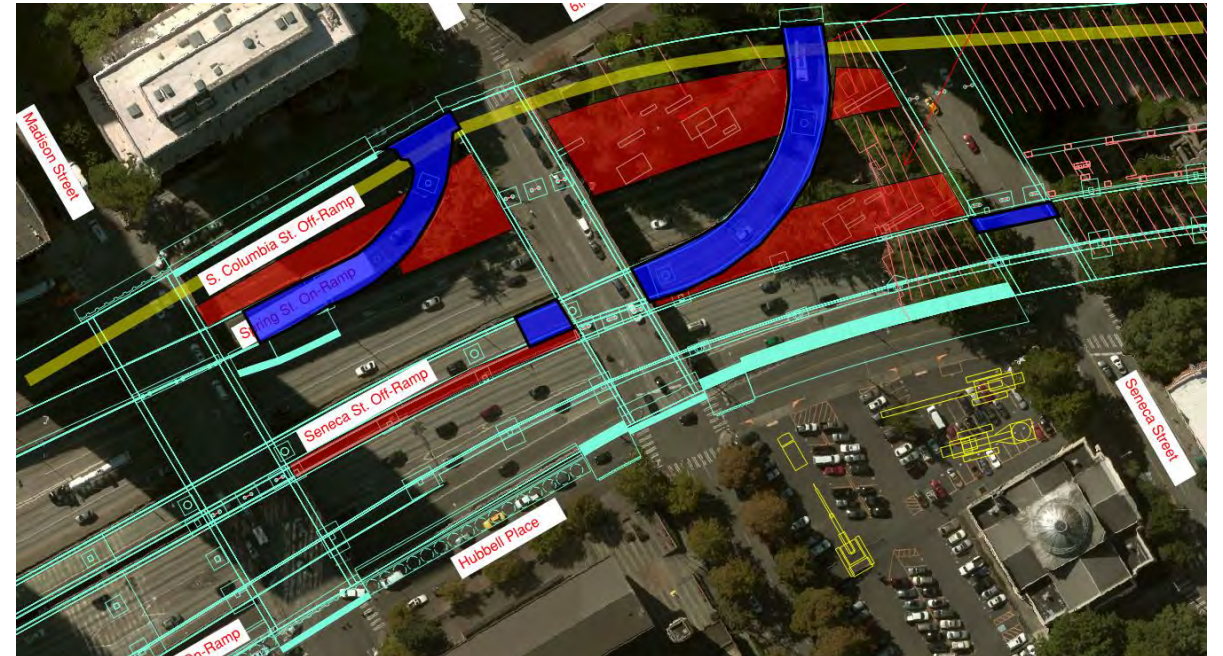
- The feasibility study will not make any decisions about the future of the I-5 corridor
- Projects constructed by April 2019 are included in the feasibility assessment, projects in planning are not considered to be built
- Existing structures are not being assessed for deficiencies; PSRC 2018 State Facilities Action Plan is the basis for the I-5 asset analysis
- Existing bridges, ramps, or other structures within the structural assessment boundary can be removed, modified or replaced, for the purpose of the analysis
 - Removal of ramps would require additional analysis, beyond this study, to address potential implications
- The study will not assess structural modifications to the existing lids at Freeway Park and the Convention Center beyond potential edge integration with a future lid
- The lid will be a conduit for economic growth in the region; ownership, funding, and maintenance may be shared by more than one public or private entity
- Economic analysis will be conducted for a 2035 buildout with full completion of major investments by Sound Transit, WSDOT, SDOT, and King County and informed by the PSRC Transportation Plan
- The economic and financial feasibility will be informed by the analysis of development program test cases
- The analysis will consider private sector revenue generating uses on the lid; current state or federal policies that may prohibit such use will be identified as barriers to implementation
- Development program test cases allow us to monetize potential benefits aligned with the guiding principles; these are not definitive proposed programs for the lid for they are not defined under a comprehensive planning process with significant public input
- Geospatial boundaries for the LFS urban context analysis will consider census tracts included within a 15-minute walkshed from the structural assessment boundary





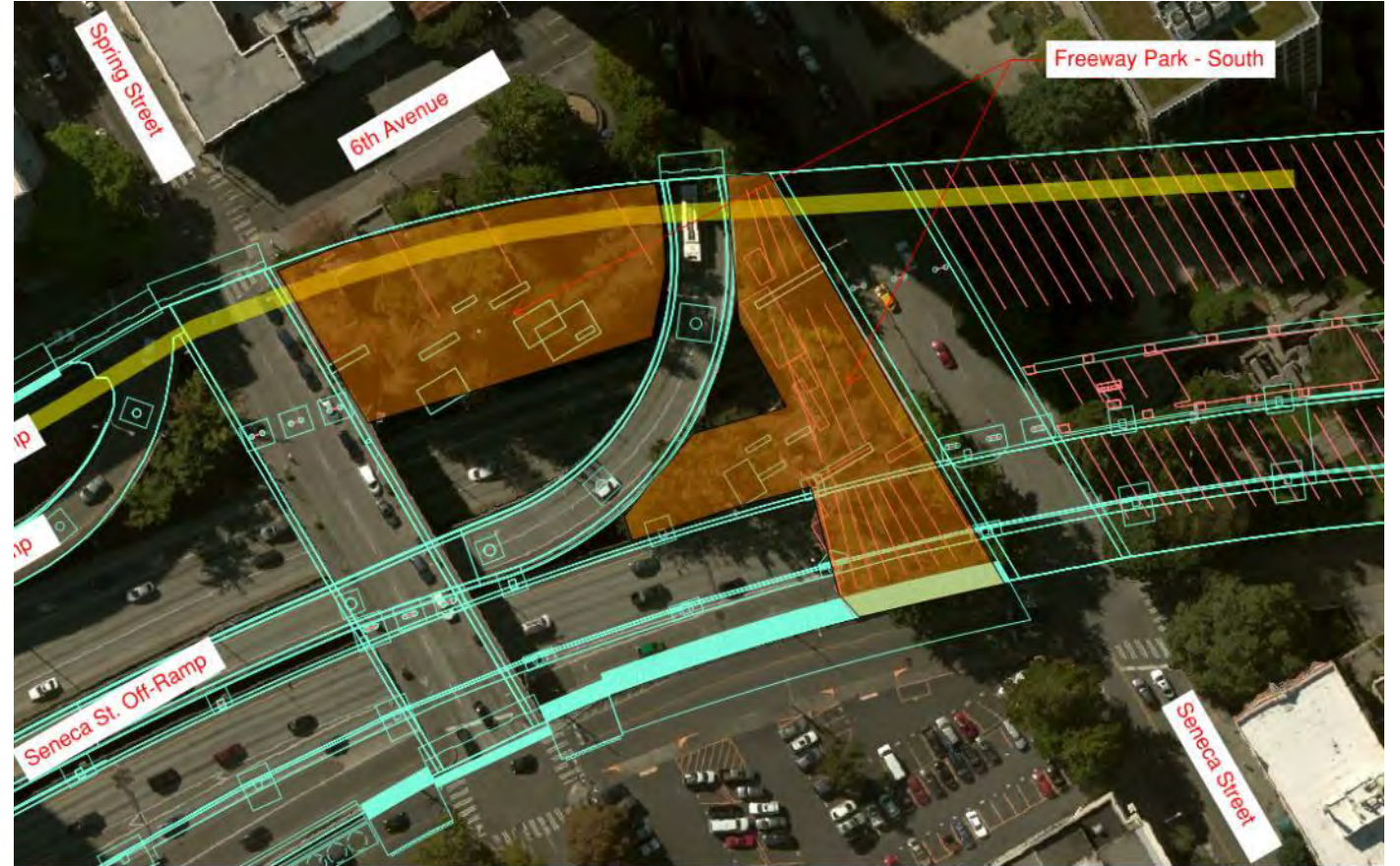
Existing Freeway Constraints

- Construction considerations (overhangs and ramps)
- Vertical clearance



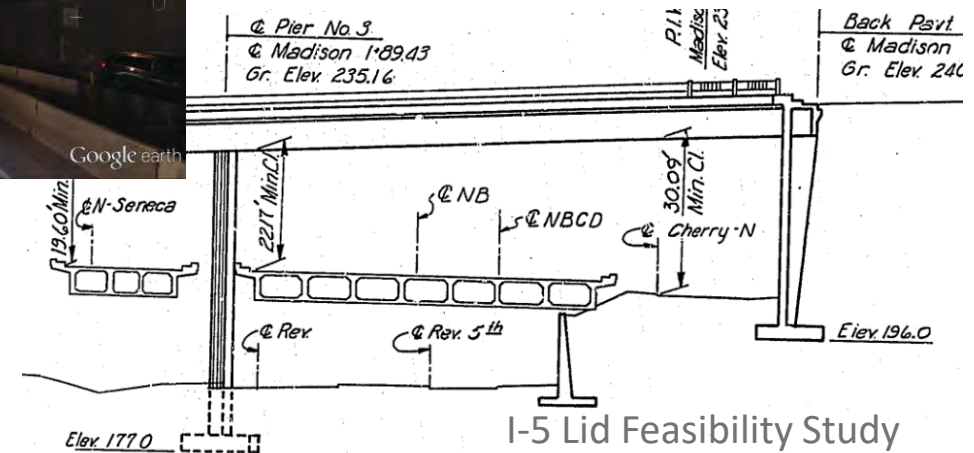
The Lid 'Edges'

- Freeway Park; possible historic landmark
- Integration of lid edges to street level
- Lid use considerations
- Ramp connections, reconstruction, or re-location of access



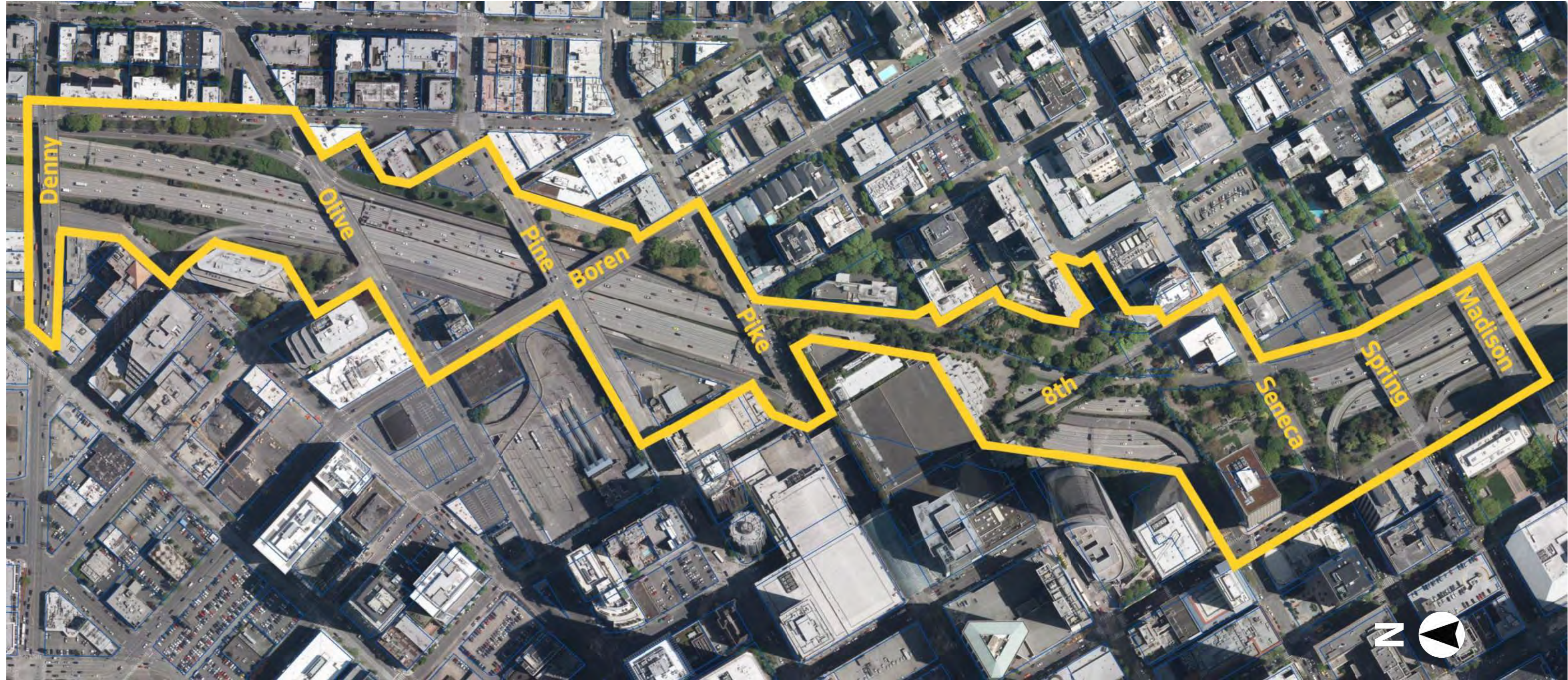
Constructability

- Intermediate piers
- Wall abutment support through driven piles or drilled shafts (load on existing walls along 6th Avenue and Hubbell Place)
- Temporary impacts



Structural Assessment Boundary

June 11, 2019



Legend

— Lid Structural Assessment Boundary

Elevation Model (Feet)

| |
|-----------|
| 0 - 20 |
| 21 - 40 |
| 41 - 60 |
| 61 - 80 |
| 81 - 100 |
| 101 - 120 |
| 121 - 140 |
| 141 - 160 |
| 161 - 180 |
| 181 - 200 |
| 201 - 220 |
| 221 - 240 |
| 241 - 260 |
| 261 - 280 |
| 281 - 300 |
| 301 - 320 |
| 321 - 340 |
| 341 - 360 |
| 361 - 380 |
| 380+ |

* 5ft Contours

