

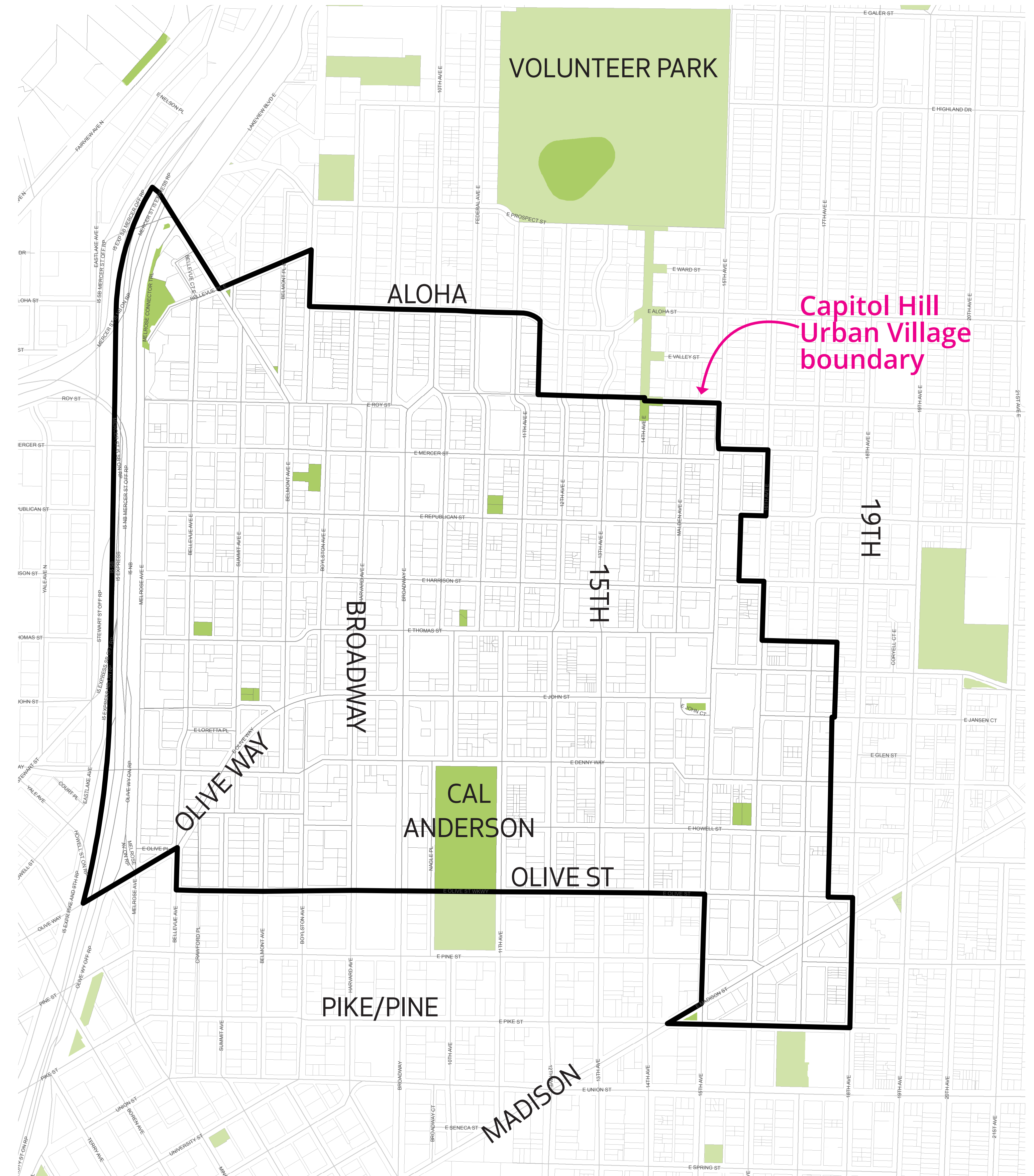
# Welcome to the Community Open House

Thursday, November 16, 2017

## Tonight's Agenda

- 5:00 - 6:00** Browse open house materials, talk with project team, & provide feedback
- 6:00-6:15** Presentation
- 6:15-6:30** Question & Answer
- 6:30-7:00** Browse open house materials, talk with project team, & provide feedback

Where do you **live**, **work**, and **play** in Capitol Hill?



# What do you love about Capitol Hill?

The page contains 18 hand-drawn, irregular thought bubble shapes of various sizes and orientations, scattered across the page. Each bubble is a simple outline with a small tail pointing towards the bottom right. Some bubbles have small stars and dots near their tails, suggesting a whimsical or thoughtful theme. The bubbles are intended for users to write their answers to the question 'What do you love about Capitol Hill?'.

# Design Review Program

## What is the Design Review Program?

Design Review is one of the ways we create a better city.

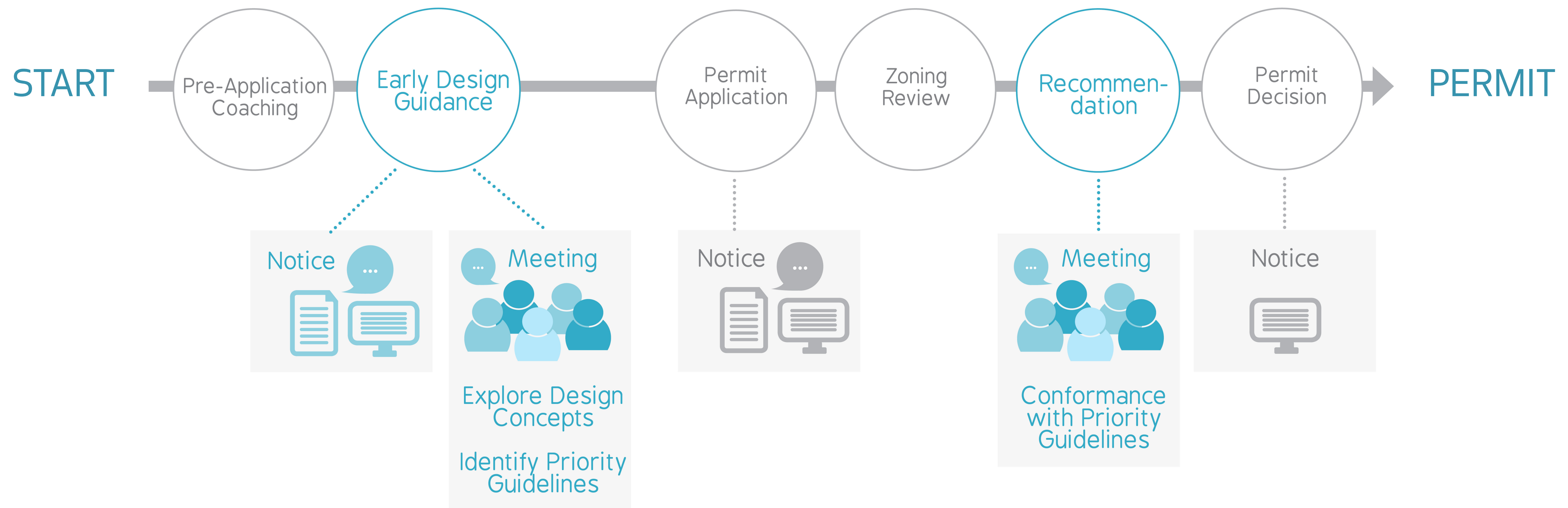
### Design Review:

- Gives citizens and the volunteer Design Review Board members a voice in the design of most new multifamily and commercial buildings
- Promotes public involvement and communication in the planning process
- Develops contextual design outcomes
- Offers flexibility in the application of development regulations

### Design Review involves:

- Design guidelines
- Public participation
- Professionals that review a broad set of design considerations

## What happens during Design Review?



# Design Guideline Overview

## What are Design Guidelines?

Design guidelines are the backbone of the Design Review Program

- Direct designers and project reviewers to design new buildings that enhance their surroundings
- May apply citywide, or within certain neighborhoods

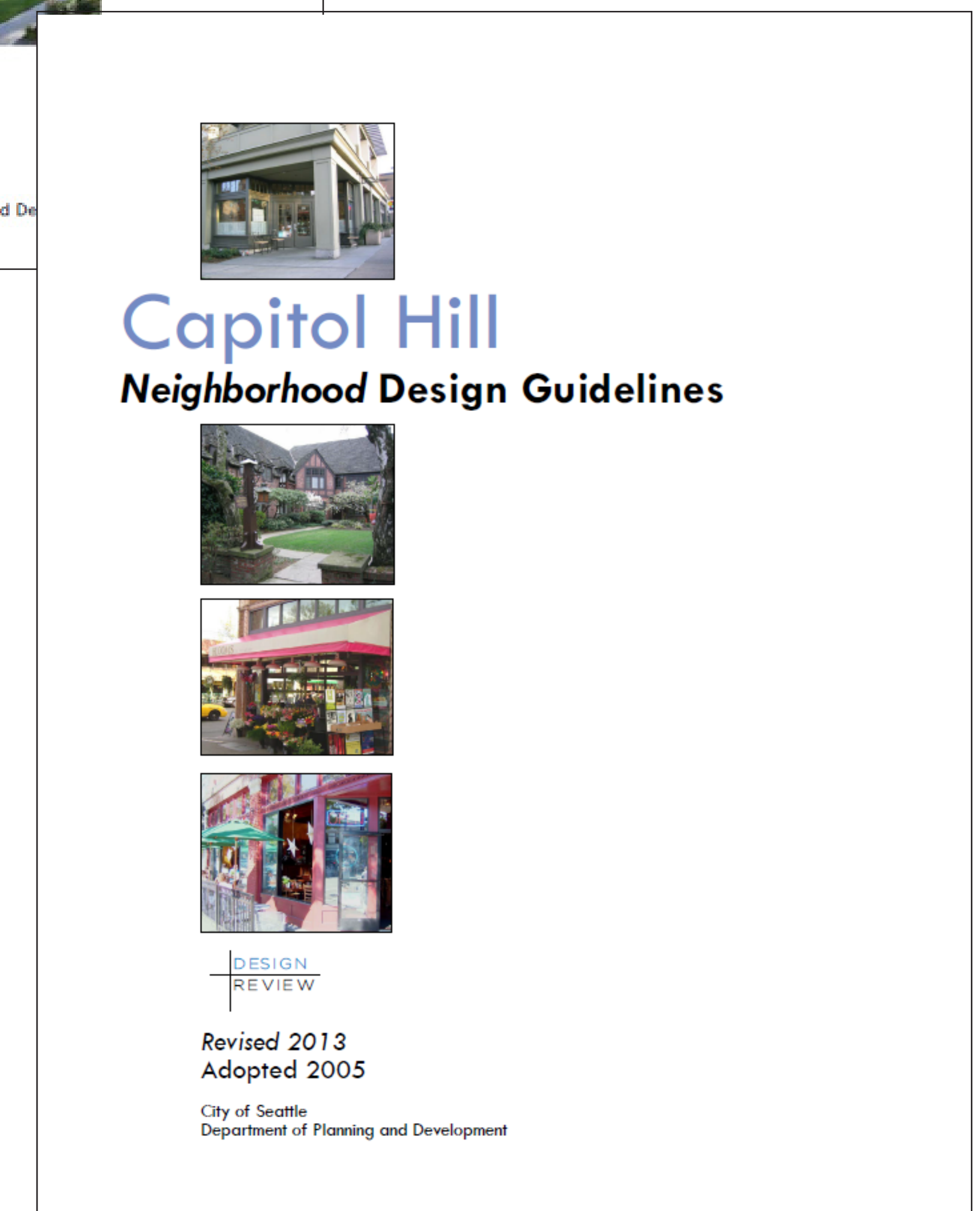
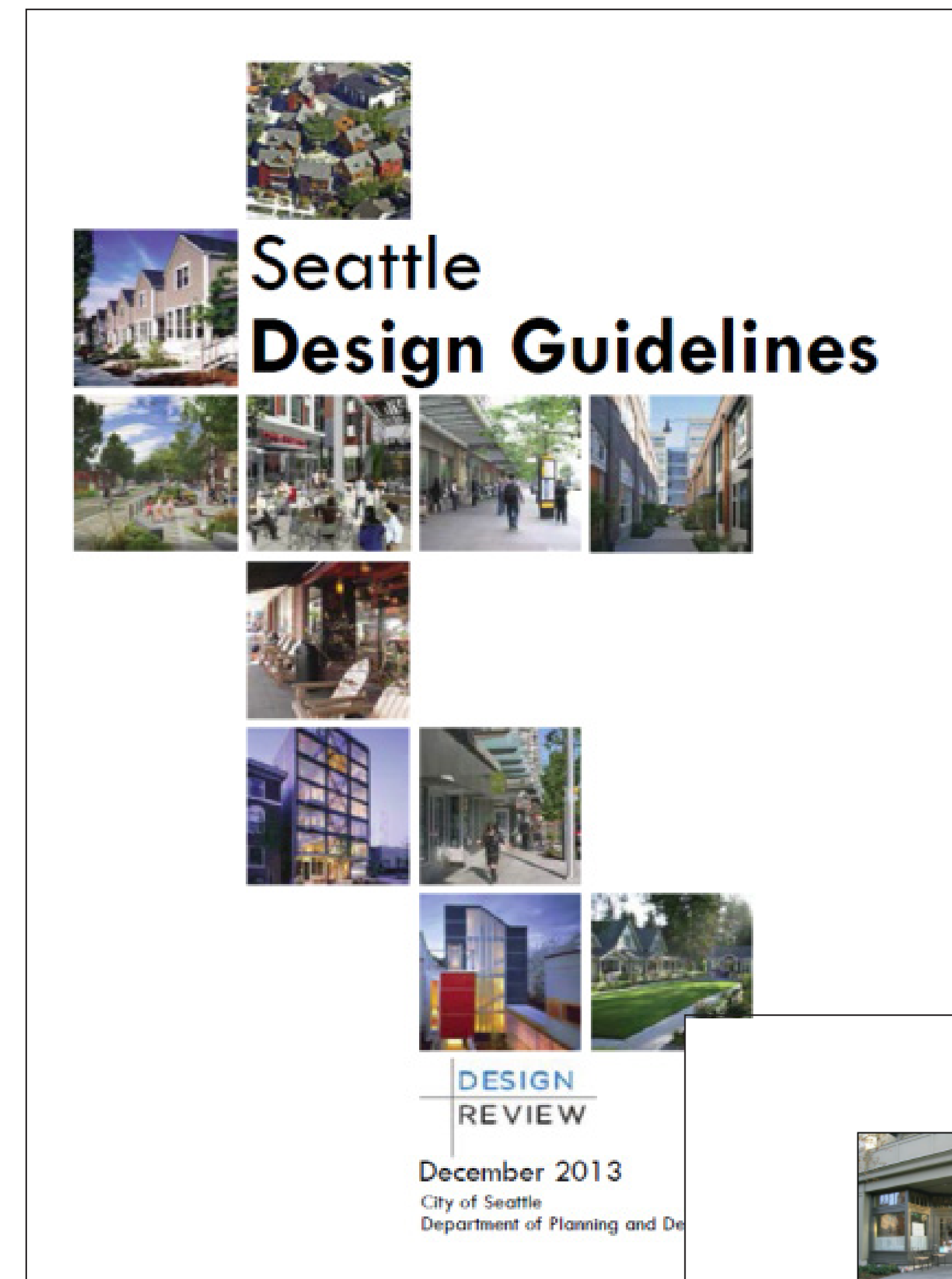
## How are they used?

Design guidelines are used by the Design Review Boards and City staff to assess new building.

- Help shape what is allowed by the Land Use Code
- Set the parameters for discussion about building siting, shape, and materials

## What are Neighborhood Design Guidelines?

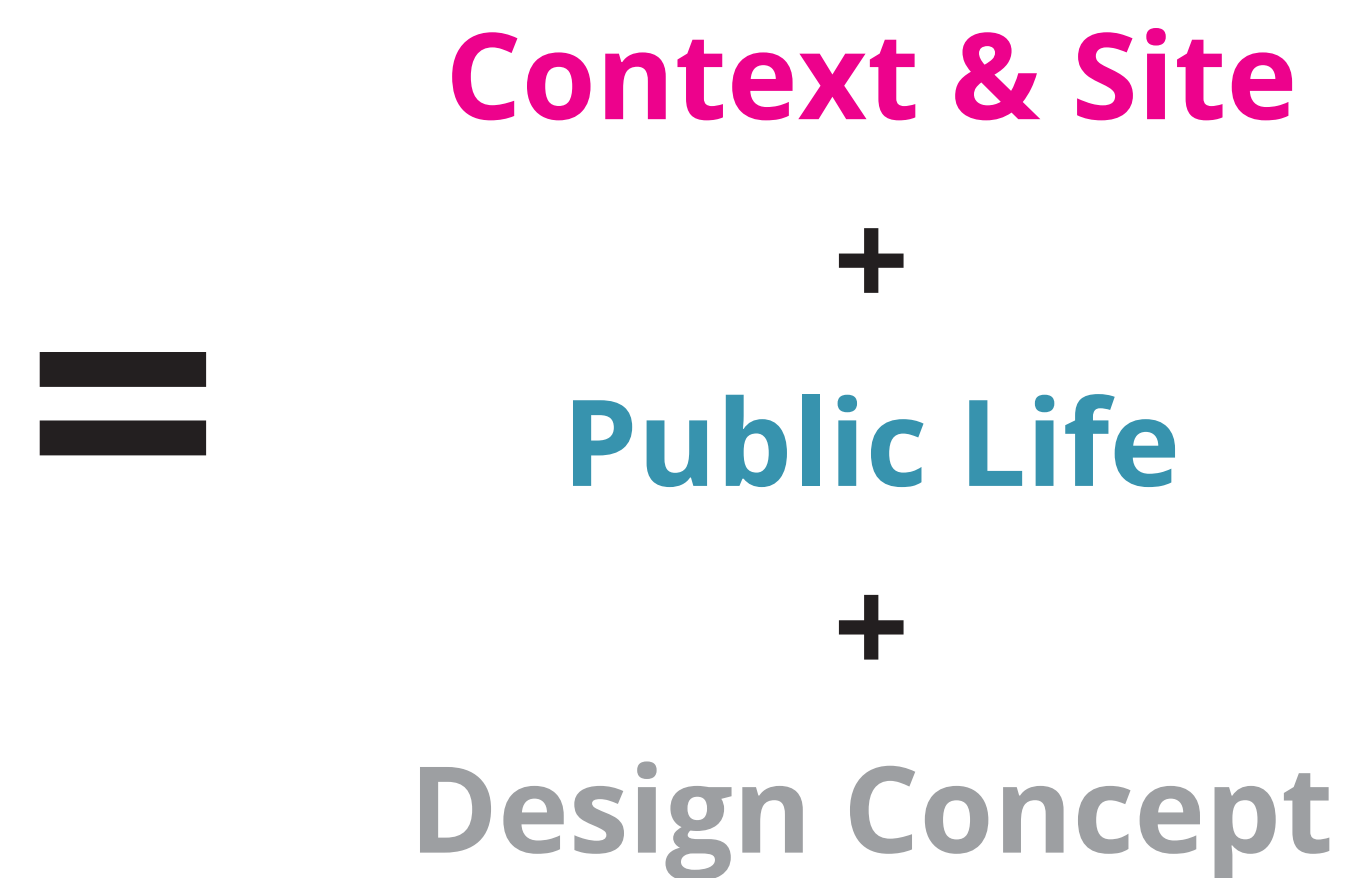
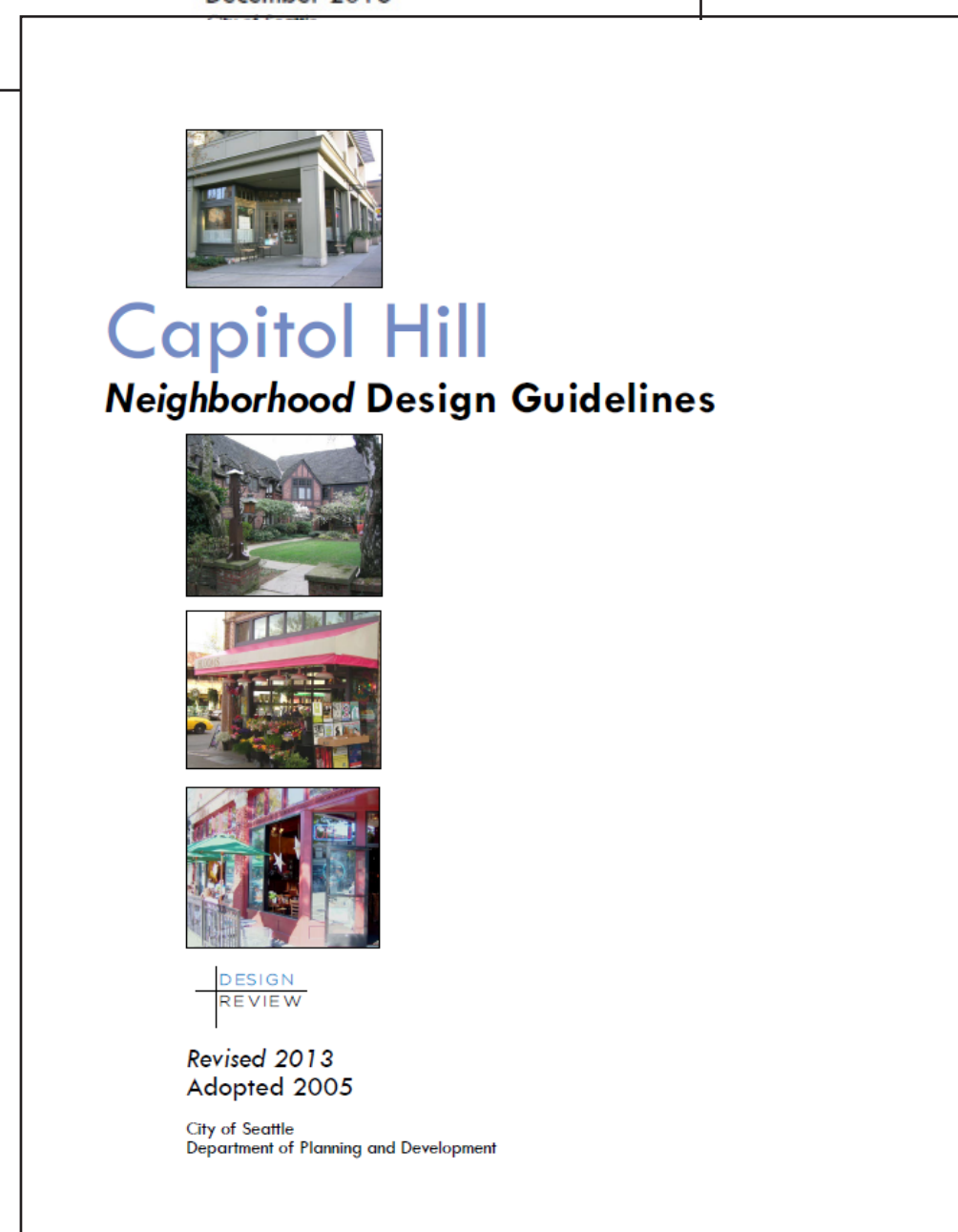
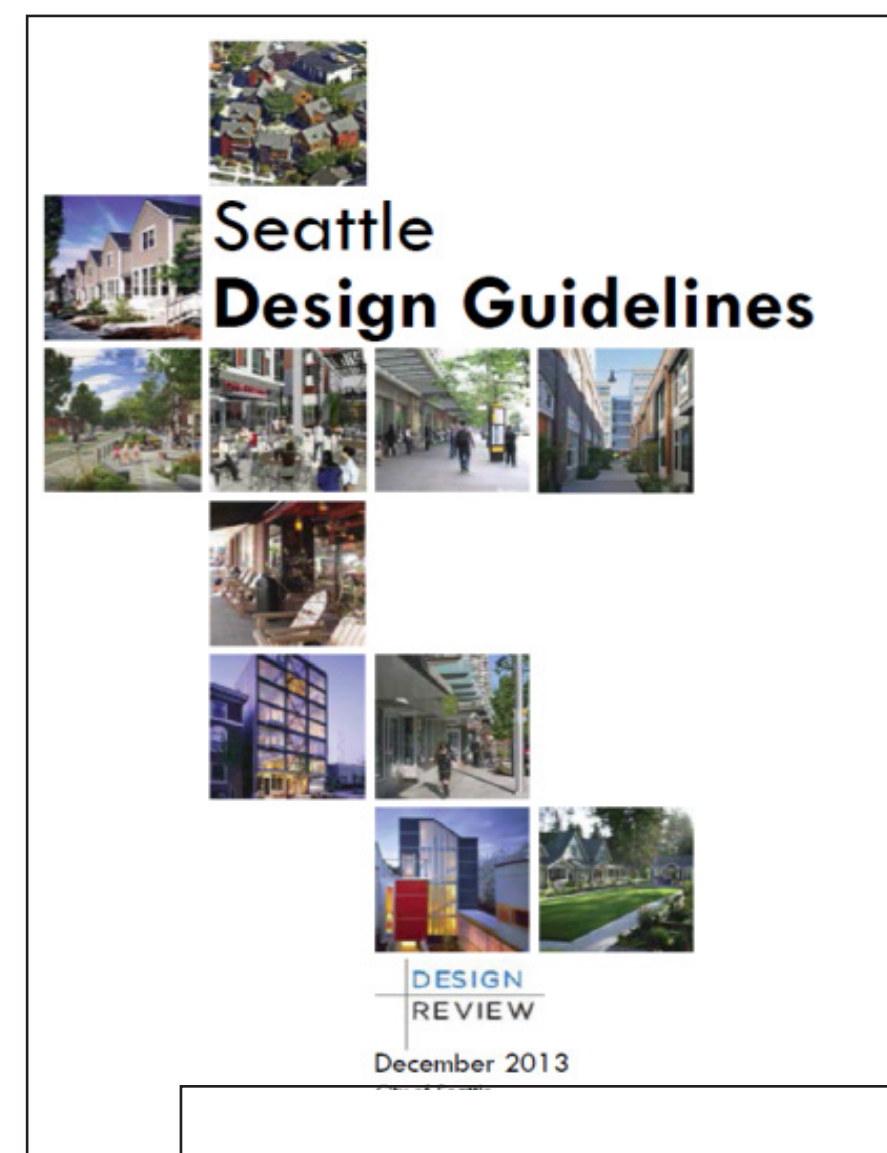
- Supplement Citywide Design Guidelines
- Address issues unique to a particular neighborhood



# Design Guideline Overview

## What do Design Guidelines address?

Design guidelines address design-related issues within three topic areas:



## They can

- Indicate the community's preferred design approaches
- Help architects and developers make design decisions
- Identify most important features of neighborhood character
- Help protect visual aspects of a neighborhood

## They cannot

- Change zoning, allowed height, or density (units)
- Require design changes
- Control how the spaces in the building are used
- Significantly reduce a project's height or size
- Require community benefits or parking

# Organization of Citywide Design Guidelines

## Context & Site

### CS1. Natural Systems and Site Features

- Energy Use
- Sunlight and Natural Ventilation
- Topography
- Plants and Habitat
- Water

### CS2. Urban Pattern and Form

- Location in the City & Neighborhood
- Adjacent Sites, Streets, Open Space
- Relationship to the Block
- Height, Bulk, Scale

### CS3. Architectural Context & Character

- Emphasizing positive neighborhood attributes, local history, and culture

## Public Life

### PL1. Open Space Connectivity

- Network of Open Spaces
- Walkways and connections
- Outdoor uses and activities

### PL2. Walkability

- Accessibility
- Safety and security
- Weather protection
- Wayfinding

### PL3. Street-level interaction

- Building entries
- Retail edges
- Residential edges

### PL4. Active Transportation

- Entry locations and relationships
- Planning ahead for bicyclists
- Planning ahead for transit

## Design Concept

### DC1. Project Uses and Activities

- Arrangement of interior uses
- Vehicular access and circulation
- Parking and service uses

### DC2. Architectural Concept

- Massing
- Architectural and facade composition
- Secondary architectural features
- Scale and texture
- Form and function

### DC 3. Open Space Concept

- Building-open space relationship
- Open space and activities
- Design

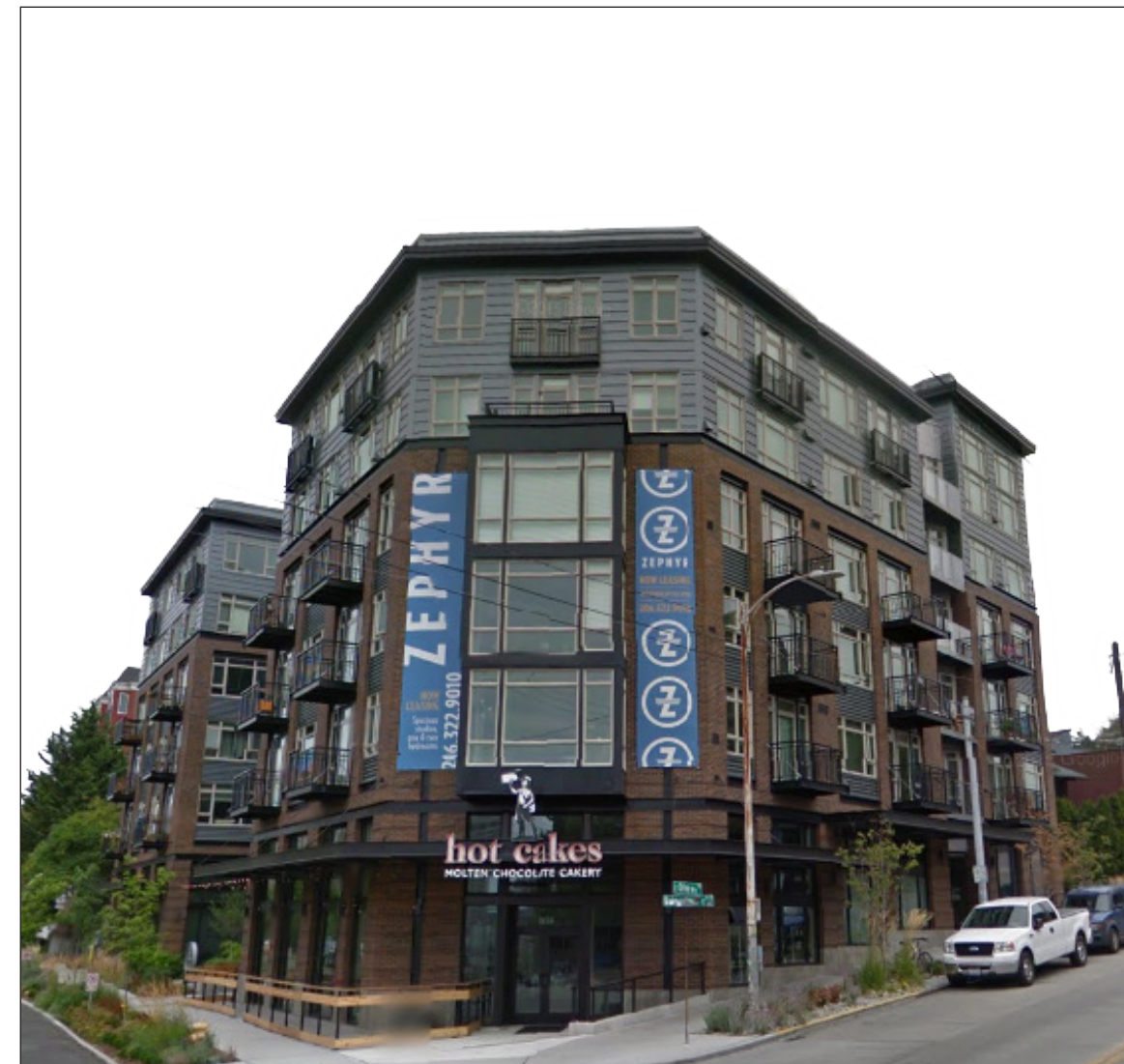
### DC4. Materials

- Exterior elements and finishes
- Signage
- Lighting
- Trees, landscape, hardscape materials

# Design Guideline Overview

## When do Citywide Design Guidelines apply?

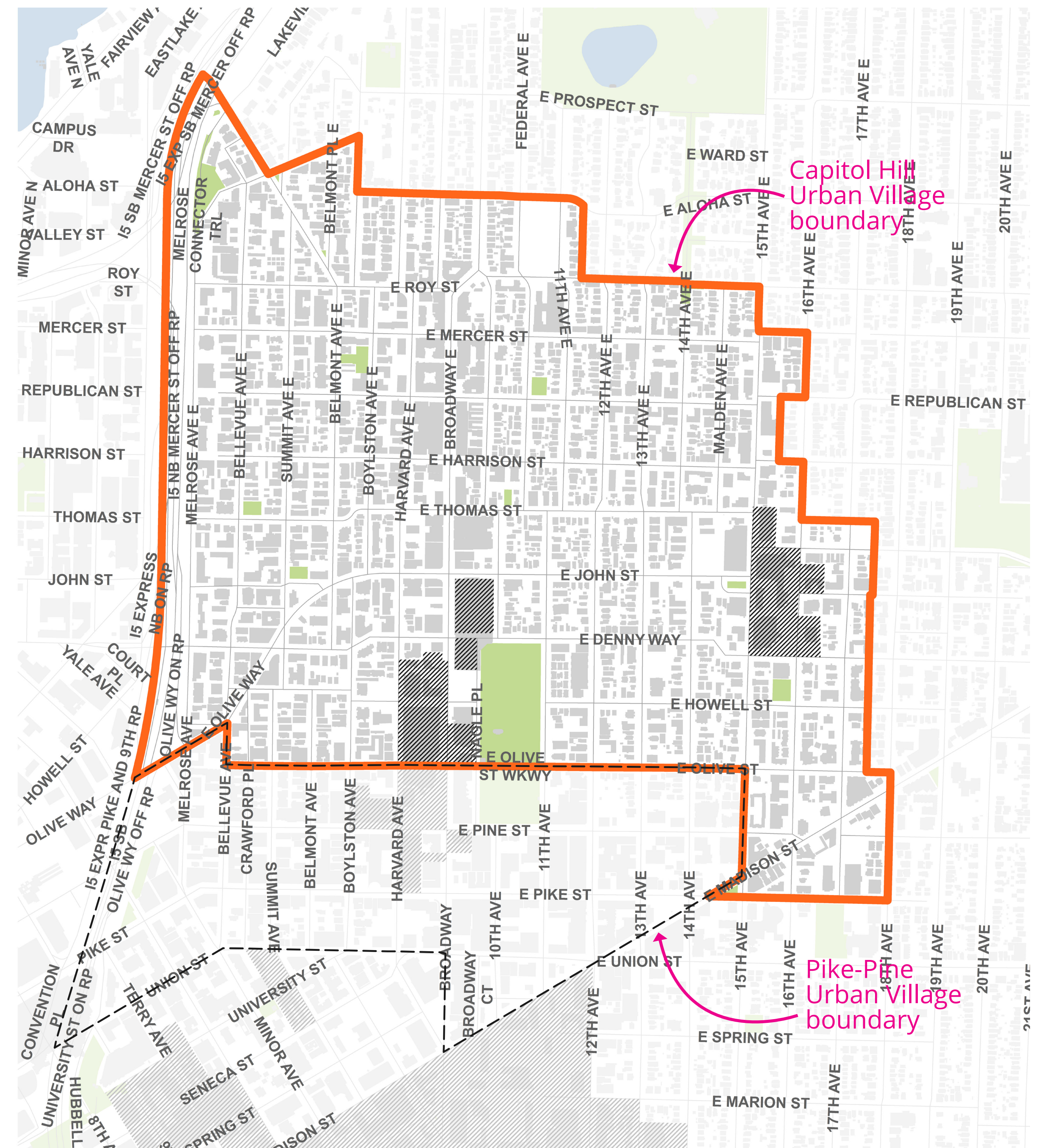
Design guidelines apply to all proposed new buildings that go through the City's Design Review program (most commercial, multifamily, and mixed-use buildings).



Images: Google Street View

## Where do Neighborhood Design Guidelines apply?

Neighborhood Design Guidelines apply to new buildings in specific geographic areas. Capitol Hill's Design Guidelines apply to projects located in the Capitol Hill Urban Village.



# Purpose of Update

## What will updated neighborhood design guidelines do?

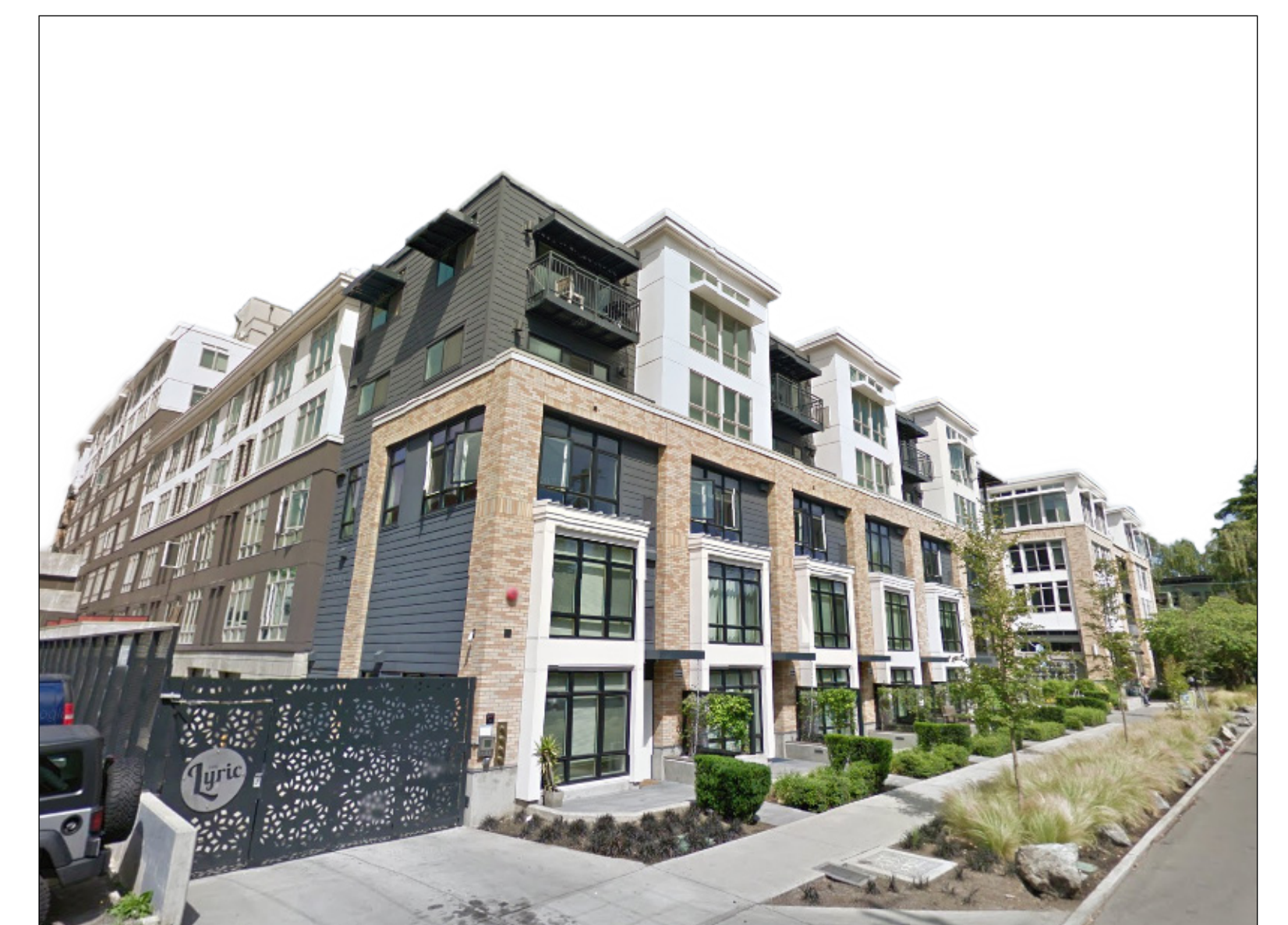
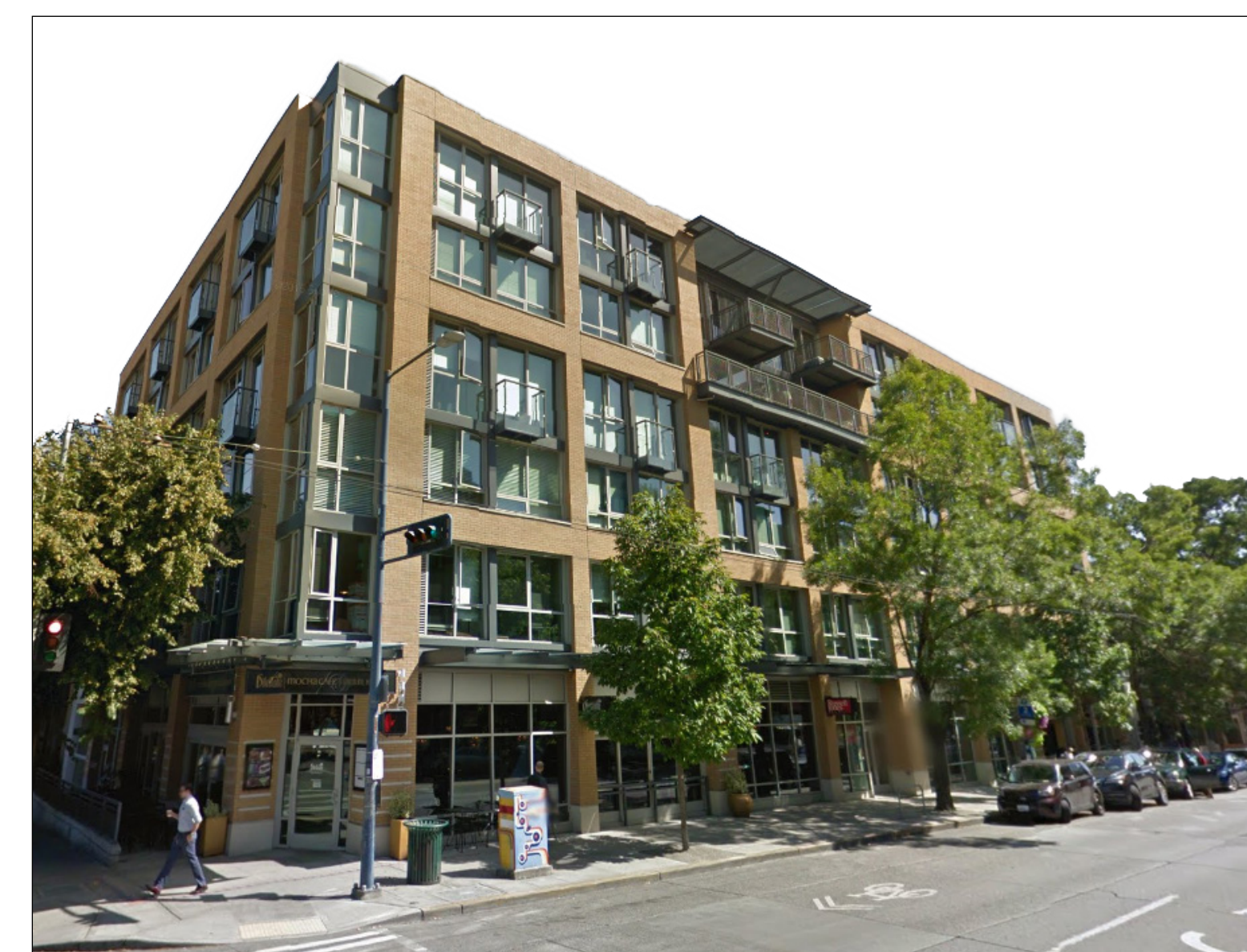
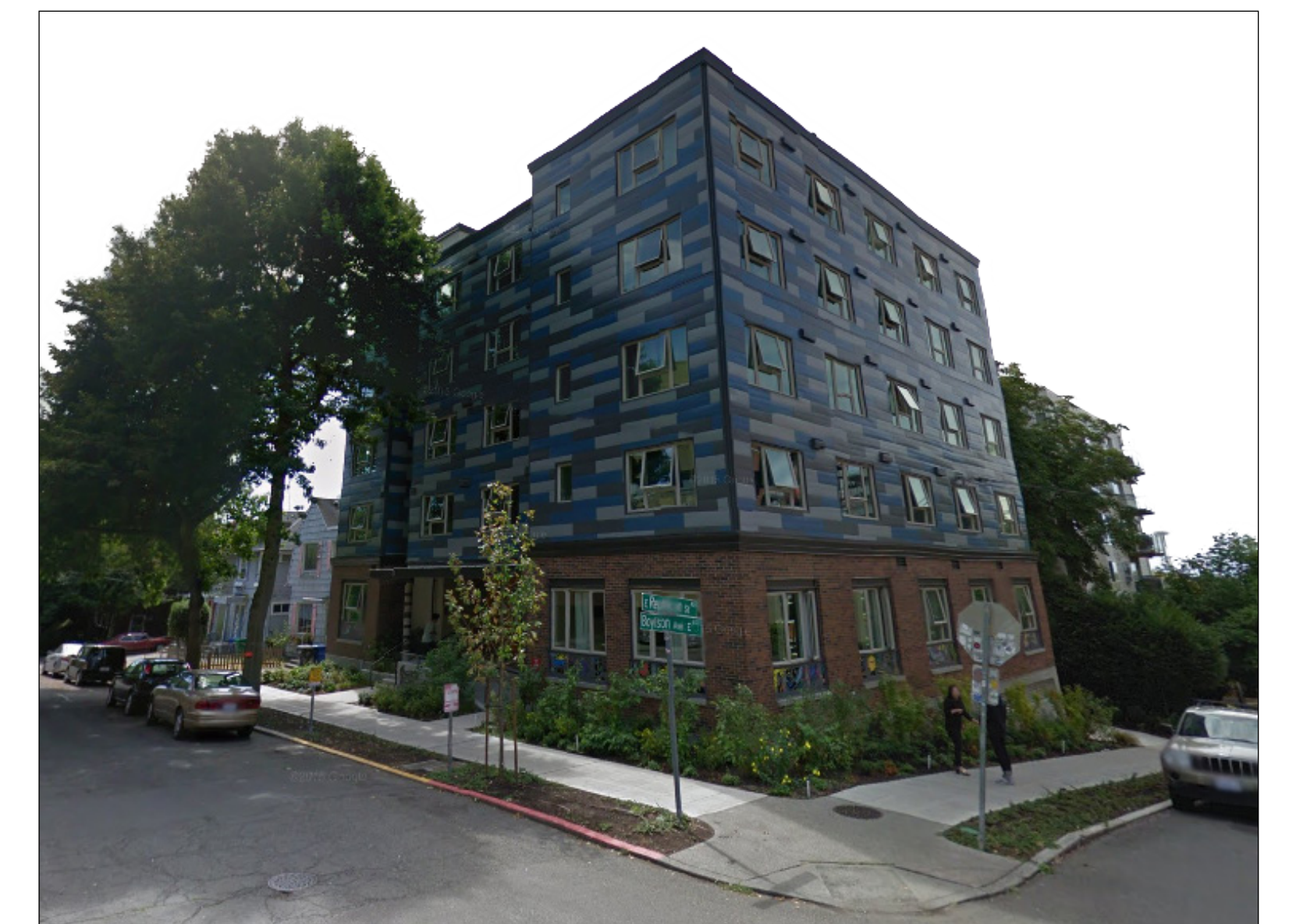
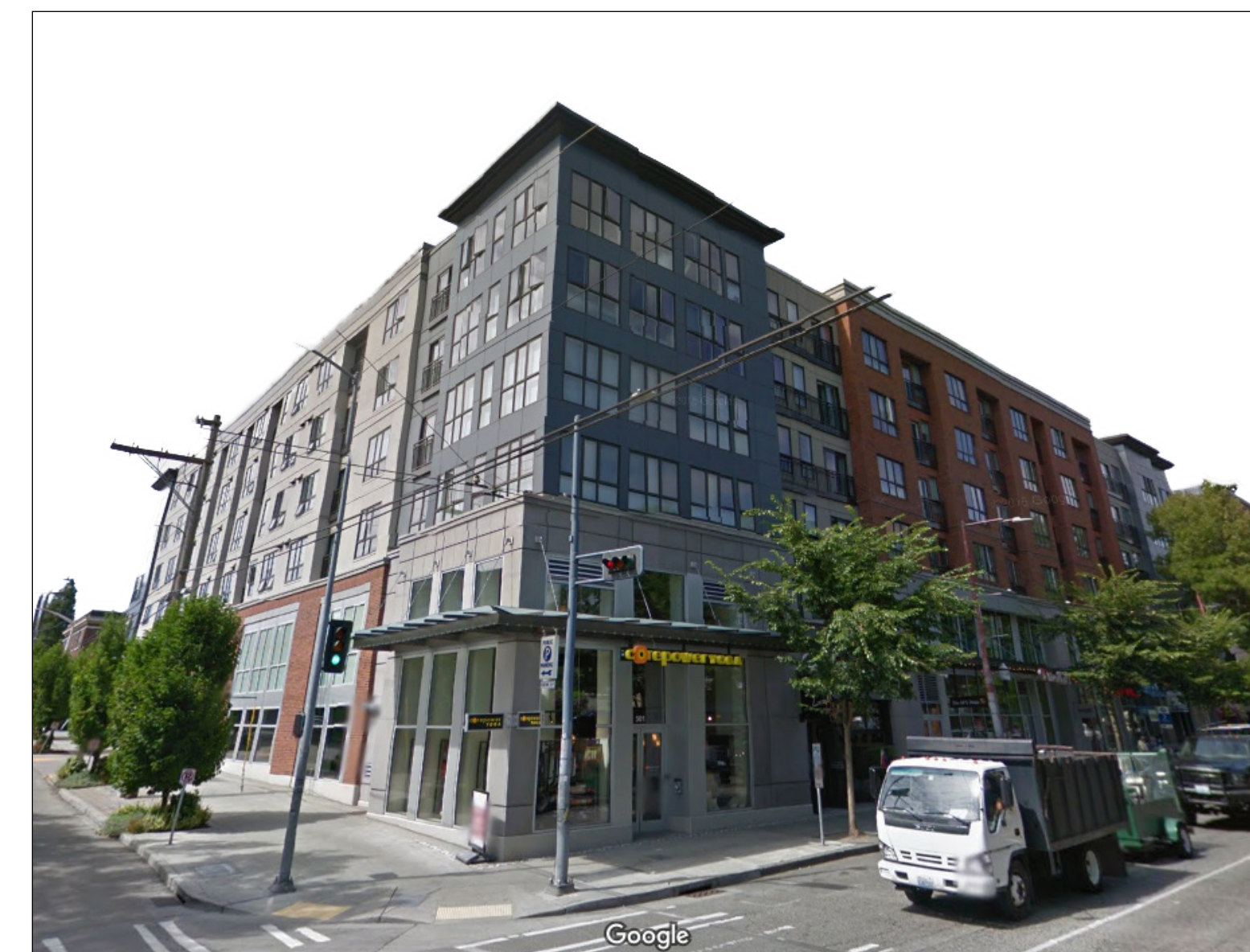
The updated guidelines will help shape the look and feel of future development to reflect the community's current priorities and preferences.

## Why update the existing neighborhood guidelines?

- Reflect the changes in the look and feel of the neighborhood since the guidelines were adopted 10+ years ago
- Respond to recent changes in the neighborhood related to light rail station planning
- Incorporate new neighborhood priorities, including the livability and ecological goals of the Capitol Hill EcoDistrict
- Respond to proposed HALA Mandatory Housing Affordability zoning changes
- Reflect updates to Citywide guidelines and eliminate duplication
- Support neighborhood community engagement efforts, such as Pike Pike Urban Neighborhood Council / Land Use Review Committee

## What about Pike-Pine?

- Neighborhood design guidelines for the Pike-Pine Corridor were updated earlier this year



Images: Google Street View, Schemata Workshop/Hewitt Architects



# Update Process

## Who is involved?

City of Seattle teamed up with Capitol Hill EcoDistrict, a project of Capitol Hill Housing, and a Working Group of local community members for this update.

### Work Group Members

Leslie Bain  
 Brian Baker  
 Matthew Benedict  
 Don Blakeney  
 Jess Blanch  
 Lana Blinderman  
 McCaela Daffern  
 Phyllis Gretchenuk

John Feit  
 Whitney Fraser  
 Robert Ketcherside  
 Mike Mariano  
 Erik Rundell  
 Saunatina Sanchez  
 Alicia Daniels Uhlig

### Project Team



**Seattle**

Office of Planning & Community Development  
 Department of Construction & Inspections



## Project Timeline



# What We've Heard

In conversations this summer and fall, the volunteer work group has identified 9 possible themes for priority design issues for Capitol Hill. Have we missed anything that is really important to you?

**Arts & Culture**

**Storefronts**

**Architectural Mix**

**Facade Details**

**Materials**

**Street-Level Residential**

**Building Shape**

**Landscaping**

**Character Buildings**

# How to Learn More & Stay Connected

Visit our project webpage & sign up for our project email list

<https://www.seattle.gov/opcd/ongoing-initiatives/capitol-hill-design-guidelines-update>

Seattle.gov Mayor Tim Burgess

Search Menu

## Office of Planning & Community Development

Samuel Assefa, Director

Home / Ongoing Initiatives / Capitol Hill Design Guidelines Update

About Us Ongoing Initiatives Meetings & Events

## Capitol Hill Design Guidelines Update

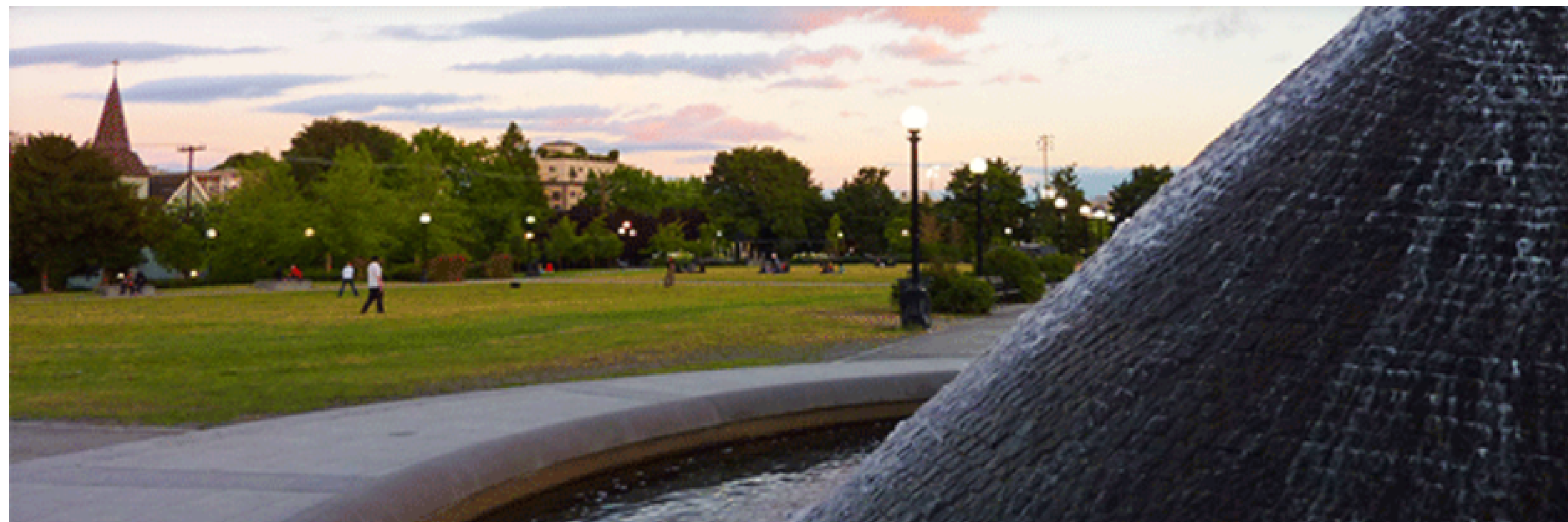


Photo by Dan Bertolet.

- What & Why
- Get Involved
- Project Documents
- Background

### What's Happening Now?

This summer, we started meeting with our local partner, the Capitol Hill Housing EcoDistrict, and a group of community members to better understand how Capitol Hill's current design guidelines have influenced development over the past few years. This fall we started to identify themes that should be addressed in the updated design guidelines.

- NOV 9 THU Lake City Neighborhood Alliance (LCNA) Meeting 6:30pm Lamb of God Church, 12509 27th Ave. NE
  - NOV 9 THU Rainier Beach Action Coalition 6:30pm Neighborhood Health Clinic
  - NOV 16 THU Capitol Hill Design Guidelines Update Open House 5pm Pike/Pine Room of 12th Avenue Arts
- [See All Meetings & Events >](#)

#### Ask Us

- Patrice Carroll, Senior Planner (206) 684-0946 [patrice.carroll@seattle.gov](mailto:patrice.carroll@seattle.gov)
- Christina Ghan, Senior Planner (206) 233-3749 [christina.ghan@seattle.gov](mailto:christina.ghan@seattle.gov)

← Contact info

#### Subscribe to our mailing list

email address

Subscribe

← Sign up here!