

Ocean Pavilion

Jenny A. Durkan
Mayor

Samuel Assefa
Director, OPCD

Brianna Holan, Chair

Justin Clark

Mark Johnson

Rick Krochalis

Amalia Leighton

Vinita Sidhu

Lucas Whitesell

Elaine Wine

Michael Jenkins
Director

Valerie Kinast
Strategic Advisor

Aaron Hursey
Planner

Juliet Acevedo
Administrative Staff

**Office of Planning and
Community Development
Seattle City Hall**
600 4th Avenue, 5th Floor
Seattle, WA 98124

TEL 206-684-0435
FAX 206-233-2784
seattle.gov/designcommission

Commissioners Present
Brianna Holan, Acting Chair
Justin Clark
Mark Johnson
Rick Krochalis
Amalia Leighton
Lucas Whitesell
Elaine Wine

Commissioners Excused
Vinita Sidhu

Non-voting Commissioners Present
Elizabeth Conner
Azzurra Cox

Project Description

The Ocean Pavilion is an extension of the Seattle Aquarium and will provide additional exhibit and educational space as well as a publicly accessible rooftop open space and ground level public plaza adjacent to the Seattle Waterfront development. The Ocean Pavilion project will integrate with the Overlook Walk, which will provide a connection from Pike Place Market to the Waterfront. Key design elements integrated between the two projects include a bridge, overlook area, and south stair and amphitheater area.

Meeting Summary

This was the Seattle Design Commission's (SDC) fifth review of the Ocean Pavilion project. The purpose of this meeting was to review the design development phase (90% design phase) for the project. The SDC voted, 7-0, to approve the design development phase for the Ocean Pavilion project with several recommendations.

Recusals and Disclosures

Brianna Holan– disclosed that her former employer, LMN Architects, is working on the project. She was not a part of the project team while working at the firm.

August 20, 2020

9:00 - 11:00 am

Project Type

Major Project

Phase

Design Development (90% design)

Previous Reviews[3/5/20](#), [4/19/18](#), [7/21/16](#), [7/19/14](#)**Presenters**

Susan Bullerdick

Seattle Aquarium

Colleen Echohawk

Headwater People Consulting

Ben Franz-Knight SOJ

Holly Golden HCMP

Osama Quotah LMN Architects

Mark Reddington LMN Architects

Valerie Segrest

Tribal Cultural Plant Specialist,
Muckleshoot

Andrew tenBrink JCFO

Attendees

Vanessa Abin LMN Architects

Derek Baker Seattle Aquarium

Sally Clark University of Washington

Sean Crawford Seattle Aquarium

Clair Enlow Journalist

Tammy Frederick SDOT

David Graves SPR

Laura Haddad Haddad Druggan

Joy Jacobson FAS

Mike Johnson

Office of the Waterfront

Hanna Kato LMN Architects

Rives Kitchell LMN Architects

Martha Kongsgaard

Kongsgaard Goldman

Samantha Lewis LMN Architects

Steve Pearce

Office of the Waterfront

Babs Pinette Seattle Aquarium

Lisa Rutzik SDCI

Mack Smith Edelman

Mary Anne Smith LMN Architects

Marianne Stover Seattle Real Estate
& Permit Consulting

Baewon Suh JCFO

Ruri Yampolsky Office of the Water-
front

Figure 1: Project location

Summary of Presentation

Colleen Echohawk, Headwater People Consulting, Ben Franz-Knight, SOJ, Valerie Segrest, Tribal Cultural Plant Specialist, Andrew tenBrink, JCFO, and Osama Quotah and Mark Reddington, LMN Architects presented the design development phase of the Ocean Pavilion project. The team began the presentation by providing background information, such as the continued growth and development of the project team and ongoing community engagement process, both of which include involvement with Coast Salish Tribes and Indigenous communities.

The team then discussed their approach to the overarching vision that is guiding the continued development of the project design. The vision addresses the incorporation of environmental history and conservation efforts as well as the project's integration with other projects along the Waterfront Seattle corridor, specifically the Overlook Walk project which is integrated into the design of the Ocean Pavilion facility. The Ocean Pavilion building will be located along the Waterfront, adjacent to the pedestrian promenade between the relocated Alaskan Way to the East of the building and the Waterfront seawall to the West of the building. The building will provide additional programming and exhibit space for the existing Seattle Aquarium facility, located across the pedestrian promenade on Piers 59 & 60 (see figure 1). The Ocean Pavilion will serve as part of the Waterfront's Circulation network, providing stair and elevator access from the street level to the roof top open space that is integrated with the Waterfront's Overlook Walk project, which will provide connectivity between the Pike Place Market and Waterfront.

The proposed planting and materials palettes for the public space and building façade were influenced by the project's overarching vision and will focus on culturally significant planting. The planting palette will include different environmental zones, ranging from upland to shoreline habitats, to tell a story about the surrounding natural environment and the cultural landscape. The roof top public space will include design elements to show portions of a larger ecosystem that will be represented along the Overlook Walk project. Paving materials on the roof top public space will also be designed to represent a portion of the migration patterns of local salmon populations, a theme that will extend throughout the Ocean Pavilion and Overlook Walk projects (see figure 2). Other patterns will be sandblasted and etched into the concrete paved areas. Many of the proposed site furnishing, such as benches, handrails, and seating steps will be constructed out of wood, much of which will be locally sourced from Tribal managed forest (see figure 3).

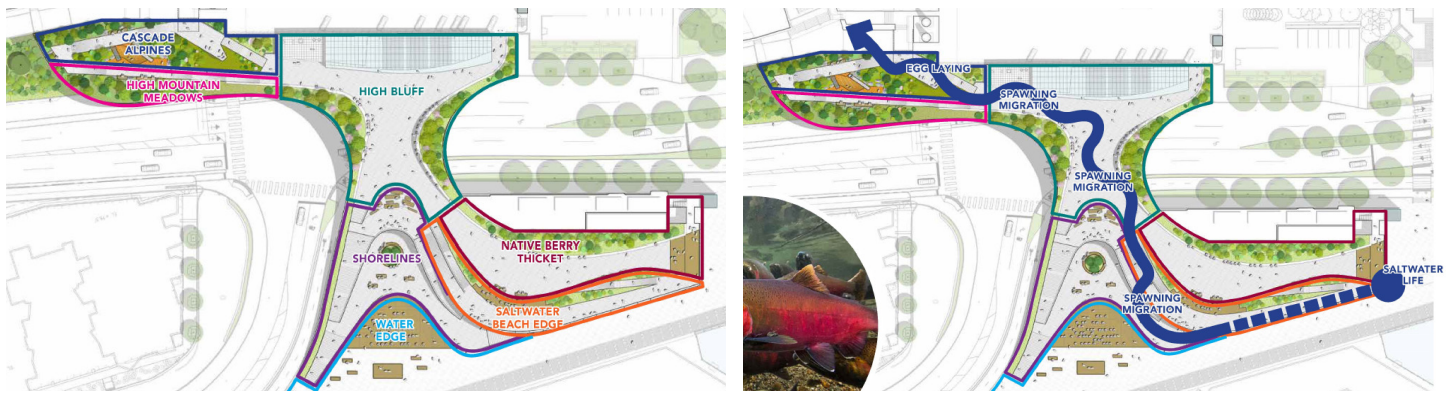
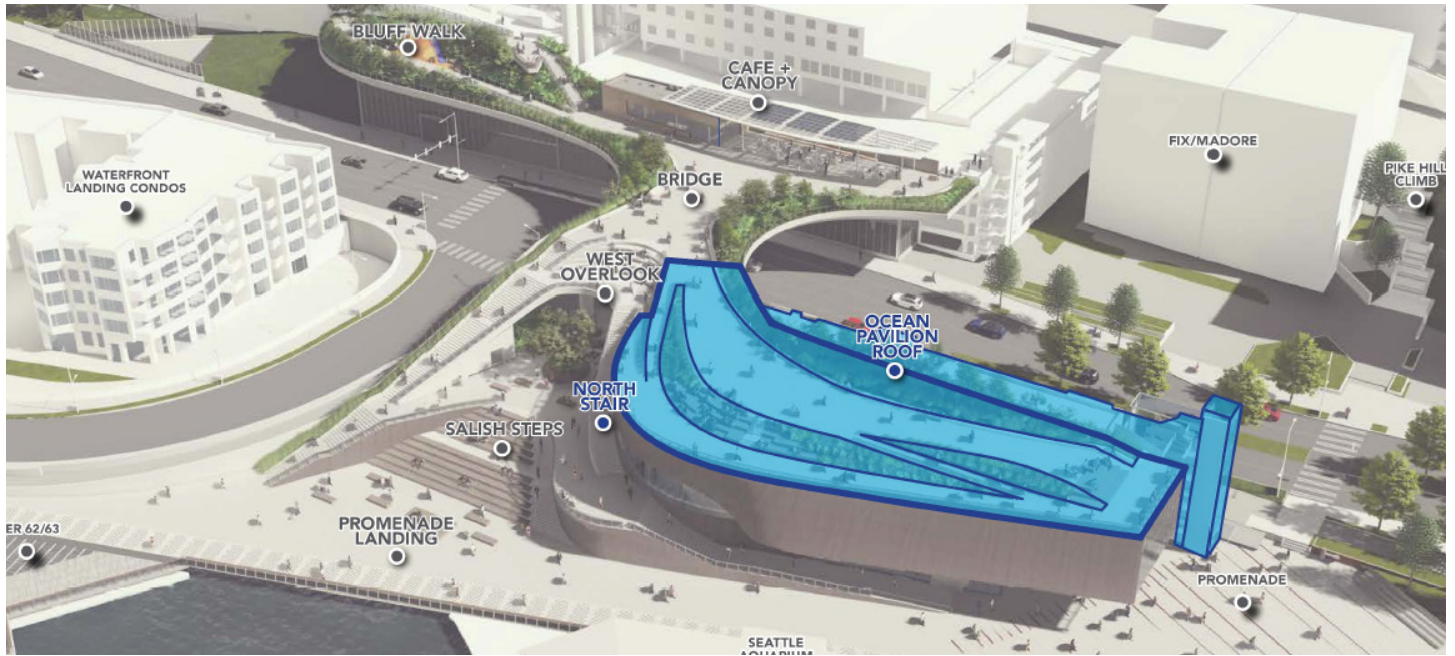


Figure 2: Proposed environmental and planting design concept of the Ocean Pavilion & Overlook Walk



WEST FACADE DETAILS

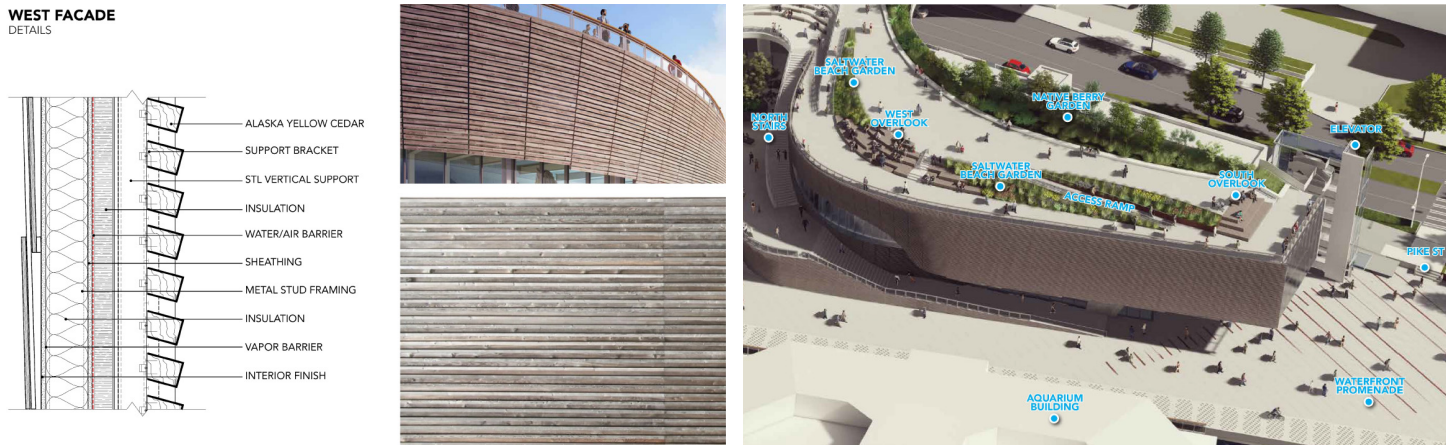


Figure 3: Location of Ocean Pavilion roof & open space (above), design concept for open space (bottom right), and proposed wood material (bottom left)

The Ocean Pavilion plaza located adjacent to the main entrance on the street level will include paving materials and patterns that are currently used on the Waterfront promenade. The western façade of the Ocean Pavilion building will include a series of horizontal Alaskan yellow cedar timber cladding attached to the outer framework of the building (see figure 3). Public art will be integrated within specific areas of the Ocean Pavilion. Additional public art will be integrated into the Overlook Walk project. The Ocean Pavilion project includes art integration on the ceiling overhanging the public plaza as well as portions of the interior ceiling located adjacent to the public plaza.

Agency Comments

None

Public Comments

None

Summary of Discussion

The Commission organized its discussion around the following issues:

- Final details of Roof & Open Space
- Final details of Ocean Pavilion Building
- Sustainability Strategy
- Outreach & Equity

Final details of roof & open space

The SDC commended the project team for their continued development of the Ocean Pavilion Roof and open space areas. Commissioners acknowledged the importance of providing accessible open space and encouraged the team to think about how the space can accommodate programming opportunities such as outdoor gatherings, educational events, and catered events. The Commission then recommended the project team continue to think about how the open space can be successful in functioning independently while also relating to other public spaces along the Waterfront. Commissioners also recognized the complexity of scales and design of each open space area and encouraged the team to explain how each space will function as a system as well as independently from each other. Commissioners then recommended the project team continue to integrate the Ocean Pavilion and Overlook Walk so that they appear as one entity for end users.

The SDC commended the project team for their specification of materials and planting palette throughout the design. The Commission felt that the planting, hardscape materials, and art will provide an inviting experience and will allow the open space to serve as an important gathering space for the public. Commissioners appreciated the vision to provide a series of plant environments ranging from upland to coastline plants throughout the project and thought it would provide a positive experience for users but recommended the project team to continue to think about how the varied plantings will grow and mature in a small urban space. Commissioners also appreciated the specification of wood throughout the public spaces.

The SDC then encouraged the project team to consider integrating detailed design elements within materials, such as the railing, and to integrate those design elements with programming through the use of wayfinding, technology, and docents to create an interactive experience for users, but cautioned the project team for relying too heavily on signage for wayfinding or to present other information.

The SDC continued to express their concern with the limited accessibility between the Ocean Pavilion building and the North Stair on the Overlook Walk. The Commission strongly encouraged the project team to continue to think about how to increase connectivity to the northside of the project site.

Final details of Ocean Pavilion Building

The SDC commended the project team for their specification of wood materials on the western façade of the Ocean Pavilion Building. Specifically, commissioners appreciated the thought given to long term maintenance as well as how the specified material will age over the lifetime of the building. The commission also recognized that the wooden material represents the native environment of the surrounding region. The Commission then questioned the materiality of the eastern façade of the Ocean Pavilion Building. Commissioners stated that the specified metal material felt out of place and that other materials with mineral elements would feel more appropriate. The Commission then recommended the project team consider using a different material along the eastern façade of the facility.

Sustainability Strategy

The SDC commended the project team for their sustainability strategy. Commissioners recognized the project team's approach as going beyond what other projects have done.

Outreach & Equity

The SDC commended the project team for their inclusion of and involvement with Indigenous Communities. The Commission strongly recommended this partnership and associated collaboration efforts continue beyond the life of the project. The SDC also recommended the project team engage with Native youth as the project continues to develop. Commissioners then expressed their appreciation that outreach for the project had extended beyond the baseline to involve a diverse group of communities and organizations. The SDC recognized that this project will serve as a positive example of effective outreach and community engagement for other Waterfront projects. The Commission encouraged the project team to use this experience as a way to educate other teams planning and developing cultural facilities. Commissioners also encouraged the project team to provide an update on cultural elements within the project design.

The SDC then commended the project team on their approach for art integration. Commissioners also appreciated the creation of an artist roster that will serve as an opportunity for ongoing engagement. The Commission recommended the project team keep an artist roster in perpetuity and allow it to expand over time to ensure that it is an ongoing resource for future programming and interpretation opportunities along the Waterfront

Action

The SDC thanked the project team for its presentation of the design development phase for the Ocean Pavilion project. The Commission appreciated the continued development of the overall design as well as the integrated concept of the Ocean Pavilion with the Overlook Walk project, the creation of integrated environmental planting zones from the rooftop of the Ocean Pavilion to the waterfront, and the integration of sustainability measures. The SDC commended the team for its partnership with Indigenous Tribes to shape the overall vision, which was then implemented throughout the design proposal to create a lasting story. The SDC voted, 7-0, to approve the design development phase of the Ocean Pavilion project with the following recommendations:

1. Continue to think about how varied plant palettes will perform in such small urban spaces
2. Balance creating a unique space while also integrating with other waterfront spaces. It must serve as a place in and of itself but also as a part in a network of spaces.
3. Continue to integrate the Ocean Pavilion and Overlook Walk so that they appear as one entity for end users
4. Continue to embed the vision in wayfinding and interpretation subtly but explore more ways to express it in materials such as the handrail along the roof.
5. Consider changing the materials on eastern façade to be less commercial in appearance and application
6. Please keep the Indigenous artist roster that you are developing in perpetuity and allow it to expand over time. We appreciate that you are sharing it so that it can be an ongoing resource for future programming and interpretation opportunities along the Waterfront.
7. Continue the partnerships you are building with local tribes and Indigenous artists past construction and initial programming into the future.
8. Continue to pursue opportunities for sourcing materials, including plants, from Native owned firms.
9. Continue to engage with Native youth.
10. Continue to develop a strategy for infrastructure for food preparation facilities to support outdoor gatherings.
11. Continue to find ways to increase universal accessibility. Think about increasing access/improve experience between north and south side of project. Consider providing back and arm rests on seating features.