

South Recycling Center

Seattle Design Commission –
Design Development Level
October 3, 2019



Agenda

1. Confirmation of Project Vision
2. RSJ/Community Outreach Activities
3. Confirmation of Project Elements and Spaces
4. Site Furnishings and Lighting
5. Architectural Materials, Colors, and Finishes
6. Refinements to Landscape Architecture
7. Art Integration
8. Update to Sustainability Approach
9. Next Steps and Project Schedule



Project Vision

- Existing SRDS facilities are past useful life
- Current South Transfer Station was not planned to accommodate all solid waste needs. SRC is required for additional solid waste facilities
- Redevelopment of SRC helps meet the City's recycling goal of 70% by 2022
- Landfill closure is required by Dept. of Ecology



Racial Equity Toolkit and SPU

- **Utility-wide:**
 - Tools are embedded into the Capital Improvement Program
 - RSJ staff are “Core Team” project members
- **Project specific:**
 - Provide comparable services between north and south facilities
 - Met for a year with representative community stakeholder group
 - Focus on environmental benefits, access to free recycling and hazardous waste disposal, and operational efficiencies
 - Partnered with DON Community Liaisons to engage South Park’s Spanish- and Vietnamese-speaking communities and small businesses



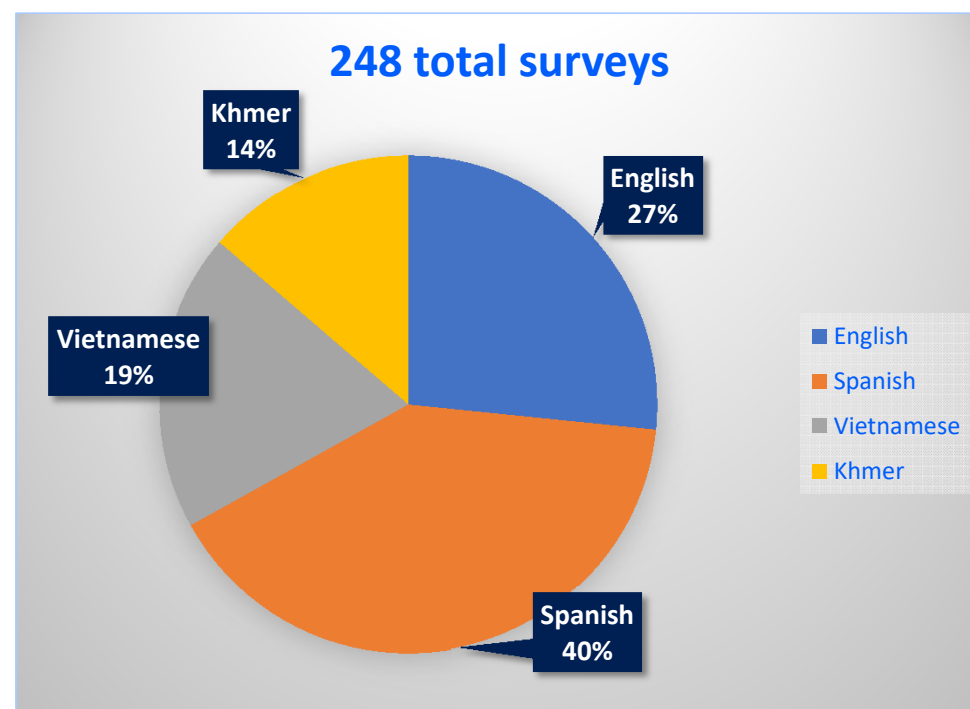
Community Engagement Activities

- Four meetings and ongoing project updates to project stakeholders
- Participation in community events to gain input on project elements
- Drop in sessions for residential and business neighbors
- Community outreach for public artwork conducted via Office of Arts & Culture
- Listserv updates, project website and translated project fact sheet



Community Liaison Outreach Results

- Inclusive planning process
 - Latino and Vietnamese communities
- 7+ community presentations, social media, door-to-door
- [STS 2 video](#), factsheets, surveys
- CL results: 248 surveys completed



Community Feedback

- 253 total surveys administered

Open Fencing	Screened Fencing
168	85

Green Trees All Year	Trees that Change Color
134	116



Reurbanización de la estación de reciclado y eliminación del sur
CUESTIONARIO
Invierno 2018

¡QUEREMOS SABER SU OPINIÓN!

Su opinión nos ayudará a diseñar un camino peatonal que contemple las preferencias de la comunidad de South Park.

OPCIONES DE CERCA

- ¿Prefiere una cerca que:
- permita que los peatones vean el sitio?
 - no permita que los peatones vean el sitio?



OPCIONES DE ÁRBOLES

Plantaremos diferentes tipos de árboles. ¿Le gustaría ver árboles que:

- se mantengan verdes todo el año?
- cambien de color según la temporada, pero se deshojen en invierno?



COMENTARIOS ADICIONALES

Que tengamos mejor seguridad y mas alumbrado en las calles

We want more security and lighting around the streets



Community Comment highlights

- Happy about the project
- Glad to be asked
- Site safety is a concern
- Trash and litter are a concern
- Signage and lighting please
- Ongoing engagement on services and job opportunities

COMENTARIOS ADICIONALES

No tenia idea de que habia un basureo
cerca de aqui.

¿Cuándo lo pusieron? ¿Que podemos tener
de beneficio los que vivimos cerca?

¿Podemos ir en bicicleta o a pie a
tirar nuestra basura?

I didn't know there was a recycle and disposal center nearby when was
it open? what do locals have as benefits? Can we bike or walk to dispose trash?

Dirección de correo electrónico para actualizaciones de proyectos

Idioma preferido Español

ADDITIONAL COMMENTS

Yay! Free Drop off!

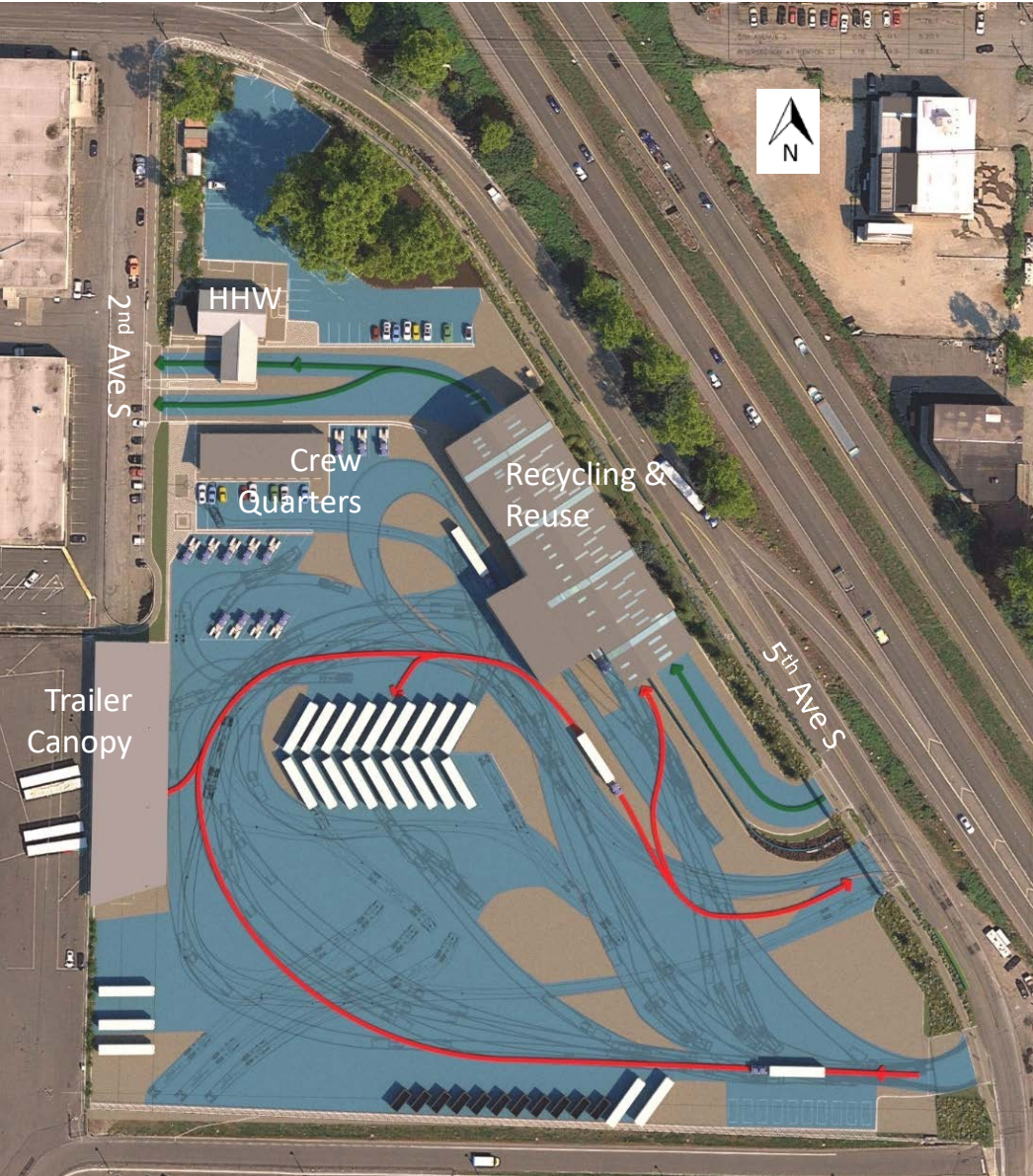
Project Element Updates

- Permit Progress
- Art Concept Advancement
- Landfill Closure Consent Decree



Site Circulation Near Term

- Public Vehicles ← (green arrow)
- Solid Waste Trucks ← (red arrow)
- General Vehicle Circulation Areas (blue grid)

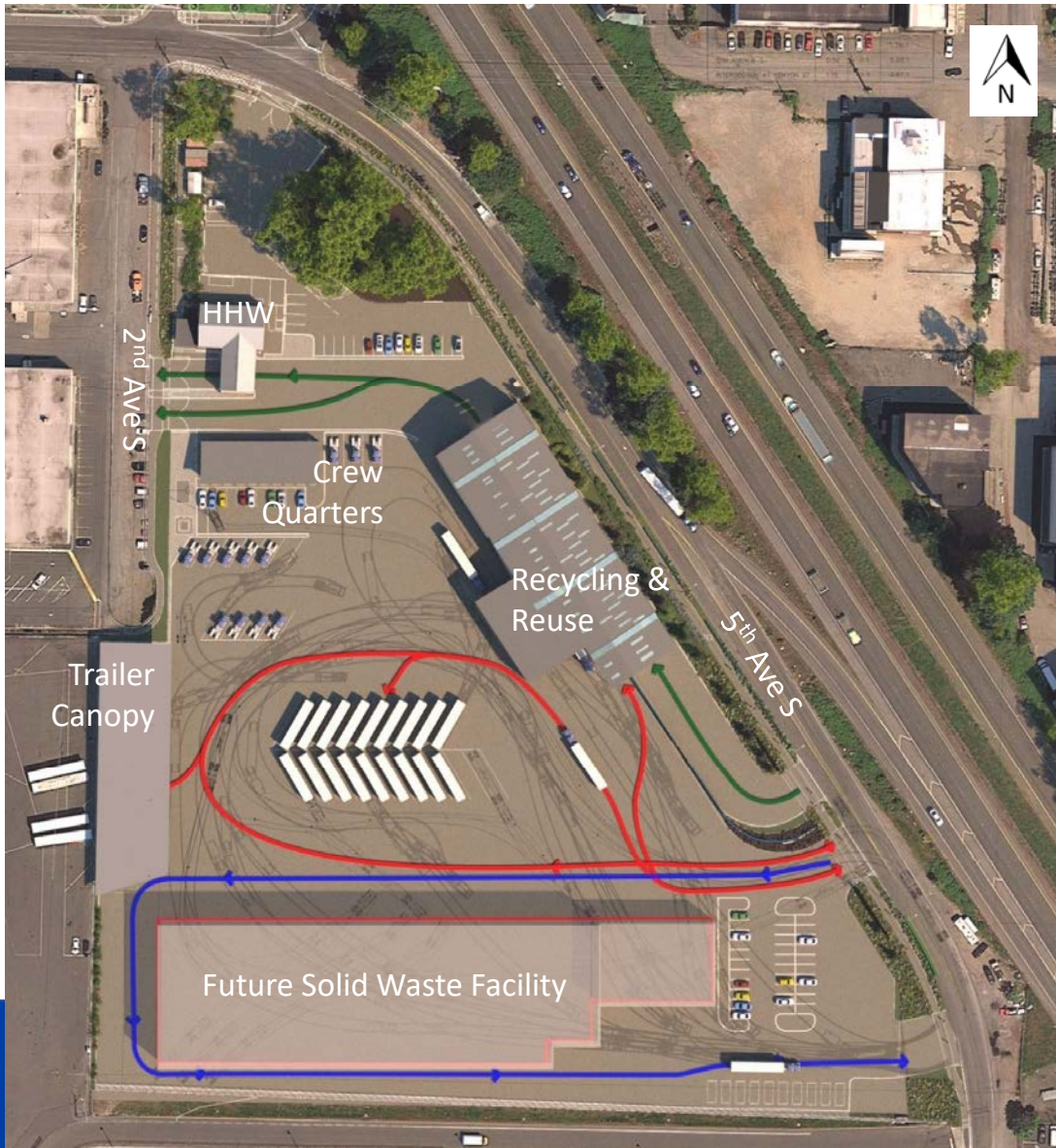


Site Circulation Long Term

Public Vehicles ←

SPU Solid Waste Trucks ←

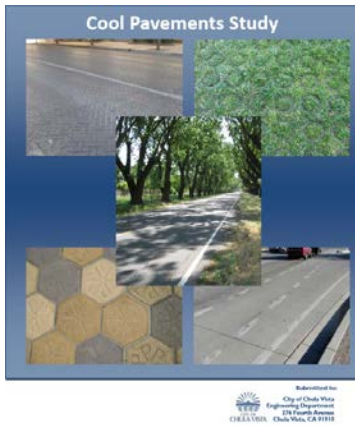
Future Solid Waste Facility Trucks ←





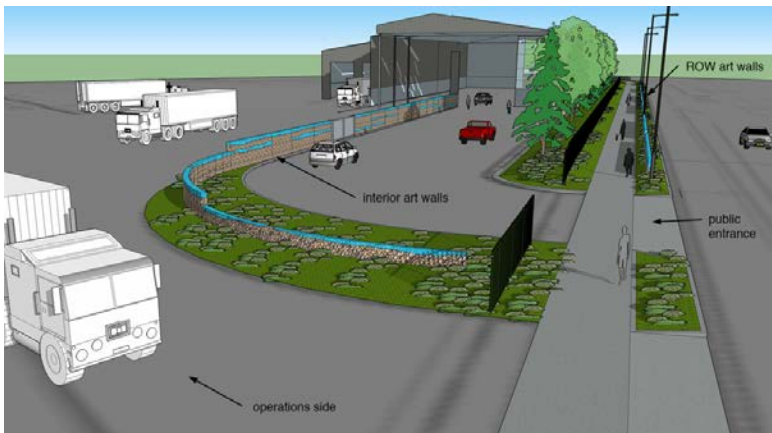
Pavement Alternatives Considered

- Alternative #1: Modified Asphalt Pavement
- Alternative #2: Colored Seal Coating on New Asphalt

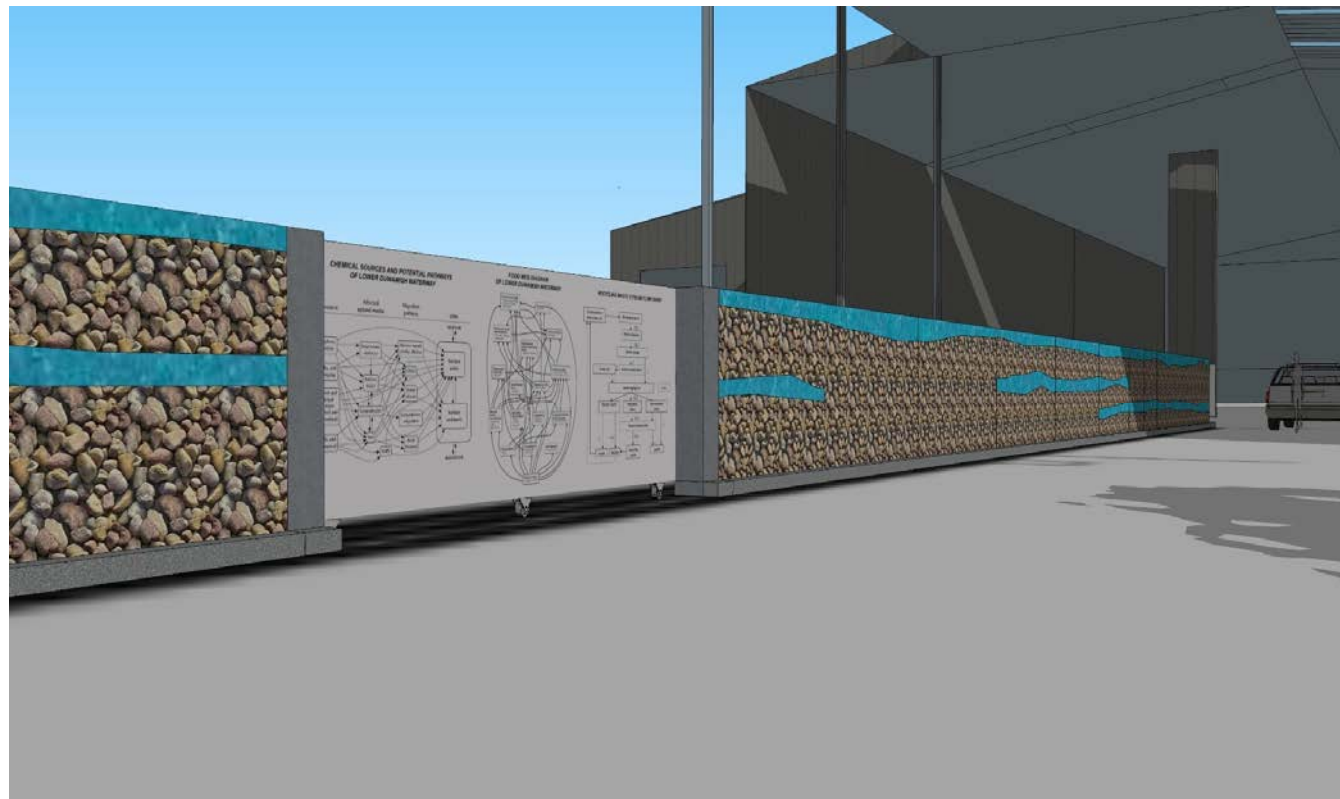
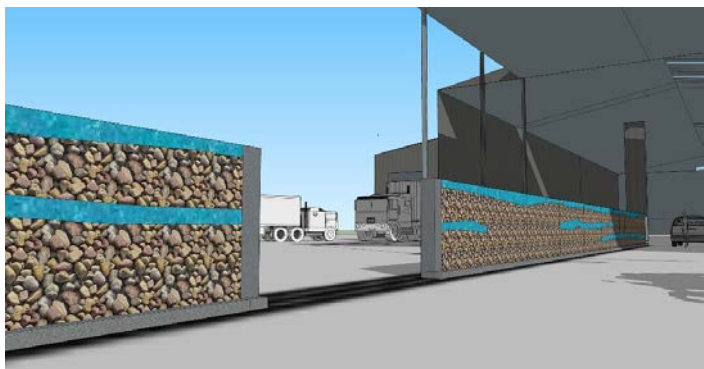


Art Integration

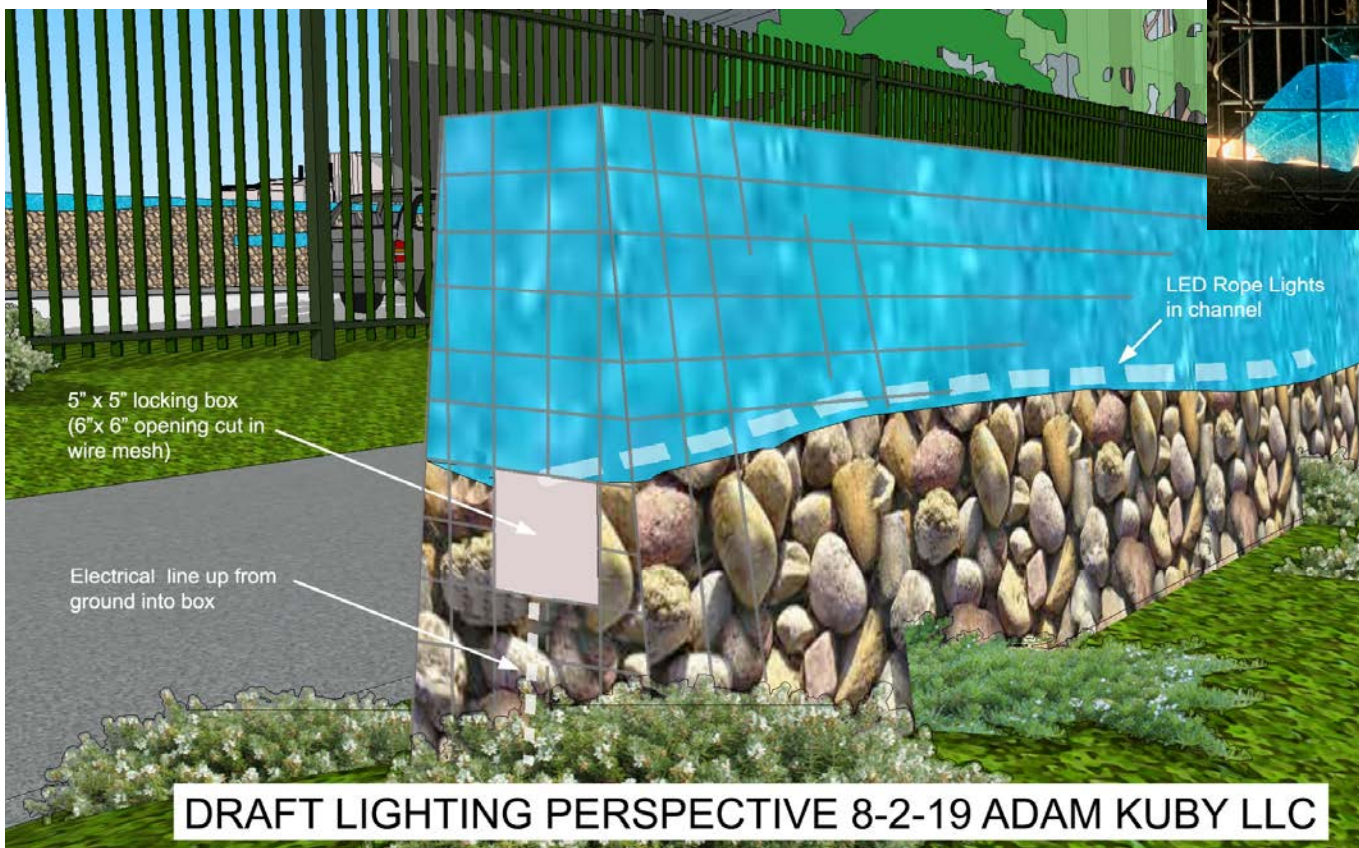
- ROW wall/public interaction
- Interior wall/public interaction
- Gate
- Lighting concept



Art Integration - Interior Gate



Art Integration - Lighting



Recycle & Reuse Building

INSPIRATION MATERIALS



Recycle & Reuse Building

INSPIRATION MATERIALS



South & East



Recycle & Reuse Building

INSPIRATION MATERIALS

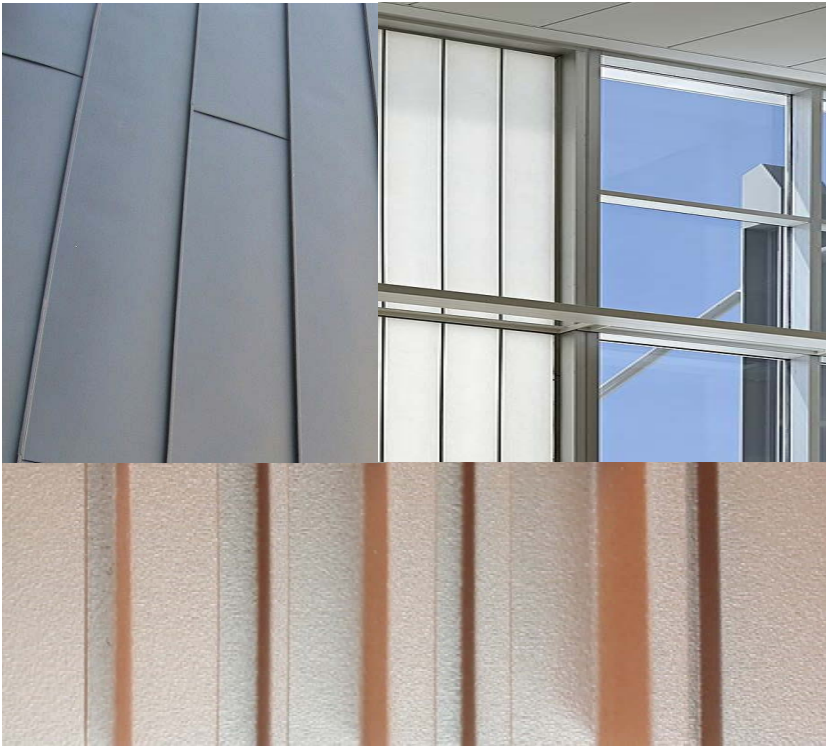


Night Lighting Concept



Crew Quarters Refinements

INSPIRATION MATERIALS



Crew Quarters Refinements

South Elevation



SCALE IN FEET
0 2 4 10 20



Landscape Approach

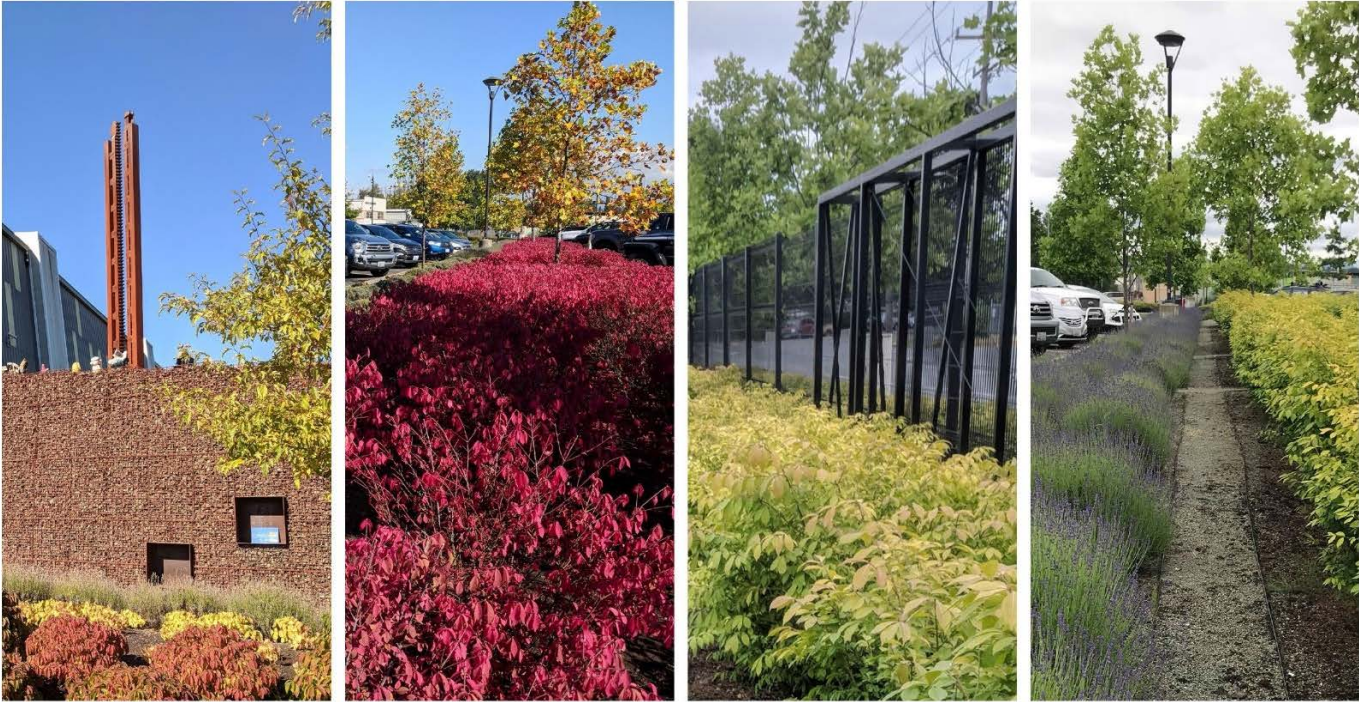
- Plants provide cohesive campus
- Limitations: Soil depth & Landfill cap
- Pedestrian path connecting missing link
- 13 trees to remain; 23 trees provided along 5th Avenue South
- Trees with phytoremediation qualities
- Irrigation added along 5th Avenue South



SITE PLANTING PLAN



Cohesive Campus - Photos from STS I



Cohesive Campus - Plant Palette



CORNUS SERICEA 'KELSEY' / 2.5' HT X 2.5' W
RED-OSIER DOGWOOD



LAVANDULA ANGUSTIFOLIA / 1.5' HT X 2' W
ENGLISH LAVENDER



TAXUS X MEDIA 'DENSIFORMIS' / 3' HT X 5' W
CREEPING YEW



PRUNUS LAUROCERUS 'MT. VERNON' / 1' HT X 3' W
MT VERNON LAUREL



POTENTILLA FRUTICOSA 'GOLD STAR' / 2' HT X 3' W
GOLD STAR POTENTILLA



ECO-LAWN SEED (SDOT SEED MIX #5)



SALIX PURPUREA 'CANYON BLUE' / 4' HT X 3' W
DWARF BLUE ARCTIC WILLOW



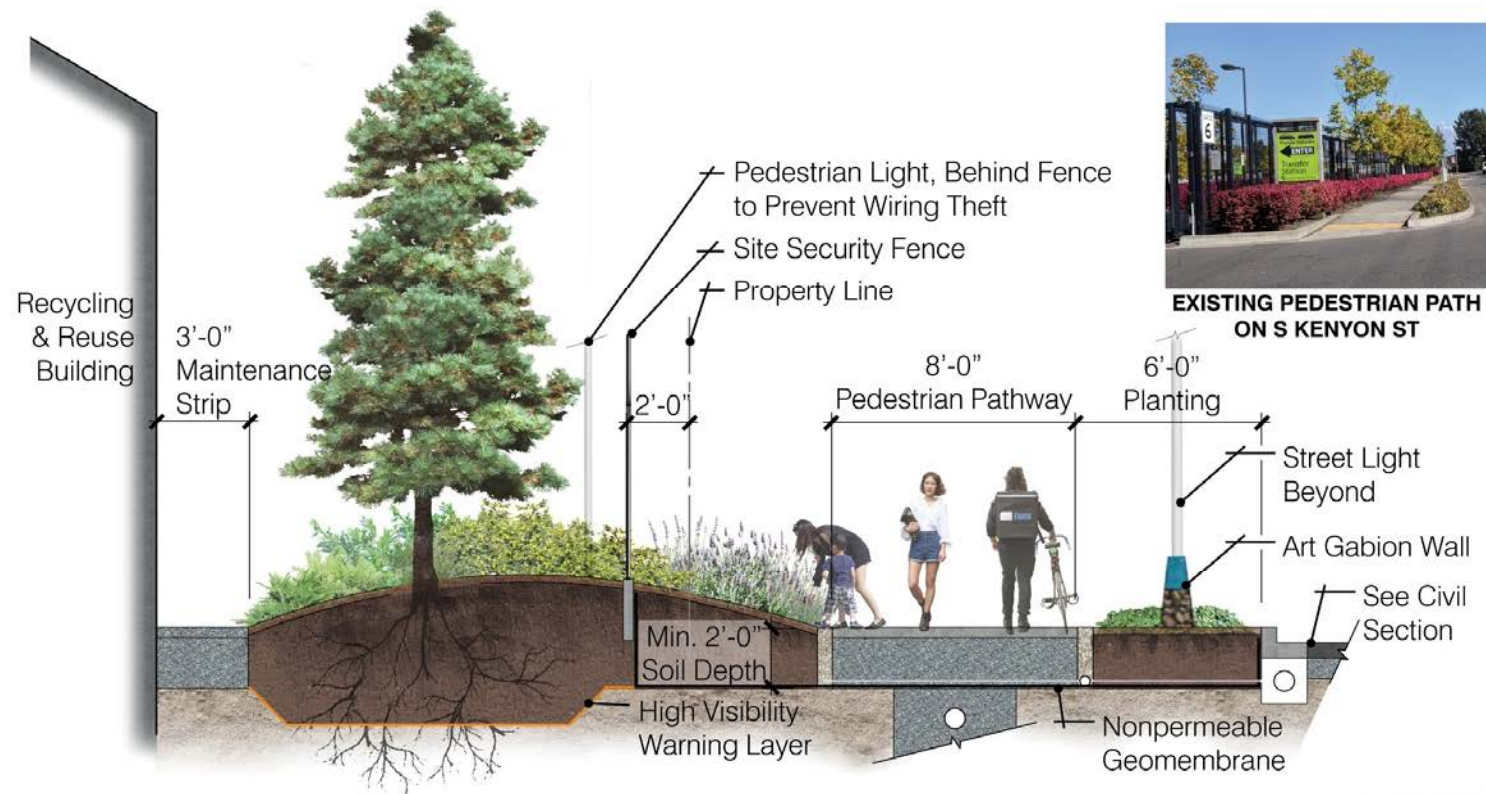
EUONYMUS ALATUS 'RUDY HAAG' / 4' HT X 4' W
RUDY HAAG BURNING BUSH



SENECIO GREYI / 4' HT X 6' W
DAISY BUSH



Landscape Section - 5th Ave S



EXISTING PEDESTRIAN PATH ON S KENYON ST

SECTION A-A' Pedestrian Pathway at Recycling & Reuse Building



5th Avenue South Landscape Elevations, B-B'

Trees along 5th Avenue South

- Can remediate chlorinated solvents
- Drought-tolerant when established
- Pest and disease resistant
- Roots tolerant of restrictive soil volumes
- Tolerant of air pollutants
- Mix of species increases resilience
- Community preferred majority evergreen



ELEVATION Summer



ELEVATION Autumn



ELEVATION Winter

Update to Project Sustainability Approach

- Sustainable objectives are set to meet the City of Seattle goals: *Capital GREEN*
- *Examples include:*
 1. Use of recycled content materials (i.e. recycled asphalt)
 2. Vehicle charging stations and provisions for future truck charging
 3. Structures are solar ready
 4. Innovative approach for tree mitigation due to restriction of project (landfill) site



Project Schedule



THANK YOU.

