

South Recycling Center

Seattle Design Commission – Schematic Level
May 2, 2019

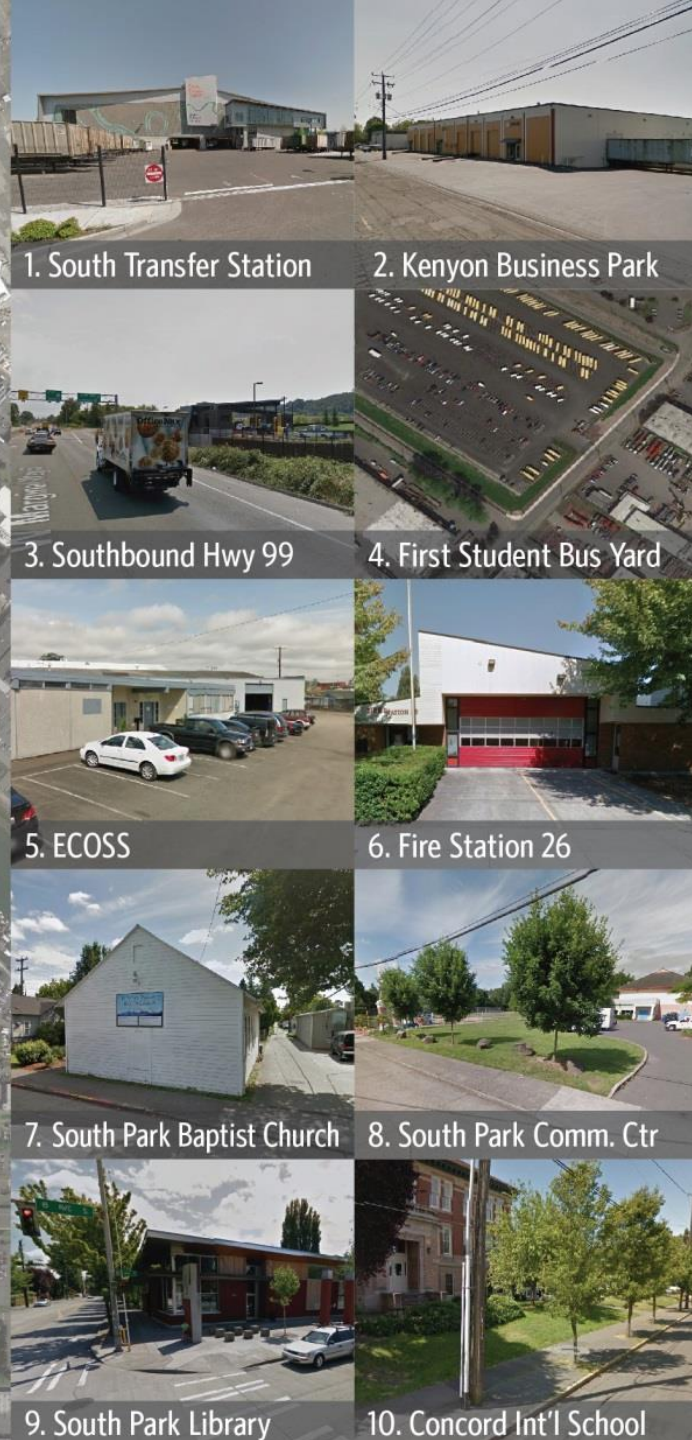
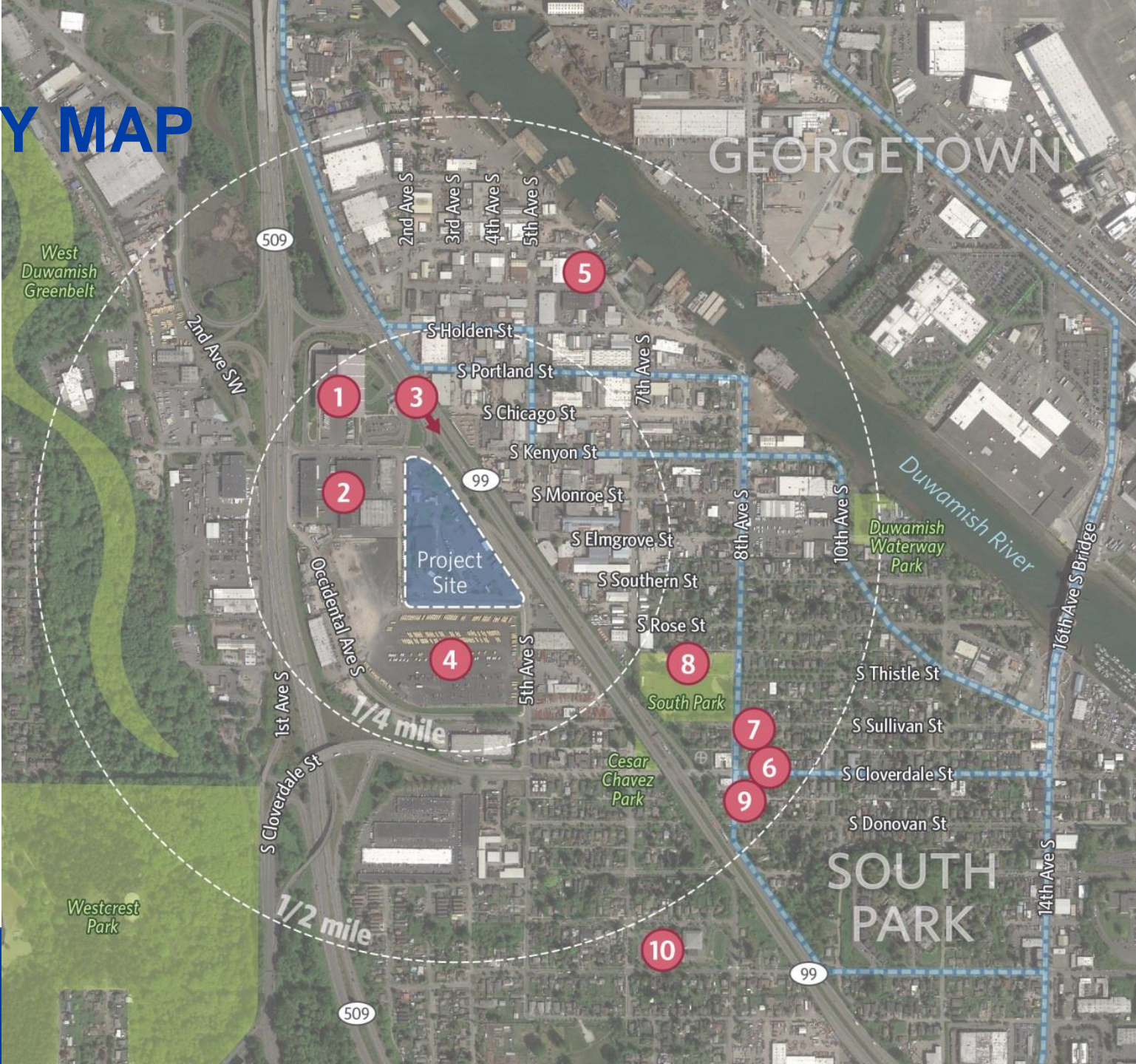


Agenda

1. Project Integration with Urban Fabric
2. RSJ/Community Outreach Activities
3. Updated Site Plan
4. Art Integration
5. Refinements to Landscape Architecture
6. Refinements to R&R Building
7. Refinements to Crew Quarters
8. Update to Sustainability Approach
9. Next Steps and Project Schedule



VICINITY MAP



Racial Equity Toolkit and SPU

- **Utility-wide:**
 - Tools are embedded into the Capital Improvement Program
 - RSJ staff are “Core Team” project members
- **Project specific:**
 - Provide comparable services between north and south facilities
 - Met for a year with representative community stakeholder group
 - Focus on environmental benefits, access to free recycling and hazardous waste disposal, and operational efficiencies
 - Partnered with DON Community Liaisons to engage South Park’s Spanish- and Vietnamese-speaking communities and small businesses



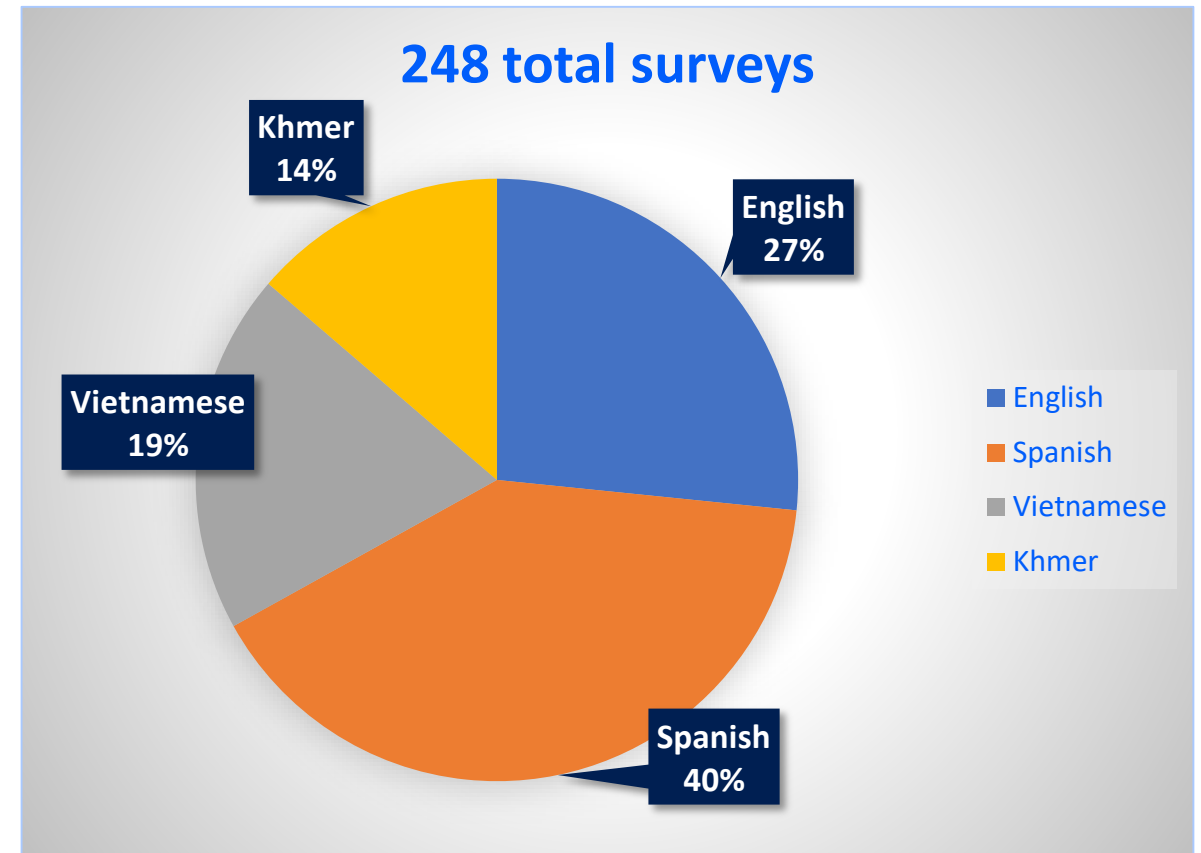
Community Engagement Activities

- Four meetings and ongoing project updates to project stakeholders
- Participation in community events to gain input on project elements
- Drop in sessions for residential and business neighbors
- Community outreach for public artwork conducted via Office of Arts & Culture
- Listserv updates, project website and translated project fact sheet



Community Liaison Outreach Results

- Inclusive planning process
 - Latino and Vietnamese communities
- 7+ community presentations, social media, door-to-door
- [STS 2 video](#), factsheets, surveys
- CL results: 248 surveys completed



Community Feedback

- 253 total surveys administered

Open Fencing	Screened Fencing
168	85

Green Trees All Year	Trees that Change Color
134	116



Reurbanización de la estación de reciclado y eliminación del sur
CUESTIONARIO
Invierno 2018

¡QUEREMOS SABER SU OPINIÓN!

Su opinión nos ayudará a diseñar un camino peatonal que contemple las preferencias de la comunidad de South Park.

OPCIONES DE CERCA

¿Prefiere una cerca que:

- permita que los peatones vean el sitio?
- no permita que los peatones vean el sitio?



OPCIONES DE ÁRBOLES

Plantaremos diferentes tipos de árboles. ¿Le gustaría ver árboles que:

- se mantengan verdes todo el año?
- cambien de color según la temporada, pero se deshojen en invierno?



COMENTARIOS ADICIONALES

Que tengamos mejor seguridad y mas alumbrado en las calles

We want more security and lighting around the streets



Community Comment highlights

- Happy about the project
- Glad to be asked
- Site safety is a concern
- Trash and litter are a concern
- Signage and lighting please
- Ongoing engagement on services and job opportunities

COMENTARIOS ADICIONALES

No tenia idea de que habia un basureno
cerca de aqui.

¿Cuándo lo pusieron? ¿Que podemos tener
de beneficio los que vivimos cerca?

¿Podemos ir en bicicleta o a pie a
tirar nuestra basura?

I didn't know there was a recycle and disposal center nearby when was
it open? what do locals have as benefits? Can we bike or walk to dispose trash?

Dirección de correo electrónico para actualizaciones de proyectos

Idioma preferido Español

ADDITIONAL COMMENTS

Yay! Free Drop off!

Solid Waste Facility Master Plan

- Final phase of 2007 Solid Waste Facilities Master Plan
- Current improvements and future solid waste facility support City's *Zero Waste Resolution 30990*; to recycle 70% of the waste produced within the City by 2025

FACILITY	YEAR
South Transfer Station	2013
North Transfer Station	2016
South Recycling Center	2022
Future Solid Waste Facility	TBD



Existing Conditions



Updated Site Plan

- Can accommodate 53' trailers
- Shifted truck wash south along R&R
- Widened trailer canopy
- Modified uncovered parking arrangement
- Advanced street improvements



Perspective

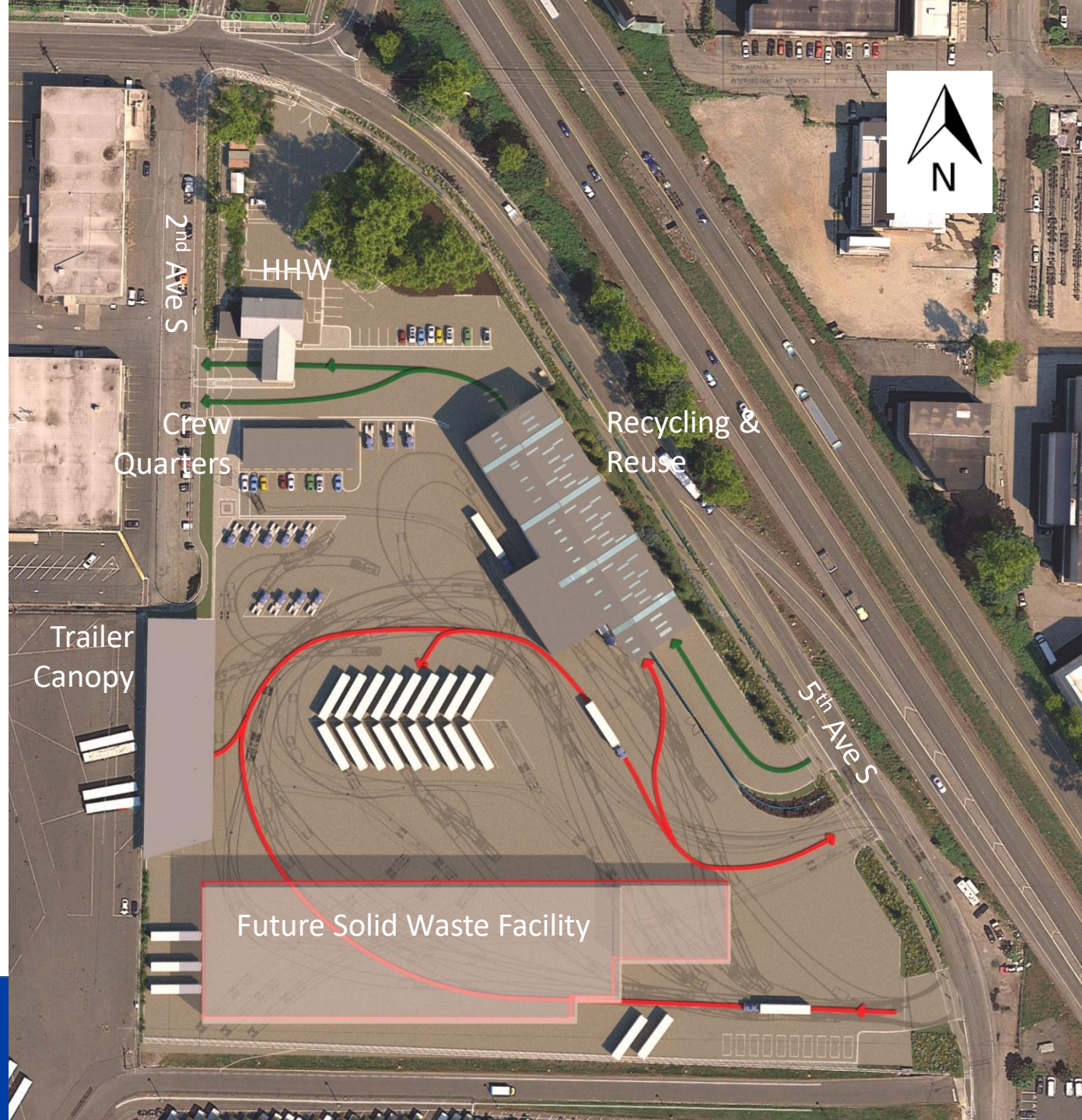


Site Circulation

Public Vehicles



Solid Waste Trucks



Transfer Station Functional Relationship

Customer
traffic



SPU truck
traffic



Customer
Entrance/Exit

SPU Solid
Waste Access

Recycling &
Reuse



Site Perimeter



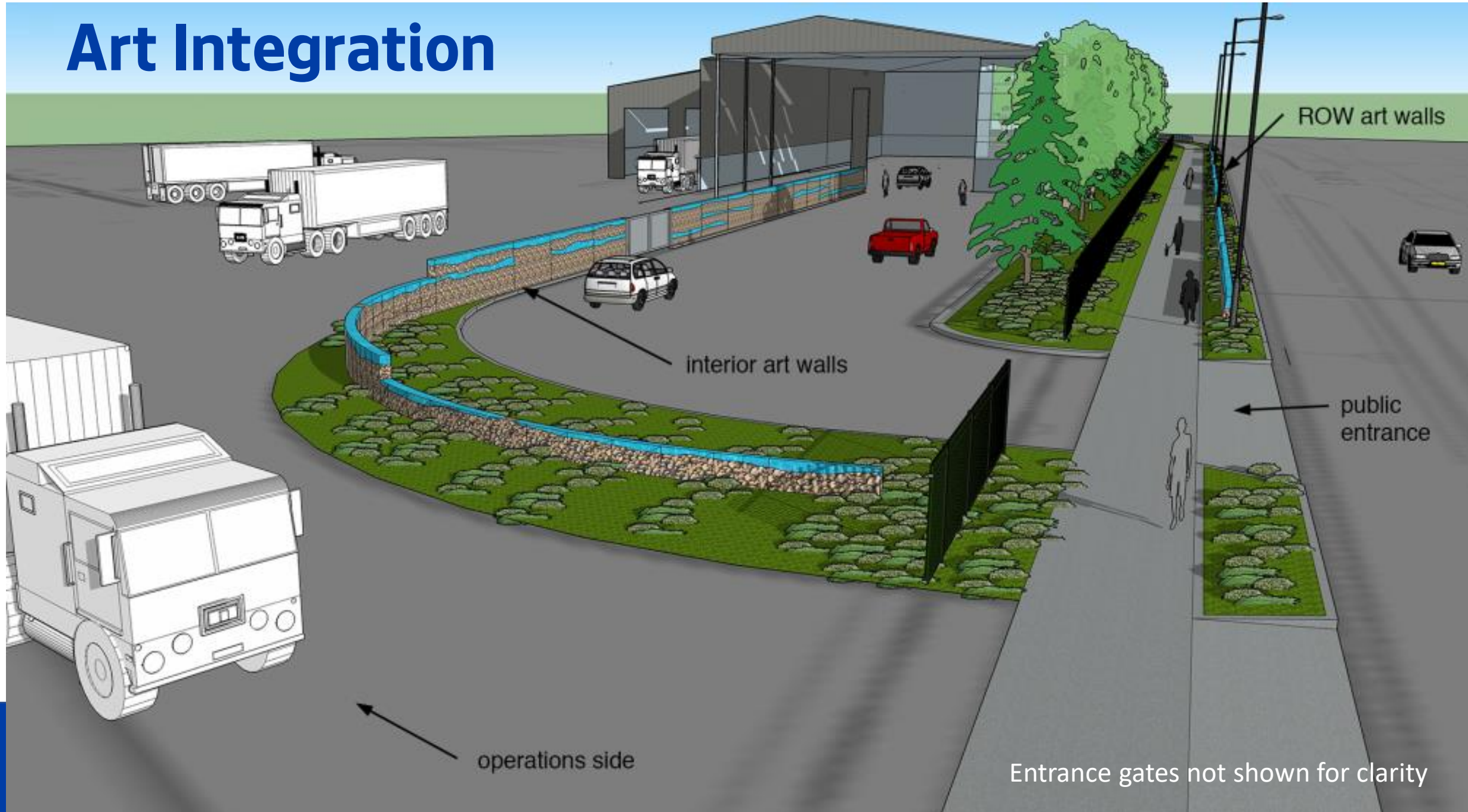
Existing



Art Integration



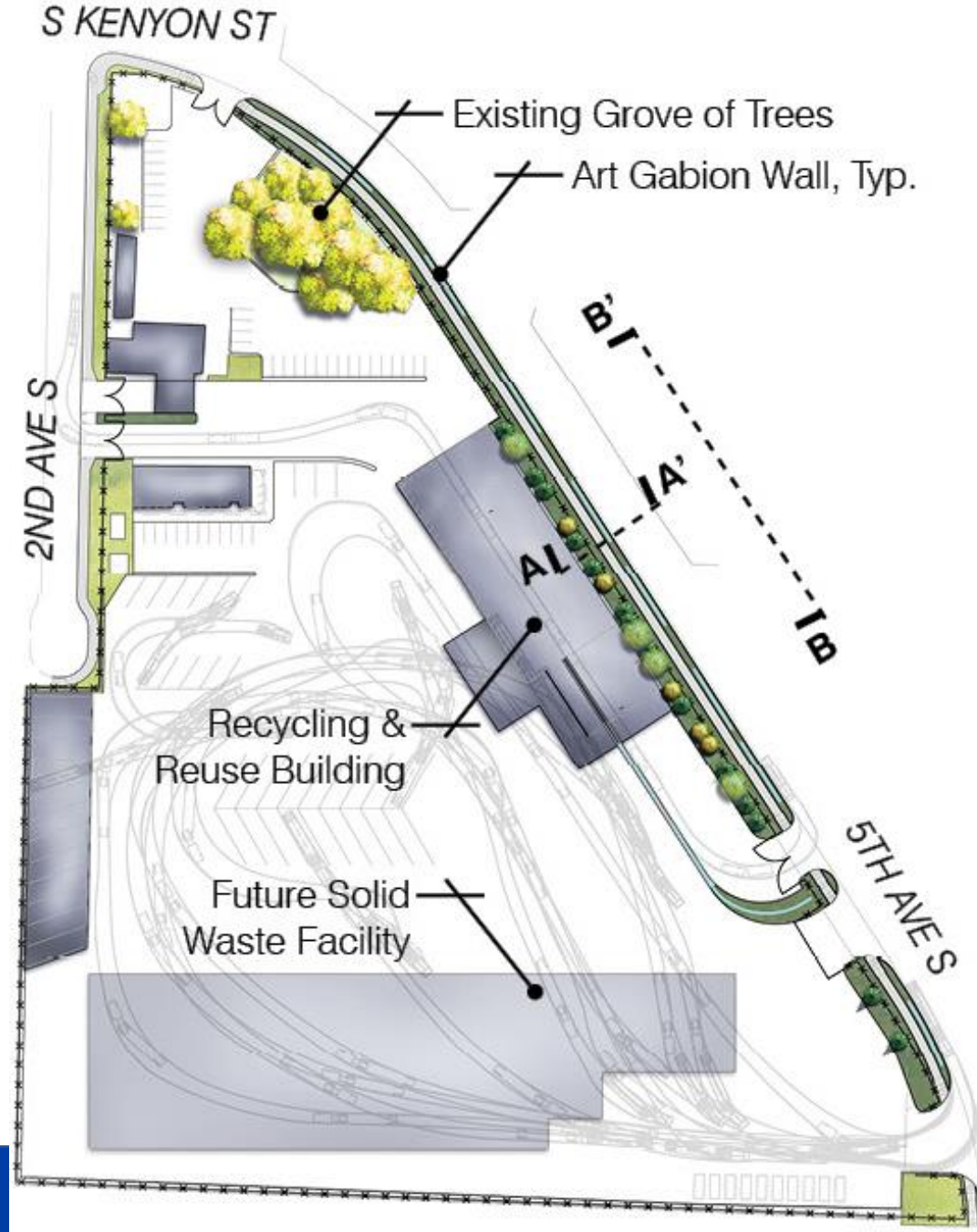
Art Integration



Entrance gates not shown for clarity

Landscape Approach

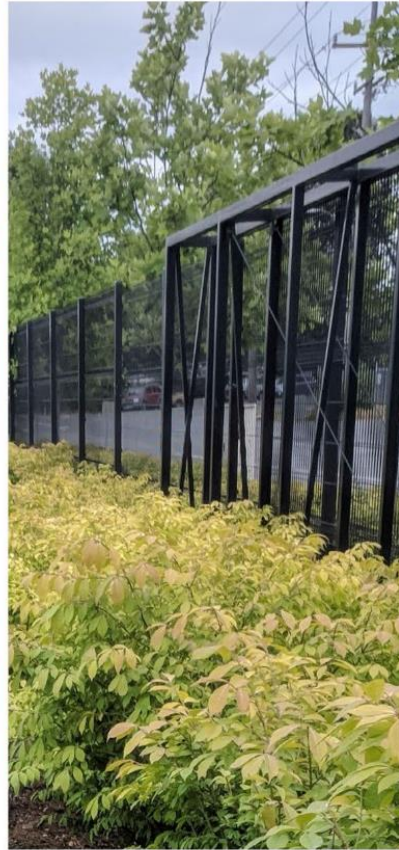
- Plants provide cohesive campus
- Limitations: Soil depth & Landfill cap
- Pedestrian path connecting missing link
- 13 trees to remain; 23 trees provided along 5th Avenue South
- Trees with phytoremediation qualities
- Irrigation added along 5th Avenue South



SITE PLANTING PLAN



Cohesive Campus - Photos from STS I



Cohesive Campus - Plant Palette



CORNUS SERICEA 'KELSEY' /
RED-OSIER DOGWOOD 2.5' HT X 2.5' W



LAVANDULA ANGUSTIFOLIA /
ENGLISH LAVENDER 1.5' HT X 2' W



TAXUS X MEDIA 'DENSIFORMIS' /
CREEPING YEW 3' HT X 5' W



PRUNUS LAUROCERSUS 'MT. VERNON' / 1' HT X 3' W
MT VERNON LAUREL



POTENTILLA FRUTICOSA 'GOLD STAR' / 2' HT X 3' W
GOLD STAR POTENTILLA



ECO-LAWN SEED (SDOT SEED MIX #5)



SALIX PURPUREA 'CANYON BLUE' / 4' HT X 3' W
DWARF BLUE ARCTIC WILLOW



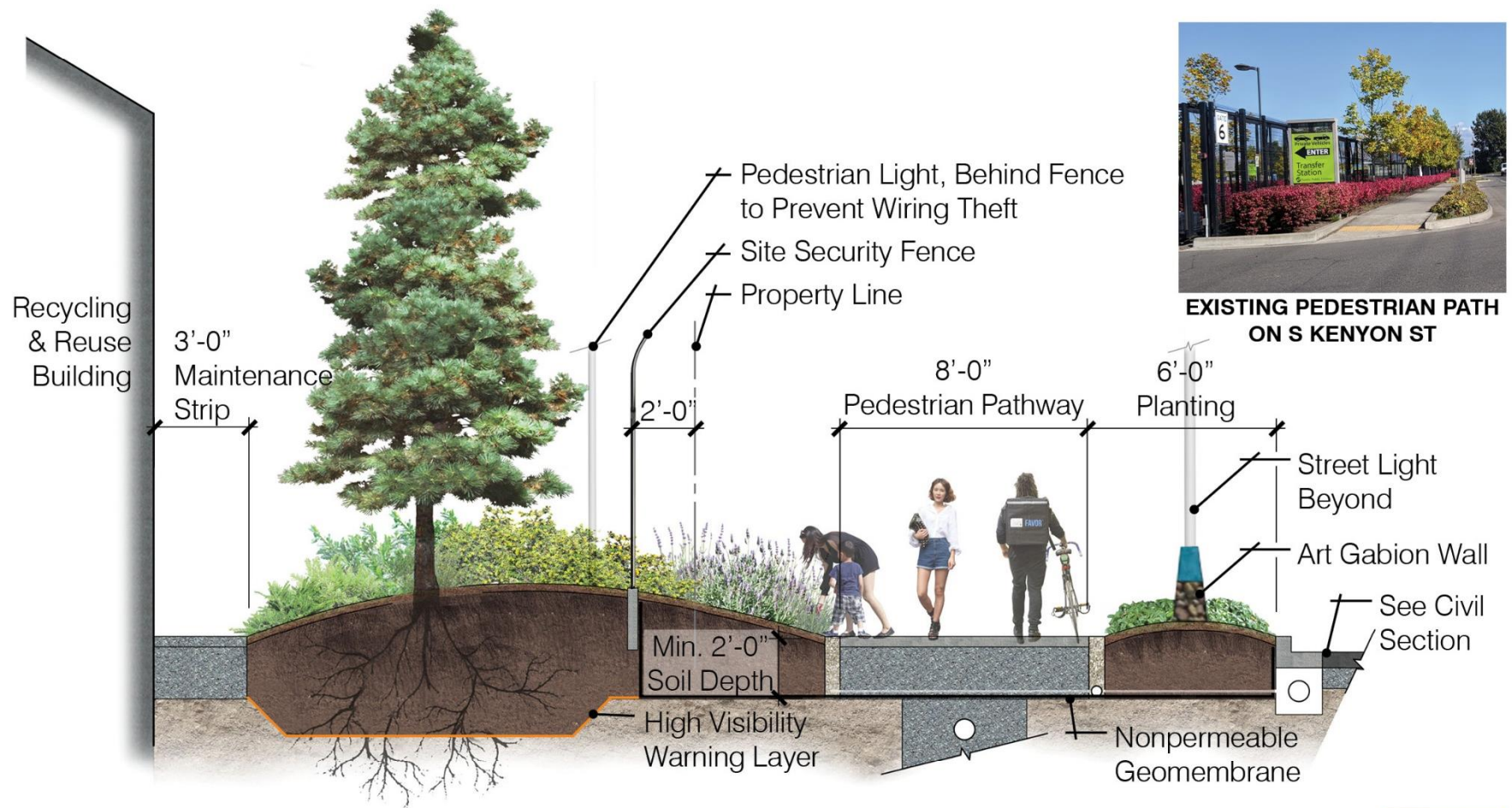
EUONYMUS ALATUS
BURNING BUSH 10' HT X 10' W



JUNCUS PATENS 'ELK BLUE' /
ELK BLUE RUSH 1.5' HT X 1.5' W



Landscape Section - 5th Ave S



SECTION A-A' Pedestrian Pathway at Recycling & Reuse Building



5th Avenue South Landscape Elevations, B-B'

Trees along 5th Avenue South

- Can remediate chlorinated solvents
- Drought-tolerant when established
- Pest and disease resistance
- Roots tolerate restrictive soil volumes
- Tolerate air pollutants
- Mix of species increases resilience
- Community preferred majority evergreen



ELEVATION Summer

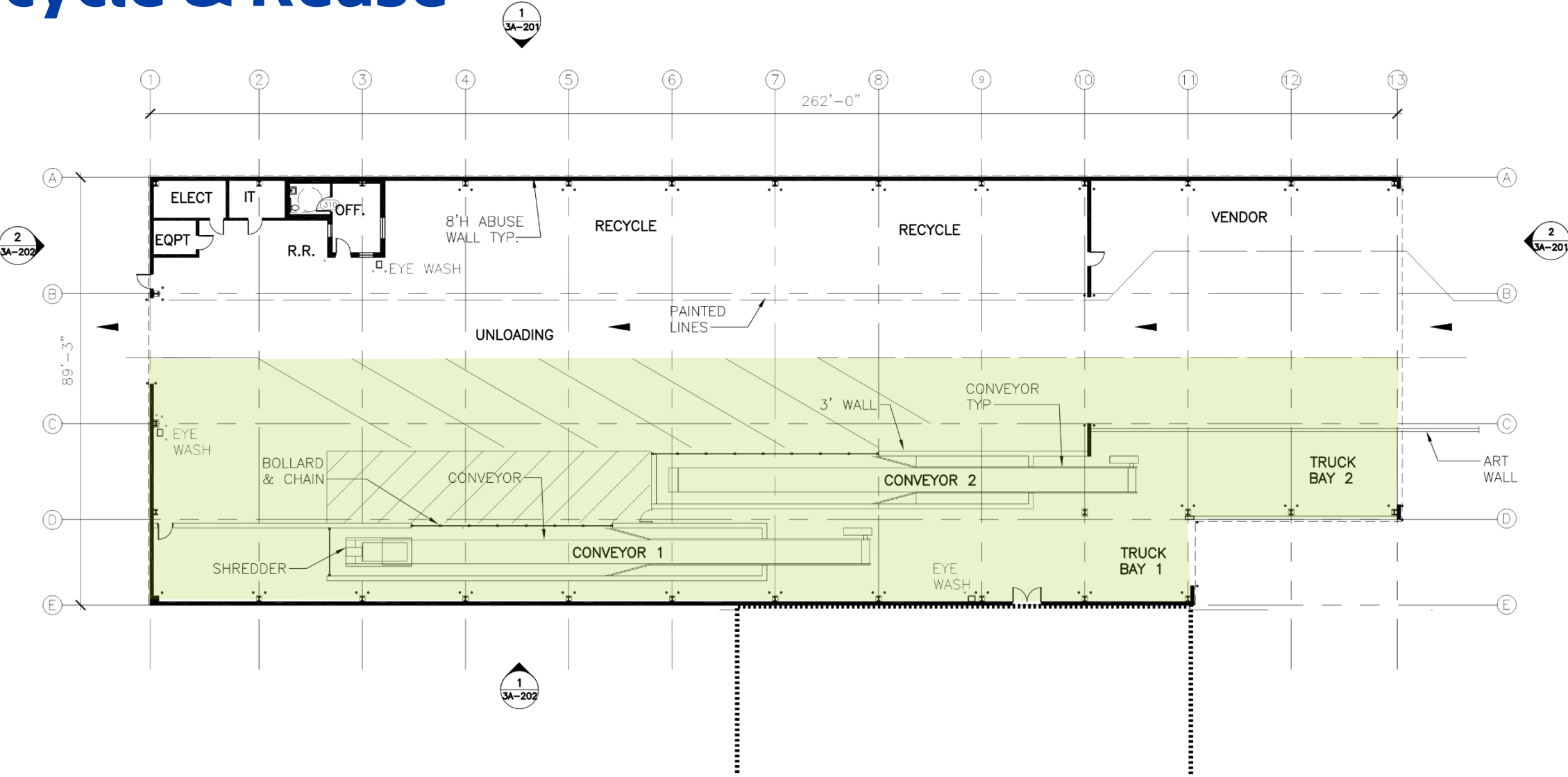


ELEVATION Autumn



ELEVATION Winter

Recycle & Reuse



Recycle & Reuse Building

INSPIRATION MATERIALS



North & East

Recycle & Reuse Building

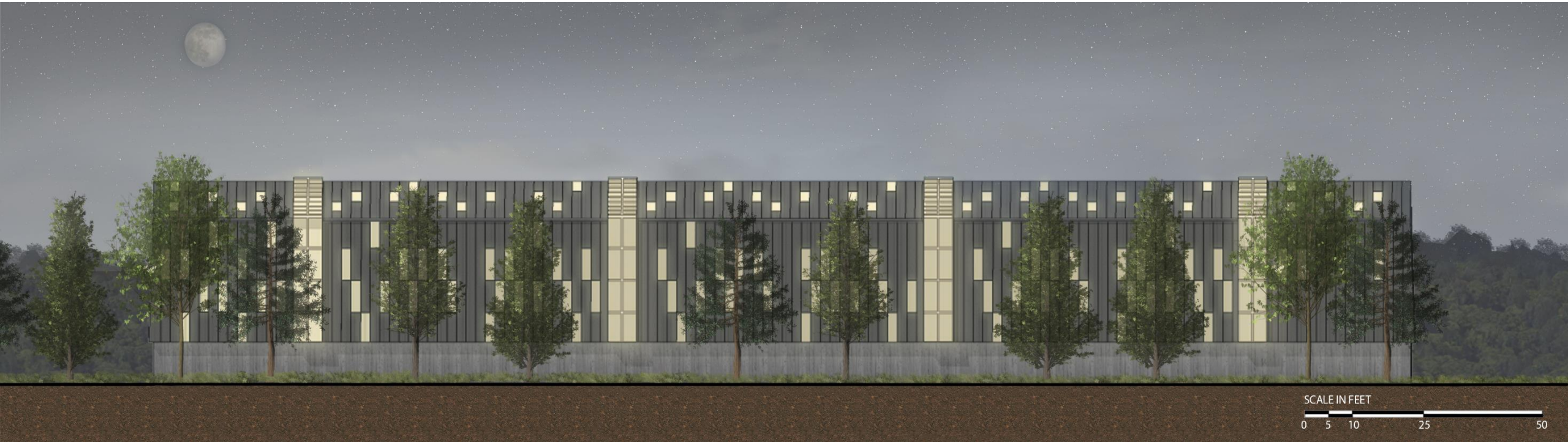
INSPIRATION MATERIALS



South & East



Night Lighting Concept



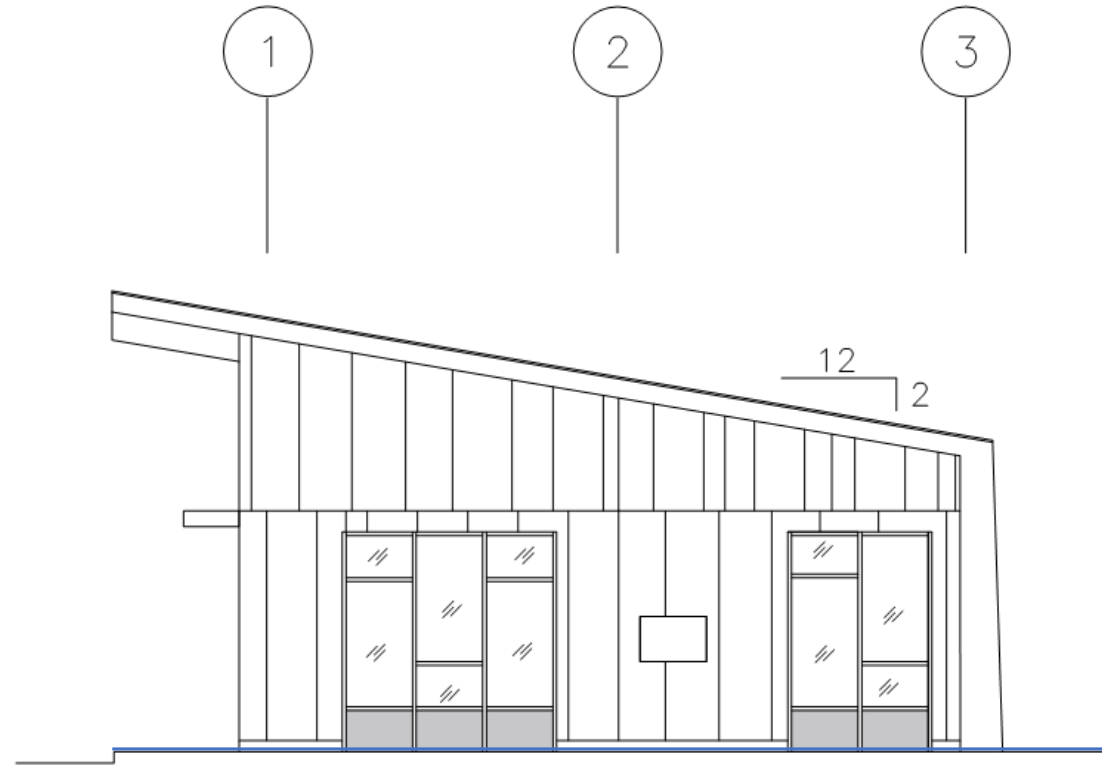
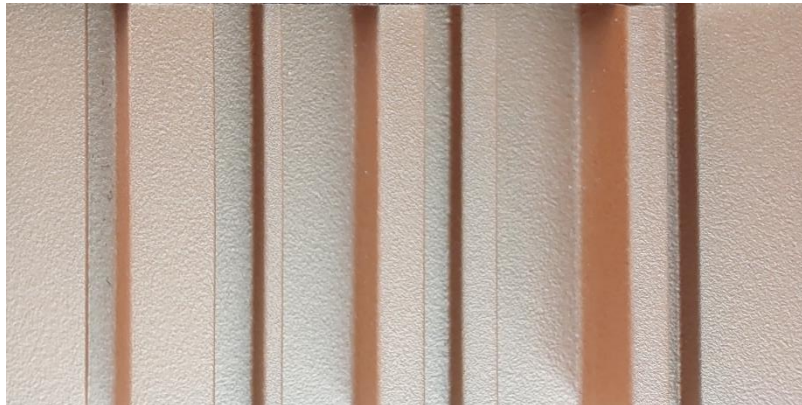
SCALE IN FEET
0 5 10 25 50

Crew Quarters



Crew Quarters Refinements

INSPIRATION MATERIALS



East Elevation

Crew Quarters Refinements

South Elevation



SCALE IN FEET
0 2 4 10 20

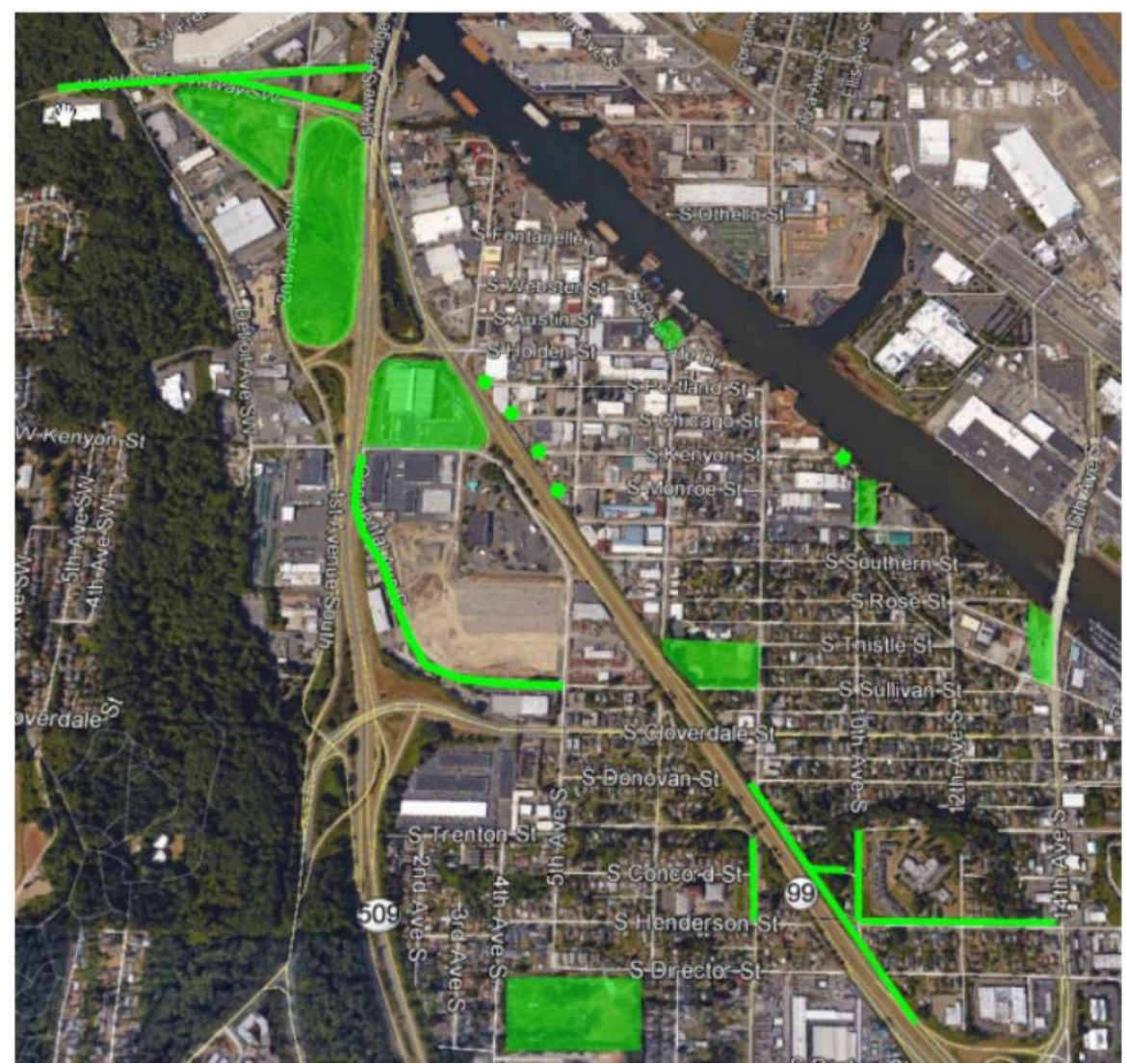
Update to Project Sustainability Approach

- Sustainable objectives are set to meet the City of Seattle goals: *Capital GREEN*
 1. Repurposing of closed landfill site
 2. Successful negotiation with Ecology for tree planting
 3. Reuse of demolition material
 4. Use of recycled content materials (i.e. recycled asphalt)
 5. Vehicle charging stations and provisions for future truck charging
 6. Reduction of site energy use beyond code
 7. Reduction of water use beyond code
 8. Reduction of off site light pollution
 9. Underground provisions to minimize disturbance to landfill for re-development
 10. Structures are solar ready



Sustainability Highlights

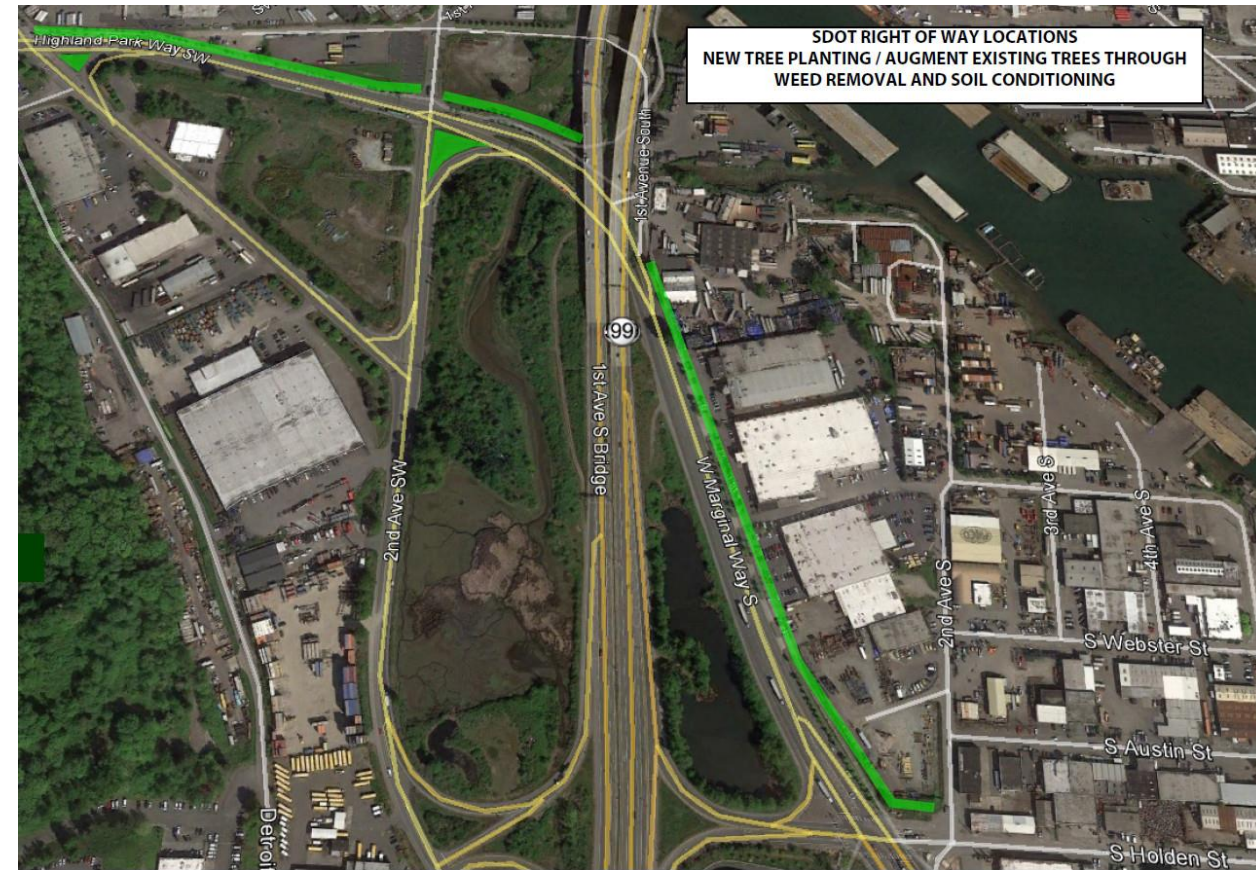
- Innovative approach for tree mitigation due to restriction of project (landfill) site:
 - Review requirements for tree replacement
 - Coordinate with Trees for Seattle and OSE on intent of tree replacement for unique project situation
 - Negotiate with Ecology and worked with community to preserve existing grove and approved new onsite tree planting



South Park Locations Reviewed for Feasibility of Tree Mitigation

Sustainability Highlights

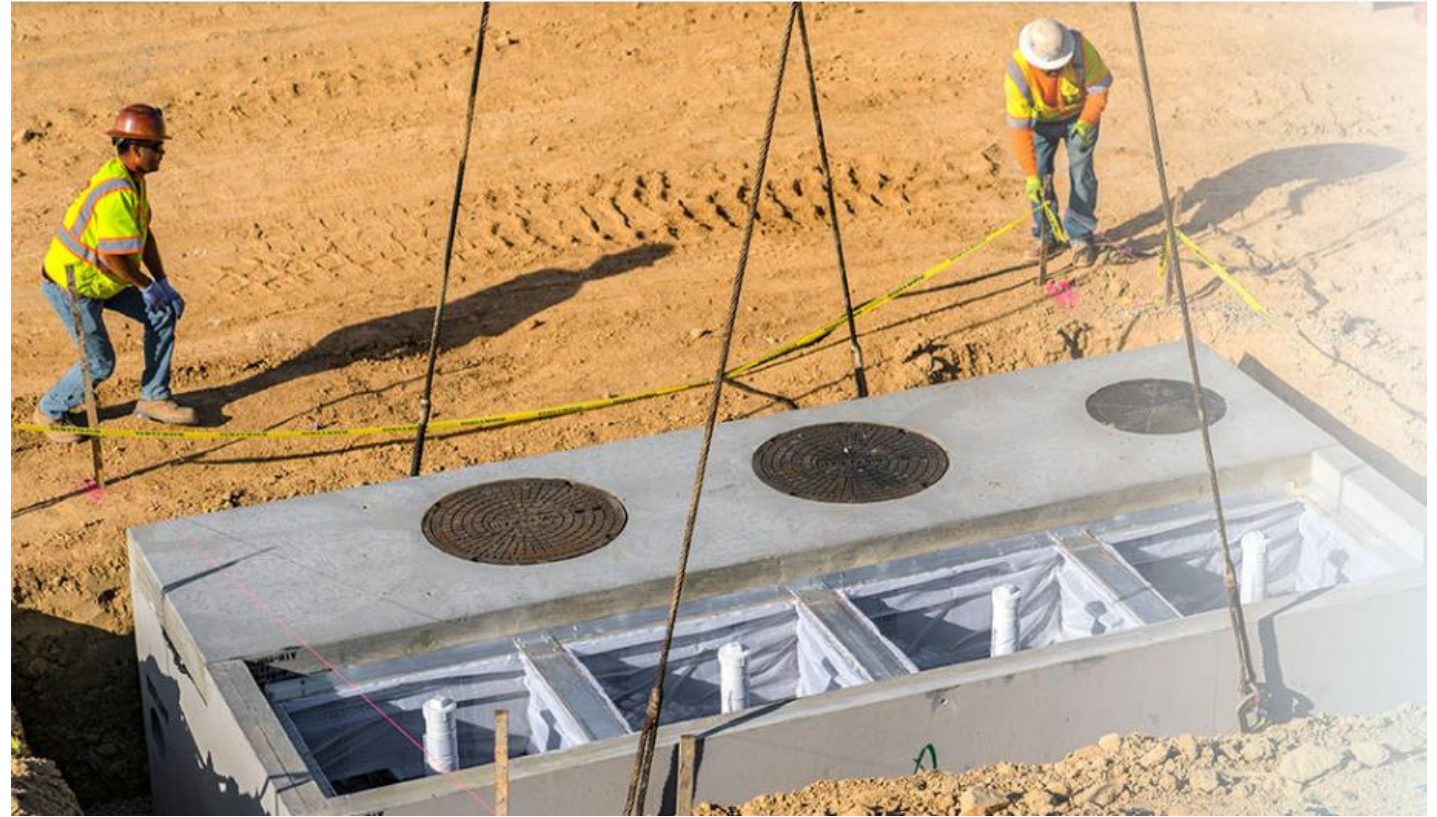
- Tree mitigation (cont'd):
 - Coordinate with Trees for Seattle, Law, SDOT, SCL, Parks, community and non-profit groups
 - Trees for Seattle program
 - Partner with SDOT for offsite mitigation - plant new trees in South Park
 - Fund for rehabilitating existing SDOT trees



New and Rehabilitated Street Trees in South Park adjacent to sidewalks and trails

Sustainability Highlights

- Stormwater Treatment:
Modular Wetland



Project Schedule



THANK YOU.

