



South Park Pump Station

Design Development Presentation for the Seattle Design Commission

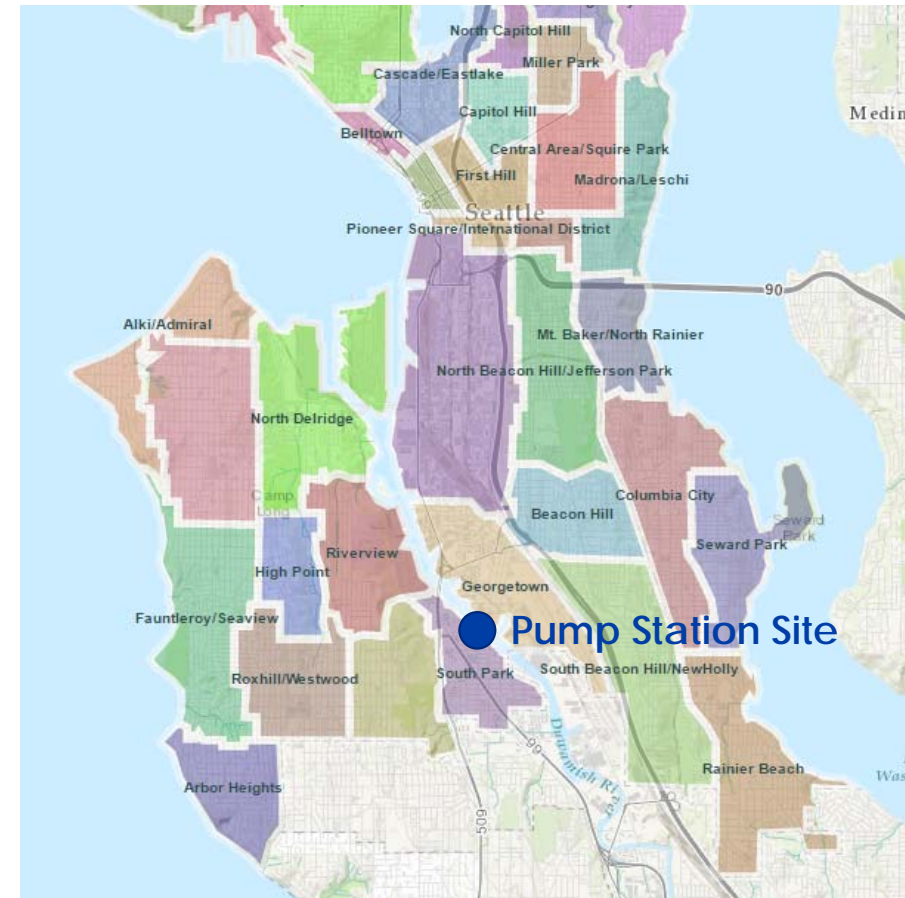
August 1, 2019

Shailee Sztern, Project Manager, SPU
Karen Kiest, Landscape Architect, KK|LA
Meredith Hall, Landscape Architect, KK|LA
Sarah Fischer, Architect, KPG

Presentation

OUTLINE

- SPU's South Park Drainage Program and Project Purpose
- Community Themes and Site Layout Drivers
- Site Context
- Previous Presentation Summary
- Landscape Design Development
- Architectural Design Development
- Project Schedule



SPU Stormwater Drainage Basin

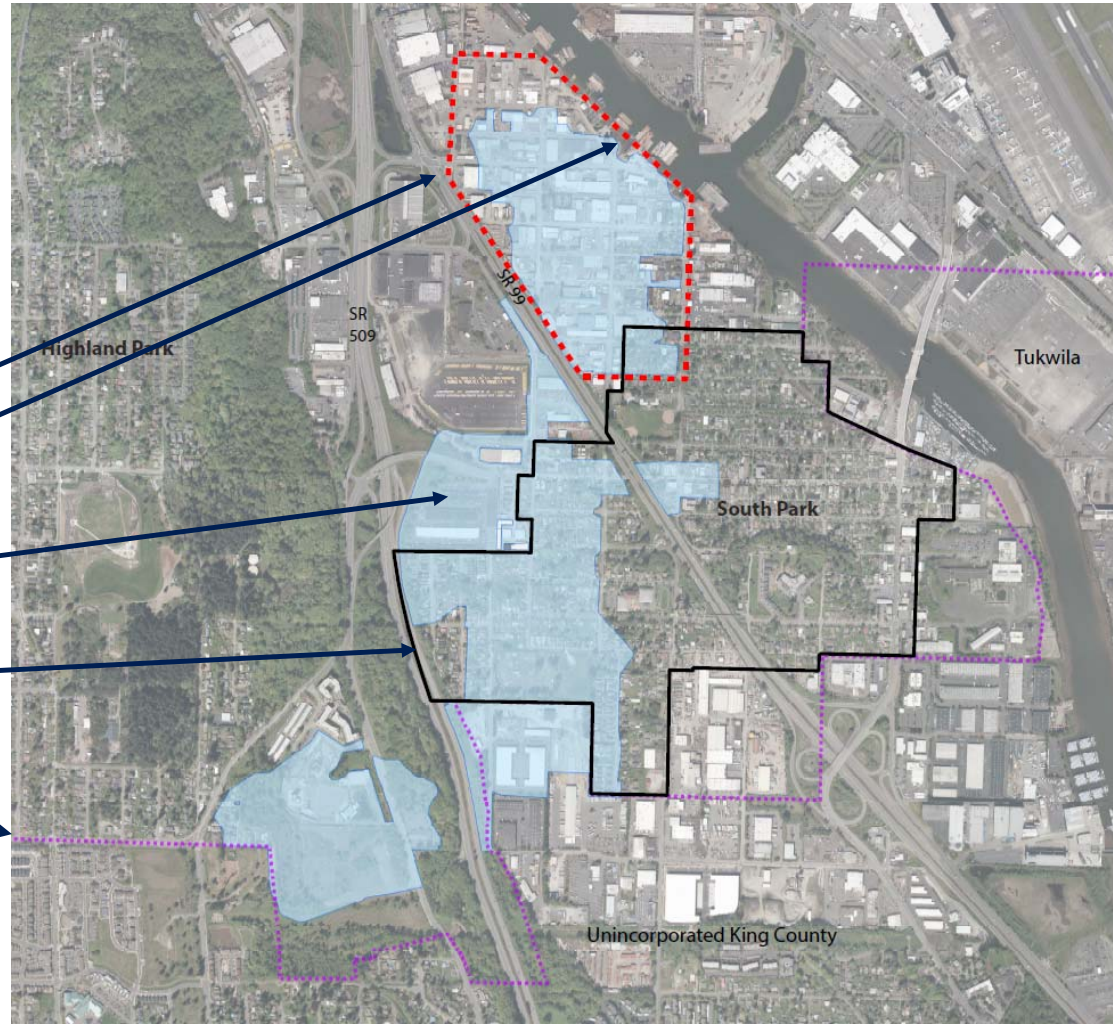
Drainage Improvements

Drainage Outfall

Drainage Basin

Urban Village

City Limits



SPU Drainage Program

Pump Station

SPU
Complete 2021



Conveyance and Street Improvements

SPU and SDOT
Complete 2021

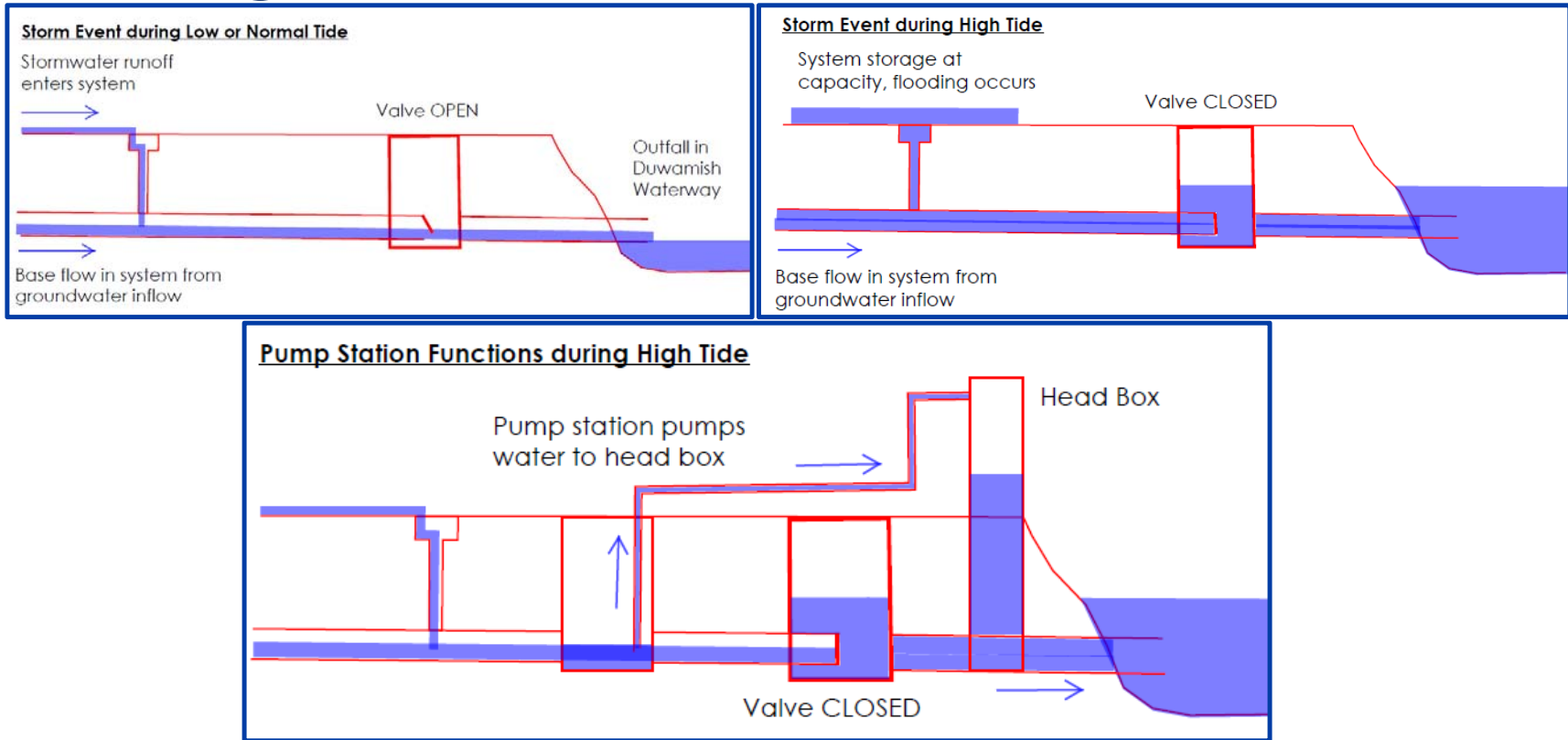


Water Quality Treatment Facility

SPU
Complete 2025 per EPA
consent decree



Drainage System Function



Community Themes

- Urban Village
 - Anti-displacement and affordable housing policies
 - Job and economic opportunities
 - Sea level rise adaptation
 - Safety, connectivity and wayfinding
- Industrial Neighbors
 - Public space for lunch breaks
 - Pedestrian safety a concern
 - Facility security a concern

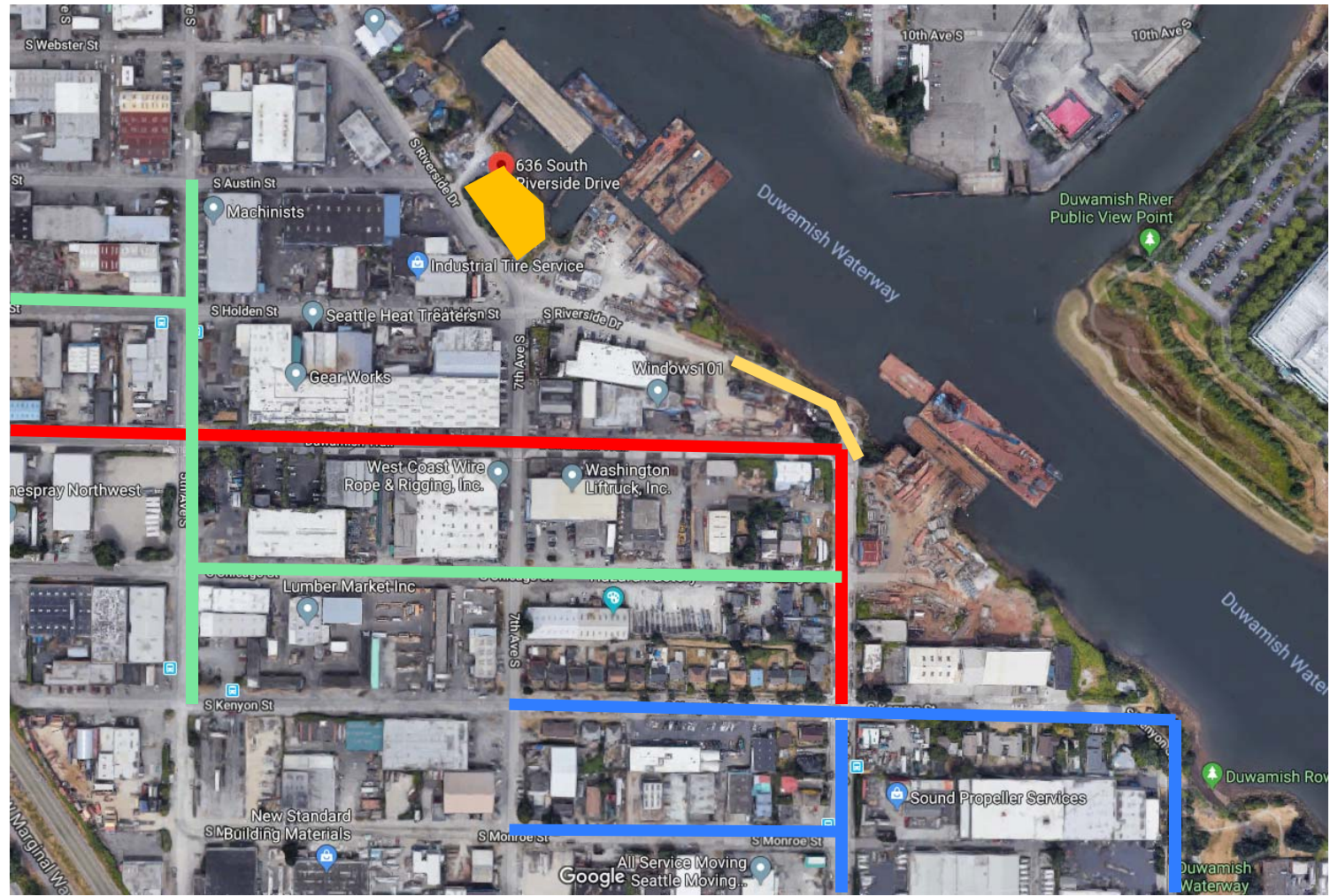
RECENT CONNECTIONS

- Pacific Pile and Marine
- Machinists Inc.
- Schuchart
- Duwamish Valley Action Team
- Outside Citywide Inter-Disciplinary Team (OPCD-led)
- Center for Community Investment Team (SPU-led)
- Friends of Street Ends and SDOT Street End Program
- Seattle Police Department (CPTED Principals)



Connectivity and Safety

-  Pump Station Site
-  Planned Sidewalks
-  Duwamish River Trail
-  Existing Sidewalk
-  8th Ave S & S Riverside Drive Street End Park



Site Layout - Major Drivers

- Shoreline District requirements
 - 10 feet of regulated public access
 - 15-foot shoreline protection set back
- Sea level rise adaptation
- Maximize public space
- Facility and site security
- SPU operations and maintenance access





Pacific Pile

S Riverside St

Riverside frontage (north)



Pump station site (looking east)



Riverside (looking south)

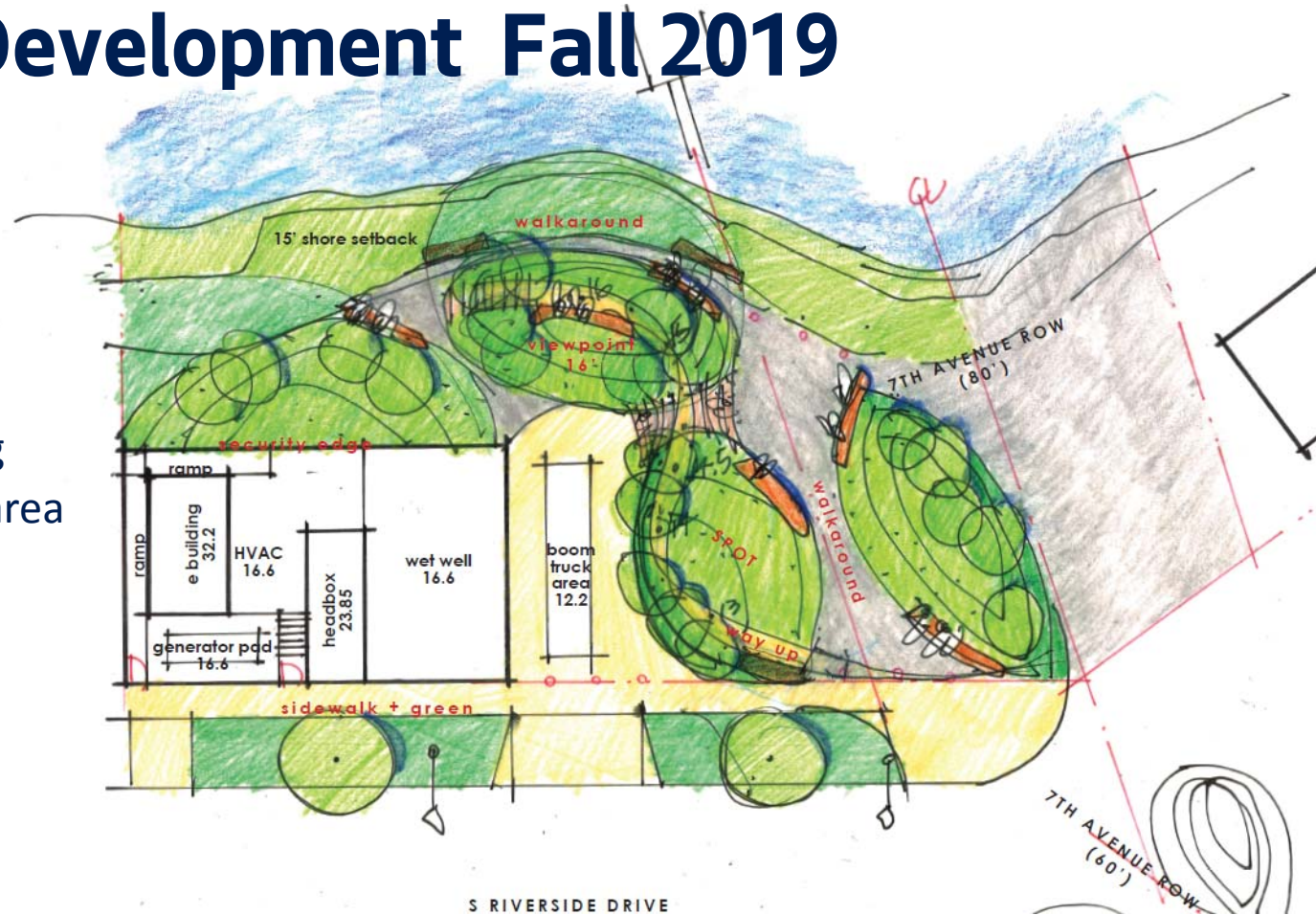


Riverside frontage (south)



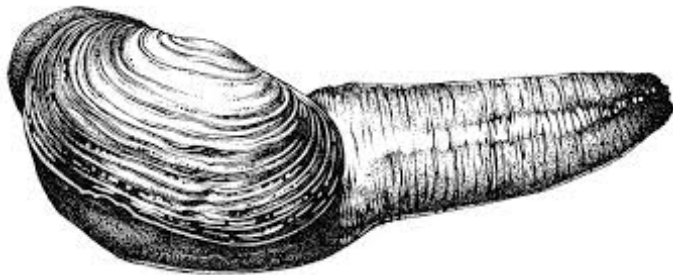
Site Concept Development Fall 2019

- Reduce facility footprint
- Maximize public access
- Raise facility and site
- Recognize 7th Avenue view
- Maximize views from site
- Recognize shoreline setting
- ROW and site landscaped area separate



2nd Study - Bigger Clams

*Landscape
embraces street-
end R.O.W.*



Site Design (December 2018)



Previous SDC Feedback (December 2018)

Sustainability

- Incorporate sustainable materials into the project design.
- Consider providing alternative paving options other than asphalt.

Landscape concept and materials

- Consider increasing the size of the proposed clam shaped land forms.
- Provide more areas for users to sit.
- Include some indication (signage, materials, etc.) that differentiates public space.
- Incorporate materials associated with industrial and shoreline authenticity.

Circulation and site layout

- Describe how the proposed landscape forms and circulation will work together.

Architectural form and character

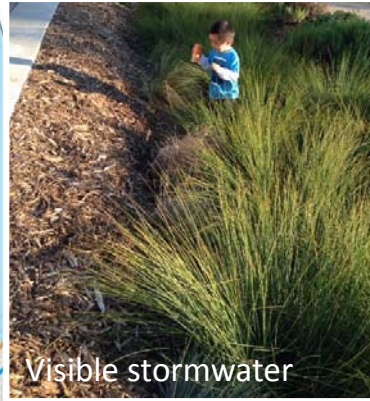
- Consider screening and/or blending the generator in with the building façade.
- Appreciate walls and fencing will provide interest while blending in with the architecture of the facility.

Community themes, SPU feedback, and SPD feedback

- Consider incorporating additional elements that create an awareness for climate change.
- Recognize facility and open space will contribute to the increased connectivity of street ends throughout the South Park Community.
- Consider security and lighting the open space area.



Sustainability & Resiliency



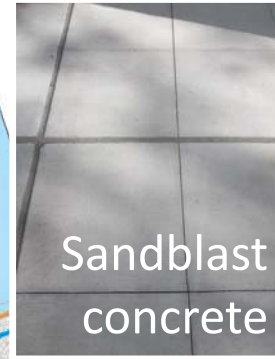
Raised landscape



Sea-level-rise interpretation



Materials



Planting



SYMBOL	BOTANICAL NAME	COMMON NAME
CONIFEROUS TREES		
	PINUS CONTORTA VAR. CONTORTA	SHORE PINE
	PSEUDOTSUGA MENZIESII	DOUGLAS FIR
	THUJA PLICATA	WESTERN RED CEDAR
DECIDUOUS TREES		
	RHAMNUS PURSHIANA	CASCARA
	ACER CIRCINATUM (40%)	VINE MAPLE
	AMELANCHIER ALNIFOLIA (30%)	SASKATOON
	CORNUS NUTTALLII (30%)	PACIFIC DOGWOOD
LARGE SHRUBS		
	GARRYA ELLIPTICA	COAST SILKTASSEL
	HOLODISCUS DISCOLOR	OCEANSPRAY
	MAHONIA AQUIFOLIUM	TALL OREGON GRAPE
	PHILADELPHUS LEWISII	MOCK ORANGE
	RHODODENDRON MACROPHYLLUM	PACIFIC RHODODENDRON
	RIBES SANGUINEUM	RED FLOWERING CURRANT
	RUBUS PARVIFOLIUS	THIMBLEBERRY
	SPIRAEA DOUGLASII	ROSE SPIREA
	VACCINIUM OVATUM	EVERGREEN HUCKLEBERRY
SMALL SHRUBS & GROUNDCOVERS		
UPLAND PLANTS		
	DESCHAMPSIA CAESPITOSA	TUFTED HAIRGRASS
	CORNUS SERICEA 'KELSEY'	KELSEY DOGWOOD
	FRAGARIA CHILOENSIS	BEACH STRAWBERRY
	GAULTHERIA SHALLON	SALAL
	MAHONIA REPENS	CREeping OREGON GRAPE
	POLYSTICHUM MUNITUM	SWORD FERN
SHORELINE PLANTS		
	ARBUTUS MENZIESII	PACIFIC MADRONE
	GAULTHERIA SHALLON	SALAL
	SYMPHORICARPOS ALBUS	SNOWBERRY
	LEYMUS MOLLIS	AMERICAN DUNEGRASS
	ROSA NUTKANA	NOOTKA ROSE
	ASTER DOUGLASII	DOUGLAS ASTER
	FRAGARIA CHILOENSIS	BEACH STRAWBERRY
ROW PLANTS		
	CORNUS SERICEA 'KELSEY'	KELSEY DOGWOOD
	FRAGARIA CHILOENSIS	BEACH STRAWBERRY
	GAULTHERIA SHALLON	SALAL
	MAHONIA REPENS	CREeping OREGON GRAPE
BIORETENTION PLANTS		
	CAREX OBNUPTA	SLOUGH SEDGE
	SIDALCEA HENDERSONII	HENDERSON'S CHECKER-MALLOW
	JUNCUS PATENS	BLUE RUSH
	SOD TURF	

trees

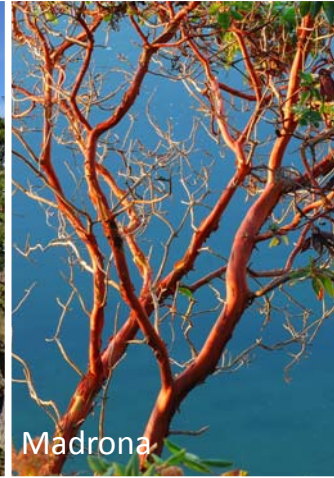
Planting



Cascara (street trees)



Shore Pines



Madrona



Western Red Cedar



Vine Maple

shrubs



Thimbleberry



Oceanspray



Evergreen Huckleberry

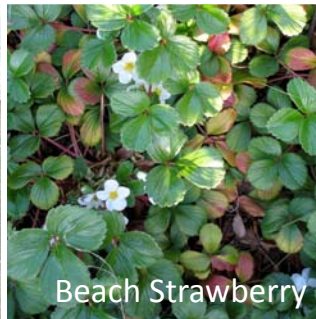


Oregon Grape

shore



logs



Beach Strawberry



Snowberry



Salal



American Dunegrass

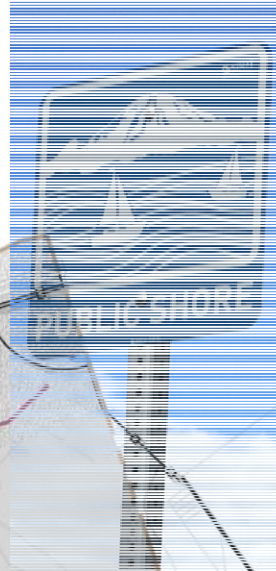
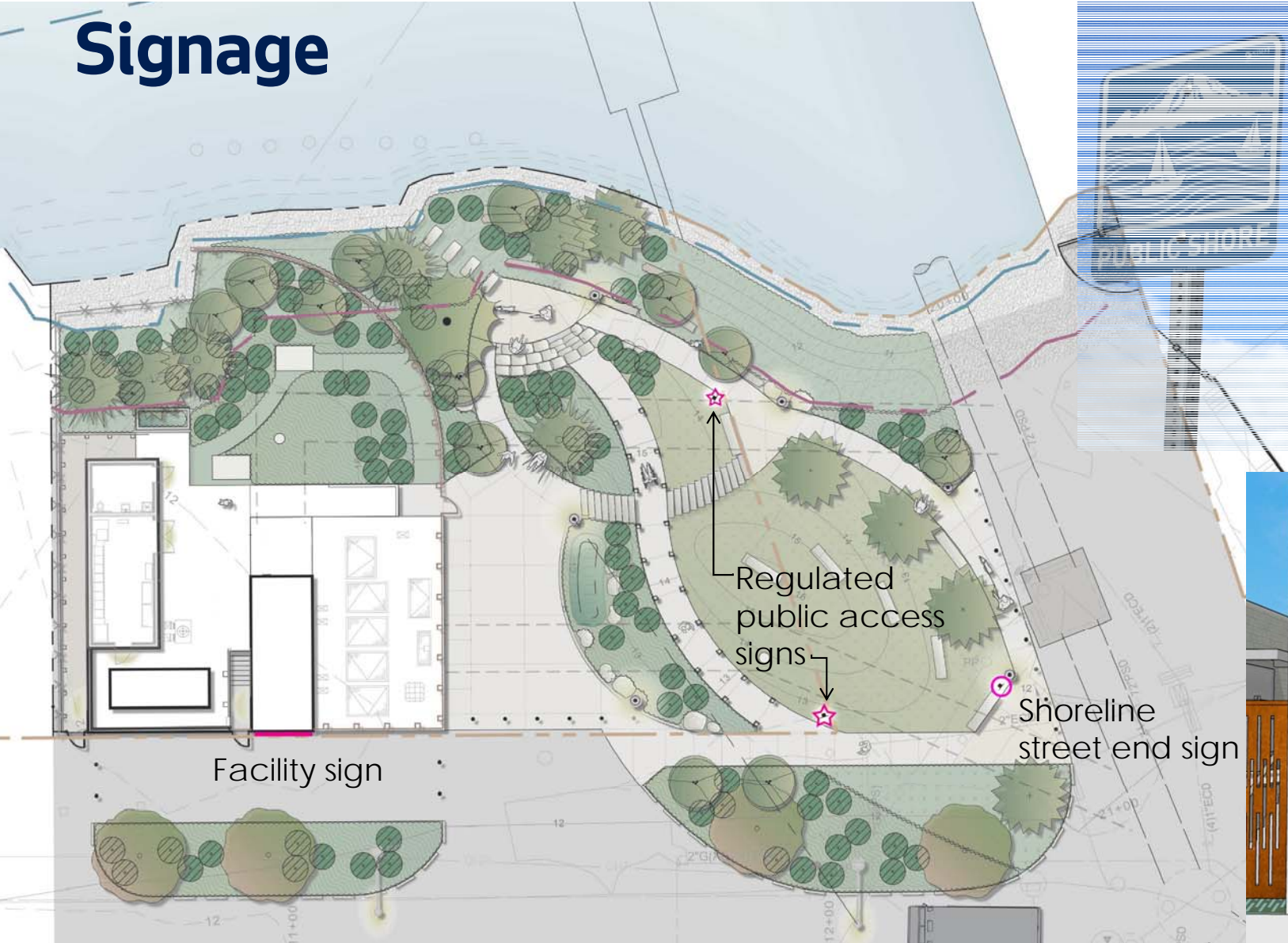


Nootka Rose

Lighting



Signage



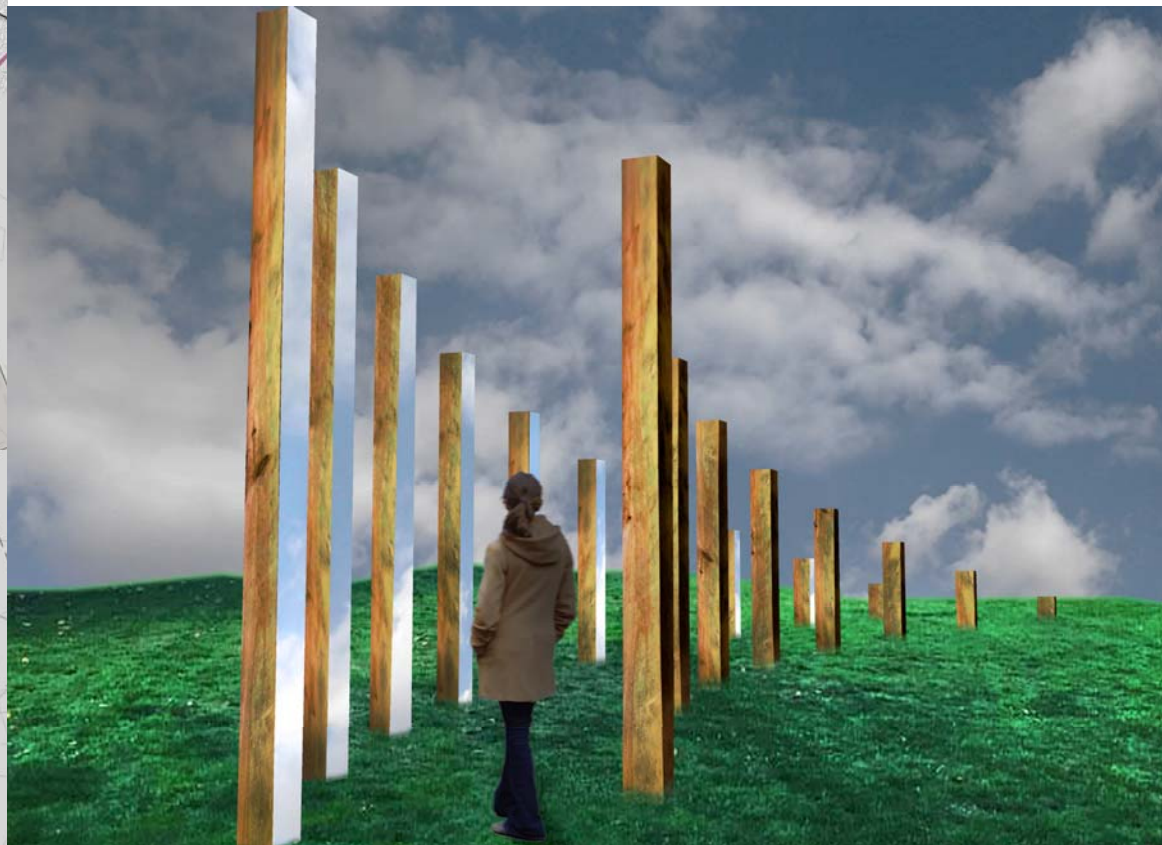
Facility sign

Regulated
public access
signs

Shoreline
street end sign



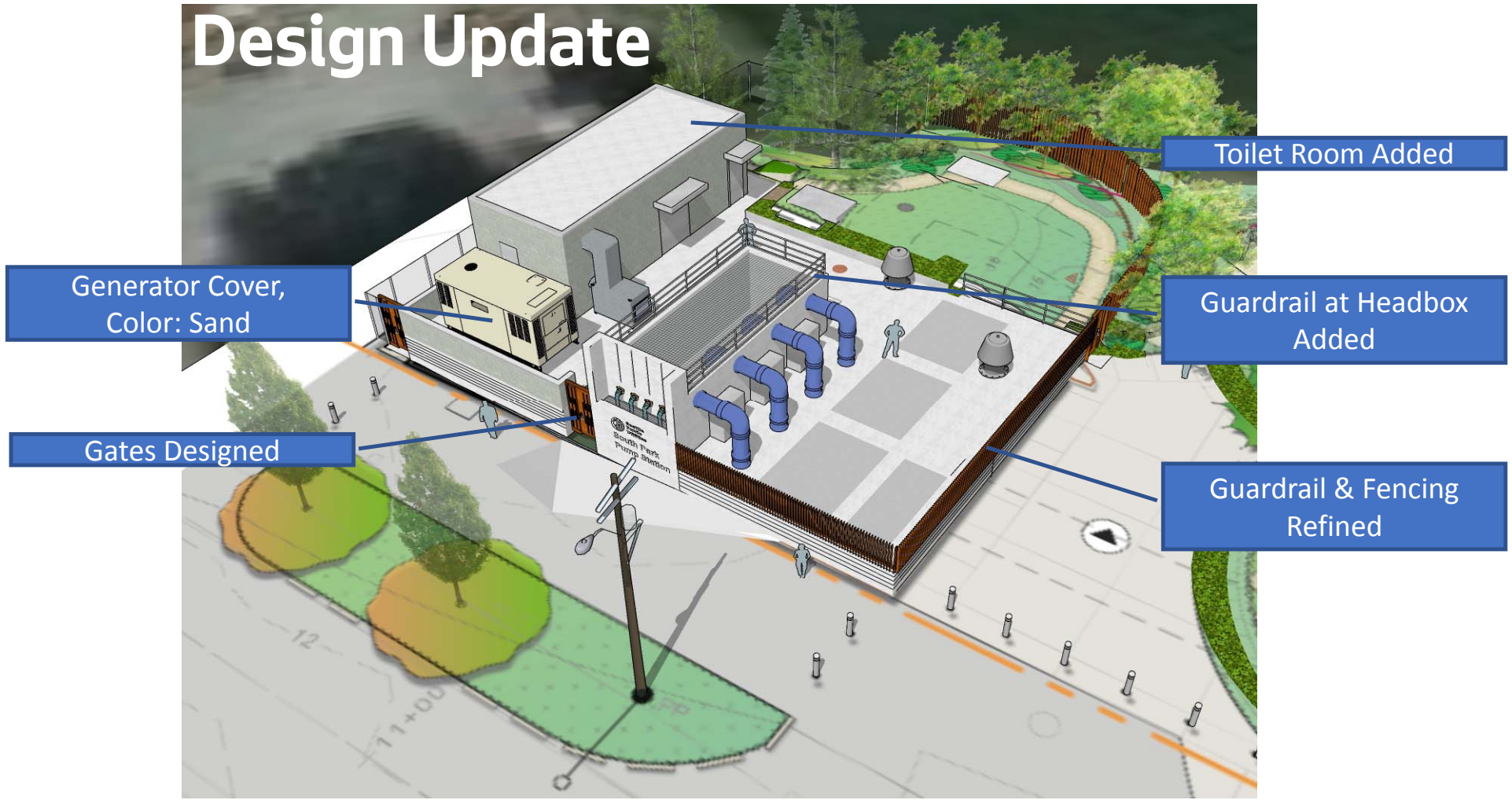
Art - Ben Zamora



Architectural Concept (December 2018)



Design Update



Generator Cover,
Color: Sand

Toilet Room Added

Guardrail at Headbox
Added

Gates Designed

Guardrail & Fencing
Refined



Developed Design





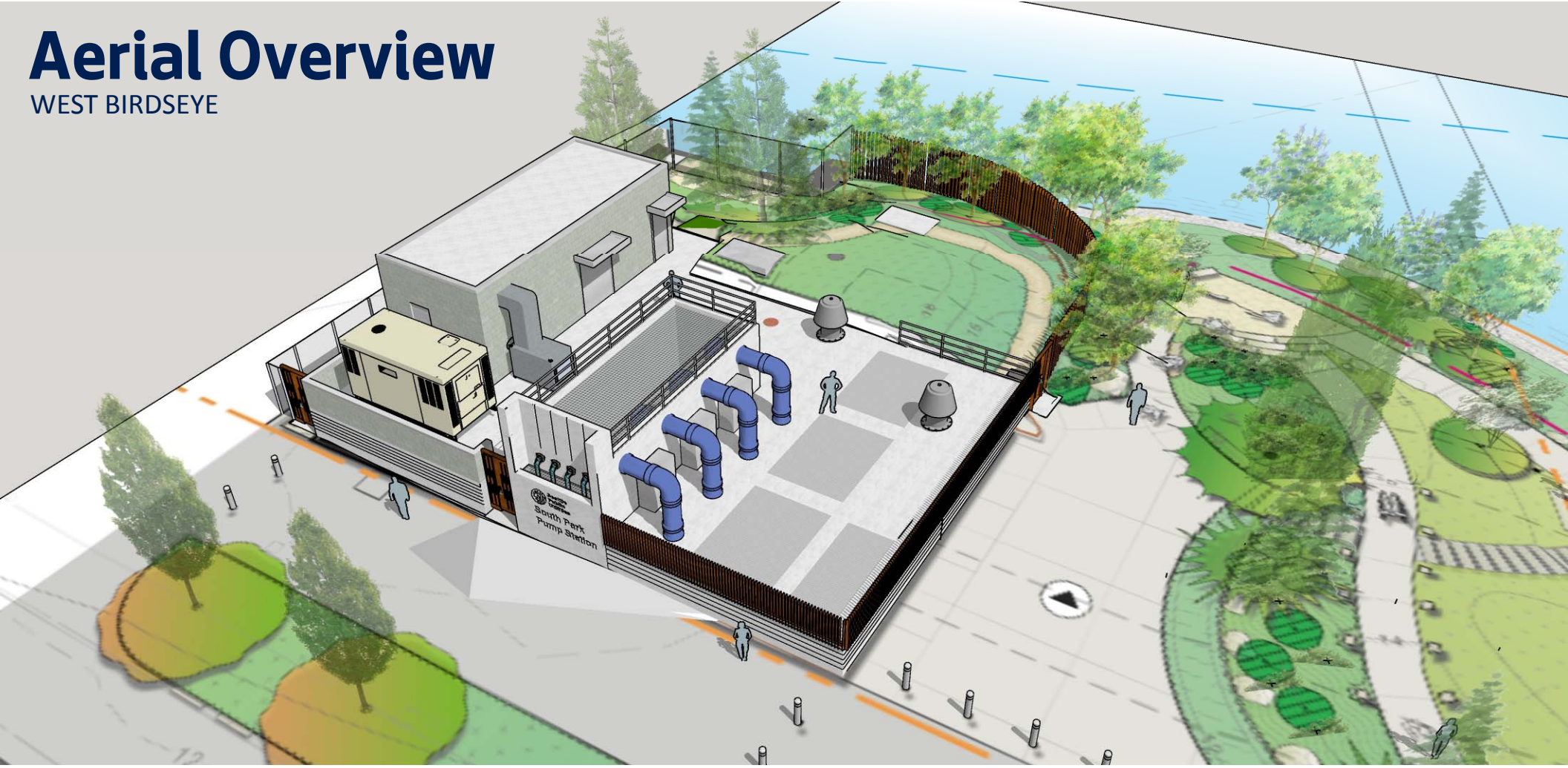
Perspective - From Northwest



Perspective - From Southwest

Aerial Overview

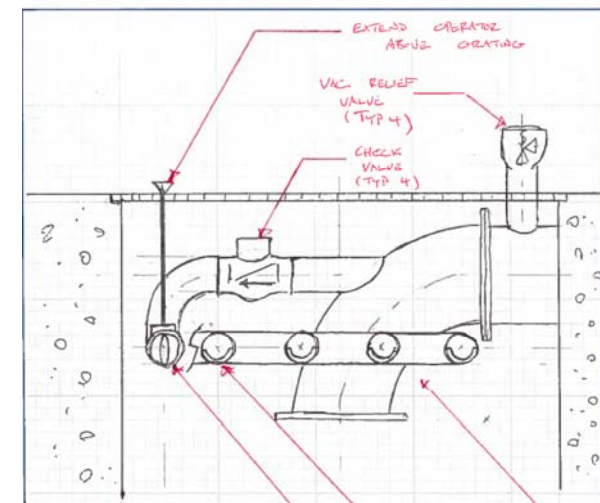
WEST BIRDSEYE



Stormwater Story

Passive Stormwater Fountain

When any of the (4) pumps are on, the fountain is on



Materials



Articulated
Concrete
Formwork



Fencing



Standard CMU



Stormwater Feature



Fence Design

Questions?

