

# Vacation of Westlake Avenue between Pine and Pike Streets

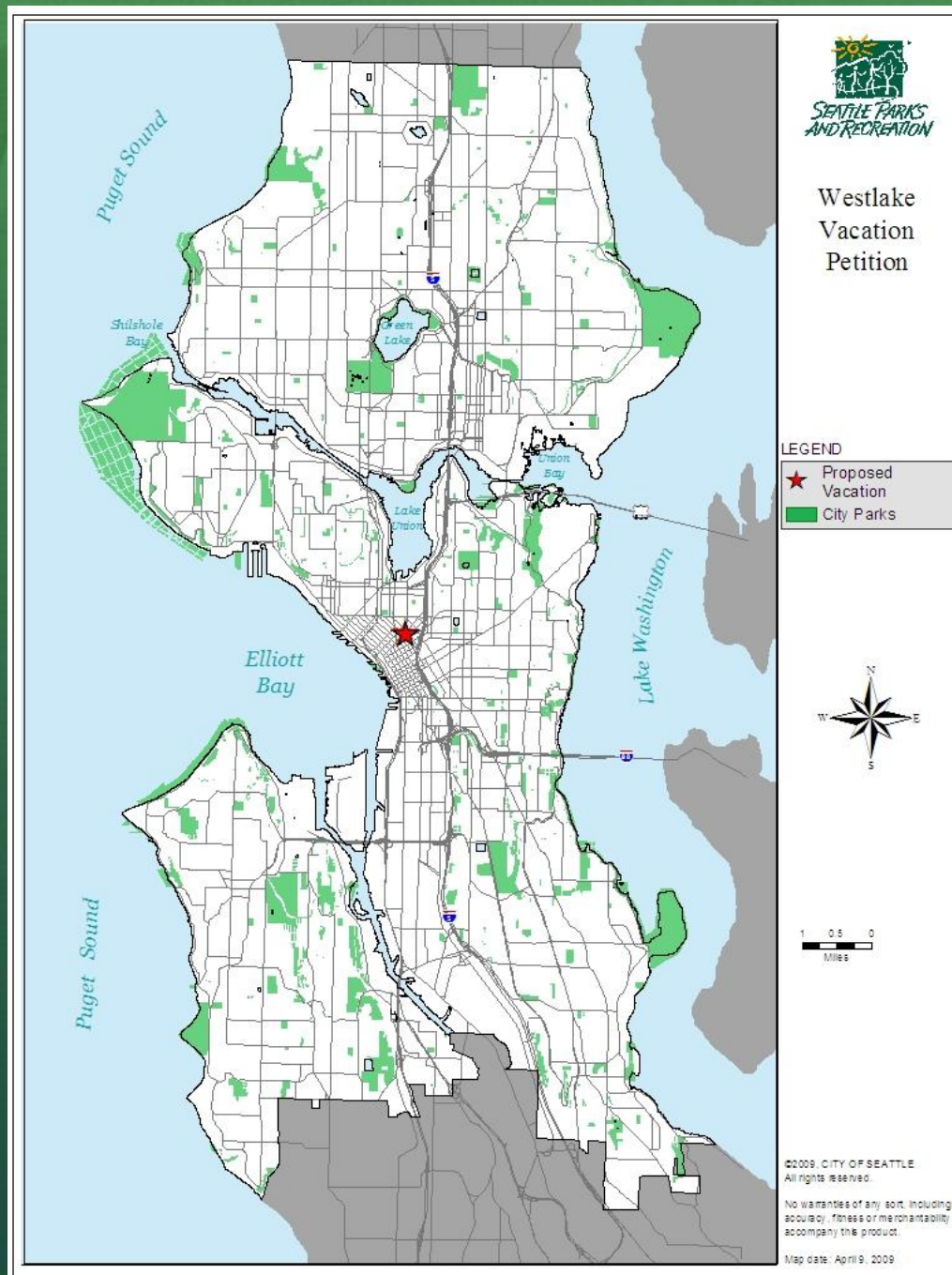
---

C.F. 311670

Design Commission Meeting 9/15/2011



# Westlake Location Map





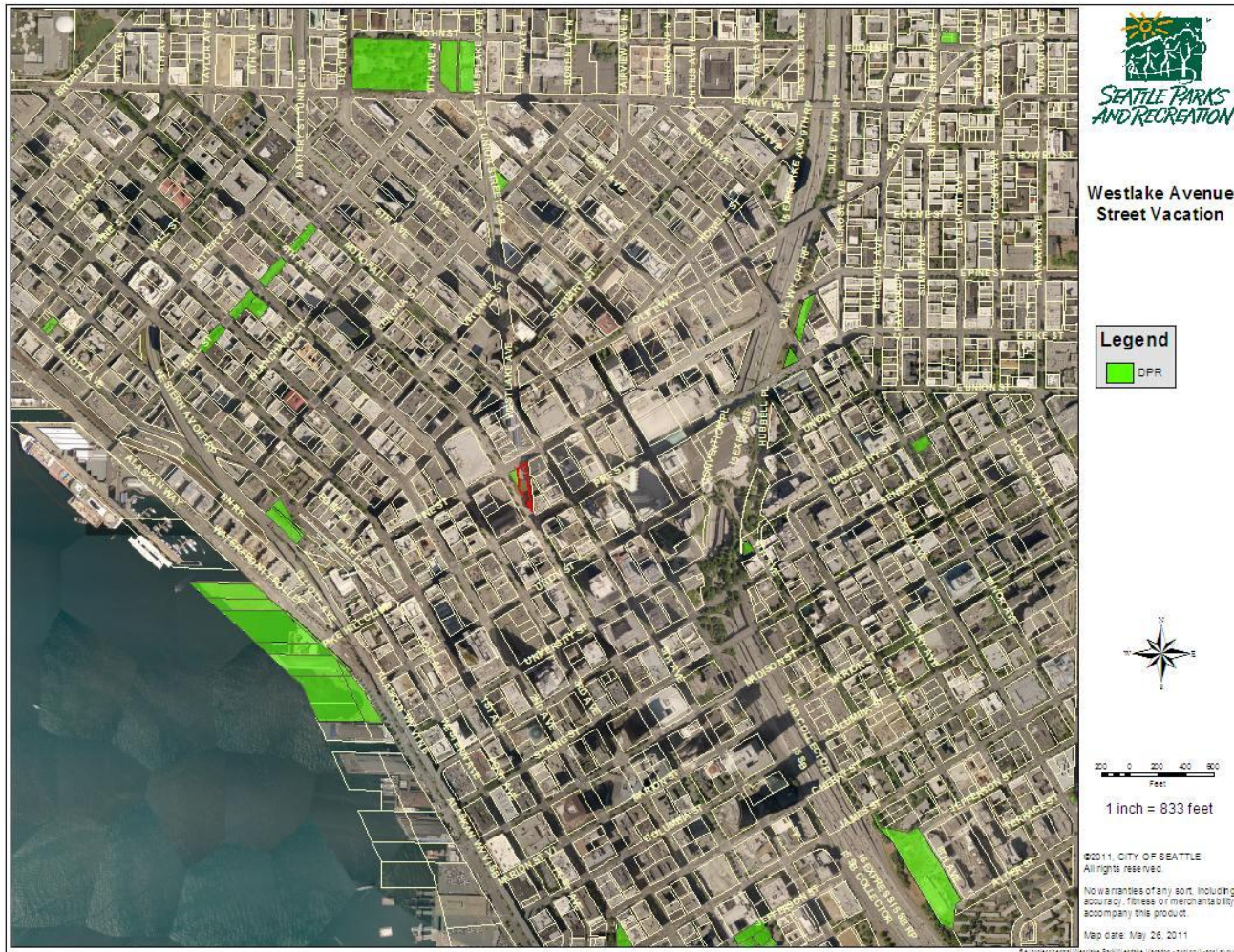
## A large crowd of people gathered outdoors for a protest or rally. Many individuals are wearing winter clothing like hats and coats. Several people are holding signs, including one that says "VOTE" and another that says "FBI - FBI". The crowd is dense and fills the frame.





# Westlake

## Urban Context





# Westlake Park

## History

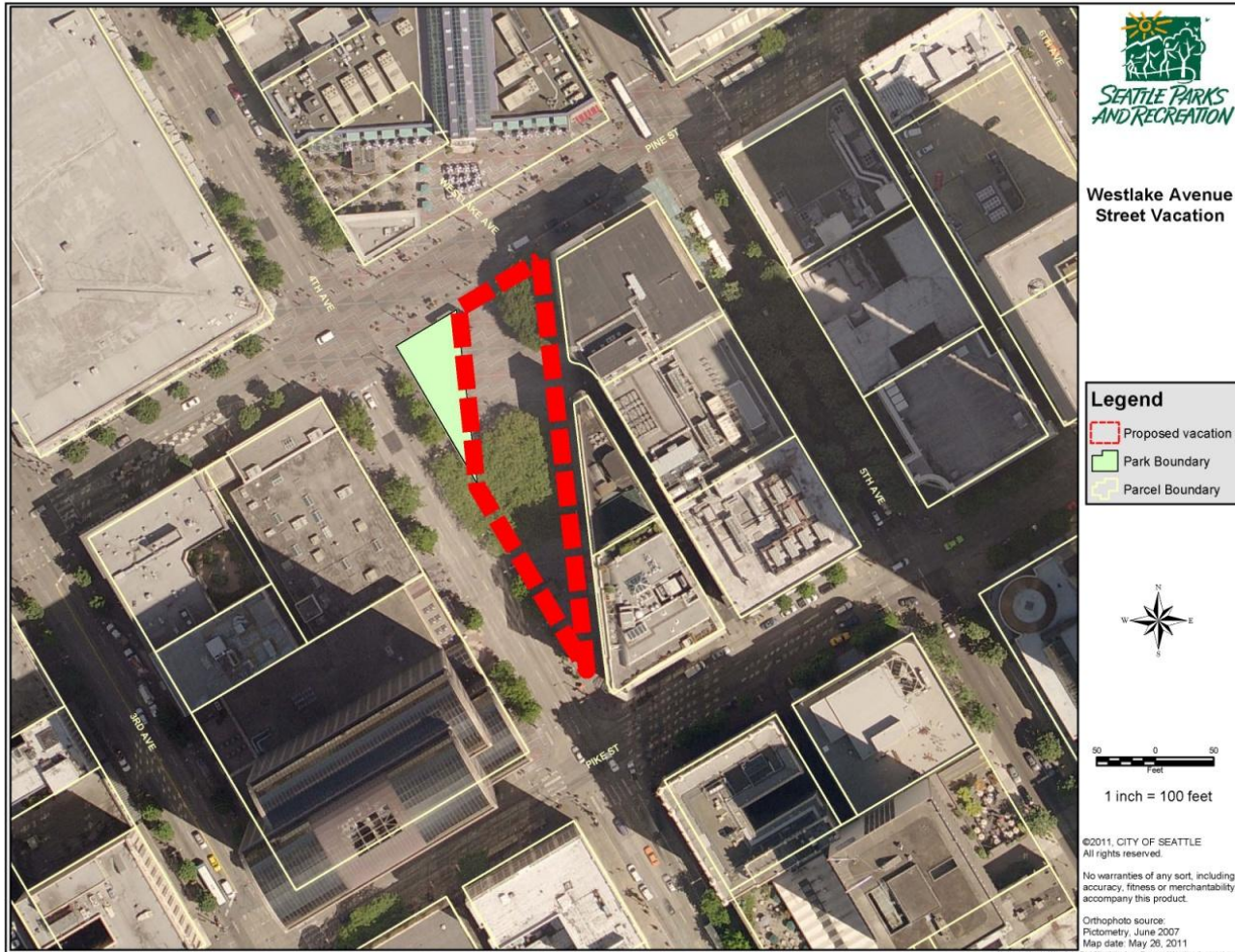


*View of old Monorail Station in Westlake Ave*

- The park and mall were proposed by the Central Association of Seattle (now Downtown Seattle Association) as early as 1968, but political and legal challenges delayed formal opening for twenty years.
- Ordinance 104797 in 1975 had directed preparation of a plan “to provide an aesthetically satisfying urban park of appropriate scale to strengthen the retail core of the City’s Central Business District and of a size approximately equal to the existing right-of-way of Westlake Avenue between 4th and 5th Avenues.”
- A small triangular parcel, approximately 4,000 sq ft, at the corner of 4th and Pine, previously a Bartell’s drugstore, was condemned by the City “for a public park” in 1983, finally acquired in 1987, developed with adjacent Westlake Avenue, and formally opened as Westlake Park in 1988.
- Designed by the Landscape Architecture Firm of Hanna/Olin

# Westlake

## Project Map



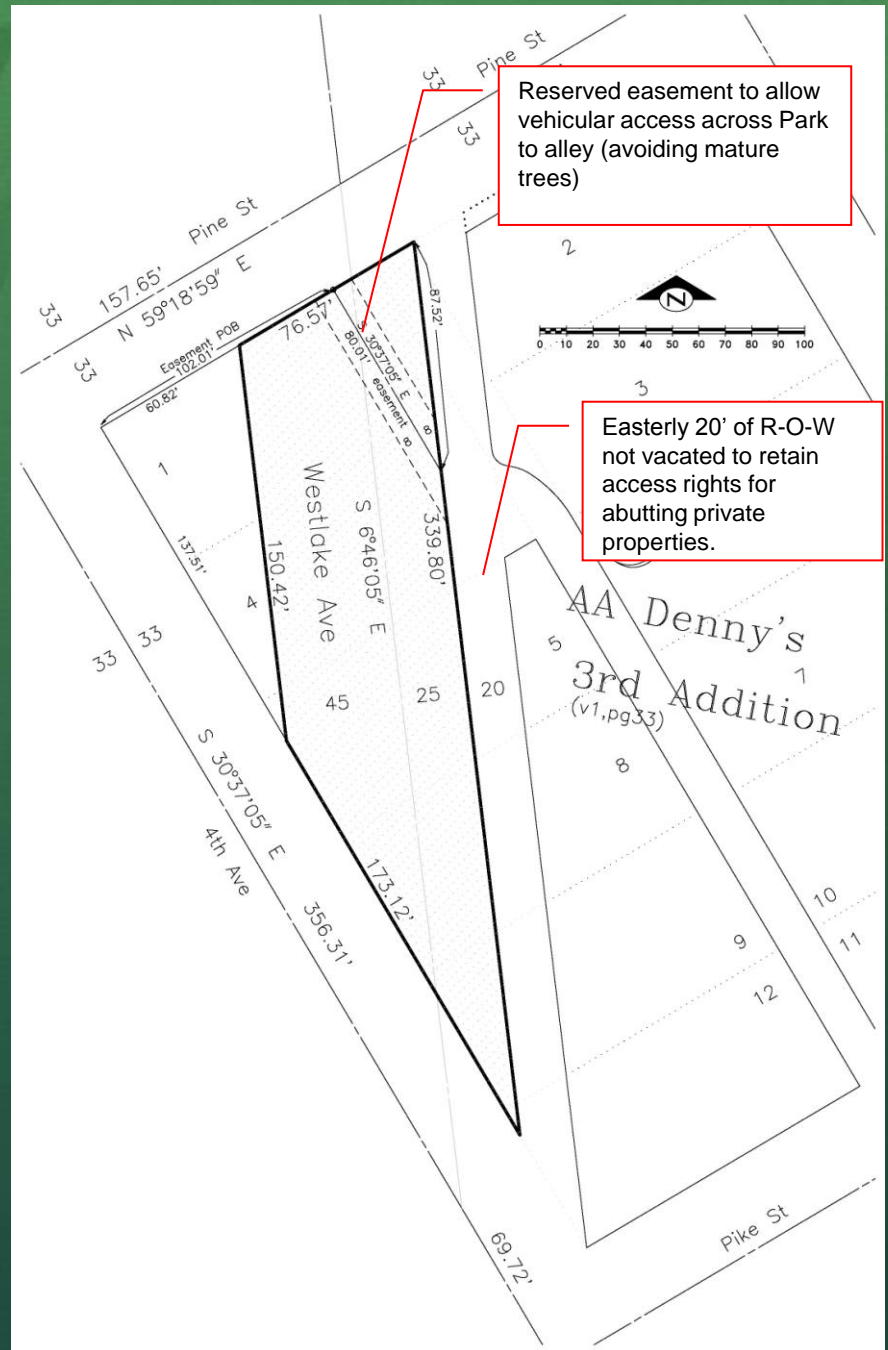


# Westlake

## Proposed Vacation Area

The street vacation will increase the legal limits of the park from approx 4,000 sq ft to nearly half an acre.

**Note:** The survey shows that the area will include an easement that will preserve existing trees while maintaining the existing vehicle access route.



# Why are we doing this?



Programming and Activities



Safety and Enforcement



Assurance of Permanent Park Space



















The background features a stylized landscape. The top and bottom sections consist of green, triangular mountain peaks. The middle section is a solid, textured orange-to-yellow gradient, resembling a ground or sky area. The text is centered within this middle section.

# Questions/Discussion