



+





SDOT Mission

To deliver a safe, reliable, efficient, and socially equitable transportation system that enhances Seattle's environment and economic vitality.

SDOT Vision

A Vibrant Seattle Through Transportation Excellence.

SDOT Jurisdiction Public Right-of-Way :

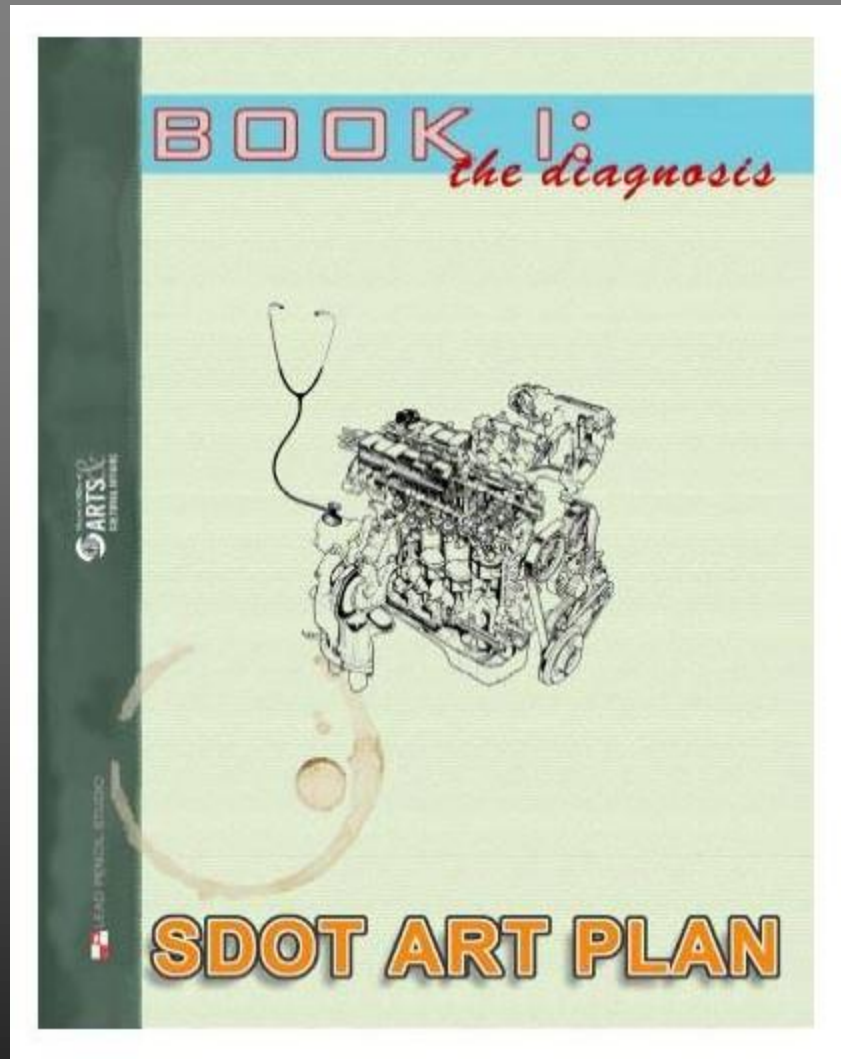
579,886,000 sq ft

24.8% of land surface within the City limits

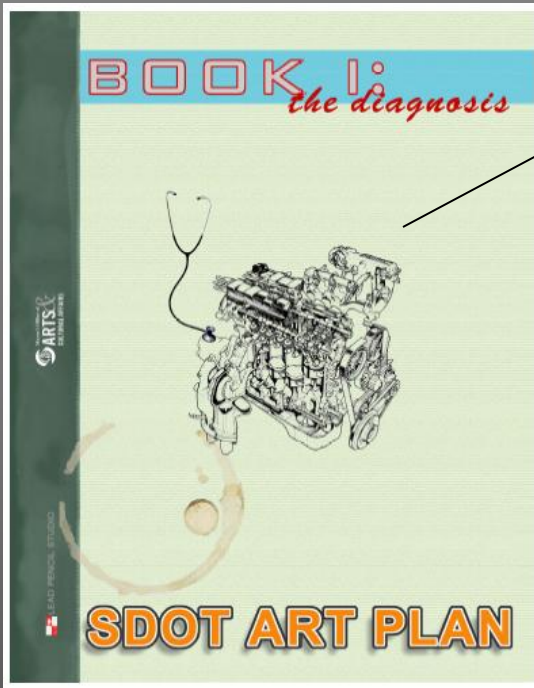
Seattle Department of Transportation 1% for Public Art Program



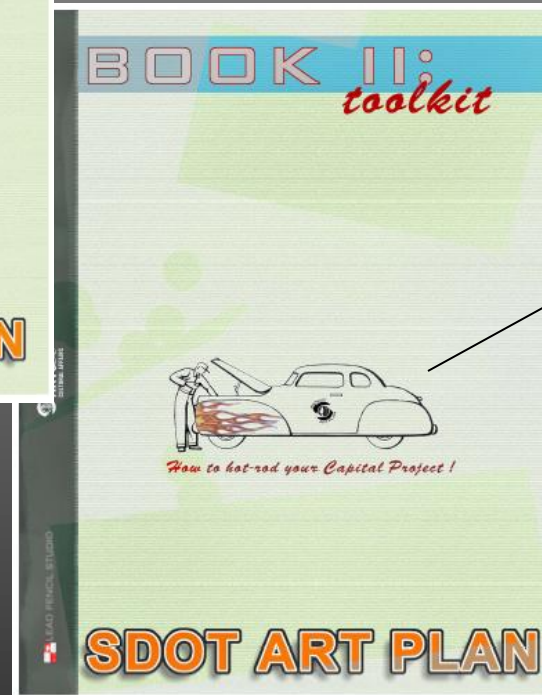
Administered by the Office of Arts & Cultural Affairs'
Public Art Program



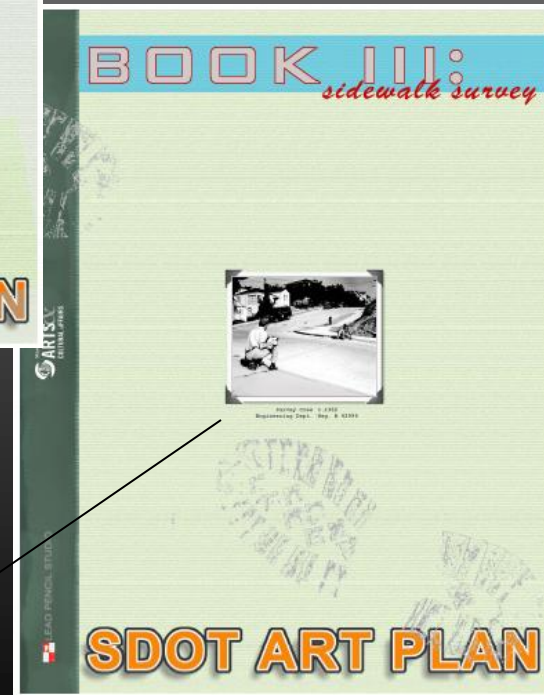
The SDOT Art Plan:
tools and inspiration
for art in the ROW



Big picture
Public Art Primer
Recommendations (by Division)



In 2 parts:
1. Toolkit for PM's
2. Special Projects



SDOT Art Plan
Daniel Mihalyo, Lead Pencil Studio, 2005

Visual record of public art
Relevant essays

Kurt Kiefer, *Second Avenue Project*



Bill Will, 4 (*Where Shall I Go Ahead*),
Union Square Triangle

toolkit: seating





toolkit: stone objects



STOP
NO PARKING ANY TIME

1400th St
CITY AVE
ONE WAY

Large glass window above the entrance.

Large glass window on the second floor.

Large glass window on the second floor.

Large cluster of white balloons.

Two people standing on the sidewalk, one holding the balloons.

Concrete bench on the sidewalk.

Concrete bench on the sidewalk.

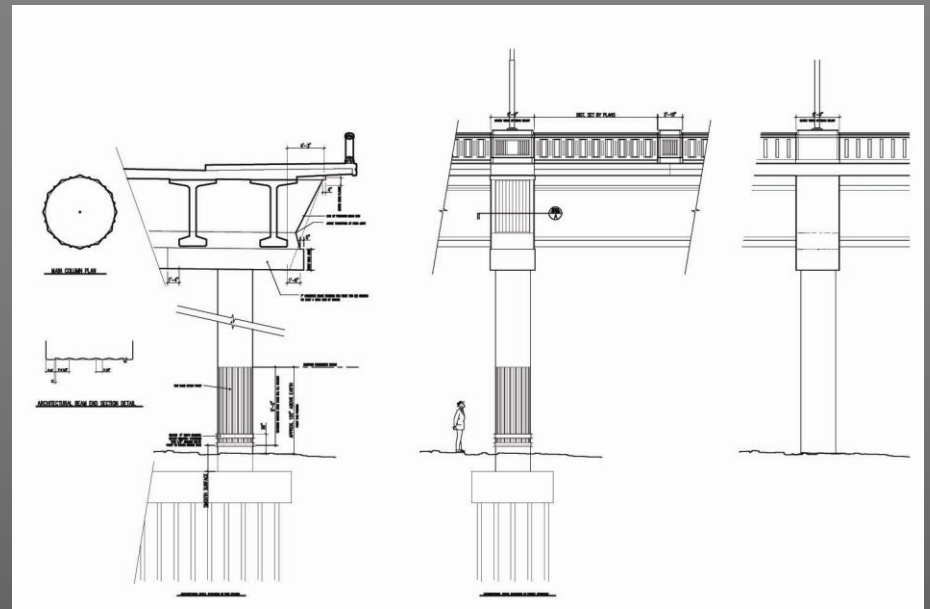
Concrete bench on the sidewalk.

Concrete bench on the sidewalk.



Items for Salvage





Fremont Bridge Approach

Artist-in-Residence involvement in design





Fremont Bridge Historical Interpretive Installation

Tina Hoggatt and Vaughn Bell

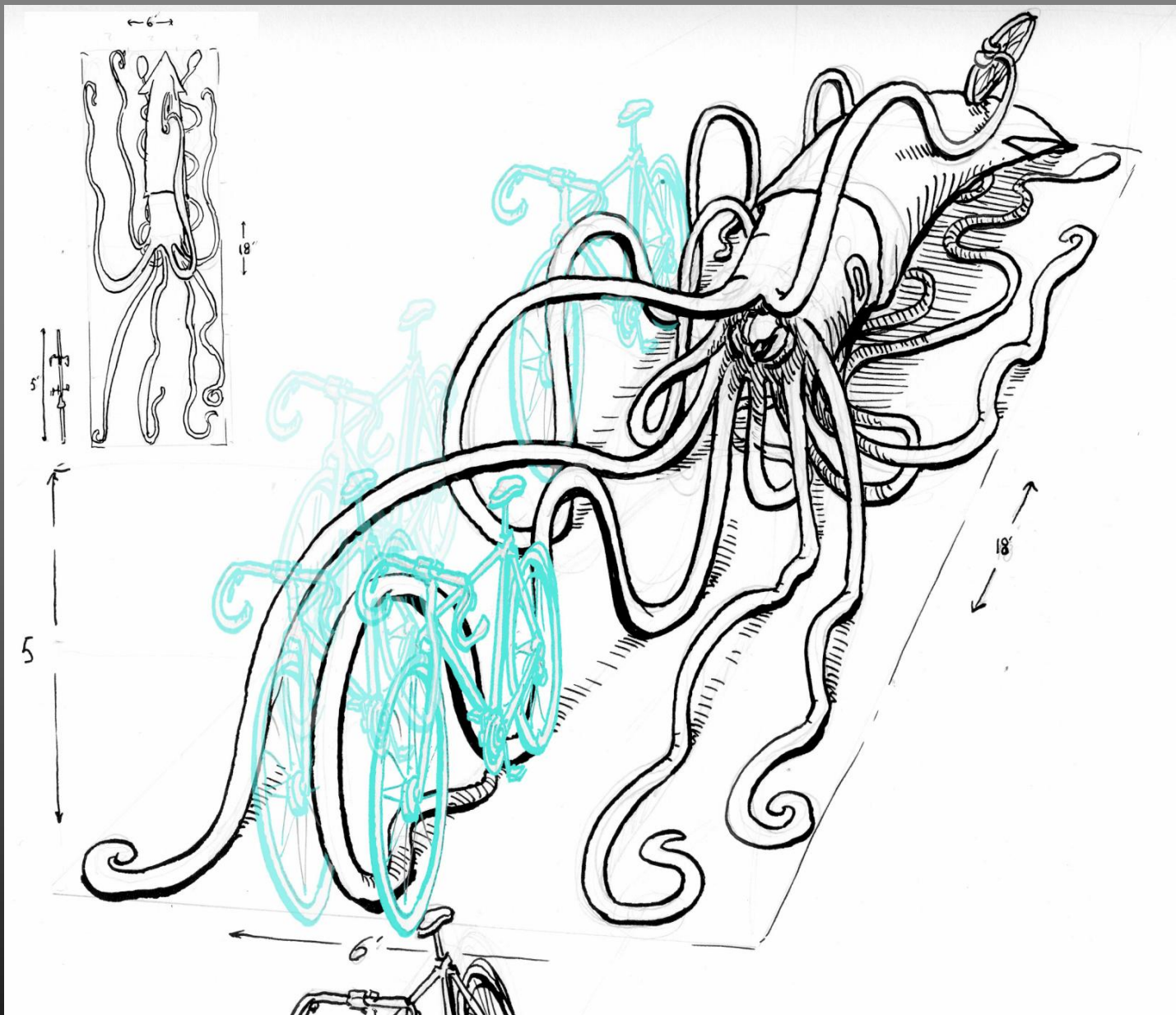
Artist involvement in SDOT capital project



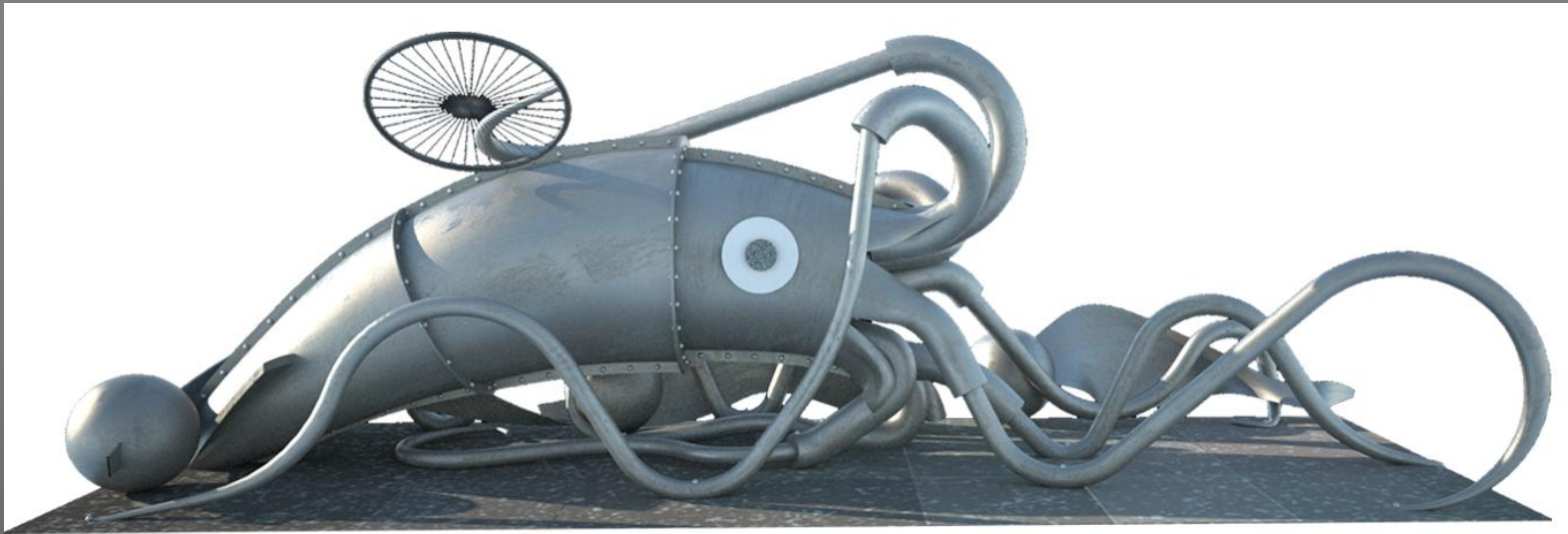


Creative bike racks in New York and Portland

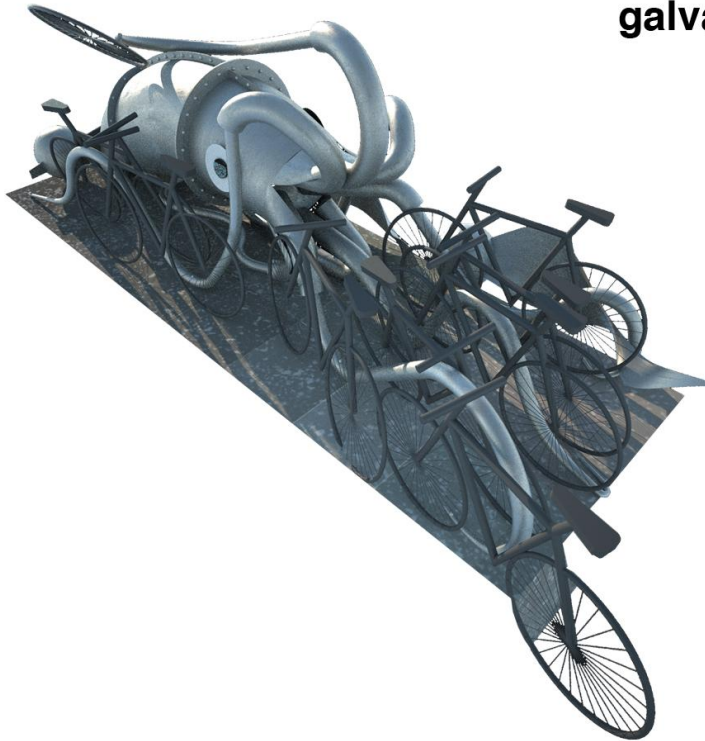
toolkit: bike racks



On-Street Bike Parking Concept Design:
Parking Squid by Susan Robb



galvanized steel





Fire Cruxent Studios,
bridge painting on I-5 near Jackson St.

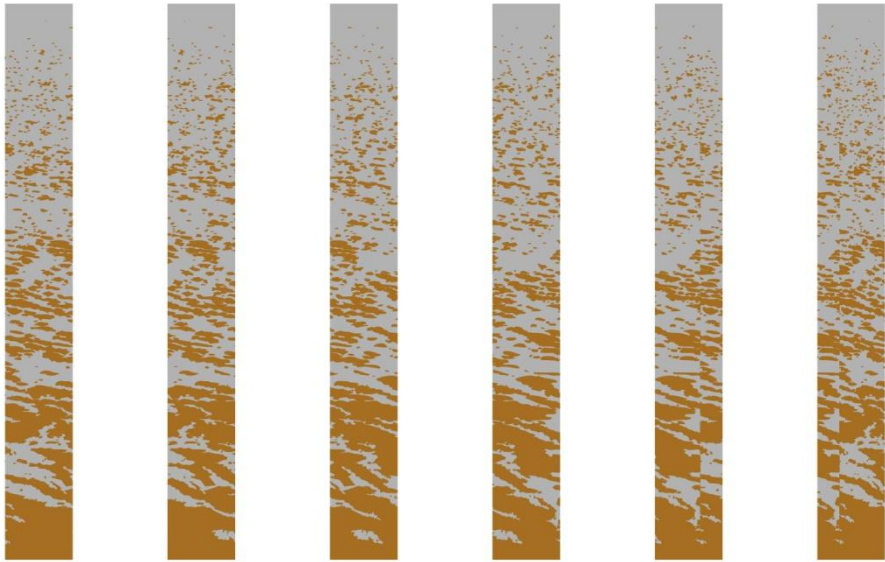


Vicki Scuri, *DNA Wave Wall*,
Galer Street overpass
SDOT 1% for Art

toolkit: surface treatment



Vicki Scuri, *DNA Wave Wall*, Galer Street
overpass
SDOT 1% for Art



Spokane St. Viaduct Widening
Artists: Merge Design
design currently in progress
SDOT 1% for Art Funds

PATTERN 1
scale: 1/4"= 1'-0"



Middle of barcode sequence



45th St. Viaduct Approach

Concrete surface treatment implemented as part of SDOT construction

Design by Vaughn Bell

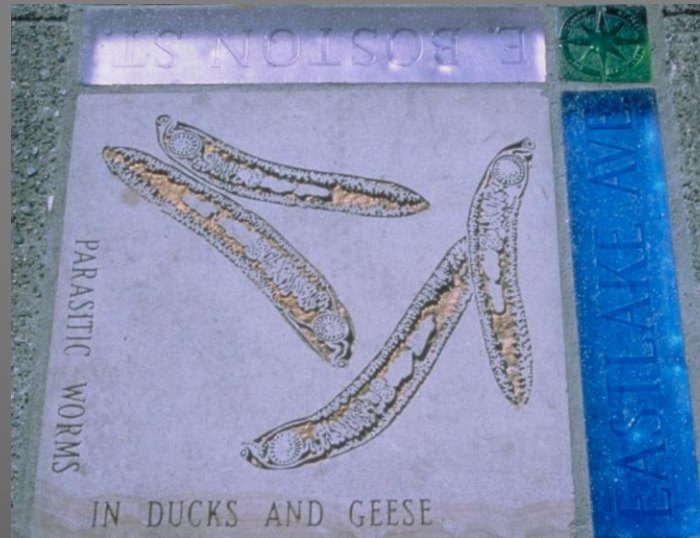




Jack Mackie,
Dance Steps



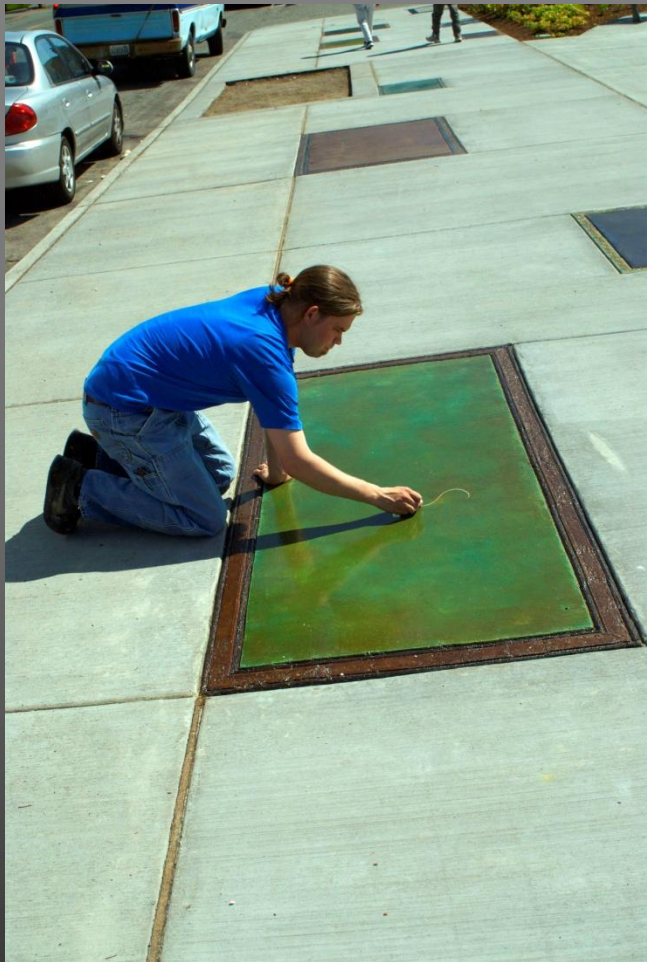
toolkit: sidewalk projects



Stacey Levy,
Cornerstones
SDOT 1% for Art Funds

Options for enhancing sidewalk projects:

- street name inlay
- wayfinding
- colored and textured surfaces



Salon by SuttonBeresCuller
Installed in the sidewalk adjacent to
Morgan Junction Park in West Seattle
SDOT Sidewalk Repair Program and
Office of Arts and Cultural Affairs

Linda Wysong, *Perch*, Fifth Avenue NE Streetscape Project





Sidewalk Enhancement Opportunities:
concrete stamping





Kimball Elementary Safe Routes
to Schools project

Sidewalk stamp designed by
kindergarten students



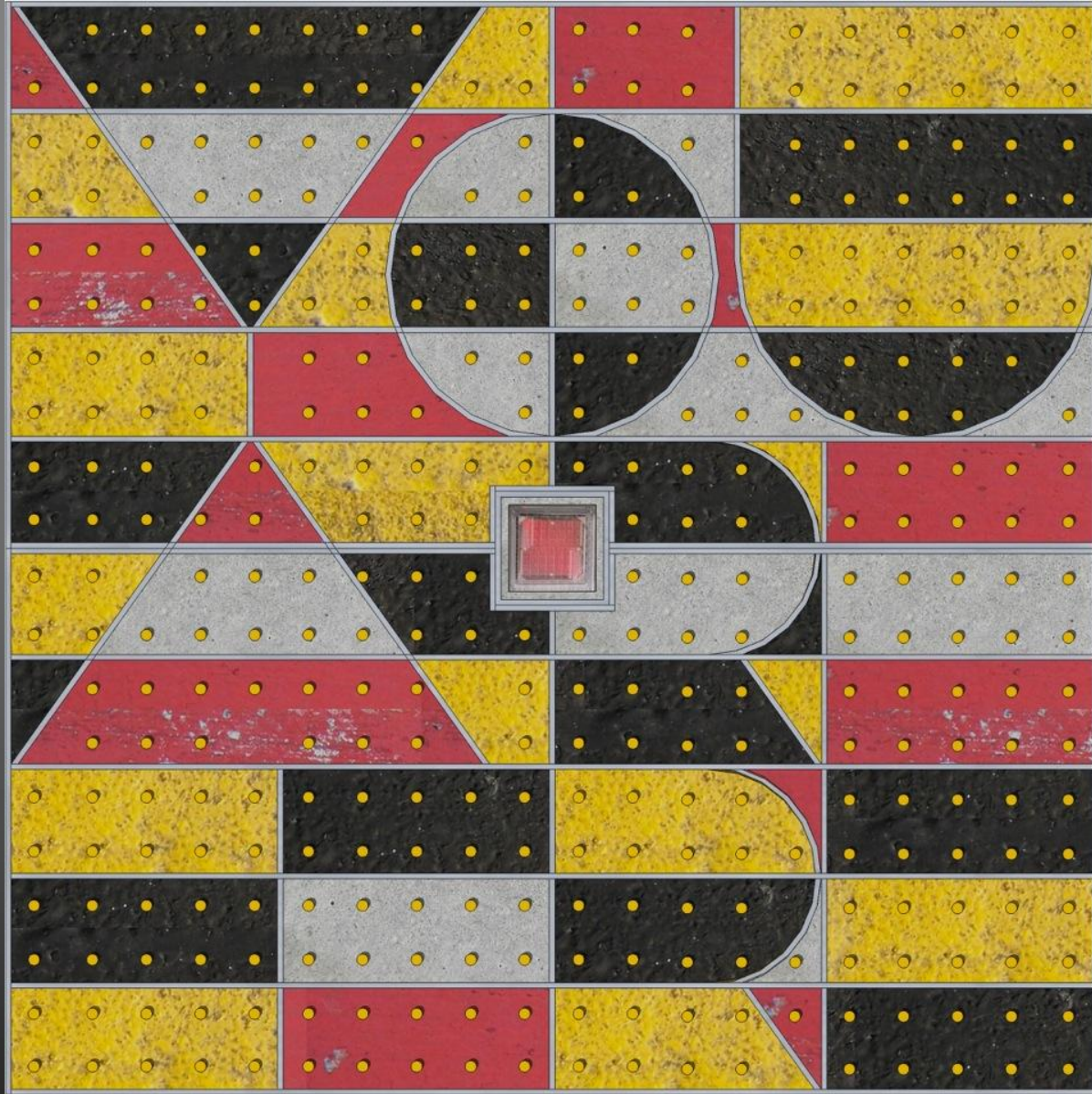
SDOT Sidewalk
Enhancement Program





Sidewalk Enhancement Opportunities:
Colored concrete and metal inlays





You Are Here/Where Are You, sidewalk inlay by John Fleming



Sequence, consequence, SuttonBeresCuller

SDOT 1% for Art Funds



toolkit: art objects

Cloud Haiku, Nickolus Meisel

SDOT 1% for Art Funds



Mercer Ave. Proposed 1% for Art Project, Ellen Sollo



Vicki Scuri, *Sail Light Armatures*,
Galer Street Flyover



Kurt Kiefer, *Second Avenue Project*

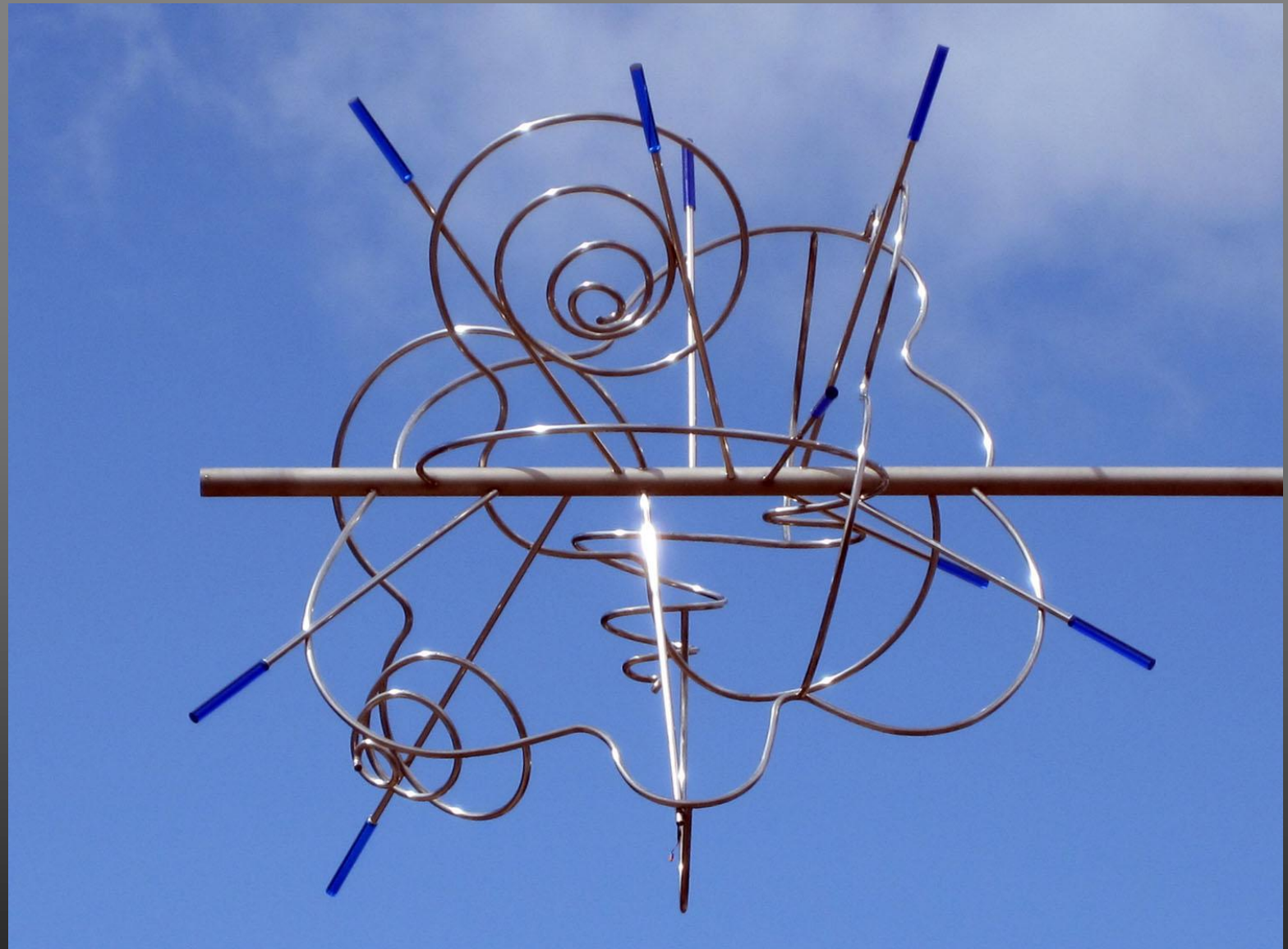
toolkit: art poles



Flip Books, Jen Dixon, Interurban Trail



Chief Sealth Trail Proposed 1% for Art Project, Dan Webb



Cloud Chamber, Laura Haddad and Tom Drugan
5th Ave. Streetscape next to Hubbard Homestead Park
SDOT and Parks collaboration



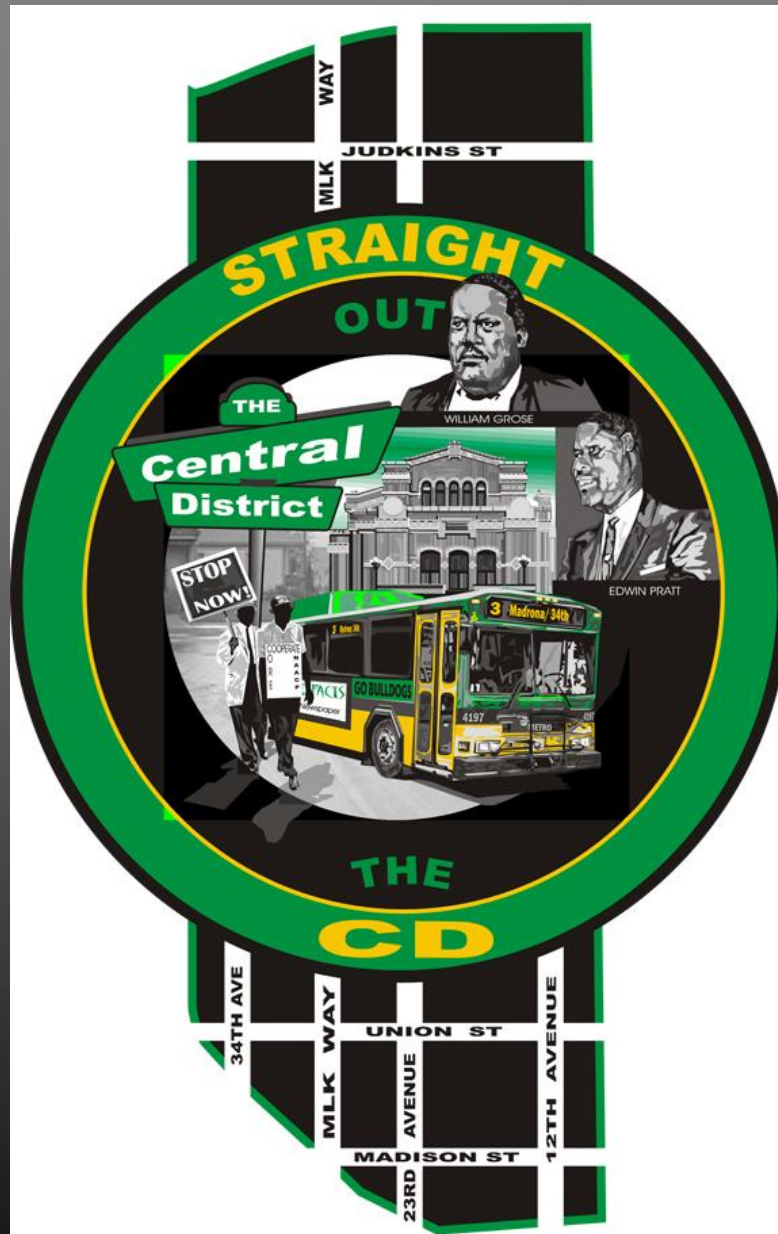
Mobilize the Signal Cabinets, Rainier Ave. Signal Box Decals

Anne Stevens

toolkit: signal cabinets

*Central District Signal
Cabinets Decals*

Troy Miles

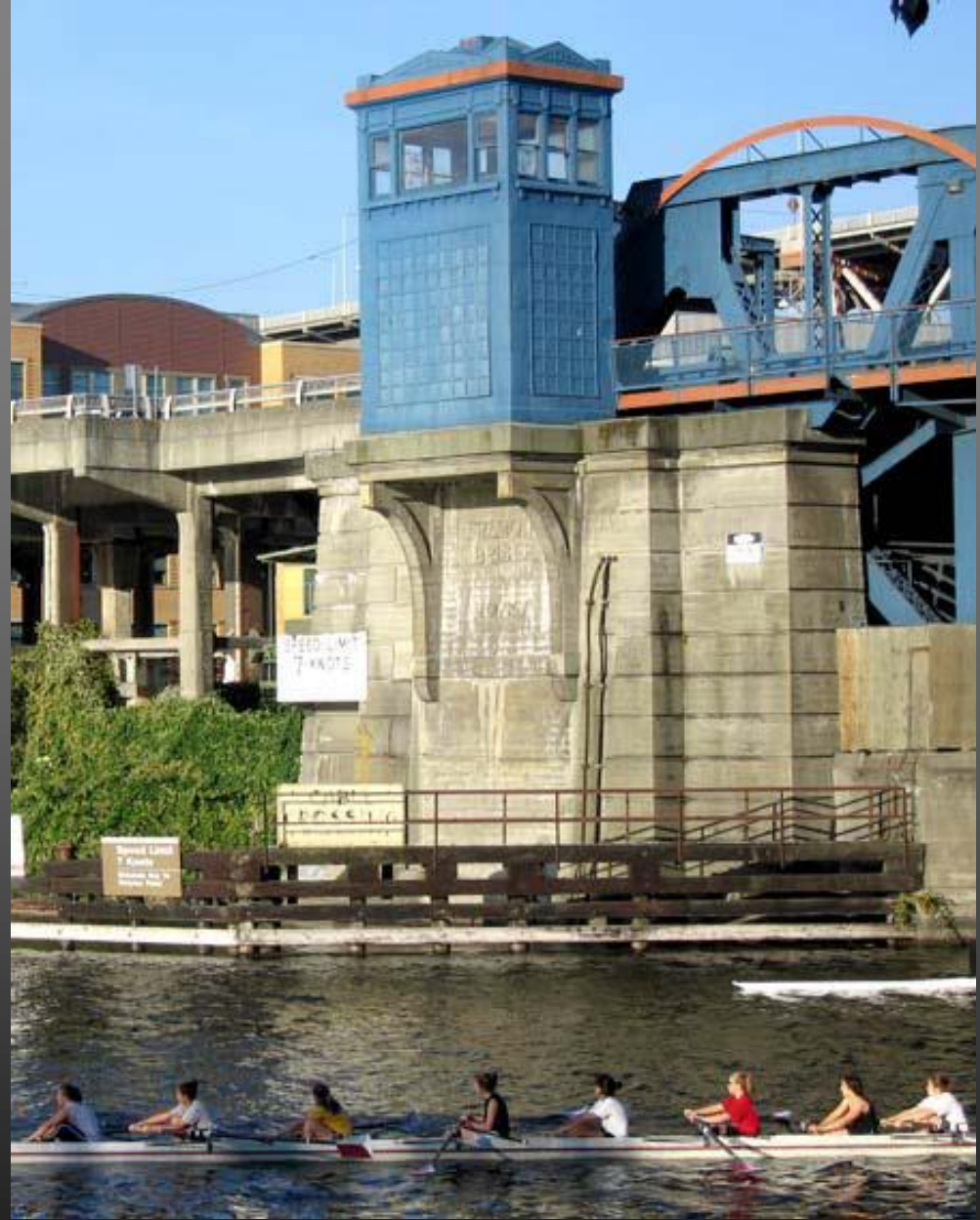




Special Projects
Implementation:

Artist in Residence
in the
Fremont Bridge Tower

Residency began spring 2009



toolkit: special projects



Temporary Projects:
Fremont Bridge Artist in Residence
Bridge Talks Back
Kristen Ramirez
SDOT 1% for Art



ART PROJECT AND CELEBRATION
Commissioned with the Seattle Department of Transportation 1% for Arts funds and administered by the Seattle Office of Arts & Cultural Affairs.

SEATTLE **ON** THE WASHINGTON

FREMONT
BRIDGE

BRIDGE TALKS BACK

26 SEPT. 26
2009

1:00 TO 4:00

HOW IT WORKS + INFO JACQUES POTRINEZ.COM

More Upcoming Art Projects:

Linden Ave. N Complete Streets

First Hill Streetcar

Burke Gilman Trail

Mercer West

Central Waterfront Art Planning

King Street Station Plaza Temporary Art Project

Thomas Street Pedestrian Bridge

Enhancements on Maynard Greenstreet NSF Project

and other art planning in progress...

Art Plan: Strategies for Implementation

- Complete streets checklist
- Right-of-way improvements manual
<http://pan/transportation/rowmanual/manual/>
- Municipal art plan
- SDOT Arts Program Manager staff position
- Presentations and information provided to all SDOT staff especially project managers
- Advocacy from Seattle Design Commission
- Client assistance memos for community-generated projects
http://www9.seattle.gov/transportation/stuse_signalboxart.htm
- Inter-departmental collaboration



+



- Enhance the pedestrian experience
- Make lively, pleasing streetscapes and trails
- Create places with meaning for local communities
- Develop neighborhood identity
- Encourage sustainability by focusing on quality urban experience for pedestrians and cyclists
- Create beautiful transportation infrastructure

“The goal is to create greater meaning in the lives of citizens by inviting artists to contribute in the making of the future Seattle right-of-way.”

- SDOT Art Plan

The SDOT Art Plan can be found at
<http://www.seattle.gov/transportation/artplan.htm>

SDOT Art and Enhancements Program Manager:
Vaughn Bell
Vaughn.Bell@seattle.gov
206-733-9960