

Midvale Stormwater Facility

Seattle Public Utilities

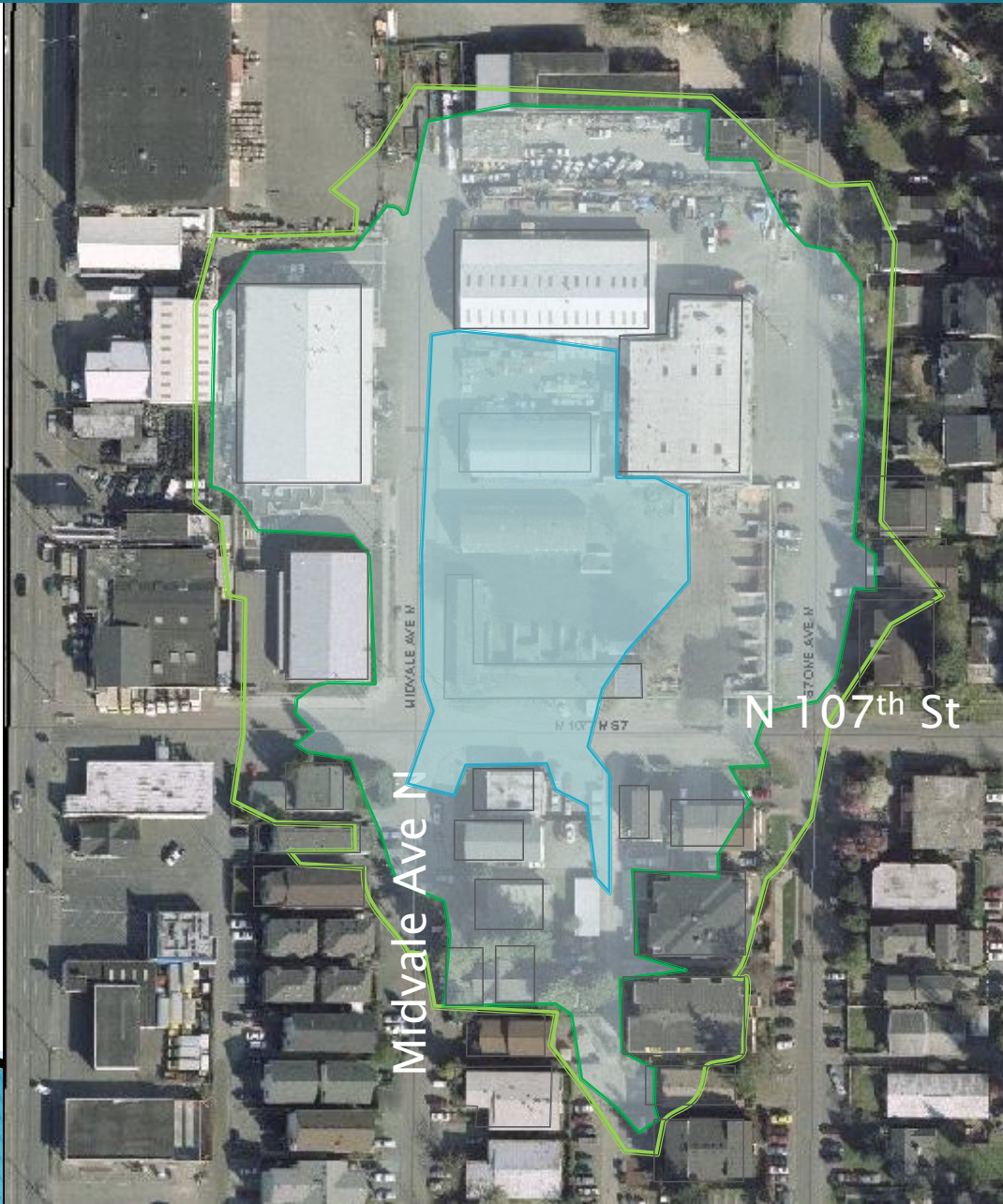
Design Commission Meeting #3

90% Design Review August 2011


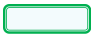

N 107th St & Midvale Ave N. Study Area



Existing Conditions - Flood Prediction Map



Storm

	10-yr
	50-yr
	Dec 07

December 2007 Flood Photos



N 107th St between Midvale Ave N
and Stone Ave N



SE corner of Midvale & N 107t St

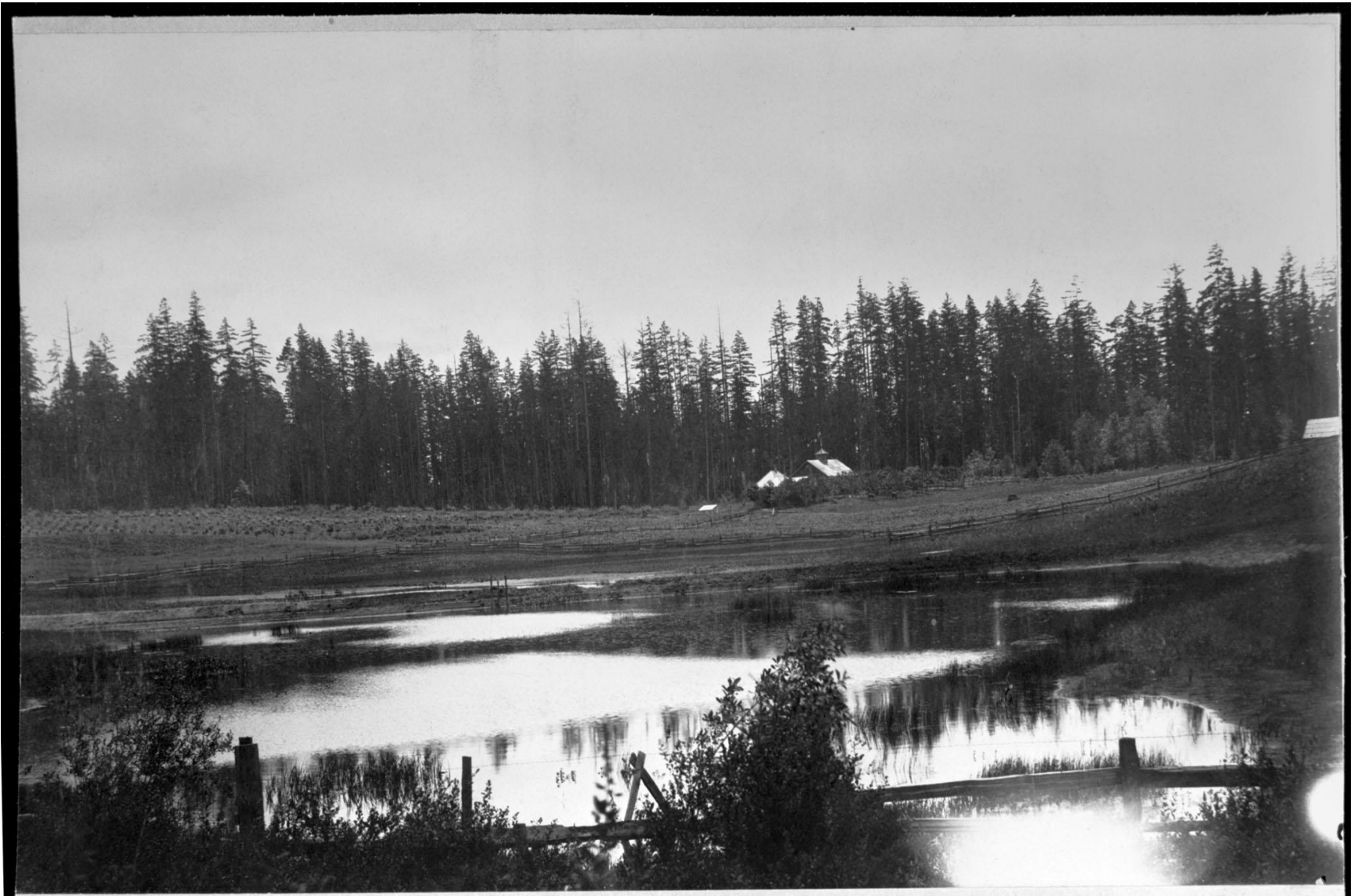
December 2010 Flood Photos



Apartment building
almost flooded

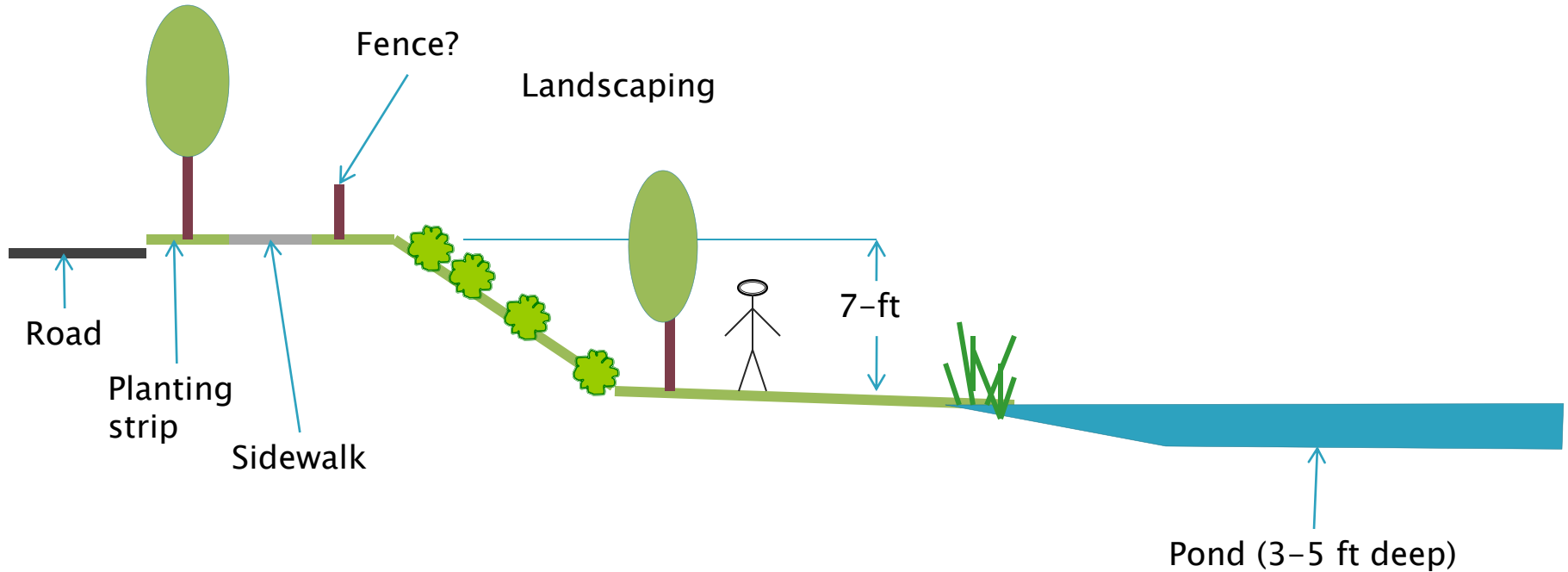


Residents filling sandbags &
Surcharging maintenance holes



Oak Lake - 1897

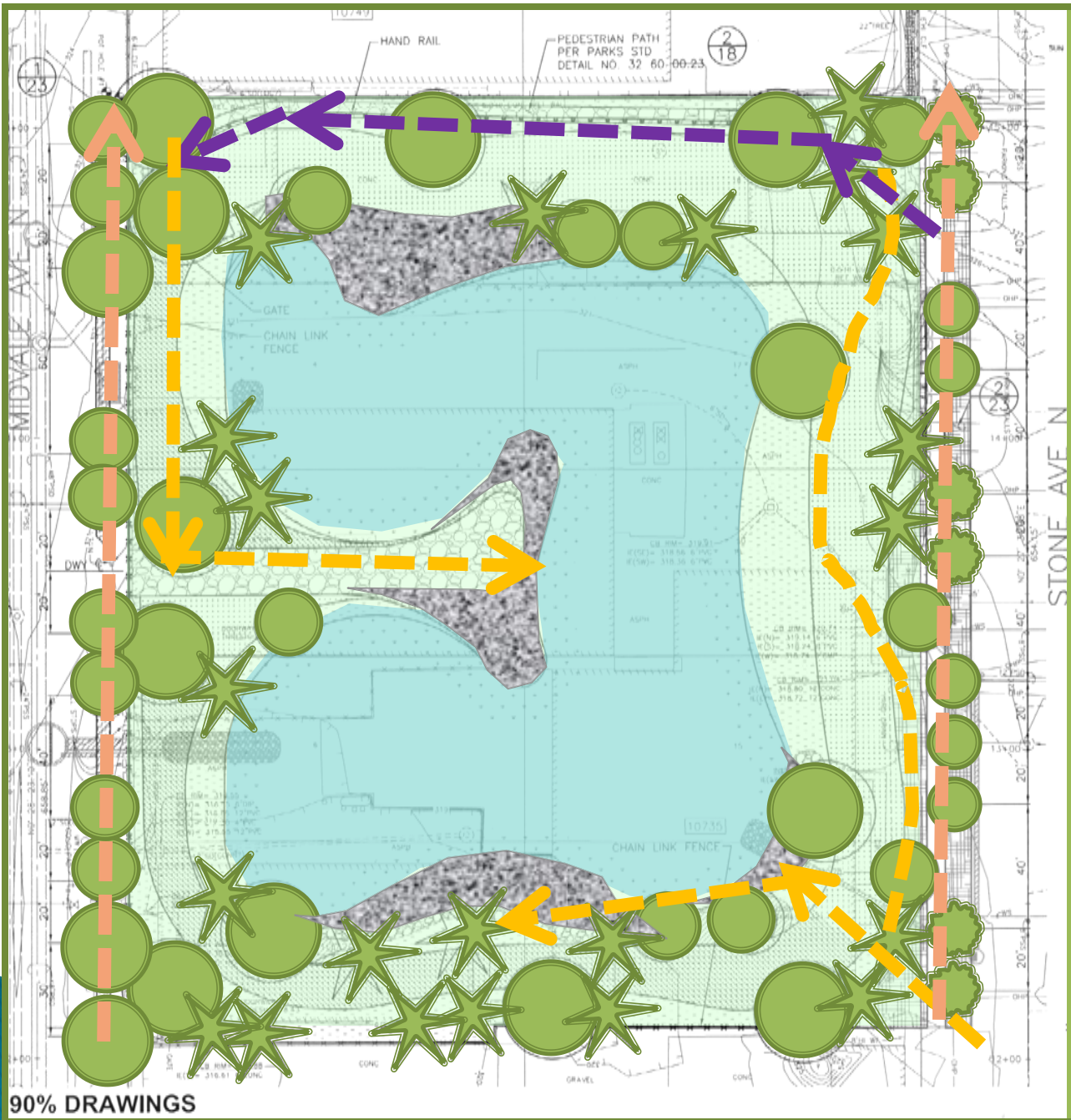
Cross-section



During very large storms, the facility can temporarily fill 7-ft deeper.

Pedestrian Flow

- Sidewalks
- Gravel Trail
- "Boot path"

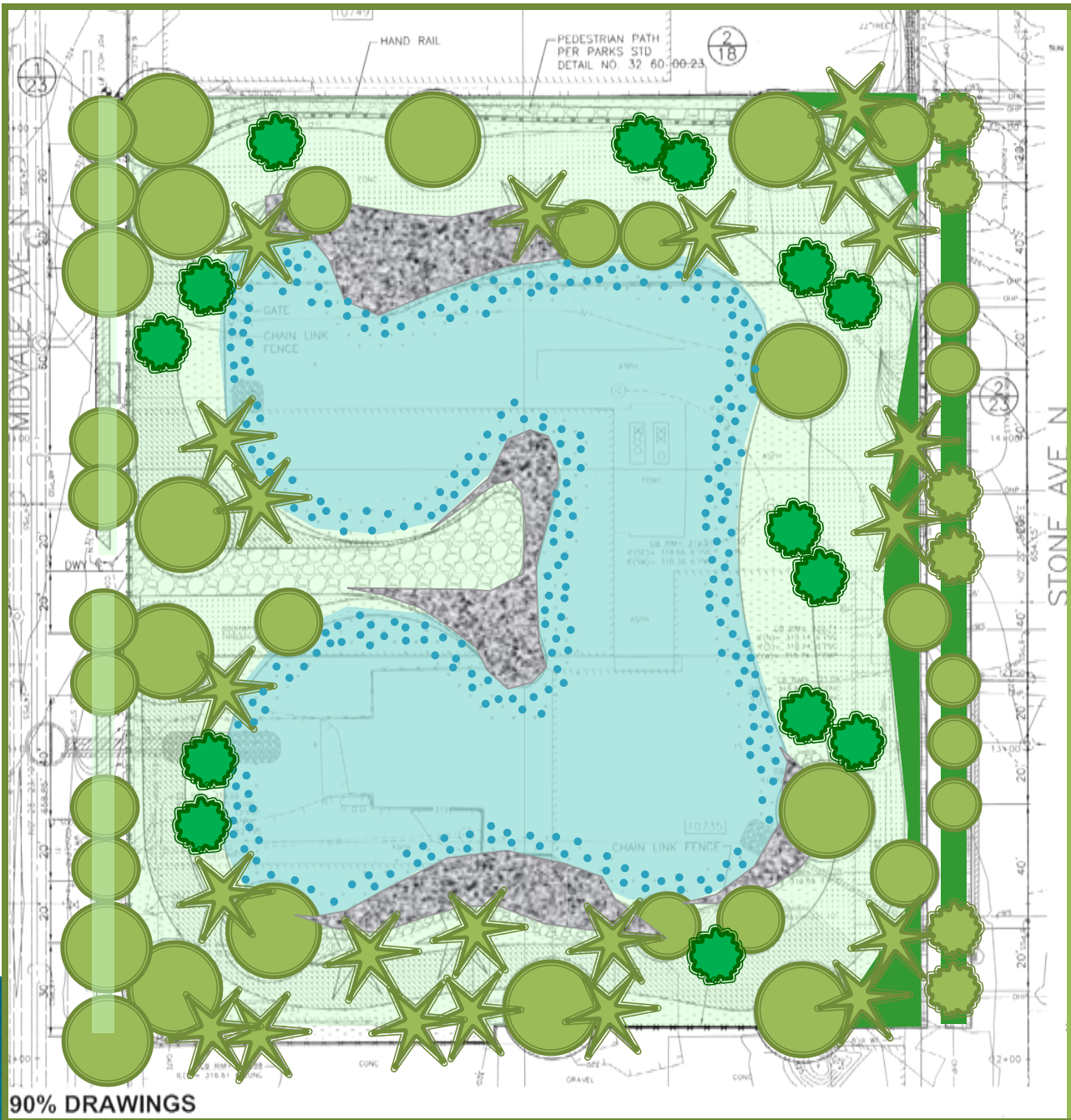


90% DRAWINGS



Proposed Stormwater Facility

Landscape



Trees



Mowed Grass



Wetland Plants



Low shrub groups
–dogwood, red
currant, hydrangea,
vine maple



Low vegetation
–salal, sword fern,
kelsey dogwood,
geranium, iris



River rock "beach"

Starlight Dogwood



David's Maple



Stone Ave (residential side) w/ grass

Black Maple



Midvale (industrial side) w/ ground cover/ low shrubs

Italian Oak

Coast redwood



Western hemlock



Shore pine



Bald cypress



Tupelo



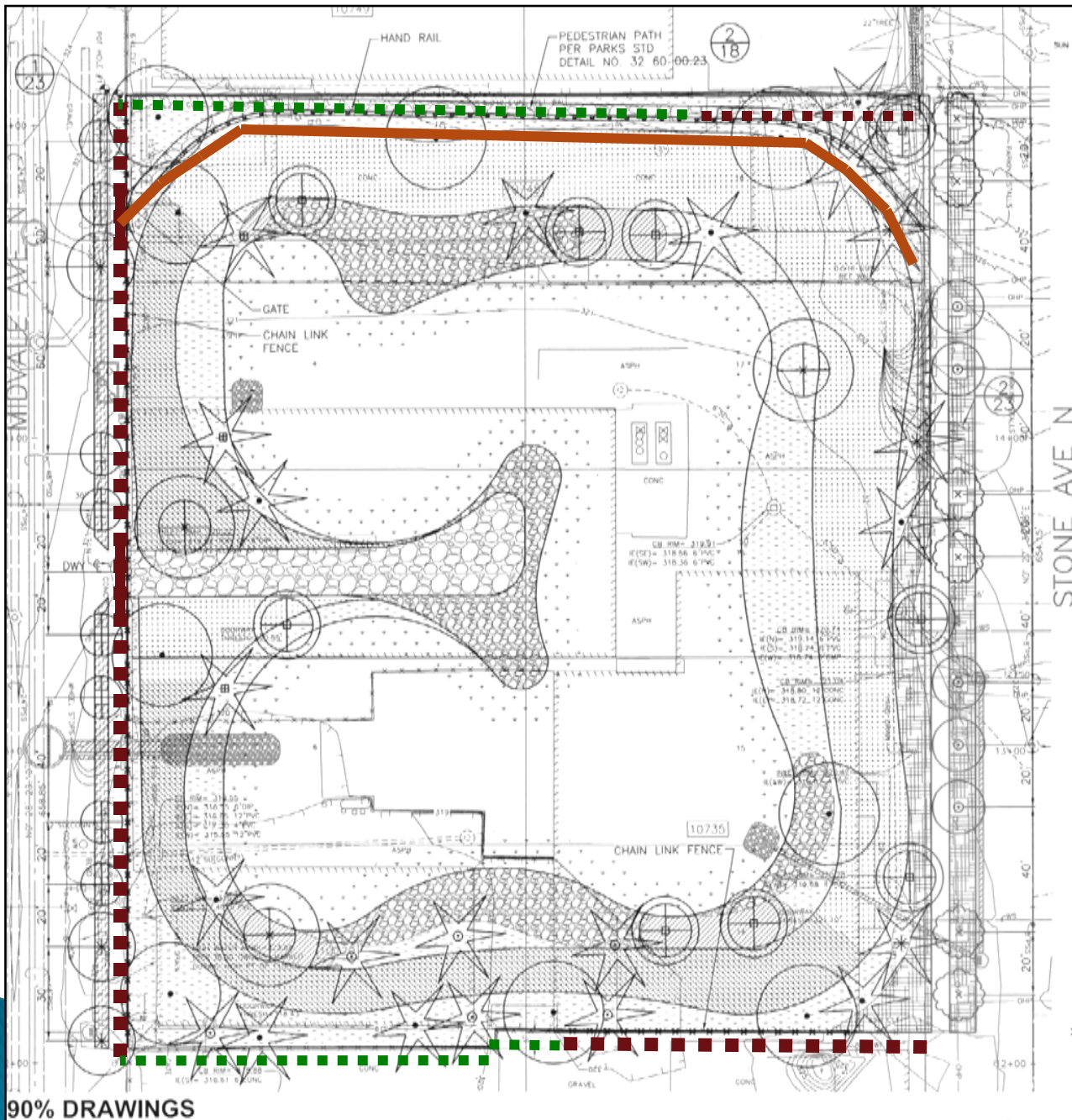
Oregon Ash



Sugar Maple



Fencing



- Proposed 6-ft black vinyl chain link fence
- Gates
- Proposed hand rail
- Existing chain link



Public space fence = black vinyl chain link



01/01/2005



05/01/2011



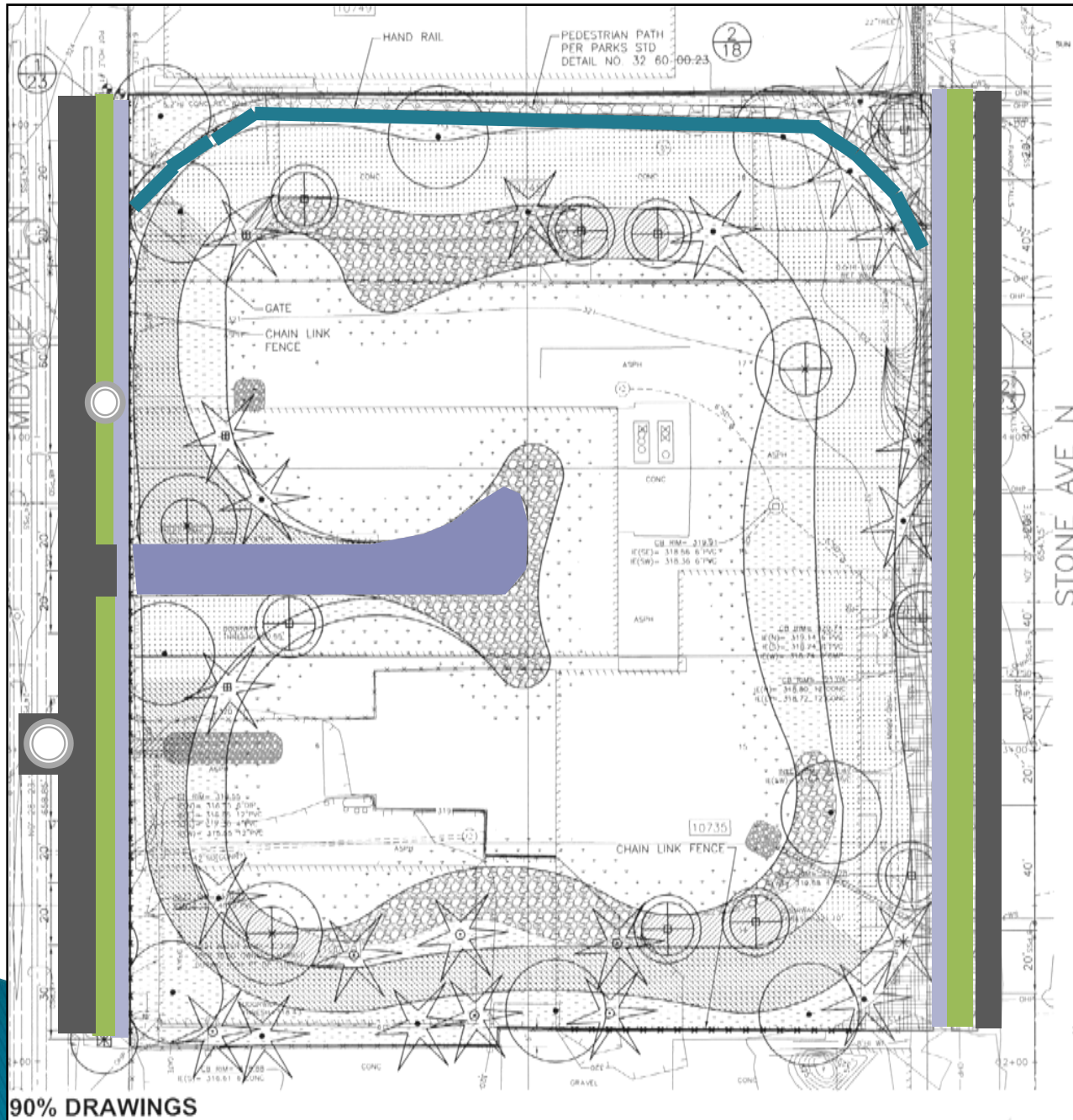
Hand rail options



01/01/2005

Roadway/ Walkway

- Proposed gravel path
- Proposed sidewalks
- Planting Strip
- New Pavement
- Grass-crete

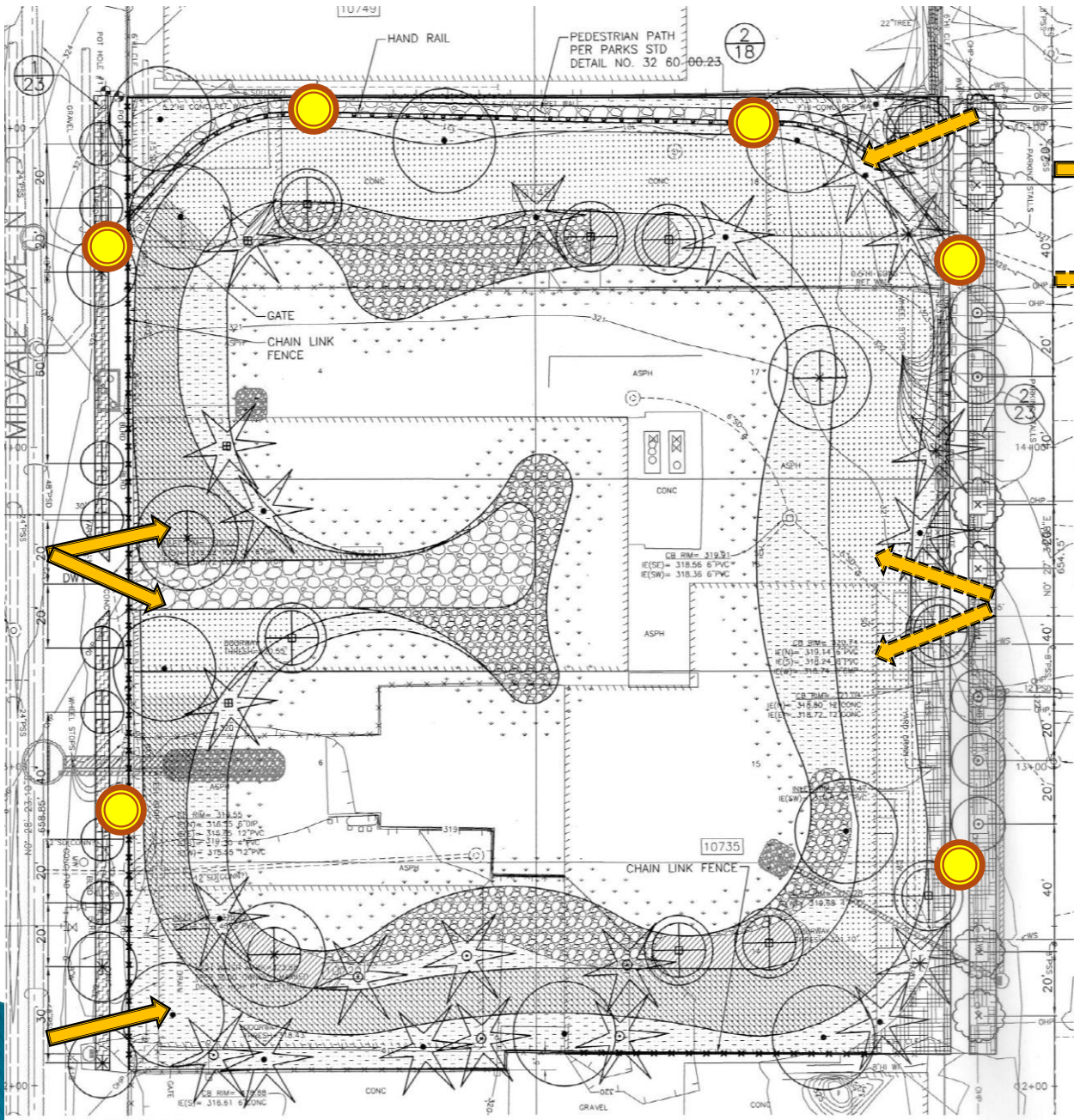


Lighting

Existing flood light

Proposed flood light

Proposed pedestrian light



Landscaping



It takes a year or so for the wetland plants to be firmly rooted and start to fill out.