

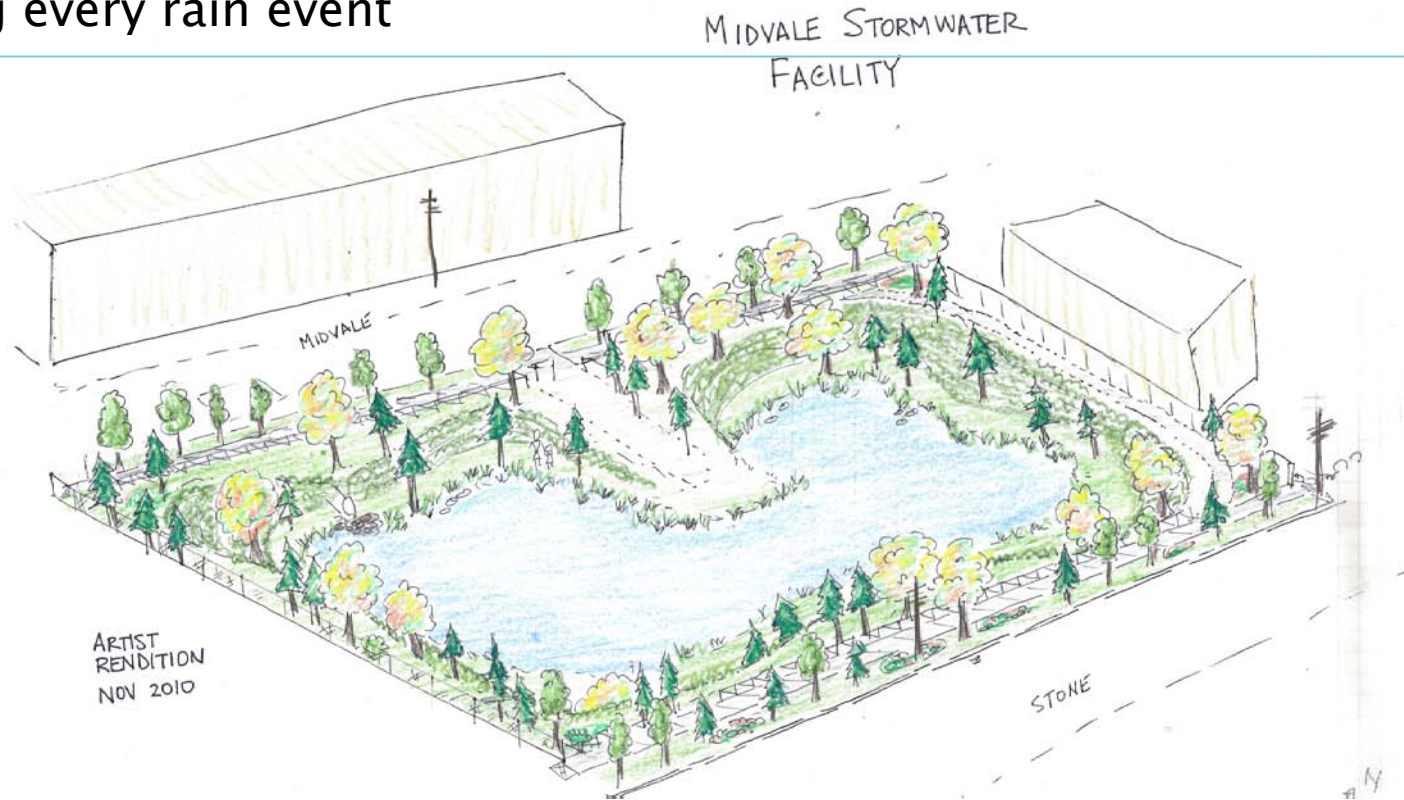
Midvale Stormwater Facility

Seattle Public Utilities

Design Commission Meeting #2
60% Design February 2011

Construct a stormwater facility that will:

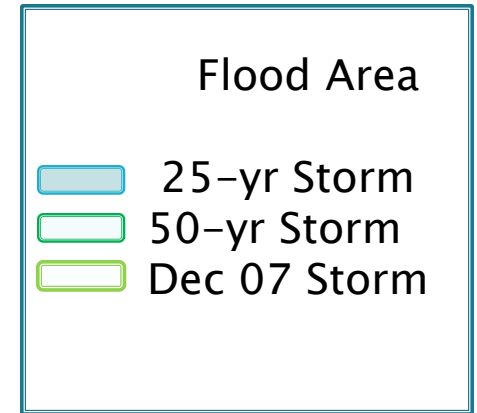
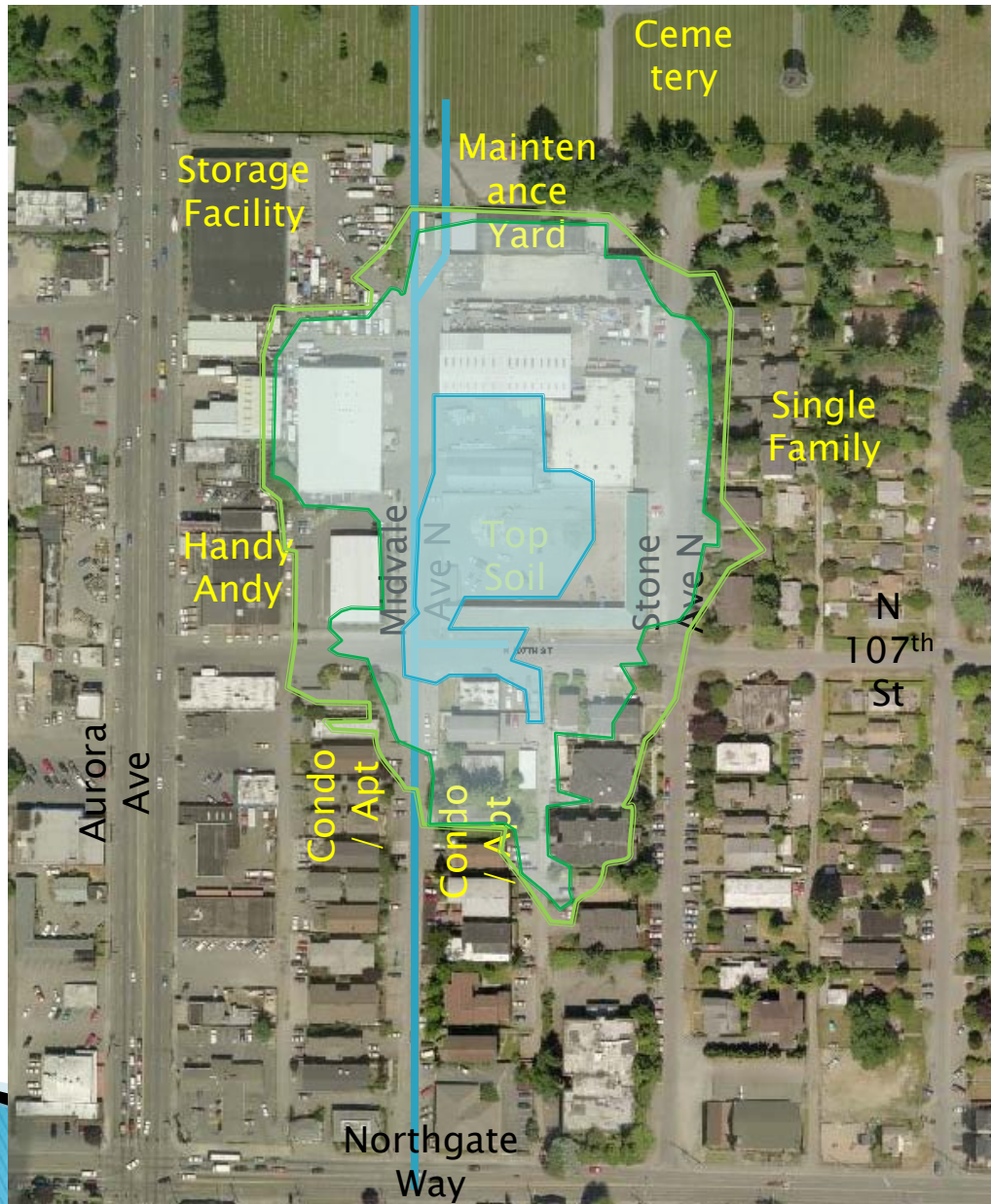
- Hold up to 3 million gallons of stormwater during heavy storms to up to the 25-yr storm event
- Help reduce the potential for flooding from the combined system and public roads to homes and businesses.
- Provide water quality treatment for small storm flows (1-2 cfs) during every rain event



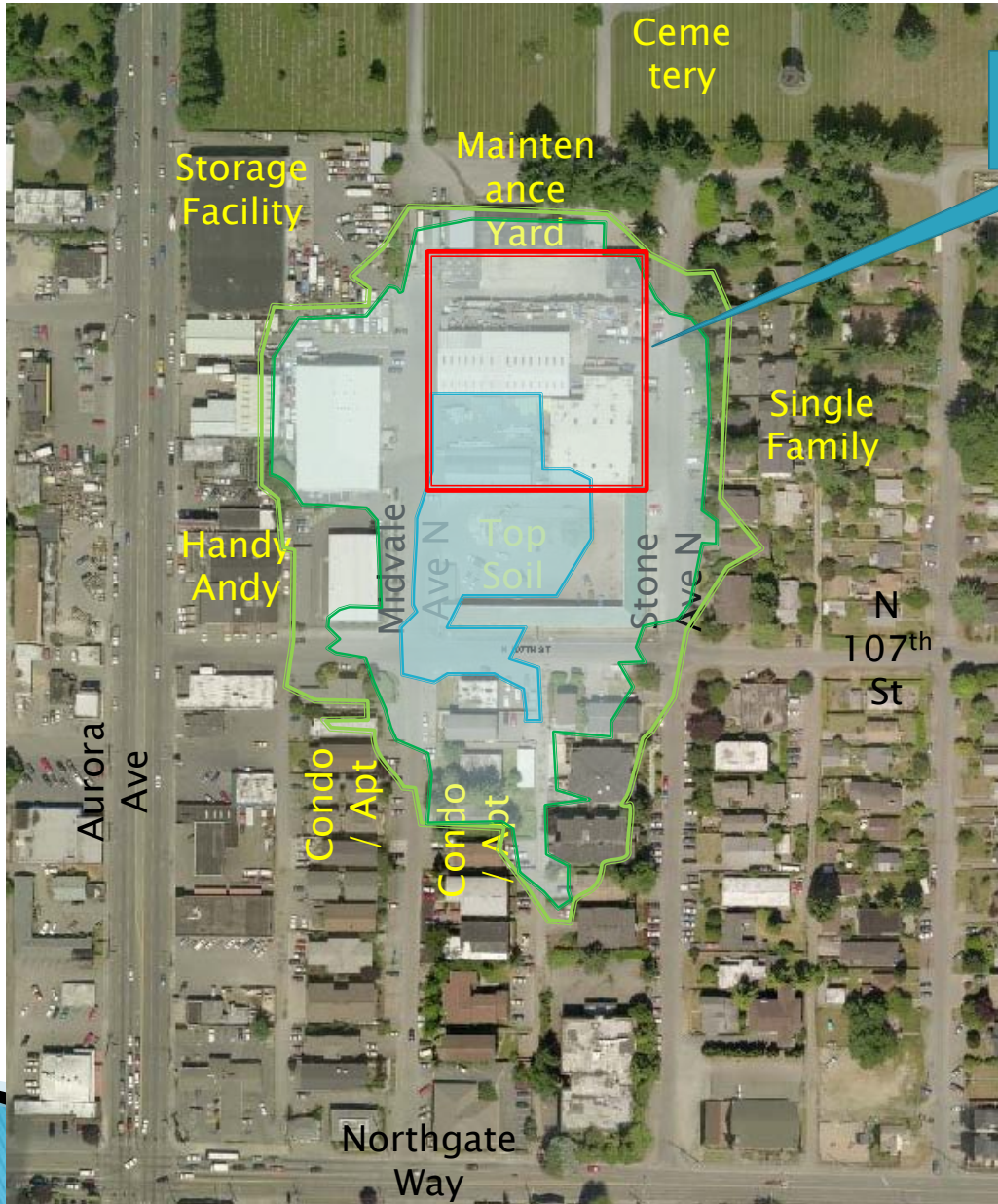
N 107th St & Midvale Ave N. Study Area



Close up of Flood Prone Area



Storm drain



Proposed Stormwater Facility

Goal:
Prevent street/
property damage
from floods by
temporarily storing
water in stormwater
pond.

December 2007 Flood Photos



N 107th St between Midvale Ave N
and Stone Ave N



SE corner of Midvale & N 107t St

December 2007 Flood Photos



Daylight basement apartments
On Midvale south of N 107th St

Intersection of Midvale & N 107th St



December 2010 Flood Photos



Stormwater surging out of inlets



Sandbagging homes



Oak Lake - 1897

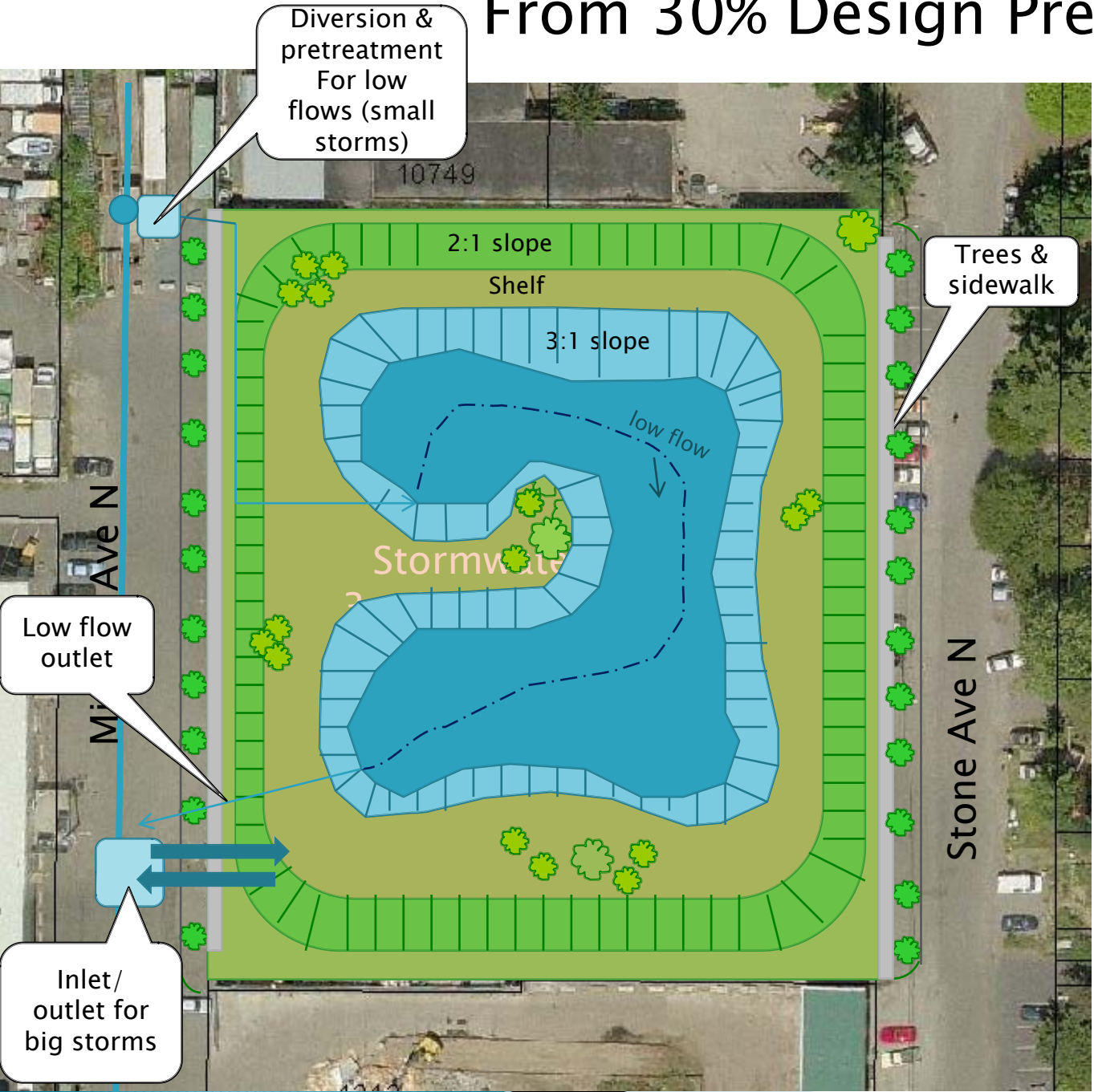
Existing Building at Proposed Stormwater Facility Site



Existing Site Use



From 30% Design Presentation

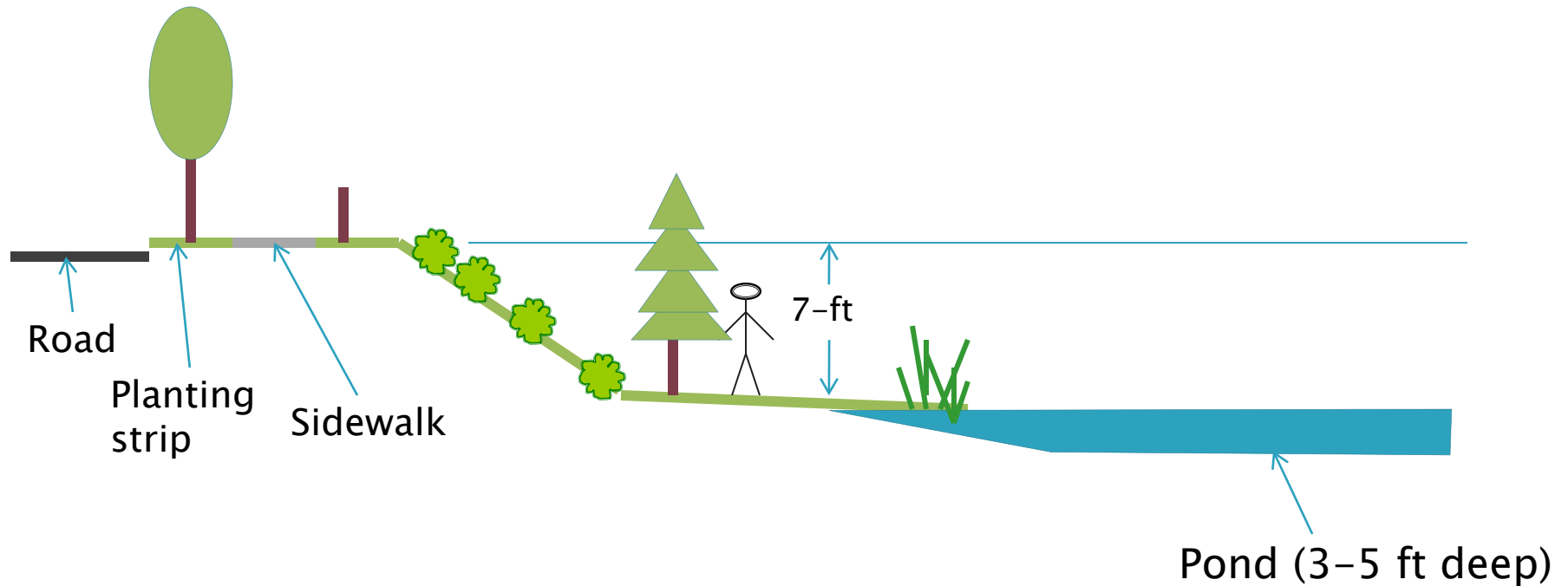


- Flat area grass w/ shrubs
- Sloped area w/ shrubs
- Shallow water
- Deep water (3 ft)

Function: ~1-2x / decade, facility will fill with up to 7-ft of water.

Facility will provide water quality treatment for most storm events.

Cross - Section of Stormwater Facility



During very large storms, the facility will temporarily fill with an additional 7-ft of water over approximately 4 hours.

Ashworth Pond— existing detention pond located ½ mile north



Proposed facility will look more like this photo than Ashworth Pond.



60% Design



Split Rail Fence - along sidewalk/path

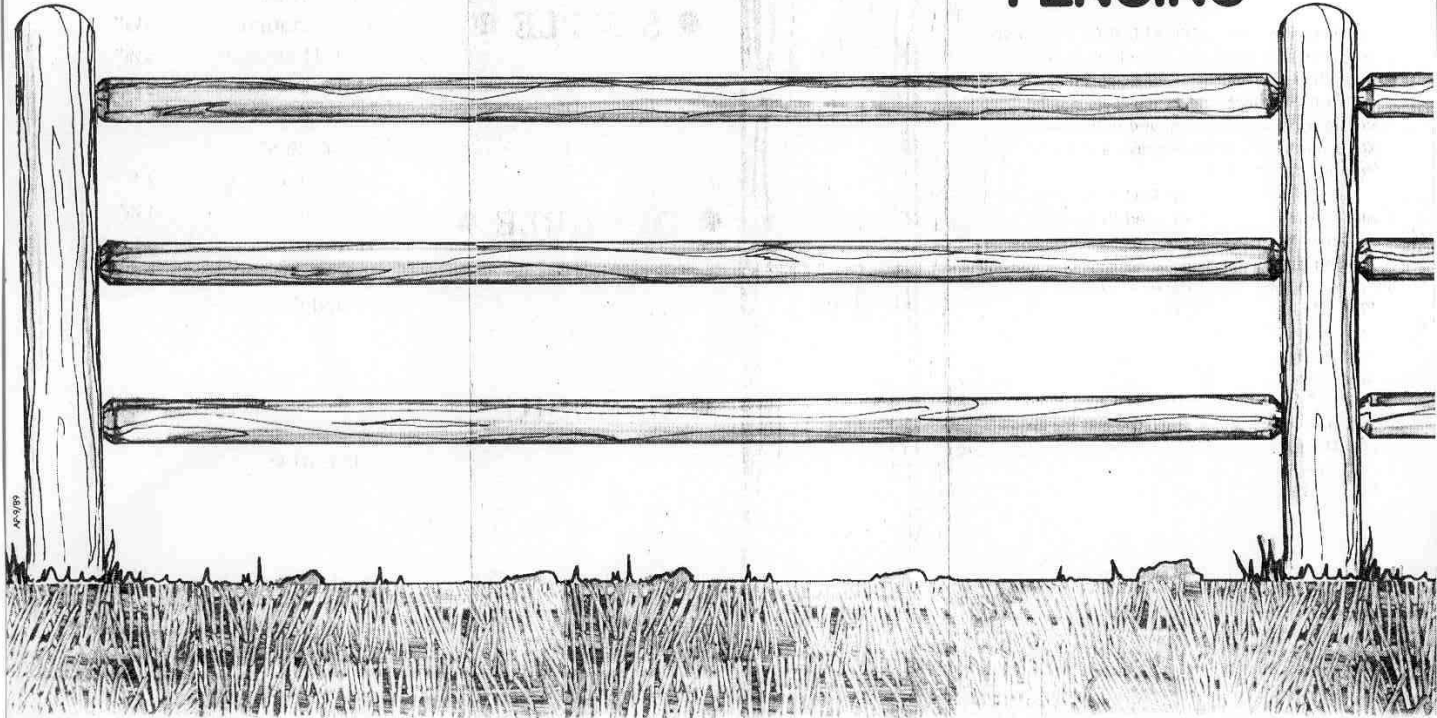
BVC™ BOURBON VALLEY COMPANY
LODGEPOLE PINE PRODUCTS

Distributed By:

DISTRIBUTED BY:
URBAN LANDSCAPE SUPPLIES
Everett, WA 98208-1948
Phone / Fax: (425) 347-5978

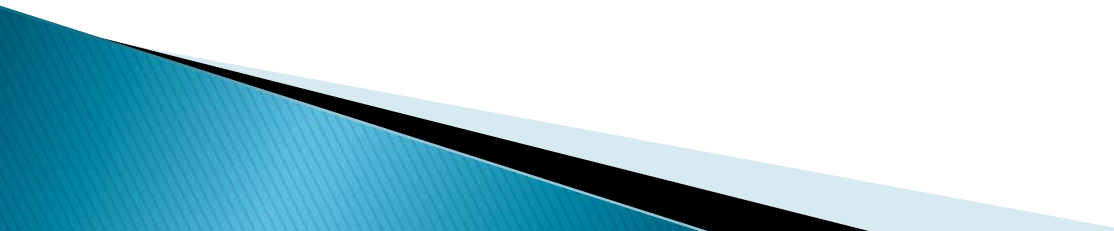
SIMPLE • CLASSIC • DURABLE

BVC™
DOWELED
RAIL
FENCING



AK-1/89

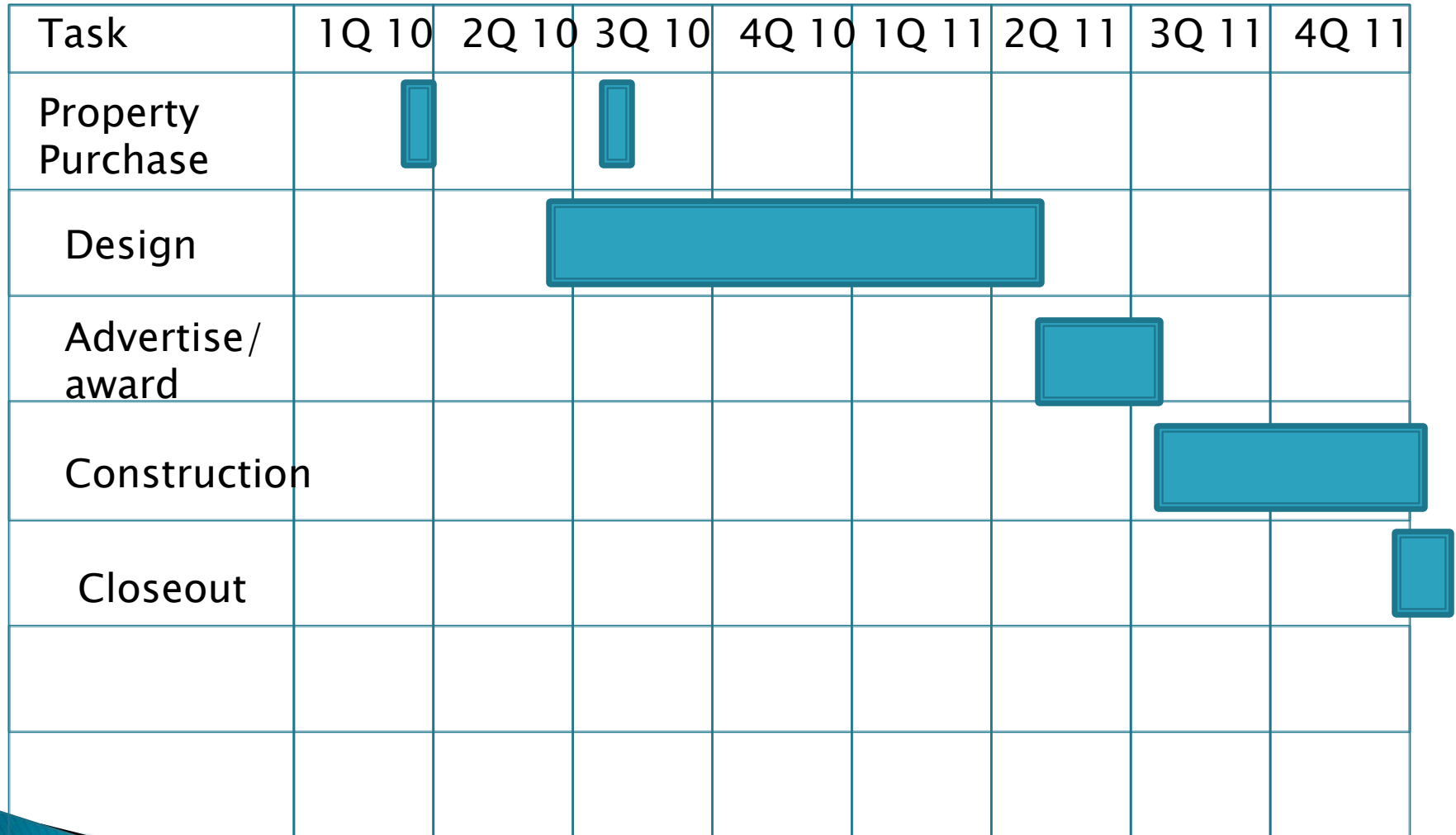
Landscaping

- ▶ Trees: (insert details from Shane)
 - ▶ Shrubs:
 - ▶ Ground cover:
 - ▶ Accent planting:
 - ▶ Wetland plants:
 - ▶ No lawn areas.
- 

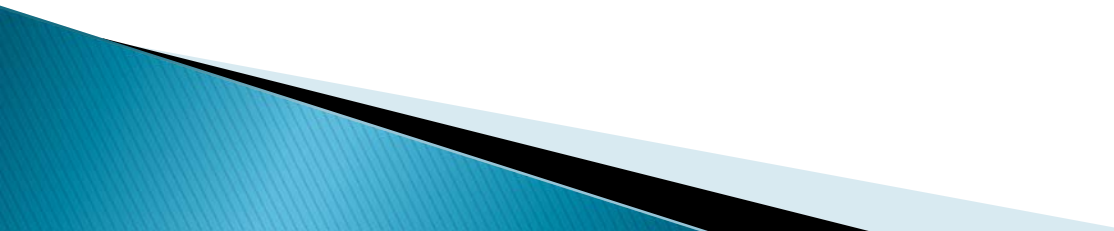
Budget (Feb 2011)

Property	\$5M	(complete)
Design	\$300K	(underway)
Construction (SPU)	\$200K	
Contractor	\$3M	
Contingency	\$1M	
<hr/>		
Total	\$9.8M	

Midvale Stormwater Facility: Conceptual Schedule



Challenges

- ▶ Community view: Can we make this an amenity?
 - ▶ Balance of stormwater detention and open space
 - ▶ Fencing
 - ▶ Adjacency to Aurora Ave and informal “transfer station”
- 

- ▶ FYI – The following slides show “freshly planted” landscapes. I’m not sure if I would use these for Design Commission, but I would want to share them with the Community.









Possible fence option – Stormwater Pond in West Seattle

