

Lower Mapes Creek Restoration and 52nd Ave CSO Conveyance Projects 90% Design

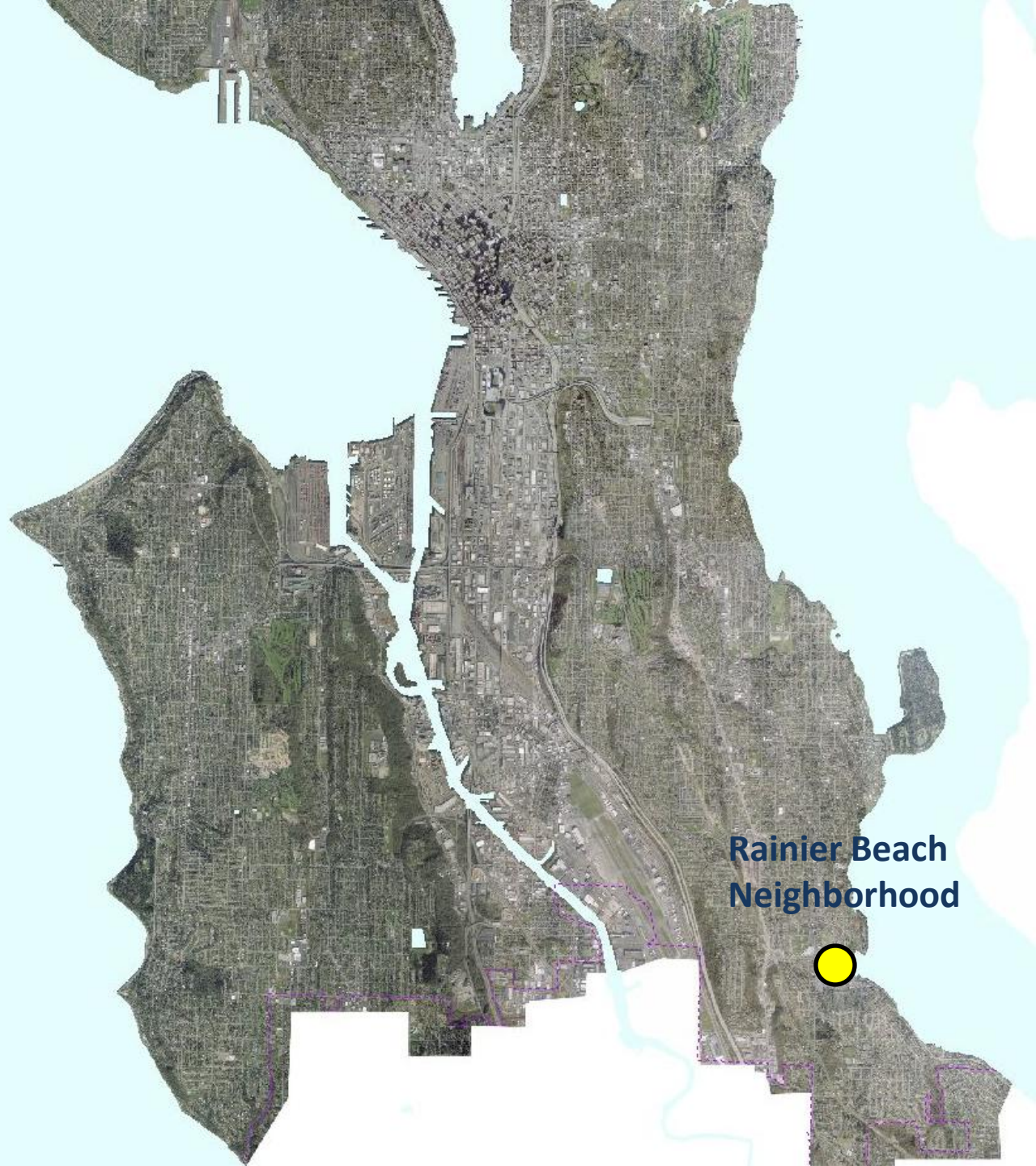


Seattle Design Commission

January 17, 2013



Project Location



**Rainier Beach
Neighborhood**

Project Objectives

- **52nd Ave CSO Reduction**

- Build new pipe conveyance to reduce combined sewer overflows off Beer Sheva Park to regulatory limits.
- Mandated by US EPA Consent Decree and NPDES permit.

- **Mapes Creek**

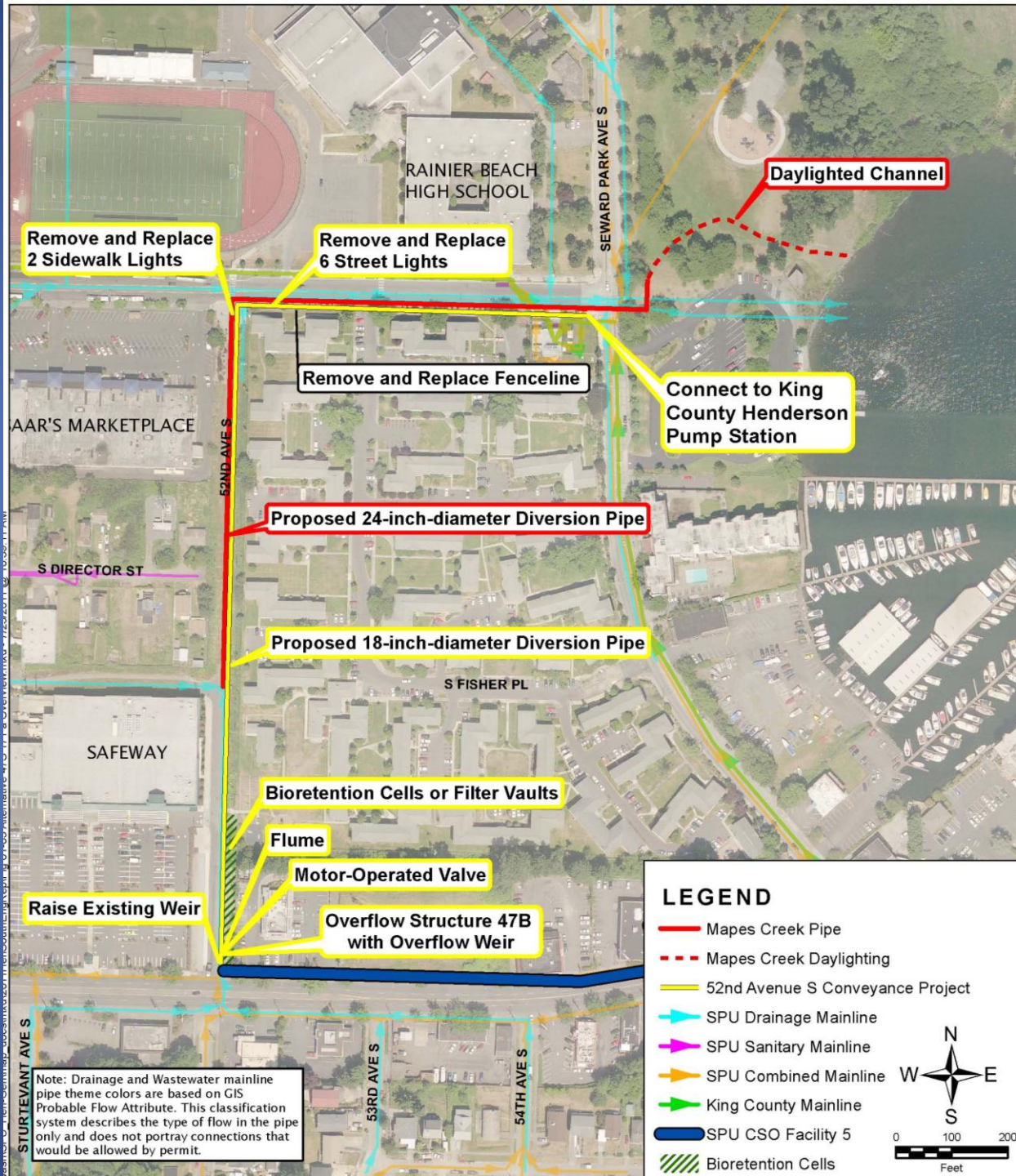
- Improve juvenile Chinook salmon rearing and migration habitat by reconnecting Mapes Creek to Lake Washington.
- Provide an accessible environmental amenity in the Rainier Beach neighborhood.

- **1% for the Arts**

- Beer Sheva Park
- 52nd Ave S Walkway

Lower Mapes Creek Project

52nd Ave S CSO Project

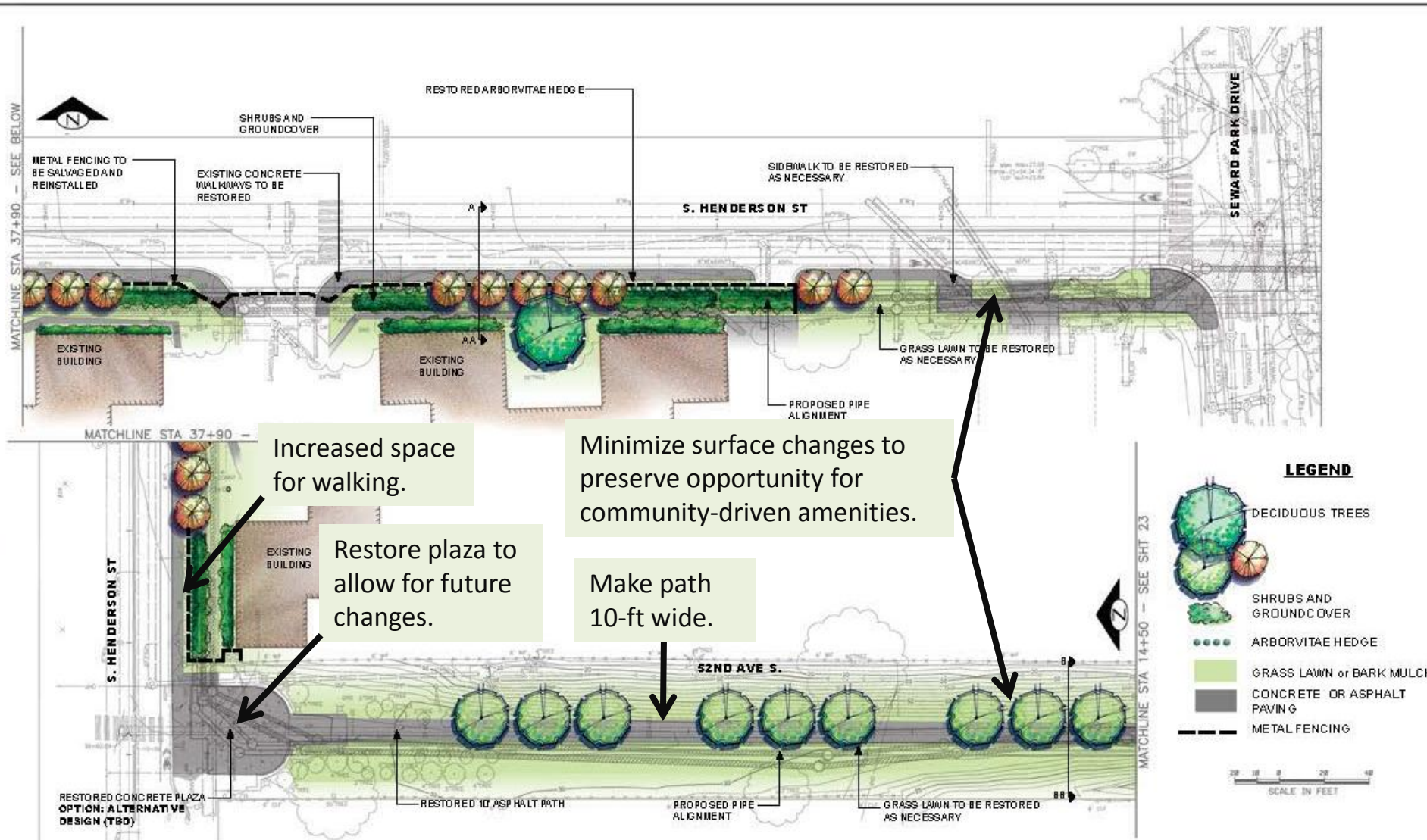


SDC Comments on 60% Design

Key Themes:

- Enhance the upper sideslopes of the walkway berm.
- **Make the creek visible under the walkway.**
- Restore the Plaza at Henderson & 52nd Ave S.
- **Remove fence encroachment along Henderson to provide more space for pedestrians.**
- Integrate the new creek channel within the context of Beer Sheva Park.

52nd Ave S/Henderson – 60% Design



Increased space for walking.

Restore plaza to allow for future changes.

Minimize surface changes to preserve opportunity for community-driven amenities.

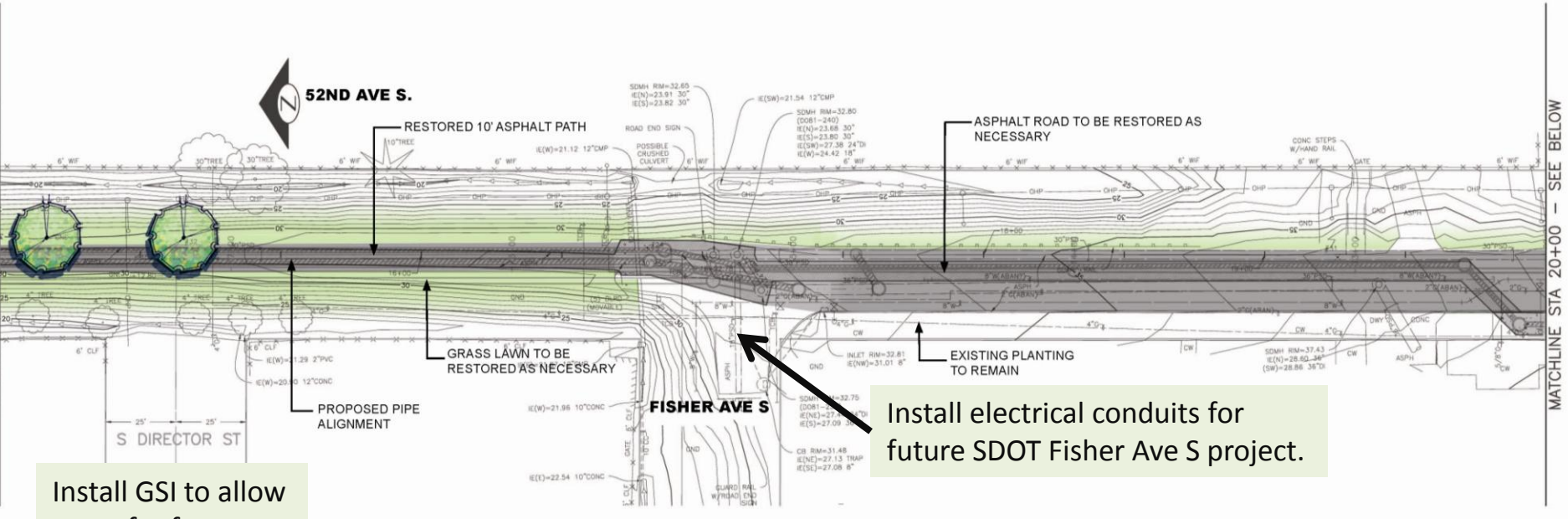
Make path 10-ft wide.

52nd Ave S/Henderson – 60% Design

MATCHLINE STA 14+50 – SEE SHT 19

MATCHLINE STA 20+00 – SEE ABOVE

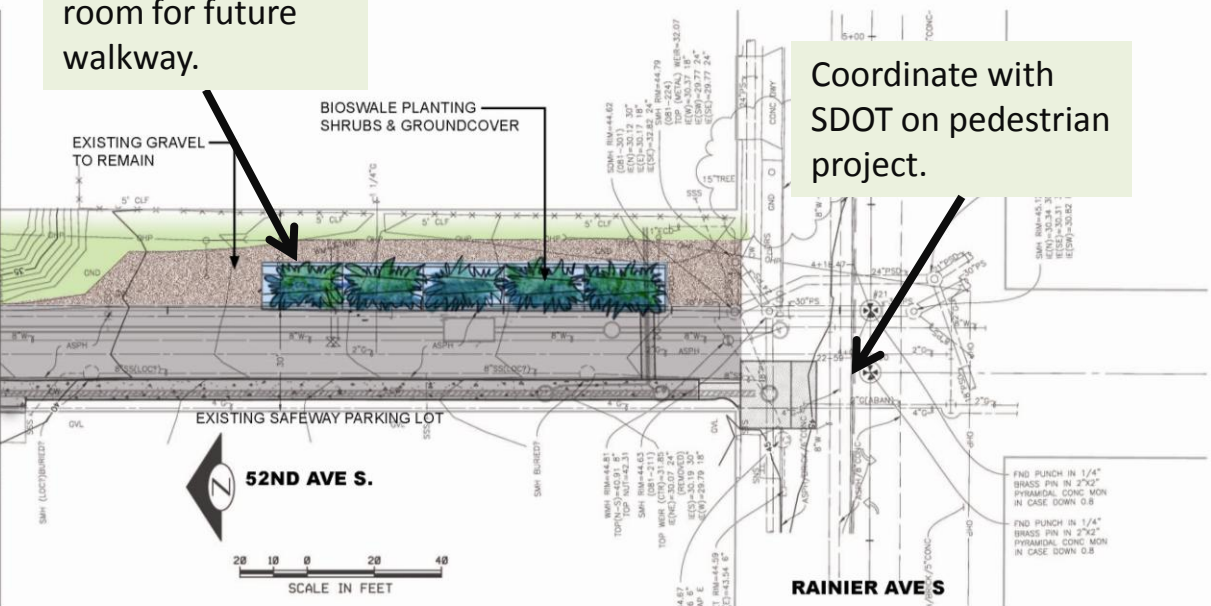
MATCHLINE STA 20+00 – SEE BELOW




Install GSI to allow room for future walkway.

Install electrical conduits for future SDOT Fisher Ave S project.

Coordinate with SDOT on pedestrian project.



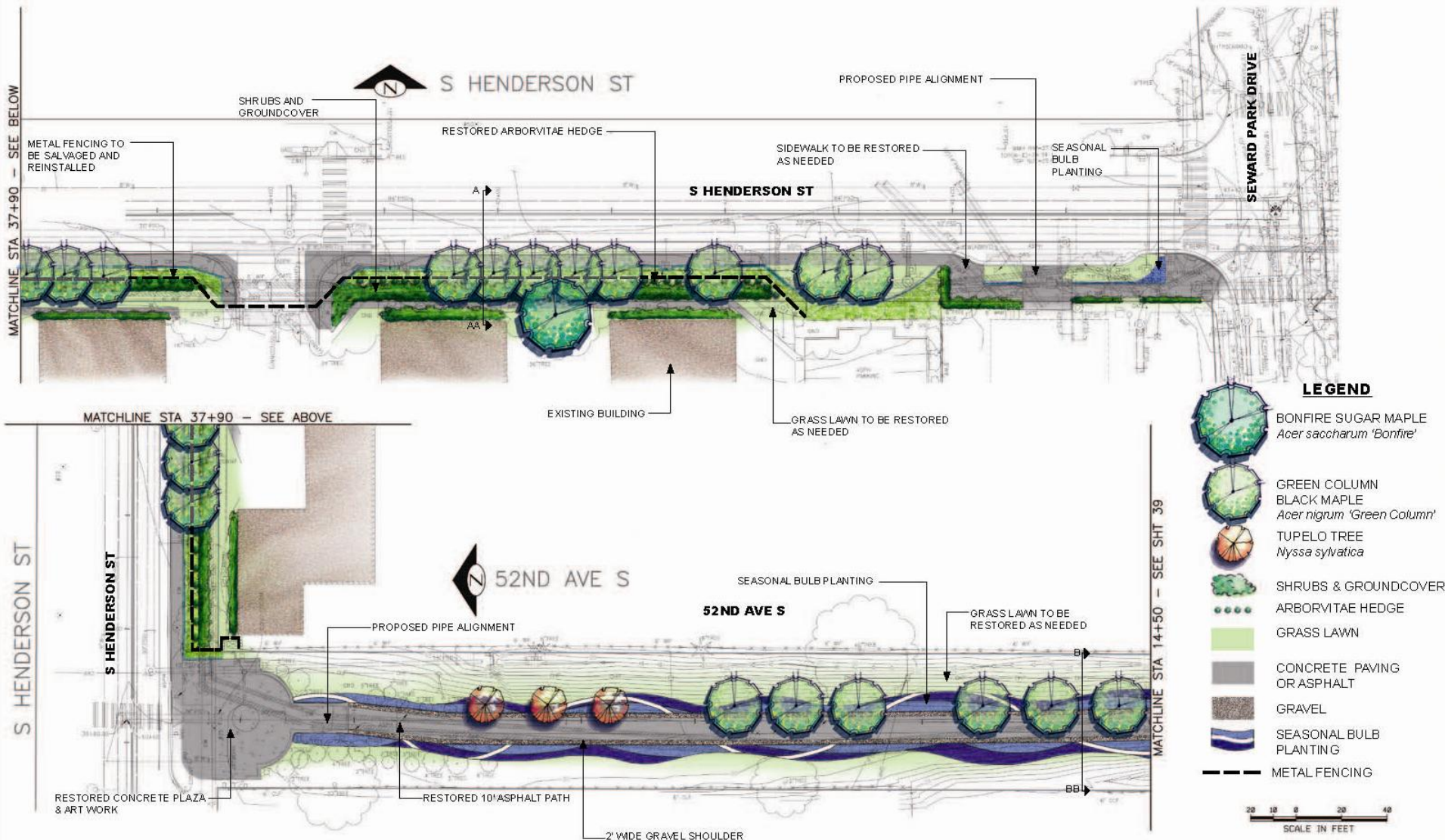
LEGEND

-  DECIDUOUS TREE
-  BIOSWALE PLANTING
-  GRAVEL
-  GRASS LAWN
-  CONCRETE OR ASPHALT PAVING



RAINIER AVE S

52nd Ave S/Henderson – 90% Design

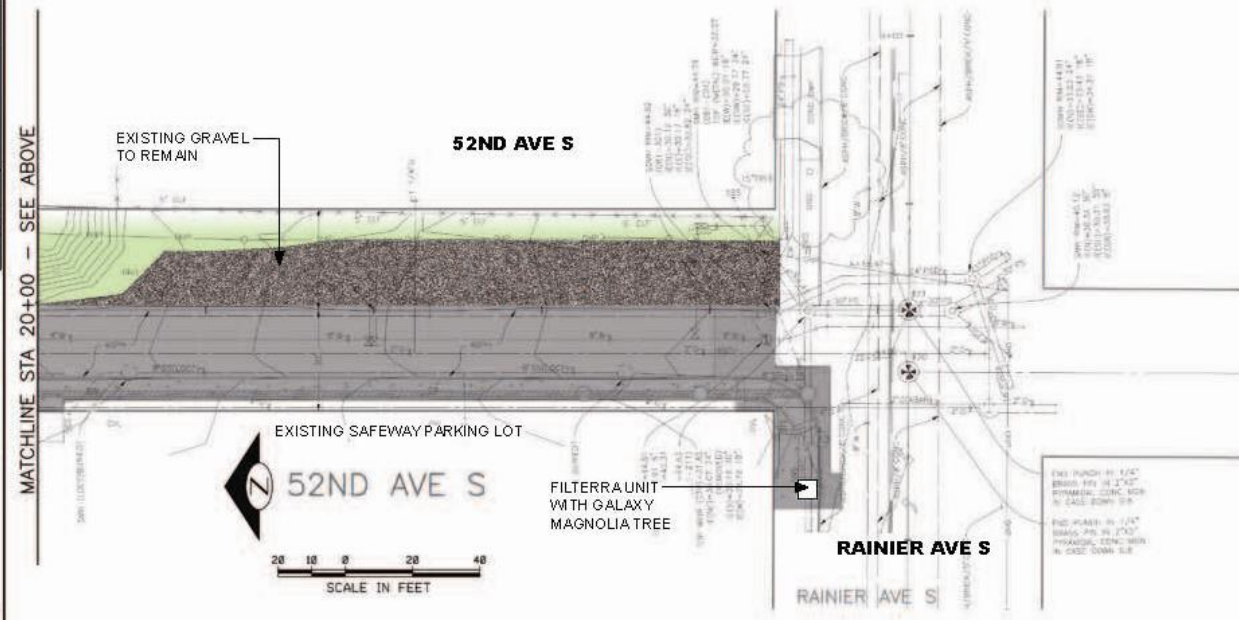


LEGEND

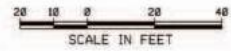
-  BONFIRE SUGAR MAPLE
Acer saccharum 'Bonfire'
-  GREEN COLUMN BLACK MAPLE
Acer nigrum 'Green Column'
-  TUPELO TREE
Nyssa sylvatica
-  SHRUBS & GROUNDCOVER
-  ARBORVITAE HEDGE
-  GRASS LAWN
-  CONCRETE PAVING OR ASPHALT
-  GRAVEL
-  SEASONAL BULB PLANTING
-  METAL FENCING



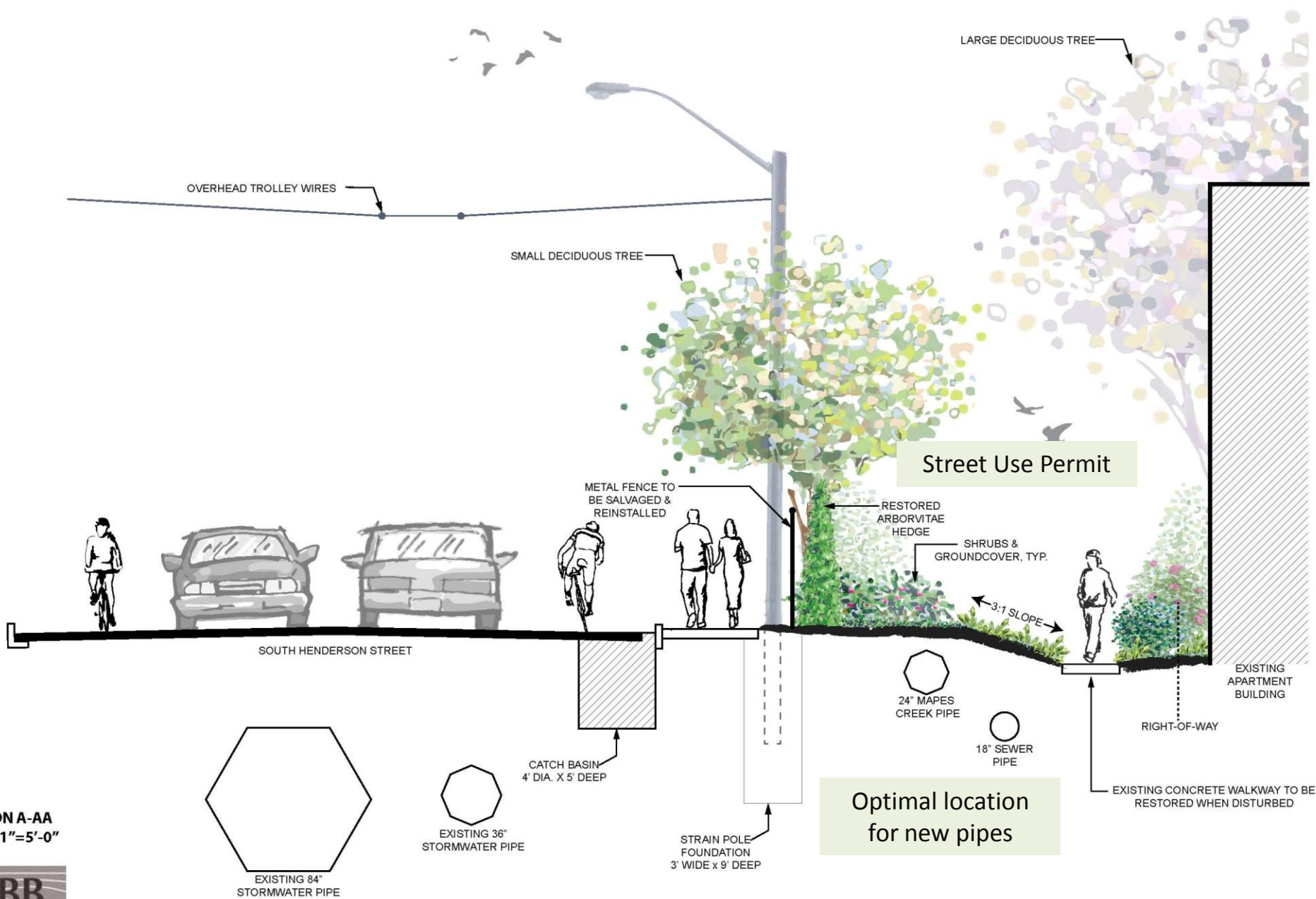
52nd Ave S/Henderson – 90% Design



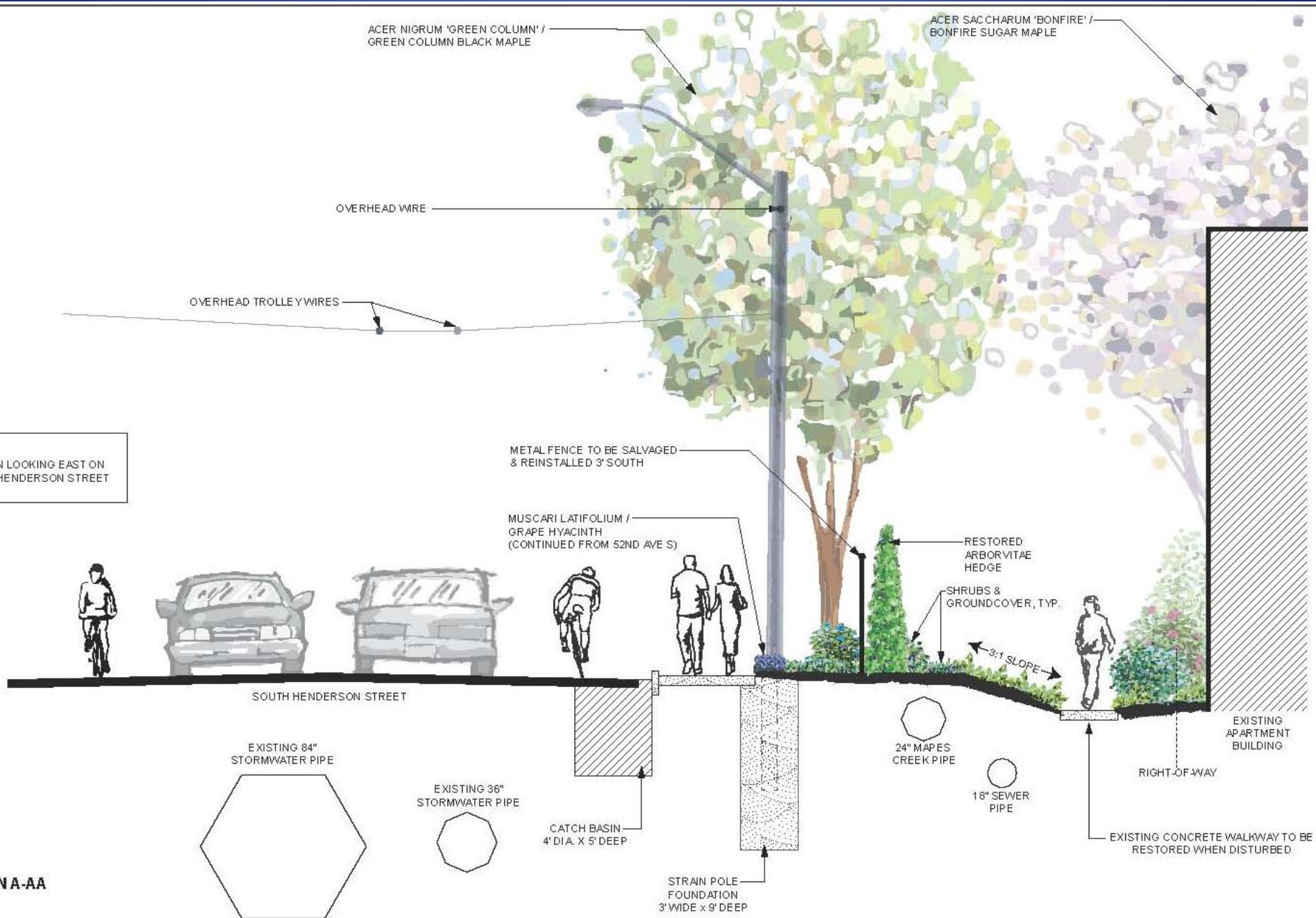
- LEGEND**
-  GREEN COLUMN BLACK MAPLE
Acer nigrum 'Green Column'
 -  TUPELO TREE
Nyssa sylvatica
 -  GRAVEL
 -  GRASS LAWN
 -  CONCRETE OR ASPHALT PAVING
 -  SEASONAL BULB PLANTING



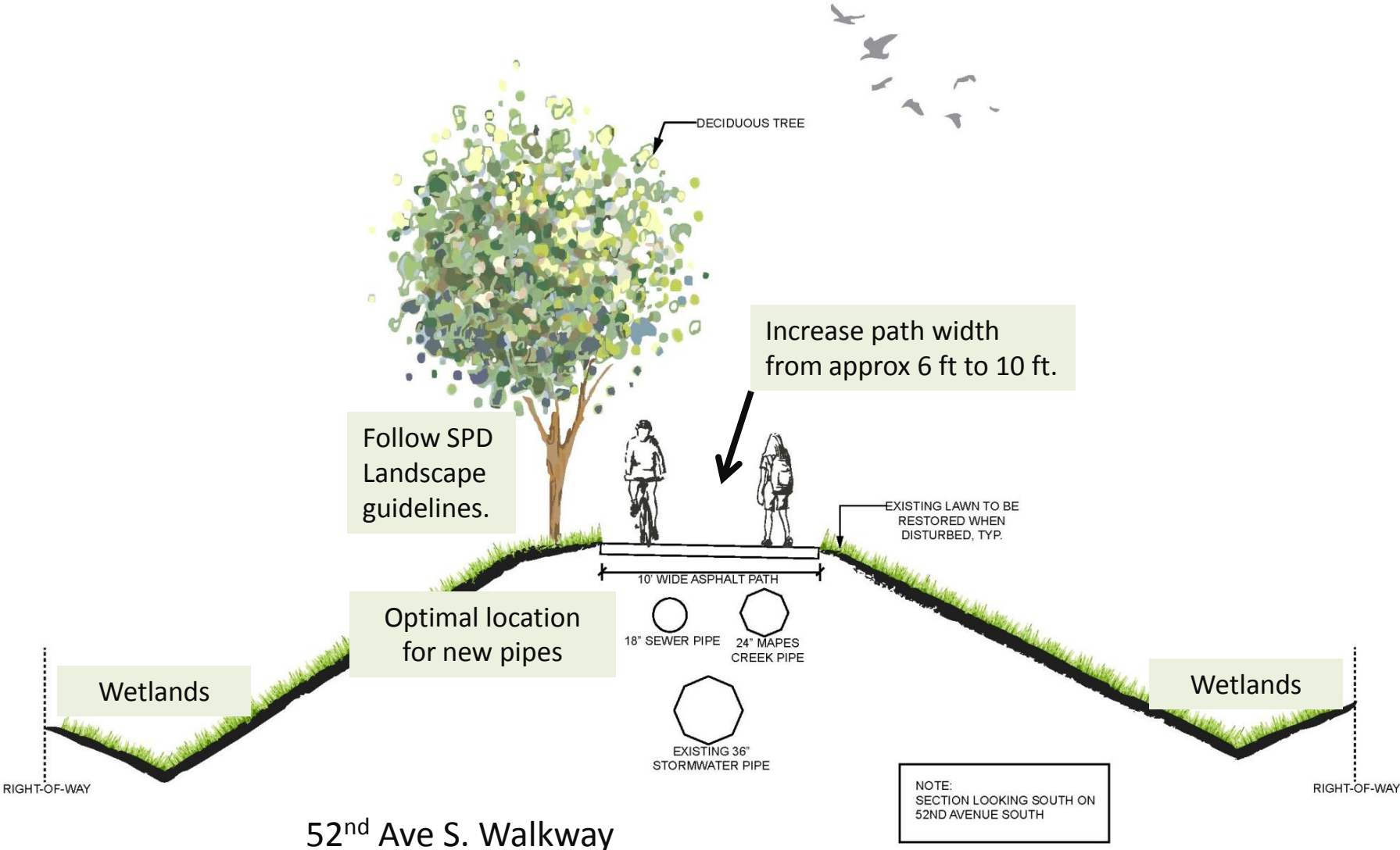
S. Henderson Street – 60% Design



S. Henderson Street – 90% Design



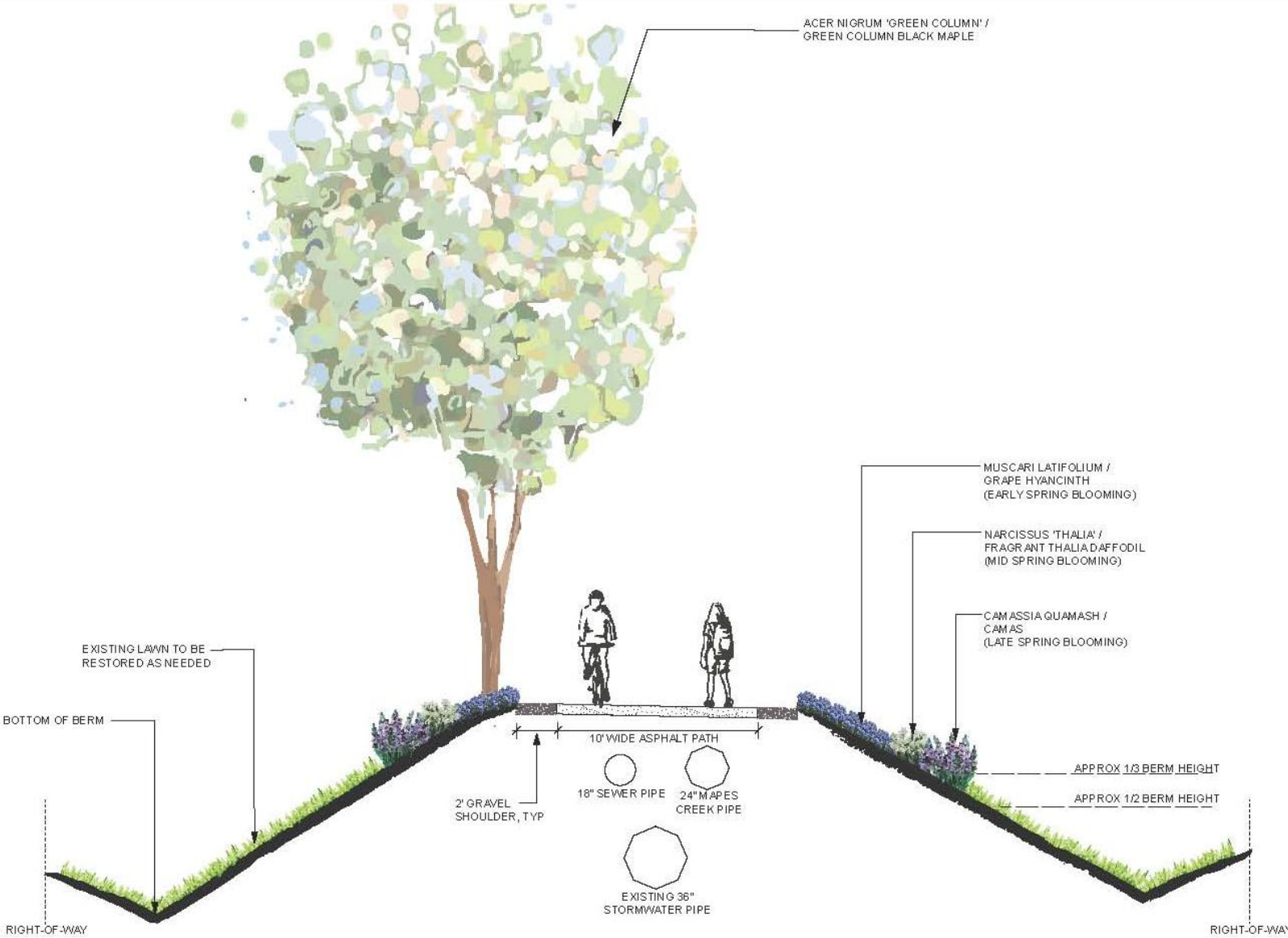
52nd Ave S Walkway – 60% Design



52nd Ave S. Walkway

52nd Ave S Walkway – 90% Design

NOTE:
SECTION LOOKING SOUTH ON
52ND AVENUE SOUTH



SECTION B-BB

Plant Selection

Grape Hyacinth
Muscari latifolium



Camas
Camassia quamash



Fragrant Thalia Daffodil
Narcissus 'Thalia'



Blue Endless Summer Hydrangea
Hydrangea macrophylla 'Bailmer'



Silver Dragon Lilyturf
Liriope muscari 'Silver Dragon'



Plant Selection

Green Column Black Maple
Acer nigrum 'Green Column'



Tupelo Tree
Nyssa sylvatica



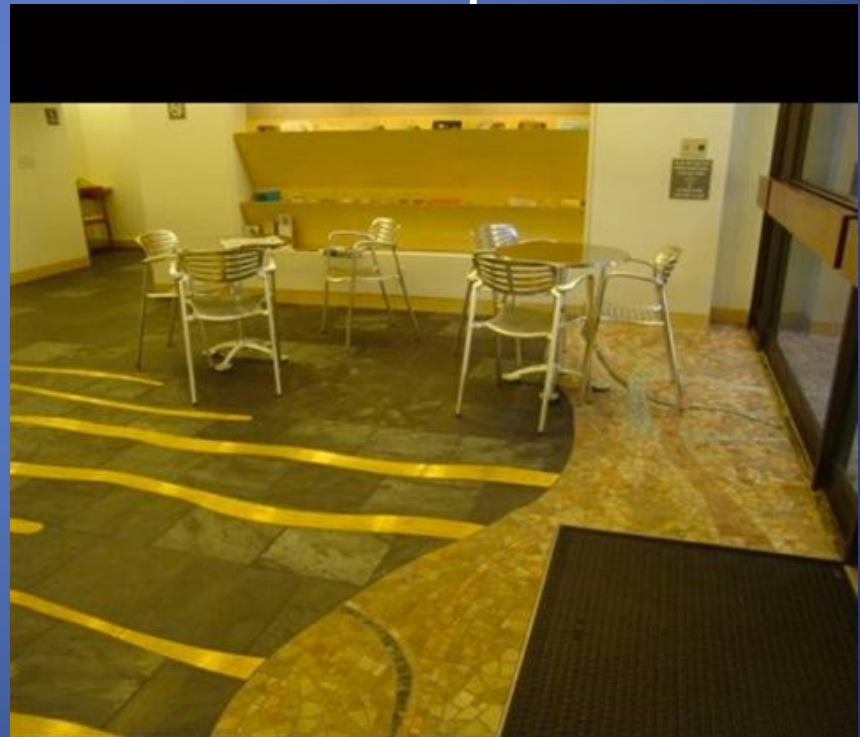
Bonfire Sugar Maple
Acer saccharum 'Bonfire'



Art in Walkway

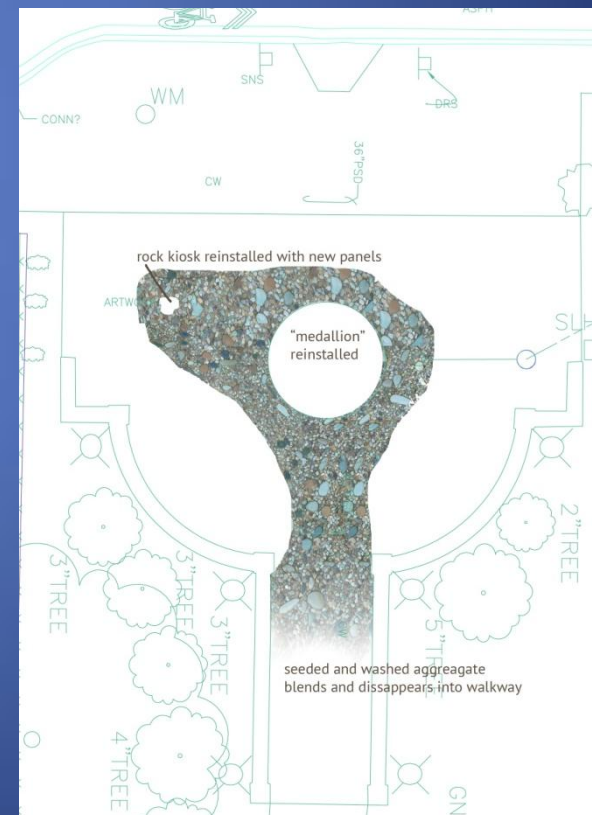
Yeggy Studio (Michael Yegizaw)

- Examples



Plaza Restoration

- SEED wants all art pieces reinstalled.
- Artist (Mary Coss) is creating new pattern with flow. Example:



Summary of Right-of-Way Changes

- Bulbs planted in upper 52nd Ave S berm slopes; maintainable and sustainable.
- Bulbs selected to create “blue line” that follows the creek pipe and fit art in walkway.
- Art integrated into walkway pavement.
- Plaza fully restored with new pattern that flows into walkway.
- Fence inset additional 3 feet, depends on agreement between SEED and SDOT.
- SDOT road/sidewalk requirements now preclude bioswale in 52nd Ave S.

On-going Coordination

- **Parks**
 - Integration of project into park.
- **SDOT**
 - Fisher Place Walkway Improvements
 - Rainier Ave S signal improvements
- **SPD**
 - Security & safety requirements
- **King County Wastewater & Metro**
 - Connecting to existing pump station.
 - Maintaining trolley service.
- **Other Stakeholders**

Beer Sheva Park & Vicinity



Pritchard Beach

Urban Farm & Wetland

Beer Sheva Park

Atlantic City Boat Ramp

Seward Park Ave S

Lake Washington Apts.

RBHS

©2010 Google

©2012 Google

Beer Sheva Park

Beer Sheva Park

Rainier Beach HS

Denise Louie Education Center

S Henderson St

Crosswalk →

KC Pump Sta.



LAKE WASHINGTON

Lake Washington Apts.

Mapes Creek Channel – 60% Design



LANDSCAPE NOTES

1. SEE CREEK RESTORATION PLAN (1 OF 2) FOR PLANT SCHEDULE.
2. TREES TO BE PRUNED AND LIMBED UP AS THEY GROW TO PROVIDE SIGHT LINES INTO PARK.
3. TREES ARE SHOWN AT APPROXIMATE 10 YEAR POST PLANTING SIZE.
4. SEE SHEET 36 FOR IRRIGATION DRAFT ZONING PLAN.
5. SEE TESC PLAN FOR TREE REMOVAL AND TRANSPLANTING.

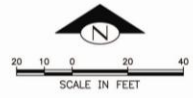
IRRIGATION NOTES

1. UPPER AND LOWER CHANNEL PLANTING AREAS WILL BE IRRIGATED WITH A FIXED SPRAY SYSTEM PER SEATTLE PARKS DEPARTMENT STANDARDS.
2. IRRIGATION REQUIREMENTS FOR LAWN AREAS TO BE DETERMINED BY SEATTLE PARKS DEPARTMENT.

LEGEND

- 1/4" MINUS CRUSHED ROCK PAVING PER SPR STD. DETAIL 32 15 43
- PRECAST REINFORCED TURF PAVING FILLED WITH 1/4" MINUS CRUSHED ROCK (3/32)
- PRECAST REINFORCED TURF PAVING WITH LAWN (3/32)
- PEDESTRIAN BRIDGE. SEE STRUCTURAL.
- UPLAND WOODY DEBRIS AND BOULDERS TO PROVIDE HABITAT AND NUTRIENT LOADING IN THE UPLAND AREAS.
- CHANNEL PLANTING AREA
- REMOVE INVASIVE PLANTS AND RESTORE WITH LOW SHORELINE PLANTING (ZONE 1 PLANTS - SEE PLANT SCHEDULE)
- RESTORED PLANTING BED
- RESTORED LAWN
- 60' WETLAND BUFFER
- 100' SHORELINE HABITAT ECA LIMIT
- 200' SHORELINE DISTRICT ECA LIMIT
- LIMITS OF WORK
- TREE PROTECTION FENCE PER PARKS STANDARD PLANS
- TOP OF CHANNEL
- FIXED BOLLARD PER SPR STD DETAIL 12 93 63.26
- SPECIAL GRADING ACTIVITY AROUND EXISTING TREES

Lower Mapes Creek Channel - 90% Design

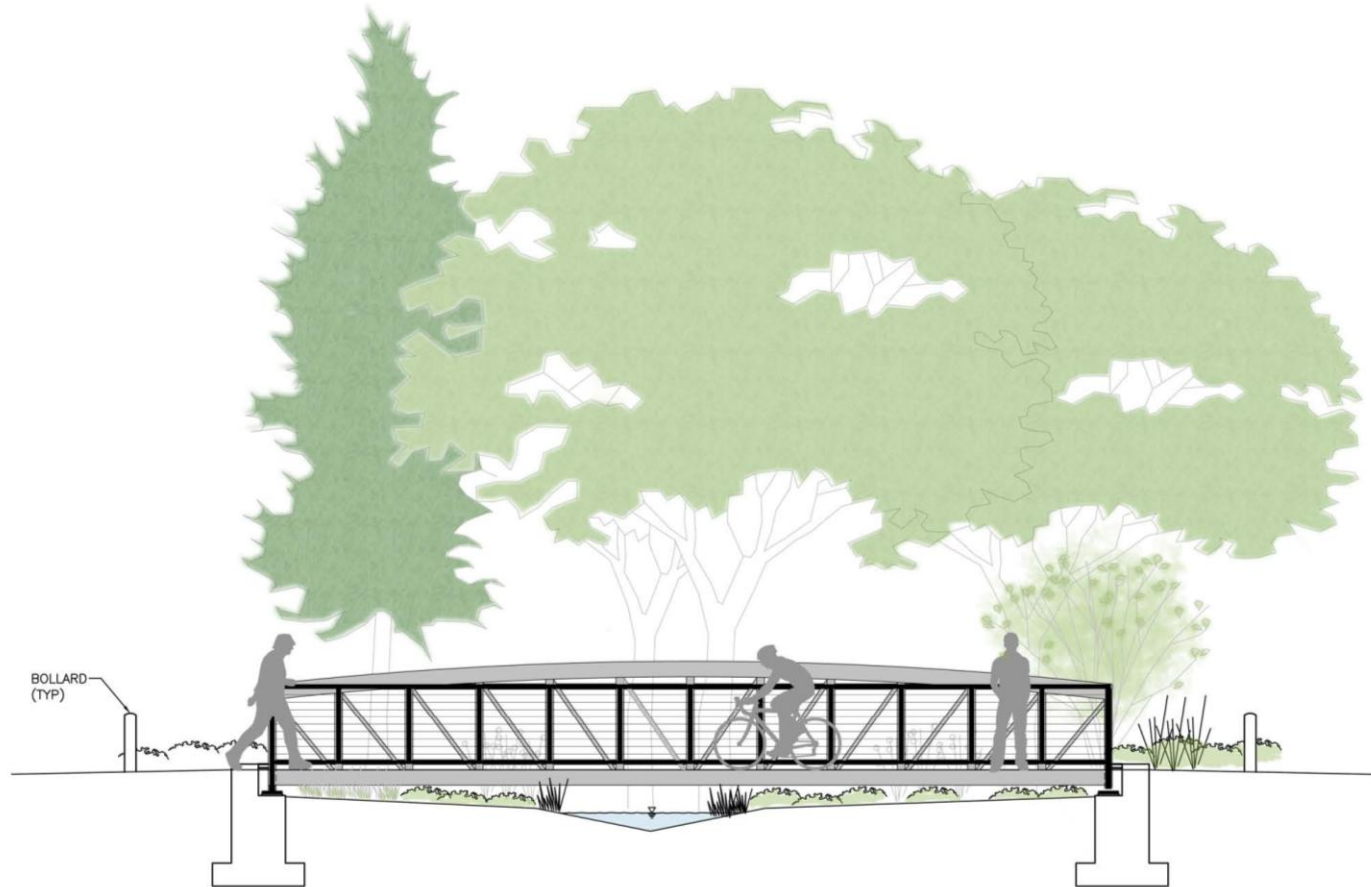


NOTES
 1. ALL PROPOSED PATHS HAVE BEEN GRADED TO MEET ADA GUIDELINES.

LEGEND

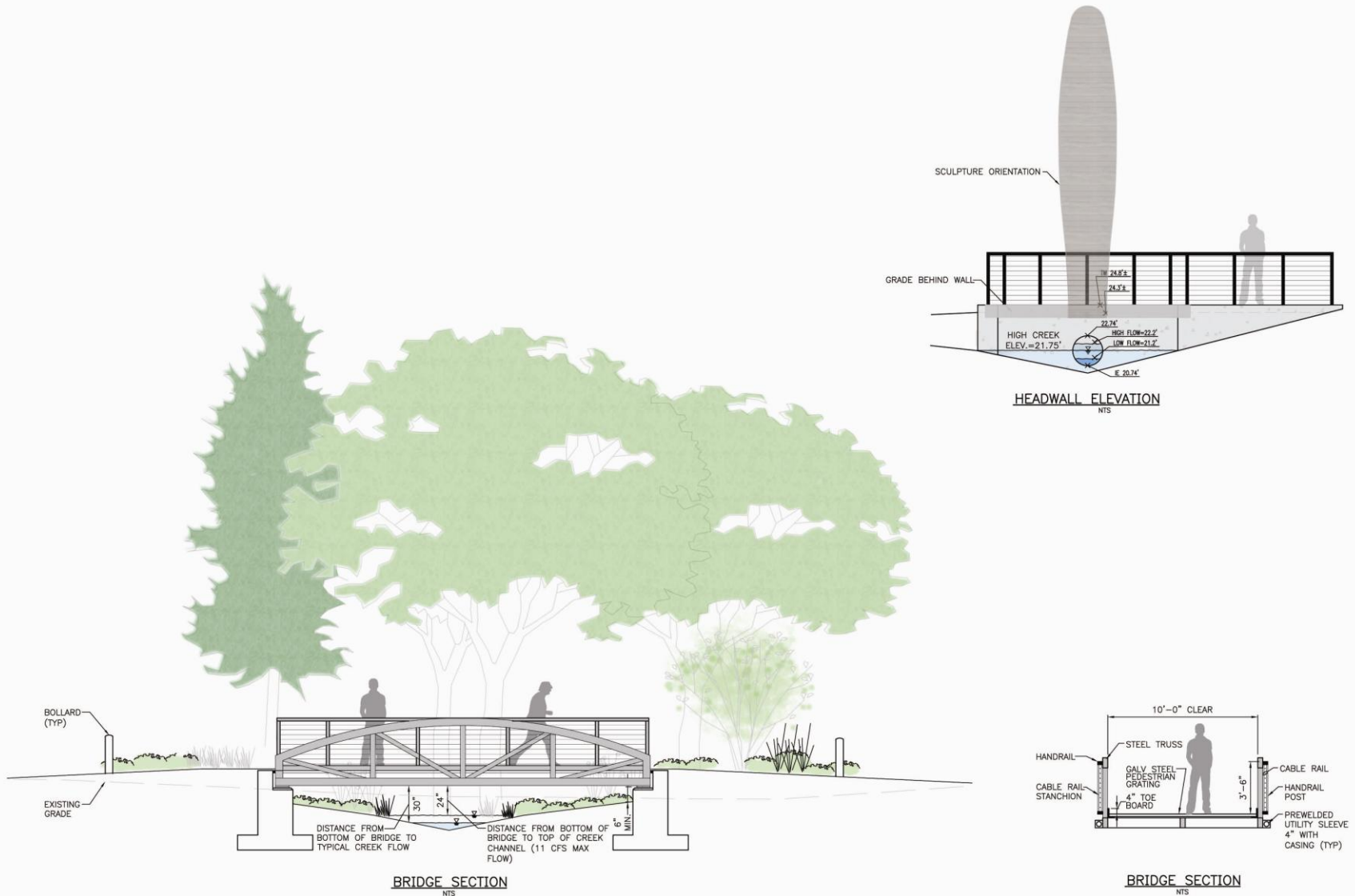
	1/2" MINUS CRUSHED ROCK PAVING RESTORATION PER SPR STD. DETAIL 32 15 43
	4" THICK CONCRETE WALK PER SPR STD. DETAIL 32 13 76
	6" THICK CONCRETE WALK PER SPR STD. DETAIL 32 13 76
	PEDESTRIAN BRIDGE. SEE STRUCTURAL.
	ADA STALL SYMBOL PER SPR STD. DETAIL 10 14 00.29
	ADA ACCESS AISLE STRIPING PER SPR STD. DETAIL 10 14 00.29
	ADA PARKING SIGN PER SPR STD. DETAIL 10 14 00.29
	UPLAND WOODY DEBRIS AND BOULDERS. FINAL LOCATIONS AND ORIENTATIONS TO BE CONFIRMED DURING CONSTRUCTION BY STREAM GEOMORPHOLOGIST.
	RESTORED PLANTING BED
	PART SUN PLANT PALETTE
	SUN PLANT PALETTE
	REMOVE INVASIVE PLANTS AND RESTORE WITH LOW SHORELINE PLANTING (ZONE 1 PLANTS - SEE PLANT SCHEDULE)
	HYDROSEEDED RESTORED LAWN
	ARBORIST WOODCHIP MULCH (2"-3" DEPTH)
	TEMPORARY PLANT PROTECTION FENCE AND GATE
	60' WETLAND BUFFER
	LIMITS OF WORK
	TREE PROTECTION FENCE PER SPR STD DETAIL 02950.57 & 02950.58.
	FIXED BOLLARD PER SPR STD DETAIL 12 93 63.33
	REMOVABLE BOLLARD PER SPR STD DETAIL 12 93 63.23
	SPECIAL GRADING ACTIVITY AROUND EXISTING TREES PER SPU TREE, VEGETATION AND SOIL PROTECTION SPECIFICATION
	EXISTING TREES
	PROPOSED TREES

Mapes Creek Channel - 60% Design



BRIDGE SECTION 3
NTS

Mapes Creek Channel – 90% Design



View into Beer Sheva Park



Post Construction Rendering



Beer Sheva Park – Before



Looking from Seward Park Ave
toward lake

Seward Park Ave into Beer Sheva Park - After



Lake Washington toward Seward Park Ave - Before



Lake Washington toward Seward Park Ave - After – 60% Design

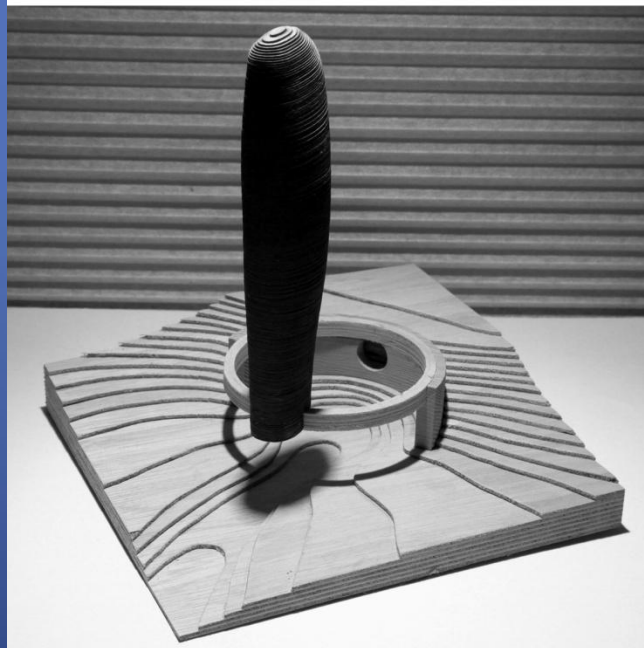
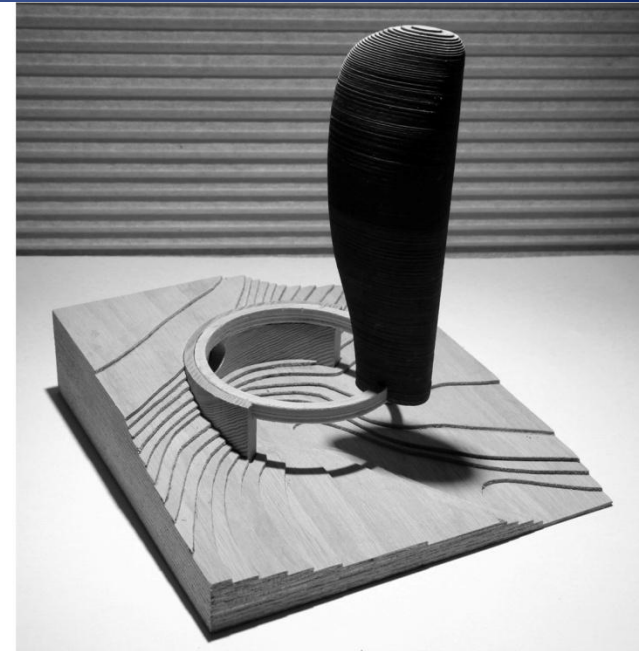
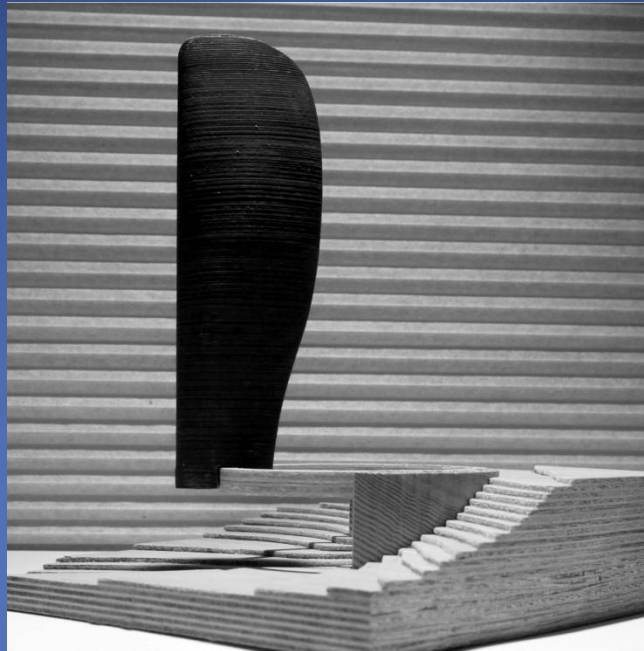


Lake Washington toward Seward Park Ave - After – 90% Design



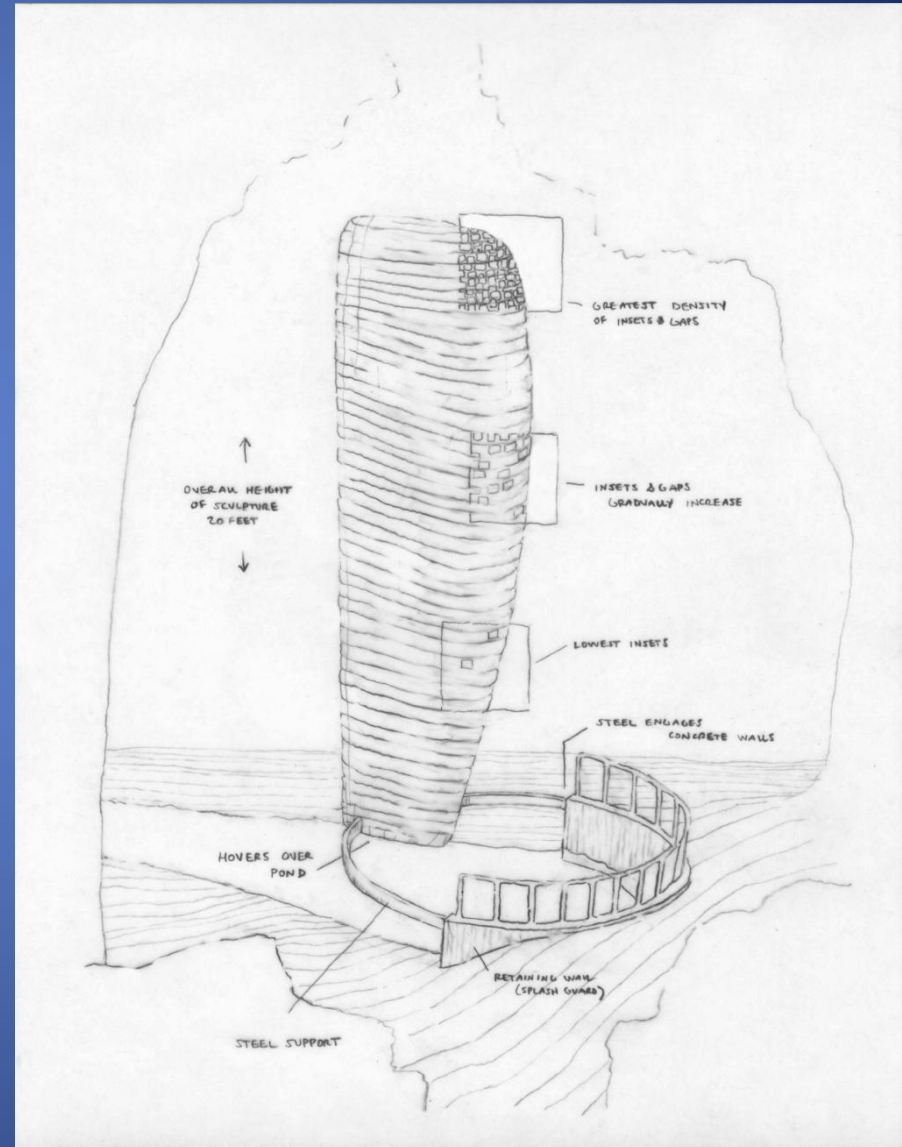
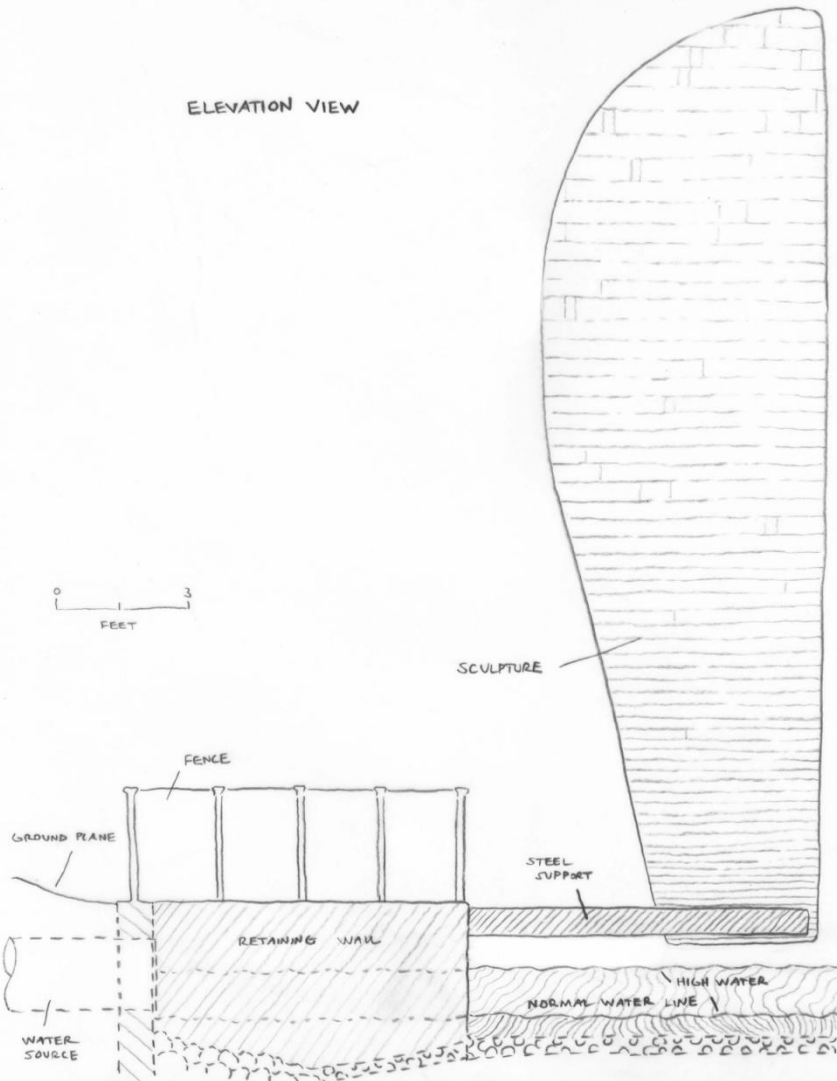
Art in Beer Sheva Park

(approved
by PAAC)



A Contemplative Space

ELEVATION VIEW



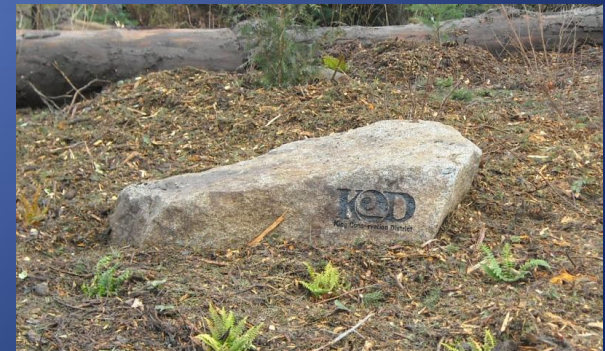
Bridge Design

- Soften profile
- Add wood elements creating connection with Art.
- Elevated crossing for fish-friendly passage.



Signage

- Schedule constraints for these projects.
- Community-Agency partnerships
 - With Parks (Beer Sheva Park)
 - SDOT (right-of-way)
- Grant contributors do not need recognition.
- Touchstone project, rocks, etc.
- Vandalism/maintenance



Summary of Mapes Creek Changes

- Paths shaped to enhance connections and experience.
- Grading low area to create more usable space.
- Softened transitions from channel to uplands.
- Art makes visual connection between neighborhood and Lake Washington.
- Art theme integrated into bridge design.

Project Schedule

for Mapes Creek and 52nd Ave CSO Conveyance

Phase	Timeline
Project Design and Permitting	2012-August 2013
Public Meetings	July 2012-August 2013
Construction	August 2013 - November 2014
Plant Establishment and Monitoring	2015-2017

Questions & Comments