

February 19, 2013

Karen Cascio
Gamma Phi Beta Sorority
4529 17th Avenue East
Seattle, WA 98115

Re: Skybridge
Subject: Street Use Permit – Public Benefits

Dear Karen,

I am writing to provide a narrative on the existing Gamma Phi Beta skybridge.

The Gamma Phi Beta Sorority at the University of Washington was first established in 1903. Located at 4529 17th Avenue East in Seattle, it is just 1/2 block north of the University of Washington campus and 2 blocks east of the University District.

The sorority grew large enough that it needed to increase its physical space, and in 1976 expanded with an annex on 16th Avenue East, across the alley from the original house. By the 1970's, this urban neighborhood was filled with hundreds if not thousands of people on a daily basis. Due to the location of the sorority, it has had many altercations with the transient/homeless population from University Avenue, as the alley is the "first stop" on Greek Row for this transient population.

For the safety of its members, the sorority constructed a skybridge to connect the house and annex across the alley in 1977, and has been in continuous use ever since. The sorority currently has 107 residents (60 living in the main house and 47 living in the annex), with all common rooms being located in the main house. The skybridge allows the sorority members to safely travel back and forth between the main houses and annex 24 hours a day.

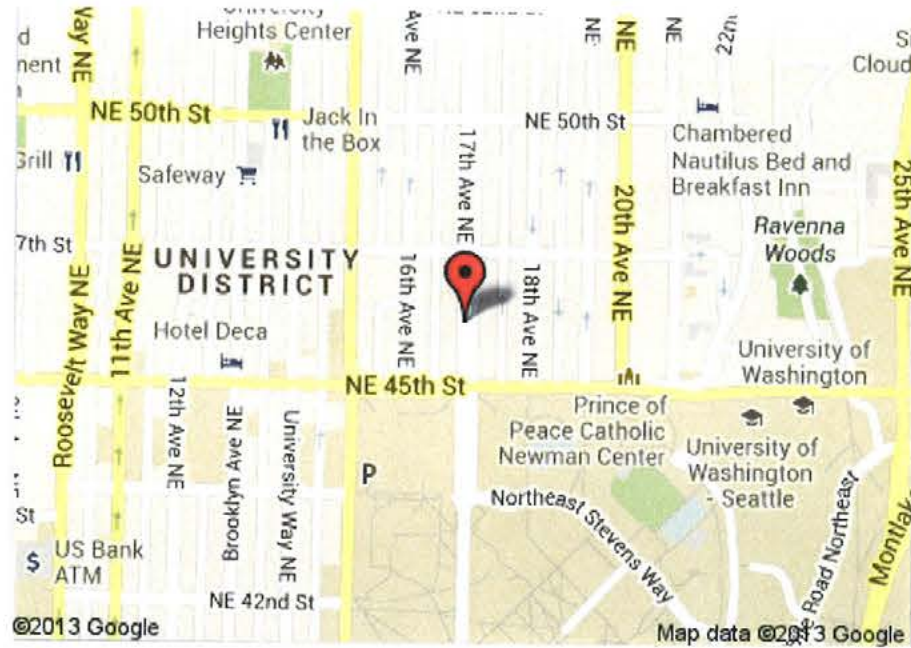
The skybridge offers a benefit to the general public in providing nighttime illumination in the alley, providing safety for pedestrians. As noted above, it also provides increased safety for the sorority members. The sorority has added lighting in the alley on the Main House and has installed security cameras on all faces of the house and in the alley. The sorority is also working with the Crime Prevention department of the Seattle Police and the University of Washington Police to increase safety in the alley.

We consider the existing skybridge to meet both the spirit and intent of the Guidelines, and advocate that the City grant a permit extension for its continued use.

Sincerely,

Guy Peckham, AIA, LEED® AP
Principal





History:

- Main house built in 1922
- Skybridge built in 1978

Public benefit:

- Replace city sidewalk damaged by city tree
- Replace city tree
- Plant additional tree on 17th Ave; location determined by city



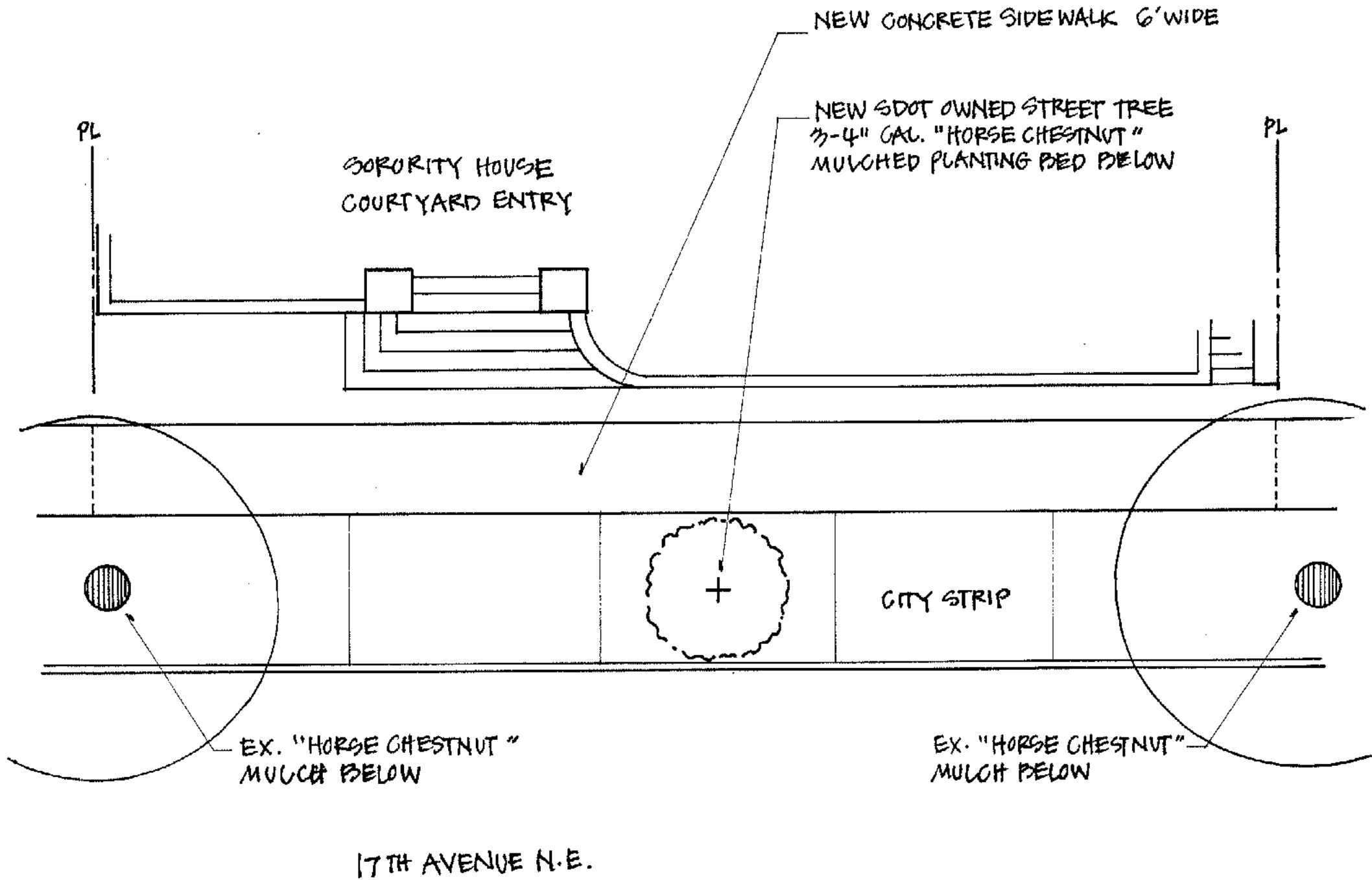
Looking North



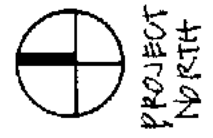
Front of house showing sidewalk, parking strip



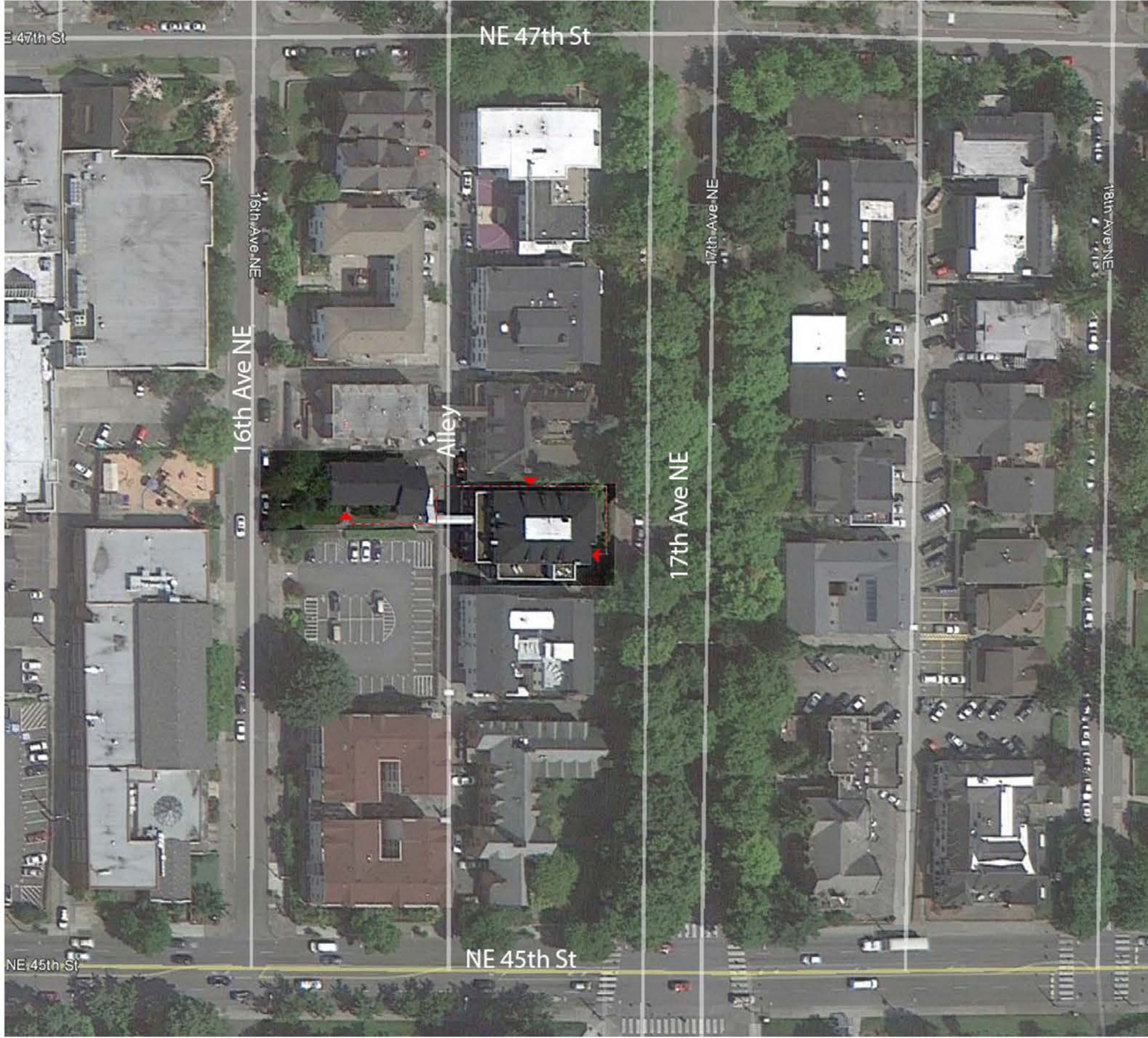
GAMMA PHI BETA SORORITY HOUSE
 SEATTLE, WA
 4529 17TH AVENUE N.E.



SIDE WALK AND CITY STRIP PLAN
 1/8" = 1'-0" 8.22.2013

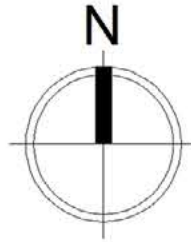


GAMMA PHI BETA SORORITY HOUSE
 SEATTLE, WA
 4529 17TH AVENUE N.E.



Path from Main house to Annex w/o using skybridge

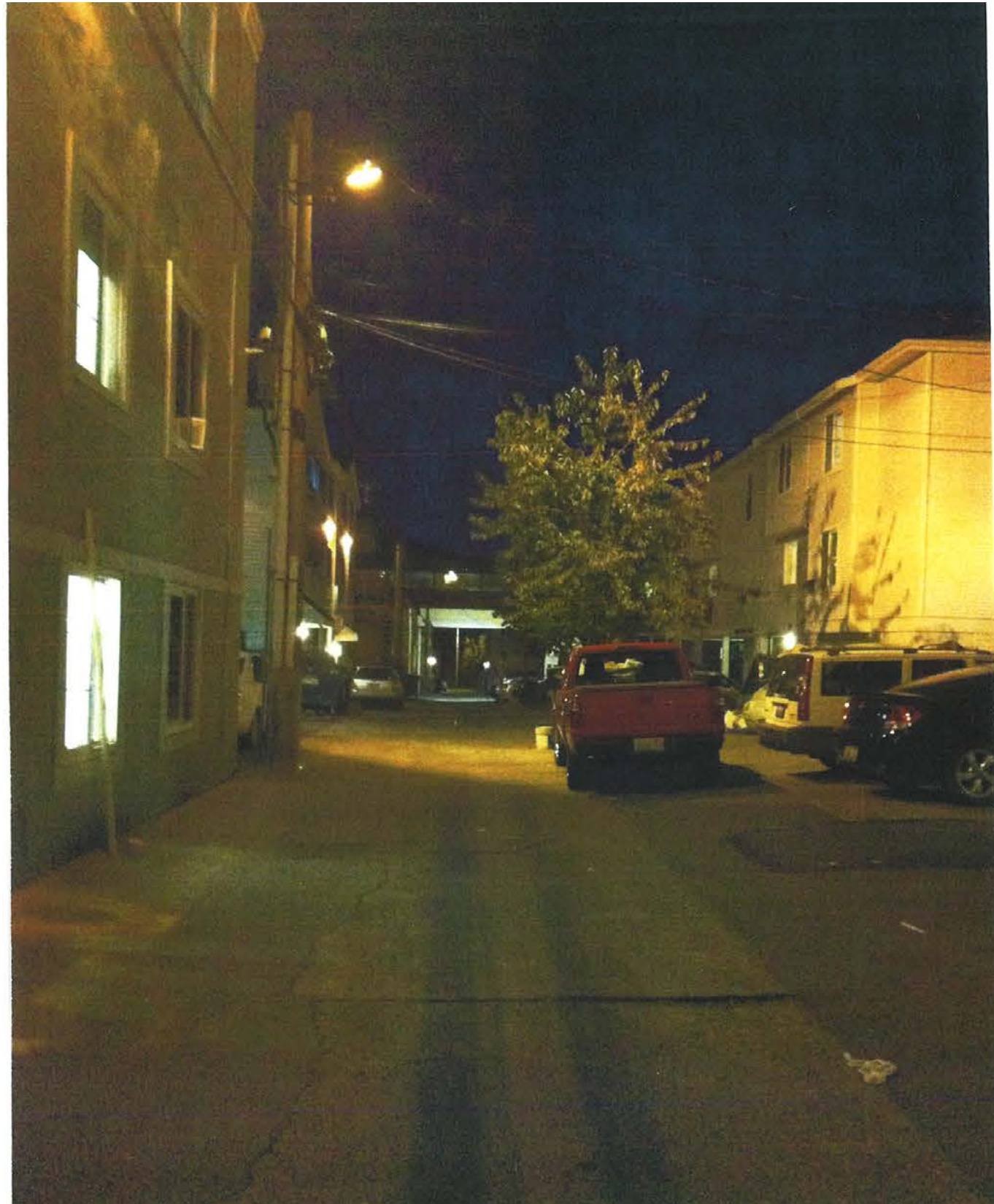
Trips per day across skybridge
300-350



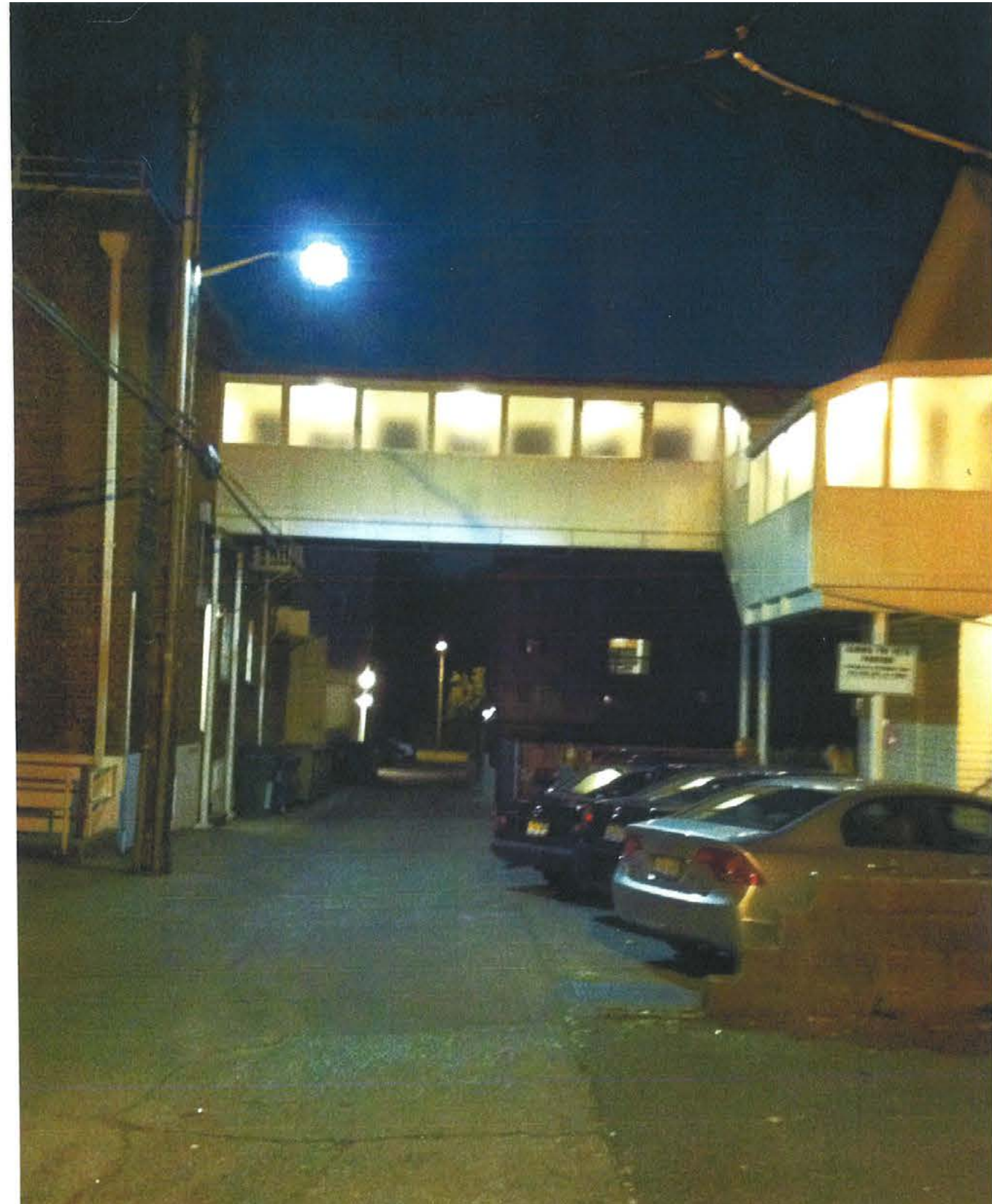
GAMMA PHI BETA SORORITY HOUSE

SEATTLE, WA





Skybridge: Looking south from 47th Ave



Skybridge @ night: permanently illuminated



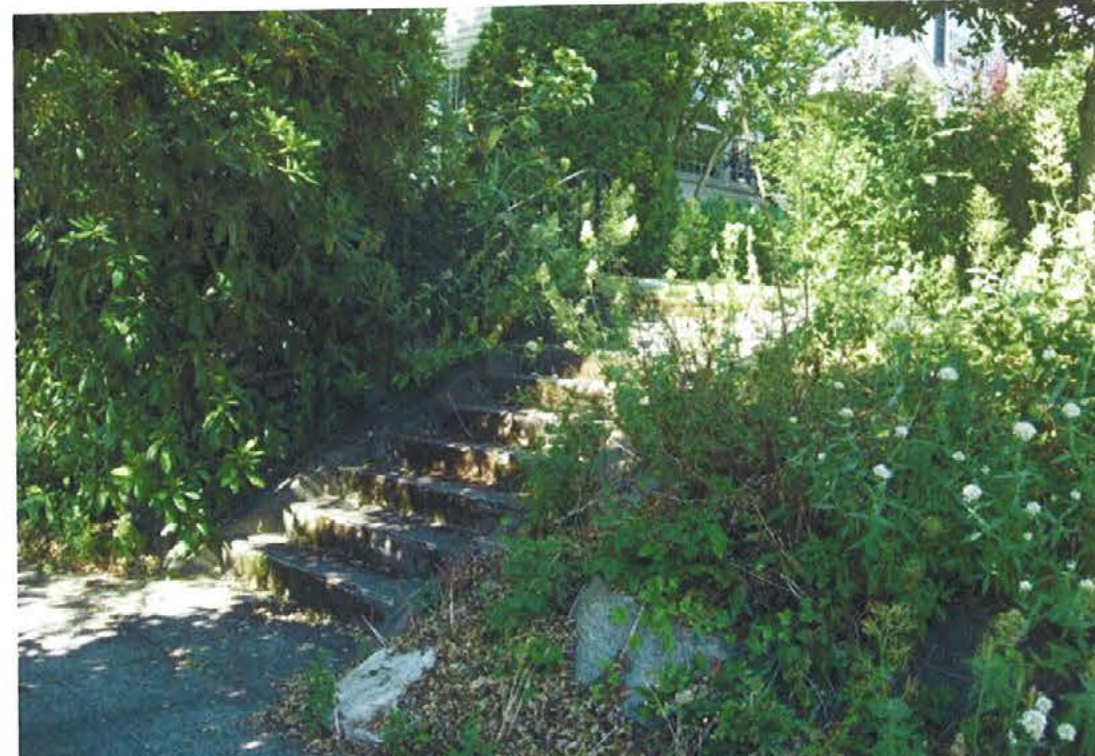
GAMMA PHI BETA SORORITY HOUSE
SEATTLE, WA

4529 17TH AVENUE N.E.



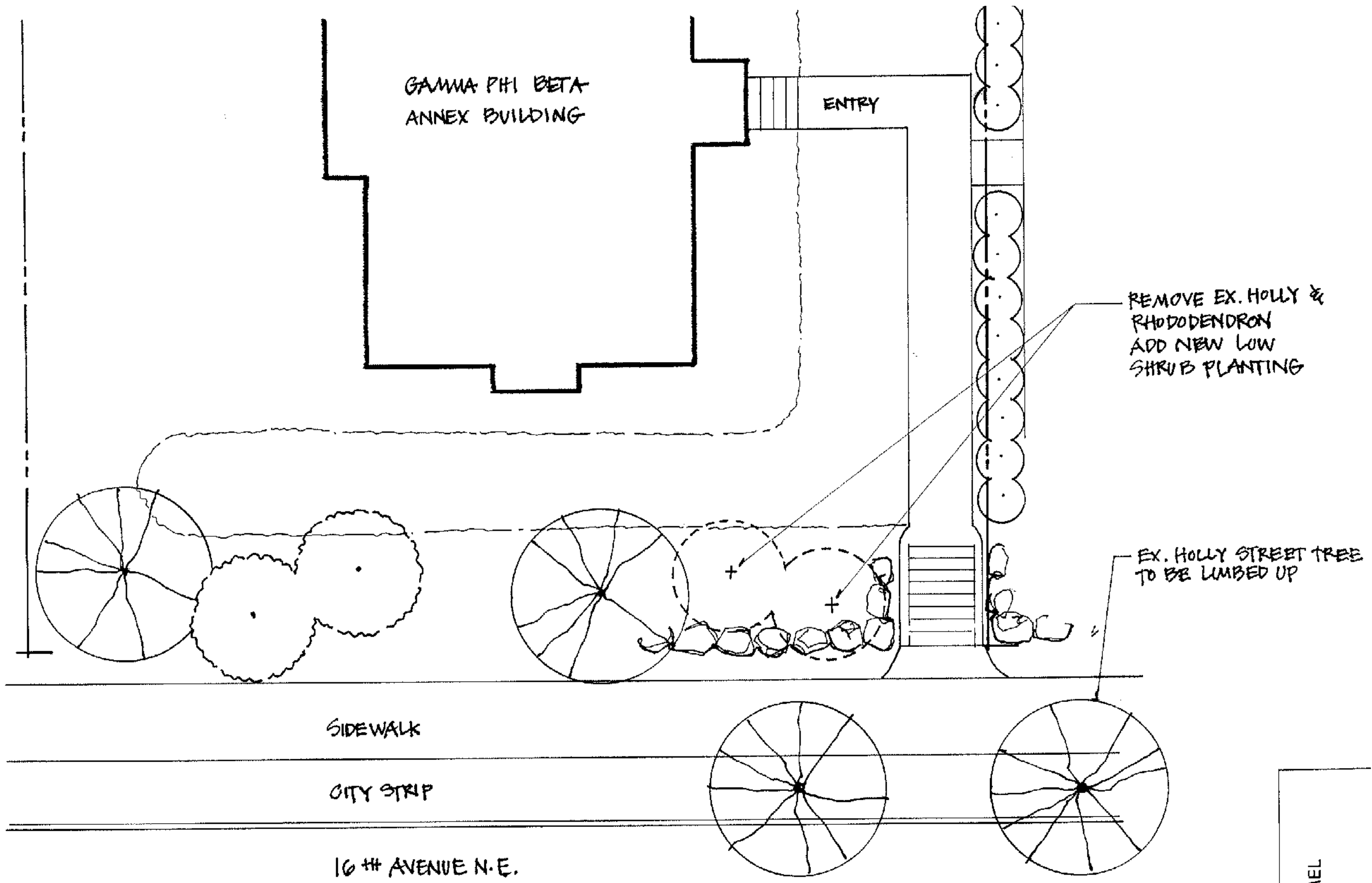
View of Annex

Public Benefit
-Trim trees in parking strip



GAMMA PHI BETA SORORITY HOUSE
SEATTLE, WA
4529 17TH AVENUE N.E.

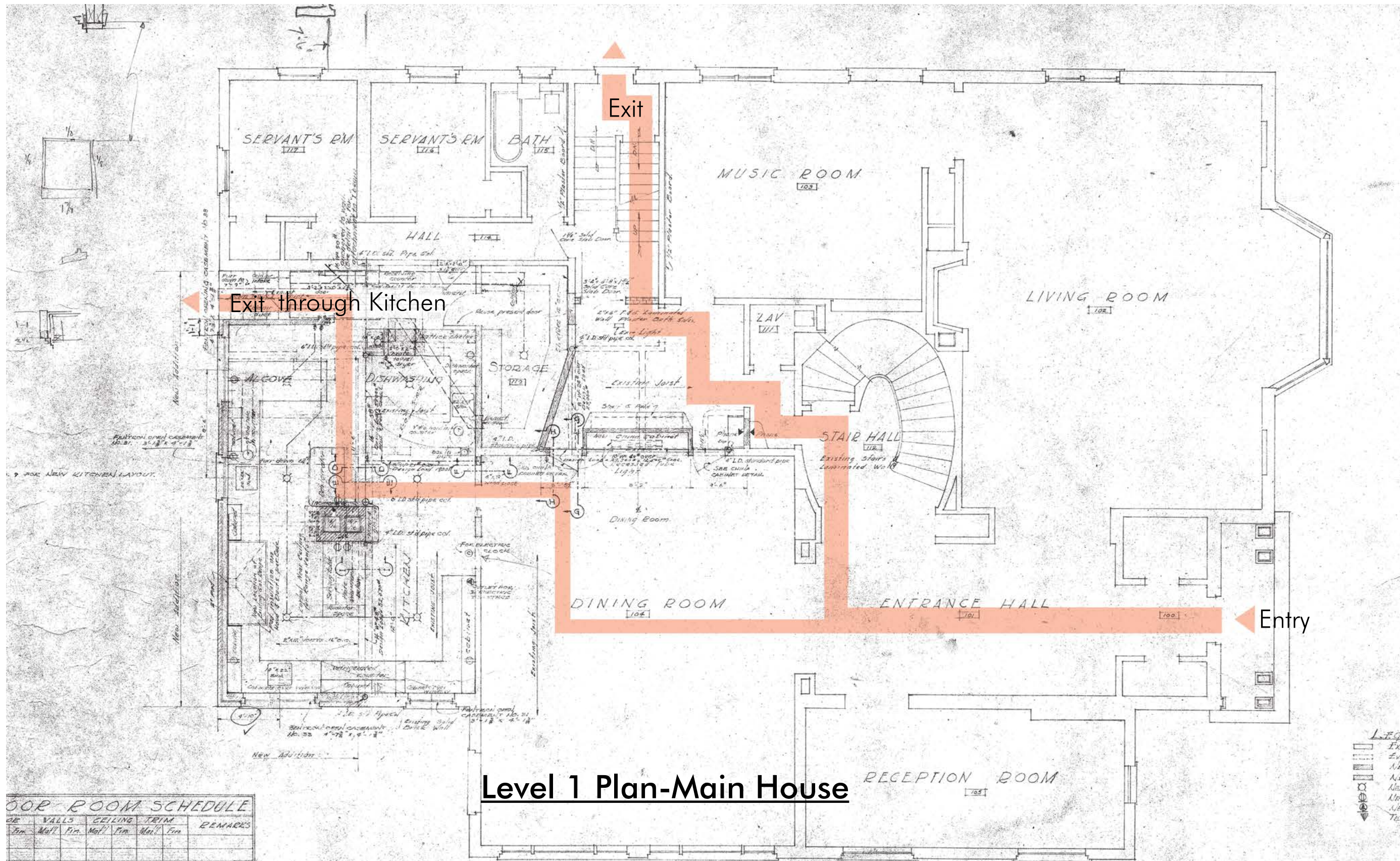




10 TH AVENUE N.E. LANDSCAPE PLAN
 1/8" = 1'0"
 8. 22. 2013



LISA HUMMEL



Level 1 Plan-Main House

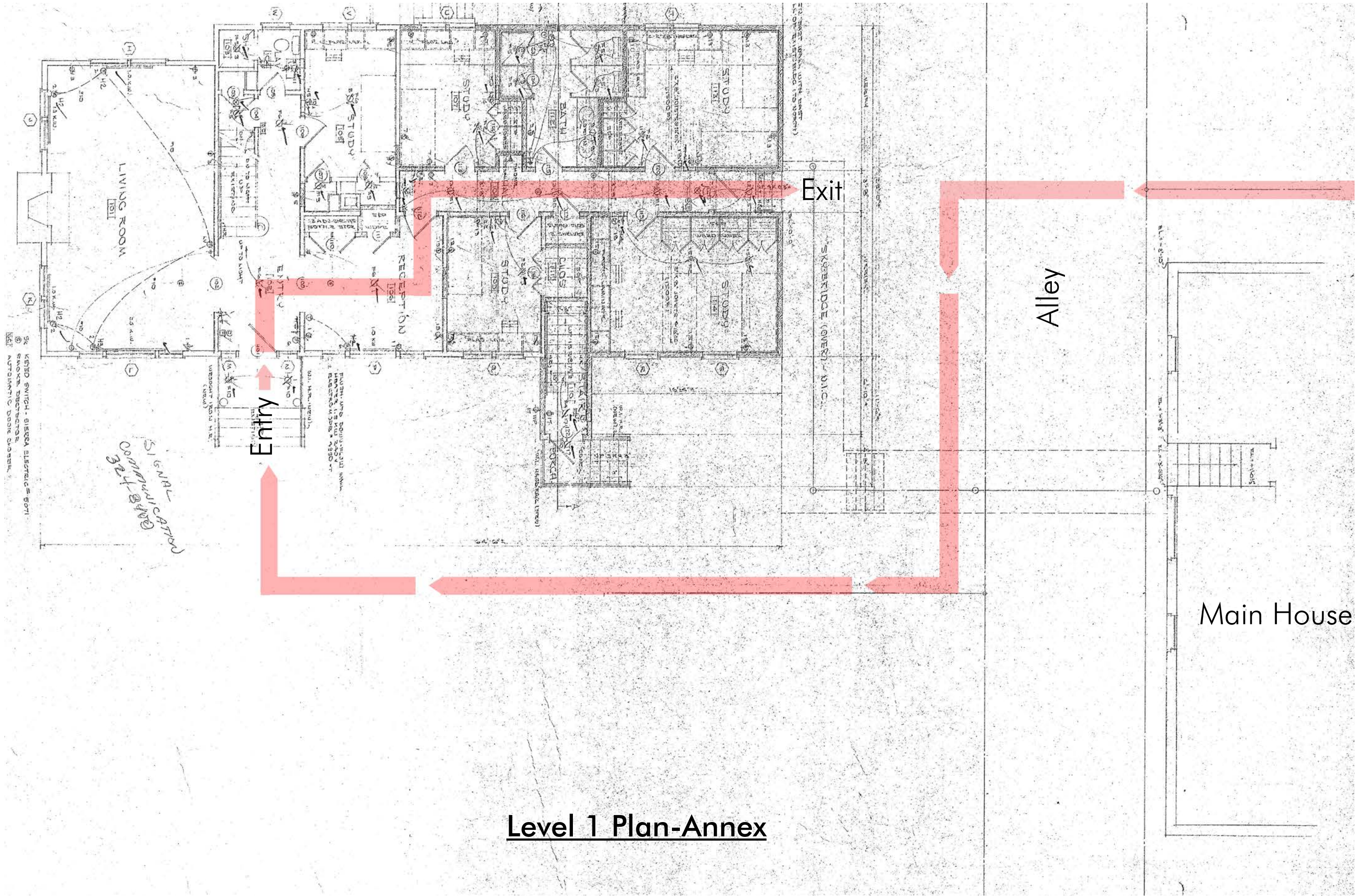
DOOR ROOM SCHEDULE

DOOR	VALLS	CEILING	TRIM	REMARKS
Fin	Wall	Fin	Wall	Fin



GAMMA PHI BETA SORORITY HOUSE
 SEATTLE, WA

4529 17TH AVENUE N.E.



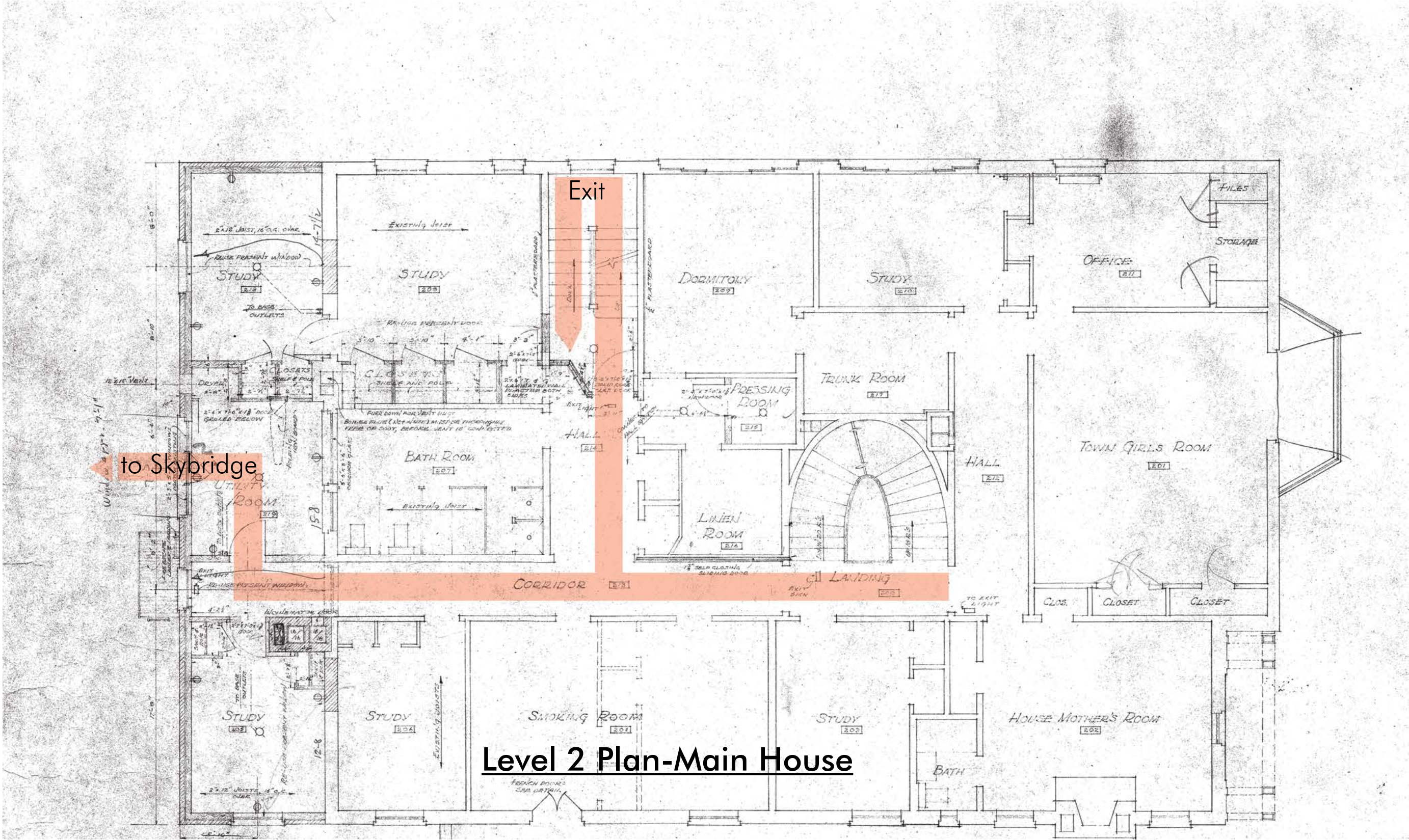
Level 1 Plan-Annex

GAMMA PHI BETA SORORITY HOUSE

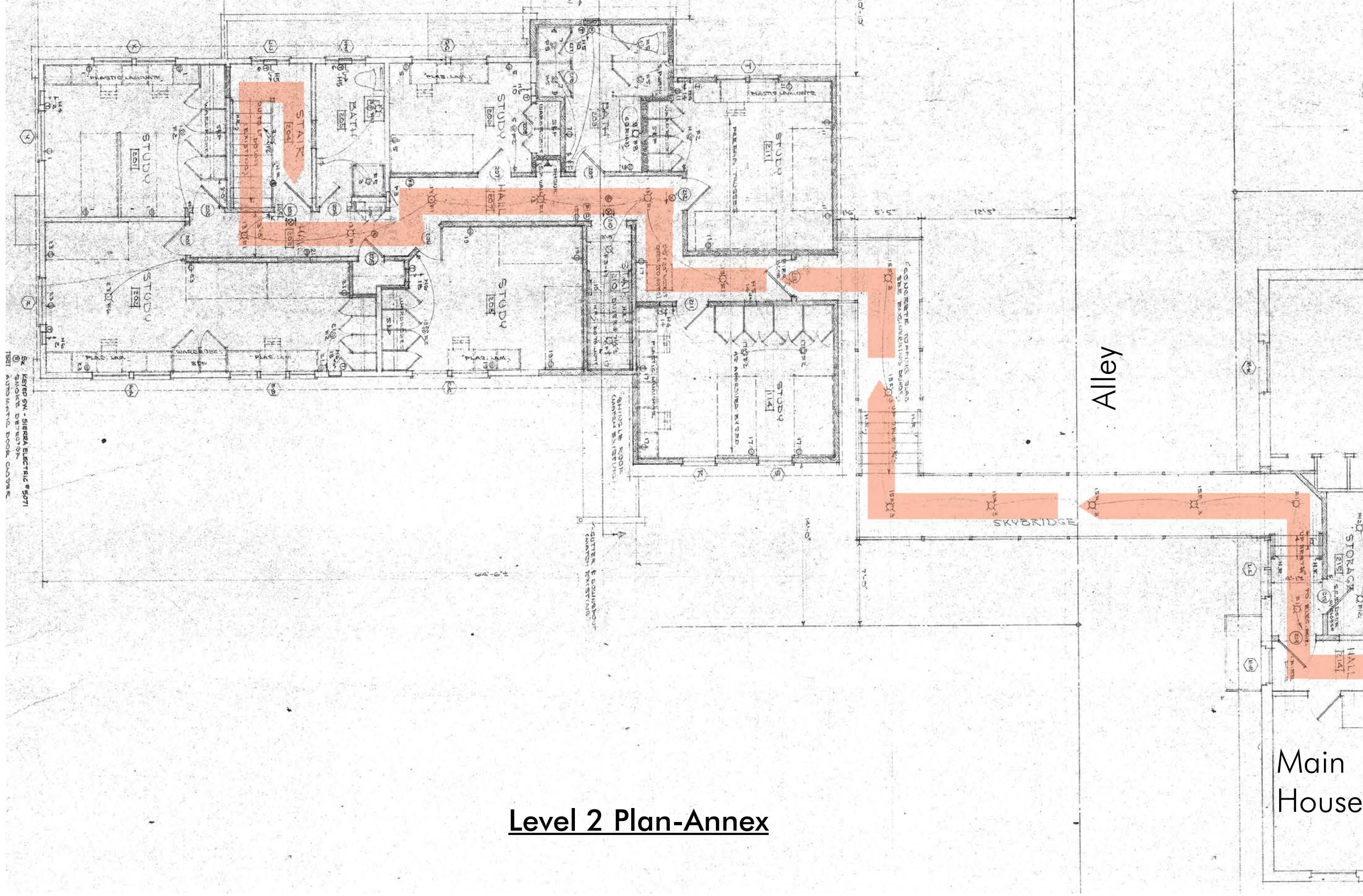
4529 17TH AVENUE N.E.

SEATTLE, WA





Level 2 Plan-Main House



Level 2 Plan-Annex

Main House

Alley

GAMMA PHI BETA SORORITY HOUSE

4529 17TH AVENUE N.E.

SEATTLE, WA

