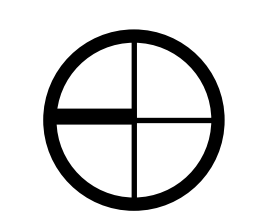
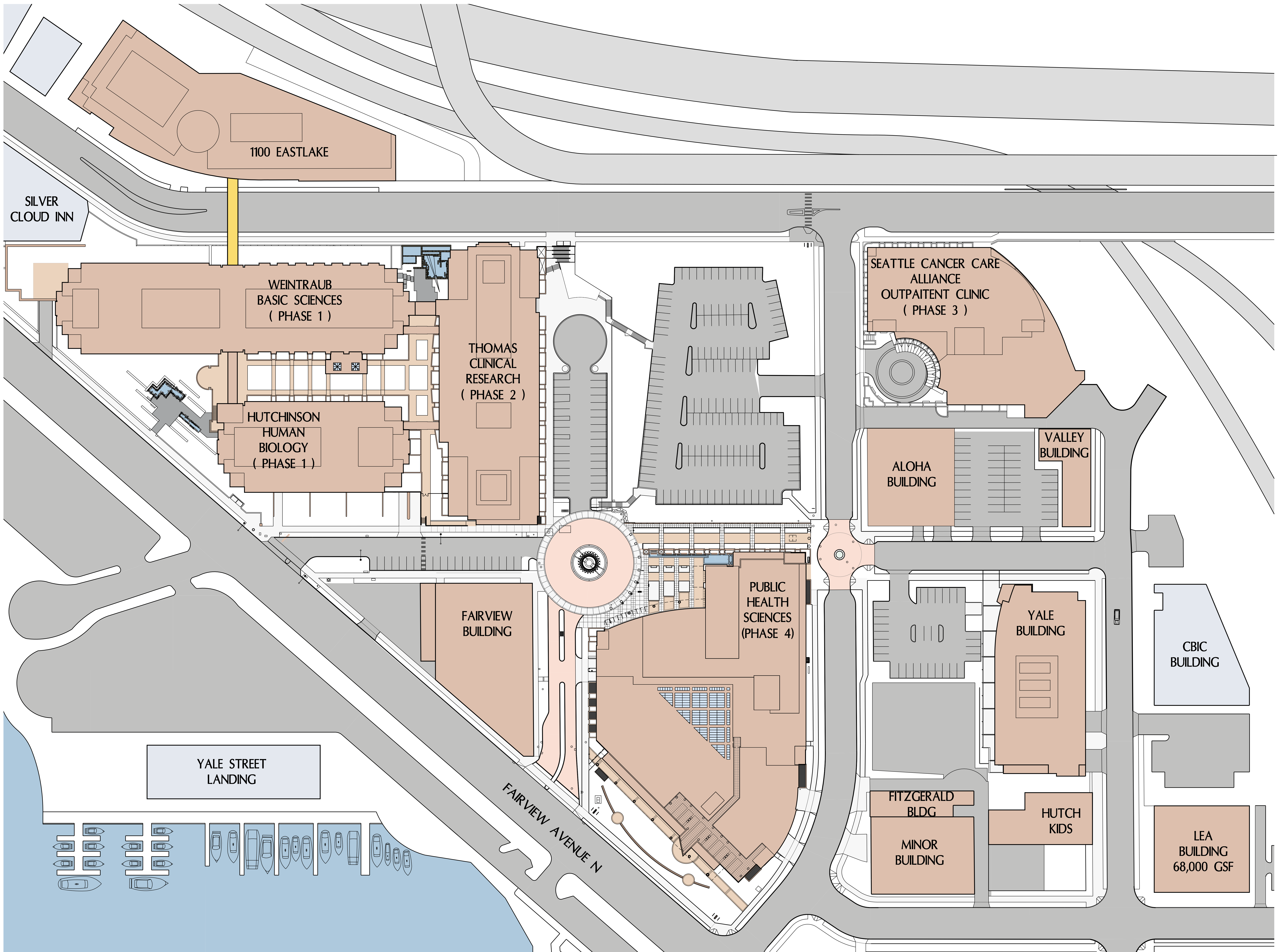


SEATTLE DESIGN COMMISSION

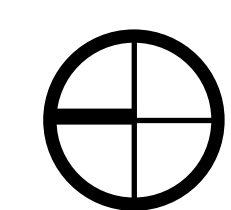
06.16.2011

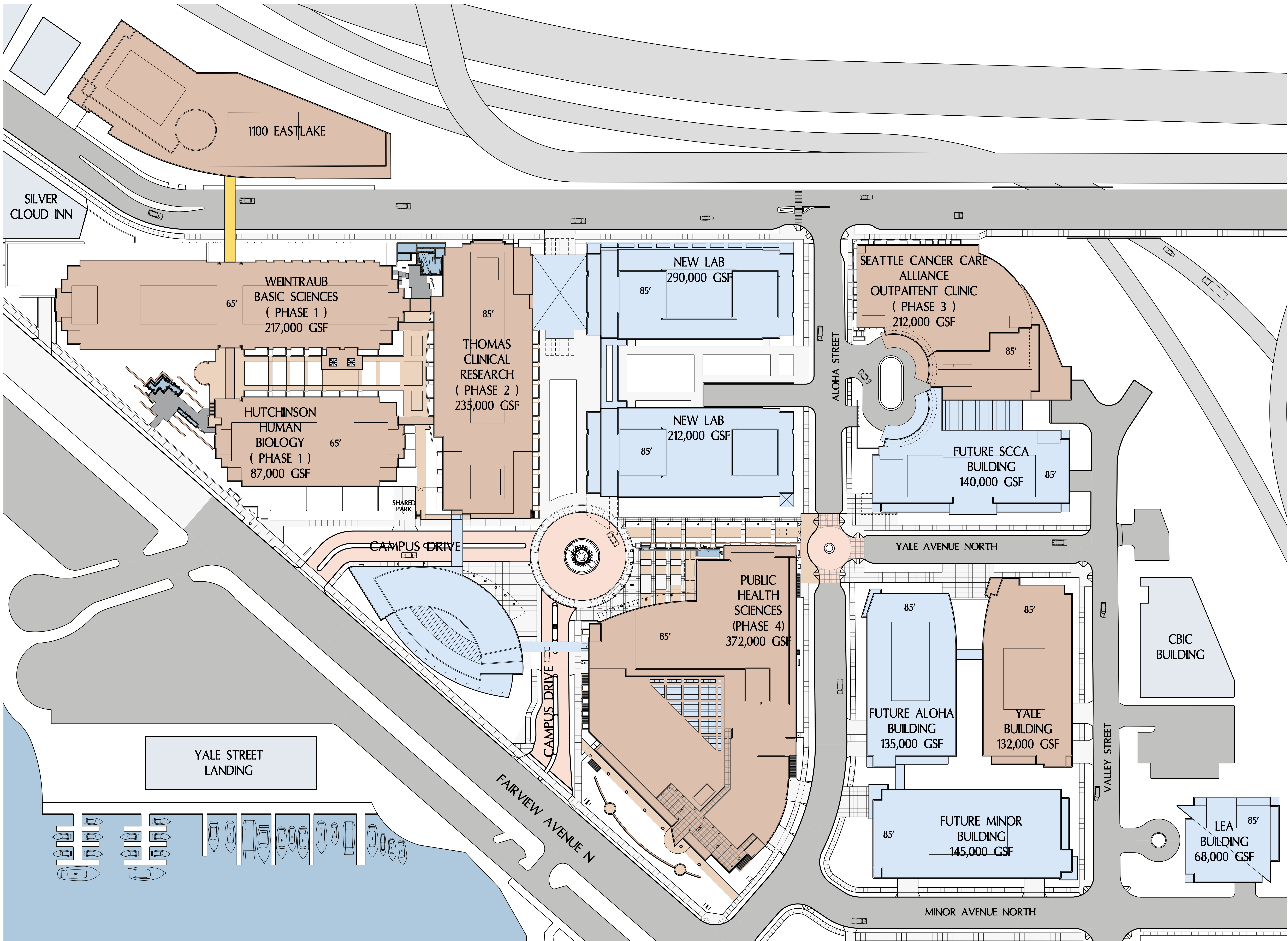




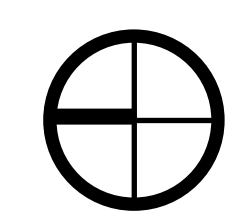


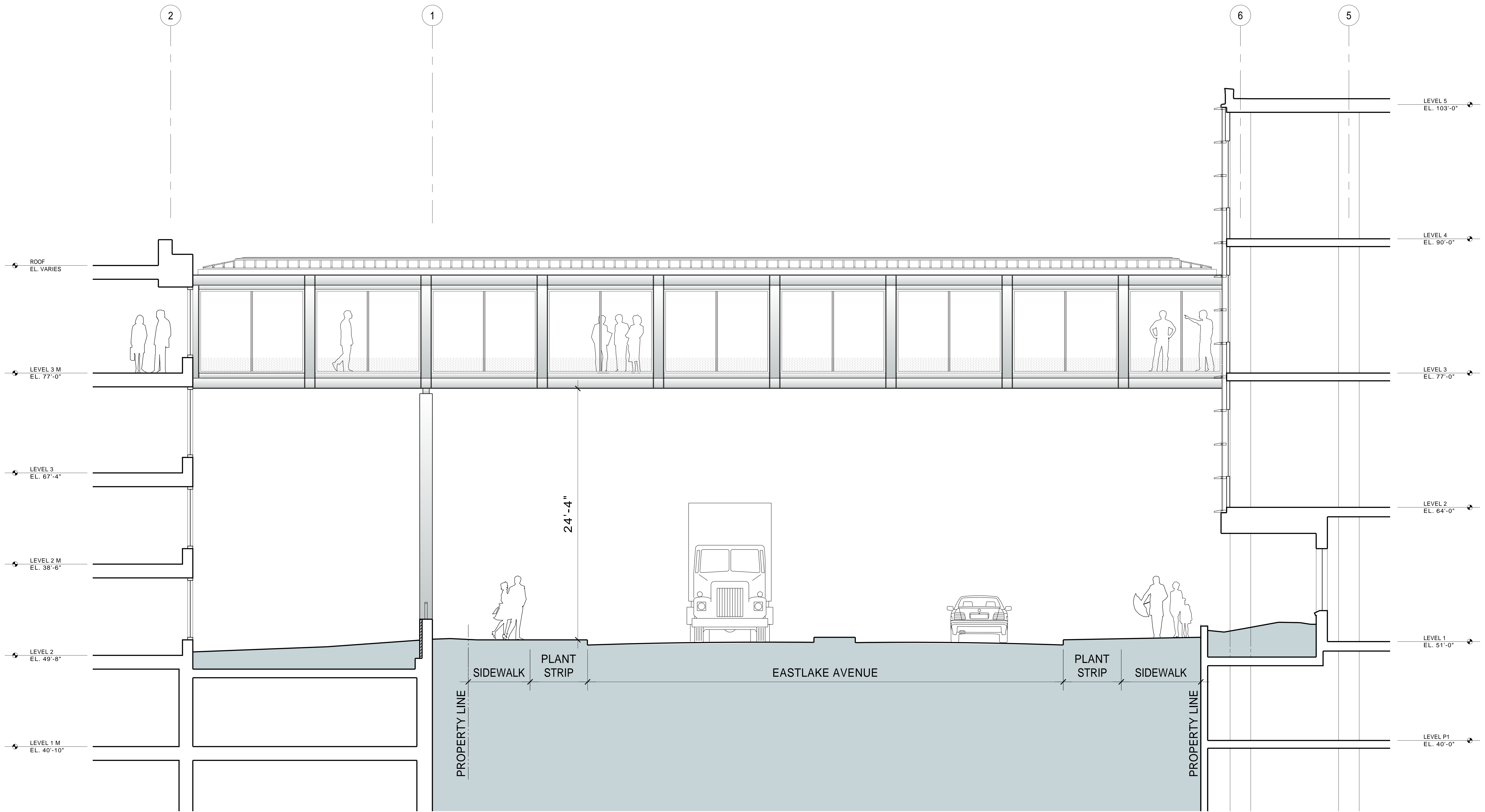
EXISTING CAMPUS





MASTER PLAN





SECTION AT EASTLAKE - LOOKING NORTH

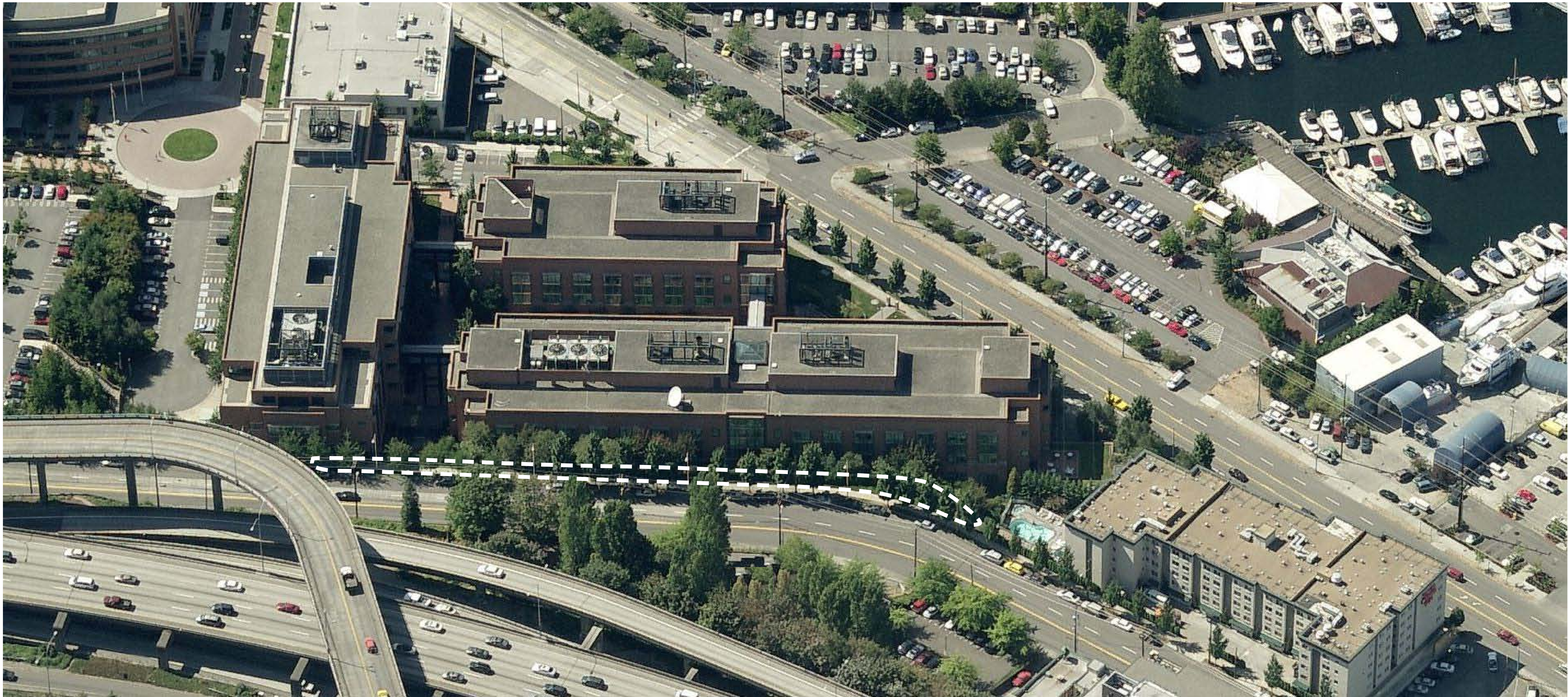






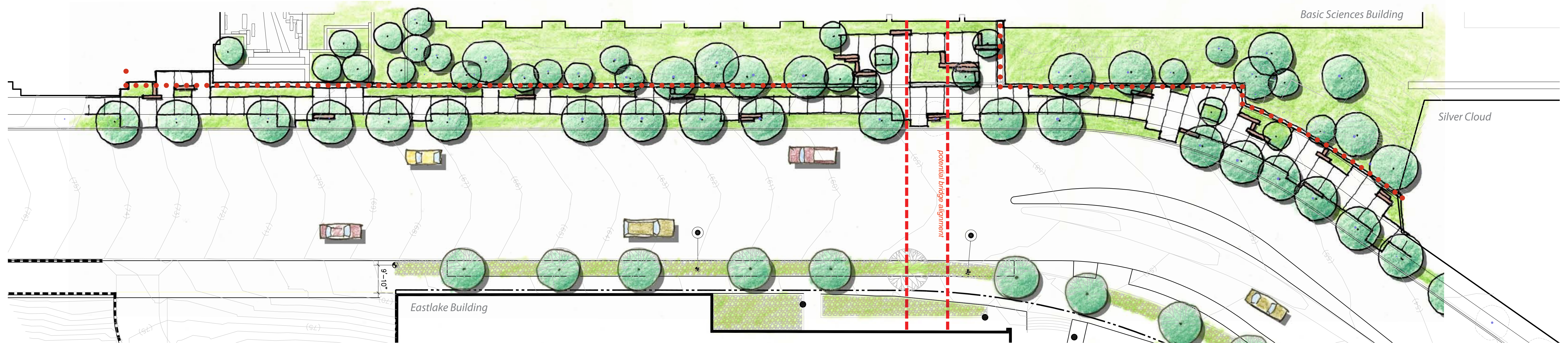
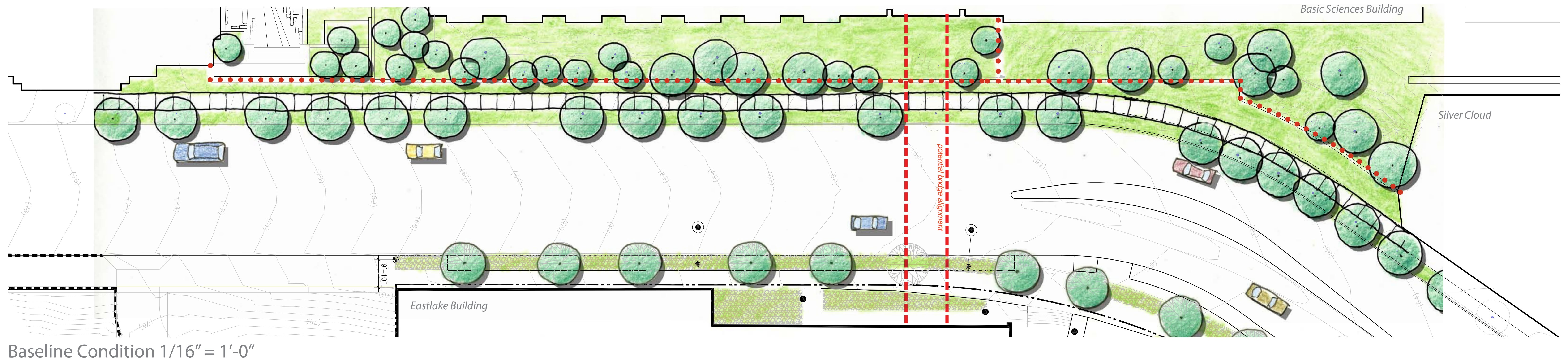


PEDESTRIAN BRIDGE - LOOKING NORTH



Goals

- Provide usable public open space.
- Introduce texture and fragrance to the streetscape.
- Continue campus family of stone benches and furniture elements.
- Consider potential for integrated art work.
- Provide wider sidewalk at parking pay stations to accommodate pedestrians.



STREETSCAPE