



# SEATTLE FIRE STATION 6

## Seattle Design Commission 2 - Schematic Design Review

### CITY OF SEATTLE

Project Manager, FFD/CPD: David L. Jackson

SFD Liason: Molly Douce

Public Art Project Manager: Jason Huff

### DESIGN TEAM

Architect:	Weinstein A U
Landscape:	Murase Associates
Structural:	Swenson Say Faget
Civil:	Magnusson Klemencic Associates
Mechanical:	Stantec
Electrical:	Travis Fitzmaurice
Public Artist:	Steve Gardner





## PROJECT SCOPE

Relocation of Fire Station 6 from existing 7,000 SF (approx.) building on 23rd Avenue South & East Yesler Way to a new 11,400 SF (approx.) building on South Jackson Street & Martin Luther King Avenue South. New building will accommodate an engine truck and a ladder truck and eight on-duty personnel.

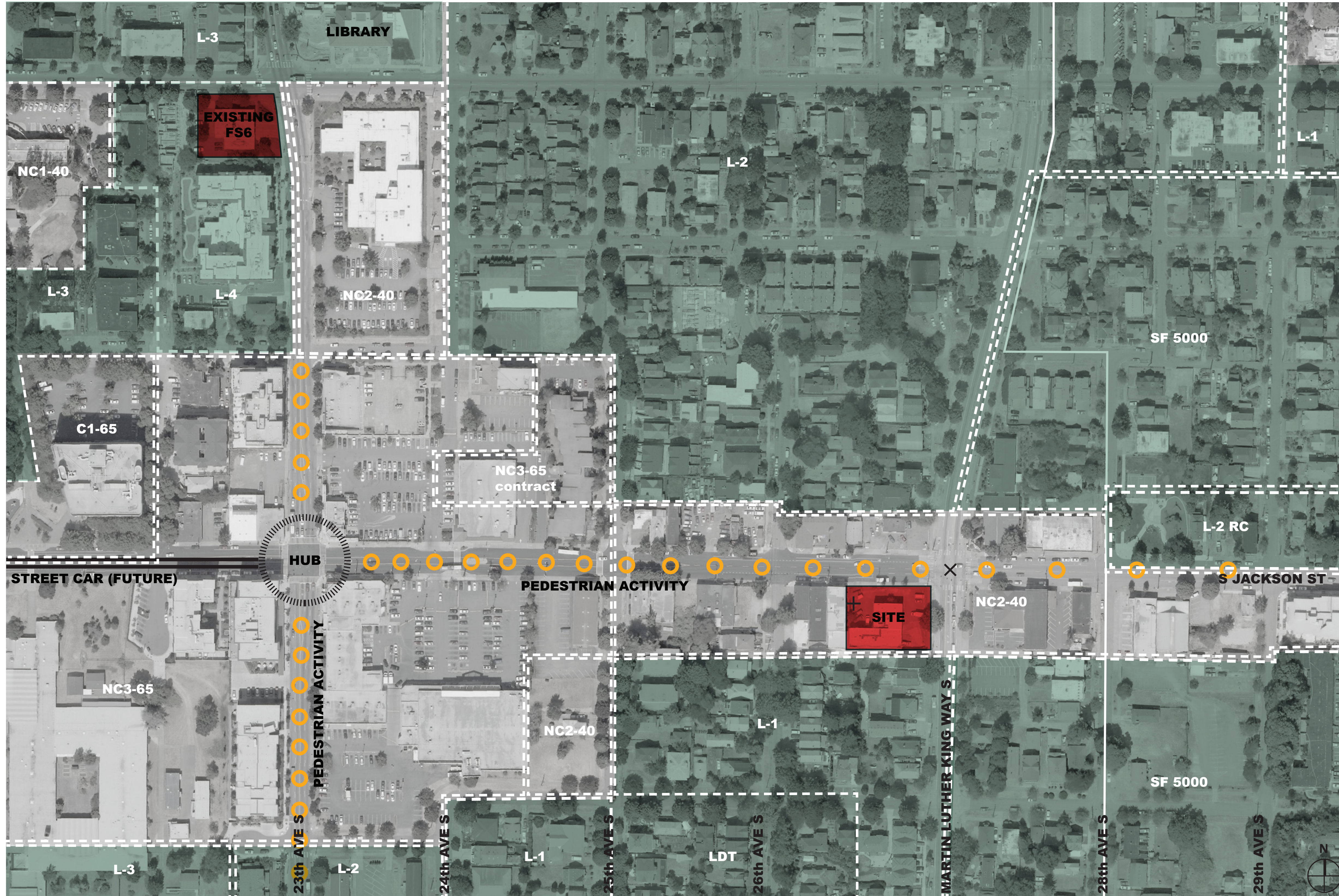
## PROJECT BUDGET

MACC: \$4,000,000

Total Project Budget: \$10,400,000, per Levy

## PROJECT SCHEDULE

Bidding anticipated 4th Quarter of 2010  
12 - month construction period



### NEIGHBORHOOD

23rd & Union/Jackson Residential Village in Seattle's Central District. Mixed NC and L zones, and SF 500 zones.

- NC2-40: 40' (Neighborhood Comm. 40')
- NC3-65: 65' (Neighborhood Comm. 65')
- C1-65: 65' (Commercial 1)
- L-1: 25' (Lowrise 1)
- L-2: 25' (Lowrise 2)
- L-3: 30' (Lowrise 3)
- L-4: 37' (Lowrise 4)
- LDT: 25' (Lowrise Duplex/Triplex)
- SF5000: (Single Family)

### SITE INFORMATION

Zoning: NC-40'  
 23rd & Union/Jackson Residential Village  
 15,400 SF  
 Street Level Development Standards  
 Green Factor

### BUS SERVICE

- #14 (Downtown - Mount Baker)
- #8 (Seattle Center)
- #27 (Colman Park)





Apartment to South of site



Alley looking West



Alley looking East



looking North on MLK

1



2



looking West on Jackson

3



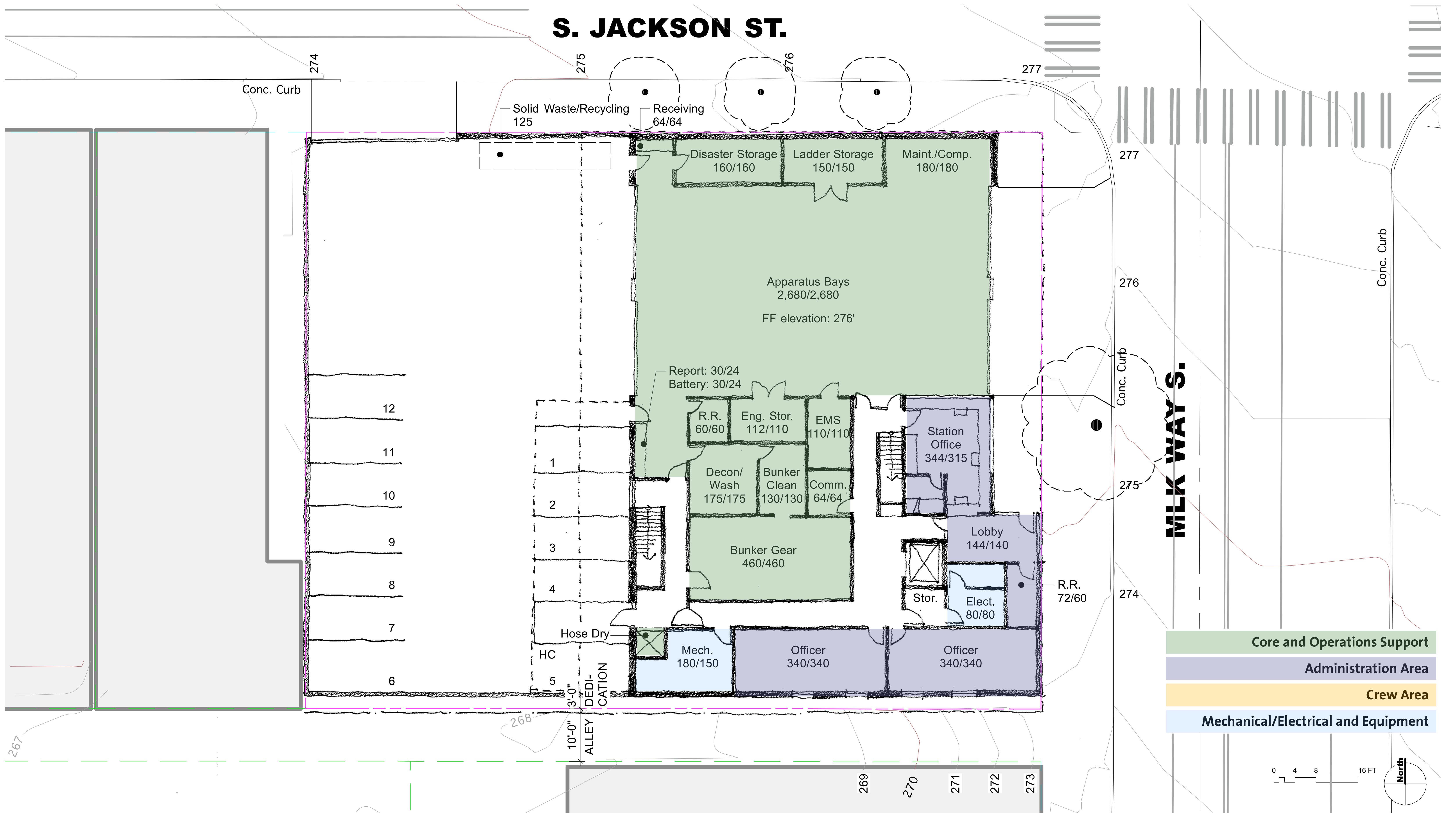
looking East on Jackson

3



looking South on MLK

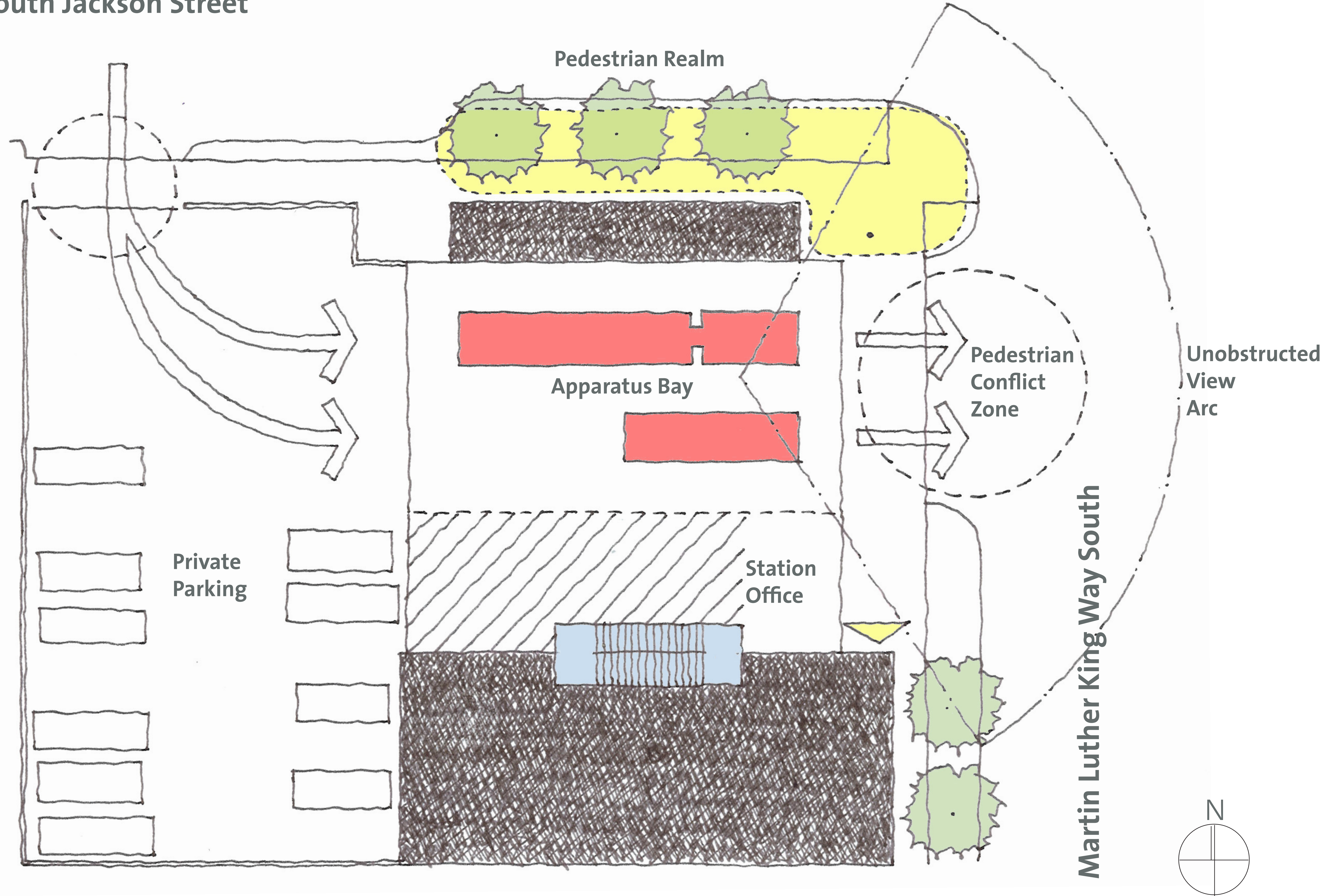
4

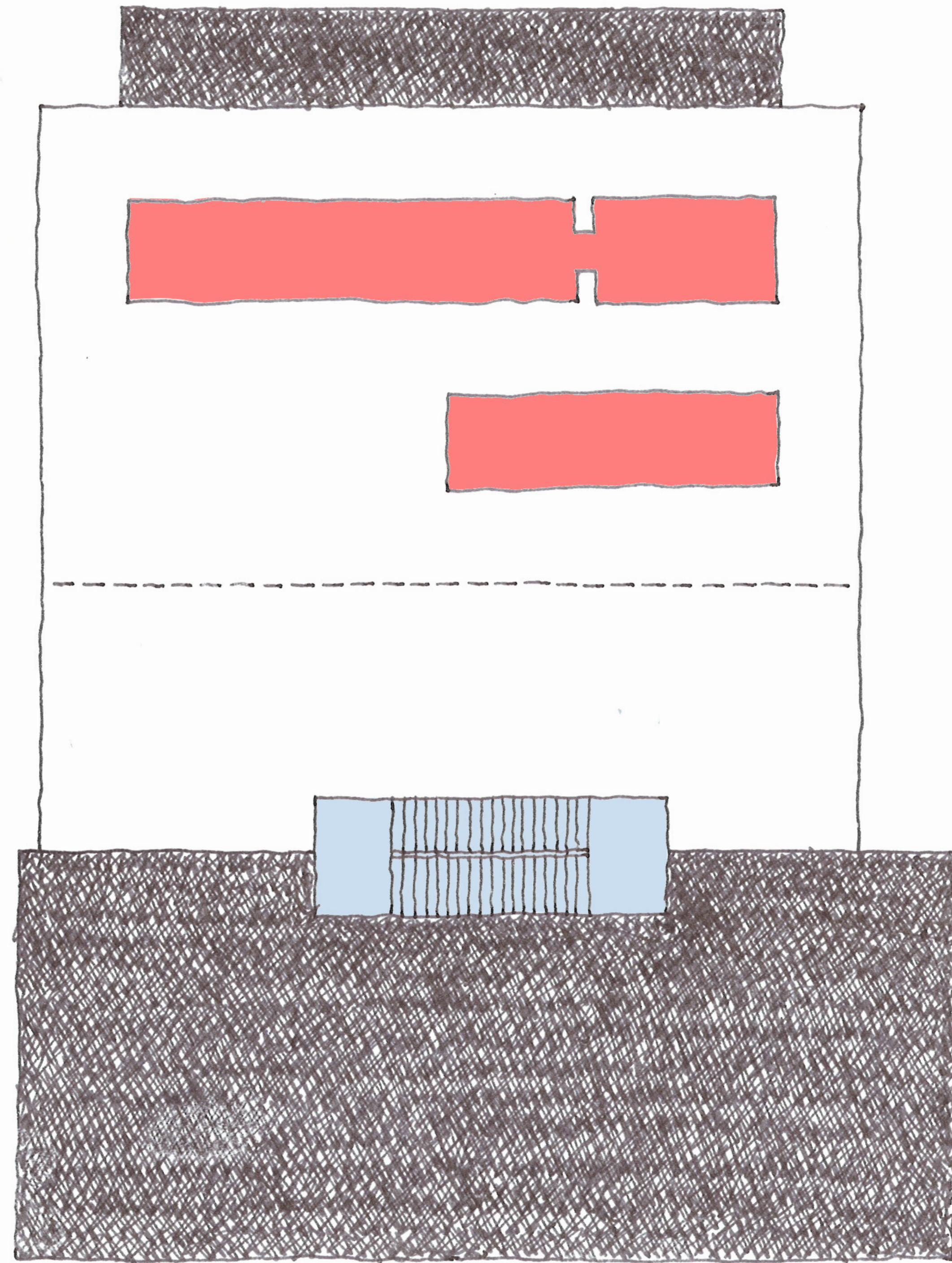






## South Jackson Street



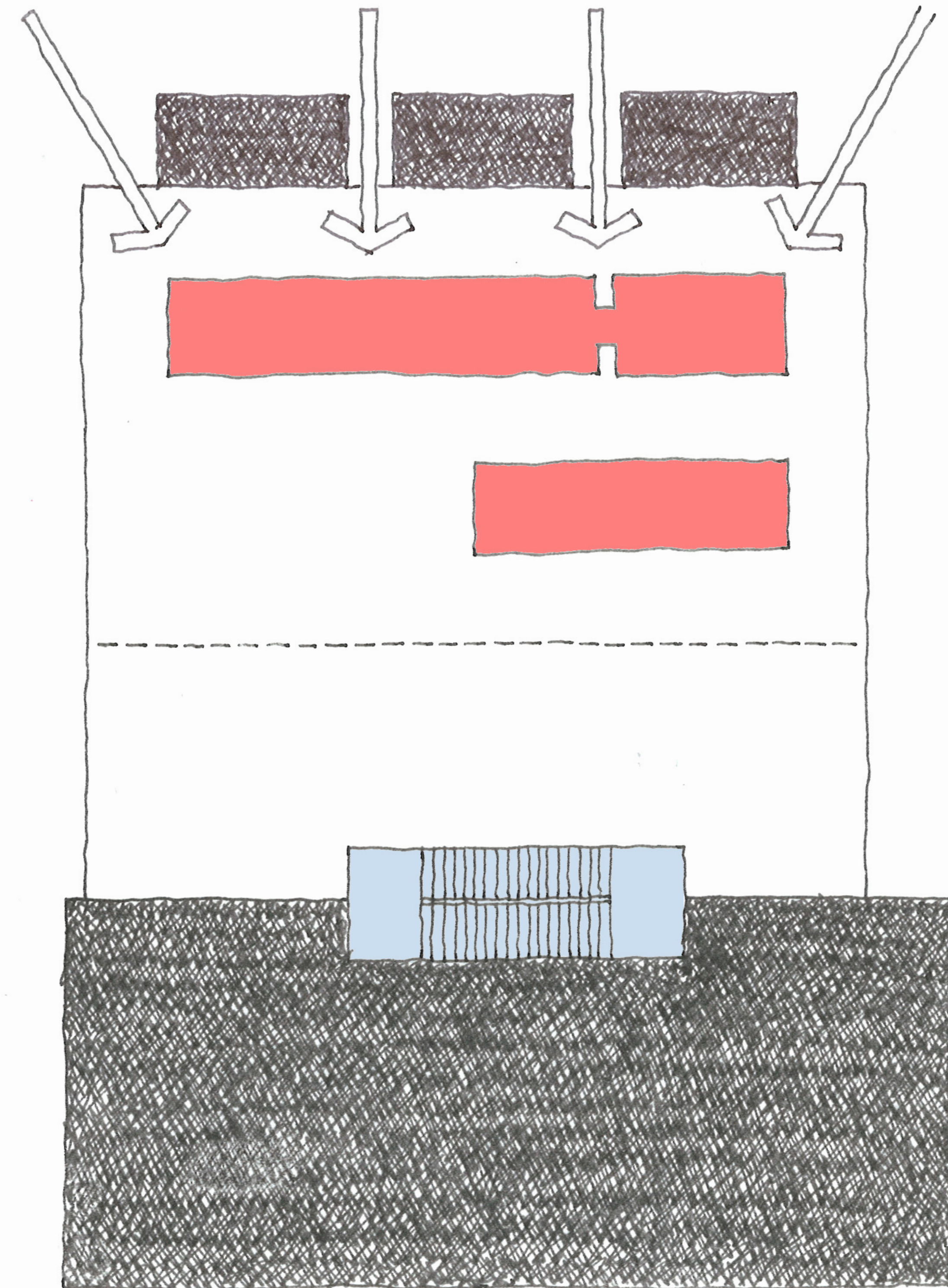


Closed - Passive  
Open - Active

Open - Active  
Closed - Passive

## Zoning Diagram

Visually Permeable from Public Realm  
Activation of Public Realm



Closed - Passive  
Open - Active

Open - Active  
Closed - Passive

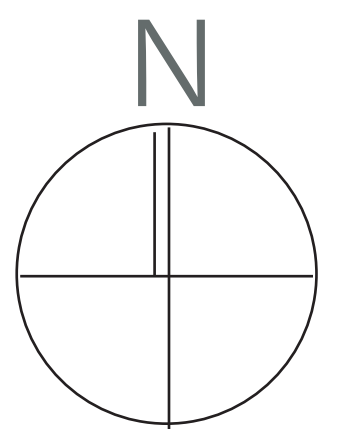
## Permeable Zoning Diagram



South Jackson Street

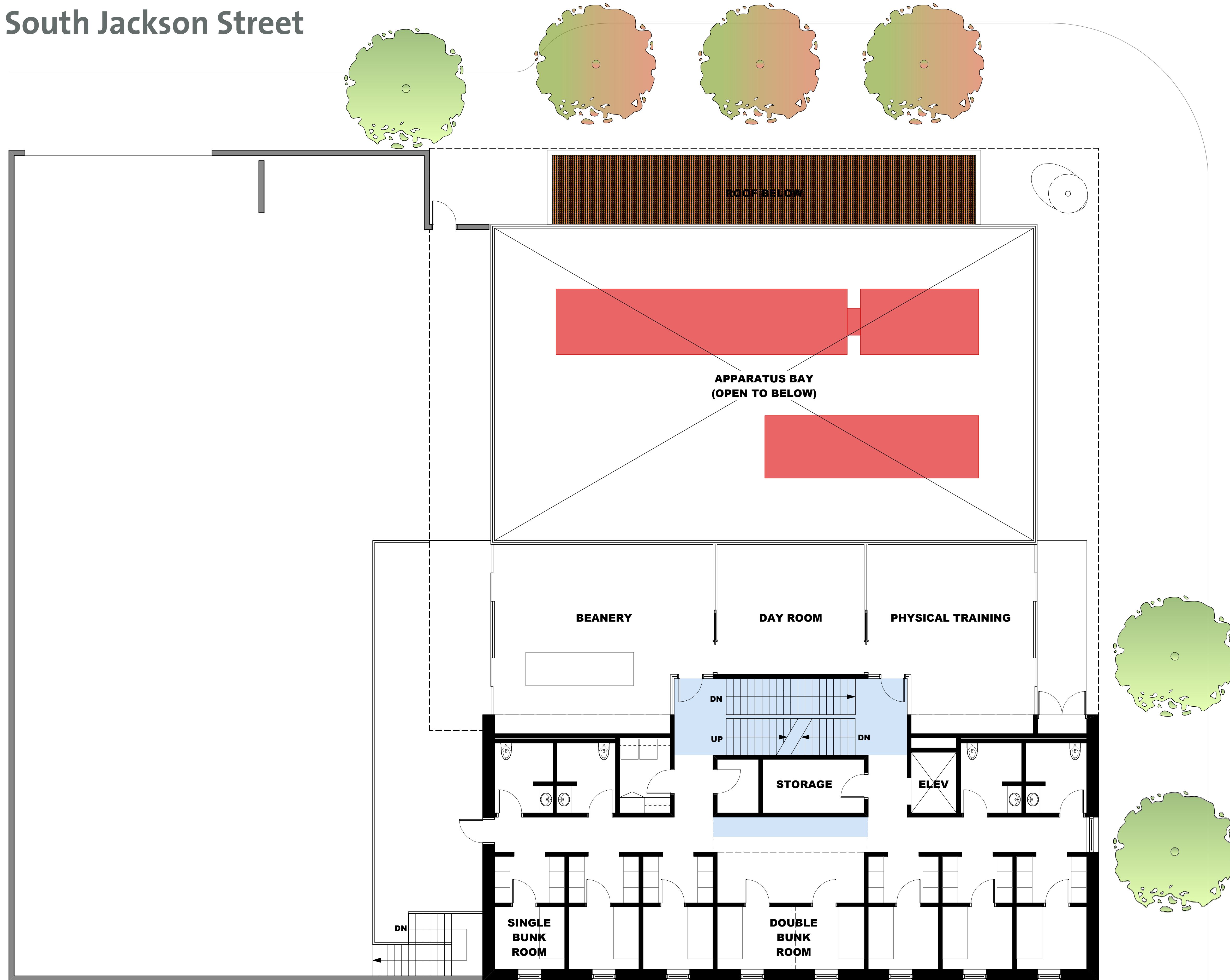


Martin Luther King Way South

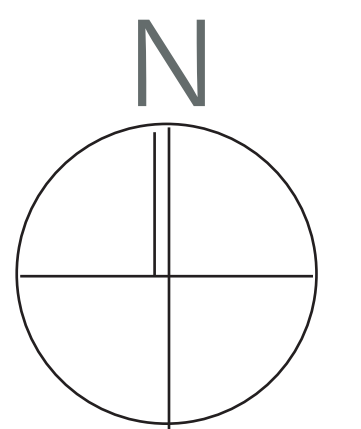




South Jackson Street

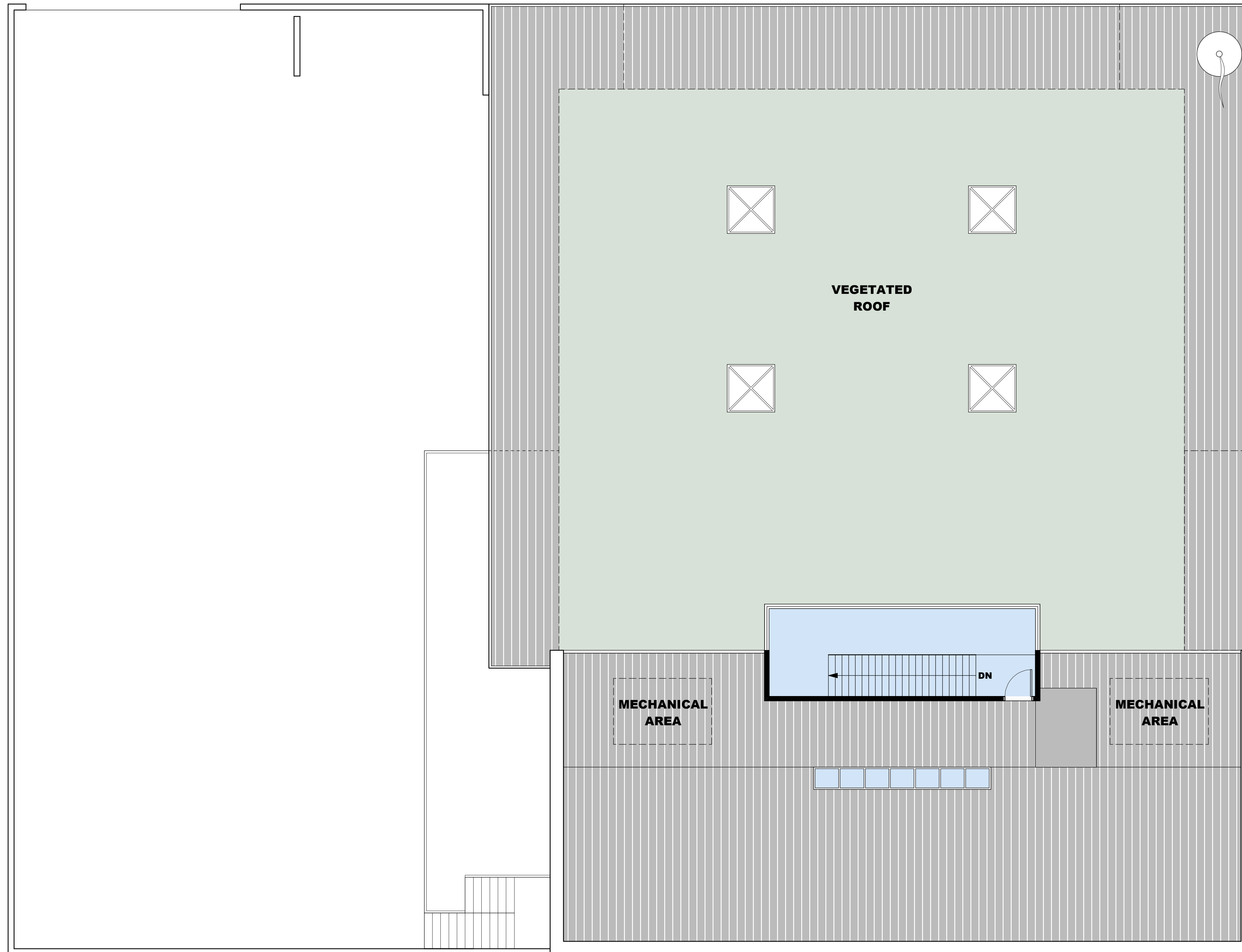


Martin Luther King Way South

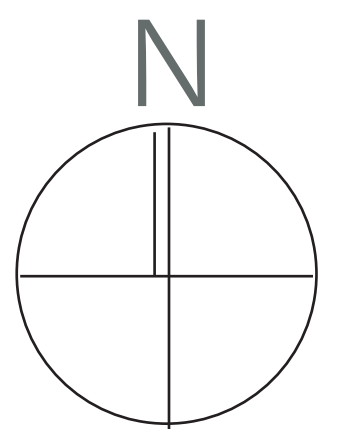


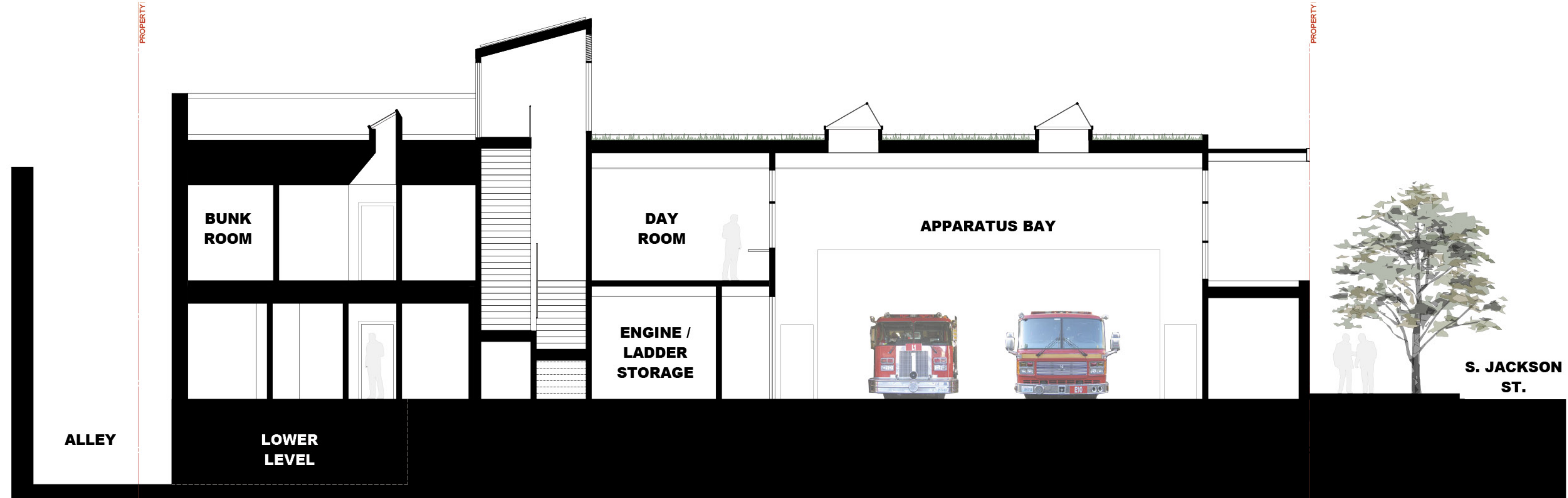
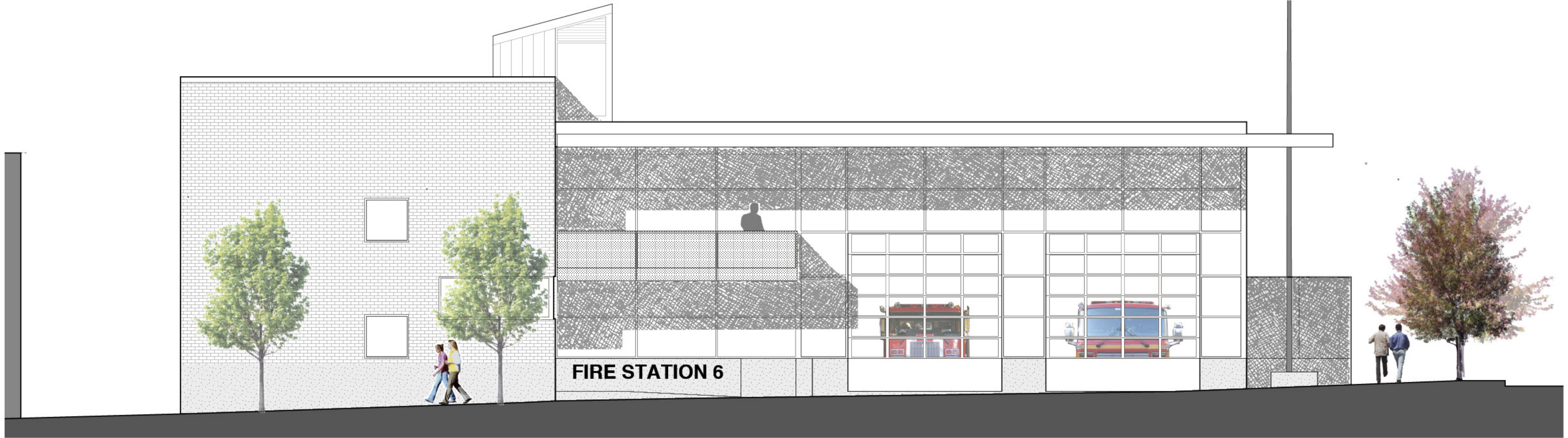


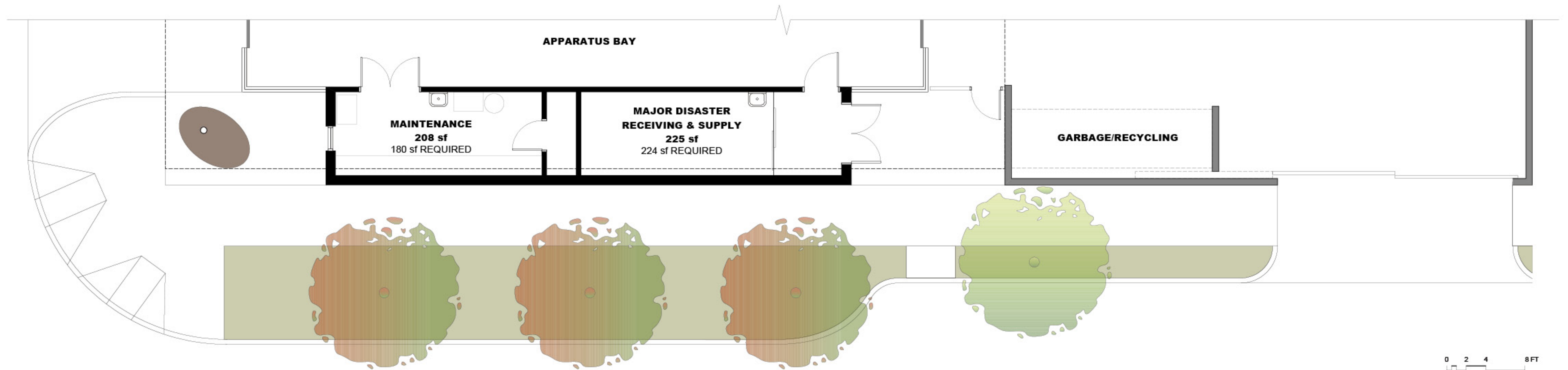
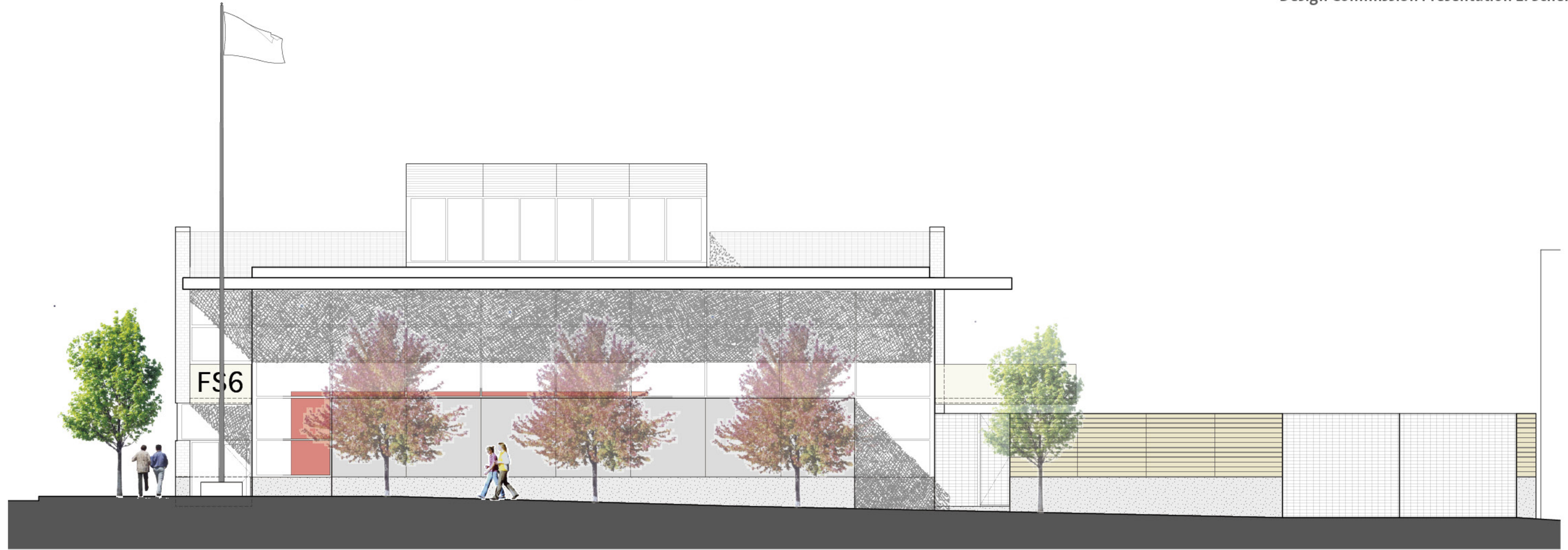
## South Jackson Street

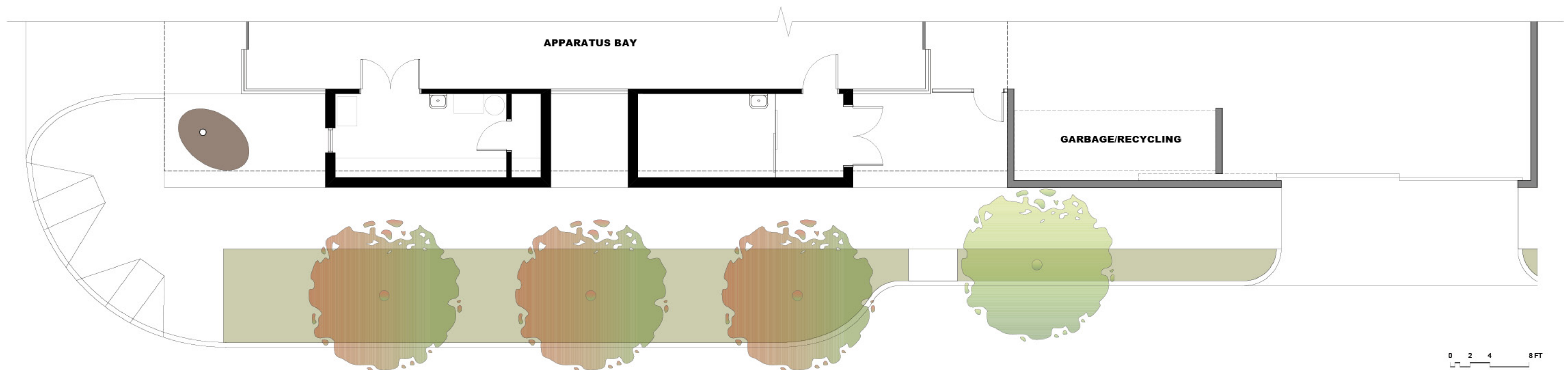
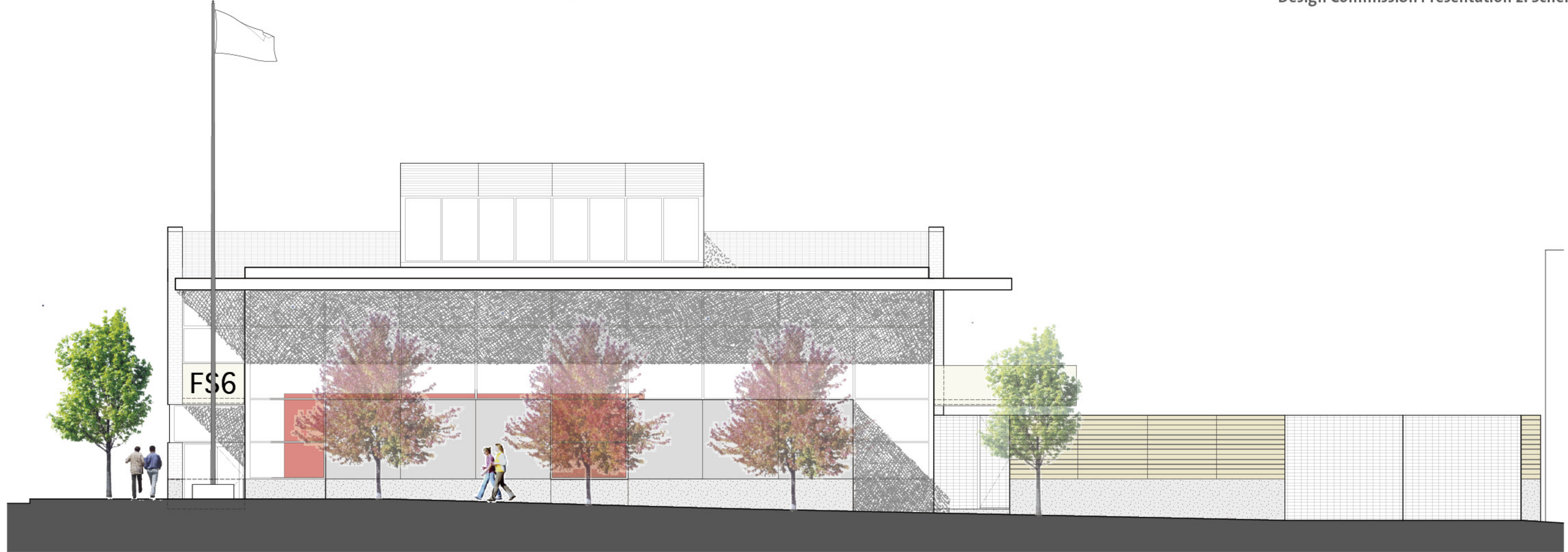


Martin Luther King Way South











PROJECT DATE:  
10/15/09

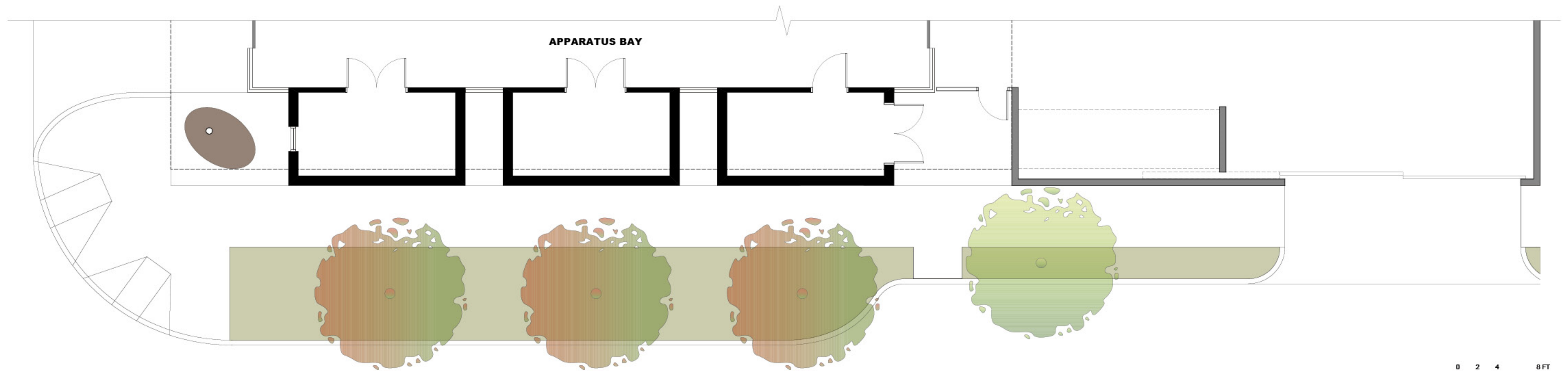
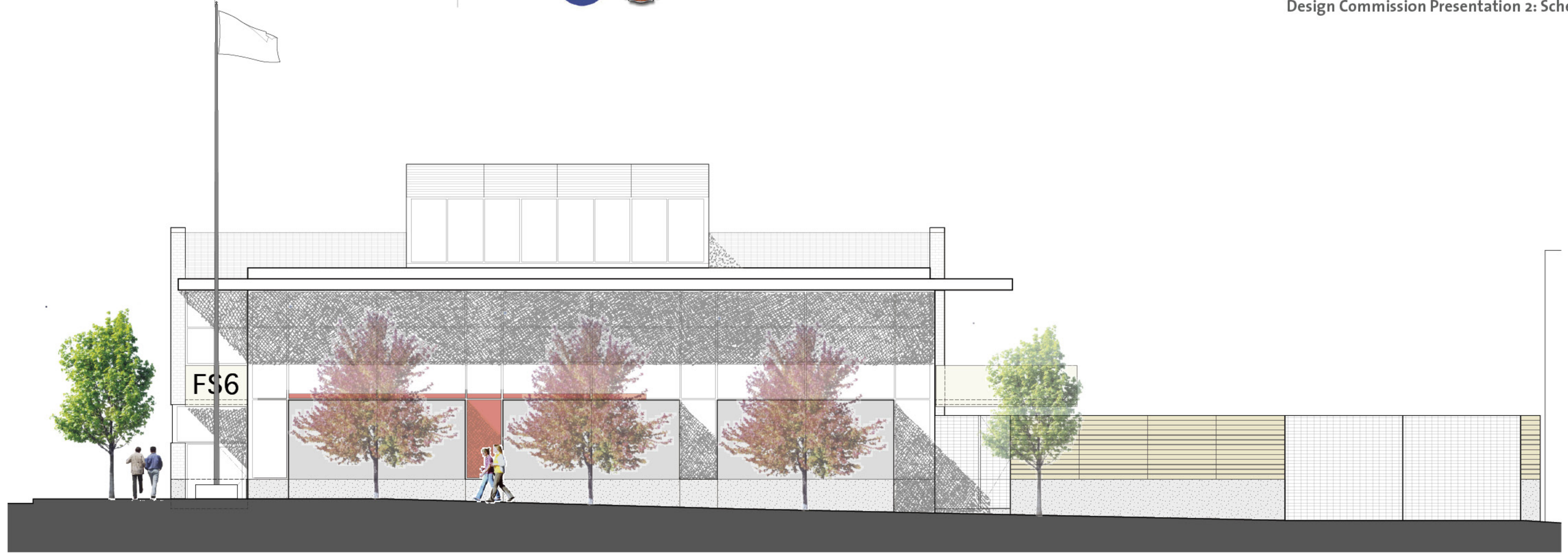
LOCATION:  
Seattle, WA

PARTNERS:



# Seattle Fire Station 6

Design Commission Presentation 2: Schematic Design



**Alternative B**

121 Stewart Street, Suite 200  
Seattle, Washington 98101

Telephone 206 443 8606  
Facsimile 206 443 1218

**WEINSTEIN AU** ARCHITECTS + URBAN DESIGNERS LLC

PROJECT DATE:  
10/15/09

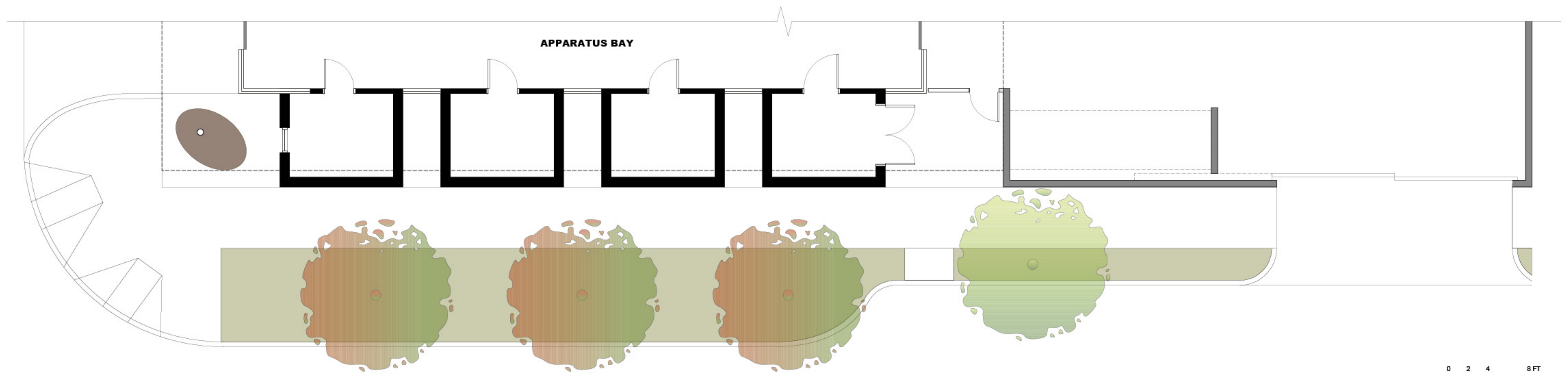
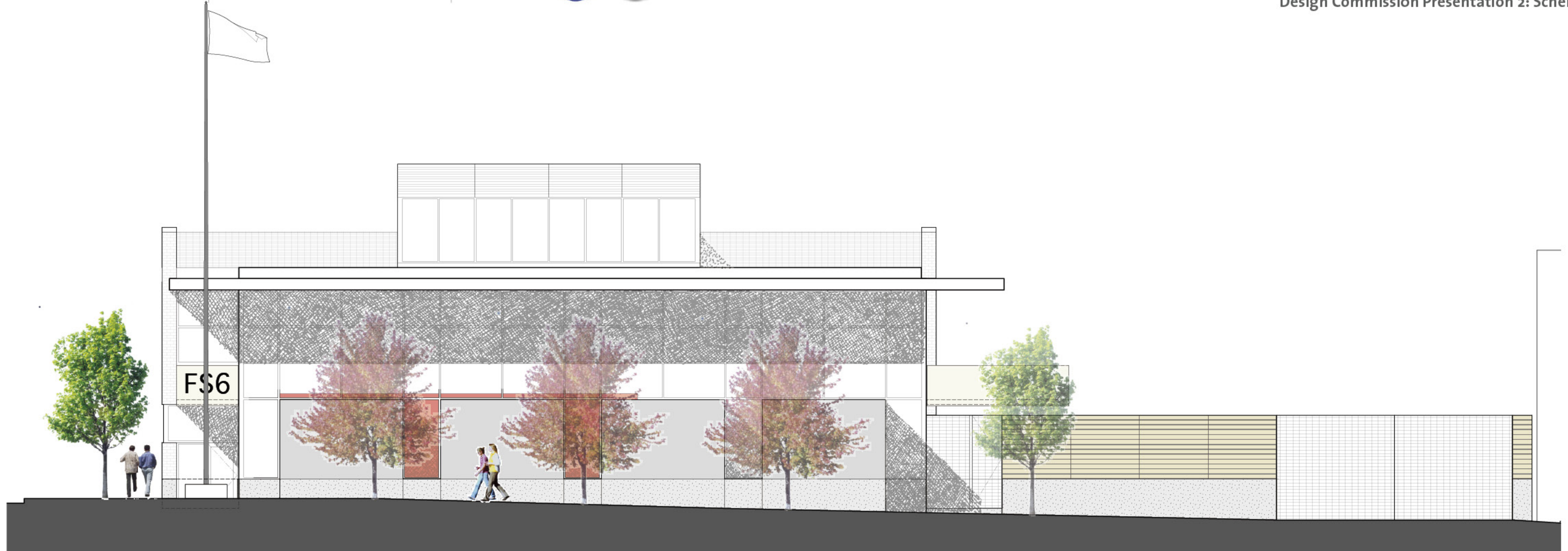
LOCATION:  
Seattle, WA

PARTNERS:



# Seattle Fire Station 6

Design Commission Presentation 2: Schematic Design

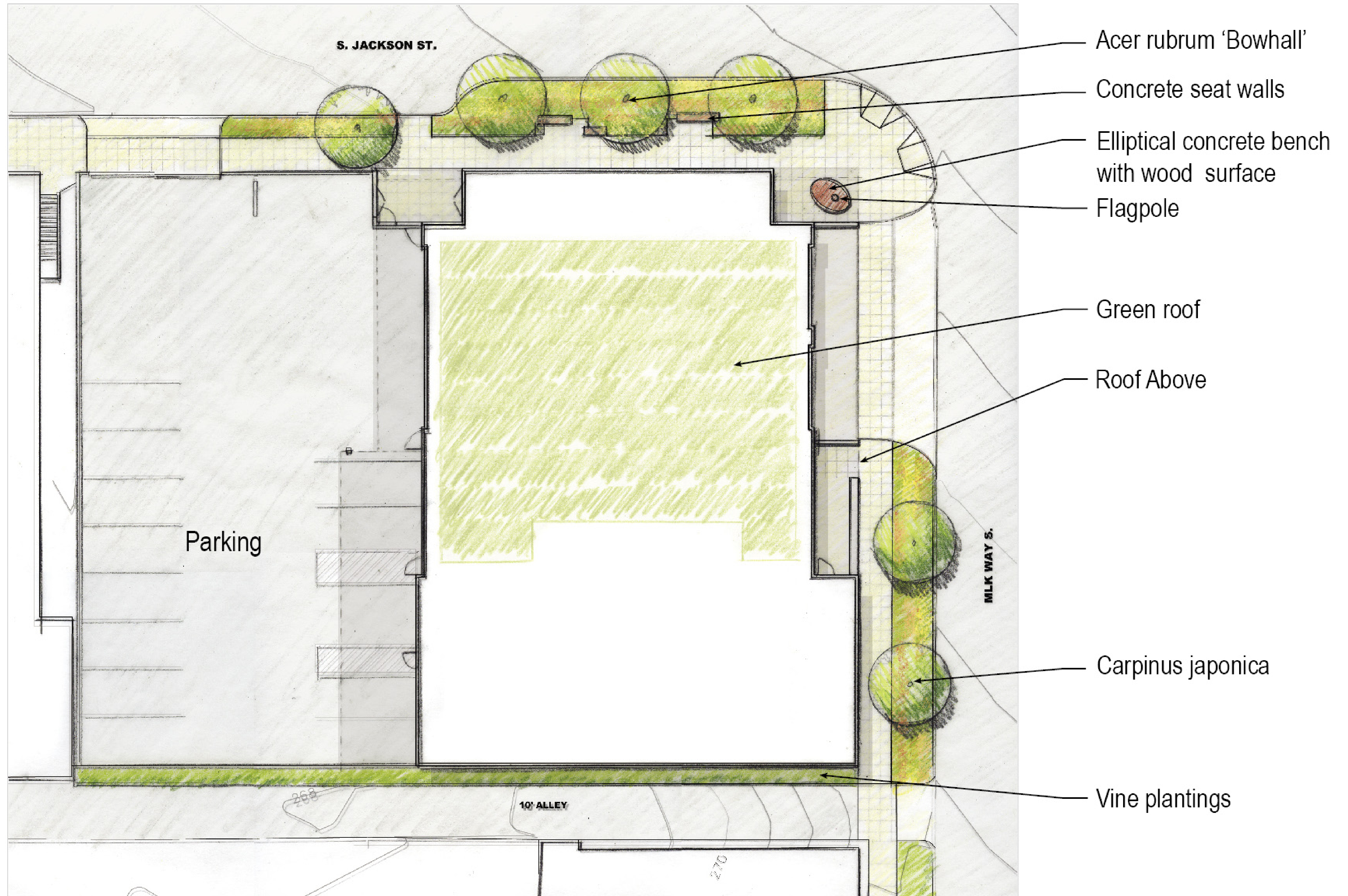


**Alternative C**

121 Stewart Street, Suite 200  
Seattle, Washington 98101

Telephone 206 443 8606  
Facsimile 206 443 1218

**WEINSTEIN AU** ARCHITECTS + URBAN DESIGNERS LLC





*Acer rubrum* 'Bowall' (Bowhall Maple)



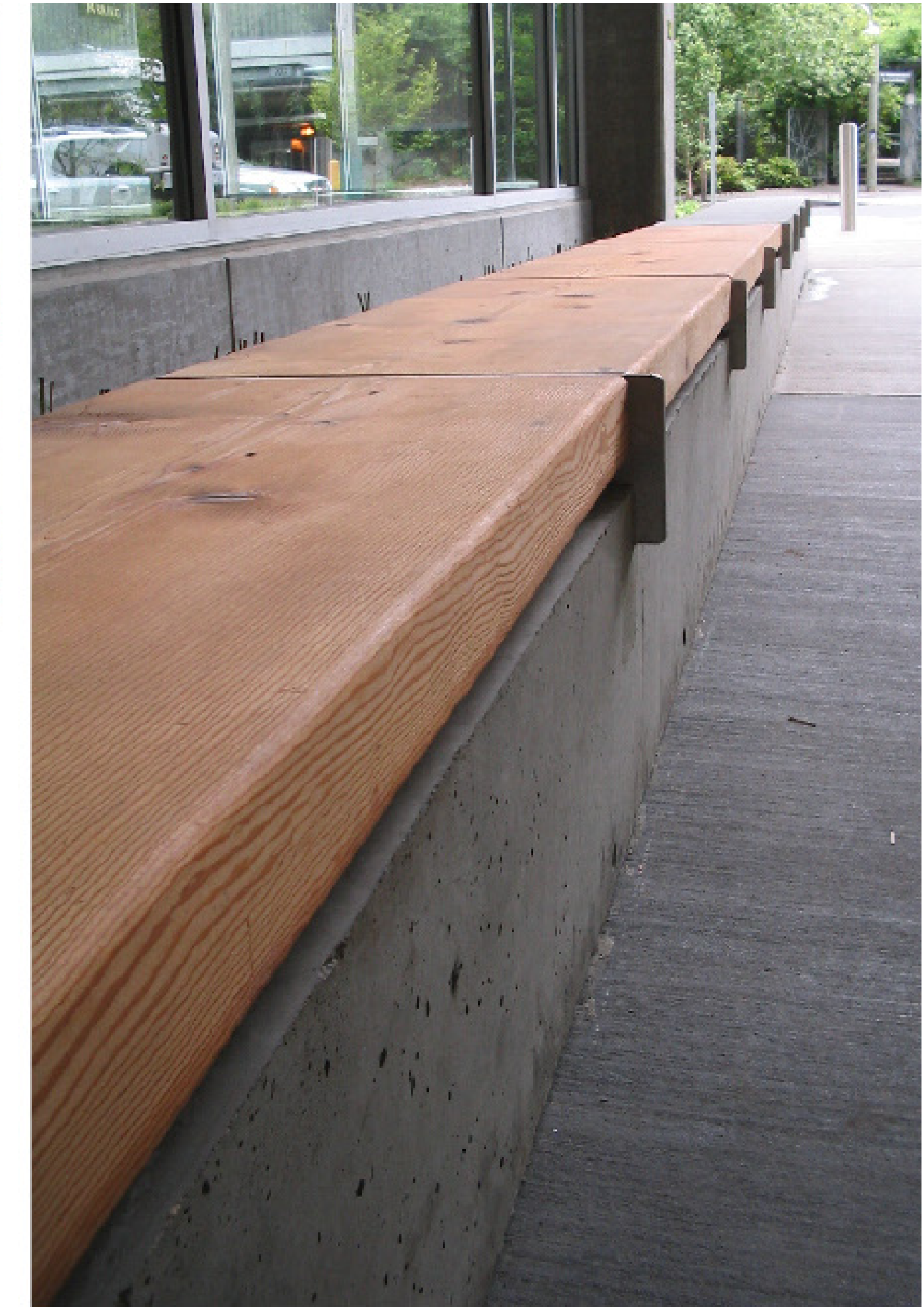
*Carpinus japonica* (Japanese Hornbeam)



*Sedum* 'Autumn Joy'



*Rudbeckia* 'Goldstrum' (Black-eyed Susan)



Alley 24 (Seattle)



*Hemerocallis* 'Stella D'Oro' (Stella Daylilly)



*Euphorbia robbiae* (Robb's Euphorbia)



*Liriope spicata* (Lilyturf)



**Louisiana LaSalle Building**  
Baton Rouge, LA



**“Sky Legends” (View of West Entry Artwork)**  
High Point Library, Seattle, WA



**“Making Sense” Railing Installation**  
Glenn Anthen Hall, YVCC  
Yakima, WA