



Seattle Fire Department
Neighborhood Fire Station #39

Design Commission Review – Design Development
6 March 08

MILLER | HULL



Fire Station #39

12705 30th Avenue NE

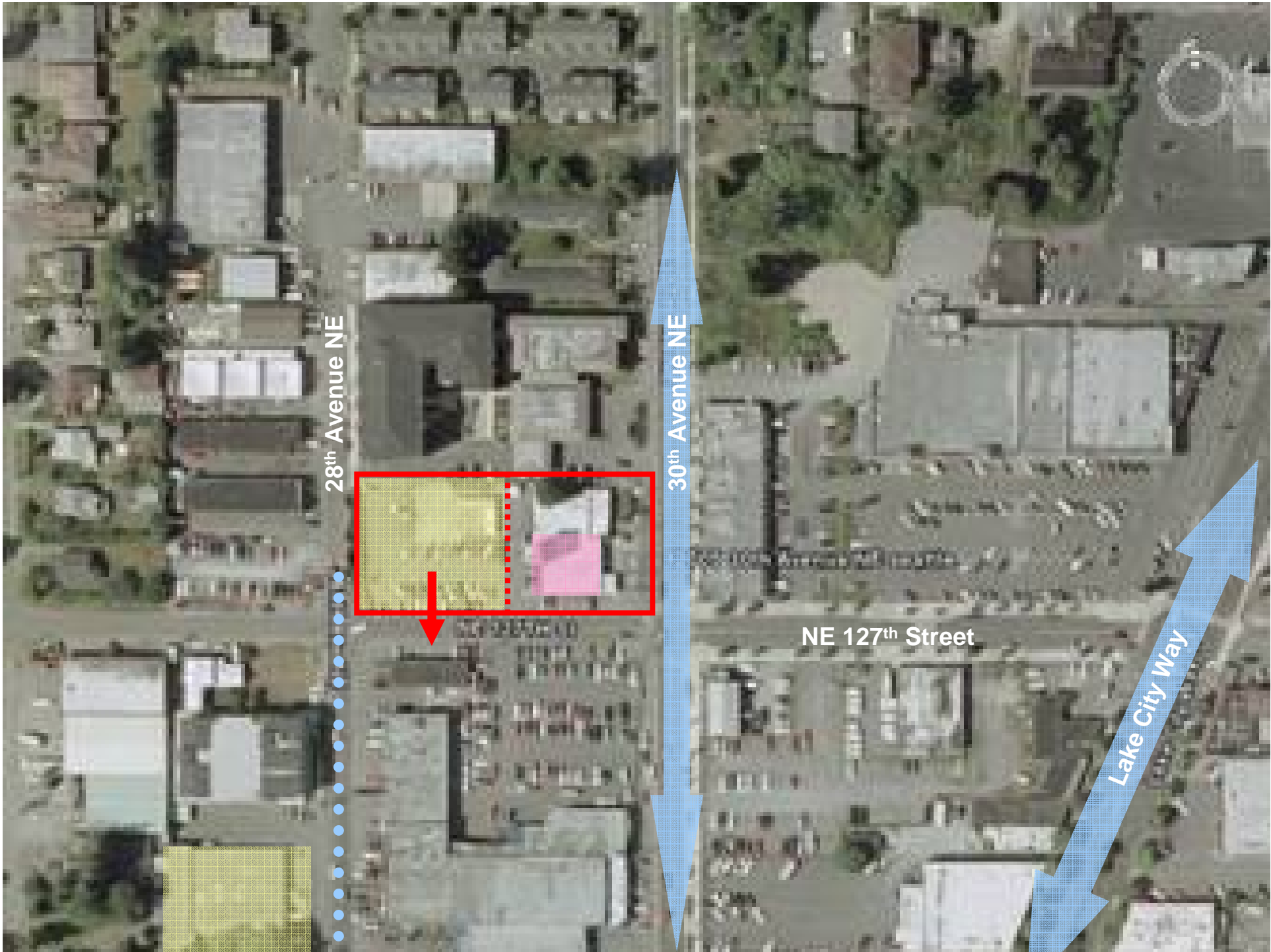
Neighborhood I Station

The existing station is in very poor condition due both to its age and type of construction, and is not suited to renovation.

Station 39 will be rebuilt on its existing site and significantly expanded to 11,200sf.

Station 39 will house one of the City's three new earthquake fragmentation caches.

While the station is under construction, the existing station will continue to provide continuity of fire and aid service until the new station project is complete.

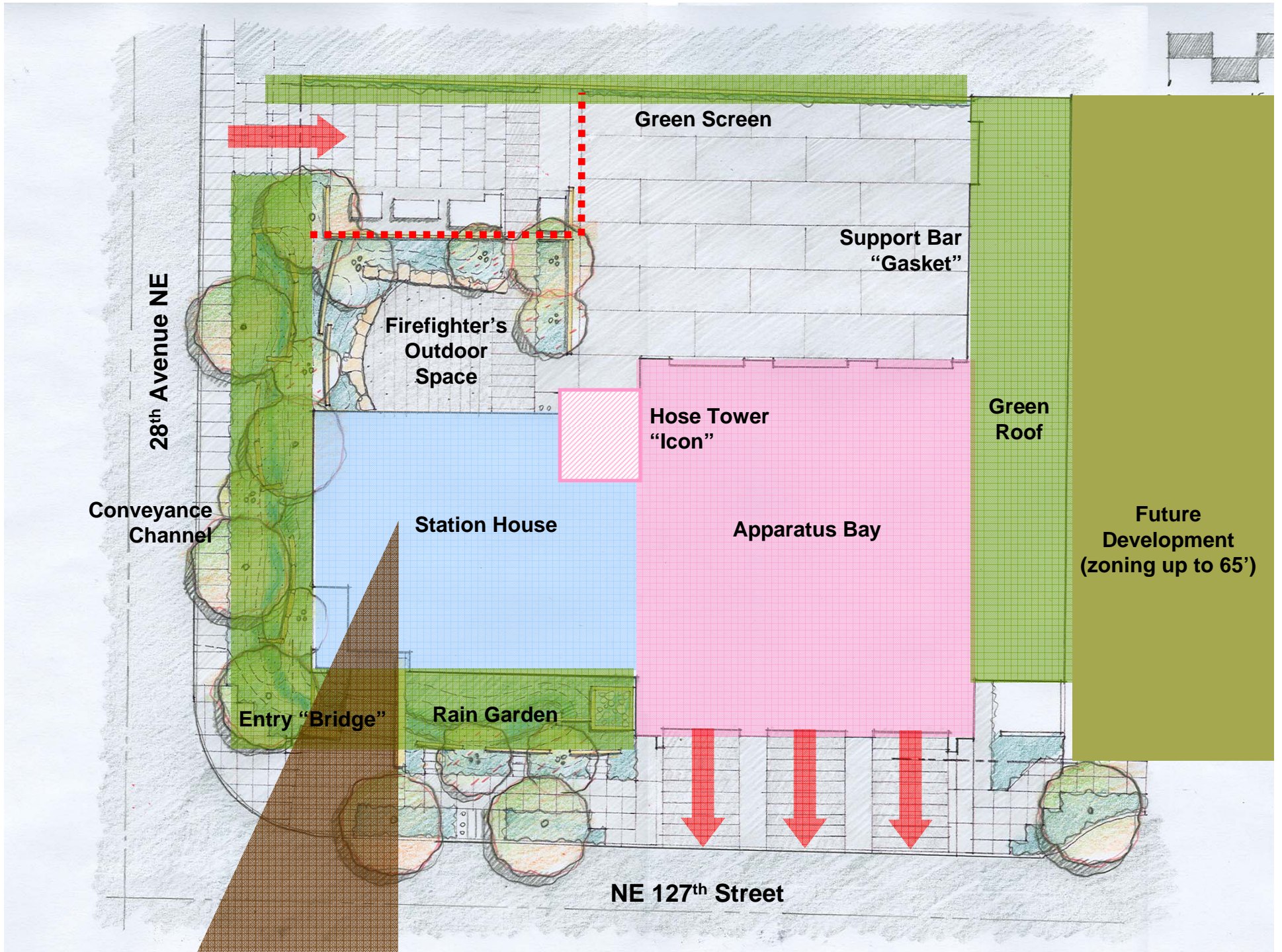


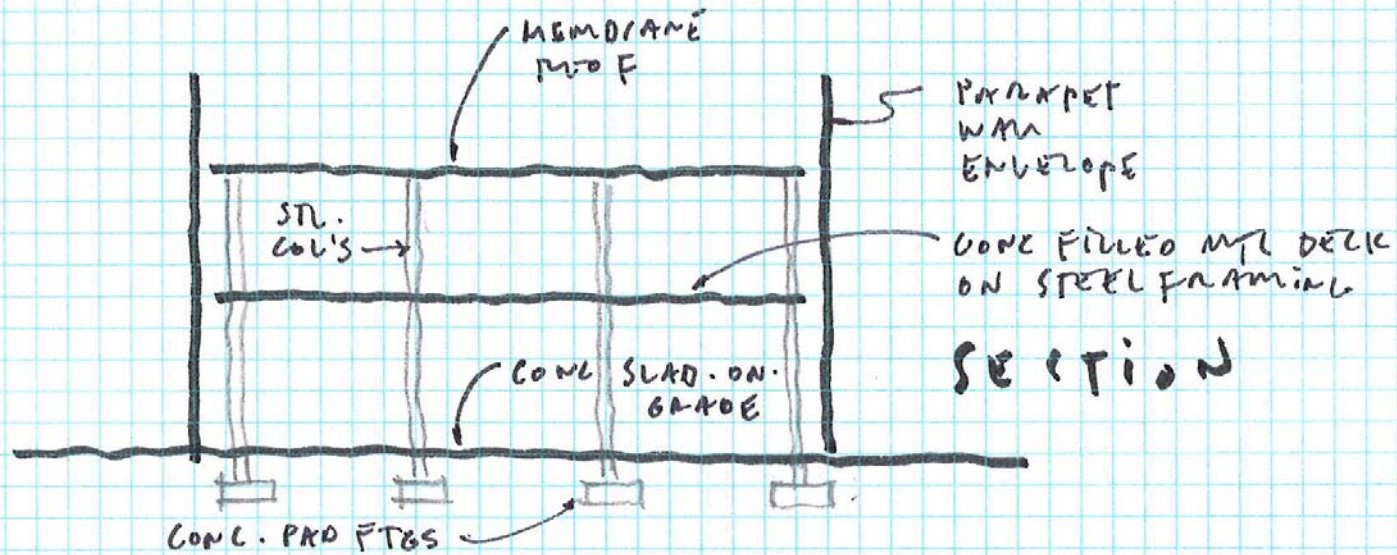
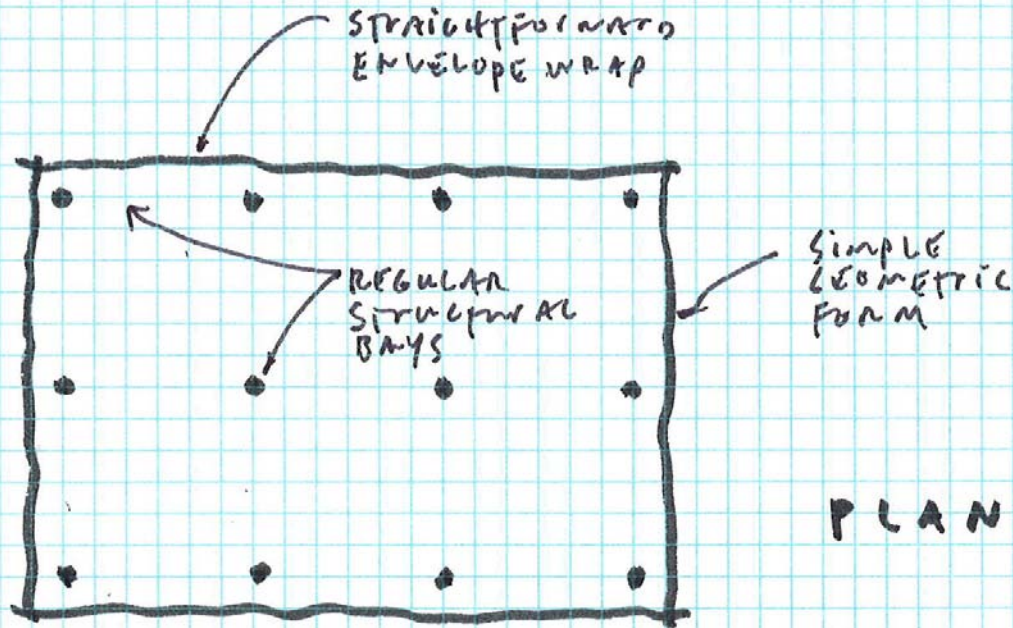
28th Avenue NE

30th Avenue NE

NE 127th Street

Lake City Way







Design Commission Comments

Schematic Design Presentation

6 December 2007

Commended the project for:

simplicity of building, structure & envelope
selecting cladding that ties to the neighborhood
service center on 28th

developing sustainable stormwater ROW
improvements

development of landscape amenities

functionality of the apparatus bay “gasket”

Encouraged team to:

retain the 50' hose tower if possible

better integrate the art and the building

study amount of sunlight into the north terrace

provide more visible green materials

push to achieve LEED Gold if possible



schematic design

Function / Operations

Community / Site

Budget



Function / Operations

5 working meetings with SFD & FFD in DD

received direction from FFD to reduce height of hose tower to 35' max.

fast acting doors to be bid as add. alt.

Community / Site

2nd public open house on 3/1/08

overwhelmingly positive support

enhance urban connections through development of rain garden & storm channel

Budget

project MACC establish by levy program

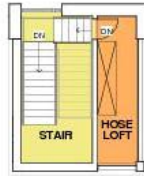
project is on budget at 100% SD

DD estimate will be developed in April 08

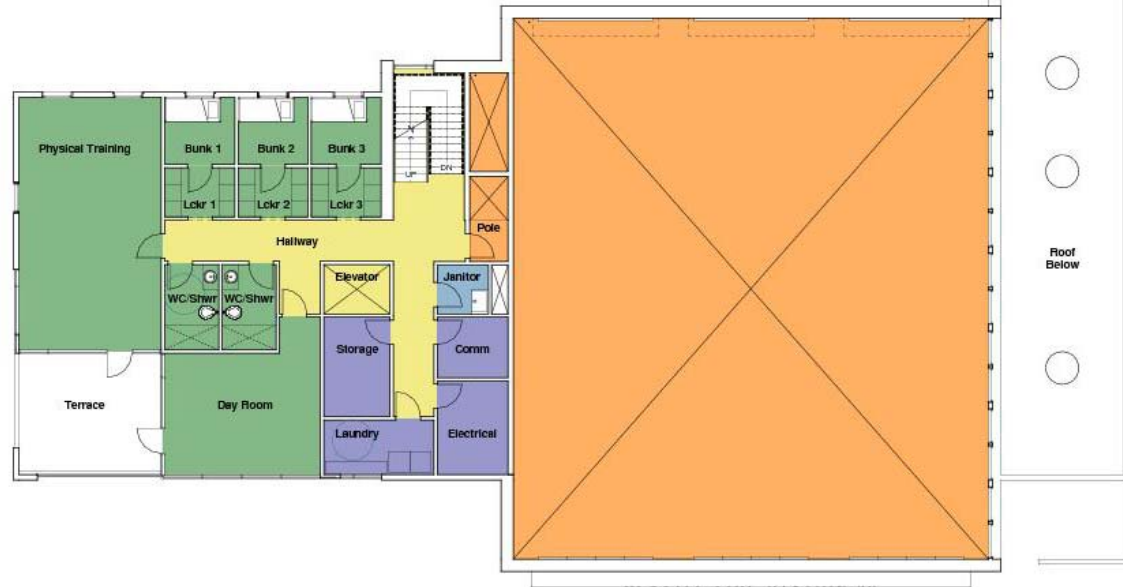
design development



Administration
 Circulation
 Crew Areas
 Equipment
 Operations



2 TOWER LOFT - color
1/8" = 1'-0"



Administration Circulation Crew Areas Equipment Operations

1 Level 2 Floor Plan - color
1/8" = 1'-0"













south elevation

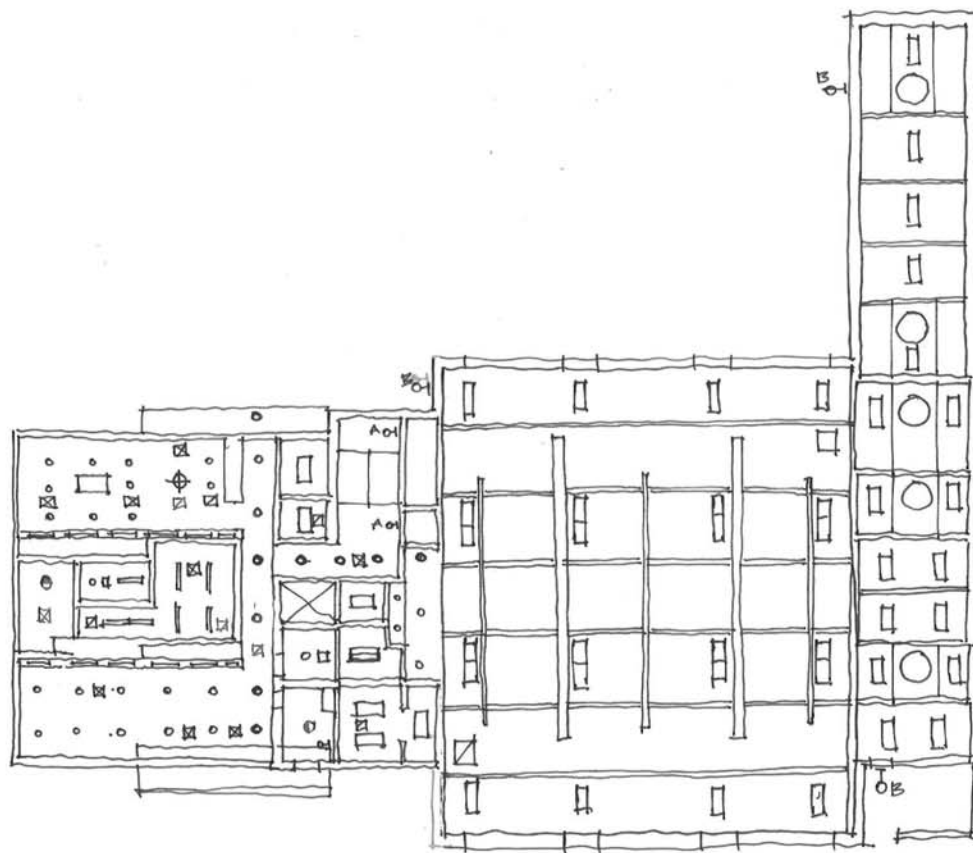


west elevation



n o r t h e l e v a t i o n

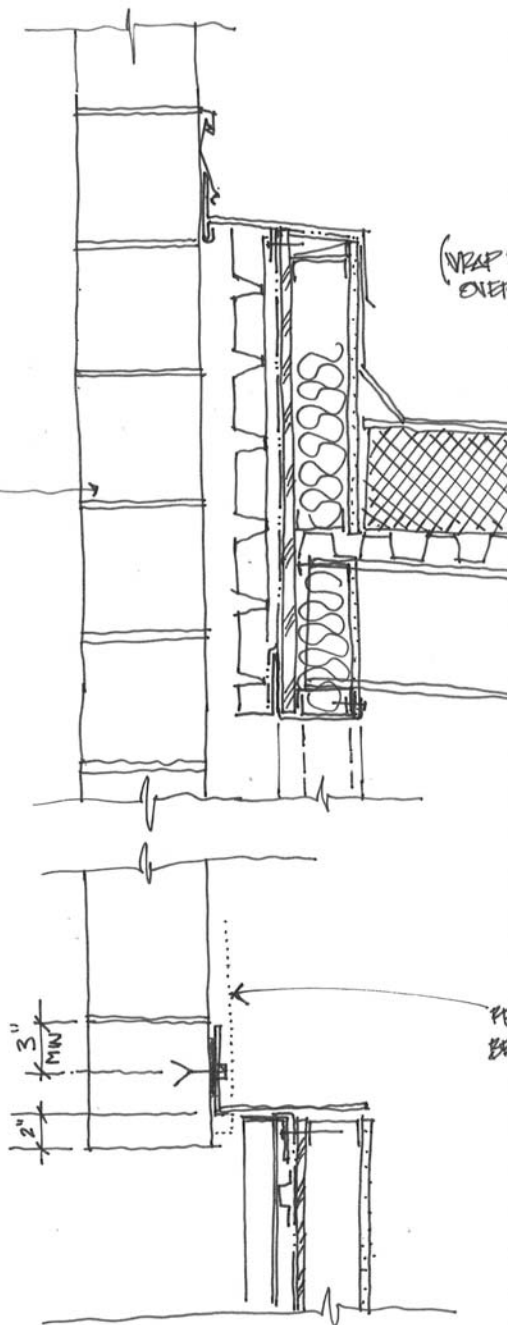
-  CONE W/ REFLECTOR
-  (SEMI-INDIRECT) RECESSED CAN. COMPACT FLUORESCENT
-  COMPACT FLUORESCENT WALL WASHER
-  INDIRECT T-5/F8 PENDANT
-  EXHAUST FAN
-  RETURN
-  SUPPLY
-  VLM SOURCE (TYPE A & B)
-  CHANDELIER
-  T-5 BAFLED DIRECT C/W MIND.



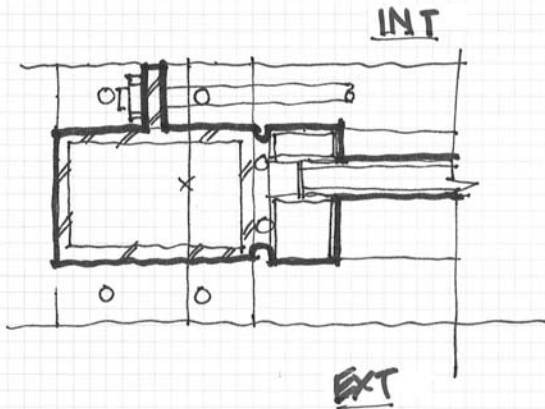
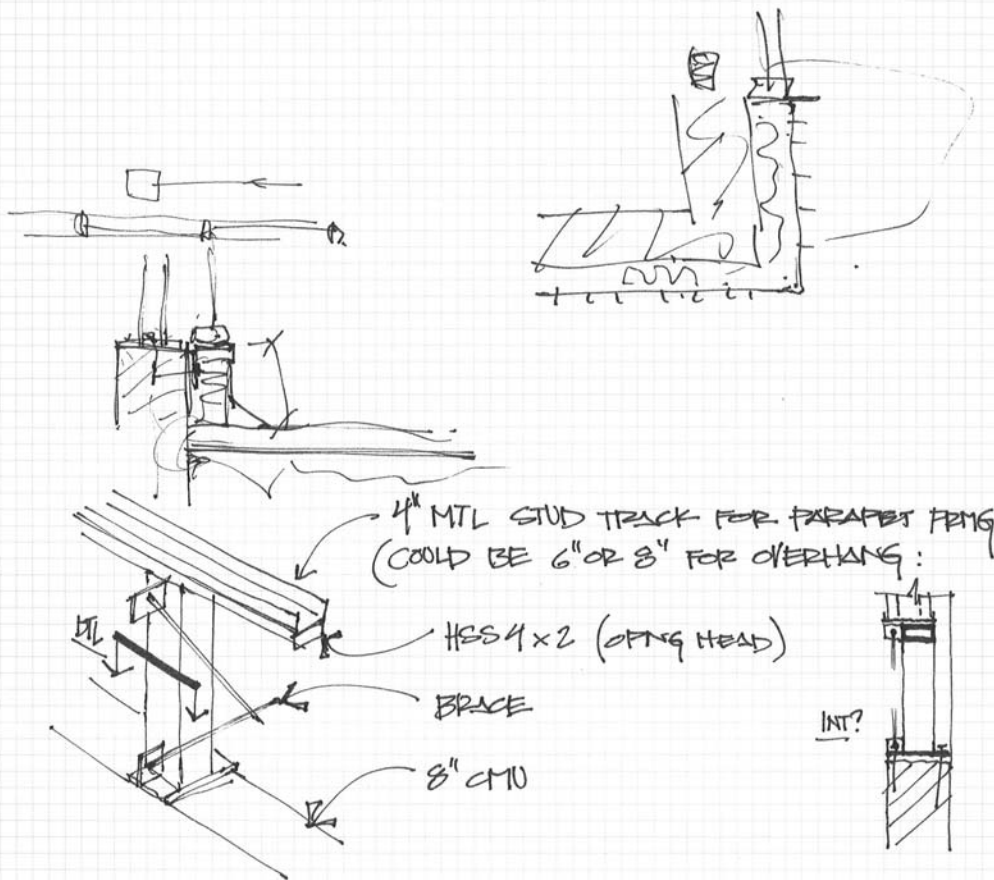
CMU JAMBS
BEYOND

(WRAP
OVER)

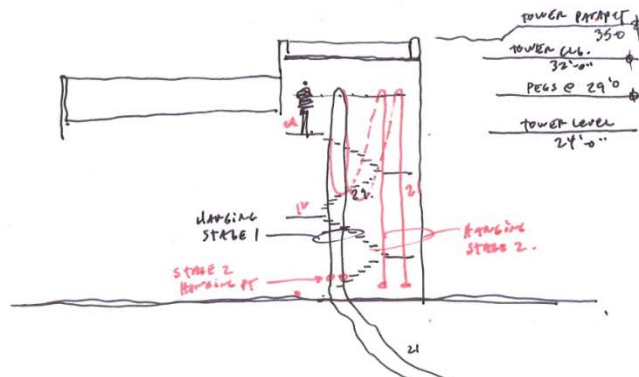
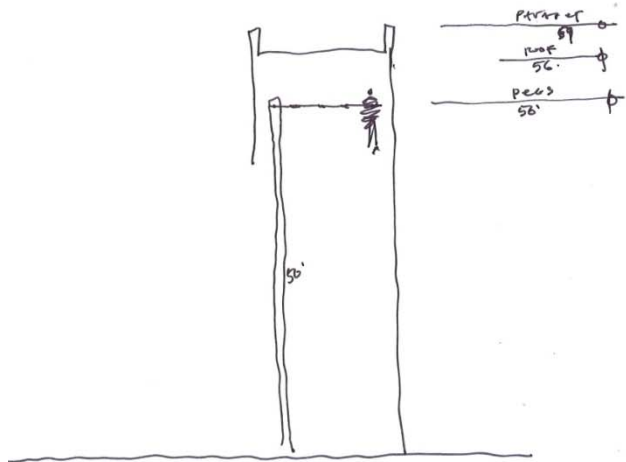
SECTION
PARAPET @
CMU OPENING



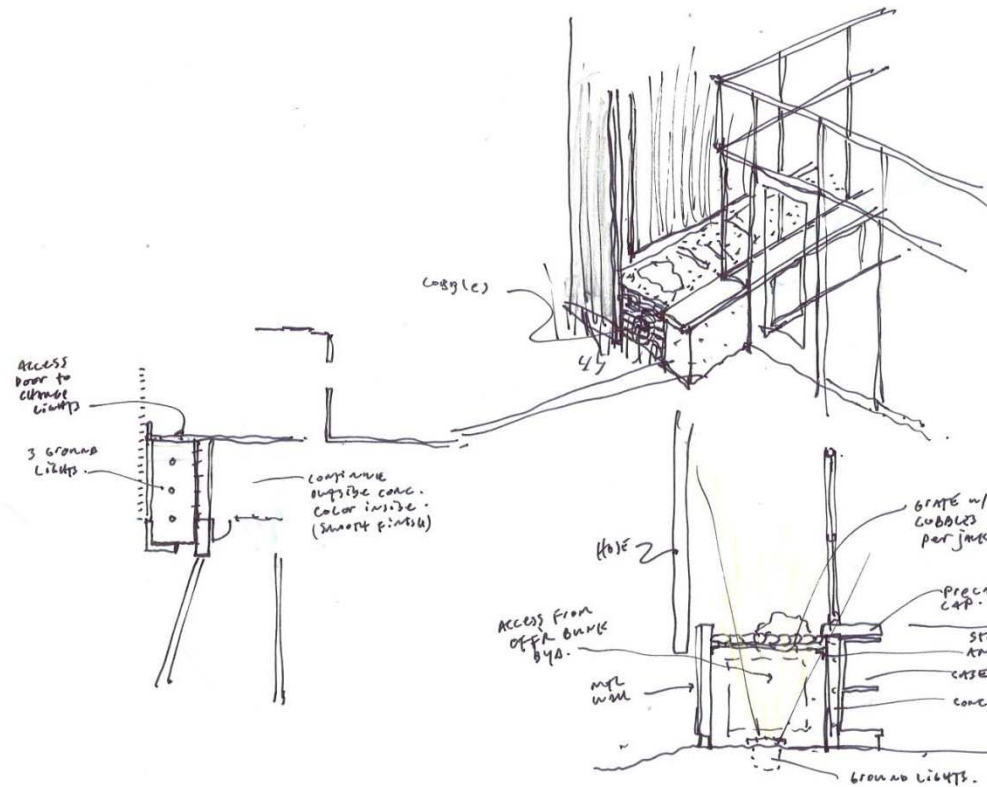
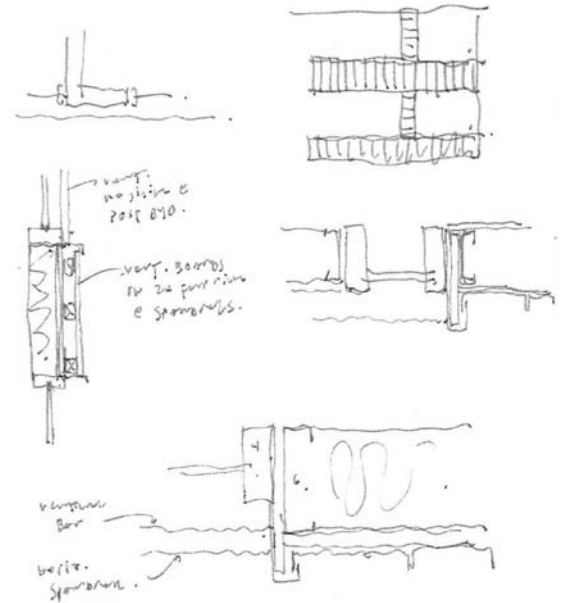
PLAN
PARAPET @
CMU OPENING



WINDOW JAMBS @ BRACED FOR
PLAN DETAIL

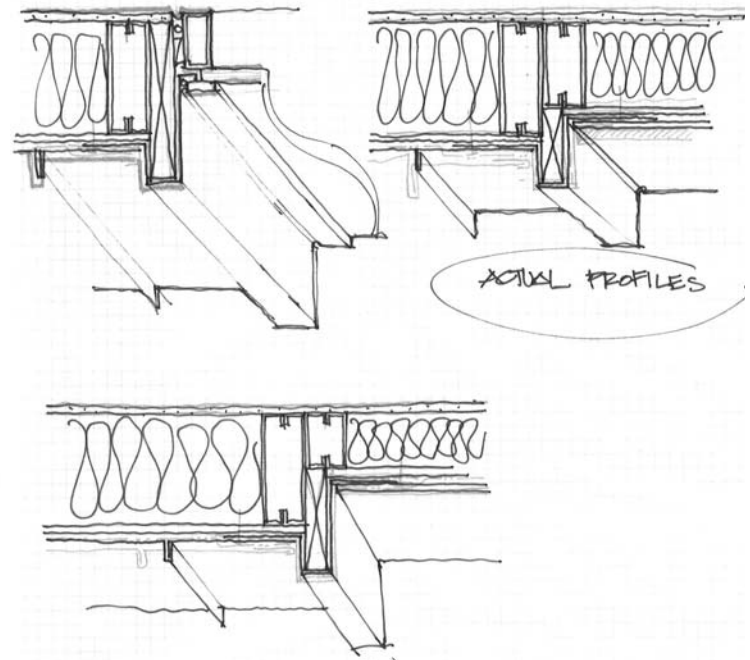


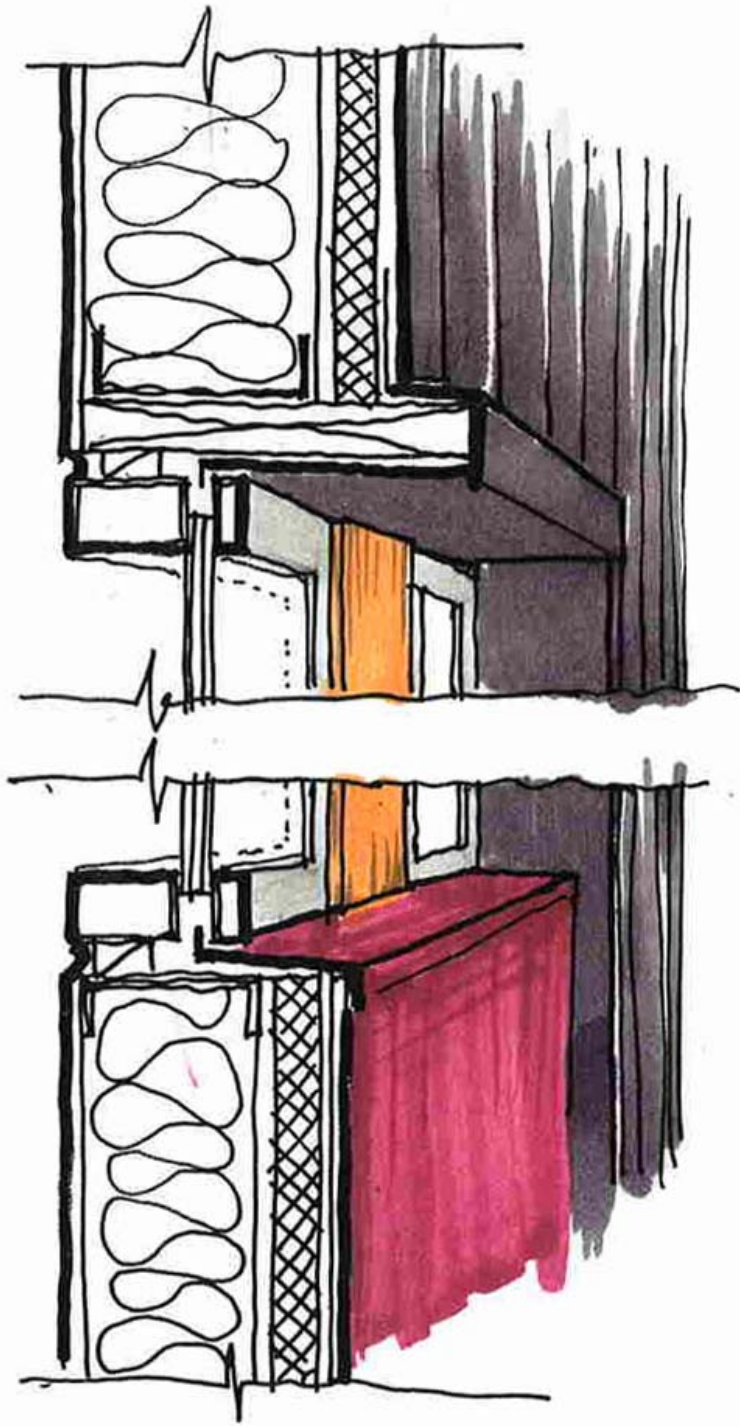
PS 39 - 3/1/08-



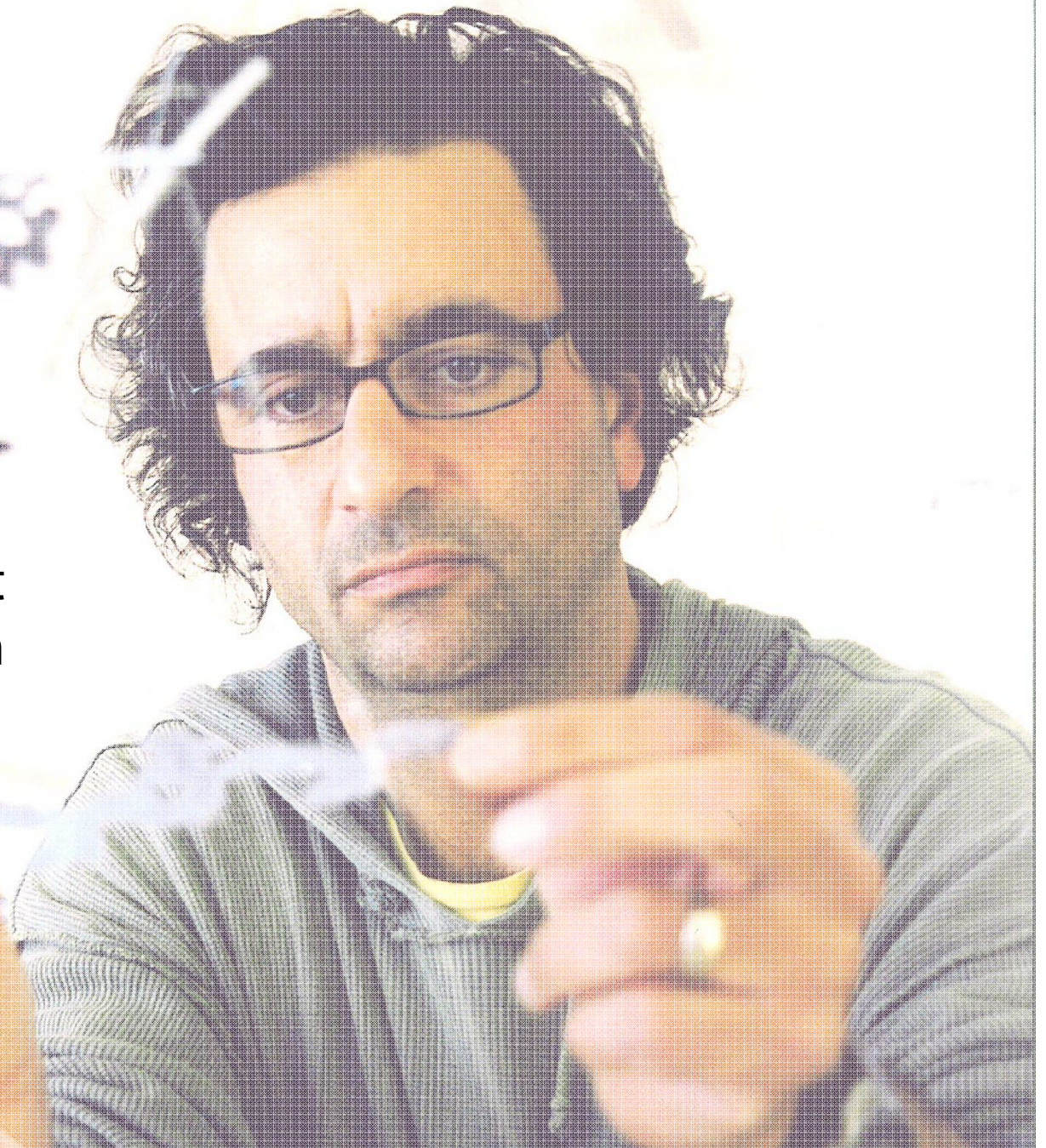
2x12 AT 8" TTL FEET GLAZING

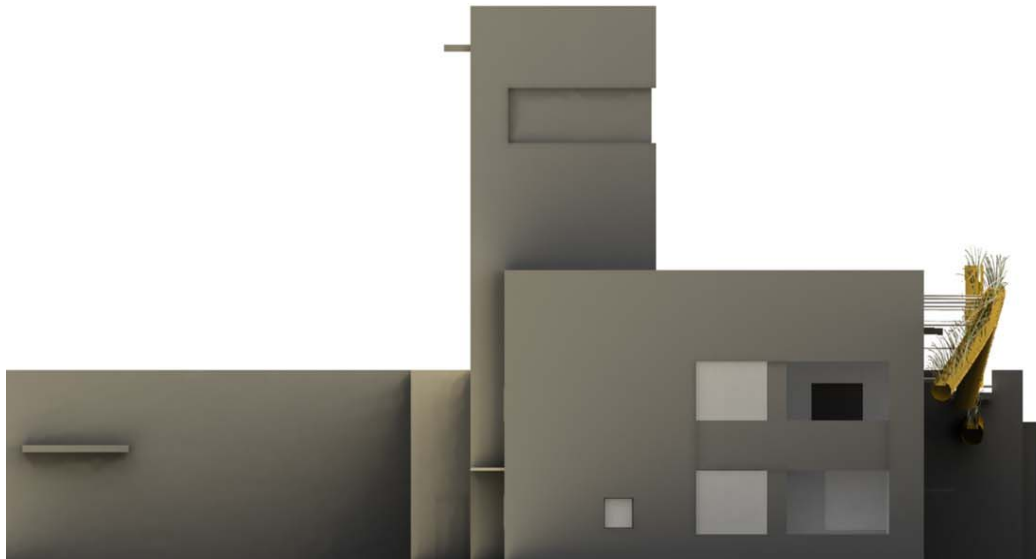
2x6 AT 6" TTL





artist
collaboration











LEED status



LEED-NC

LEED-NC Version 2.2 Registered Project Checklist

Fire Station 39
Seattle, WA

Yes ? No

Team	GBC	12	1	1	Sustainable Sites	14 Points
Arch			Y		Prereq 1 Construction Activity Pollution Prevention	Required
Arch		1			Credit 1 Site Selection	1
Arch		1			Credit 2 Development Density & Community Connectivity	1
				1	Credit 3 Brownfield Redevelopment	1
Arch		1			Credit 4.1 Alternative Transportation, Public Transportation Access	1
Arch		1			Credit 4.2 Alternative Transportation, Bicycle Storage & Changing Rooms	1
Arch		1			Credit 4.3 Alternative Transportation, Low-Emitting and Fuel-Efficient Vehicles	1
Arch		1			Credit 4.4 Alternative Transportation, Parking Capacity	1
Lndscap	x		1		Credit 5.1 Site Development, Protect or Restore Habitat	1
Arch		1			Credit 5.2 Site Development, Maximize Open Space	1
Civil	x	1			Credit 5.1 Stormwater Design, Quantity Control	1
Civil	x	1			Credit 5.2 Stormwater Design, Quality Control	1
Civil		1			Credit 7.1 Heat Island Effect, Non-Roof	1
Arch		1			Credit 7.2 Heat Island Effect, Roof	1
Elec		1			Credit 8 Light Pollution Reduction	1

Yes ? No

Team	GBC	2	2	1	Water Efficiency	5 Points
Lndscap		1			Credit 1.1 Water Efficient Landscaping, Reduce by 50%	1
Lndscap		1			Credit 1.2 Water Efficient Landscaping, No Potable Use or No Irrigation	1
				1	Credit 2 Innovative Wastewater Technologies	1
Mech		1			Credit 3.1 Water Use Reduction, 20% Reduction	1
Mech		1			Credit 3.2 Water Use Reduction, 30% Reduction	1

Yes ? No

Team	GBC	5	2	10	Energy & Atmosphere	17 Points
FFD			Y		Prereq 1 Fundamental Commissioning of the Building Energy Systems	Required
Mech			Y		Prereq 2 Minimum Energy Performance	Required
Mech			Y		Prereq 3 Fundamental Refrigerant Management	Required
Mech		4		6	Credit 1 Optimize Energy Performance	1 to 10
				3	Credit 2 On-Site Renewable Energy	1 to 3
FFD		1			Credit 3 Enhanced Commissioning	1
				1	Credit 4 Enhanced Refrigerant Management	1
Mech		1			Credit 5 Measurement & Verification	1
FFD		1			Credit 6 Green Power	1

Yes ? No

Team	GBC	6	3	4	Materials & Resources	13 Points
Arch			Y		Prereq 1 Storage & Collection of Recyclables	Required
				1	Credit 1.1 Building Reuse, Maintain 75% of Existing Walls, Floors & Roof	1
				1	Credit 1.2 Building Reuse, Maintain 95% of Existing Walls, Floors & Roof	1
				1	Credit 1.3 Building Reuse, Maintain 50% of Interior Non-Structural Elements	1
Arch		1			Credit 2.1 Construction Waste Management, Divert 50% from Disposal	1
Arch		1			Credit 2.2 Construction Waste Management, Divert 75% from Disposal	1
Arch			1		Credit 3.1 Materials Reuse, 5%	1
				1	Credit 3.2 Materials Reuse, 10%	1
Arch/Struct		1			Credit 4.1 Recycled Content, 10% (post-consumer + ½ pre-consumer)	1
Arch/Struct		1			Credit 4.2 Recycled Content, 20% (post-consumer + ½ pre-consumer)	1
Arch/Lndscap		1			Credit 5.1 Regional Materials, 10% Extracted, Processed & Manufactured Region	1

Arch/Lndscap		1			Credit 5.2 Regional Materials, 20% Extracted, Processed & Manufactured Region	1
Arch		1			Credit 6 Rapidly Renewable Materials	1
Arch		1			Credit 7 Certified Wood	1

Yes ? No

Team	GBC	11	2	2	Indoor Environmental Quality	15 Points
Mech			Y		Prereq 1 Minimum IAQ Performance	Required
FFD			Y		Prereq 2 Environmental Tobacco Smoke (ETS) Control	Required
				1	Credit 1 Outdoor Air Delivery Monitoring	1
Arch/Mech			1		Credit 2 Increased Ventilation	1
Arch/FFD		1			Credit 3.1 Construction IAQ Management Plan, During Construction	1
Arch/FFD		1			Credit 3.2 Construction IAQ Management Plan, Before Occupancy	1
Arch		1			Credit 4.1 Low-Emitting Materials, Adhesives & Sealants	1
Arch		1			Credit 4.2 Low-Emitting Materials, Paints & Coatings	1
Arch		1			Credit 4.3 Low-Emitting Materials, Carpet Systems	1
Arch/Struct		1			Credit 4.4 Low-Emitting Materials, Composite Wood & Agrifiber Products	1
				1	Credit 5 Indoor Chemical & Pollutant Source Control	1
Elec		1			Credit 6.1 Controllability of Systems, Lighting	1
Mech		1			Credit 6.2 Controllability of Systems, Thermal Comfort	1
Mech		1			Credit 7.1 Thermal Comfort, Design	1
Mech/Arch/FFD		1			Credit 7.2 Thermal Comfort, Verification	1
Arch		1			Credit 8.1 Daylight & Views, Daylight 75% of Spaces	1
Arch		1			Credit 8.2 Daylight & Views, Views for 90% of Spaces	1

Yes ? No

Team	GBC	2	2	1	Innovation & Design Process	5 Points
Mech	x		1		Credit 1.1 Innovation in Design: VRV First Use Seattle	1
Civil	x		1		Credit 1.2 Innovation in Design: Rainwater Harvesting	1
Lndscap	x		1		Credit 1.3 Innovation in Design: Rain garden	1
				1	Credit 1.4 Innovation in Design: Provide Specific Title	1
ALL		1			Credit 2 LEED® Accredited Professional	1

Yes ? No

Project Totals (pre-certification estimates)					69 Points
38	12	19			

Certified 26-32 points Silver 33-38 points Gold 39-51 points Platinum 52-69 points

Certified: 26-32 credits
 Silver 33-38 credits
 Gold: 39-51 credits
 Platinum: 52-69 credits

Fire Station 39

38 Credits

per update
at Mid-DD Phase

40-41 Credits

with rainwater harvesting
for toilet flushing



ost estimate & schedule update

discussion



