



SEATTLE DESIGN COMMISSION

FIRE STATION 35 - CROWN HILL

Design Development

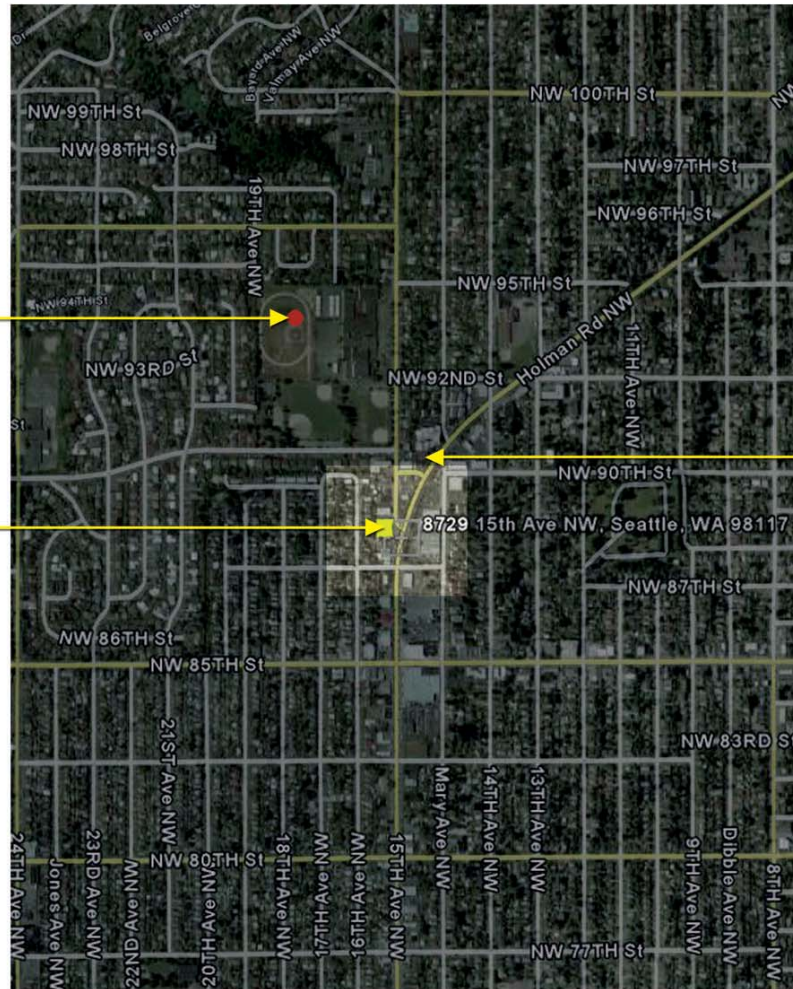
MARCH 20, 2008

RICEfergusMILLER
ARCHITECTURE & PLANNING

MARCUS WHITMAN
JUNIOR HIGH

SITE

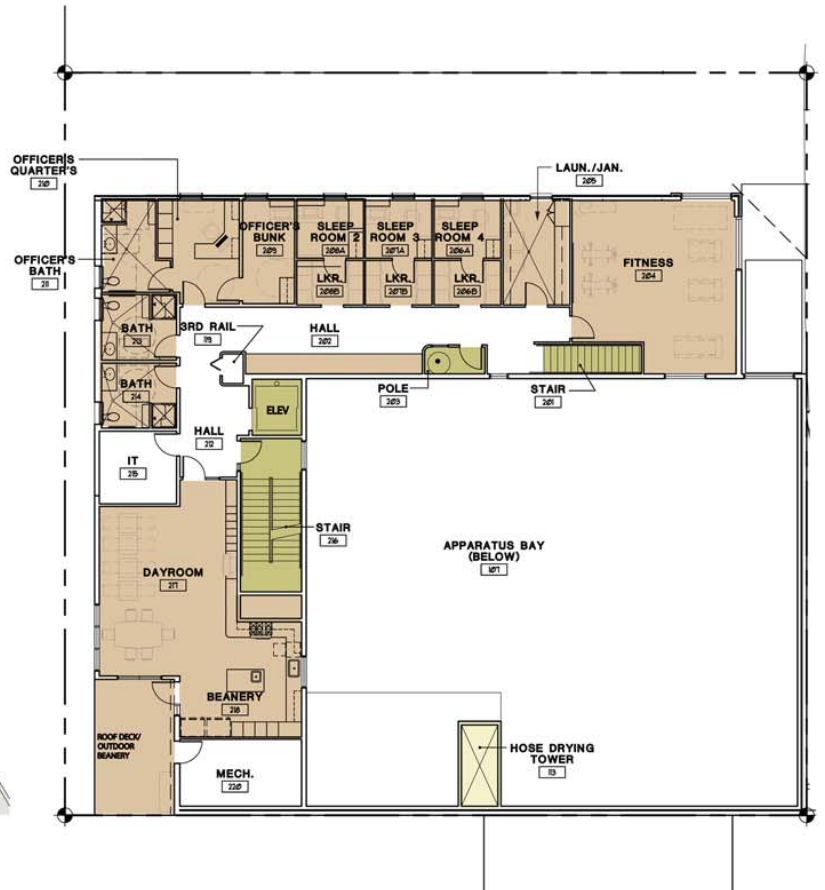
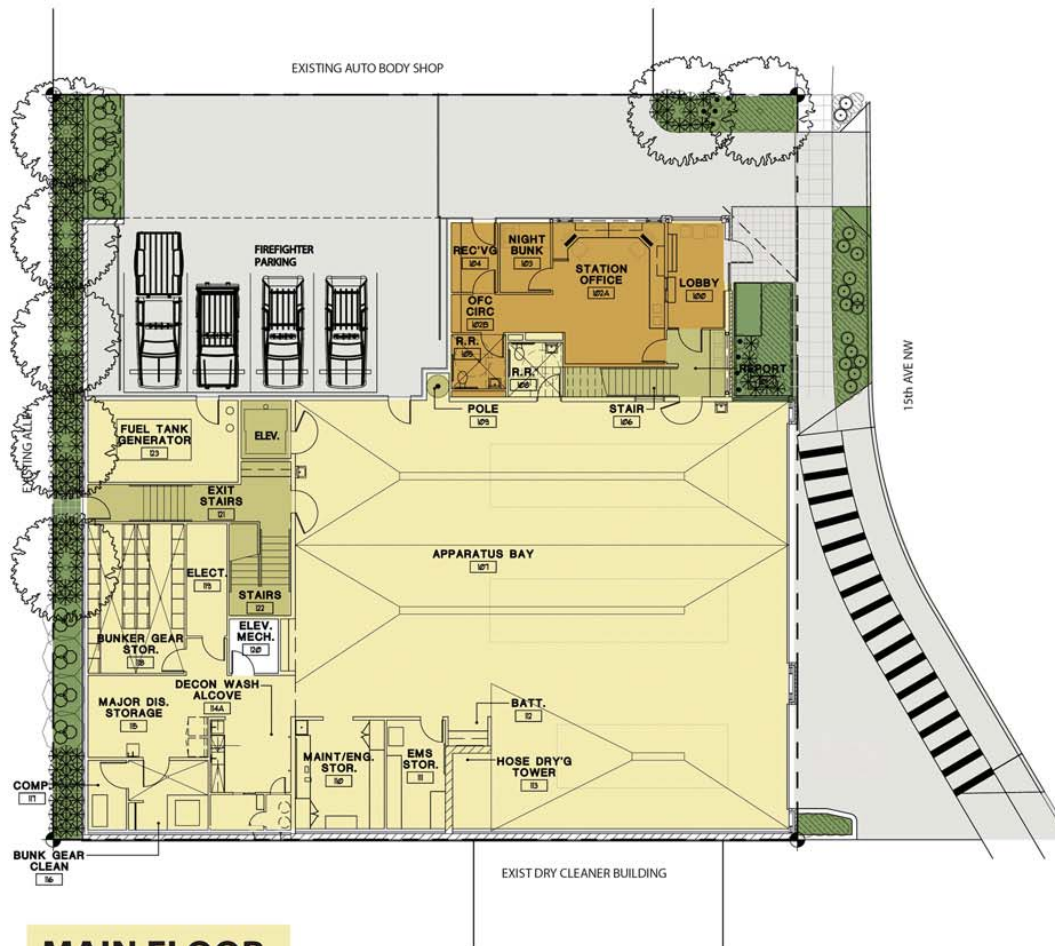
CROWN LUTHERAN
CHURCH





Site Analysis
Fire Station 35 - Design Development Presentation





MAIN FLOOR

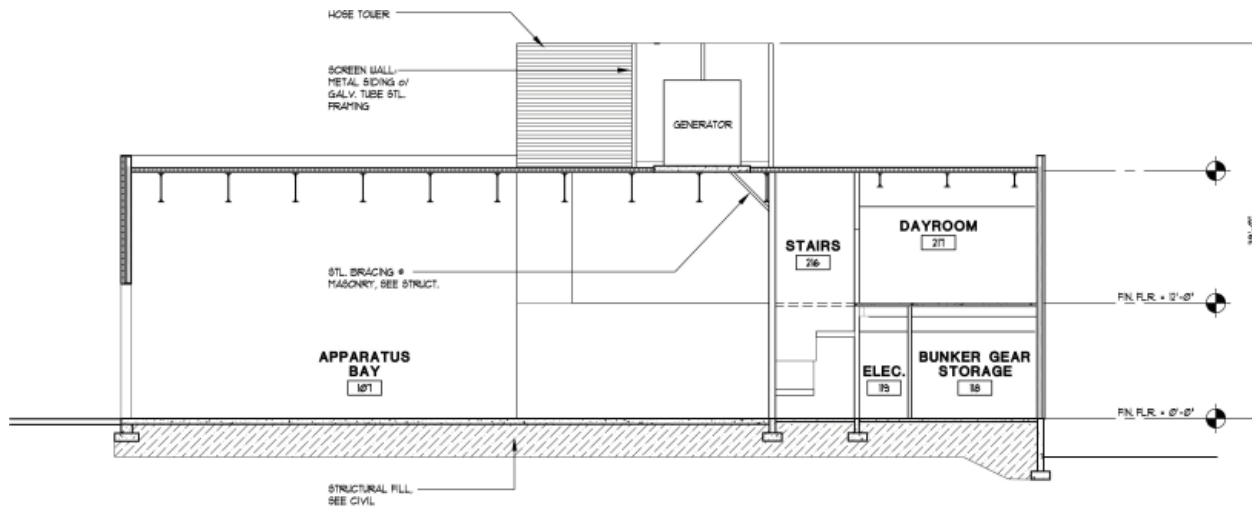
SECOND FLOOR

FIRE STATION 35

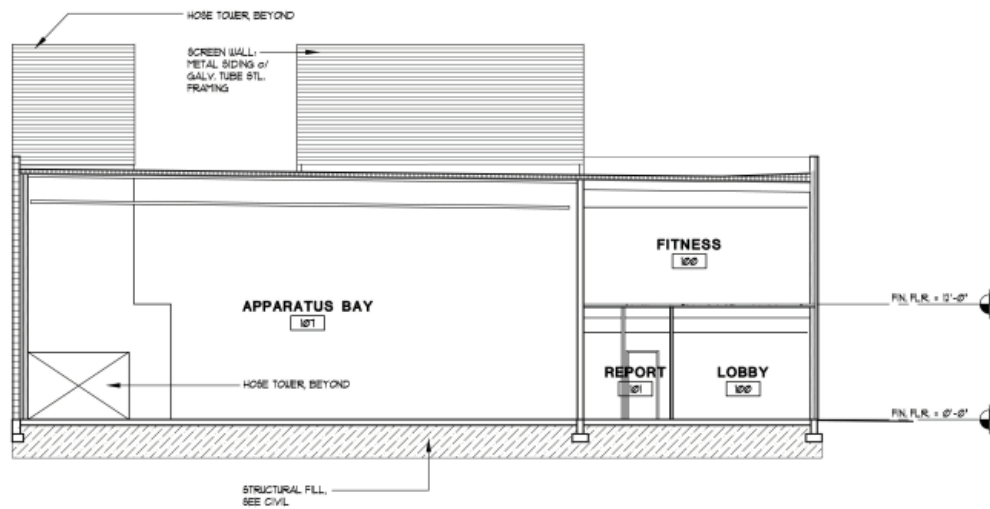
- Replacement of existing station at current site.
- Approx. 10, 000 SF.
- Single engine crew, with reserve Engine and Medic.
- Parking for 4 on-duty fire fighters.

- VERTICAL CIRCULATION
- ADMINISTRATION AREA
- CORE AND OPERATIONS SUPPORT AREAS
- CREW AREAS
- EQUIPMENT AND CIRCULATION





1 Building Section



2 Building Section

“Rescue” Concept by Kay Kirkpatrick, Artist

The piece is conceived as a freestanding “Ladder” or “Stretcher” type structure on the northeast corner of the station lot, replacing a typical rain awning structure located there by the architects.

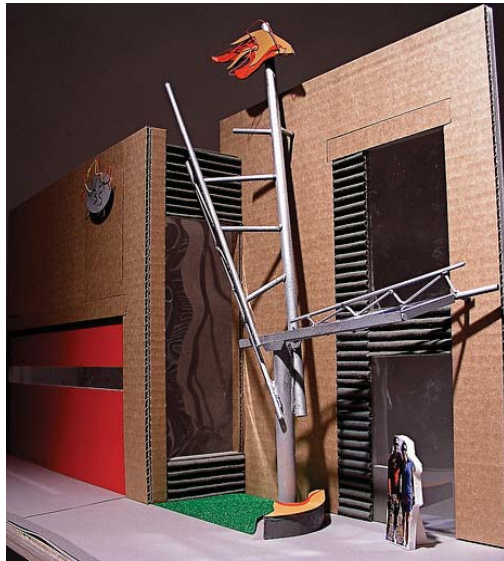
The ladder symbolizes the rescue function of the fire fighters, whether from fire or from medical or other emergency. The piece rises at an angle, activating the front of the building and referencing the strong diagonals of the “Boomerang” period of architecture during the 1940-50’s, which was the formative period for the Crown Hill neighborhood seen today. A mile south the Ballard neighborhood has been fighting to retain a Denny’s Restaurant of the same era as a “historic landmark.”

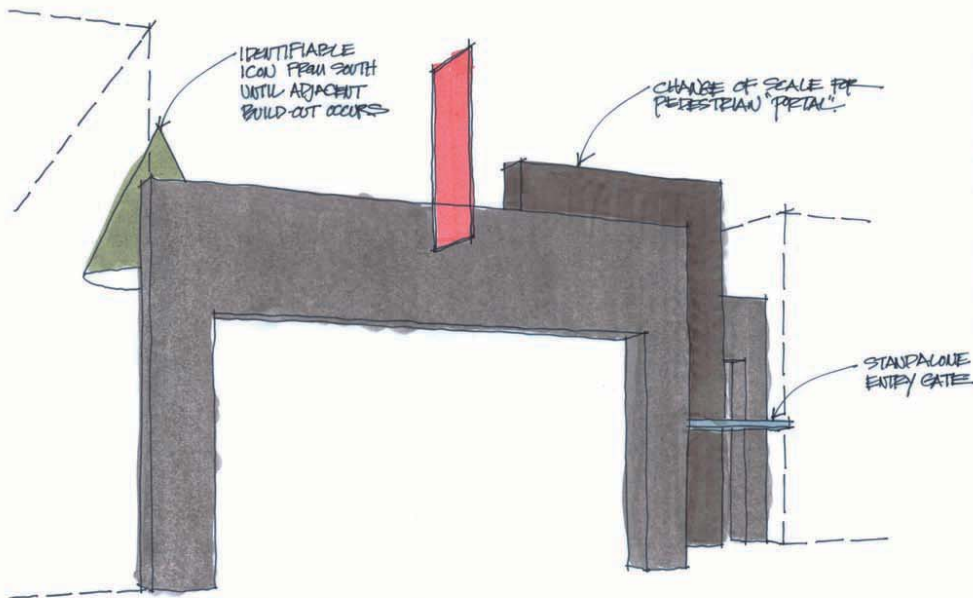
While structural, the work retains its function as a rain shelter, capturing rainwater via a glass awning component and channeling it off into the adjacent green landscaping. The glass will be a tinted blue color, possibly etched to reference water.

The ladder shape rises up from a flame shape concrete bench surfaced with glass mosaic tiles, also reminiscent of the 1950’s architectural style and referencing the many mosaic projects the community has done in the neighborhood over the years.

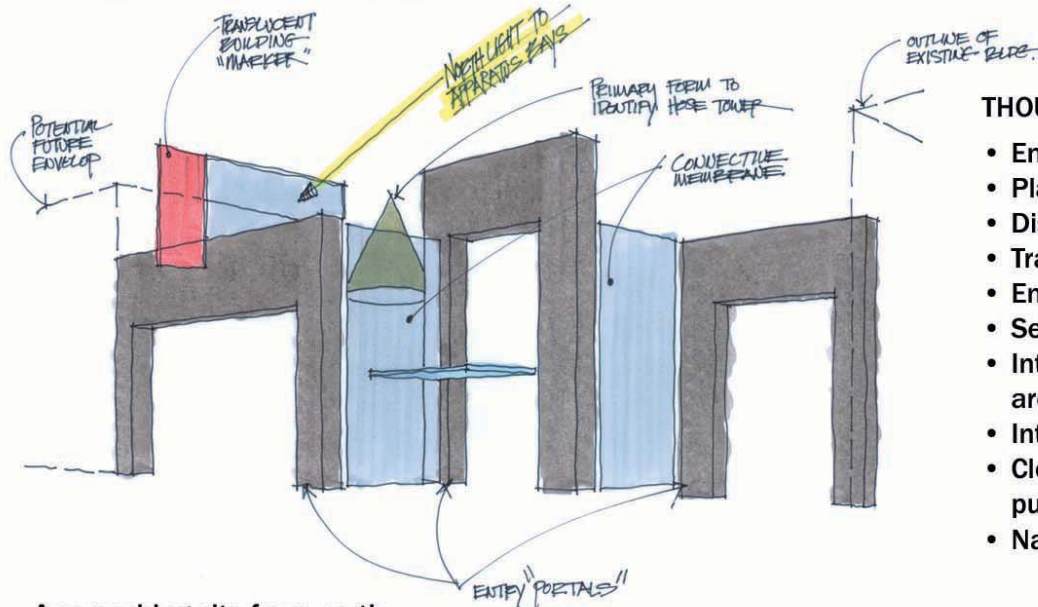
Floating over the station at the top of the ladder is the adversary of the firefighter, the flame. The ladder pierces the flame, controlling it. The flame will be constructed of sheet aluminum, brightly painted, with a neon tube element that will light up at night, mimicking the commercial signage on 15th Avenue, the adjacent truck route.

The piece strives to echo the multiple levels of experiencing the site and neighborhood, from the sign-like nature of the drive by, to the intimate detail of sitting on the bench on a sunny morning, or the glimpse of the structure offered from the sidewalk or various points inside the station office, workout area and equipment bay.





Approaching site from the south



Approaching site from north

DESIGN PARTI:

Make a distinctive statement that finds a place for itself within the constraints of the site, while considering design principals from an earlier period - without reliance on nostalgia.

GOALS:

Establish a lasting municipal image of openness, service and connectivity to the community.

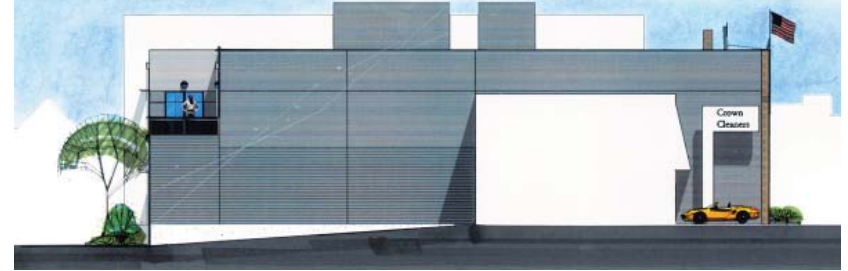
- Acknowledge the urban transition between a commercial and residential land use.
- Celebrate the use of simple materials.
- Design for hard use and low maintenance.
- Maximize day lighting opportunities.
- Emphasize the flow/connection of exterior and interior form by use of transparency and articulation of intersections.
- Establish a new direction for urban development in the neighborhood.

THOUGHTS ON CONCEPT AS ILLUSTRATED:

- Emphasize thickness, mass and permanence of portals.
- Play of primary form.
- Dissolve the box - articulate planar junctions.
- Transparency within mass as opposed to connecting them.
- Envelope is bi-directional visually.
- Separate fire vehicle/pedestrian/staff entry portals.
- Integration of art and architecture. Provide canvases within the architecture for this to occur.
- Integration of landscape design and architecture.
- Clerestory as a "marker" in daytime/"lantern" at night. Serves dual purpose as building identifier as well as interior illumination.
- Natural ventilation source.



North Elevation



South Elevation



East Elevation



West Elevation





Southwest View

Northwest View

