



Fort Lawton - Seattle Wash -

B268








UTAH AVENUE  
250

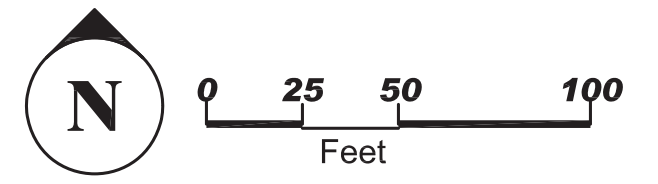
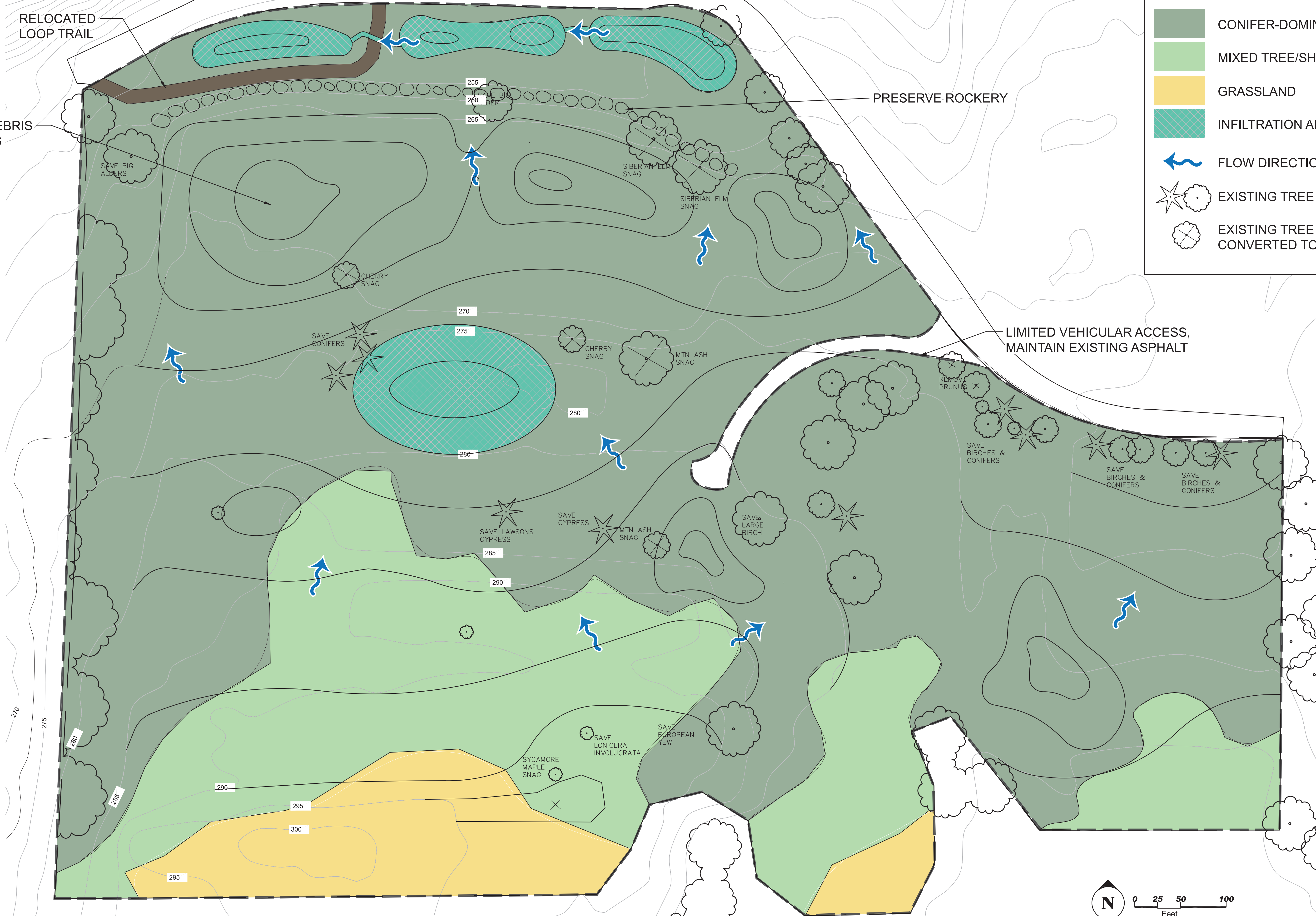
RELOCATED  
LOOP TRAIL

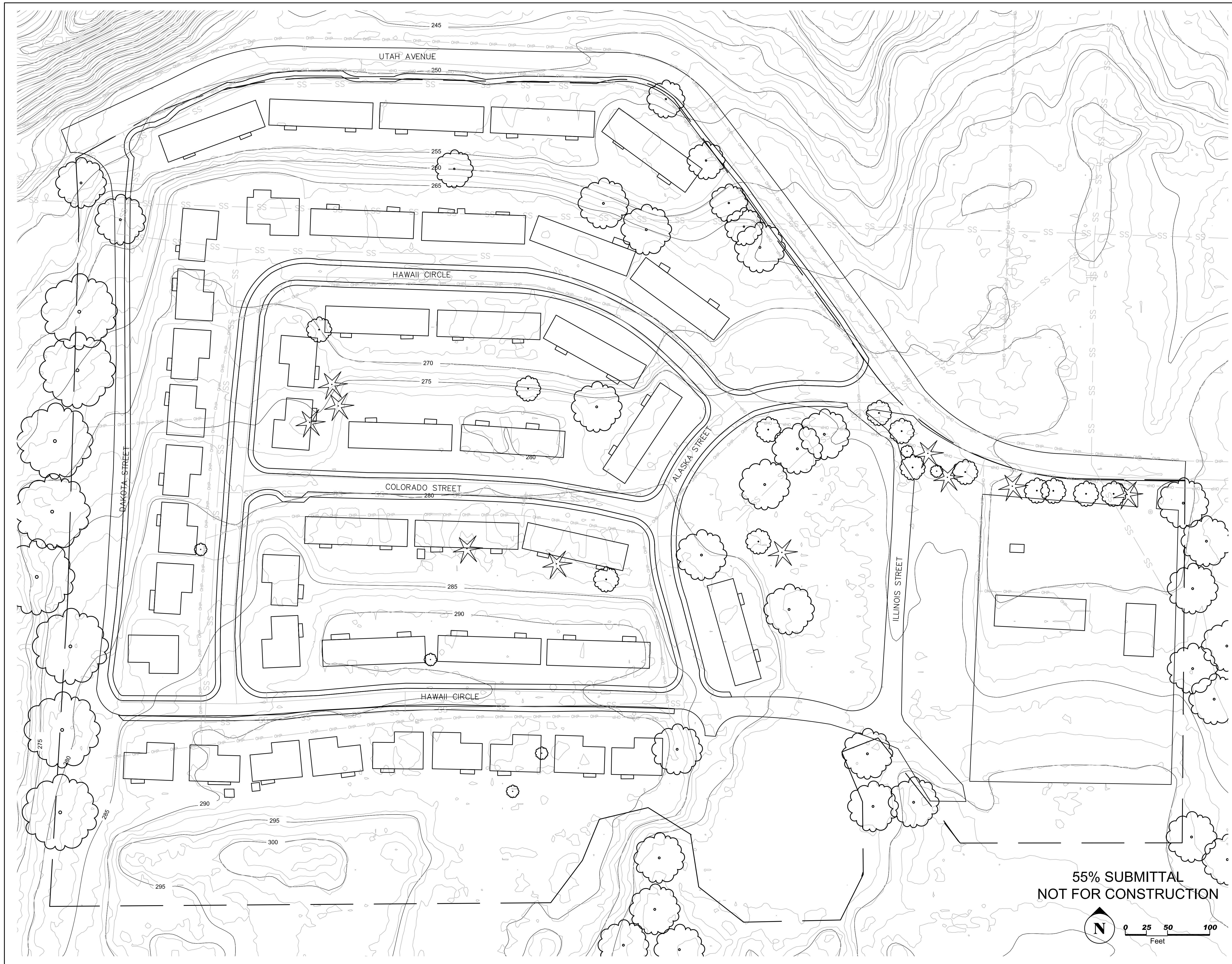
CONCRETE DEBRIS  
BURIAL AREAS

PRESERVE ROCKERY

LEGEND

-  CONIFER-DOMINANT FOREST
-  MIXED TREE/SHRUBS
-  GRASSLAND
-  INFILTRATION AREAS
-  FLOW DIRECTION
-  EXISTING TREE TO REMAIN
-  EXISTING TREE TO BE CONVERTED TO SNAG





**>>>>CAUTION<<<<**  
**CALL BEFORE YOU DIG!**  
 NOT LESS THAN TWO OR MORE THAN TEN BUSINESS DAYS  
 PRIOR TO COMMENCING EXCAVATION OR DEMOLITION,  
 SECURE THE SERVICES OF A COMMERCIAL UNDERGROUND  
 UTILITIES LOCATOR SERVICE TO IDENTIFY BELOW-GROUND  
 IMPROVEMENTS THAT MAY NOT BE INDICATED ON THE  
 DRAWINGS. FOR IRRIGATION SYSTEMS, CALL SEATTLE  
 PARKS PLUMBING SHOP (206 684 7070)  
**>>800 424 5555<<**

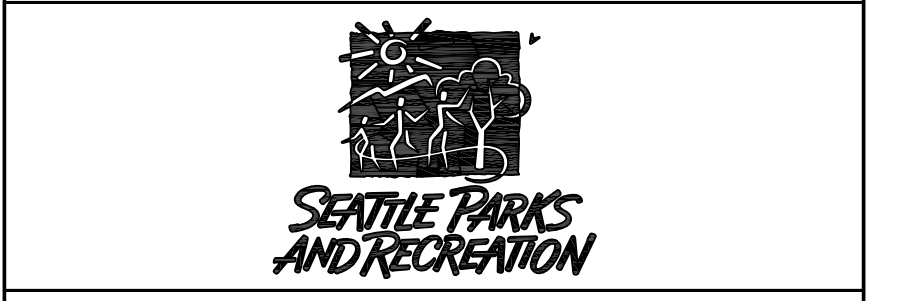
- LEGEND**
- PROJECT BOUNDARY
  - 295 — EXISTING MAJOR CONTOURS
  - — EXISTING MINOR CONTOURS
  - EXISTING ASPHALT
  - EXISTING CONCRETE
  - SS — EXISTING SEWER — MAIN
  - OHP — EXISTING ELECTRICAL — OVERHEAD
  - W — EXISTING WATER MAIN
  - ⊙ EXISTING CATCH BASIN
  - ☁ EXISTING DECIDUOUS TREES (LOCATION APPROX.)
  - ★ EXISTING CONIFEROUS TREES (LOCATION APPROX.)

3		
2		
1		
NO.	REVISION — AS BUILT	DATE

REVIEWED: \_\_\_\_\_ DATE \_\_\_\_\_  
 PARK ENGINEER

All work done in accordance with the City of Seattle Standard  
 Plans and Specifications in effect on the date shown above, and  
 supplemented by Special Provisions.

**ESA Adolfson**  
 5309 Shilshole Ave. NW  
 Seattle, WA 98107  
 P: (206) 789-9658  
 F: (206) 789-9684



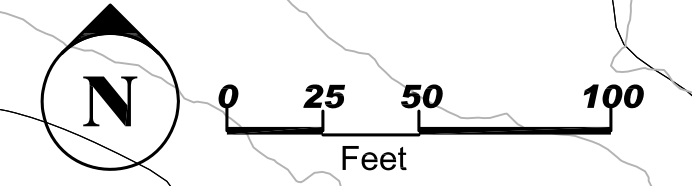
**DISCOVERY PARK**

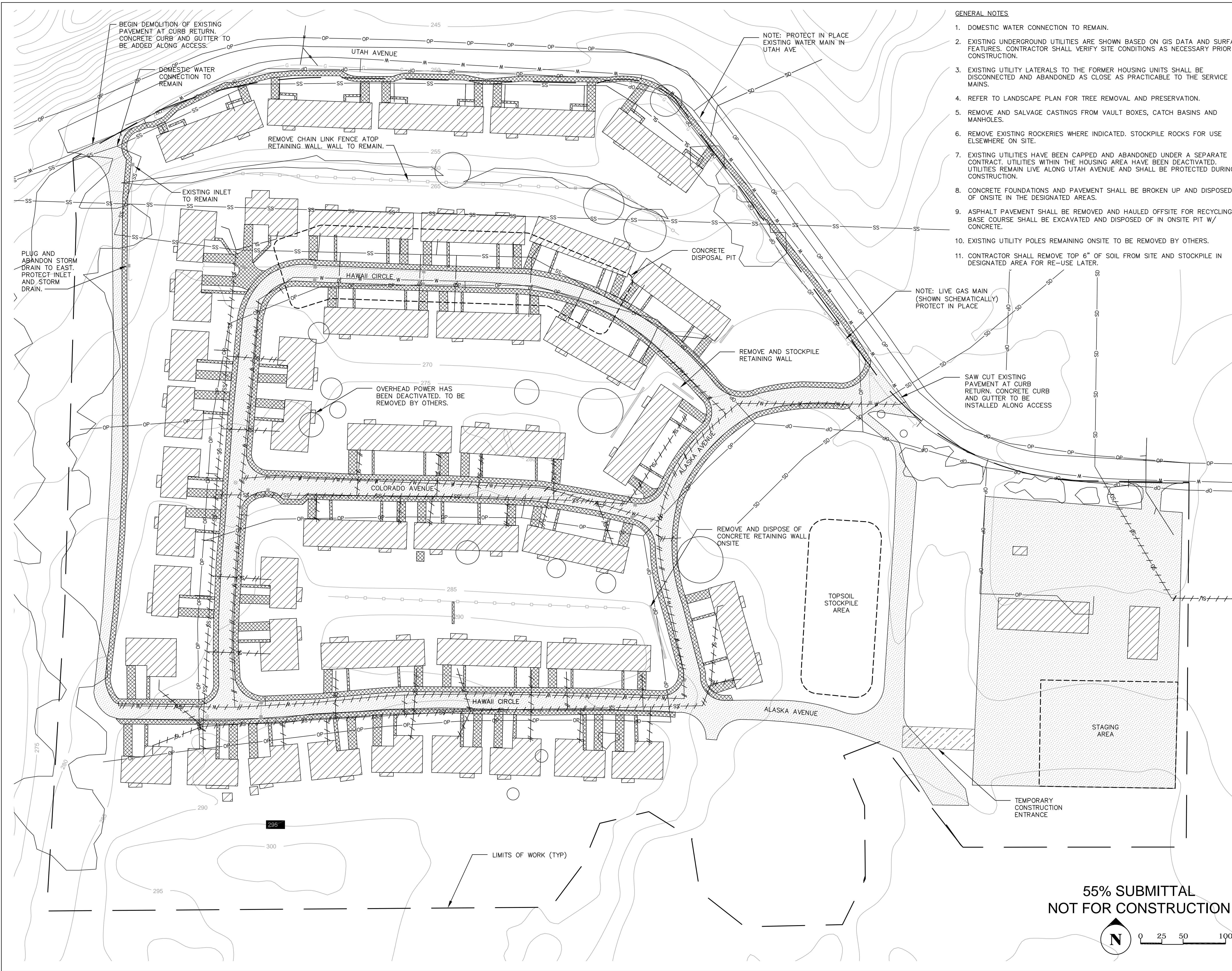
**CAPEHART RESTORATION**

**EXISTING CONDITIONS**

DESIGNED ME	DATE 10-13-10
DRAWN DP	
CHECKED MW	SHEET 1 OF 5
ORDINANCE NO. X	<b>L1.1</b>
CONTRACT NO. PDA2010-007	
SCALE 1"=50'	

**55% SUBMITTAL  
 NOT FOR CONSTRUCTION**





**GENERAL NOTES**

1. DOMESTIC WATER CONNECTION TO REMAIN.
2. EXISTING UNDERGROUND UTILITIES ARE SHOWN BASED ON GIS DATA AND SURFACE FEATURES. CONTRACTOR SHALL VERIFY SITE CONDITIONS AS NECESSARY PRIOR TO CONSTRUCTION.
3. EXISTING UTILITY LATERALS TO THE FORMER HOUSING UNITS SHALL BE DISCONNECTED AND ABANDONED AS CLOSE AS PRACTICABLE TO THE SERVICE MAINS.
4. REFER TO LANDSCAPE PLAN FOR TREE REMOVAL AND PRESERVATION.
5. REMOVE AND SALVAGE CASTINGS FROM VAULT BOXES, CATCH BASINS AND MANHOLES.
6. REMOVE EXISTING ROCKERIES WHERE INDICATED. STOCKPILE ROCKS FOR USE ELSEWHERE ON SITE.
7. EXISTING UTILITIES HAVE BEEN CAPPED AND ABANDONED UNDER A SEPARATE CONTRACT. UTILITIES WITHIN THE HOUSING AREA HAVE BEEN DEACTIVATED. UTILITIES REMAIN LIVE ALONG UTAH AVENUE AND SHALL BE PROTECTED DURING CONSTRUCTION.
8. CONCRETE FOUNDATIONS AND PAVEMENT SHALL BE BROKEN UP AND DISPOSED OF ONSITE IN THE DESIGNATED AREAS.
9. ASPHALT PAVEMENT SHALL BE REMOVED AND HAULED OFFSITE FOR RECYCLING. BASE COURSE SHALL BE EXCAVATED AND DISPOSED OF IN ONSITE PIT W/ CONCRETE.
10. EXISTING UTILITY POLES REMAINING ONSITE TO BE REMOVED BY OTHERS.
11. CONTRACTOR SHALL REMOVE TOP 6" OF SOIL FROM SITE AND STOCKPILE IN DESIGNATED AREA FOR RE-USE LATER.

**>>>>CAUTION<<<<  
CALL BEFORE YOU DIG!**  
NOT LESS THAN TWO OR MORE THAN TEN BUSINESS DAYS PRIOR TO COMMENCING EXCAVATION OR DEMOLITION, SECURE THE SERVICES OF A COMMERCIAL UNDERGROUND UTILITIES LOCATOR SERVICE TO IDENTIFY BELOW-GROUND IMPROVEMENTS THAT MAY NOT BE INDICATED ON THE DRAWINGS. FOR IRRIGATION SYSTEMS, CALL SEATTLE PARKS PLUMBING SHOP (206 684 7070)  
**>>800 424 5555<<**

**LEGEND**

	REMOVE CONC FOUNDATION
	REMOVE CONC DRIVEWAYS AND SIDEWALKS
	REMOVE ASPHALT PAVEMENT
	REMOVE EXISTING UTILITY LINE
	PROPOSED PROJECT BOUNDARY
	EXISTING 5' CONTOURS
	SEWER MAIN
	SEWER LATERAL
	OVERHEAD POWER LINE
	STORM DRAIN LINE
	GAS LINE
	STORM MAIN CATCH BASIN OR MANHOLE
	EXISTING CHAIN LINK FENCE
	WATER VALVE CASTING

3		
2		
1		
NO.	REVISION	DATE
	AS BUILT	

REVIEWED:                      PARK ENGINEER                      DATE                       
All work done in accordance with the City of Seattle Standard Plans and Specifications in effect on the date shown above, and supplemented by Special Provisions.

**ESA Adolfson**  
5309 Shilshole Ave. NW  
Seattle, WA 98107  
P: (206) 789-9658  
F: (206) 789-9684

**kpff** Consulting Engineers  
1601 Fifth Avenue, Suite 1600  
Seattle, Washington 98101-3665  
(206) 622-5822 Fax (206) 622-8130



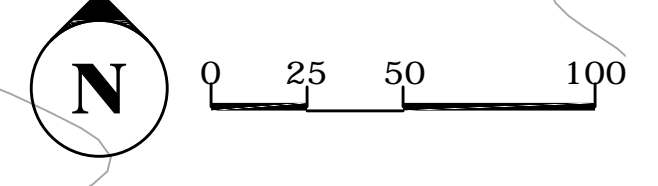
**DISCOVERY PARK**

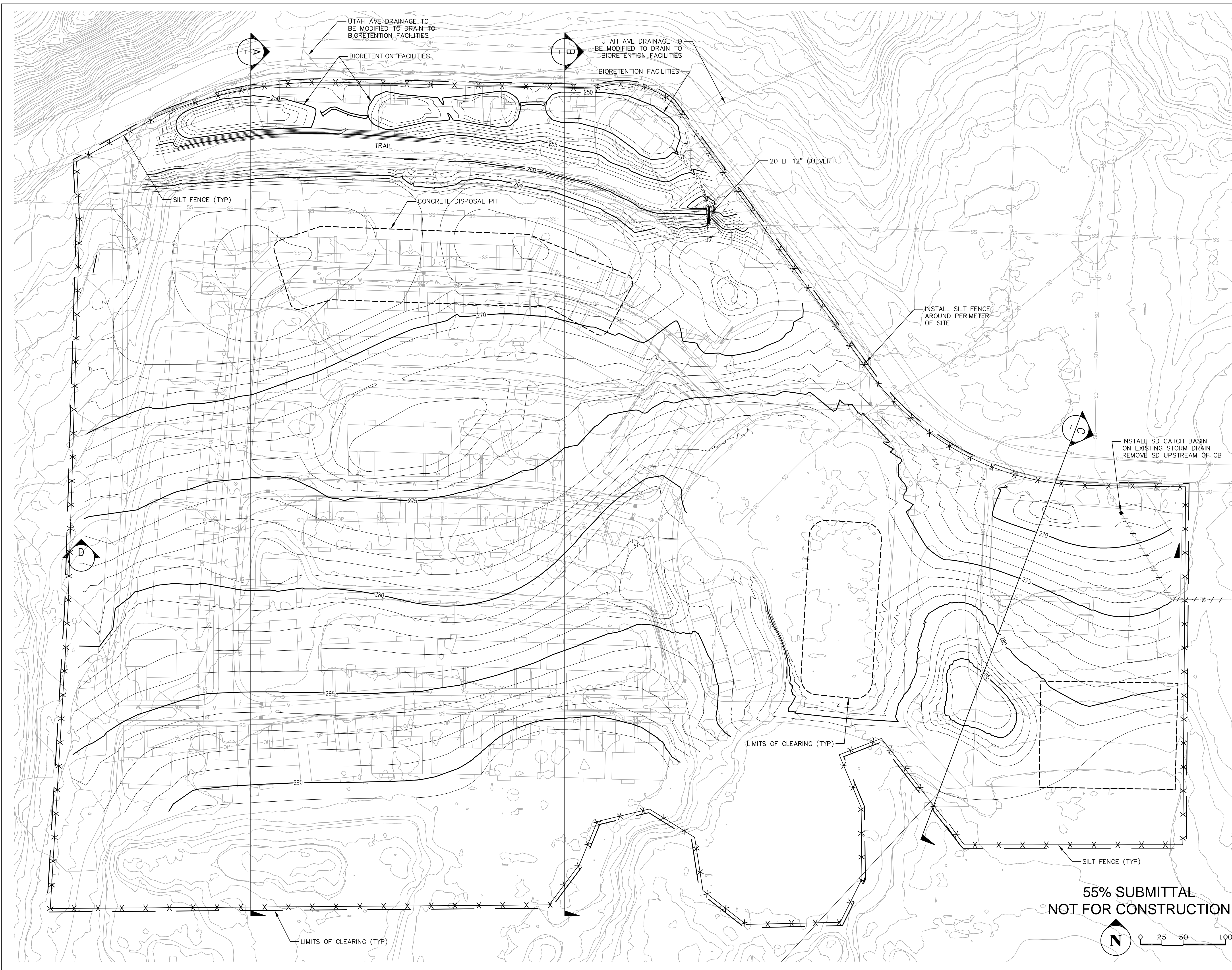
**CAPEHART RESTORATION**

**DEMOLITION PLAN**

DESIGNED CMM	DATE 10-13-10
DRAWN TLW	SHEET 2 OF 6
CHECKED PDS	
ORDINANCE NO. X	<b>L1.2</b>
CONTRACT NO. PDA2010-007	
SCALE 1"=50'	

**55% SUBMITTAL  
NOT FOR CONSTRUCTION**





**>>>>CAUTION<<<<**  
**CALL BEFORE YOU DIG!**  
 NOT LESS THAN TWO OR MORE THAN TEN BUSINESS DAYS PRIOR TO COMMENCING EXCAVATION OR DEMOLITION, SECURE THE SERVICES OF A COMMERCIAL UNDERGROUND UTILITIES LOCATOR SERVICE TO IDENTIFY BELOW-GROUND IMPROVEMENTS THAT MAY NOT BE INDICATED ON THE DRAWINGS. FOR IRRIGATION SYSTEMS, CALL SEATTLE PARKS PLUMBING SHOP (206 684 7070)  
**>>800 424 5555<<**

**LEGEND**

—	PROPOSED PROJECT BOUNDARY
— X — X —	SILT FENCE
— XXX —	EXISTING 5' CONTOURS
— SS —	SEWER MAIN
— SL —	SEWER LATERAL
— OP —	OVERHEAD POWER LINE
— SD —	STORM DRAIN LINE
— G —	GAS LINE
■	STORM MAIN CATCH BASIN OR MANHOLE
— ○ —	EXISTING CHAIN LINK FENCE
⊙	WATER VALVE CASTING

3		
2		
1		
NO.	REVISION — AS BUILT	DATE

REVIEWED: PARK ENGINEER \_\_\_\_\_ DATE \_\_\_\_\_  
 All work done in accordance with the City of Seattle Standard Plans and Specifications in effect on the date shown above, and supplemented by Special Provisions.

**ESA Adolfson**  
 5309 Shilshole Ave. NW  
 Seattle, WA 98107  
 P: (206) 789-9658  
 F: (206) 789-9684

**kpff** Consulting Engineers  
 1601 Fifth Avenue, Suite 1600  
 Seattle, Washington 98101-3665  
 (206) 622-5822 Fax (206) 622-8130



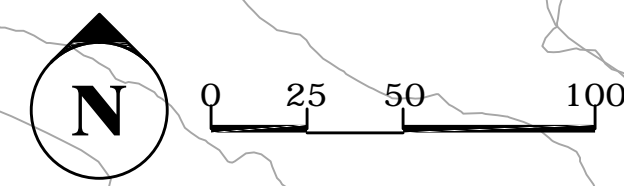
**DISCOVERY PARK**

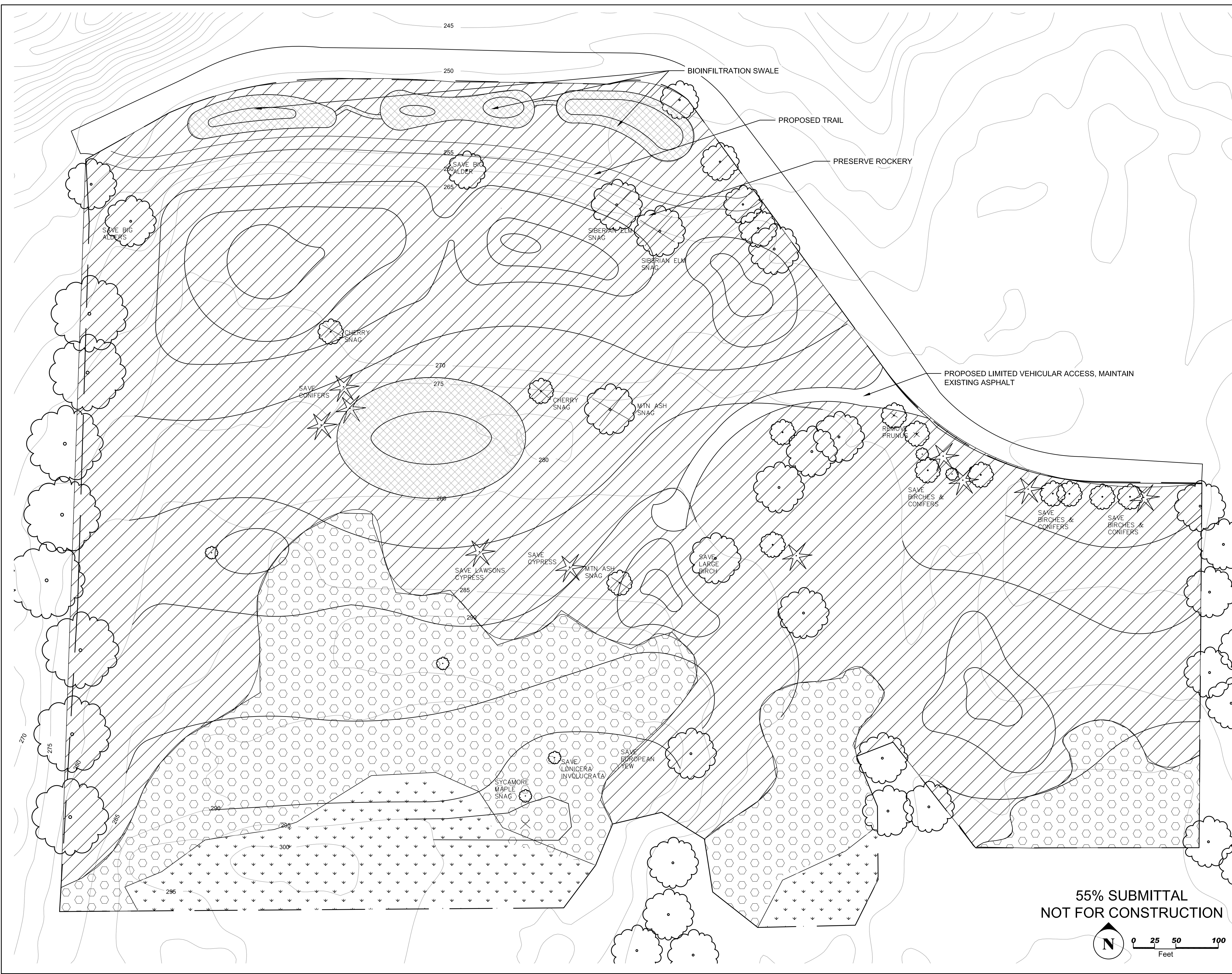
**CAPEHART RESTORATION**

**GRADING PLAN**

DESIGNED CMM	DATE 10-13-10
DRAWN TLW	SHEET 3 OF 6
CHECKED PDS	
ORDINANCE NO. X	<b>L1.3</b>
CONTRACT NO. PDA2010-007	
SCALE 1"=50'	

**55% SUBMITTAL  
 NOT FOR CONSTRUCTION**





**>>>>CAUTION<<<<**  
**CALL BEFORE YOU DIG!**  
 NOT LESS THAN TWO OR MORE THAN TEN BUSINESS DAYS PRIOR TO COMMENCING EXCAVATION OR DEMOLITION, SECURE THE SERVICES OF A COMMERCIAL UNDERGROUND UTILITIES LOCATOR SERVICE TO IDENTIFY BELOW-GROUND IMPROVEMENTS THAT MAY NOT BE INDICATED ON THE DRAWINGS. FOR IRRIGATION SYSTEMS, CALL SEATTLE PARKS PLUMBING SHOP (206 684 7070)  
**>>800 424 5555<<**

**LEGEND**

- PROJECT BOUNDARY
- 295 EXISTING MAJOR CONTOURS
- PROPOSED MAJOR CONTOURS
- PROPOSED CONIFEROUS DOMINATED TREES
- PROPOSED TREE/SHRUB MIX
- PROPOSED GRASS
- PROPOSED INFILTRATION AREA PLANTS
- EXISTING DECID. TREE TO REMAIN
- EXISTING CONIF. TREE TO REMAIN
- EXISTING TREE TO BE CONVERTED TO A SNAG

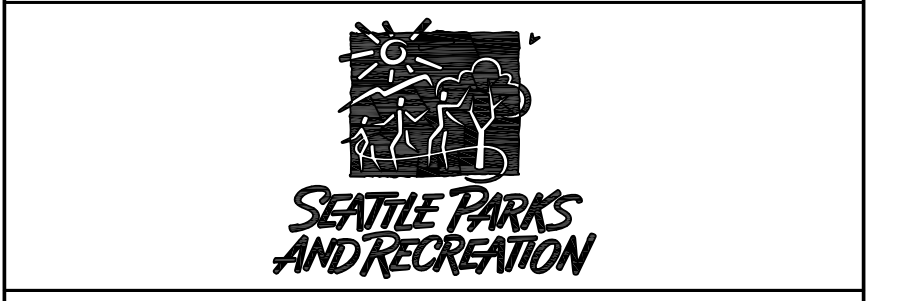
SEE SHEET L 1.5 FOR PLANT SCHEDULE

3		
2		
1		
NO.	REVISION - AS BUILT	DATE

REVIEWED: \_\_\_\_\_ DATE \_\_\_\_\_  
 PARK ENGINEER \_\_\_\_\_

All work done in accordance with the City of Seattle Standard Plans and Specifications in effect on the date shown above, and supplemented by Special Provisions.

**ESA Adolfson**  
 5309 Shilshole Ave. NW  
 Seattle, WA 98107  
 P: (206) 789-9658  
 F: (206) 789-9684



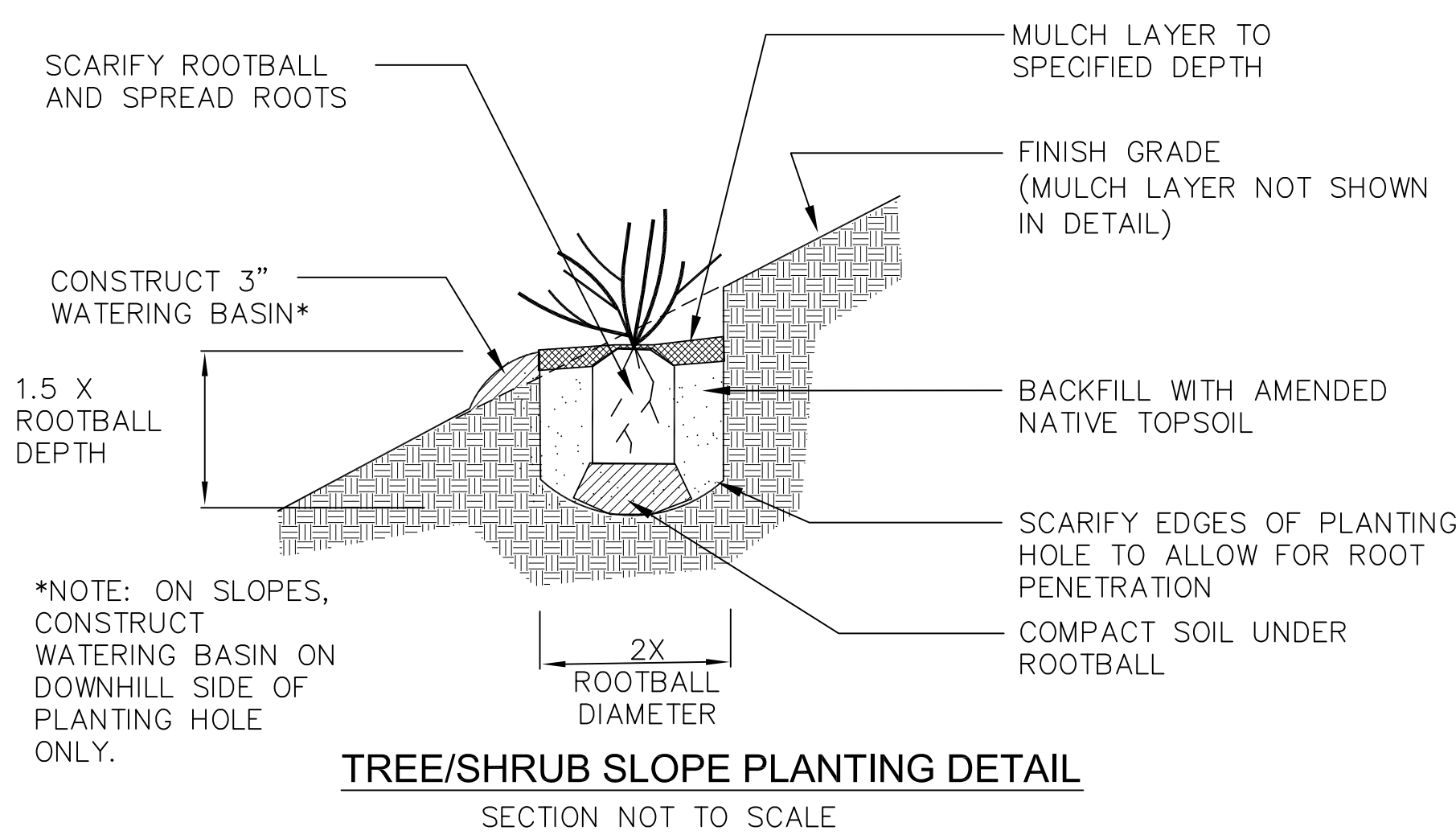
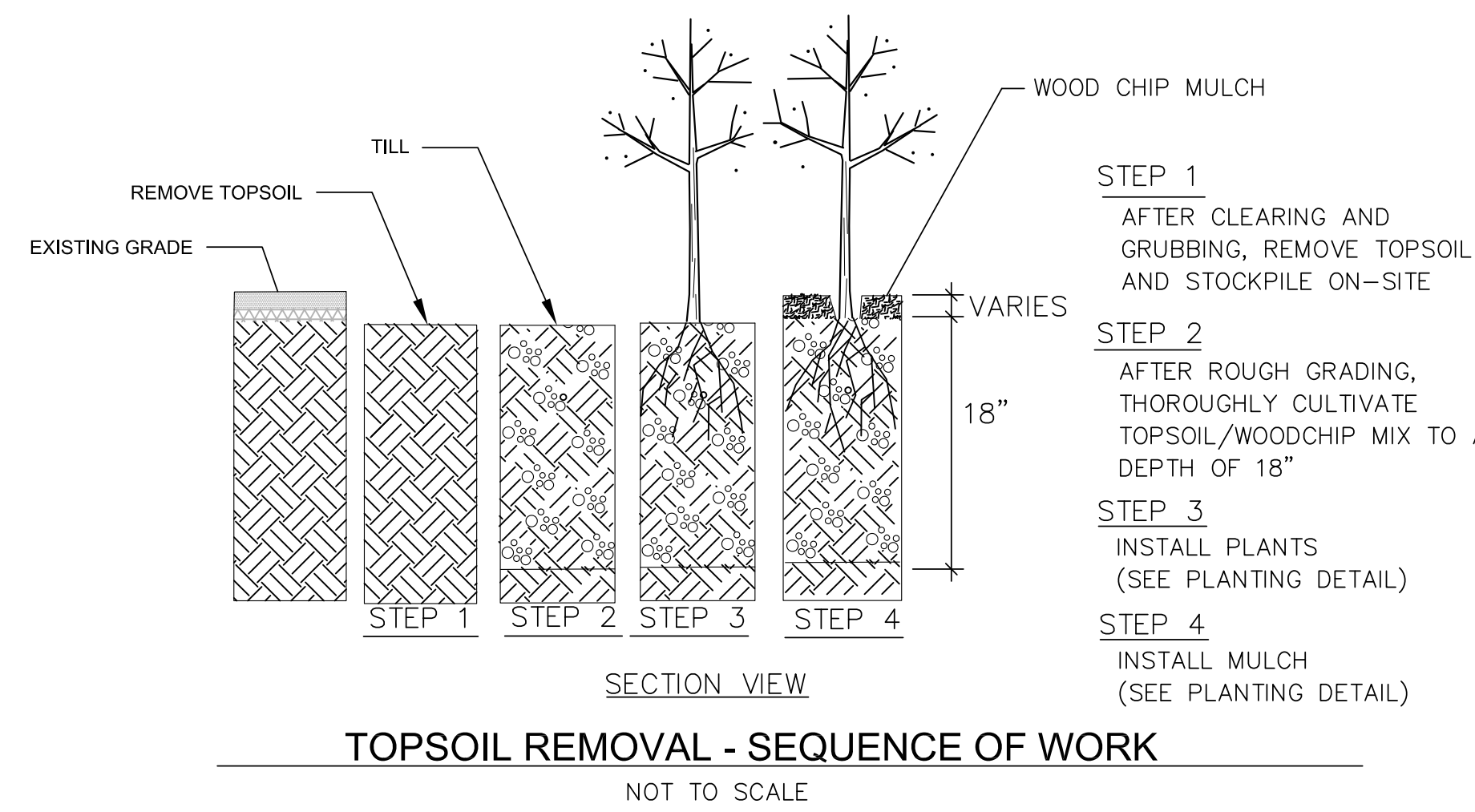
**DISCOVERY PARK**

**CAPEHART RESTORATION**

**PLANTING PLAN**

DESIGNED ME	DATE 10-13-10
DRAWN DP	SHEET 4 OF 5
CHECKED MW	
ORDINANCE NO. X	<b>L1.4</b>
CONTRACT NO. PDA2010-007	
SCALE 1"=50'	

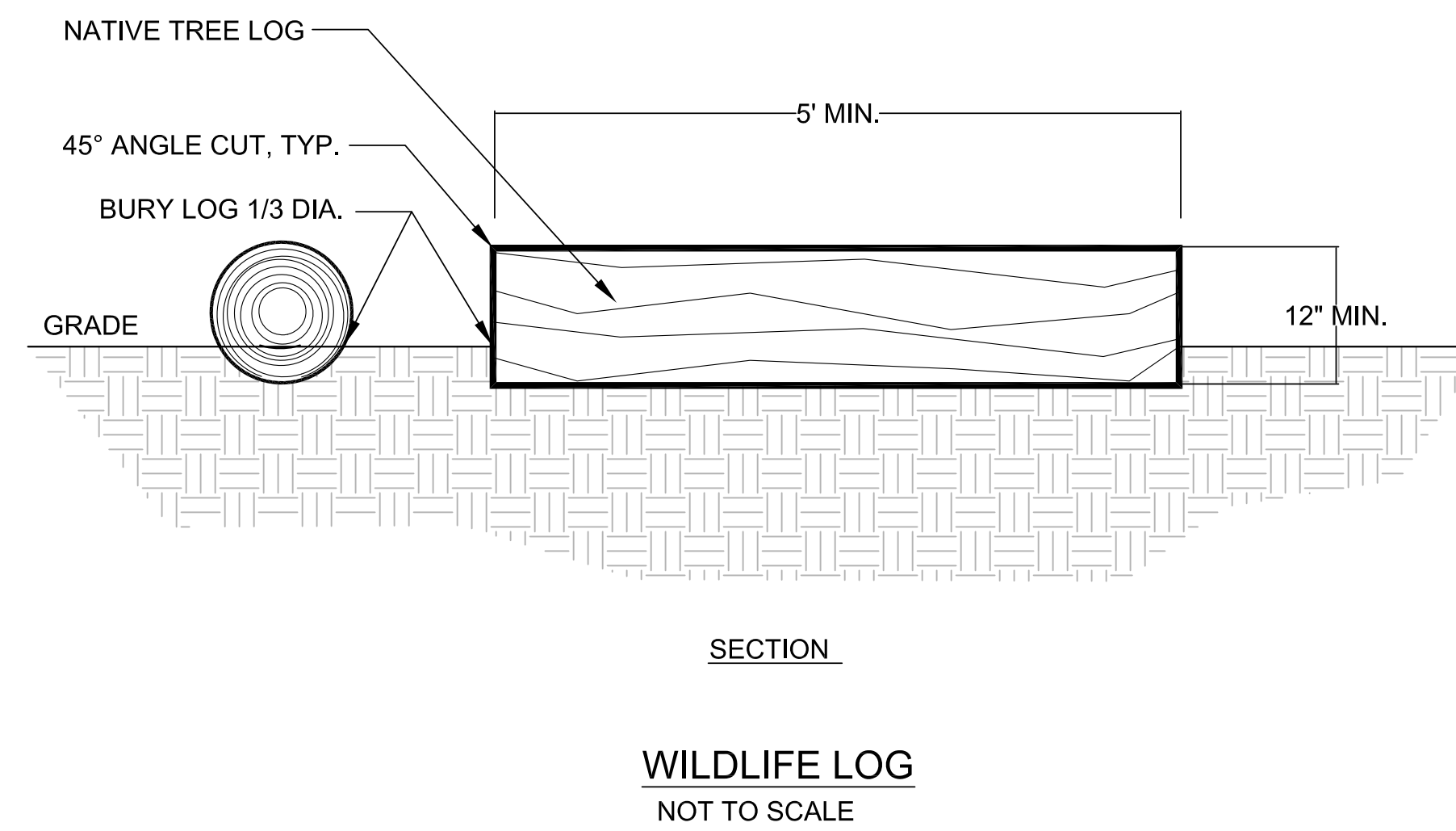
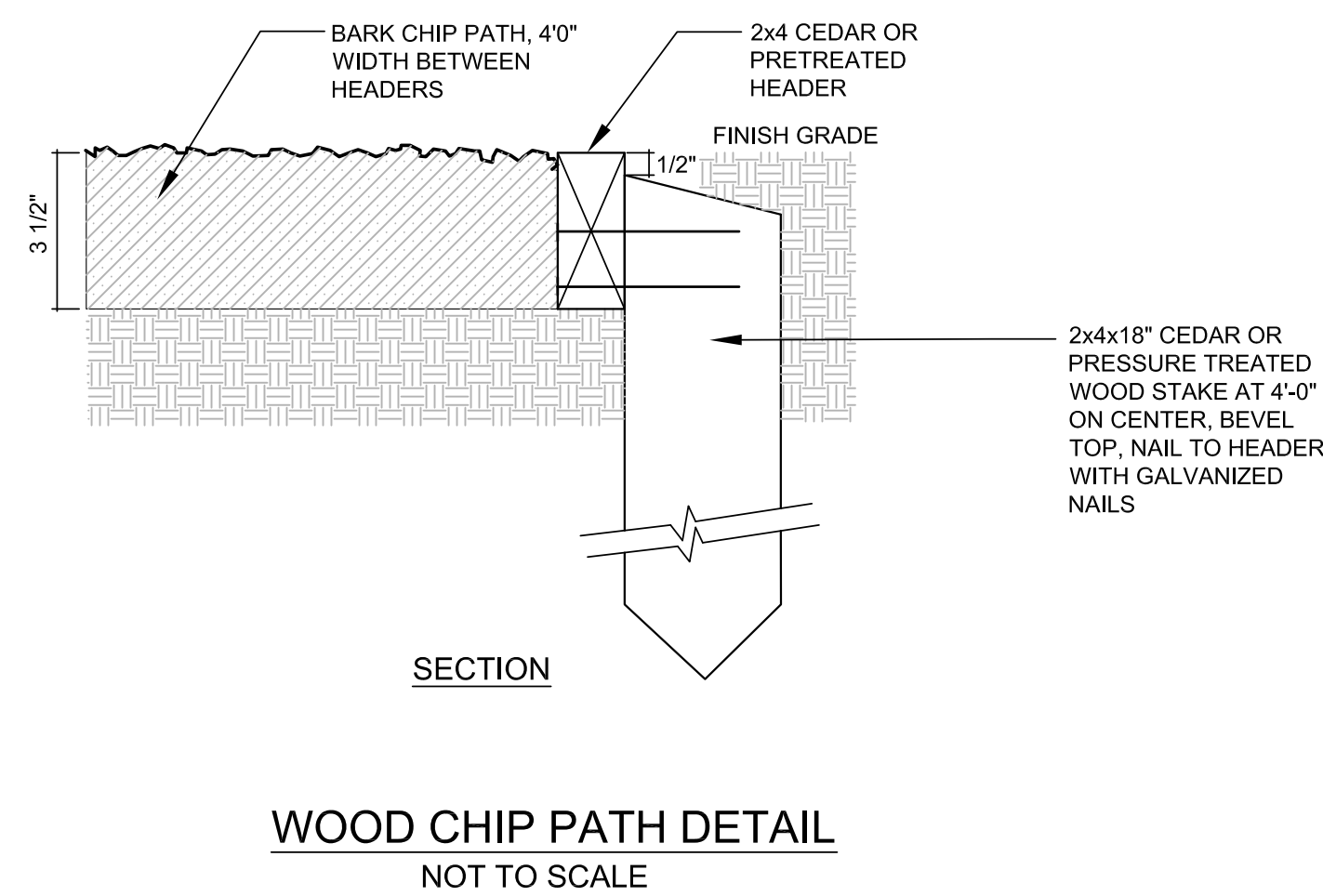
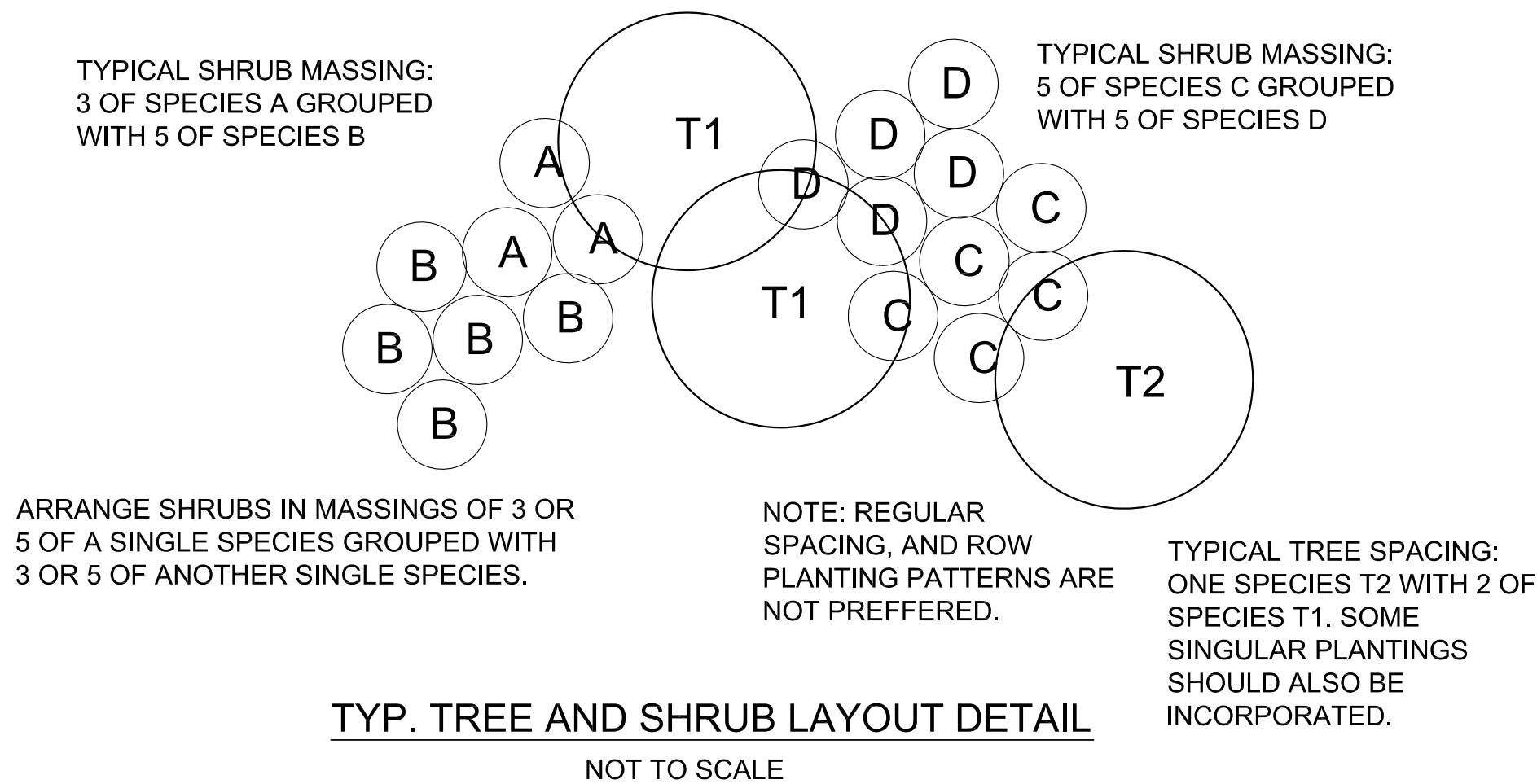
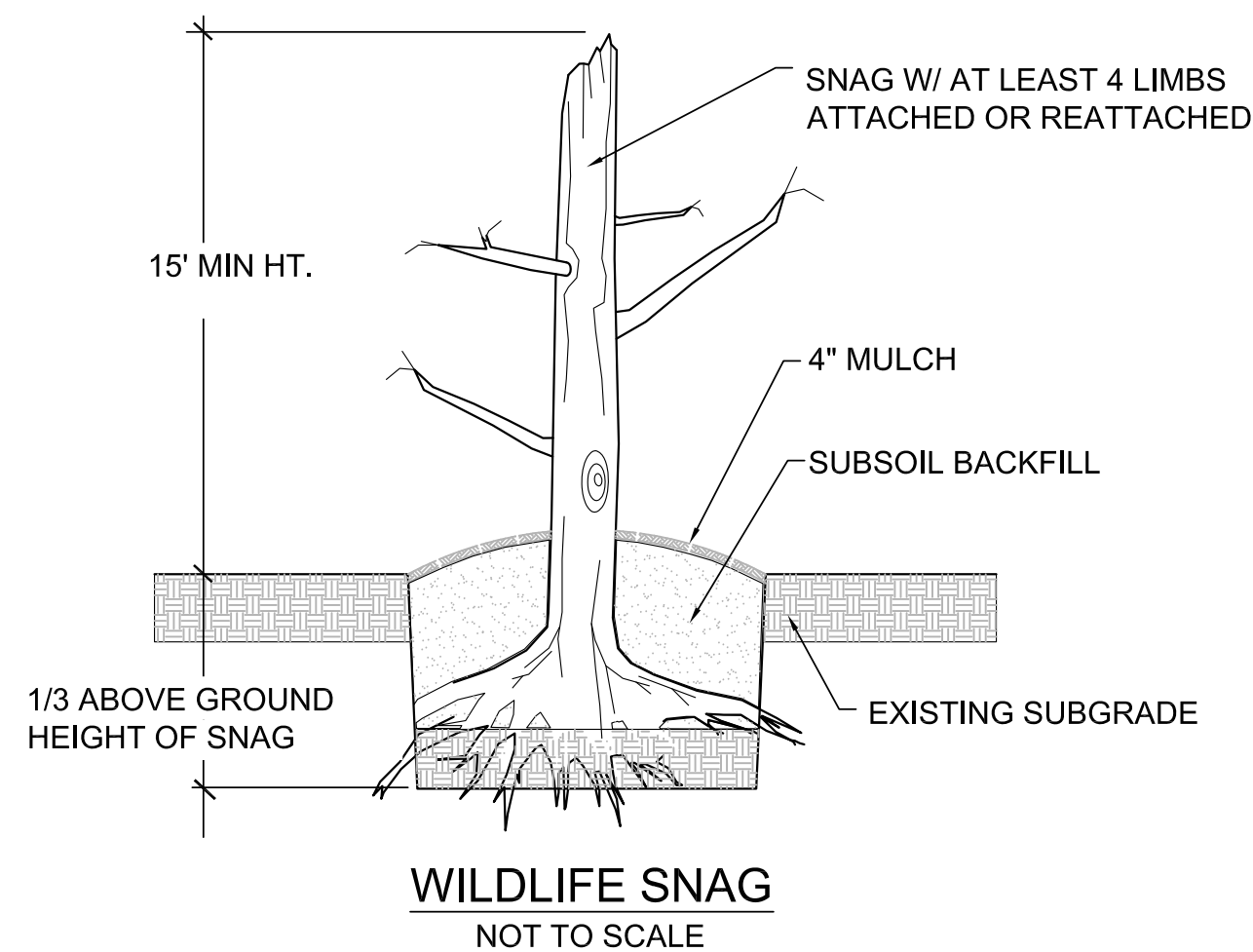
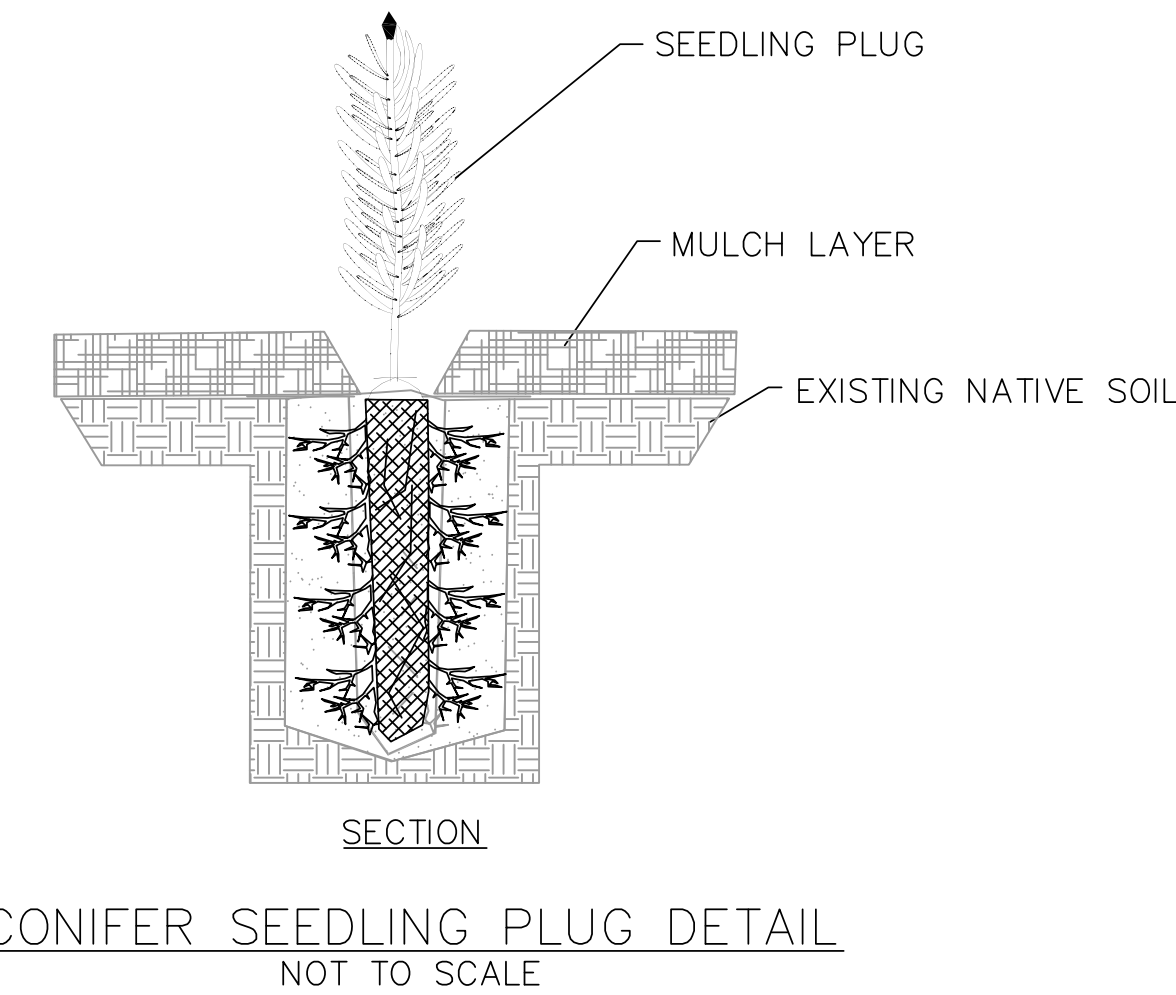
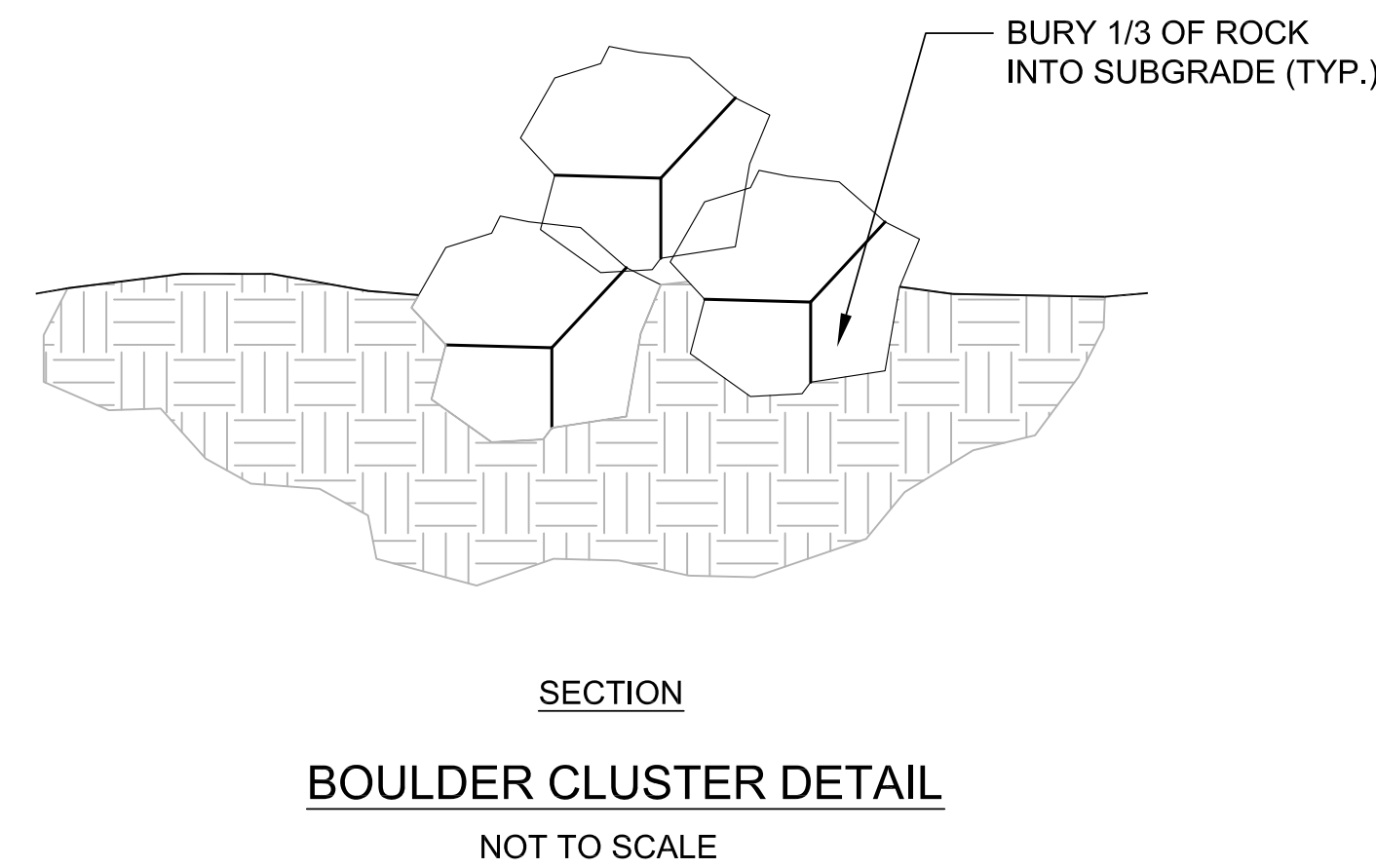
**55% SUBMITTAL**  
**NOT FOR CONSTRUCTION**



**PLANTING SCHEDULE**

SCIENTIFIC NAME	COMMON NAME	%
<b>CONIFEROUS-DOMINANT MIXED TREES</b>		
<i>Acer macrophyllum</i>	Big leaf maple	5
<i>Alnus rubra</i>	Red alder	5
<i>Arbutus menziesii</i>	Pacific madrone	5
<i>Cornus nuttallii</i>	Pacific dogwood	5
<i>Pinus contorta</i>	Shore pine	20
<i>Pseudotsuga menziesii</i>	Douglas fir	50
<i>Tsuga heterophylla</i>	Western hemlock	10
<b>TREE/SHRUB MIX</b>		
<i>Alnus rubra</i>	Red alder	5
<i>Amelanchier alnifolia</i>	Serviceberry	10
<i>Arbutus menziesii</i>	Pacific madrone	10
<i>Cornus nuttallii</i>	Pacific dogwood	10
<i>Gaultheria shallon</i>	Salal	5
<i>Holodiscus discolor</i>	Oceanspray	10
<i>Pinus contorta</i>	Shore pine	10
<i>Pseudotsuga menziesii</i>	Douglas fir	10
<i>Ribes sanguineum</i>	Red-flowering currant	10
<i>Rosa gymnocarpa</i>	Bald-hip rose	10
<i>Symphoricarpos albus</i>	Snowberry	10
<b>INFILTRATION AREAS</b>		
<i>Abies grandis</i>	Grand fir	25
<i>Pinus contorta</i>	Shore pine	25
<i>Pseudotsuga menziesii</i>	Douglas fir	25
<i>Tsuga heterophylla</i>	Western hemlock	25
<b>GRASSLAND</b>		
to be determined		

**SEED MIX**  
SEED ALL AREAS OF DISTURBED SOIL WITH THE FOLLOWING MIX:  
to be determined



**>>>>CAUTION<<<<**  
**CALL BEFORE YOU DIG!**  
NOT LESS THAN TWO OR MORE THAN TEN BUSINESS DAYS PRIOR TO COMMENCING EXCAVATION OR DEMOLITION, SECURE THE SERVICES OF A COMMERCIAL UNDERGROUND UTILITIES LOCATOR SERVICE TO IDENTIFY BELOW-GROUND IMPROVEMENTS THAT MAY NOT BE INDICATED ON THE DRAWINGS. FOR IRRIGATION SYSTEMS, CALL SEATTLE PARKS PLUMBING SHOP (206 684 7070)  
**>>800 424 5555<<**

**LEGEND**

3		
2		
1		
NO.	REVISION - AS BUILT	DATE

REVIEWED: \_\_\_\_\_ DATE \_\_\_\_\_  
PARK ENGINEER

All work done in accordance with the City of Seattle Standard Plans and Specifications in effect on the date shown above, and supplemented by Special Provisions.

**ESA Adolfson**  
5309 Shilshole Ave. NW  
Seattle, WA 98107  
P: (206) 789-9658  
F: (206) 789-9684



**DISCOVERY PARK**

**CAPEHART RESTORATION**

**DETAILS AND NOTES**

DESIGNED ME	DATE 10-13-10
DRAWN ME	SHEET 5 OF 5
CHECKED MW	
ORDINANCE NO. X	<b>L1.5</b>
CONTRACT NO. PDA2010-007	
SCALE NOT TO SCALE	

**55% SUBMITTAL**  
**NOT FOR CONSTRUCTION**

>>>>CAUTION<<<<  
**CALL BEFORE YOU DIG!**

NOT LESS THAN TWO OR MORE THAN TEN BUSINESS DAYS  
 PRIOR TO COMMENCING EXCAVATION OR DEMOLITION,  
 SECURE THE SERVICES OF A COMMERCIAL UNDERGROUND  
 UTILITIES LOCATOR SERVICE TO IDENTIFY BELOW-GROUND  
 IMPROVEMENTS THAT MAY NOT BE INDICATED ON THE  
 DRAWINGS. FOR IRRIGATION SYSTEMS, CALL SEATTLE  
 PARKS PLUMBING SHOP (206 684 7070)

>>800 424 5555<<

55% SUBMITTAL  
 NOT FOR CONSTRUCTION

REVISION	AS BUILT	DATE

PARK ENGINEER	DATE

All work done in accordance with the City of Seattle Standard  
 Plans and Specifications in effect on the date shown above, and  
 supplemented by Special Provisions.

**ESA Adolfson**  
 5309 Shilshole Ave. NW  
 Seattle, WA 98107  
 P: (206) 789-9658  
 F: (206) 789-9684



DISCOVERY PARK

CAPEHART RESTORATION

SECTIONS

DESIGNED	CMM	DATE	10-13-10
DRAWN	TLW	SHEET	6 OF 6
CHECKED	PDS		
ORDINANCE NO.	X		<b>L1.6</b>
CONTRACT NO.	PDA2010-007		
AS NOTED			

